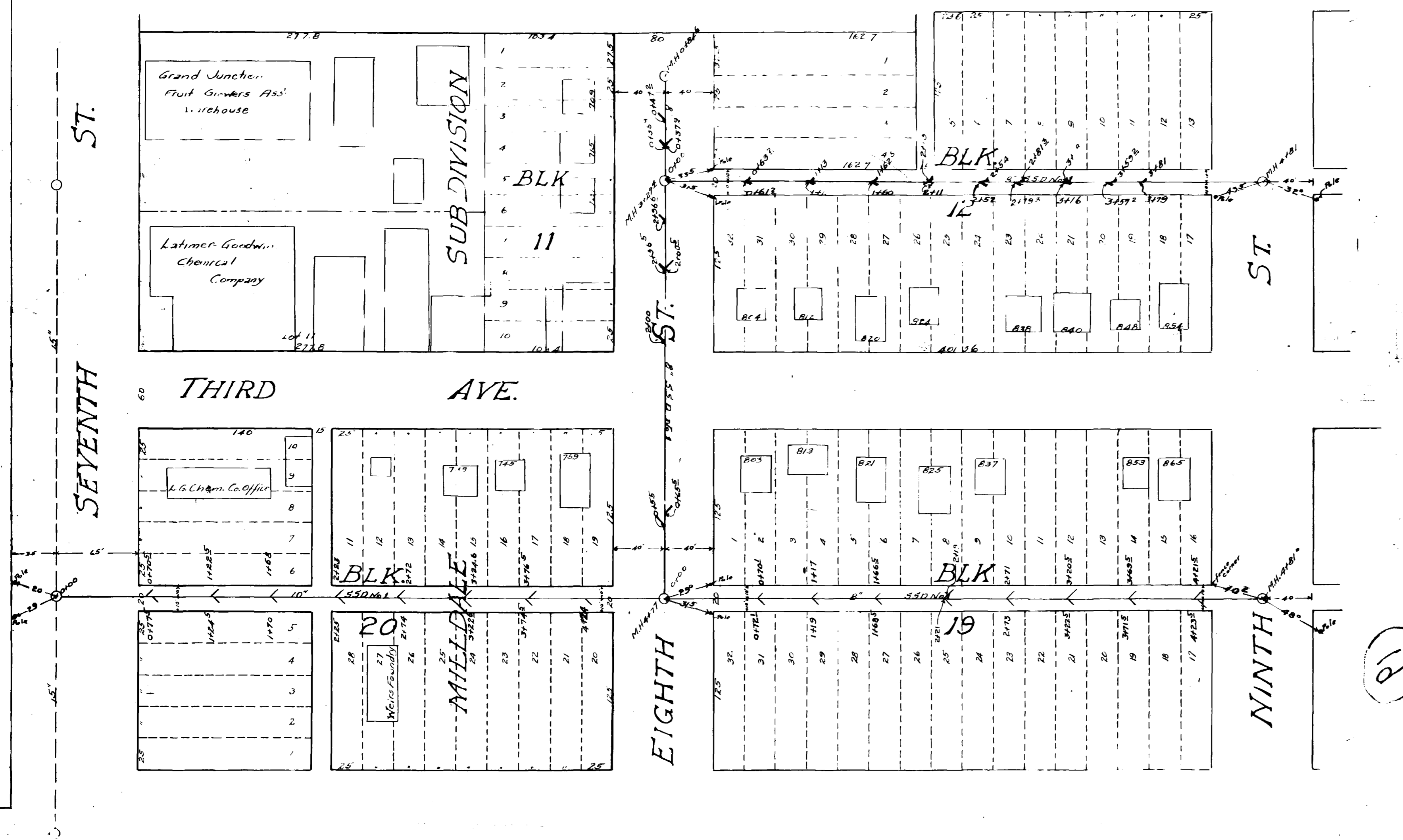


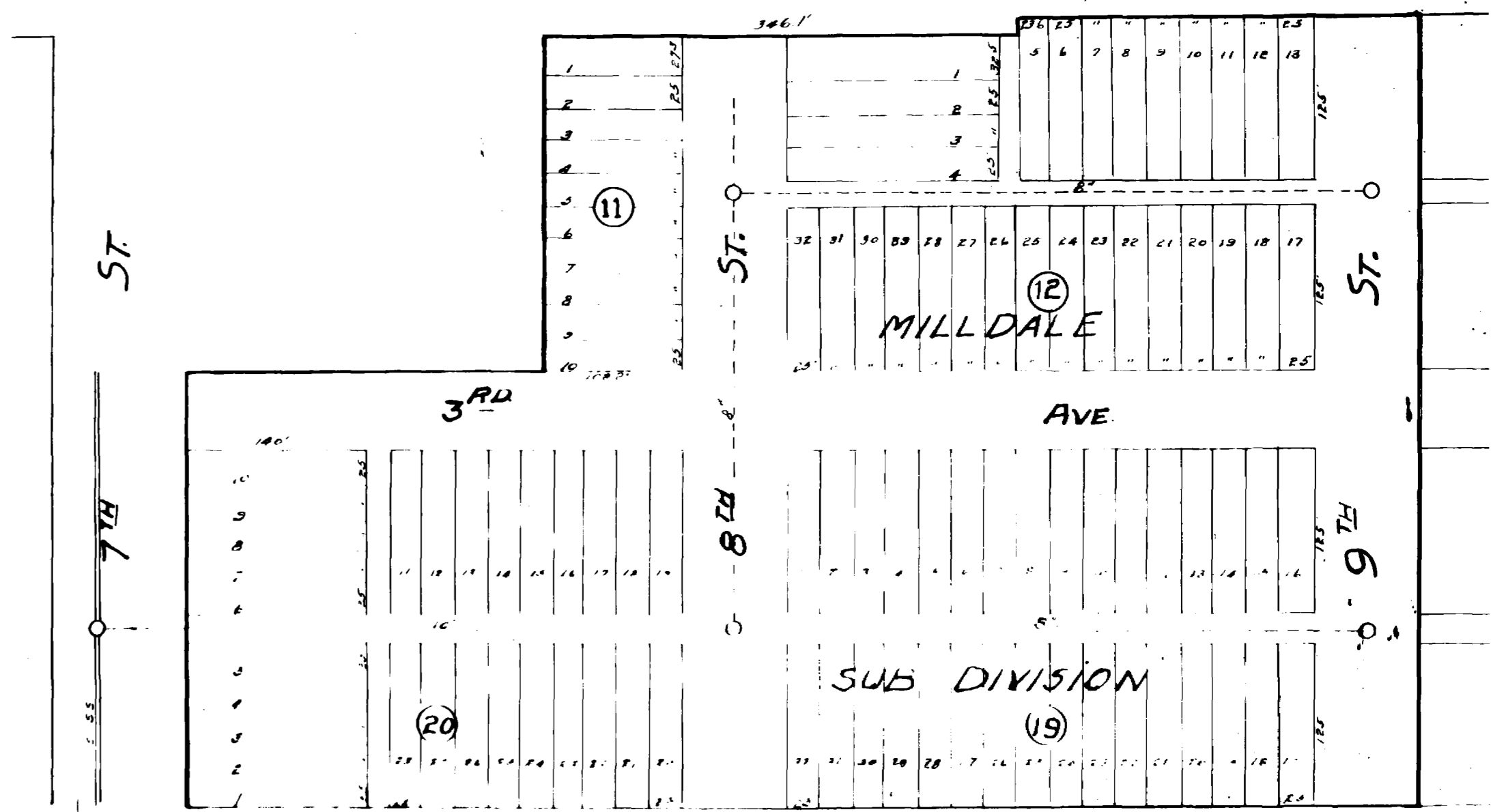
PLAT
SHOWING
Y-LOCATIONS
SPECIAL SANITARY SEWER DIST NO. 1

Scale 1" = 60'
Grand Junction Colo. August 1924
J. E. Thompson
City Engineer



SPECIAL SANITARY SEWER DISTRICT NO 1
SHOWING
Area to Be Improved, Boundary of District, Property
Assessed and Estimated Assessment on each Lot or Tract in
the District

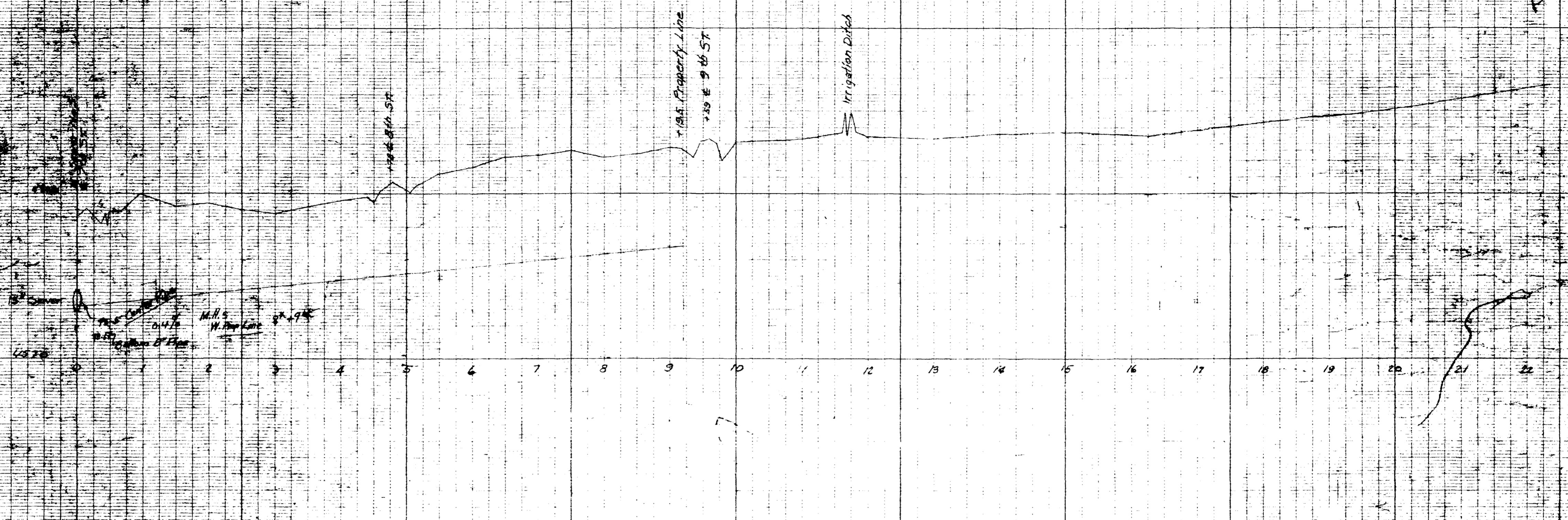
Rate Per Sq Ft \$0.0076
Cost Per Lot 125 X 85 \$3.75
GRAND JUNCTION COLO
APRIL 1924
Scale 1" = 100 feet
J. E. Thompson
City Engineer



02-325-02

55 Dist #1
Book 66
p 39-A

SPECIAL SANITARY SEWER DIST. 1



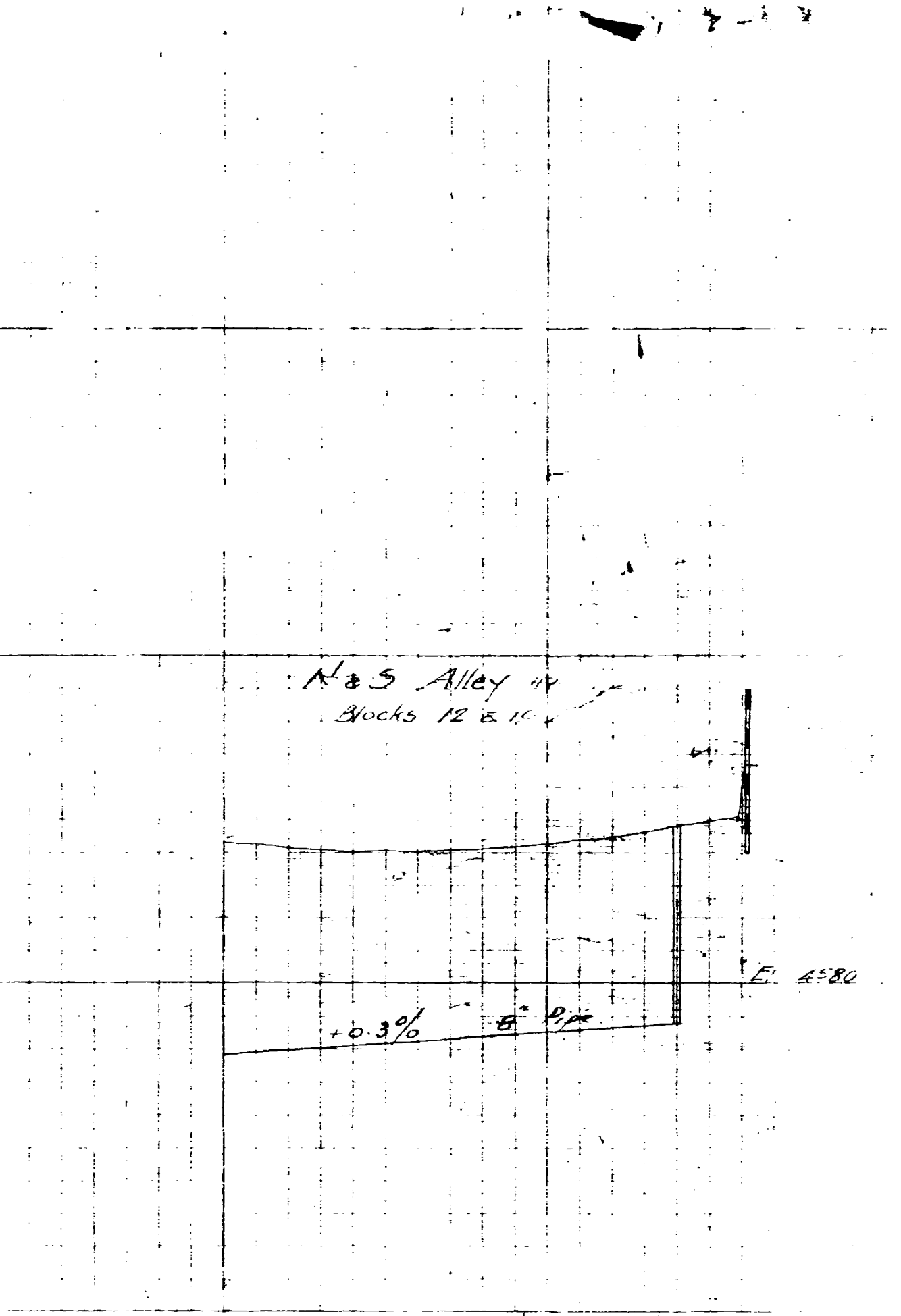
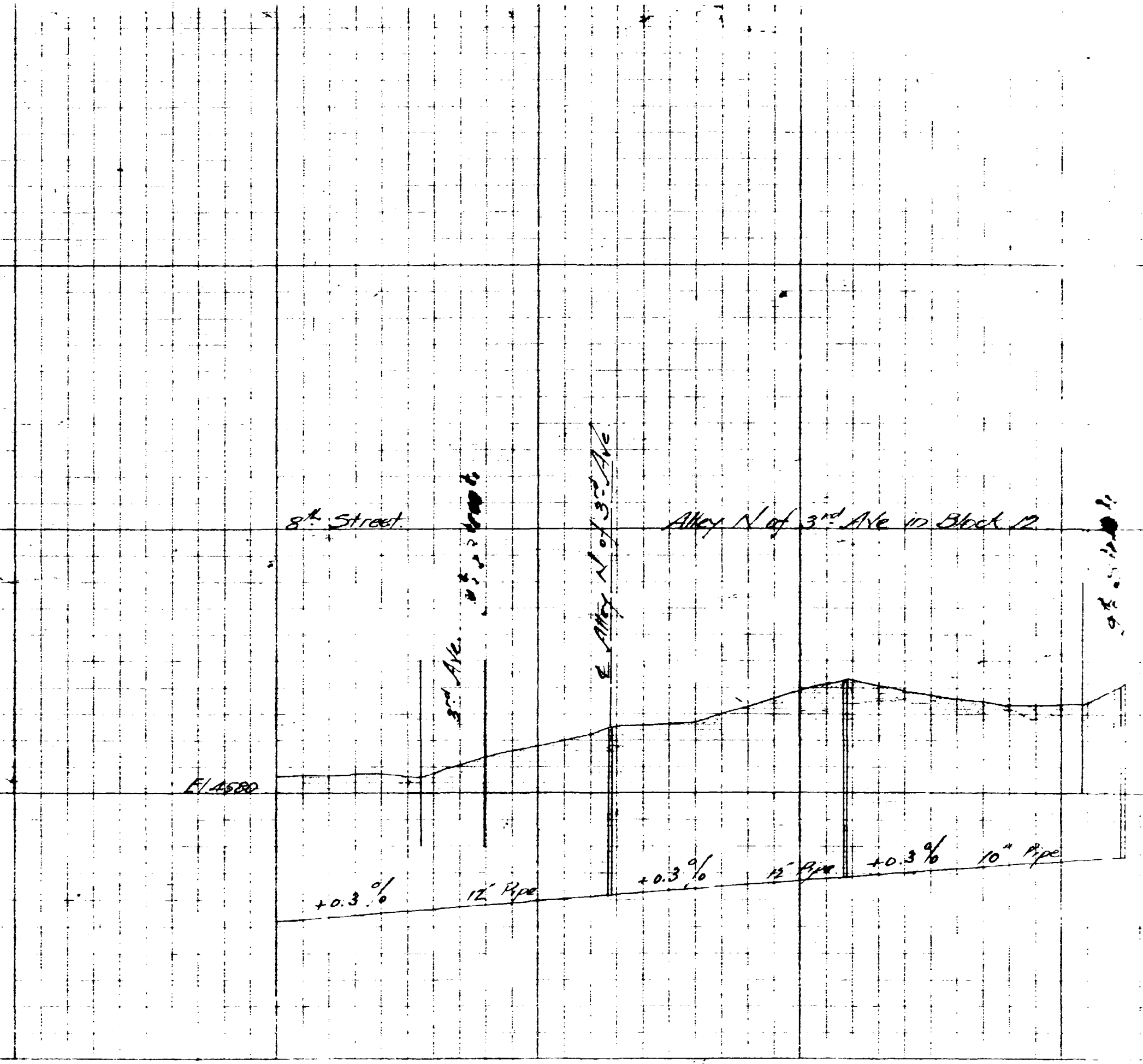
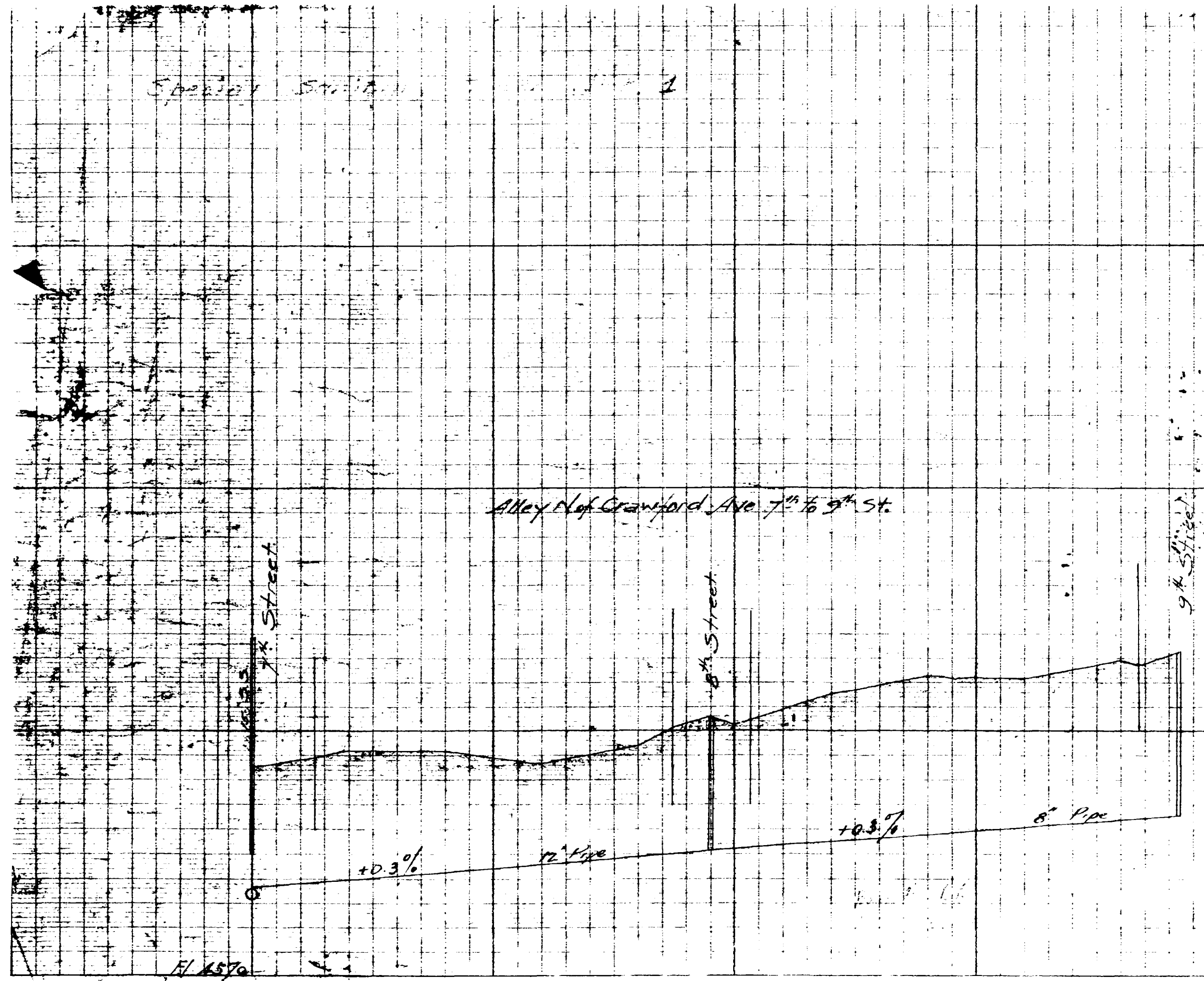
PROFILE OF ALLEY
BETWEEN 3RD AVE & CRAWFORD AVE
FROM 7TH STREET EAST

BIDS RECEIVED

SPECIAL SANITARY SEWER DISTRICT No. 1
Grand Junction, Colo. July 23, 1924

VITRIFIED

		Contractor John A. Butler Grand Junction		Contractor Winterburn & Lumsden Grand Junction		Contractor		Contractor		Contractor		Contractor		Engineer's Estimate			
Item No.	Quantity	Item	Unit Price	Total	Unit Price	Total	Unit Price	Total	Unit Price	Total	Unit Price	Total	Unit Price	Total	Unit Price	Total	
1	4851 ft	10" Sewer 6" cut	1.12	543.20	1.41	683.85									1.12	543.20	
2	12900 ft	8" Sewer 5" cut	1.02	1315.80	0.90	1161.00									1.02	1315.80	
3	5	Manholes	58.00	290.00	70.00	350.00									60.00	300.00	
Total				2149.00		2194.85										2159.00	
DATE of COMPLETION		Sept. 1, 1924		Sept. 10, 1924													



STANDARD PROFILE PLATE A 4 X 20
KEUFFEL & ESSER CO. NEW YORK

STANDARD PROFILE PLATE A 4 X 20
KEUFFEL & ESSER CO. NEW YORK