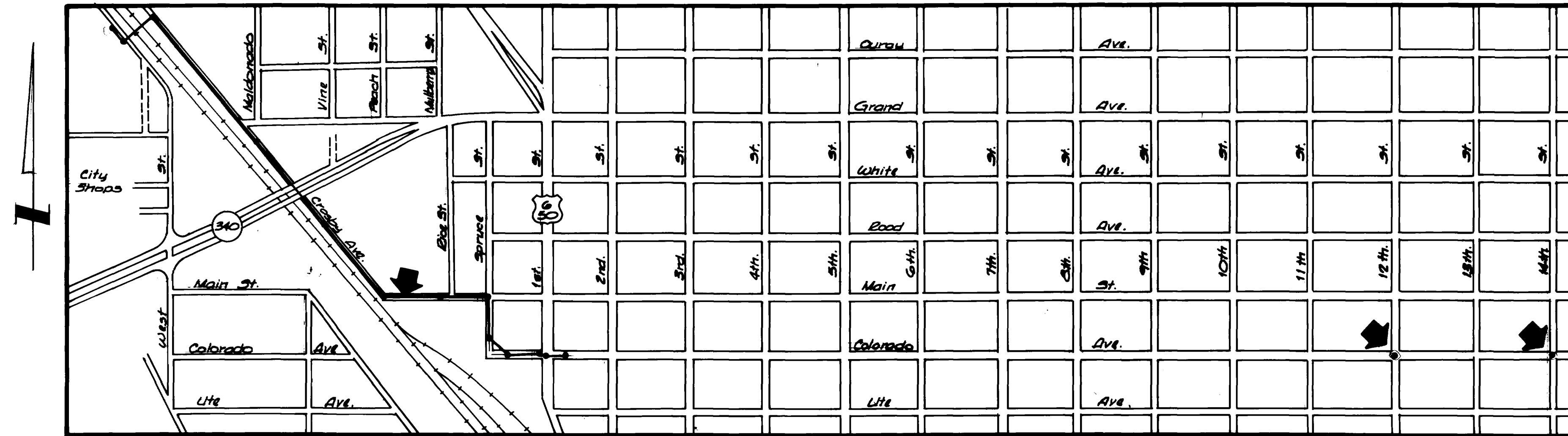
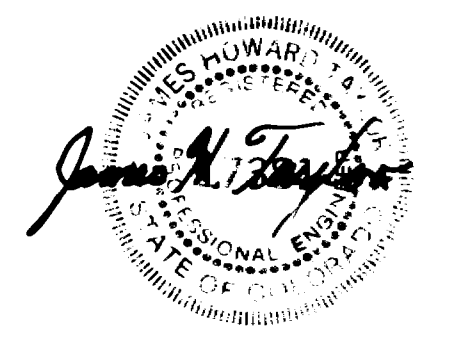


CROSBY AVENUE SEWER PROJECT RIVER ROAD TO COLORADO AVENUE



- 1. Cover Sheet
- 2. Drafting Standards & Abbreviations
- 3. Summary of Approximate Quantities
- 4-12. Plan & Profile Sheets
- 13. Soil Boring Logs
- 14-15. Detail Sheets
- 16. Standard Pavement Details (ST-1)
- 17. Standard Sanitary Sewer Details (SS-1)
- 18-21. Traffic Controls for Highway Construction CDOH S-614-50
- 22. Barricades, Drums, Concrete Barriers(temp.) & Vertical Panels CDOH S-614-51

*Contractor: Franklin Construction Co.
Pipe Used is P.V.C. & R.C.P.*



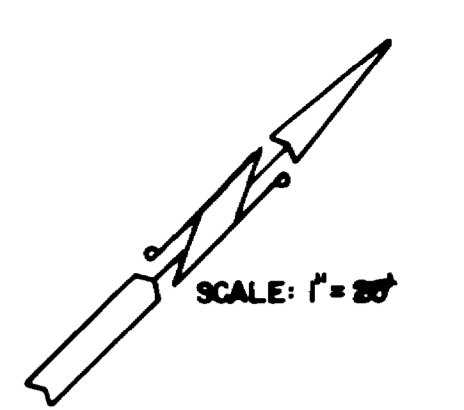
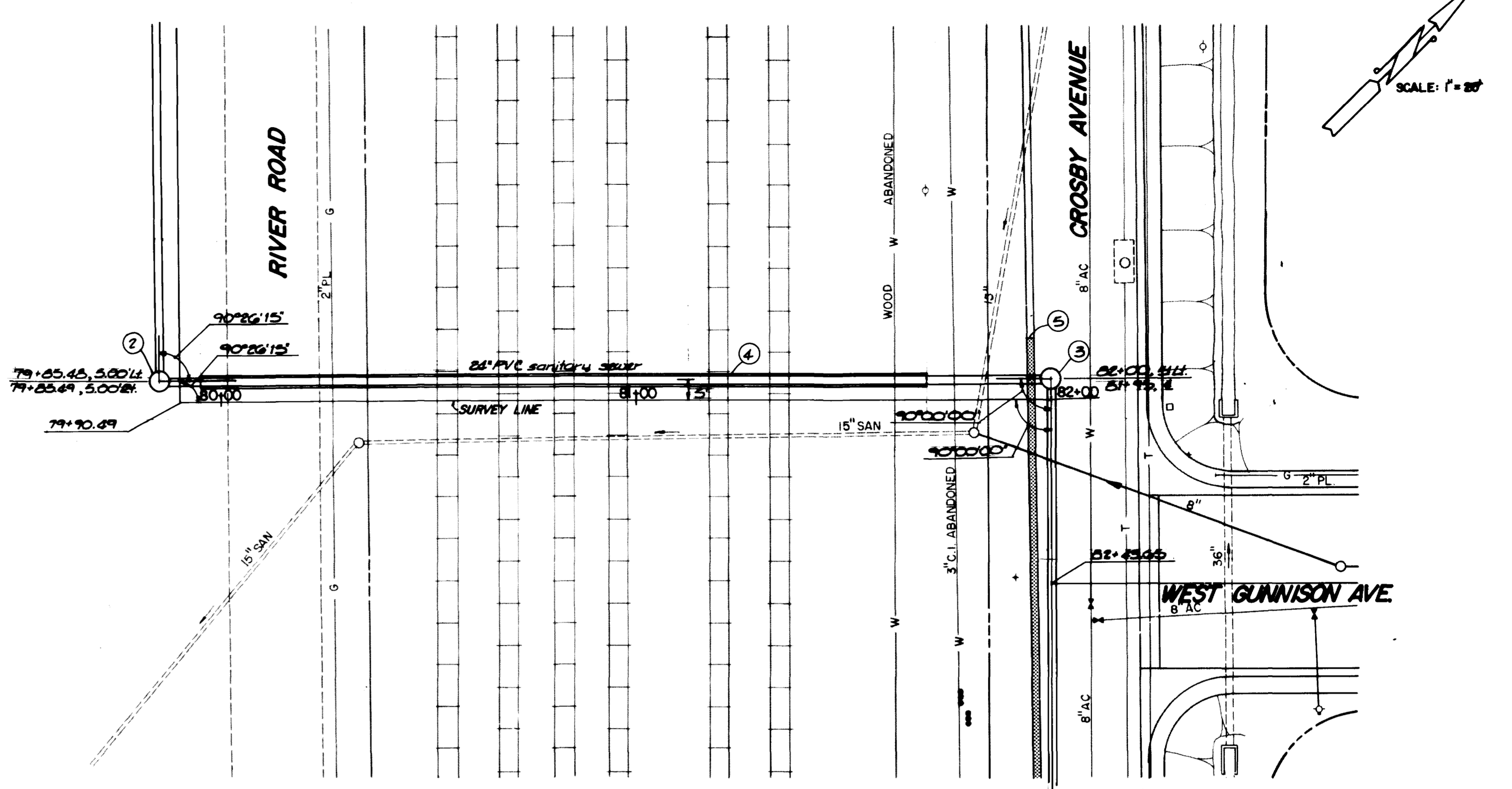
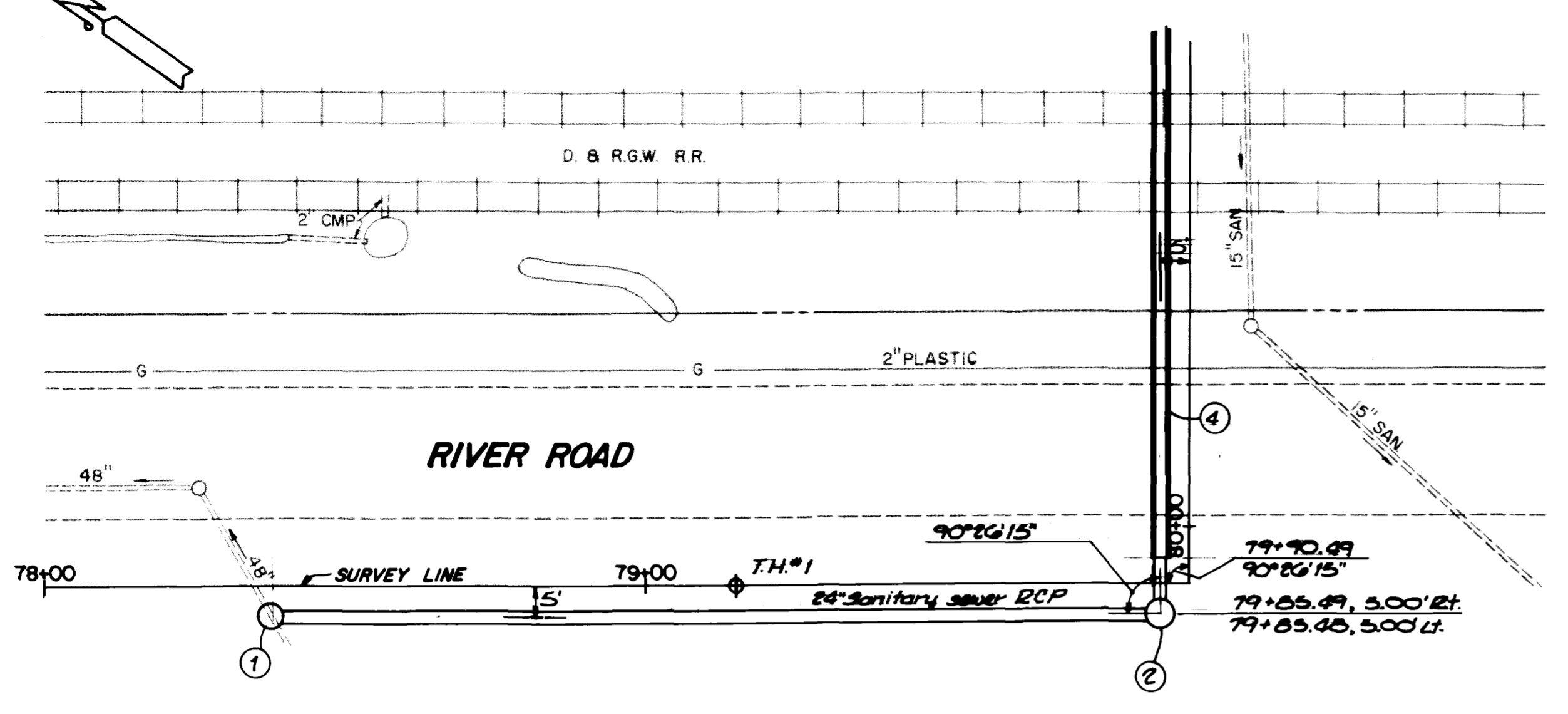
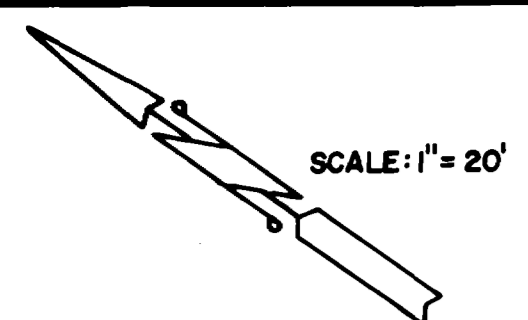
BID TABULATION SHEET

Crosby Avenue Sewer Project
Bid Opening January 22, 1987

ITEM NO.	REF. NO.	CONTRACT ITEM	UNITS	QUANTITY	Franklin Construction		U.S. Contractors		Johnson Const.		Parkerson Const.		Lyle States Const.		Grand Construction Group		Parker Excavating		Locke Associates		Engineer's Estimate	
					UNIT PRICE	TOTAL PRICE	UNIT PRICE	TOTAL PRICE	UNIT PRICE	TOTAL PRICE	UNIT PRICE	TOTAL PRICE	UNIT PRICE	TOTAL PRICE	UNIT PRICE	TOTAL PRICE	UNIT PRICE	TOTAL PRICE	UNIT PRICE	TOTAL PRICE	UNIT PRICE	TOTAL PRICE
1.		Cut and remove pavement (Includes concrete where encountered).	S.Y.	2875	1.00	2875.00	1.00	2875.00	3.00	8,625.00	1.80	5,175.00	2.00	5,750.00	2.50	7,187.50	1.00	2,875.00	10.00	28,750.00	2.50	7,187.50
2.		Sawcut, remove and replace 2' wide concrete curb & gutter (Includes 6" of Aggregate Base Course).	L.F.	432	8.50	3672.00	10.00	4320.00	10.22	4,415.04	16.00	6,912.00	11.00	4,752.00	12.00	5,184.00	8.40	3,628.80	15.00	6,480.00	15.00	6,480.00
3.		Sawcut, remove and replace 3' wide concrete gutter pan (Includes 6" of Aggregate Base Course).	L.F.	76	12.00	912.00	13.00	988.00	13.16	1,000.16	22.00	1,672.00	15.20	1,155.20	16.00	1,216.00	9.00	684.00	20.00	1,520.00	25.00	1,900.00
4.		Granular Subgrade Stabilization Material under sewerline where authorized (Includes over excavation).	Tons	2000	3.00	6000.00	.10	200.00	6.90	13,000.00	5.00	10,000.00	5.75	11,500.00	7.00	14,000.00	8.50	17,000.00	12.00	24,000.00	9.50	19,000.00
5.		Aggregate Base Course Class t, 9" Thickness (Haul, Water & Compact).	S.Y.	4725	3.00	14175.00	4.00	18900.00	4.20	19,845.00	4.50	21,262.50	4.30	20,317.50	3.75	17,718.75	4.00	18,900.00	14.00	66,150.00	5.50	25,987.50
6.		Hot Bituminous Pavement, 3" Thickness (Grade E) Haul, Asphalt & Compact).	S.Y.	3075	7.00	21525.00	10.00	30750.00	8.36	25,707.00	7.50	23,062.50	8.00	24,600.00	9.50	29,212.50	8.75	26,906.25	12.00	36,900.00	8.00	24,600.00
7.		48" Dia. Manhole at Station 78+38, 5' Rt. (Includes excavation and backfill)	Lump Sum	Lump Sum	1700	1700.00	2000	2000.00	4155	4,155.00	3500	3,500.00	2800	2,800.00	1700	1,700.00	1486	1,486.00	4000	4,000.00	2000	2,000.00
8.		48" Dia. Manhole (Includes excavation and backfill).	Each	6	940	5640.00	1300	7800.00	1752	10,512.00	1400	8,400.00	1200	7,200.00	1500	9,000.00	968.00	5,808.00	1200	7,200.00	1500	9,000.00
9.		60" Dia. Manhole (Includes excavation and backfill).	Each	8	1700	13600.00	1900	15200.00	2658	21,264.00	2100	16,800.00	2000	16,000.00	2000	16,000.00	1455	11,640.00	2000	16,000.00	2200	17,600.00
10.		Furnish and Install 36" Dia. Steel Casing Pipe (0.625" wall thickness).	L.F.	295	200.00	59000.00	270.00	79650.00	152.54	44,999.30	180.00	53,100.00	240.00	70,800.00	225.00	66,375.00	191.00	56,345.00	300.00	88,500.00	260.00	76,700.00
11.		Fill 36" Steel Casing Pipe with sand or pea gravel	Lump Sum	Lump Sum	700.00	700.00	4425	4425.00	5000	5,000.00	6000	6,000.00	5120	5,120.00	1000	1,000.00	2950	2,950.00	8850	8,850.00	3750	3,750.00
12.		24" PVC Sanitary Sewer Pipe through steel casing pipe	L.F.	295	20.00	5900.00	20.00	5900.00	36.40	10,738.00	38.00	11,210.00	33.00	9,735.00	23.00	6,785.00	50.00	14,750.00	30.00	8,850.00	35.75	10,546.25
13.		24" PVC Sanitary Sewer Pipe ASTM F679 (Includes excavation and backfill).	L.F.	1535	53.00	81355.00	56.00	85960.00	51.66	79,298.10	44.00	67,540.00	82.30	126,330.50	56.00	85,960.00	67.50	103,612.50	50.00	76,750.00	67.50	103,612.50
14.		24" Sanitary Sewer Pipe (Includes excavation and backfill)	L.F.	2145	50.00	107250.00	52.00	111540.00	54.10	116,044.50	64.00	137,280.00	43.57	93,457.65	56.00	120,120.00	65.75	141,033.75	44.00	94,380.00	64.00	137,280.00
15.		Remove and Replace 12" Corrugated Metal Pipe (Includes excavation and backfill)	L.F.	15	25.00	375.00	40.00	600.00	13.50	202.50	26.00	390.00	30.00	450.00	26.75	401.25	21.00	315.00	30.00	450.00	20.00	300.00
16.		Remove 15" pipe as necessary, plug end of pipe that remains (Note 8, Sheet 12)	Lump Sum	Lump Sum	125.00	125.00	200.00	200.00	125.00	125.00	200.00	200.00	500.00	500.00	600.00	600.00	250.00	250.00	2000	2000.00	500.00	500.00
17.		Plug end of 15" pipe in manhole (Note 9, Sheet 12)	Lump Sum	Lump Sum	60.00	60.00	200.00	200.00	125.00	125.00	200.00	200.00	250.00	250.00	200.00	200.00	200.00	200.00	1000	1000.00	400.00	400.00
18.		Remove 10" pipe, install 15" PVC sewer pipe between manholes 5, Sheet 12)	Lump Sum	Lump Sum	694.00	694.00	1200	1200.00	500.00	500.00	800.00	800.00	800.00	800.00	1500	1,500.00	2990	2,990.00	3500	3500.00	500.00	500.00
19.		Knock hole in manhole to install 24" sanitary sewer pipe (Note 10, Sheet 12)	Lump Sum	Lump Sum	90.00	90.00	200.00	200.00	300.00	300.00	400.00	400.00	400.00	400.00	500.00	500.00	268.00	268.00	2000	2000.00	500.00	500.00
20.		Pothole Utility Lines to verify elevation.	Each	2	60.00	120.00	400.00	800.00	200.00	400.00	100.00	200.00	300.00	600.00	100.00	200.00	200.00	400.00	500.00	1000.00	250.00	500.00
21.		Informational Newsletters (Approximately 30 required per week).	Weeks	16	55.00	880.00	100.00	1600.00	30.00	480.00	75.00	1,200.00	70.00	1,120.00	25.00	400.00	675.00	10,800.00	60.00	960.00	115.00	1,840.00
22.		Mobilization	Lump Sum	Lump Sum	2200	2200.00	10000	10000.00	20000	20,000.00	10000	10,000.00	5000	5,000.00	31000	31,000.00	13300	13,300.00	20000	20,000.00	5000	5,000.00
23.		Traffic Control Advance Warning Signs, Barricades, Flagmen	Lump Sum	Lump Sum	1500	1500.00	5000	5000.00	6800	6,800.00	5000	5,000.00	5200	5,200.00	5000	5,000.00	2500	2,500.00	10000	10,000.00	5000	5,000.00
		12th & Colorado																				
24.		Plug and unplug 12" pipes, remove 12" pipe from manhole.	Lump Sum	Lump Sum	300.00	300.00	300.00	300.00	400.00	400.00	1500	1,500.00	600.00	600.00	500.00	500.00	325.00	325.00	3000	3,000.00	700.00	700.00
		14th & Colorado																				
25.		Remove plug from 24" pipe, extend 24" pipe 3 L.F., knock hole in existing manhole, reconstruct manhole, reconstruct manhole invert, construct dam across pipe opening (Includes excavation and backfill).	Lump Sum	Lump Sum	700.00	700.00	3100	3100.00	1350	1,350.00	4500	4,500.00	2610	2,610.00	2500	2,500.00	2815	2,815.00	4000	4,000.00	4000	4,000.00
26.		Cut and remove asphalt pavement	S.Y.	24	2.00	48.00	6.00	144.00	5.00	120.00	4.00	96.00	192.00	4,608.00	4.00	96.00	8.00	192.00	15.00	360.00	8.00	192.00
27.		Hot Bituminous Pavement, 3" Thickness (Grade E) (Haul, Asphalt & Compact)	S.Y.	24	10.00	240.00	15.00	360.00	14.00	336.00	20.00	480.00	20.00	480.00	15.00	360.00	15.00	360.00	20.00	480.00	12.50	300.00
28.		Aggregate Base Course Class 6 9" Thickness (Haul Water, & Compact).	S.Y.	24	8.00	192.00	7.00	168.00	5.25	126.00	10.00	240.00	6.00	144.00	6.00	144.00	8.00	192.00	25.00	600.00	7.10	170.40
TOTAL BID						\$331,828.00		\$394,380.00		\$395,867.60		\$397,120.00		\$422,279.85		\$424,860.00		\$442,526.30		\$517,680.00		\$465,546.15

SUMMARY OF APPROXIMATE QUANTITIES

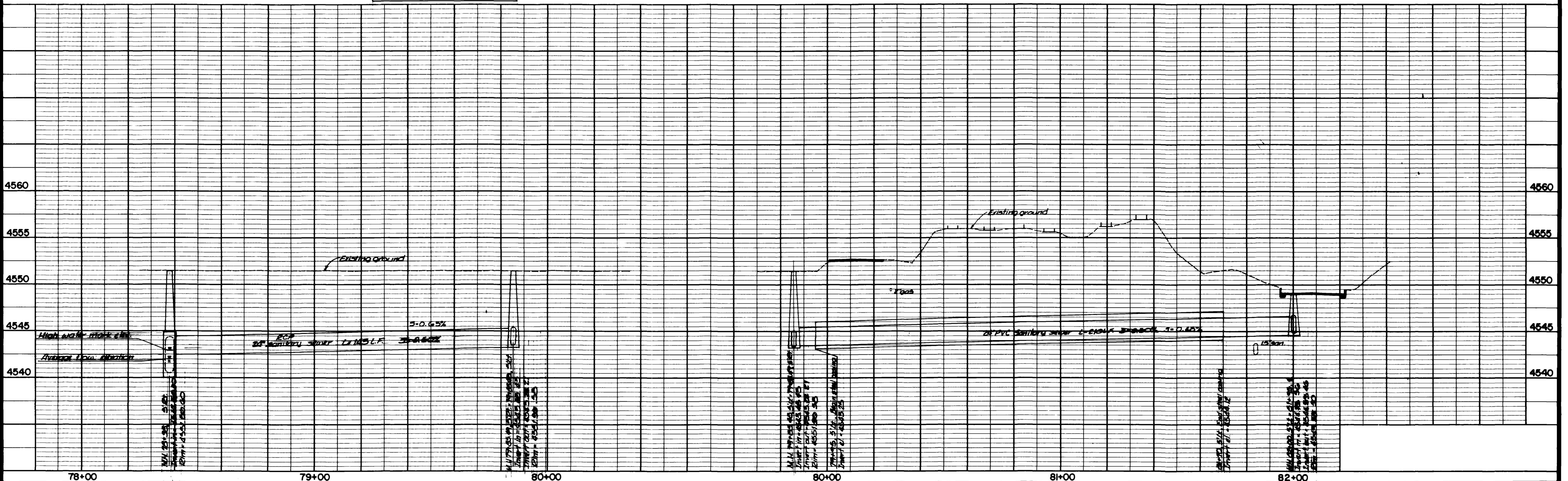
Item No.	Ref. No.	Contract Item	Unit	Quantity														Totals
1		Cut and remove pavement (Includes concrete where encountered).	S.Y.	2875														
2		Sawcut, remove and replace 2' wide concrete curb & gutter (Includes 6" of Aggregate Base Course).	L.F.	432														
3		Sawcut, remove and replace 3' wide concrete gutter pan (Includes 6" of Aggregate Base Course)	L.F.	76														
4		Granular Subgrade Stabilization Material under sewerline where authorized (Includes over excavation)	Tons	2000														
5		Aggregate Base Course Class 6, 9" Thickness (Haul, Water & Compact)	S.Y.	4725														
6		Hot Bituminous Pavement, 3" Thickness (Grade E)(Haul, Asphalt & Compact)	S.Y.	3075														
7		48" Dia. Manhole at station 78+38, 5' Rt. (Includes excavation and backfill)	Lump Sum	Lump Sum														
8		48" Dia. Manhole (Includes excavation and backfill)	ea.	6														
9		60" Dia. Manhole (Includes excavation and backfill)	ea.	8														
10		Furnish and install 36" dia. steel casing pipe (0.625" wall thickness)	L.F.	295														
11		Fill 36" steel casing pipe with sand or pea gravel	Lump Sum	Lump Sum														
12		24" PVC Sanitary Sewer Pipe through steel casing pipe	L.F.	295														
13		24" PVC Sanitary Sewer Pipe ASTM F679 (Includes excavation and backfill).	L.F.	1535														
14		24" Sanitary sewer pipe (Includes excavation and backfill)	L.F.	2145														
15		Remove and replace 12" Corrugated Metal Pipe (Includes excavation and backfill)	L.F.	15														
16		Remove 15" pipe as necessary, plug end of pipe that remains (Note 8, Sheet 12)	Lump Sum	Lump Sum														
17		Plug end of 15" pipe in manhole (Note 9, sheet 12)	Lump Sum	Lump Sum														
18		Remove 10" pipe, install 15" PVC sewer pipe between manholes (Note 5, sheet 12)	Lump Sum	Lump Sum														
19		Knock hole in manhole to install 24" sanitary sewer pipe (note 10, sheet 12)	Lump Sum	Lump Sum														
20		Pothole Utility lines to verify evaluation	ea.	2														
21		Informational newsletters (approximately 30 required per week)	weeks	16														
22		Mobilization	Lump Sum	Lump Sum														
23		Traffic Control Advance warning signs, barricades, flagmen)	Lump Sum	Lump Sum														
24		12th & Colorado Ave. Plug and Unplug 12" pipes, remove 12" pipe from manhole	Lump Sum	Lump Sum														
25		14th & Colorado Ave. Remove plug from 24" pipe, extend 24" pipe 3 L.F., Knock hole in existing manhole, reconstruct manhole invert, construct dam across pipe opening (Includes excavation and backfill).	Lump Sum	Lump Sum														
26		Cut and remove asphalt pavement.	S.Y.	24														
27		Hot Bituminous Pavement, 3" Thickness (Grade E)(Haul, Asphalt & Compact)	S.Y.	24														
28		Aggregate base course class 6 9" thickness (Haul, water & compact)	S.Y.	24														



Construction Notes:

- ① 78+35, 5' Lt. 48" diameter manhole. See sheet 14 for details.
- ② 79+05.49, 5' Lt. } 60" diameter manhole
- ③ 82+00, 5' Lt. }
- ④ 79+95, 5' Lt. to 81+70, 5' Lt. 36" diameter steel casing. Jack or bore into place. Length = 175 L.F. Slope = 0.50%. Wall thickness = 0.625 inches.
- ⑤ Saw cut concrete curb & gutter 15' Lt. of survey line. Shaded area indicates removal & replacement of 2" vertical curb & gutter.

Bench Mark
 ④ Property corner NE corner City Shop property on River Road, West side. Elev. = 4532.675



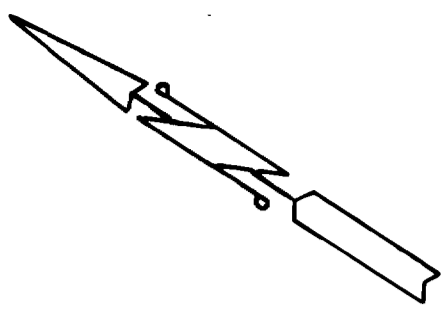
REVISION Δ Profile, change to RCP	DATE 7-28-87	DRAWN BY Lesley	DATE 1-87
REVISION Δ		CHECKED BY JHT	DATE 1-87
REVISION Δ		APPROVED BY JHT	DATE 1-87
REVISION Δ		FIELD BOOK NO. LL-11	PAGE 375-411

DEPARTMENT OF PUBLIC WORKS AND UTILITIES
ENGINEERING DIVISION
CITY OF GRAND JUNCTION, COLORADO

CROSBY AVENUE SEWER PROJECT
RIVER ROAD TO COLORADO AVENUE
PLAN & PROFILE

SHEET NO. 4
OF 22
FILE NO.

SCALE: 1" = 20'

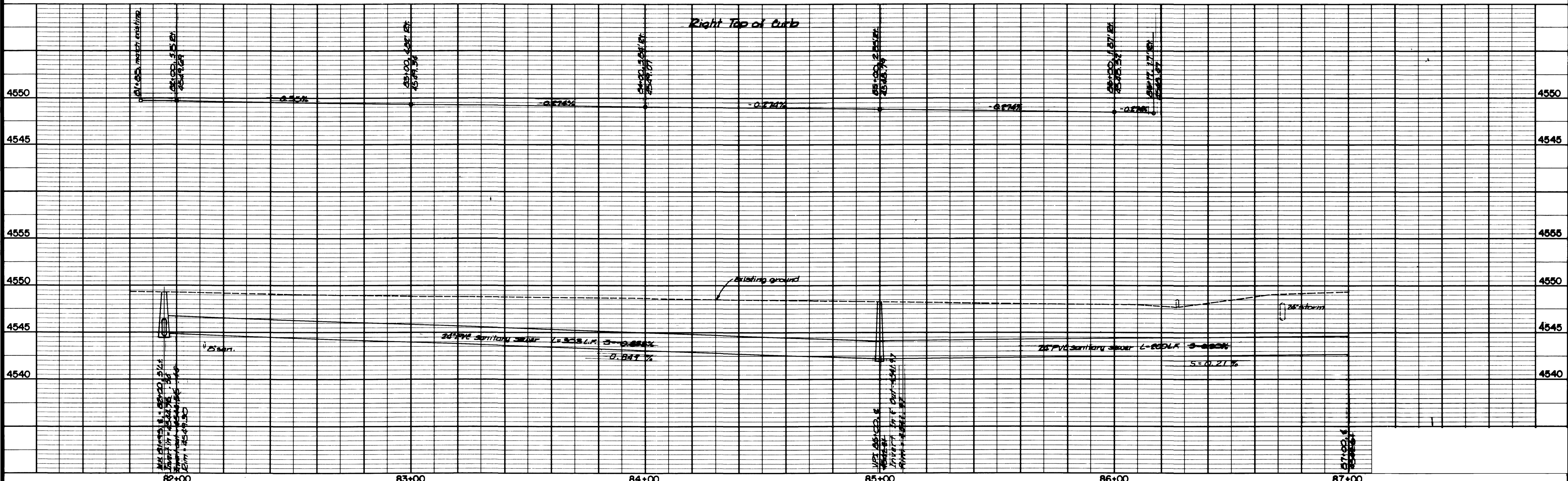
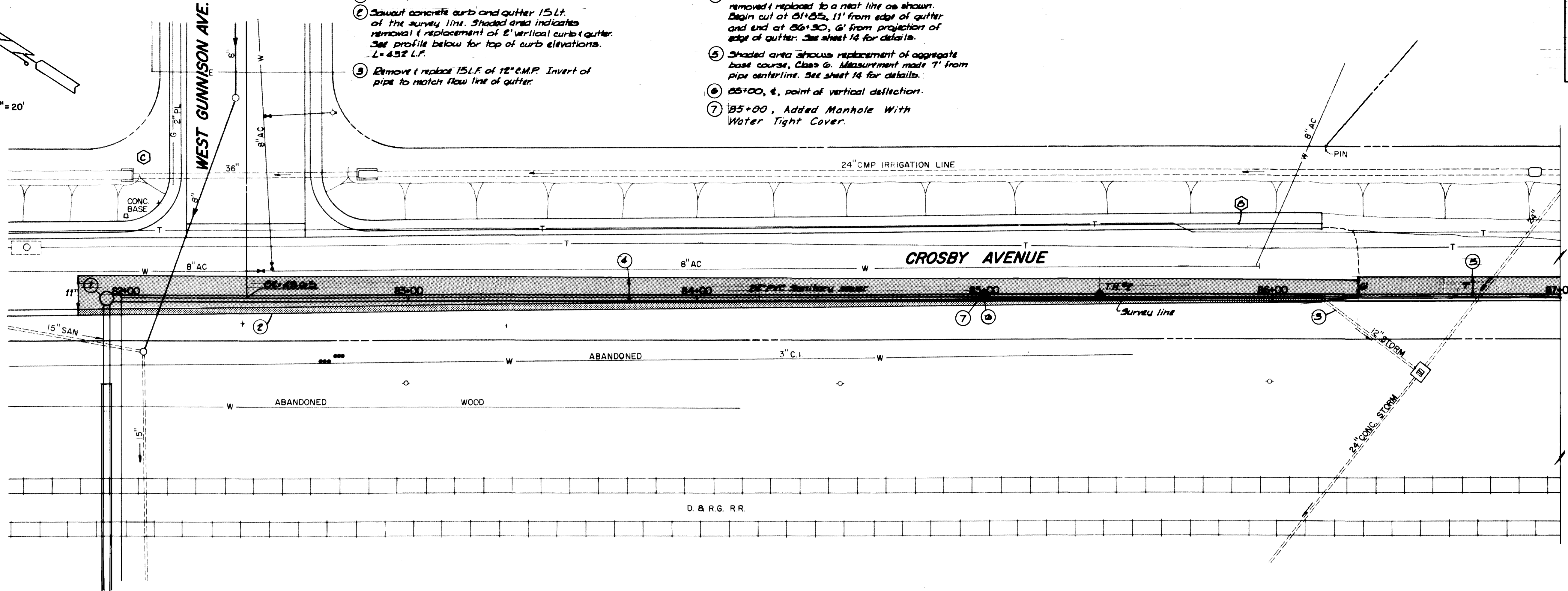


Construction Notes:

- ① 81+95, 6" diameter manhole
- ② Sawcut concrete curb and gutter 15 ft. of the survey line. Shaded area indicates removal & replacement of 2" vertical curb & gutter. See profile below for top of curb elevations. L=452 L.F.
- ③ Remove & replace 15 L.F. of 12" C.M.P. Invert of pipe to match flow line of gutter.
- ④ Shaded area shows pavement to be cut, removed & replaced to a neat line as shown. Begin cut at 81+85, 11' from edge of gutter and end at 86+50, 6' from projection of edge of gutter. See sheet 14 for details.
- ⑤ Shaded area shows replacement of aggregate base course, Class G. Measurement made 7' from pipe centerline. See sheet 14 for details.
- ⑥ 85+00, 4', point of vertical deflection.
- ⑦ 85+00, Added Manhole With Water Tight Cover.

Bench Marks

- ⓐ Chisel square top curb 50' north of end of CG 136, east end of Crosby Ave. Elev. = 4545.607
- ⓑ Chisel square top retaining wall irrigation structure, NE corner intersection West Gunnison & Crosby Elev. = 4554.792



REVISION Δ	DESCRIPTION	DATE	DRAWN BY <i>Lesley</i>	DATE <i>1-87</i>
REVISION Δ			CHECKED BY <i>JHT</i>	DATE <i>1-87</i>
REVISION Δ			APPROVED BY <i>JHT</i>	DATE <i>1-87</i>
REVISION Δ			FIELD BOOK NO. <i>LL #11</i>	PAGE <i>375-411</i>

**DEPARTMENT OF PUBLIC WORKS AND UTILITIES
ENGINEERING DIVISION
CITY OF GRAND JUNCTION, COLORADO**

SCALE: PLAN 1" = 20' PROFILE 1" = 5'

**CROSBY AVENUE SEWER PROJECT
RIVER ROAD TO COLORADO AVENUE
PLAN & PROFILE**

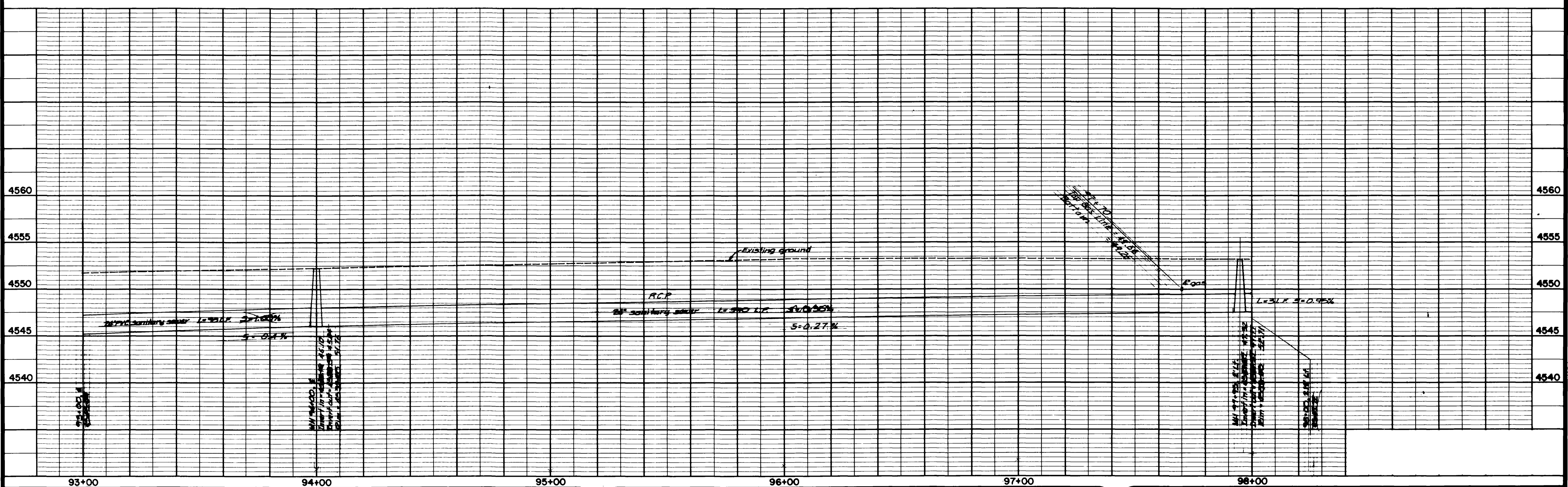
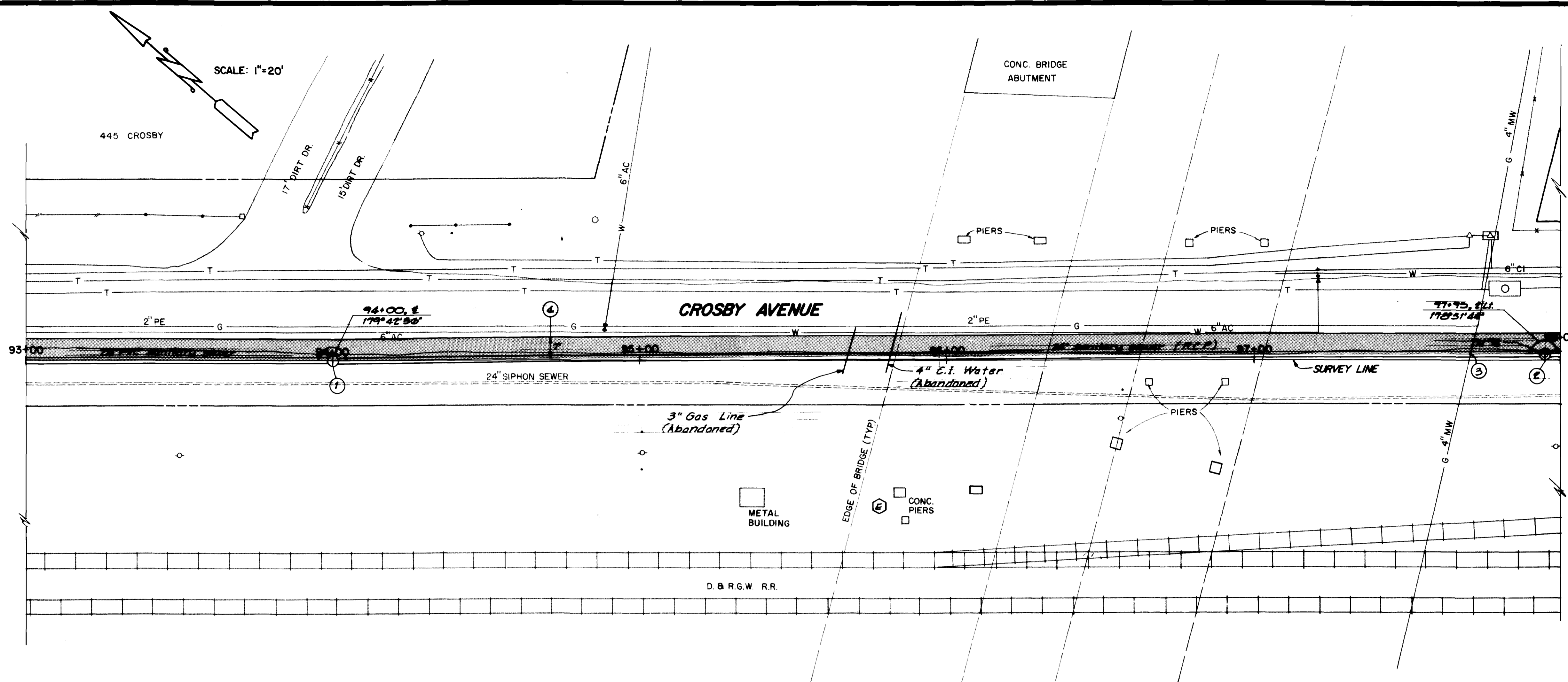
SHEET NO. <i>5</i>
OF <i>22</i>
FILE NO.

Construction Notes

- ① 94+00, E } 48" diameter manhole
- ② 97+95, 2' Lt. }
- ③ 7ft hole gas line to obtain elevation.
- ④ Shaded area shows replacement of aggregate base course, class G. Measurement made 1' from pipe centerline. See sheet 14 for details.

Bench Mark

- ⑤ Chisel square on railroad signal light base, NW corner, on west side of Crosby under Highway 340 viaduct. Elev. = 4560.846



REVISION	DESCRIPTION	DATE
Δ		
Δ		
Δ		
Δ		

DRAWN BY	LESLEY	DATE	1-87
CHECKED BY	JHT	DATE	1-87
APPROVED BY	JHT	DATE	1-87
FIELD BOOK NO.	LL#11	PAGE	375-411

SCALE	
PLAN	PROFILE
HORIZ. 1"=20'	HORIZ. 1"=20'
	VERT. 1"=5'

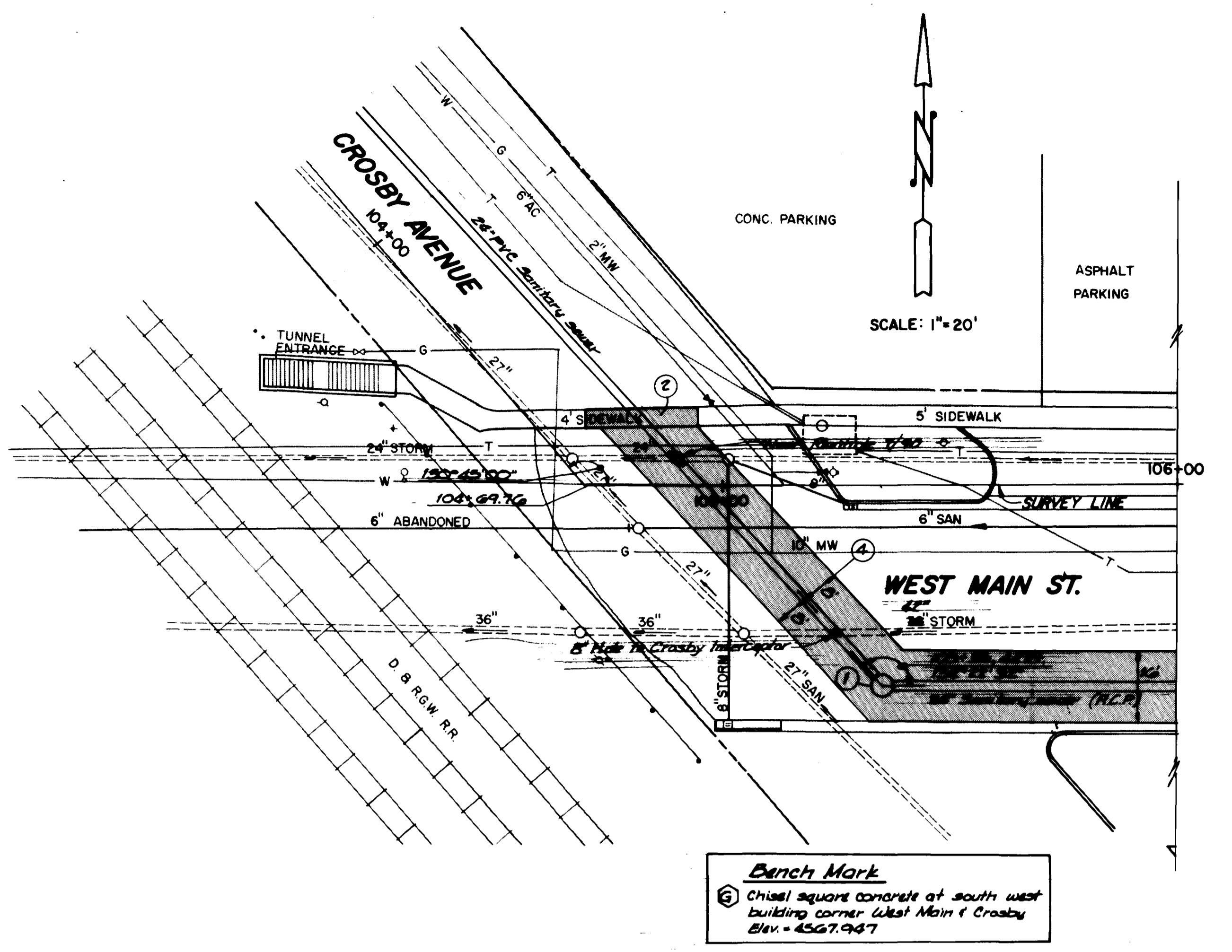
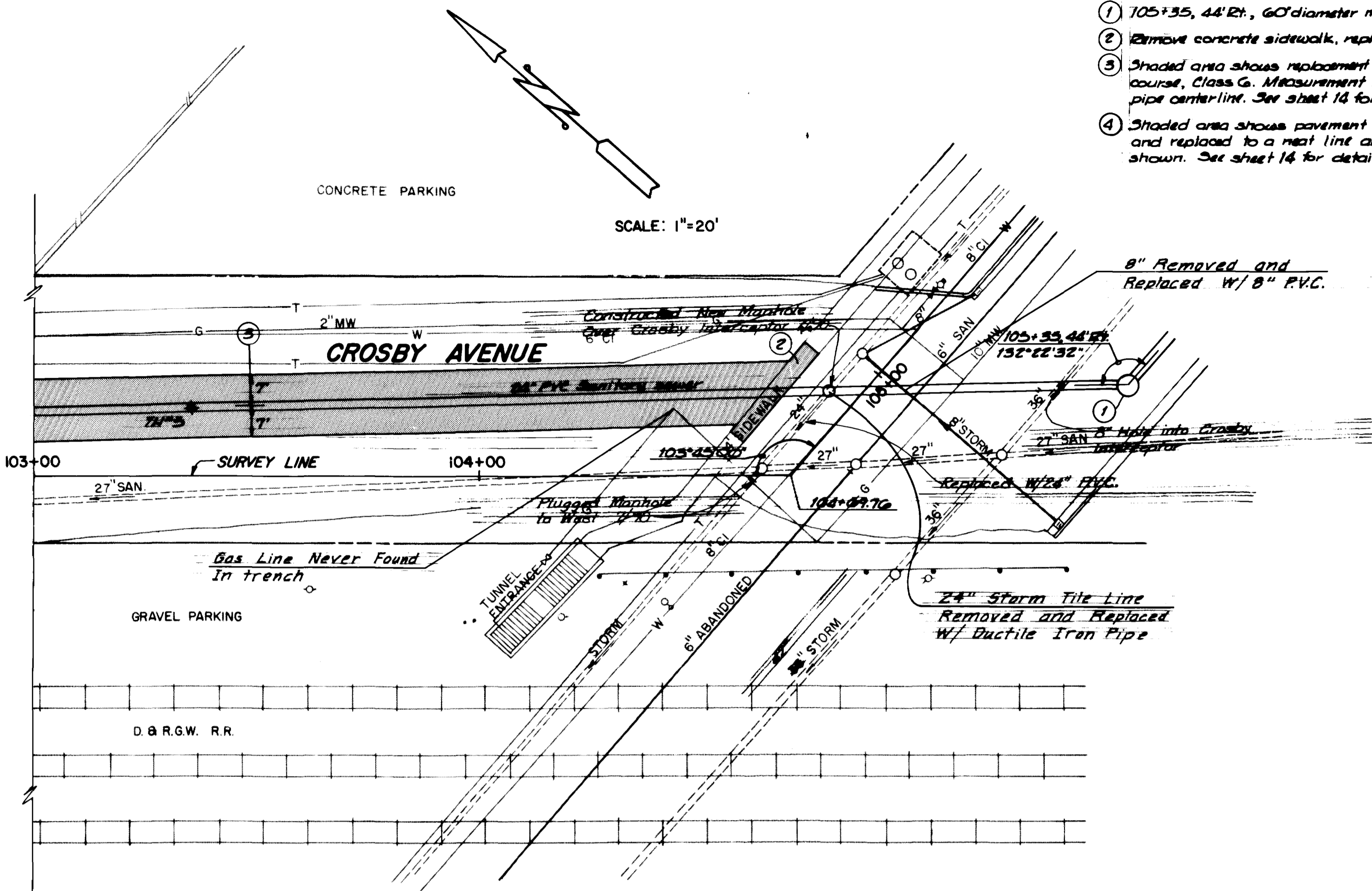
DEPARTMENT OF PUBLIC WORKS AND UTILITIES
ENGINEERING DIVISION
CITY OF GRAND JUNCTION, COLORADO

CROSBY AVENUE SEWER PROJECT
RIVER ROAD TO COLORADO AVENUE
PLAN & PROFILE

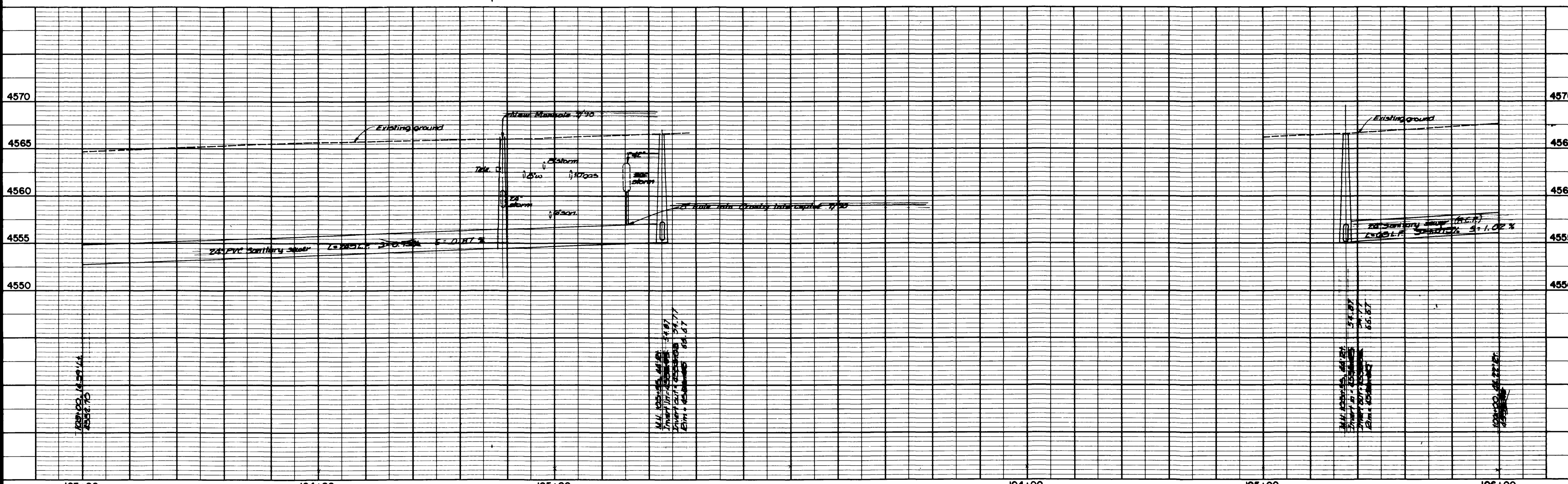
SHEET NO.	7
OF	22
FILE NO.	

Construction Notes:

- ① 105+35, 44' 2", 60" diameter manhole.
- ② Remove concrete sidewalk, replace with pavement.
- ③ Shaded area shows replacement of aggregate base course, Class G. Measurement made 7' from pipe centerline. See sheet 14 for details.
- ④ Shaded area shows pavement to be cut, removed and replaced to a neat line and dimensions as shown. See sheet 14 for details.



Bench Mark
 ⑤ Chisel square concrete at south west building corner West Main & Crosby
 Elev. = 4567.947

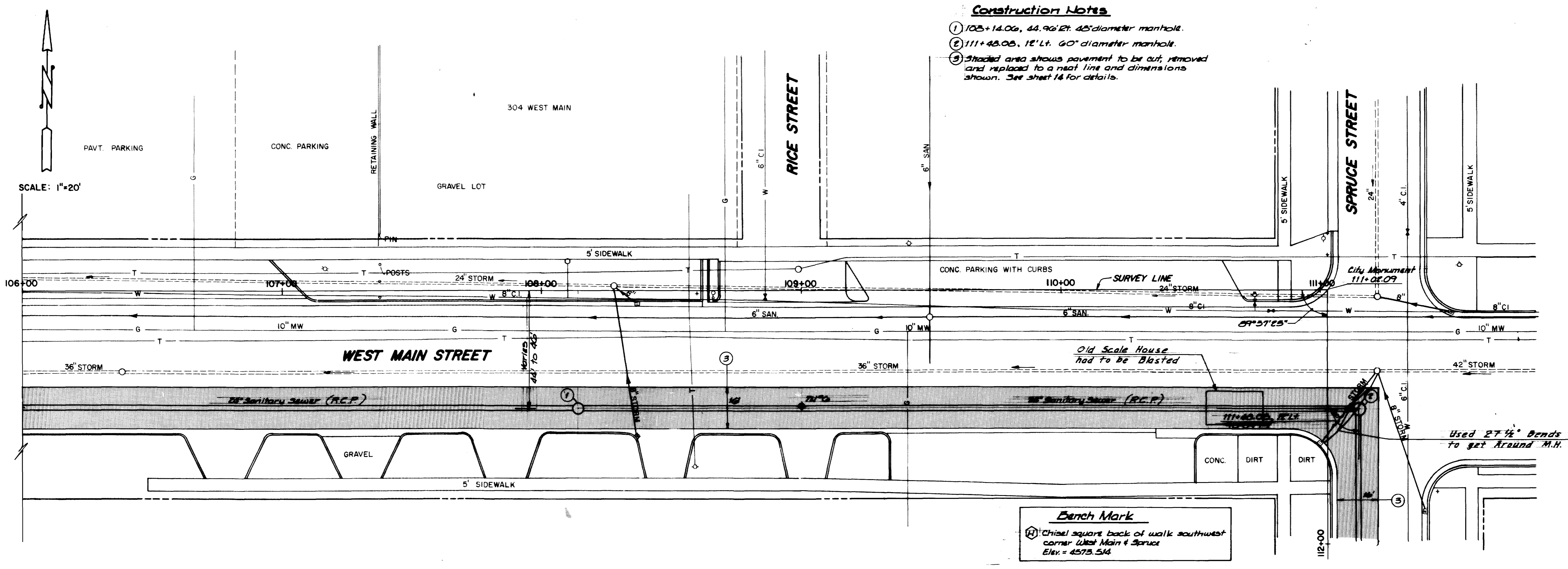


REVISION	DATE	DRAWN BY Les/lu	DATE 1-57	SCALE			
REVISION Δ		CHECKED BY JHT	DATE 1-57	PLAN	PROFILE	DEPARTMENT OF PUBLIC WORKS AND UTILITIES ENGINEERING DIVISION CITY OF GRAND JUNCTION, COLORADO	
REVISION Δ		APPROVED BY JHT	DATE 1-57	HORIZ. 1"=20'	HORIZ. 1"=20'		
REVISION Δ		FIELD BOOK NO. 44#11	PAGE 375-411	VERT. 1"=5'	VERT. 1"=5'		

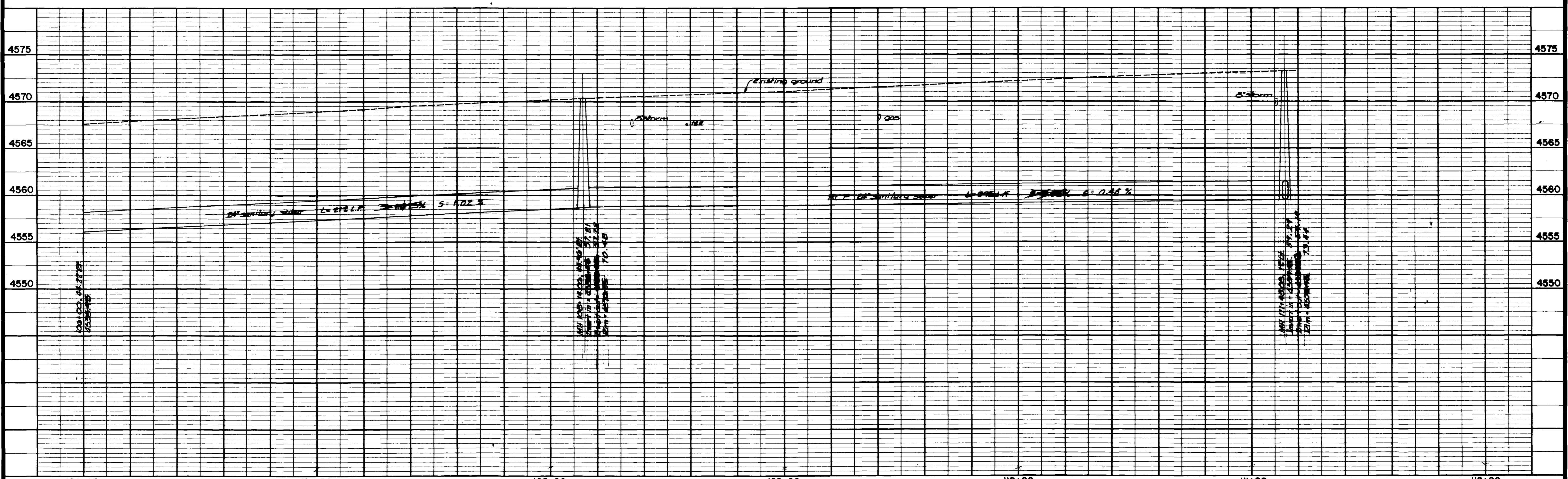
CROSBY AVENUE SEWER PROJECT
RIVER ROAD TO COLORADO AVENUE
PLAN & PROFILE

SHEET NO. 9
OF 22
FILE NO.

- Construction Notes**
- 1) 105+14.06, 44.96' R. 48" diameter manhole.
 - 2) 111+48.05, 12' L. 60" diameter manhole.
 - 3) Shaded area shows pavement to be cut, removed and replaced to a neat line and dimensions shown. See sheet 14 for details.



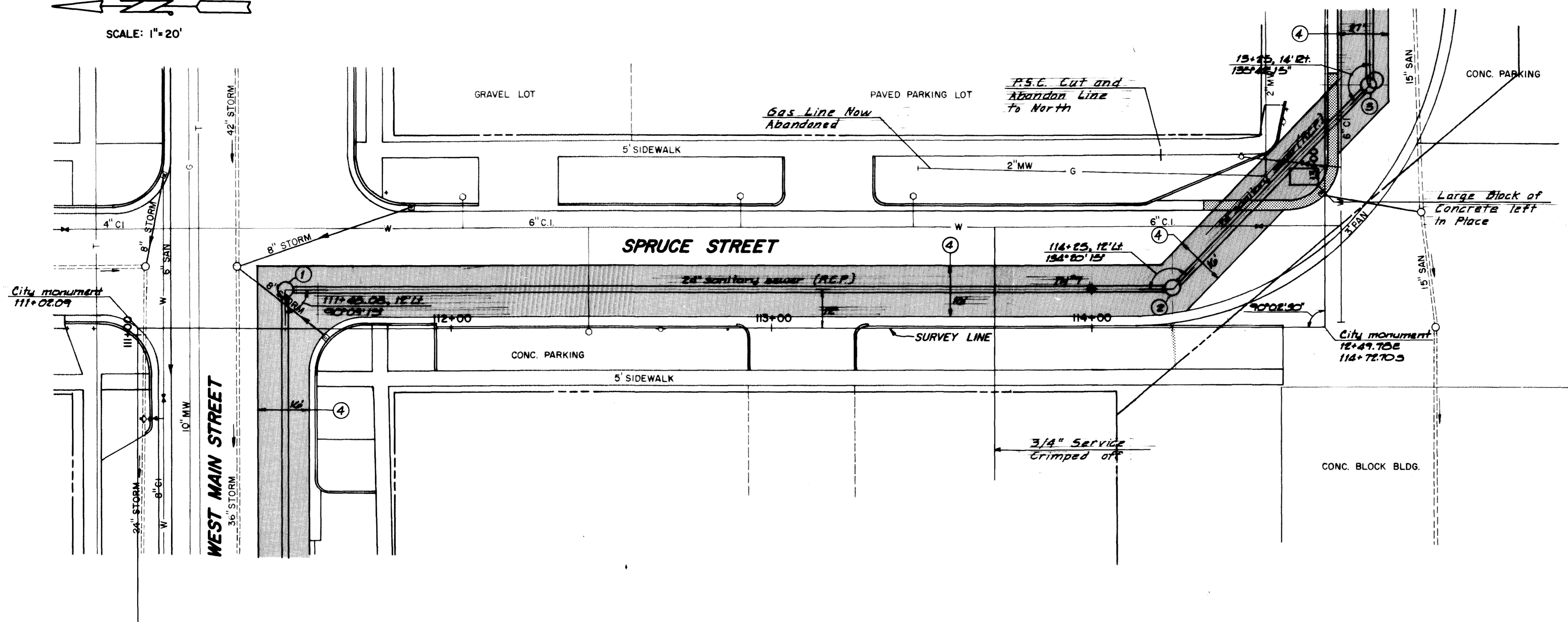
Bench Mark
 (B) Chisel square back of walk southwest corner West Main & Spruce
 Elev. = 4573.514



REVISION	DESCRIPTION	DATE	DRAWN BY Lesku	DATE 1-87	SCALE PLAN 1"=20' PROFILE 1"=5'	DEPARTMENT OF PUBLIC WORKS AND UTILITIES ENGINEERING DIVISION CITY OF GRAND JUNCTION, COLORADO	CROSBY AVENUE SEWER PROJECT RIVER ROAD TO COLORADO AVENUE PLAN & PROFILE	SHEET NO. 10
REVISION			CHECKED BY JHT	DATE 1-87				OF 22
REVISION			APPROVED BY JHT	DATE 1-87				FILE NO.
REVISION			FIELD BOOK NO. LL#11	PAGE 375-411				



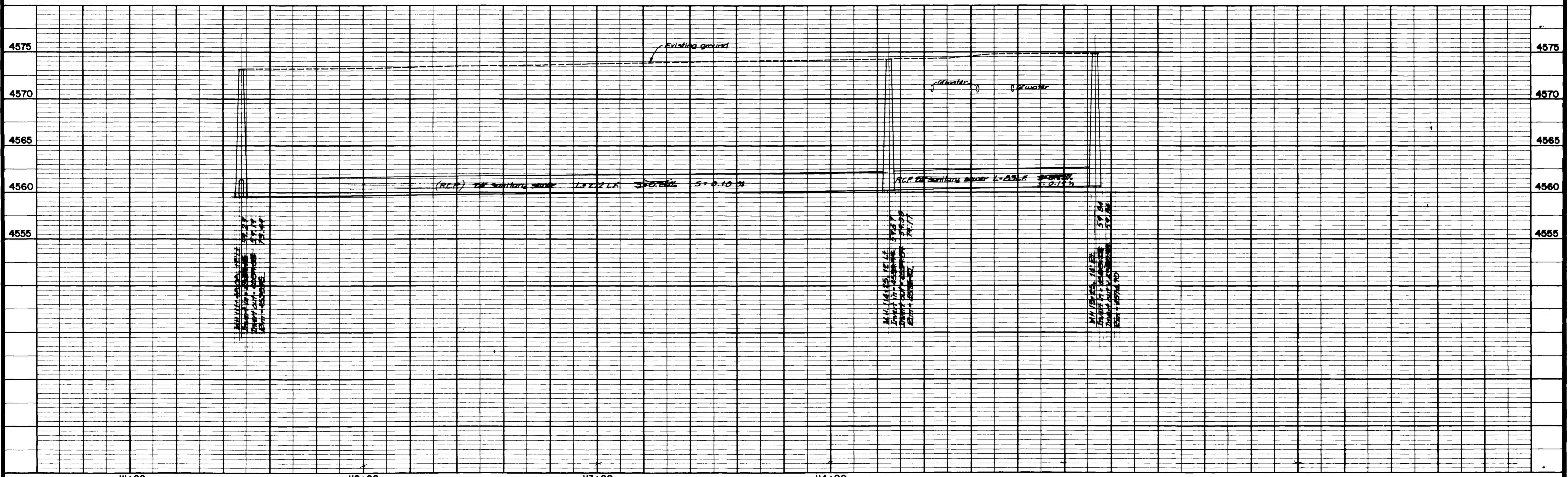
SCALE: 1"=20'



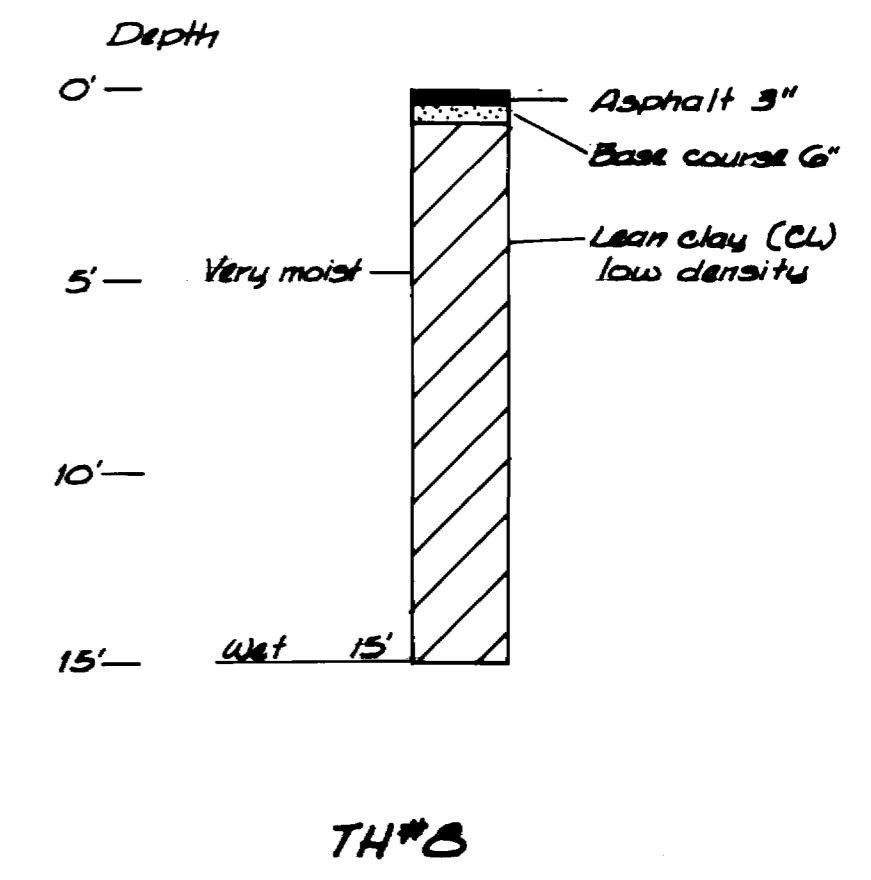
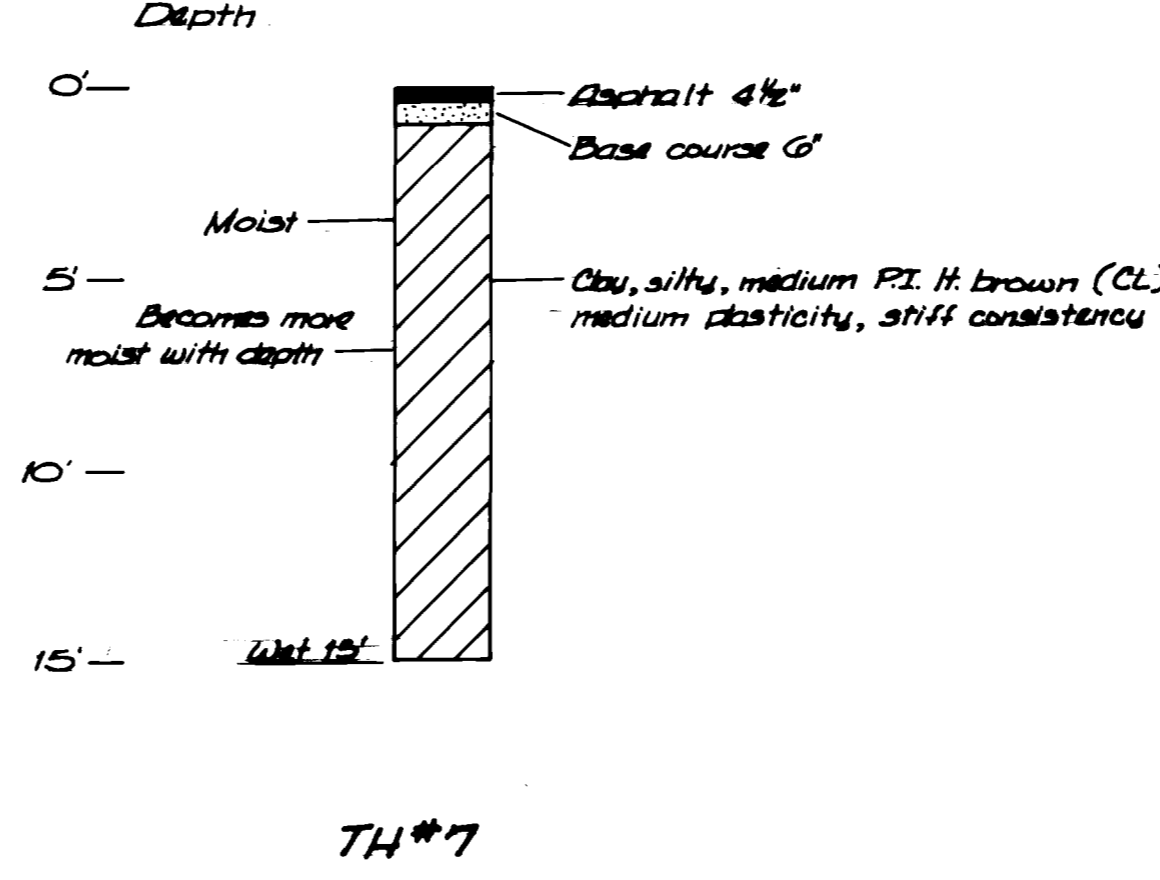
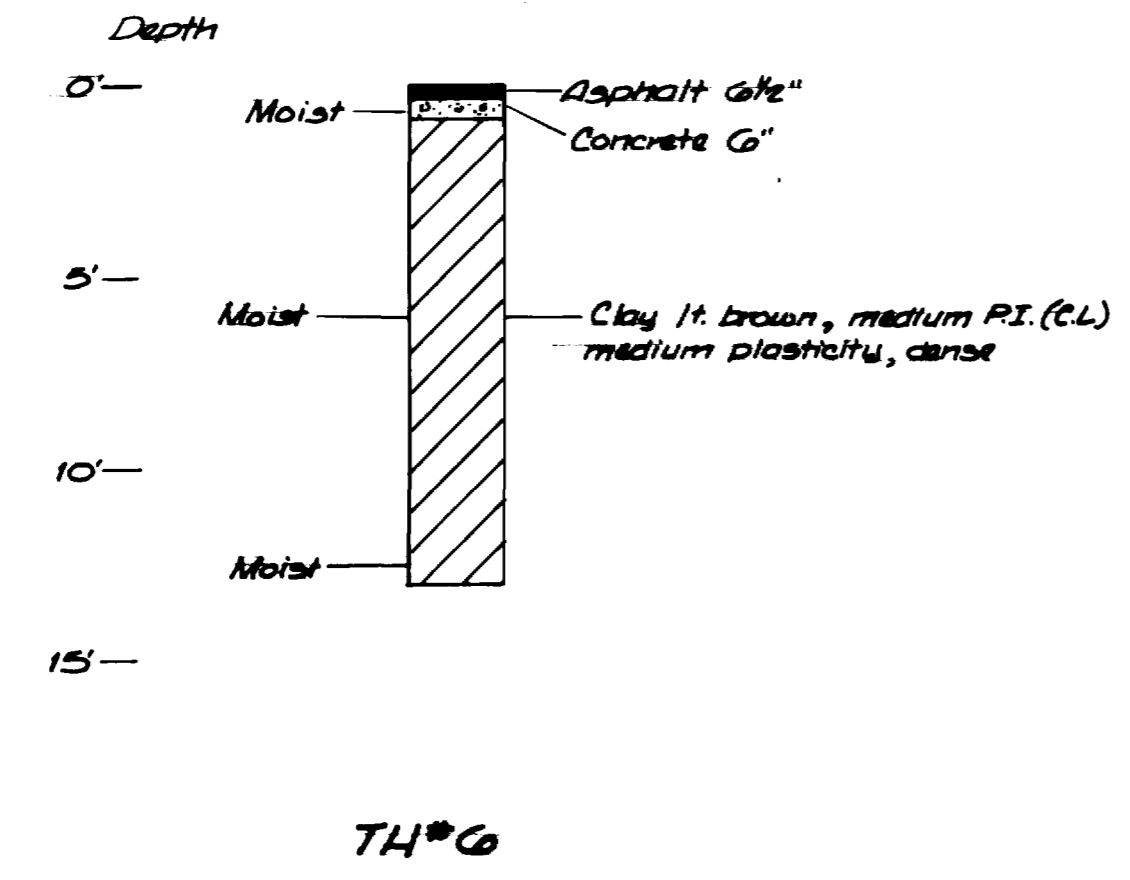
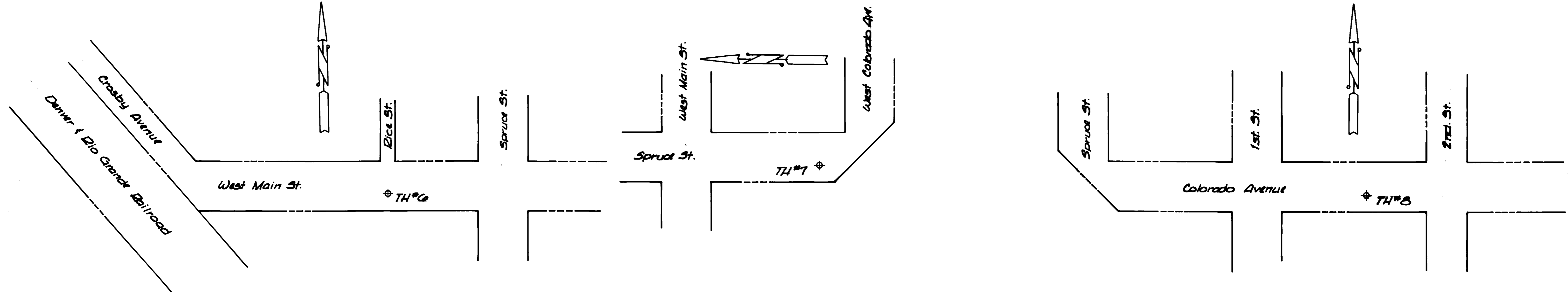
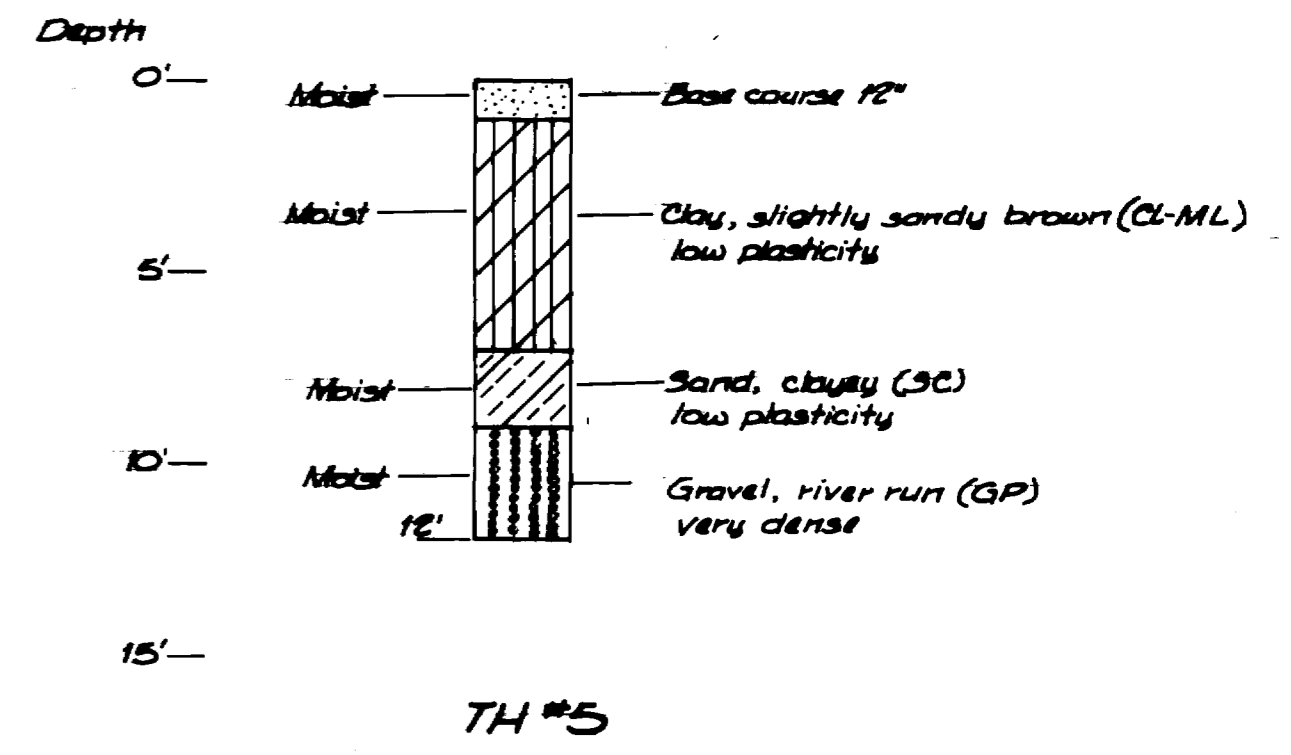
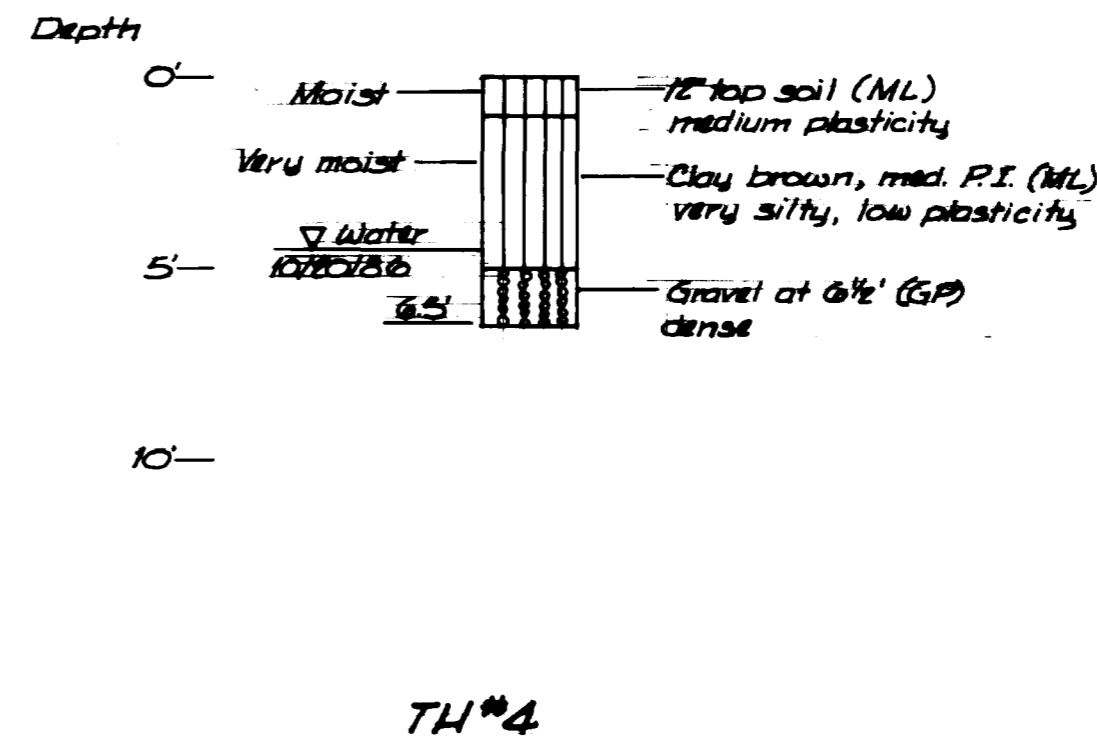
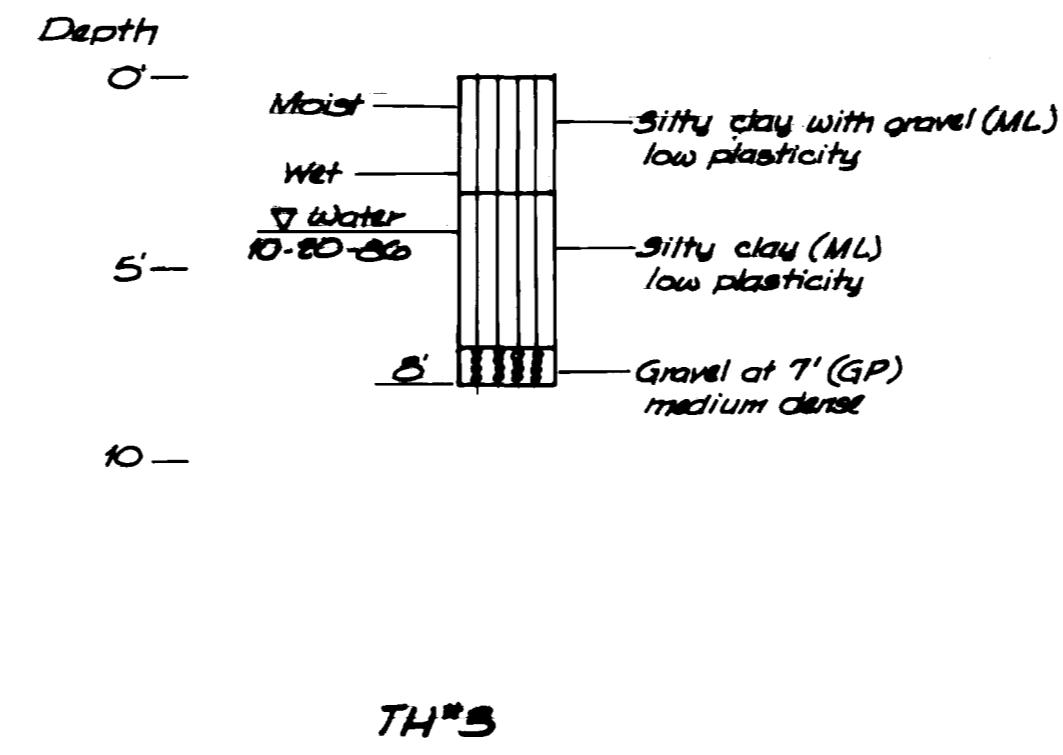
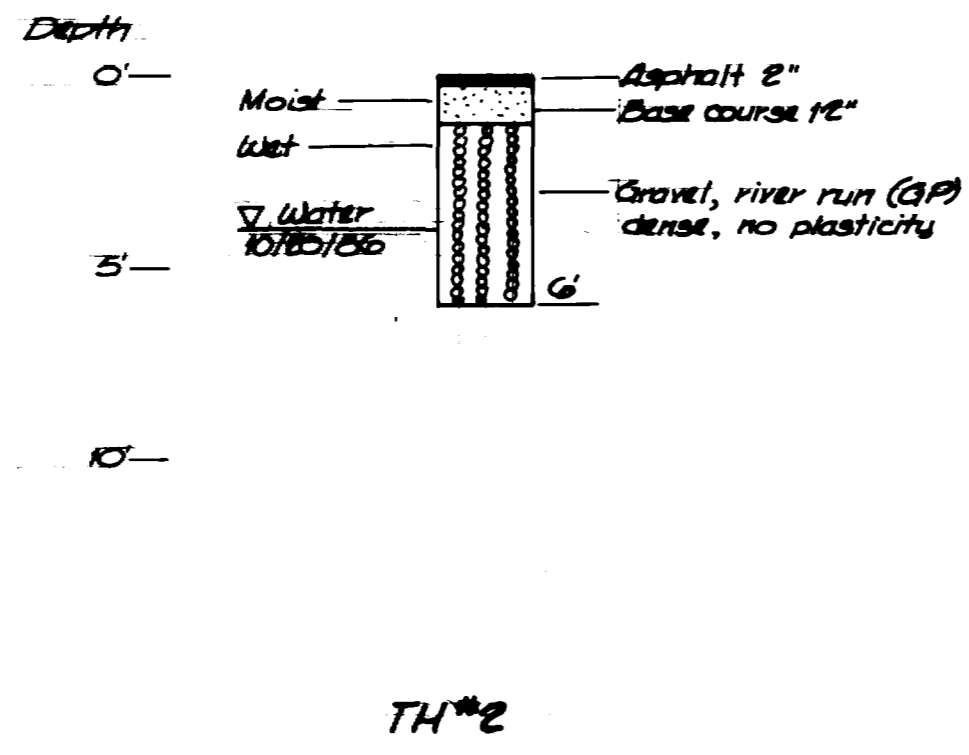
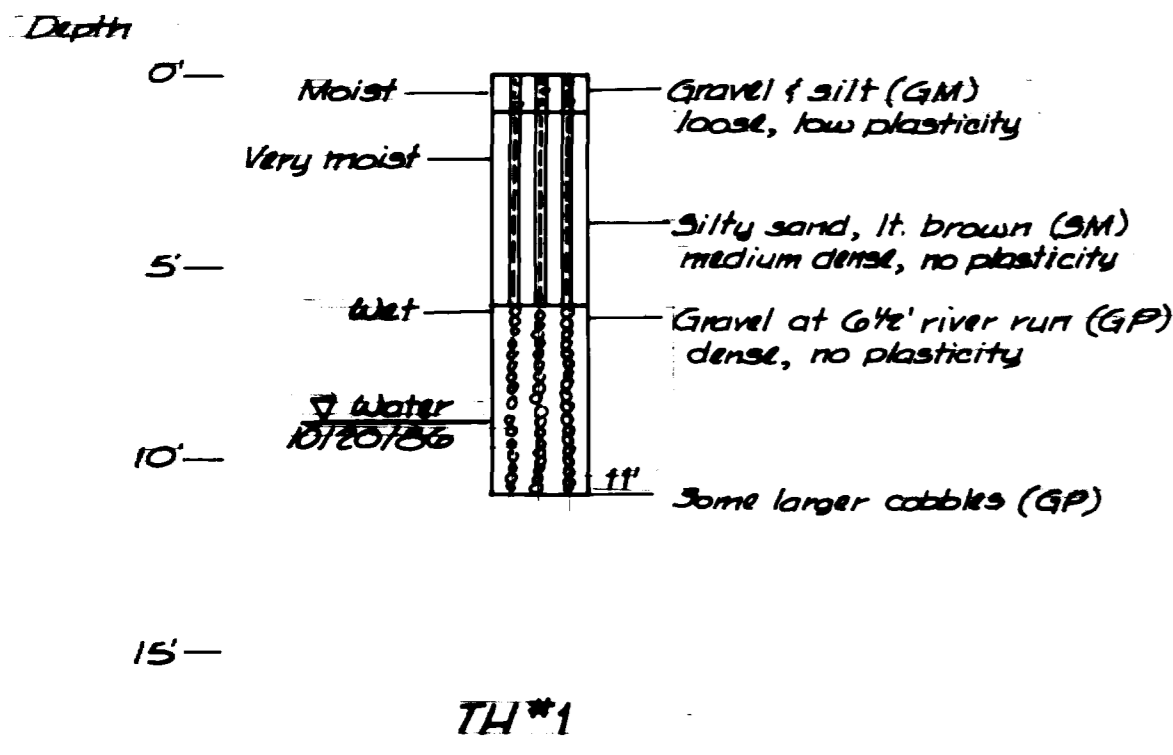
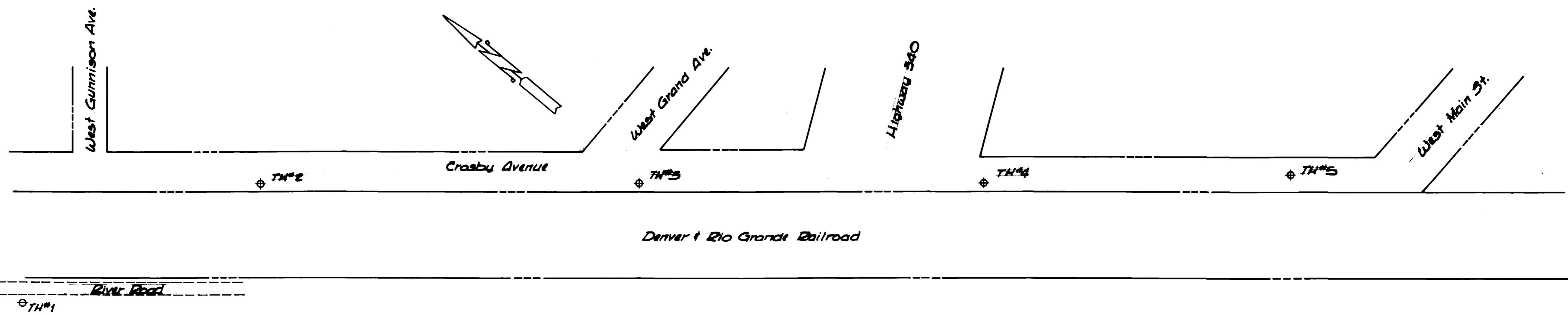
- Construction Notes**
- ① 111+45.05, 12' Lt.
 - ② 114+25, 12' Lt.
 - ③ 15+25, 14' Lt.
 - ④ Shaded area shows pavement to be cut, removed and replaced to a neat line and dimension as shown. See sheet 14 for details.

Bench Mark

① Chisel square back of walk NE corner West Colorado / Spruce Elev. = 4575.615



REVISION	DESCRIPTION	DATE	DRAWN BY LBJ/ELU	DATE 1-87	SCALE PLAN: 1"=20' PROFILE: 1"=20' HORIZ. 1"=20' VERT. 1"=5'	DEPARTMENT OF PUBLIC WORKS AND UTILITIES ENGINEERING DIVISION CITY OF GRAND JUNCTION, COLORADO	CROSBY AVENUE SEWER PROJECT RIVER ROAD TO COLORADO AVENUE PLAN & PROFILE	SHEET NO. 11
REVISION Δ			CHECKED BY JHT	DATE 1-87				OF 22
REVISION Δ			APPROVED BY JHT	DATE 1-87				FILE NO.
REVISION Δ			FIELD BOOK NO. 44 #11	PAGE 375-411				

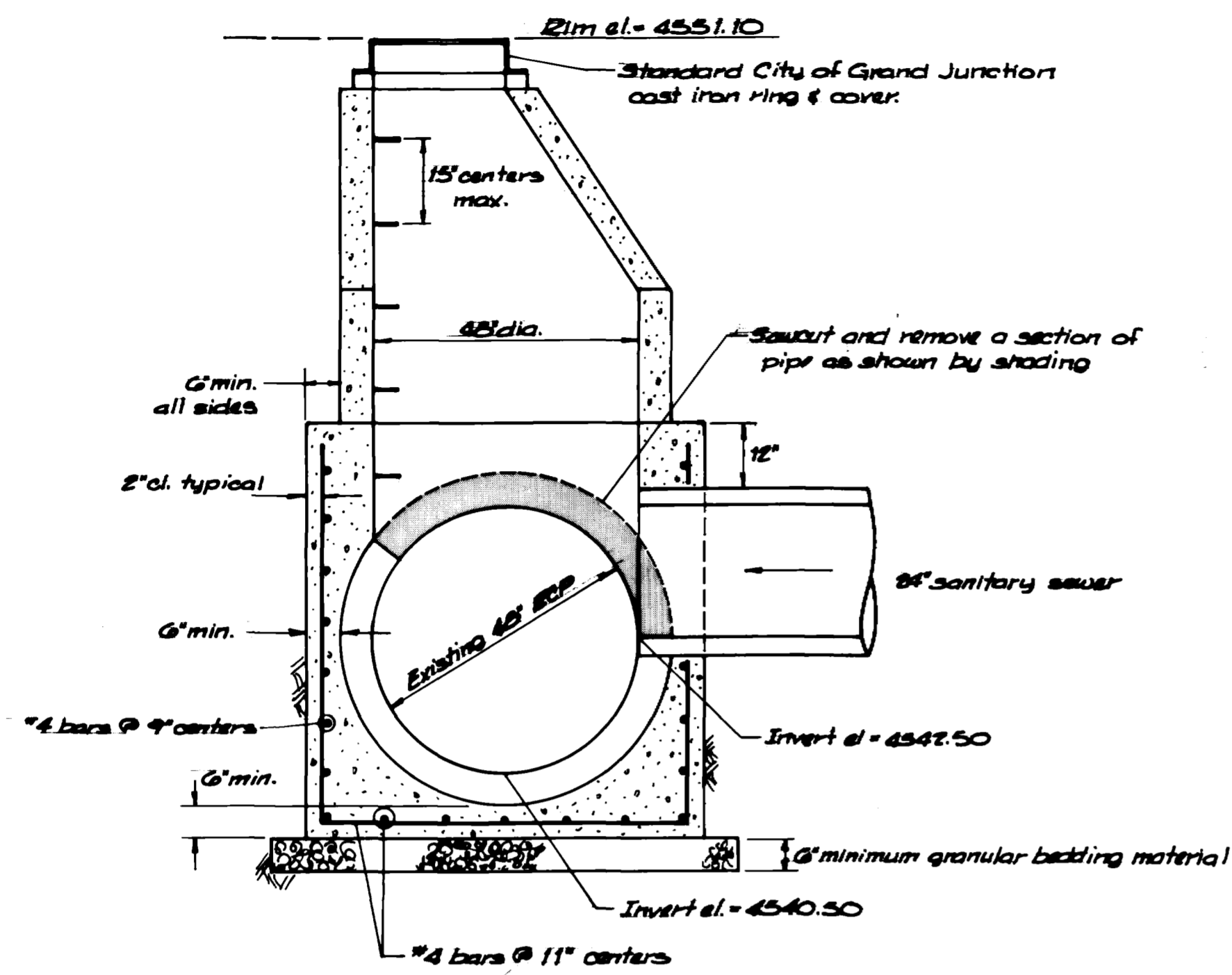


DESCRIPTION	DATE	DRAWN BY <u>Lesley</u>	DATE <u>1-27</u>	SCALE
REVISION		CHECKED BY <u>JHT</u>	DATE <u>1-27</u>	PLAN
REVISION		APPROVED BY <u>JHT</u>	DATE <u>1-27</u>	PROFILE
REVISION		FIELD BOOK NO. <u>LL*11</u>	PAGE <u>375-411</u>	HORIZ. <u>N/A</u>
				VERT.

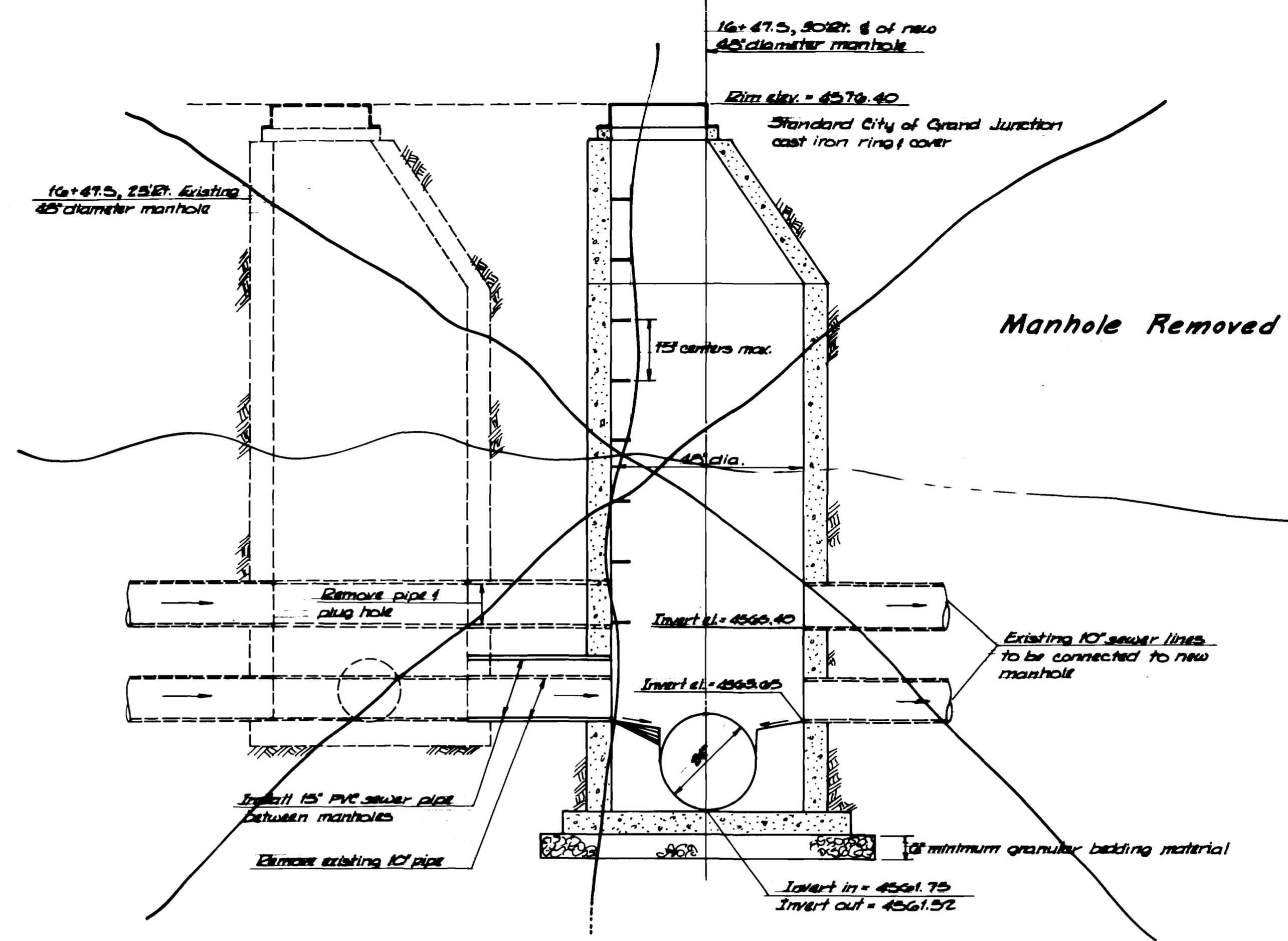
DEPARTMENT OF PUBLIC WORKS AND UTILITIES
ENGINEERING DIVISION
CITY OF GRAND JUNCTION, COLORADO

CROSBY AVENUE SEWER PROJECT
RIVER ROAD TO COLORADO AVENUE
SOIL BORING LOGS

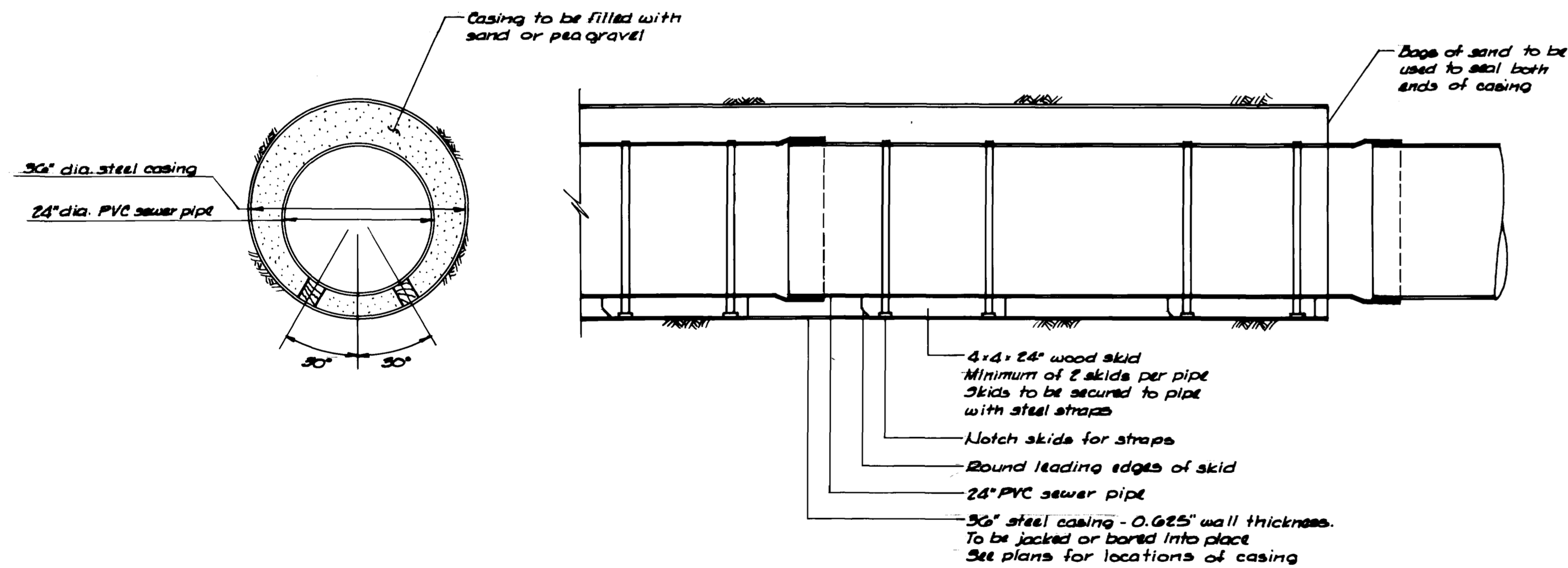
SHEET NO. <u>13</u>
OF <u>22</u>
FILE NO.



Manhole Detail
Station 78+38, 5' RT.



Manhole Detail
Station 16+47.5, 30' RT.



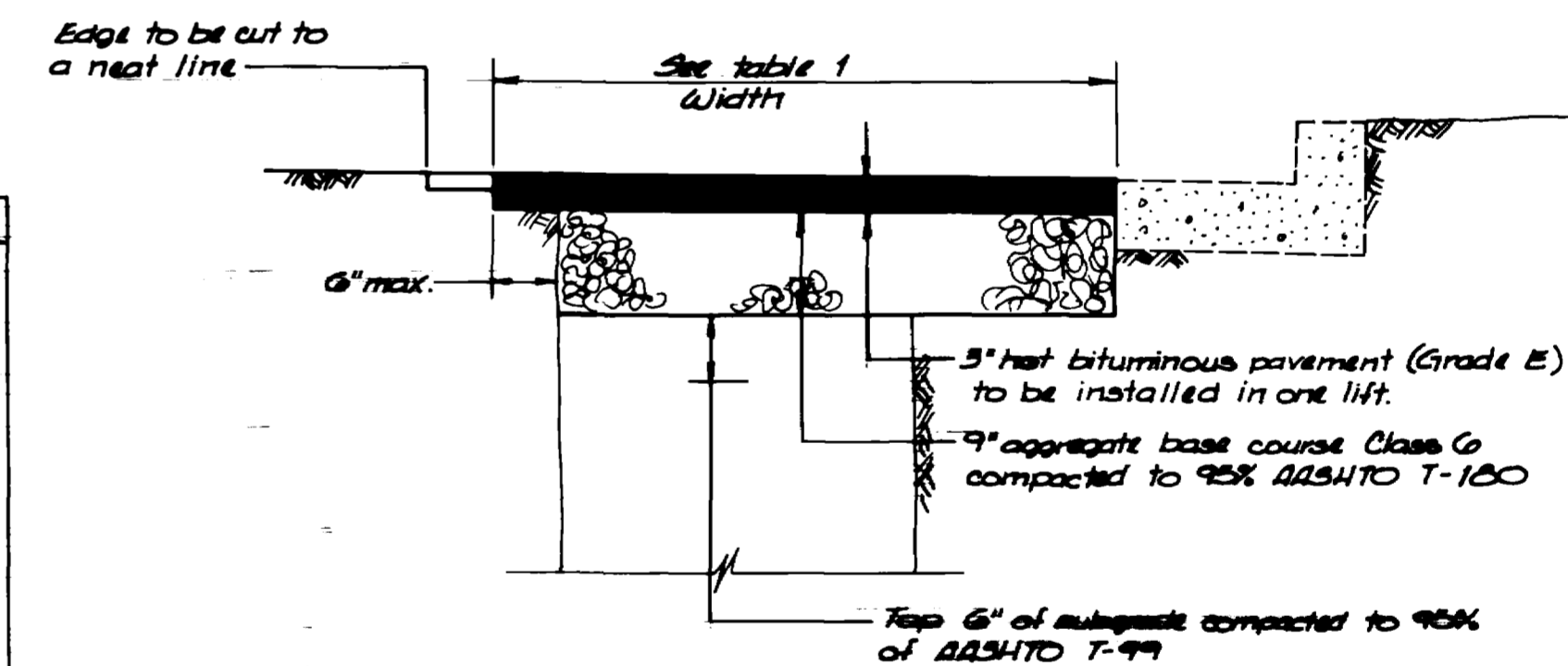
Pipe Jacking and Encasement Details

Table 1

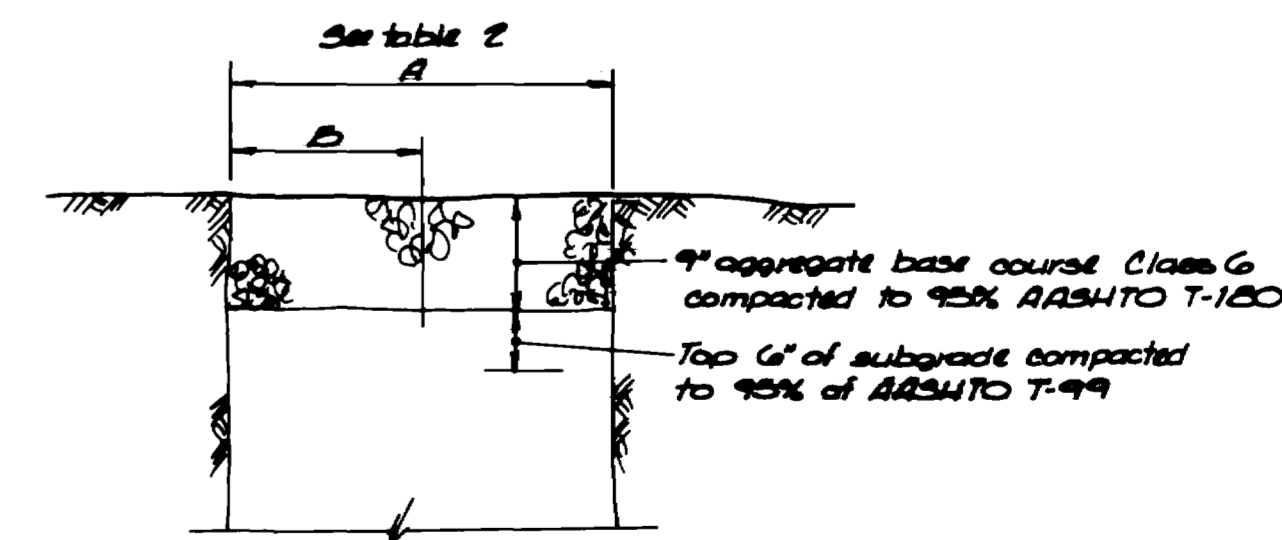
Stations	Width
81+85 to 86+30	11' to 6'
104+65 to 105+35	16'
105+25 to 111+48.08	16'
111+48.08 to 114+25	16'
114+25 to 15+25	16'
15+25 to 15+50	17'
15+50 to 15+70	17'
15+70 to 15+85	17'
16+25 to 16+79	16'
16+79 to 17+05	14'

Table 2

Stations	A	B
86+30 to 102+05		7'
102+05 to 104+65	14'	



Paved Areas



Unpaved Areas
Trench Patching Details

REVISION	DESCRIPTION	DATE	DRAWN BY	DATE	CHECKED BY	DATE	APPROVED BY	DATE	FIELD BOOK NO.	PAGE
1			Lesley	12/26	JHT	1-27	JHT	1-27	LL# 11	375-411
2										
3										
4										

SCALE	PLAN	PROFILE
	HORIZ. N/A	HORIZ. _____
		VERT. _____

DEPARTMENT OF PUBLIC WORKS AND UTILITIES
ENGINEERING DIVISION
CITY OF GRAND JUNCTION, COLORADO

CROSBY AVENUE SEWER PROJECT
RIVER ROAD TO COLORADO AVENUE
DETAILS

SHEET NO. 14
OF 22
FILE NO.

