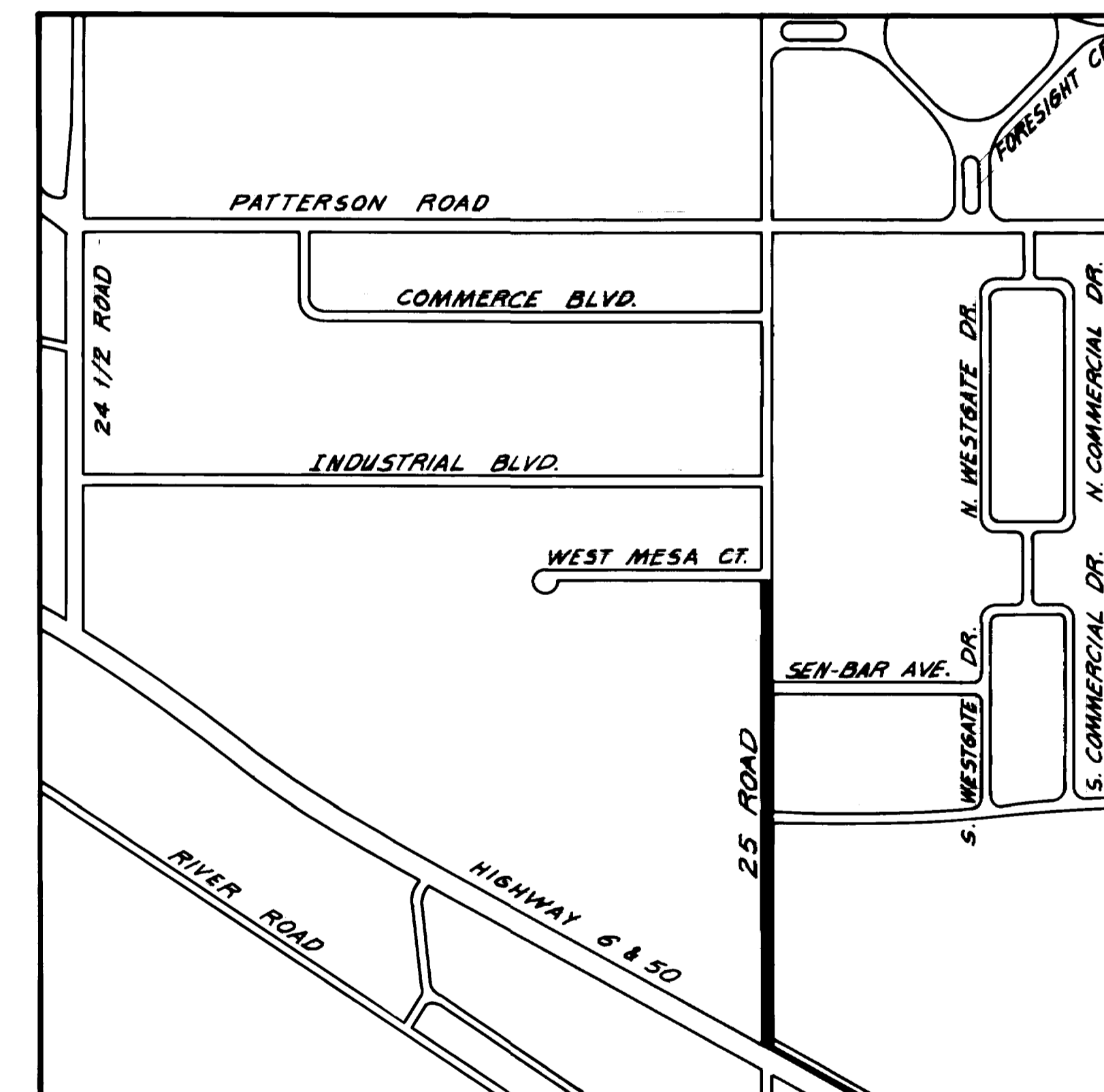


# 25 ROAD SEWER EXTENSION - 1988

WEST MESA COURT TO HIGHWAY 6 & 50

1. Cover Sheet
2. Drafting Standard & Abbreviations
3. Summary of Approximate Quantities / Bid Tabulation Sheet
- 4-6. Plan & Profile Sheets
7. Standard Sanitary Sewer Details (SS-1)
- 8-11. Traffic Control for Highway Construction CDOH S-614-50

VICINITY MAP



CITY OF GRAND JUNCTION  
DEPARTMENT OF PUBLIC WORKS AND UTILITIES

ENGINEERING DIVISION

# SUMMARY OF APPROXIMATE QUANTITIES

Item No	Ref No.	Contract Item 25 ROAD SEWER EXTENSION	Unit	Quantity															
1.		Furnish & Install 8" Dia. P.V.C. Sewer Pipe ASTM D 3034 SDR 35 Including Excavation and Backfill	L.F.	1250															
2.		Furnish & Install 4" Dia. P.V.C. Sewer Pipe ASTM D3034SDR35 Including excavation and Backfill	L.F.	60															
3.		4" Sewer Taps. Furnish and Install Saddles	Ea.	4															
4.		Furnish & Install 4'0 Manholes Including Ring and Cover, less than 8' deep.	Ea.	2															
5.		4'0 Manholes Including Ring & Cover Greater than 8' Deep.	Ea.	3															
6.		Granular Stabilization Material Under Sewer Pipe Where Authorized (Including Over-excavation).	Tons	300															
7.		Saw Cut and Remove Asphalt	S.Y.	472															
8.		Aggregate Base Course Class 6, 12" Thickness (Haul, Water & Compact)	S.Y.	1620															
9.		Hot Bituminous Pavement 3" Thickness (Grading E) (Haul, Asphalt & Compact).	S.Y.	342															
10.		Hot Bituminous Pavement 4" Thickness (Grading E) (Haul, Asphalt & Compact).	S.Y.	130															
11.		Exploratory Excavation	L.S.	L.S.															
12.		Traffic Control	L.S.	L.S.															
13.		Flagmen (per person)	Day	10															
14.		Mobilization	L.S.	L.S.															
15.		Project Signs	L.S.	L.S.															
16.		Informational News Letter (Approximately 40 Copies Per Week).	Week	4															
17.		Remove 4' Wide Valley Pan	L.F.	16															
18.		Replace 4' Wide Valley Pan	L.F.	16															
19.		Remove & Reset 4' High Chain Link Fence	L.S.	L.S.															
20.		Replace and Remove Temporary Patch on 25 Road	L.S.	L.S.															

GRAND MESA MARINE

7+82, 15.5' Lt.  
4" Service for Grand Mesa Marine  
(Elev. 588)

Contractor is to Stay Off This Paved Parking Area.

7+07, 30' Lt.  
End 4" Service at R Cap End  
(Elev. 588)  
7+82, 15.5' Lt.  
4" Manhole  
4" Service Stubbed to R  
(Elev. 588 at Manhole)

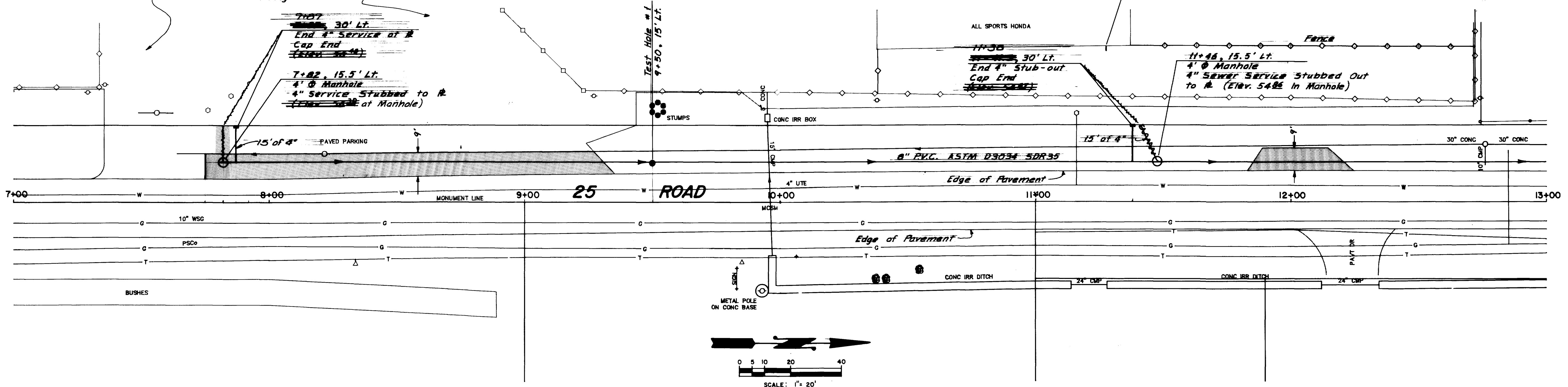
Test Hole # 1  
9+50, 15' Lt.

11+28, 360' Lt.  
Sewer Service  
Info. From All Sports Honda  
Exact Location & Elev. Unknown

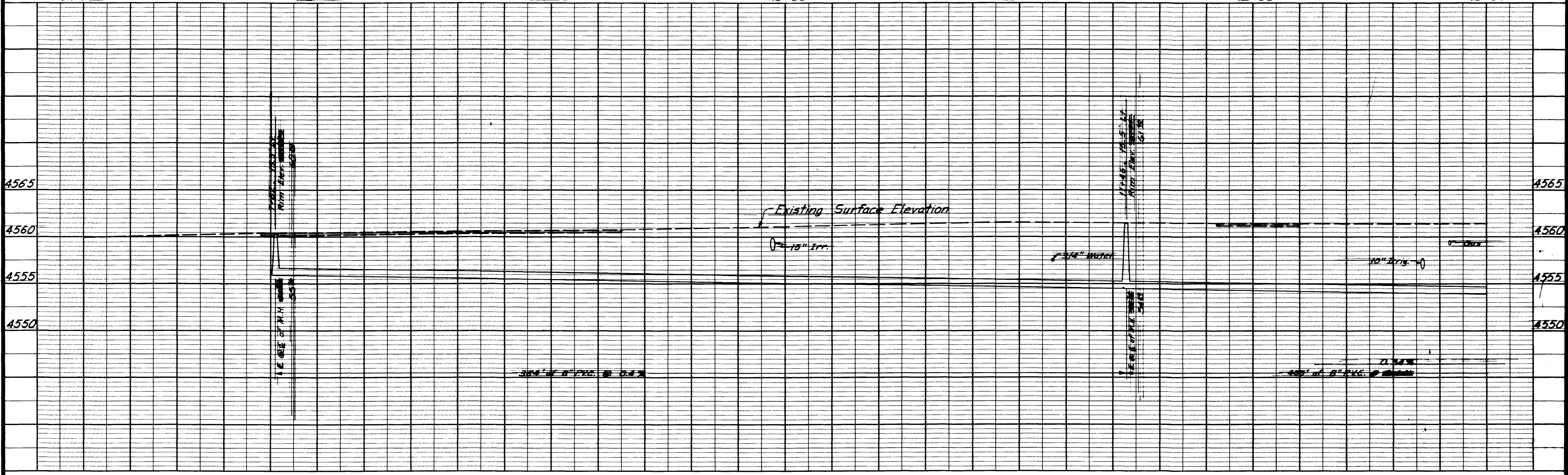
ALL SPORTS HONDA

11+38, 30' Lt.  
End 4" Stub-out  
Cap End  
(Elev. 588)

11+48, 15.5' Lt.  
4" Manhole  
4" Sewer Service Stubbed Out to R  
(Elev. 548 in Manhole)



7+00      8+00      9+00      10+00      11+00      12+00      13+00



DESCRIPTION	DATE	DRAWN BY Chris Kadel	DATE 1-24-88
REVISION $\Delta$ As Built - Ok	5-23-88	CHECKED BY	DATE
REVISION $\Delta$		APPROVED BY	DATE
REVISION $\Delta$		FIELD BOOK NO.	PAGE

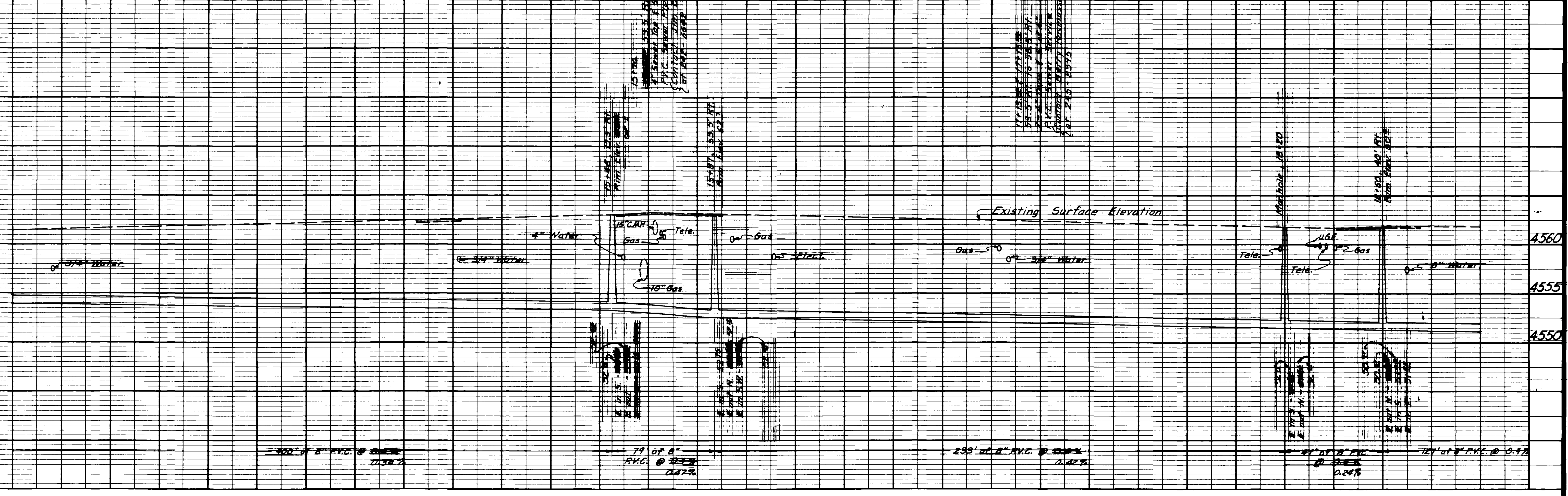
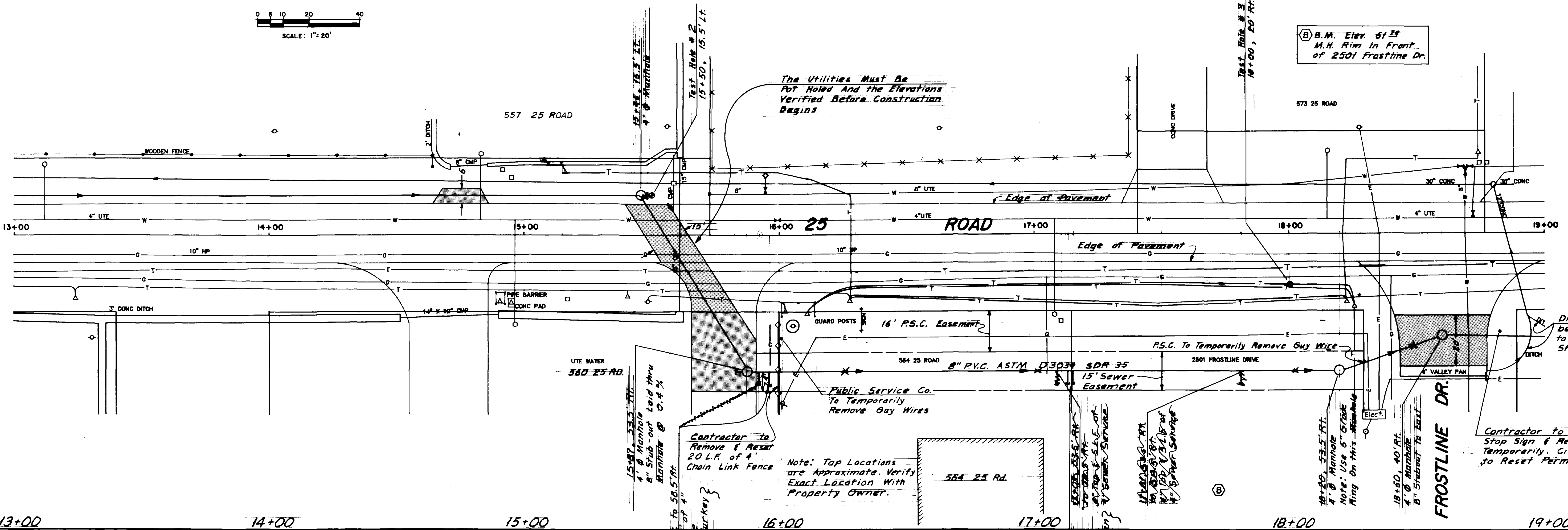
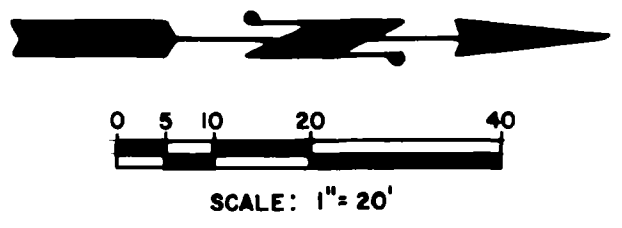
SCALE	PLAN	PROFILE
	HORIZ. 1" = 20'	HORIZ. 1" = 20'
		VERT. 1" = 5'

DEPARTMENT OF PUBLIC WORKS AND UTILITIES  
ENGINEERING DIVISION  
CITY OF GRAND JUNCTION, COLORADO

25 ROAD SEWER EXTENSION - 1988  
WEST MESA COURT TO HIGHWAY 6 & 50

SHEET NO. 4
OF 11
FILE NO.





REVISION	DESCRIPTION	DATE
REVISION A	As Built	5-23-88
REVISION B		
REVISION C		
REVISION D		

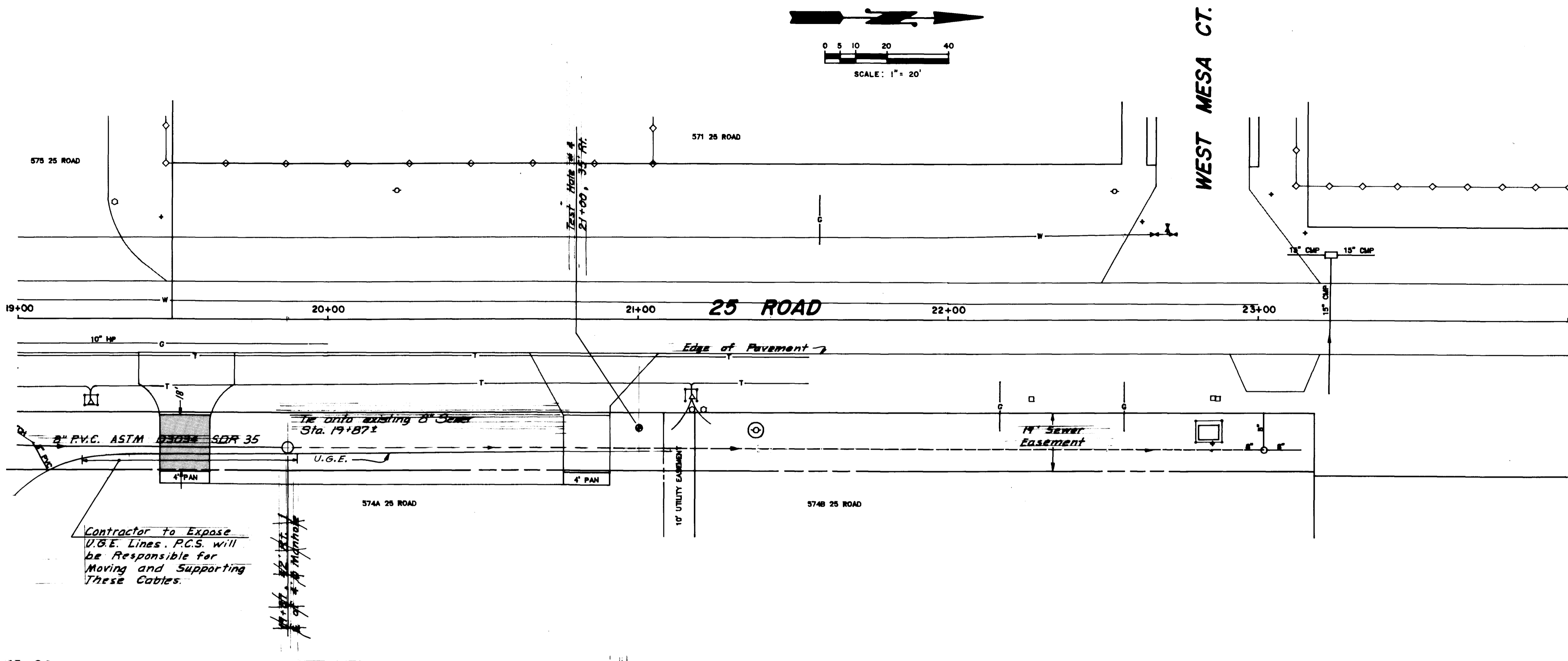
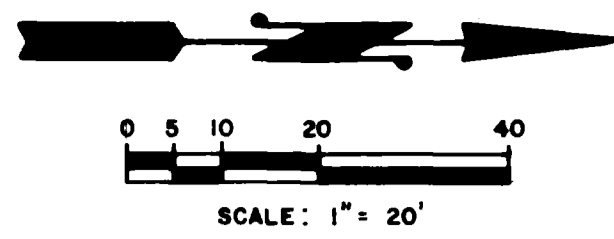
DRAWN BY Chris Kadel DATE 1-24-88  
 CHECKED BY \_\_\_\_\_ DATE \_\_\_\_\_  
 APPROVED BY \_\_\_\_\_ DATE \_\_\_\_\_  
 FIELD BOOK NO. \_\_\_\_\_ PAGE \_\_\_\_\_

SCALE  
 PLAN HORIZ. 1" = 20'  
 PROFILE HORIZ. 1" = 20'  
 VERT. 1" = 5'

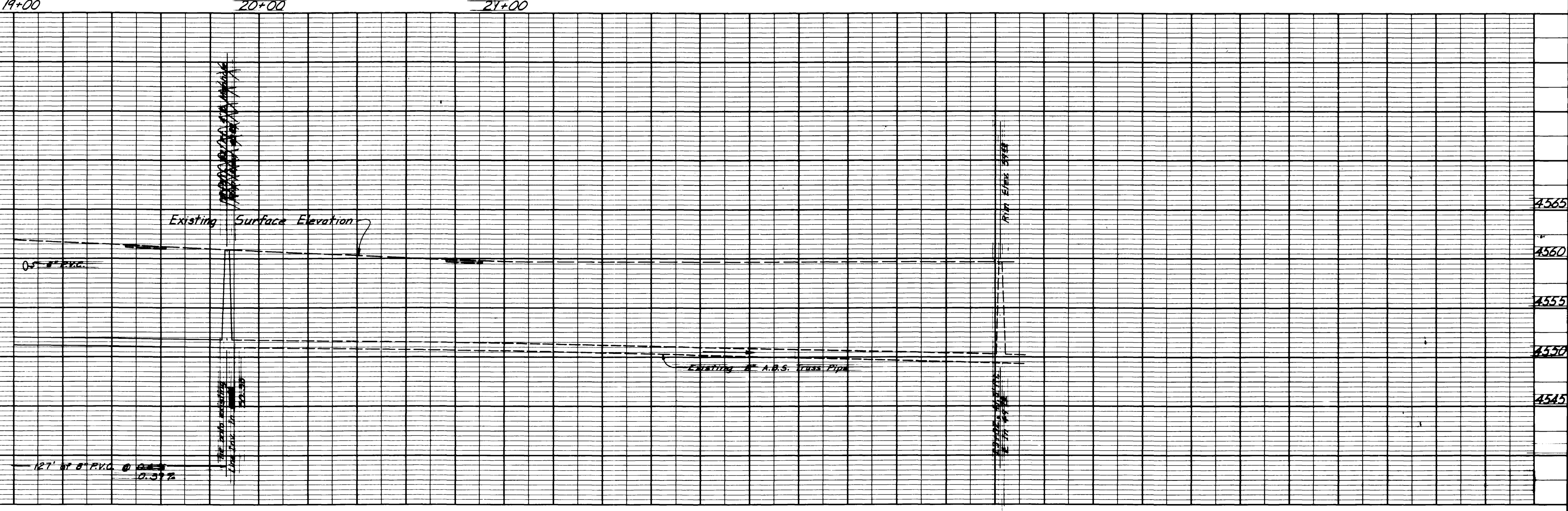
**DEPARTMENT OF PUBLIC WORKS AND UTILITIES**  
**ENGINEERING DIVISION**  
**CITY OF GRAND JUNCTION, COLORADO**

**25 ROAD SEWER EXTENSION - 1988**  
 WEST MESA COURT TO HIGHWAY 6 & 50

SHEET NO. 5  
 OF 11  
 FILE NO. \_\_\_\_\_



- GENERAL NOTES**
1. SHADING DESIGNATES ASPHALT REMOVAL AND REPLACEMENT. AREAS IN ROADWAY SHALL BE REPLACED WITH 12" AGGREGATE BASE COURSE CLASS 6 AND 4" OF HOT BITUMINOUS PAVEMENT AND AREAS IN DRIVEWAY SHALL BE REPLACED WITH 12" A.B.C. CLASS 6 AND 3" H.B.P.
  2. ALL AREAS WHERE ASPHALT IS NOT TO BE REMOVED AND REPLACED SHALL HAVE 12" OF A.B.C. CLASS 6 REPLACED ON THE SURFACE.
  3. P.V.C. SERVICE LINES SHALL BE LAID AT 2% GRADE (1/4" PER FOOT).
  4. MANHOLE RING ELEVATIONS SHALL BE FIELD ADJUSTED TO MATCH EXISTING SURFACE.



<b>DESCRIPTION</b>	<b>DATE</b>	<b>DRAWN BY</b> Chris Kadel	<b>DATE</b> 1-29-88
REVISION $\Delta$ As Built	Chn	5-23-89	
REVISION $\Delta$			
REVISION $\Delta$			
REVISION $\Delta$			
<b>SCALE</b>	<b>PLAN</b>	<b>PROFILE</b>	
	HORIZ. 1" = 20'	HORIZ. 1" = 20'	VERT. 1" = 5'
<b>DEPARTMENT OF PUBLIC WORKS AND UTILITIES</b>	<b>ENGINEERING DIVISION</b>	<b>CITY OF GRAND JUNCTION, COLORADO</b>	

**DEPARTMENT OF PUBLIC WORKS AND UTILITIES**  
**ENGINEERING DIVISION**  
**CITY OF GRAND JUNCTION, COLORADO**

**25 ROAD SEWER EXTENSION - 1988**  
 WEST MESA COURT TO HIGHWAY 6 & 50

<b>SHEET NO.</b> 6
<b>OF</b> 11
<b>FILE NO.</b>