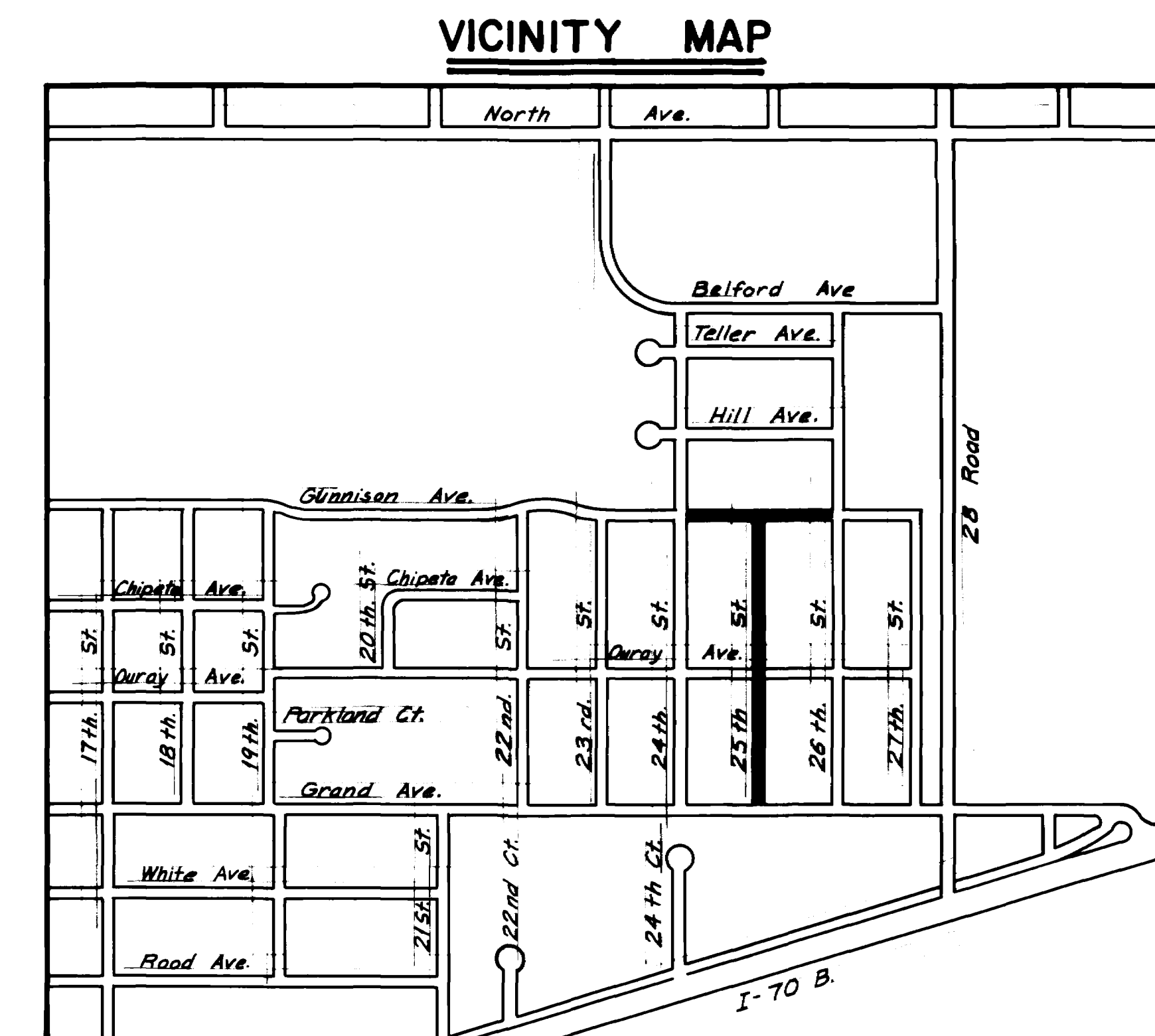


# ***GUNNISON AVENUE - 24 TH. ST. TO 26 TH. ST. AND 25TH. STREET - GRAND AVENUE TO GUNNISON AVENUE RECONSTRUCTION - 1988***

1. Cover Sheet
2. Drafting Standard & Abbreviations
3. Summary of Approximate Quantities / Bid Tabulation Sheet
- 4-7. Plan & Profile Sheets
8. Typical Cross Sections
9. Standard Pavement Details (ST-1)
10. Wheelchair Ramp Details (ST-1A)
11. Standard Sanitary Sewer Details (SS-1)
- 12-15. Traffic Control For Highway Construction CDOH S-614-50
16. Barricades, Drums, Concrete Barriers (Temp.) & Vertical Panels CDOH S-614-51



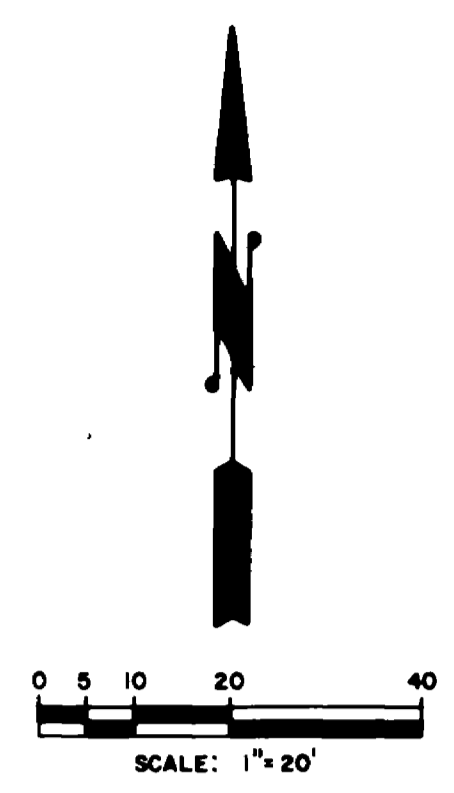
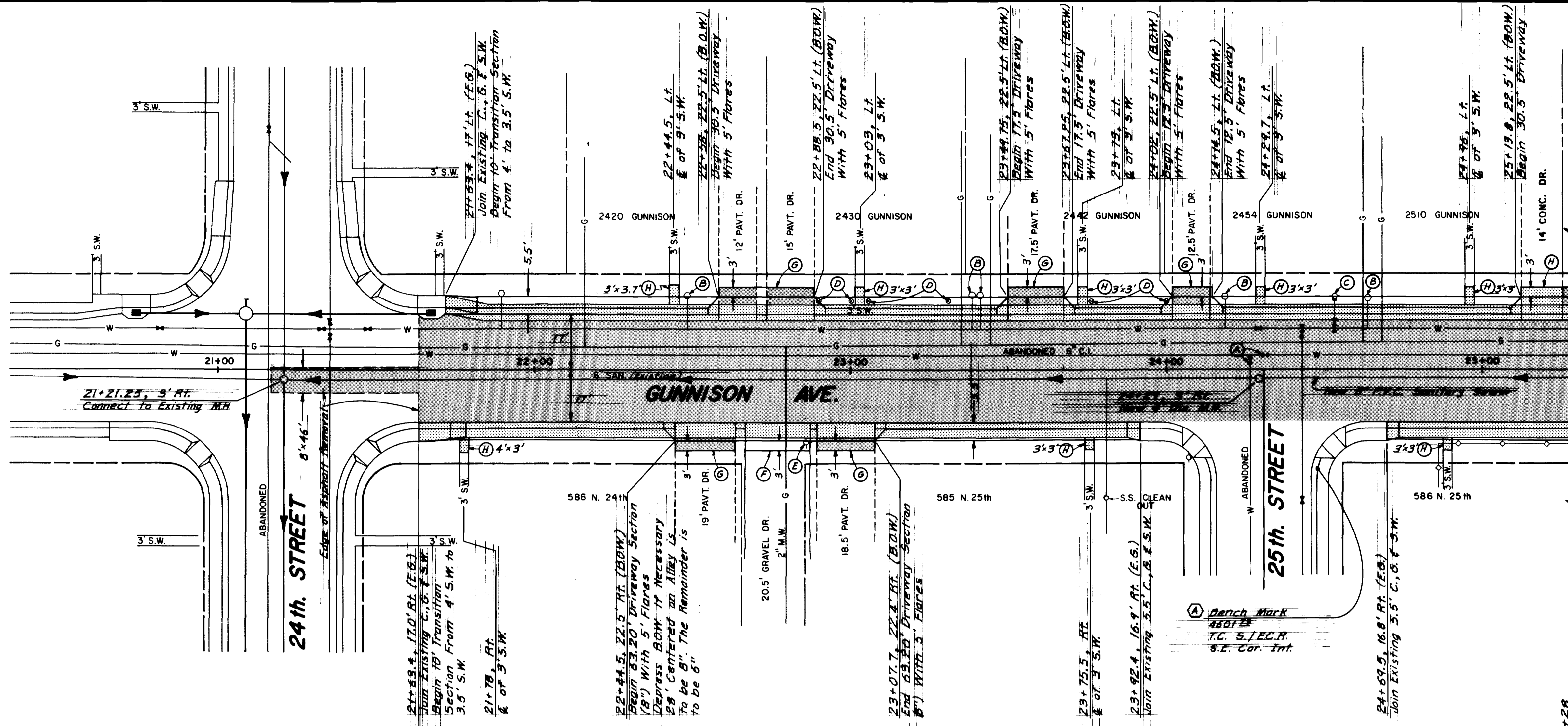
**CITY OF GRAND JUNCTION**  
**DEPARTMENT OF PUBLIC WORKS AND UTILITIES**

**ENGINEERING DIVISION**

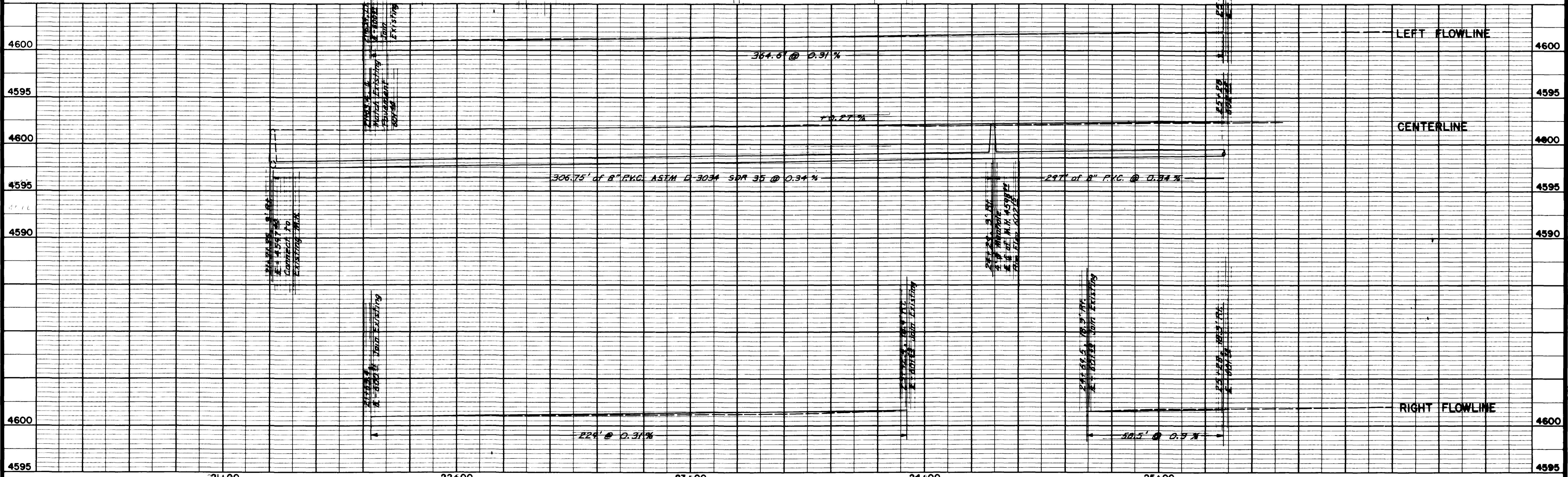


# SUMMARY OF APPROXIMATE QUANTITIES

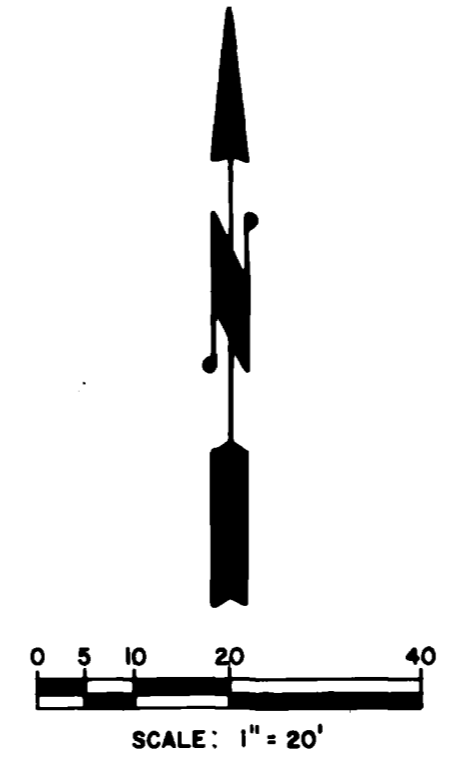
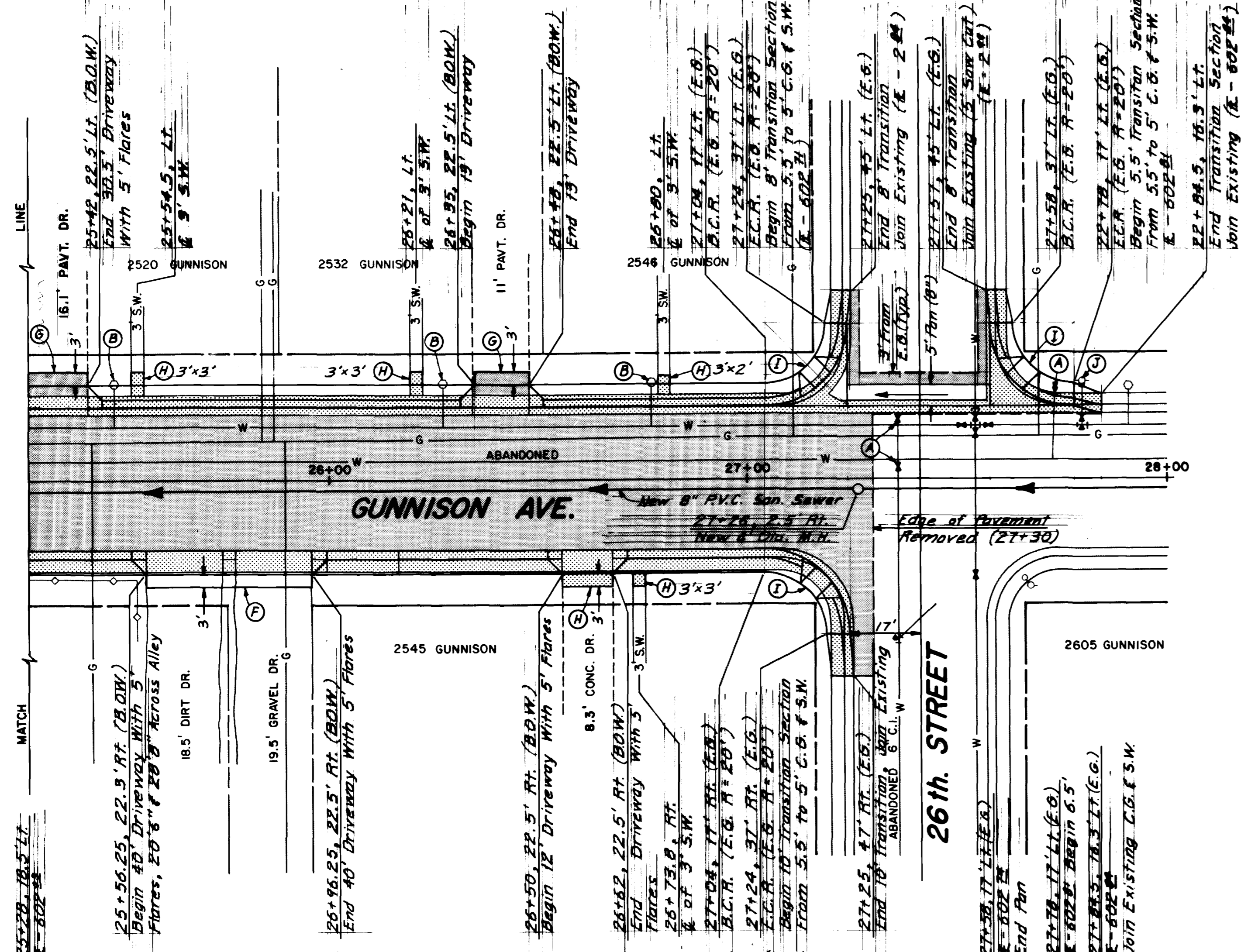
Item No.	Ref. No.	Contract Item	Unit	Quantity															Totals
GUNNISON AVENUE - 24TH STREET TO 26TH STREET 25TH STREET - GRAND AVENUE TO GUNNISON AVENUE RECONSTRUCTION 1988																			
<u>Gunnison Avenue - Street</u>																			
1.		Exploratory Excavation to verify locations and elevations of existing underground installations	Lump Sum	Lump Sum															
2.	202	Cut and Remove Pavement to a Neat Line	S.Y.	1870															
3.	202	Remove Asphalt Drive Ways	S.Y.	70															
4.	202	Remove 5.3' Wide Concrete Curb, Gutter and Sidewalk and Driveway	L.F.	1140															
5.	202	Saw Cut Asphalt and Concrete Driveways and Sidewalks (Private)	L.F.	3															
6.	202	Remove 3' Concrete Pan and Fillets at 26th & Gunnison Avenue	Lump Sum	Lump Sum															
7.	203	Unclassified Excavation (18" Deep)	S.Y.	3050															
8.	210	Adjust Manhole Rings to Grade	Each	2															
9.	210	Adjust Valve Boxes to Grade	Each	3															
10.	210	Remove and Reset Sprinkler Heads and Pipe	L.F.	90															
11.	212	Resode (Where Authorized)	S.Y.	200															
12.	304	Class 6 Aggregate Base Course (18" Thick) (Haul, Water and Compact)	S.Y.	3050															
13.	304	Class 6 Aggregate Base Course (12" Thick) (Haul, Water and Compact) in private driveways	S.Y.	304															
14.	304	Granular Stabilization Material Including Overexcavation	Tons	100															
15.	--	Ground Stabilization Fabric	S.Y.	3060															
16.	403	Hot Bituminous Pavement Grading E (3" Thick) (Haul, Asphalt and Compact) (2 Lifts)	S.Y.	2270															
17.	403	Driveway Patching Hot Bituminous Pavement Grading E (3" Thick) (Haul, Asphalt and Compact) Including 6" Aggregate Base Course	S.Y.	45															
18.	407	Prime Coat (MC-70)	Gal.	681															
19.	407	Tack Coat (CSS-1H)	Gal.	227															
20.	608-609	Monolithic Concrete Curb & Sidewalk (5.5' Wide)	L.F.	820															
21.	608-609	Monolithic Concrete Driveway Sections (5.5' Wide) (6" Thick)	S.Y.	135															
22.	608-609	Monolithic Concrete Driveway Sections (5.5' Wide) (8" Thick) at Alleys	S.Y.	336															
23.	608-609	Concrete Wheel Chair Ramps	Each	3															
24.	608-609	Concrete Sidewalk and Driveway Sections (4" Thick) with 6" Aggregate Base Course Class 6	S.Y.	27															
25.	609-609	5' Wide Concrete Valley Pan	L.F.	34															
26.	608-609	Concrete Fillet Section	S.Y.	21															
<u>Water</u>																			
27.	604	Connect to Existing Manhole Sta.	Lump Sum	Lump Sum															
28.	604	Furnish & Install 8" Dia. P.V.C. Sewer Pipe ASTM D 3034 SDR 35 Including Excavation and Backfill	L.F.	600															
29.	604	Furnish & Install 4" Dia. P.V.C. Sewer Pipe ASTM D 3034 SDR 35 Including Excavation & Backfill	L.F.	325															
30.	604	Furnish and Install 4" Sewer Tap Including Saddle & Fittings	Each	13															
31.	604	Furnish and Install 4' Dia. Manhole 5' Deep	Each	2															
32.	304	Granular Stabilization Material Including Overexcavation	Ton	120															
<u>25th Street Street</u>																			
33.	--	Exploratory Excavation to Verify Locations and Elevations of Existing Underground Installations	Lump Sum	Lump Sum															
34.	202	Cut and Remove Pavement to a Neat Line	S.Y.	3800															
35.	203	Unclassified Excavations (8" Deep)	S.Y.	3600															
36.	210	Adjust Manhole Rings to Grade	Each	3															
37.	210	Adjust Valve Box to Grade	Each	4															
38.	304	Class 6 Aggregate Base Course (18" Thick)	S.Y.	3600															
39.	304	Granular Stabilization Material Including Overexcavation	Tons	200															
40.	--	Ground Stabilization Fabric	S.Y.	3800															
41.	403	Hot Bituminous Pavement (3" Thick) (Haul, Asphalt and Compact) (2 Lifts)	S.Y.	3800															
42.	407	Prime Coat (M-70)	Gal.	1140															
43.	407	Tack Coat (CSS-1h)	Gal.	380															
<u>Sewer</u>																			
44.	604	Furnish and Install 8" P.V.C. Sewer Pipe (ASTM D 3034 SDR 35) Including Excavation and Backfill	L.F.	1030															
45.	604	Furnish and Install 4" P.V.C. Sewer Pipe (ASTM D 3034 SDR 35) Including Excavation and Backfill	L.F.	480															
46.	604	Furnish and Install Sewer Tap	Each	34															
47.	604	Furnish and Install Sewer Tap	Each	34															
48.	304	Granular Stabilization Material Including Overexcavation	Ton	130															
49.	--	Flowable Fill Under 5' Valley Pan at Grand Avenue	Lump Sum	Lump Sum															
50.	--	Mobilization	Lump Sum	Lump Sum															
51.	--	Traffic Control	Lump Sum	Lump Sum															
52.	--	Informational Newsletter (Approximately 100 Copies Required Per Week)	Weeks	10															
53.	--	Project Signs	Each	3															



- CONSTRUCTION NOTES**
1. It is The Contractors Responsibility To Locate And Verify Information About Existing Utilities Prior to Construction.
  2. The Contractor is to Repair Any Water, Sewer, or Gas Services Which He Damages. This Shall Be Considered Incidental To Construction.
  3. The Excavation Shall Be Backfilled at The End of Each Day or Shall Be Barricaded and Fenced off Each Night.
  4. Shading [diagonal lines] Designates Asphalt Removal And Replacement.
  5. Shading [cross-hatch] Designates Concrete Removal And Replacement.
  6. Location of Sewer Services Along Gunnison Ave. Will Have to Be Located as the New Sewer is installed. The 4\"/>

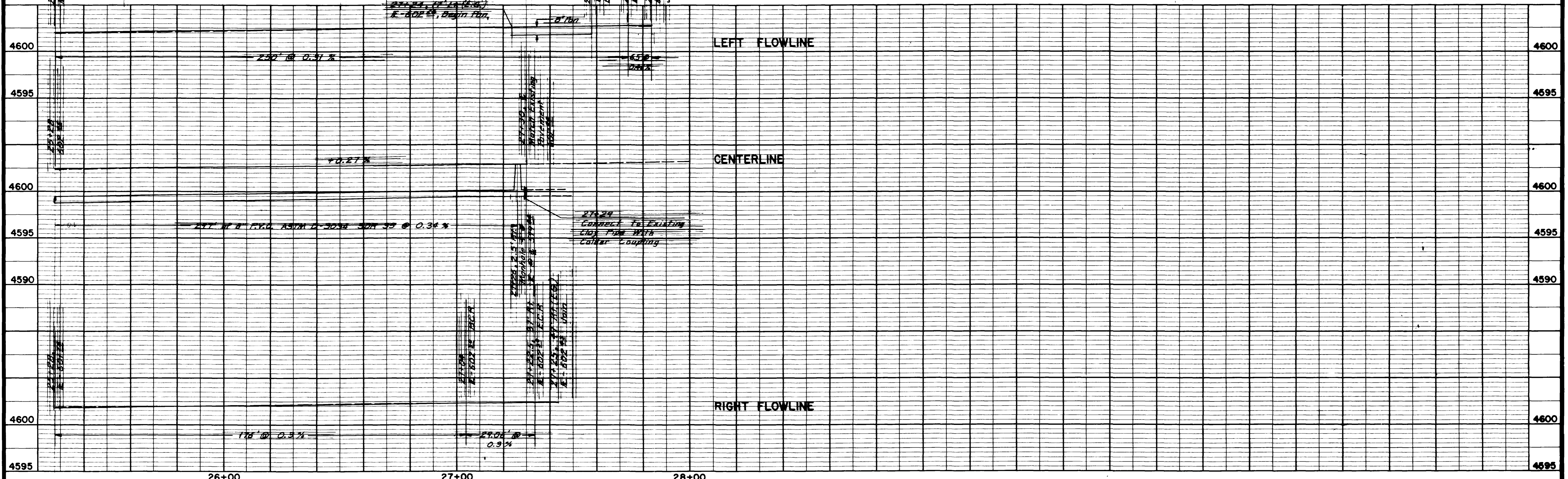


REVISION $\Delta$ REVISION $\Delta$ REVISION $\Delta$ REVISION $\Delta$	DESCRIPTION _____ DATE _____ DATE _____ DATE _____ DATE _____ PAGE _____	DRAWN BY CHRIS KADEL CHECKED BY _____ APPROVED BY _____ FIELD BOOK NO. _____	DATE 4-2-88 DATE _____ DATE _____ PAGE _____	SCALE PLAN HORIZ. 1"=20' PROFILE HORIZ. 1"=20' VERT. 1"=5'	<b>DEPARTMENT OF PUBLIC WORKS AND UTILITIES</b> <b>ENGINEERING DIVISION</b> <b>CITY OF GRAND JUNCTION, COLORADO</b>	<b>GUNNISON AVENUE RECONSTRUCTION</b> <b>24 th. ST. TO 26 th. ST.</b> <b>PLAN AND PROFILE SHEET</b>	SHEET NO. <u>4</u> OF <u>16</u> FILE NO. _____
--	---	---	---	---	---	---	--



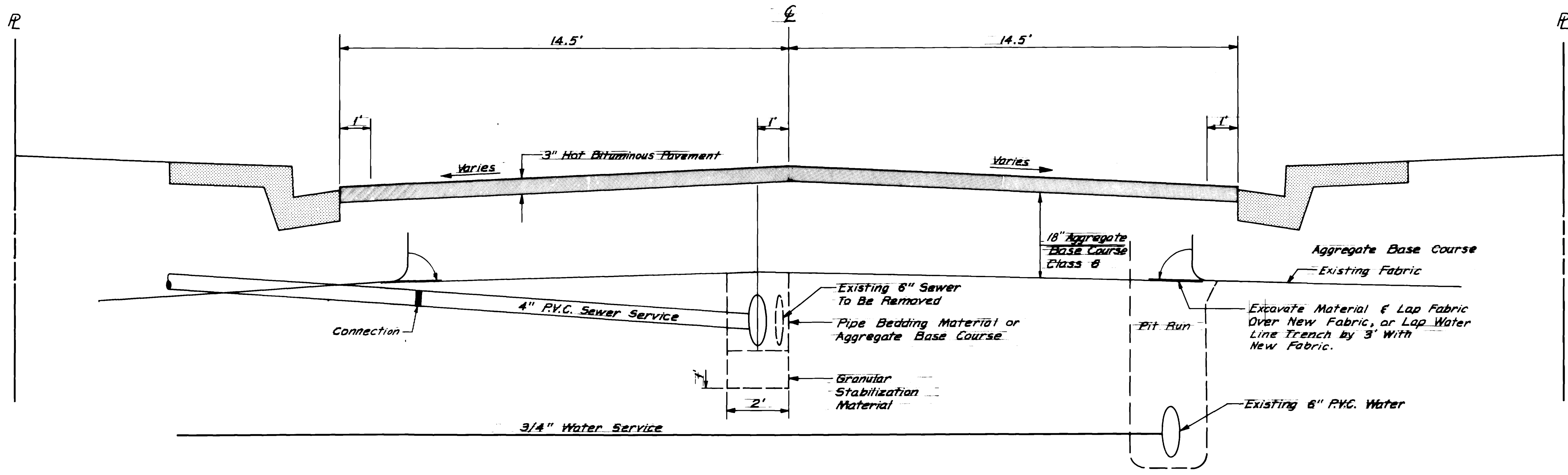
**CONSTRUCTION NOTES**

- Ⓐ Abandoned Valve
- Ⓑ Water Meters to be Relocated by City Crews Pits to be Relocated to 25' Lt.  
Sta. 22+48 - 2420 Gunnison Ave.  
Sta. 23+38 - 2430 Gunnison Ave.  
Sta. 23+40.5 - 2442 Gunnison Ave.  
Sta. 24+18 - 2454 Gunnison Ave.  
Sta. 24+63.5 - 2510 Gunnison Ave.  
Sta. 25+48.5 - 2520 Gunnison Ave.  
Sta. 26+27 - 2532 Gunnison Ave.  
Sta. 26+76.5 - 2546 Gunnison Ave.
- Ⓒ Fire Hydrant, Sta. 24+58, to be Relocated by City Crews New Location 24+56, 24' Lt.
- Ⓓ Sprinkler Heads to be Relocated. Sprinkler Heads to be 3" Behind New Sidewalk.  
Sta. 22+87.5, 21' Lt. to 22.75' Lt.  
Sta. 23+00.8, 21' Lt. to 22.75' Lt.  
Sta. 23+04.5, 21' Lt. to 22.75' Lt.  
Sta. 23+31, 21' Lt. to 22.75' Lt.  
Sta. 23+74, 21' Lt. to 22.75' Lt.  
Sta. 23+99.5, 21' Lt. to 22.75' Lt.
- Ⓔ Light Pole to be Moved by Public Service Co. Pole to be Relocated to Sta. 22+86, 24' Rt.
- Ⓕ 12" of Aggregate Base Course - Class 6 Graded to Match Existing Driveway and New Back of Walk.
- Ⓖ Saw Cut, Remove and Replace with 12" of Aggregate Base Course - Class 6 and 3" of Hot Bituminous Pavement Grading E. Grade to Match New Back of Walk and Existing Driveway.
- Ⓜ Saw Cut, Remove and Replace with 6" Aggregate Base Course and 4" Concrete Section. Grade to Match Existing Driveway and New Back of Walk.
- Ⓝ Standard 5' Wheel Chair Ramp, with 4' Transitions, Centered on Curb Return.
- Ⓞ Fire Hydrant, Sta. 27+76.5, 21.5' Lt., to be Relocated to 27+76.5, 24' Lt. by City Crews

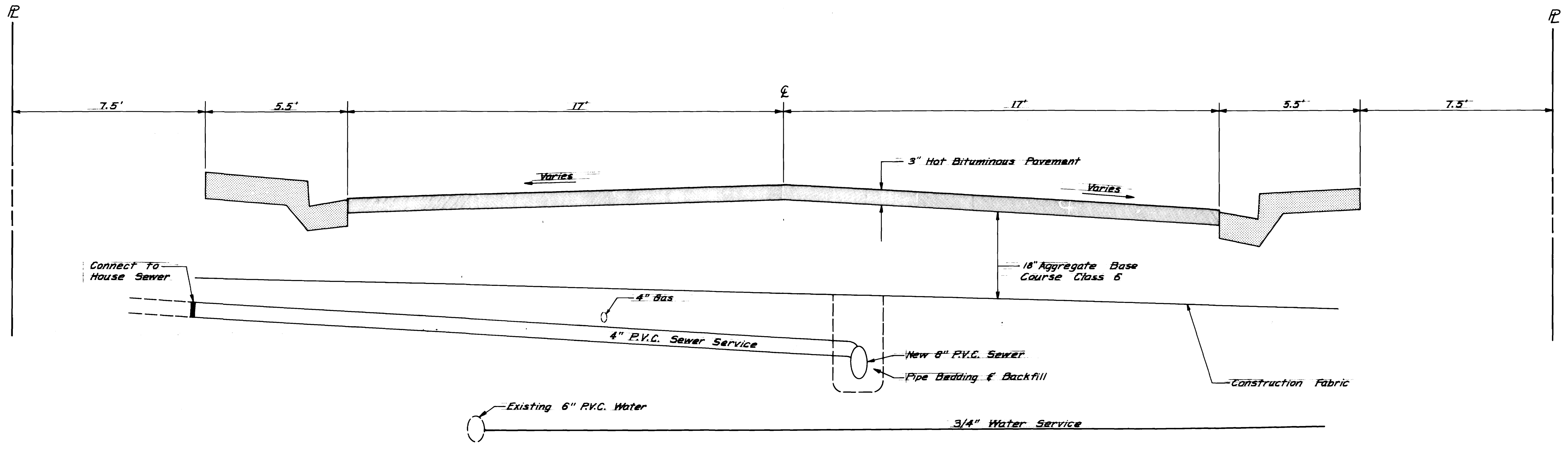


REVISION Δ _____ REVISION Δ _____ REVISION Δ _____ REVISION Δ _____	DESCRIPTION _____ DATE _____ DATE _____ DATE _____ PAGE _____	DRAWN BY CHRIS KADEL CHECKED BY _____ APPROVED BY _____ FIELD BOOK NO. _____	DATE 4-2-88 DATE _____ DATE _____ PAGE _____	SCALE PLAN HORIZ. 1" = 20' PROFILE VERT. 1" = 5'	<b>DEPARTMENT OF PUBLIC WORKS AND UTILITIES</b> <b>ENGINEERING DIVISION</b> <b>CITY OF GRAND JUNCTION, COLORADO</b>	<b>GUNNISON AVENUE RECONSTRUCTION</b> <b>24 th. ST. TO 26 th. ST.</b> <b>PLAN AND PROFILE SHEET</b>	SHEET NO. <u>5</u> OF <u>16</u> FILE NO. _____
--	---	---	---	--	---	---	--





**25 TH. STREET**  
NO SCALE



**GUNNISON AVENUE**  
NO SCALE

REVISION	DESCRIPTION	DATE	DRAWN BY	DATE	SCALE
REVISION A			CHRIS KADEL	4-14-88	PLAN NO SCALE
REVISION B					PROFILE NO SCALE
REVISION C					VERT. NO SCALE

**DEPARTMENT OF PUBLIC WORKS AND UTILITIES**  
**ENGINEERING DIVISION**  
**CITY OF GRAND JUNCTION, COLORADO**

**25 TH. STREET & GUNNISON AVENUE**  
**RECONSTRUCTION**  
**TYPICAL CROSS SECTIONS**

SHEET NO.	8
OF	16
FILE NO.	

# SCHEDULE OF TRAFFIC CONTROL DEVICES

Sign Code	Signs	Dimensions	Panel Size		Other Devices	
			A	B	Item	Quant.
48W20-1	Road Construction Ahead	48" x 48"		2	Barricade, Type 3M-A	6
36W20-1	Road Construction Ahead	36" x 36"	3		Barricade, Type 1 With Light (F)	24
36W20-7a	Flagger Symbol	36" x 36"	4		Vertical Panel	75
36W20-50	Be Prepared To Stop	36" x 36"	4		Vertical Panel With Light (F)	10
24R4-7a	Keep Right	24" x 30"	6		Vertical Panel With Light (SB)	16
30W1-3L	Reverse Curve Left	30" x 30"	1		Traffic Cones 28"	100
30W1-3R	Reverse Curve Right	30" x 30"	1			
30W8-3	Pavement Ends	30" x 30"	3			
48W20-3	Road Closed Ahead	48" x 48"		2		
48W20-2	Detour Ahead	48" x 48"		2		
36W20-3	Road Closed Ahead	36" x 36"	1			
48R11-2	Road Closed	48" x 30"		3		
48M4-10L	Detour Arrow	48" x 18"	1			
48M4-10R	Detour Arrow	48" x 18"	1			
24M4-9L	Detour Advisory	24" x 30"	2			
24M4-9R	Detour Advisory	24" x 30"	2			
48W20-5	Right Lane Closed Ahead	48" x 48"		2		
48W20-5	Left Lane Closed Ahead	48" x 48"		2		
48W4-2R	Right Lane Transition	48" x 48"		2		
48W4-2L	Left Lane Transition	48" x 48"		2		
48W1-6	Large Arrow	48" x 24"	2			
36W8-1	Bump	36" x 36"	2			
Special	Patterson Road Closed/ 24 1/2 Road To 25 Road/ Use Industrial Boulevard	48" x 30"		3		
Total			33	20		

REVISION $\Delta$	DESCRIPTION	DATE	DRAWN BY	DATE	SCALE	<b>DEPARTMENT OF PUBLIC WORKS AND UTILITIES</b> <b>ENGINEERING DIVISION</b> <b>CITY OF GRAND JUNCTION, COLORADO</b>	SHEET NO. _____
REVISION $\Delta$			CHECKED BY	DATE	PLAN		OF _____
REVISION $\Delta$			APPROVED BY	DATE	PROFILE		FILE NO. _____
REVISION $\Delta$			FIELD BOOK NO.	PAGE	HORIZ. _____		