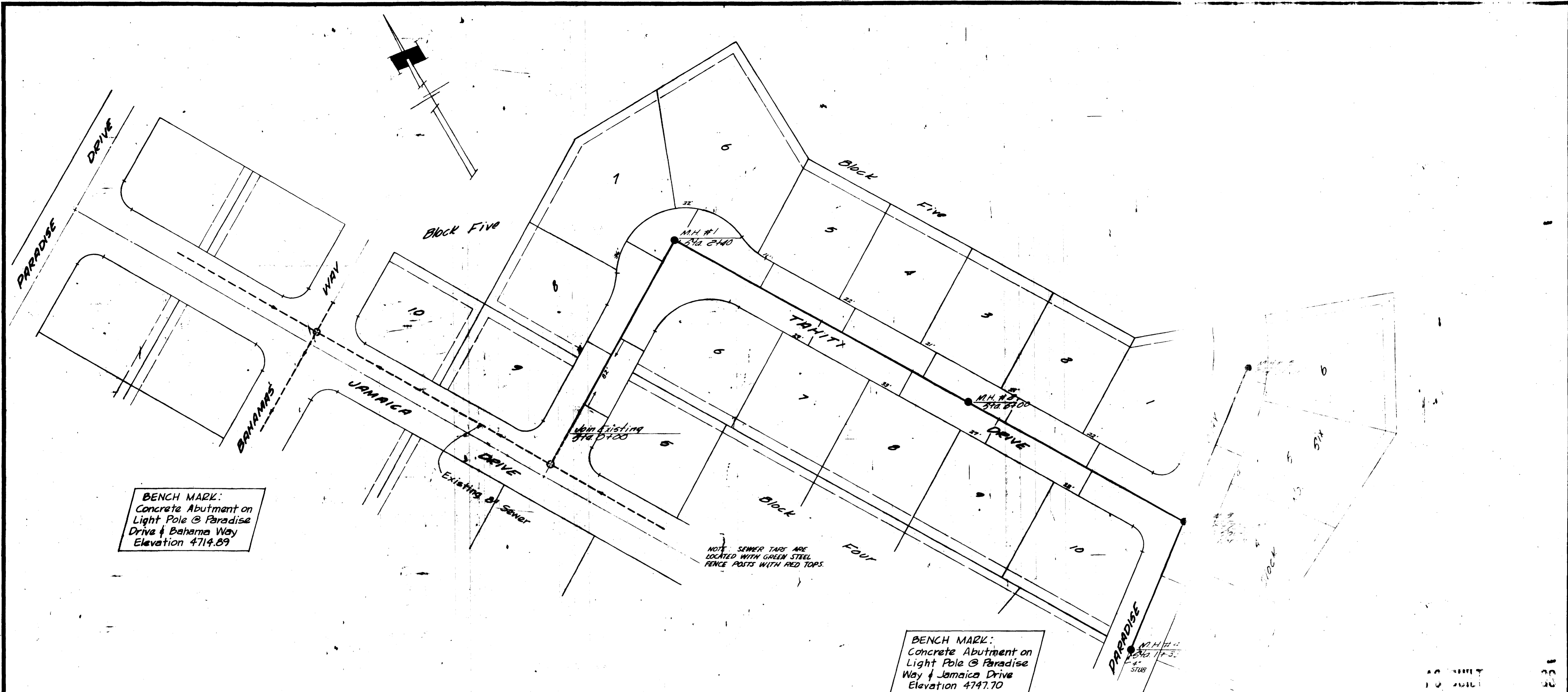


AS BUILT DRAWING

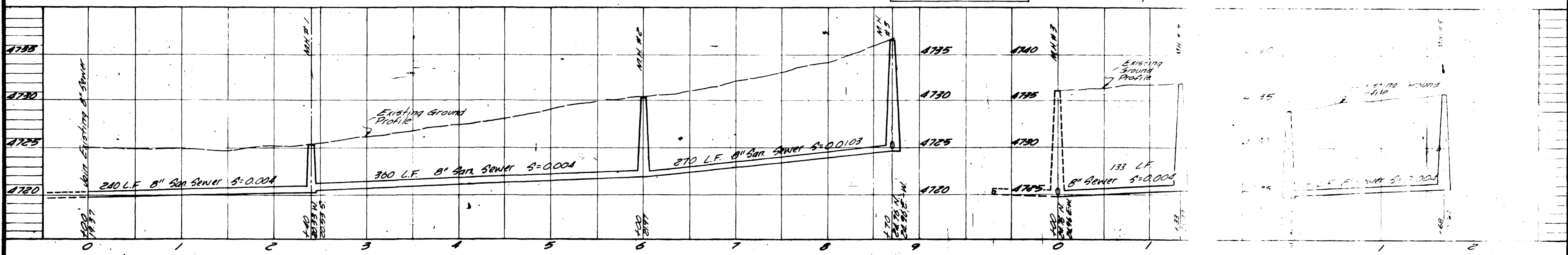
REVISIONS BY: G.L.S. DATE: 10-7-75 DESCR: "As Built" BY: DATE: DESCR: BY: DATE: DESCR:		DATE: December 1971 SCALE: 1"=50' Horiz. DRAWN: T.A.L. CHECKED: B.W.B. APPROVED: B.W.B.	PROJECT NO. 712-617-032	NELSON-HALEY-PATTERSON AND QUIRK ENGINEERING CONSULTANTS Brand Junction and Greeley Colorado	PARADISE HILLS SUBDIV Filing No 2	SANITARY SEWER PLAN and PROFILE	SHEET 1
---	--	---	----------------------------	--	--------------------------------------	------------------------------------	------------



BENCH MARK:  
Concrete Abutment on  
Light Pole @ Paradise  
Drive & Bahama Way  
Elevation 4714.89

BENCH MARK:  
Concrete Abutment on  
Light Pole @ Paradise  
Way & Jamaica Drive  
Elevation 4747.70

NOTE: SEWER TABS ARE  
LOCATED WITH GREEN STEEL  
FENCE POSTS WITH RED TOPS.



REVISIONS BY: T.A.L. DATE: 2/19/79 BY: B.M. DATE: 4-12-78 BY: _____ DATE: _____	DATE: 5/21/78 SCALE: 1" = 50' VERT. 1" = 50' HORIZ.	DRAWN: T.A.L. CHECKED: B.M. APPROVED: B.P.S.	PROJECT NO. 71-E-GUT-012	NELSON - HALEY - PATTERSON AND QUIRK ENGINEERING CONSULTANTS GREELEY & GRAND JUNCTION COLORADO	PARADISE HILLS SUBDIVIS. FILING No. 2	SANITARY SEWER ~ PLAN & PROFILE SHEET 1
--	---	--	-----------------------------	---	--	--