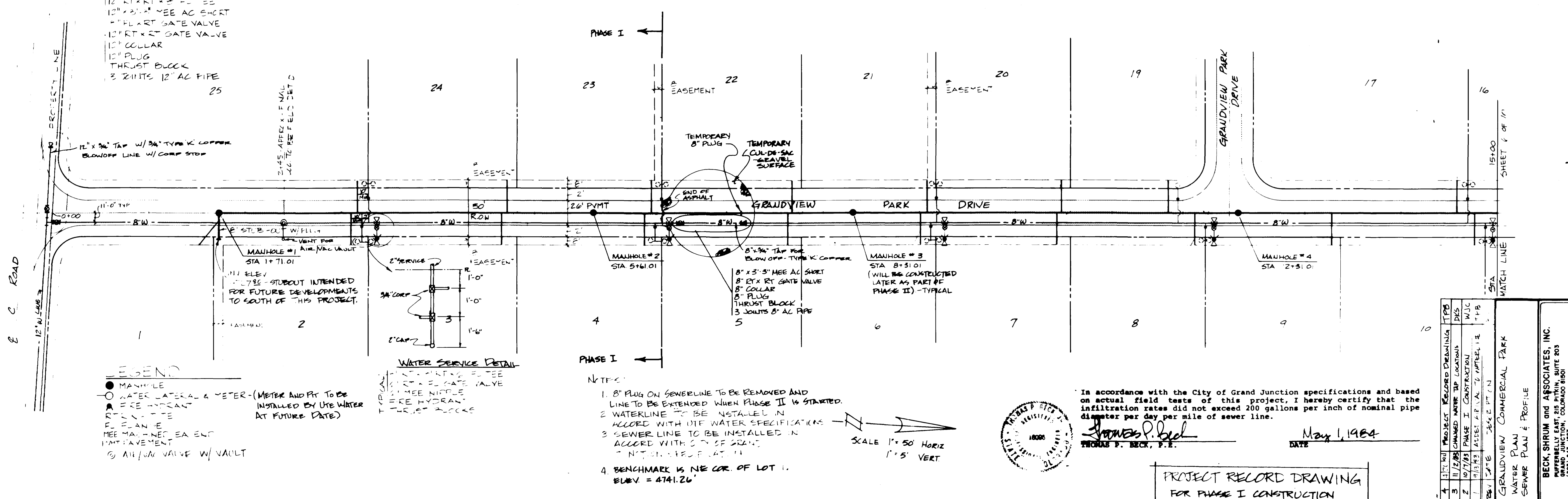
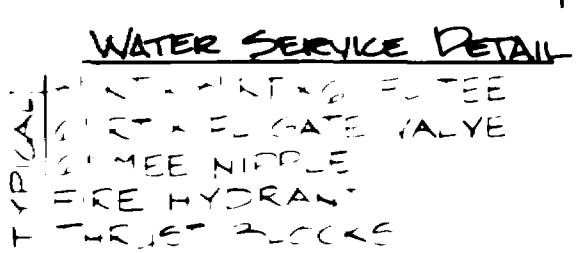


12" RT X RT 8' FL TEE
 12" X 3" MEE AC SHORT
 8" RT X RT GATE VALVE
 12" RT X RT GATE VALVE
 12" COLLAR
 12" PLUG
 THRUST BLOCK
 3 JOINTS 12" AC PIPE



LEGEND

- MANHOLE
- WATER LATERAL & METER - (METER AND FIT TO BE INSTALLED BY UTE WATER AT FUTURE DATE)
- ▲ FIRE HYDRANT
- TYPICAL
- ▭ FL PLAN
- ▭ MEE MACHINED EA ENT
- ▭ PAVEMENT
- AIR/VA VALVE W/ VAULT



- NOTES**
1. 8" PLUG ON SEWERLINE TO BE REMOVED AND LINE TO BE EXTENDED WHEN PHASE II IS STARTED.
 2. WATERLINE TO BE INSTALLED IN ACCORD WITH UTE WATER SPECIFICATIONS.
 3. SEWER LINE TO BE INSTALLED IN ACCORD WITH CITY OF GRAND JUNCTION SPECIFICATIONS.
 4. BENCHMARK IS NE COR. OF LOT 1. ELEV. = 4741.26'

In accordance with the City of Grand Junction specifications and based on actual field tests of this project, I hereby certify that the infiltration rates did not exceed 200 gallons per inch of nominal pipe diameter per day per mile of sewer line.

Thomas P. Beck
 THOMAS P. BECK, P.E.
 DATE: May 1, 1984

PROJECT RECORD DRAWING
 FOR PHASE I CONSTRUCTION

NO.	DATE	PROJECT RECORD DRAWING	TPD
1	10/7/83	PHASE I CONSTRUCTION	DIS
2	10/7/83	PHASE I CONSTRUCTION	WJC
3	10/7/83	PHASE I CONSTRUCTION	THB
4	10/7/83	PHASE I CONSTRUCTION	THB

REVISIONS

PROJECT: GRANDVIEW COMMERCIAL PARK
 WATER PLAN
 SEWER PLAN & PROFILE

BECK, SHRUM and ASSOCIATES, INC.
 PUFFERBELL EAST, 215 PITKIN, SUITE 203
 GRAND JUNCTION, COLORADO 81501
 (303) 243-1827

