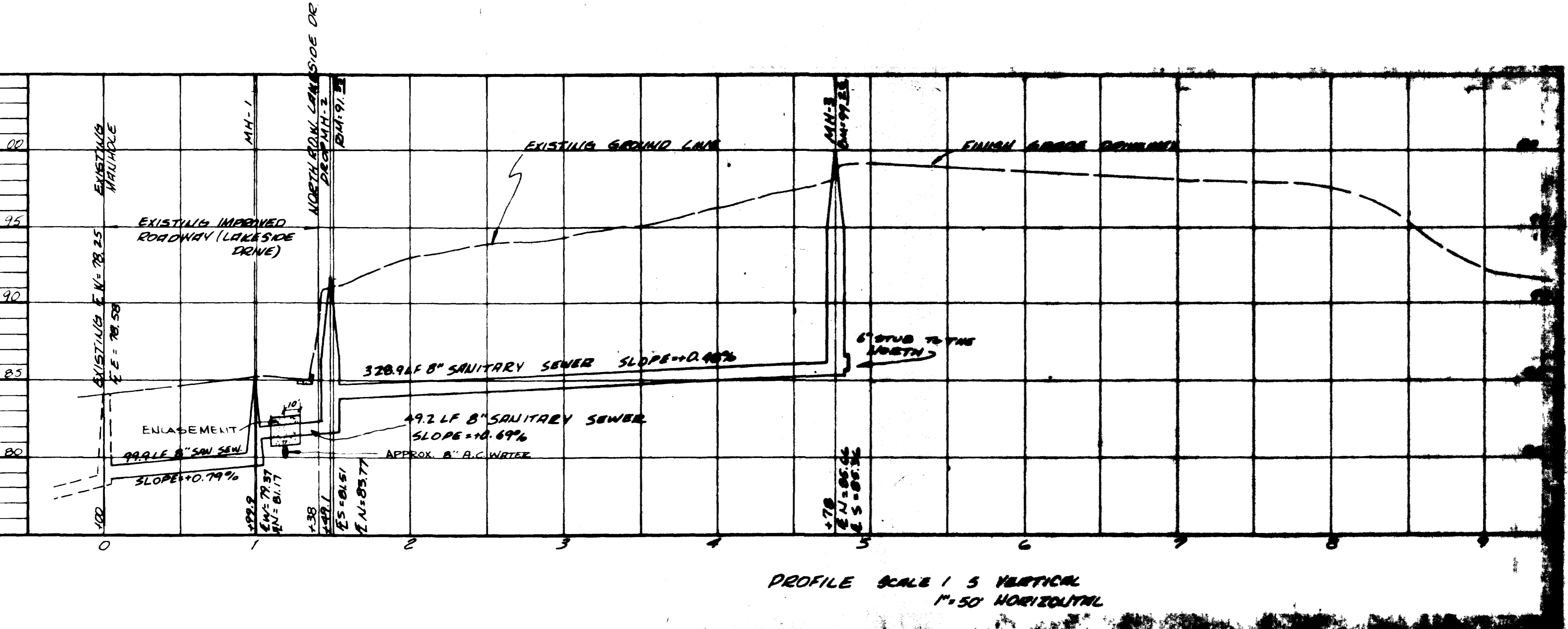
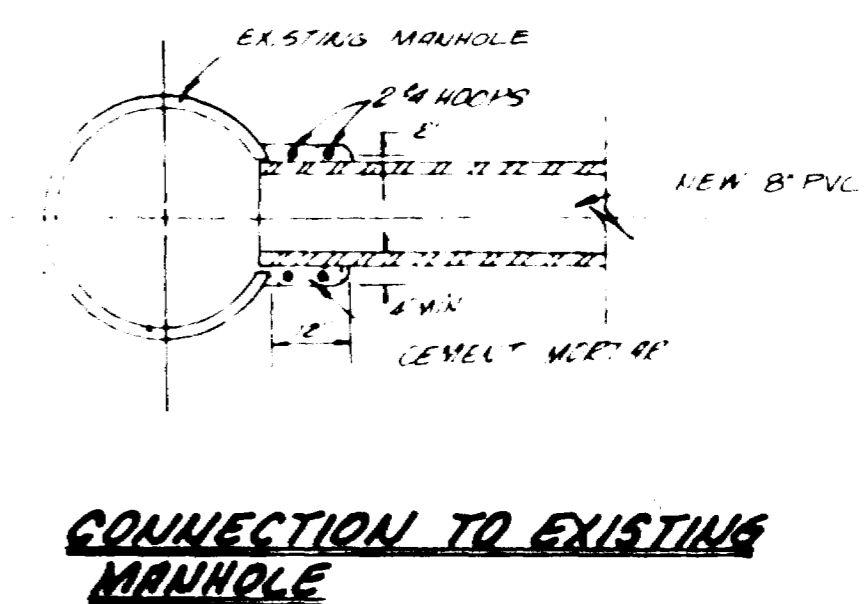
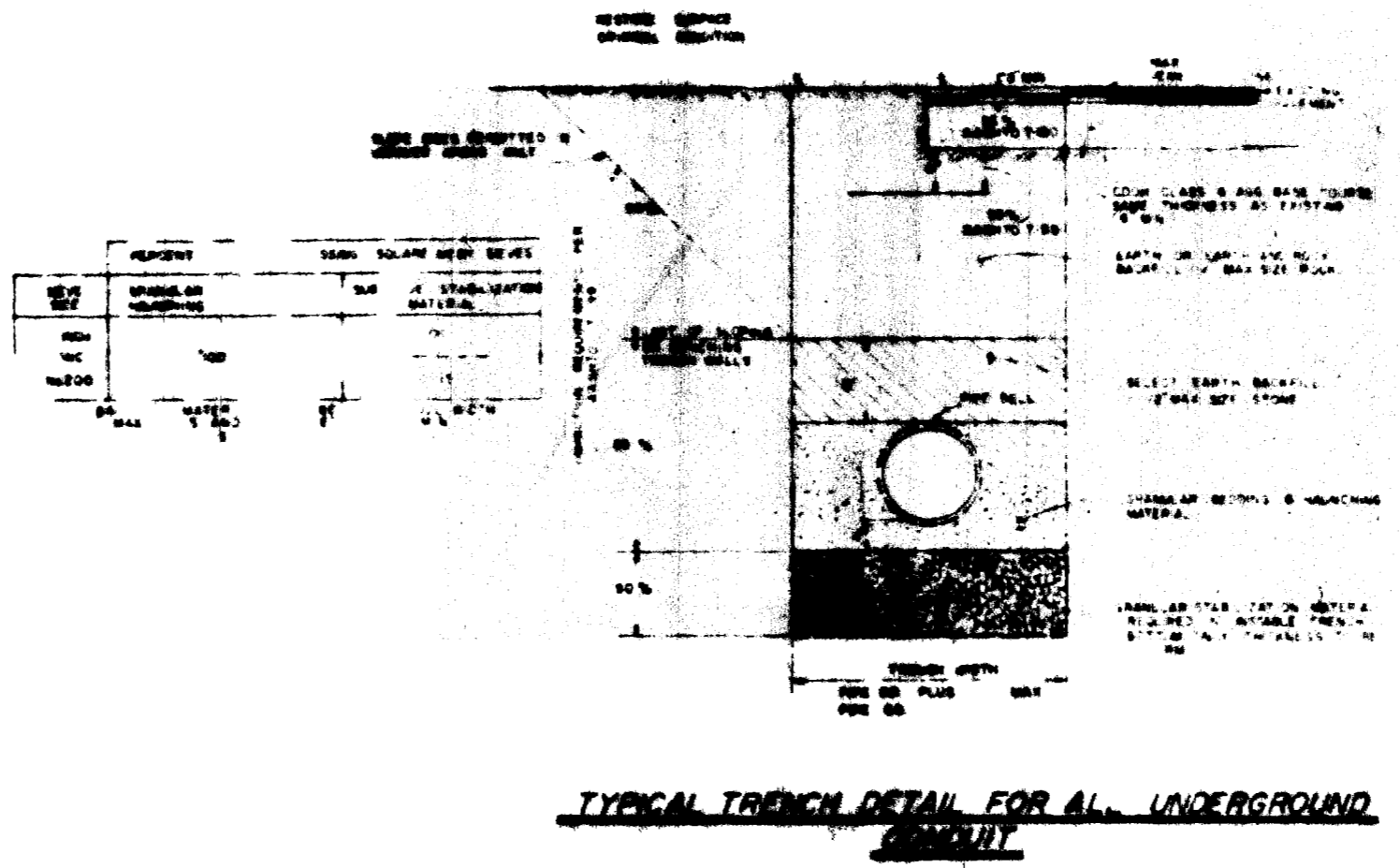
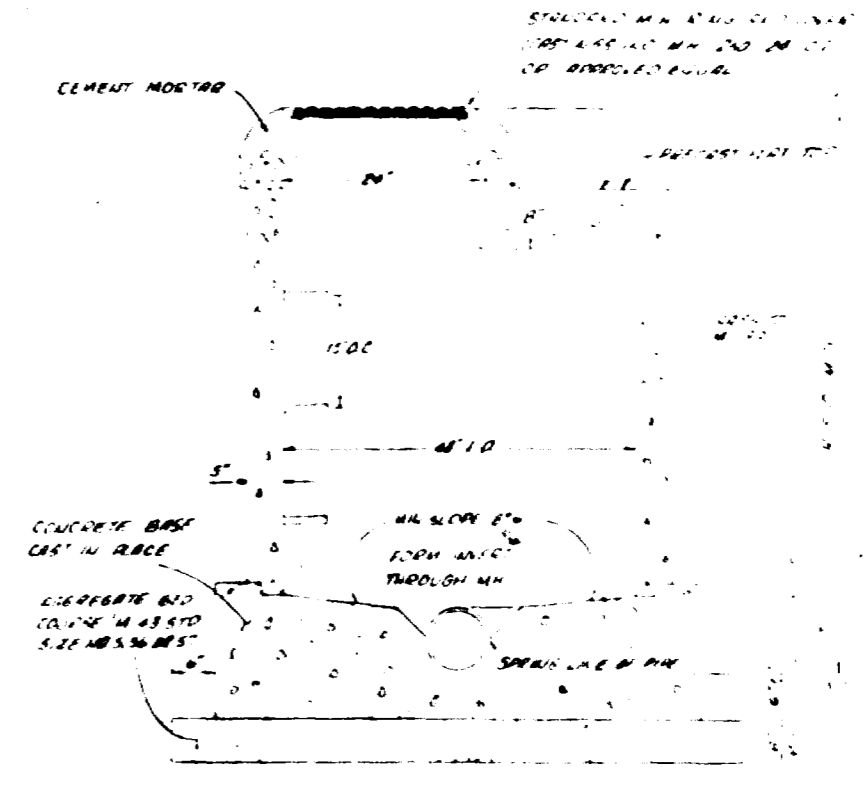
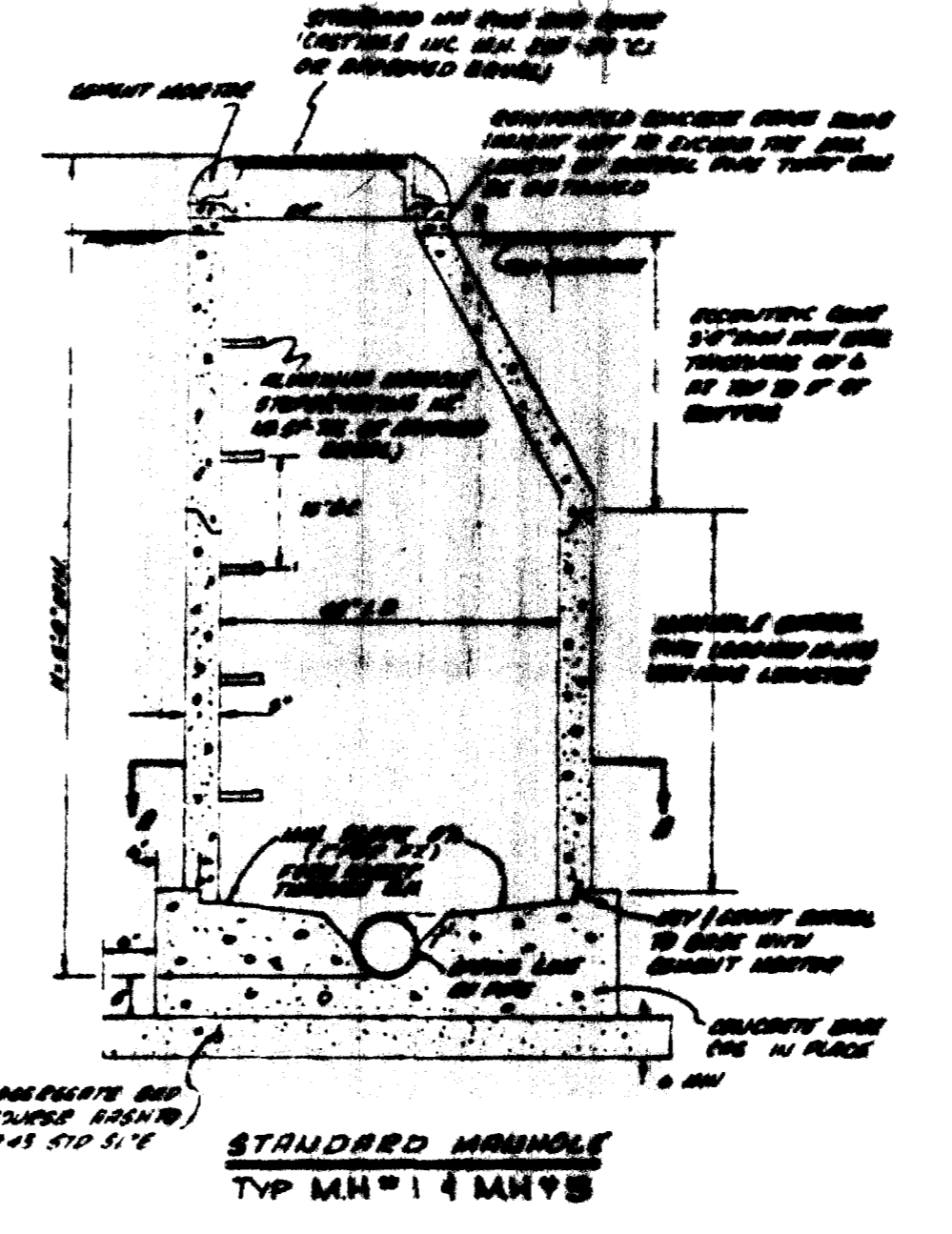


NOTE: EXISTING UTILITY LOCATIONS ARE BASED ON RECORDS. ALL UTILITIES MUST BE FIELD LOCATED BY THE CONTRACTOR BEFORE CONSTRUCTION. ALL STREET PAVEMENT AND CURB, GUTTER AND SIDEWALK ON LAKESIDE DRIVE MUST BE REPLACED IN KIND. A LICENSED CURB, GUTTER AND SIDEWALK CONTRACTOR MUST DO THE CONCRETE WORK, AND A PERMIT MUST BE OBTAINED FROM THE CITY ENGINEER.



GENERAL NOTES

- 1 THE CONTRACTOR SHALL BE RESPONSIBLE FOR LOCATING EXISTING IMPROVEMENTS AND PROTECTING THE INTEGRITY OF THE SAME.
- 2 THE CONTRACTOR SHALL SET THE TOP OF THE ECCENTRIC CONE AT TOP OF SUBGRADE (MANHOLES #3, #4 & #5). THE CONTRACTOR SHALL SET THE RIM TO GRADE AS DIRECTED AT MANHOLES #1 & #2.
- 3 ALL CONSTRUCTION SHALL BE IN ACCORDANCE WITH CITY OF GRAND JUNCTION SPECIFICATIONS FOR CONSTRUCTION OF WATERLINES, SANITARY SEWERS, STORM DRAINAGE AND IRRIGATION SYSTEM.
- 4 ALL CONSTRUCTION SHALL CONFORM TO CITY OF GRAND JUNCTION STANDARD DRAWING SS-1 AND CITY OF GRAND JUNCTION GENERAL CONTRACT CONDITIONS FOR PUBLIC WORKS AND UTILITIES CONSTRUCTION GC 37 GC-50 AND GC 65.

MATERIAL QUANTITIES

- 901 LF 8" SANITARY SEWER
- 2 STANDARD MANHOLES
- 1 SHALLOW MANHOLE
- 2 DROP MANHOLE
- 129 LF PAVEMENT REPLACEMENT

NOTE: This is to certify that the system infiltration does not exceed 200 gallons per inch diameter per mile of length per day.

APPROVED: GRAND JUNCTION CITY ENGINEER