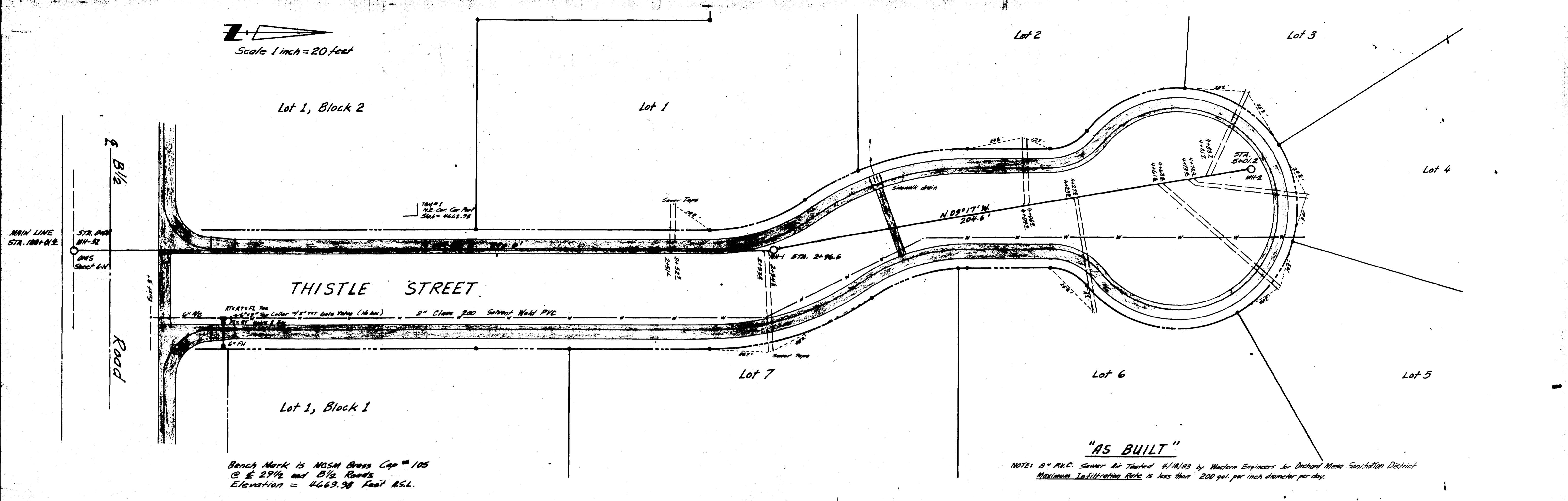
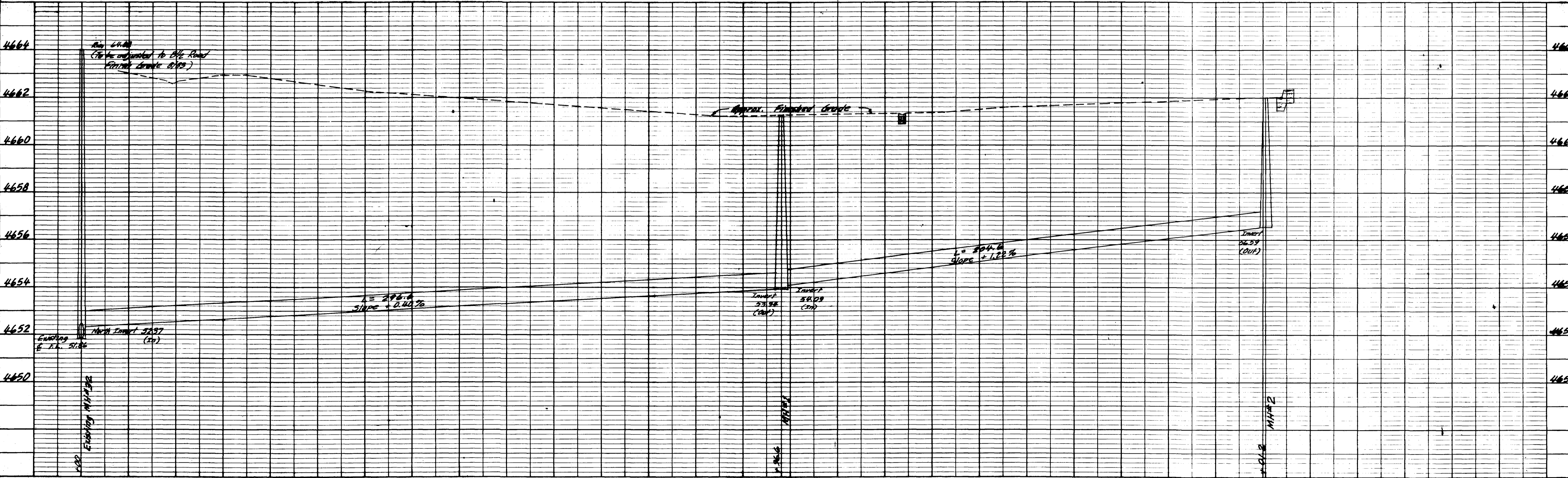


Scale 1 inch = 20 feet



Bench Mark is NCSM Brass Cap # 105
 @ E 29 1/2 and B 1/2 Roads
 Elevation = 4669.98 Feet A.S.L.

"AS BUILT"
 NOTES: 8" P.V.C. Sewer Air Tested 4/10/83 by Western Engineers for Orchard Mesa Sanitation District.
 Maximum Infiltration Rate is less than 200 gal. per inch diameter per day.



DRAWN BY M.W. ELDRIDGE	<table border="1"> <thead> <tr> <th colspan="4">REVISIONS</th> </tr> <tr> <th>NO.</th> <th>DATE</th> <th>REVISIONS</th> <th>BY</th> </tr> </thead> <tbody> <tr><td> </td><td> </td><td> </td><td> </td></tr> <tr><td> </td><td> </td><td> </td><td> </td></tr> <tr><td> </td><td> </td><td> </td><td> </td></tr> </tbody> </table>	REVISIONS				NO.	DATE	REVISIONS	BY													DESIGNED BY Gingery Associates Inc.	<p>M.A.P., INC. MAPPING - PLANNING - SURVEYING P. O. Box 49108 • 3038 I-70 Business Loop Grand Junction, CO 81504 • Phone (303) 434-5804</p>	DATE DRAWN August, 1983	SCALE HORIZ 1 INCH = 20 FEET VERT 1 INCH = 2 FEET	<p>"AS BUILT" UTILITY PLAN FOR REPLAT of LINCOLN ORCHARD MESA SUBDIVISION - THISTLE STREET -</p>	PROJECT NUMBER 8317
		REVISIONS																									
NO.	DATE	REVISIONS	BY																								
SURVEY DATE APRIL - JULY, 1983	SHEET NUMBER 1 OF 1																										