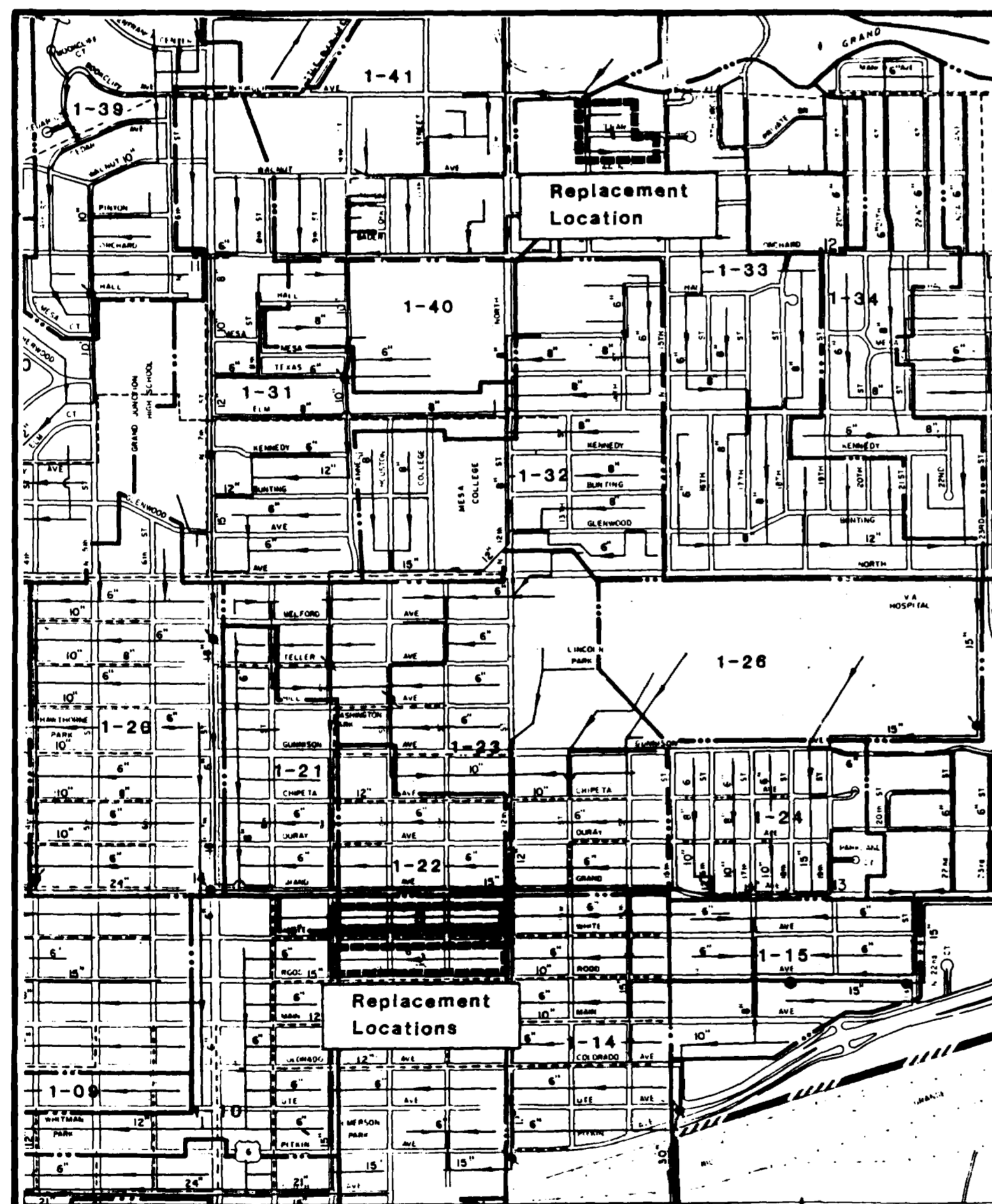


CONSTRUCTION PLANS FOR SEWER LINE REPLACEMENT - 1988 CITY OF GRAND JUNCTION Department of Public Works and Utilities



VICINITY MAP
SCALE: 1" = 1000'

INDEX OF SHEETS

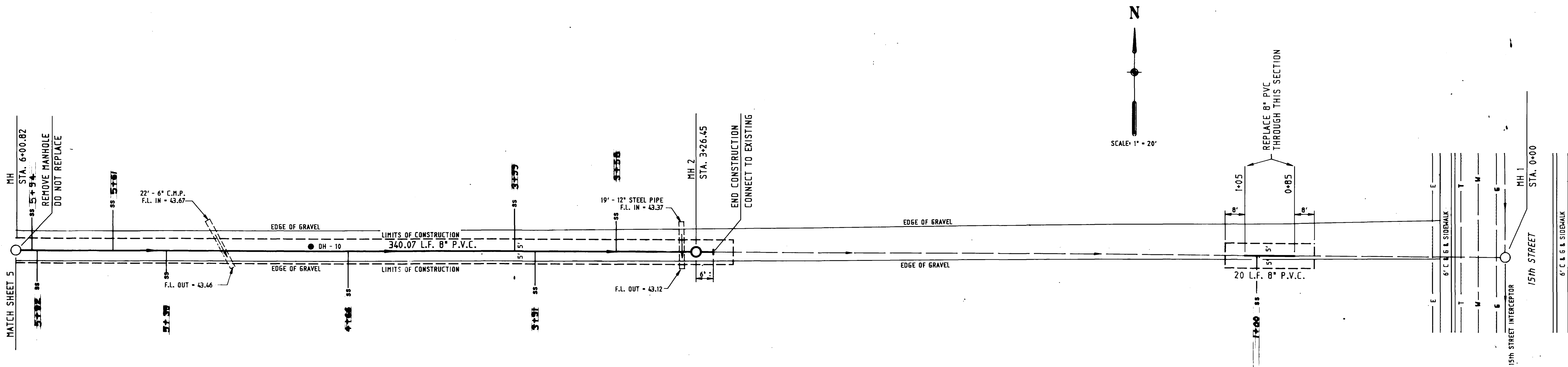
SHEET NO.	DESCRIPTION
1.	TITLE SHEET
2. - 4.	PLAN & PROFILE - 13th STREET NORTH
5. - 7.	PLAN & PROFILE - 9th STREET TO 12th STREET - ALLEY BETWEEN WHITE AVENUE AND ROOD AVENUE
8. - 10.	PLAN & PROFILE - 9th STREET TO 12th STREET - ALLEY BETWEEN GRAND AVENUE AND WHITE AVENUE
11. - 12.	INTERSECTION DETAILS

**CONSTRUCTION DRAWINGS
OF RECORD**



5-26-89

Prepared By:
BANNER ASSOCIATES, INC.
CONSULTING ENGINEERS
GRAND JUNCTION, COLORADO



CONSTRUCTION NOTES:

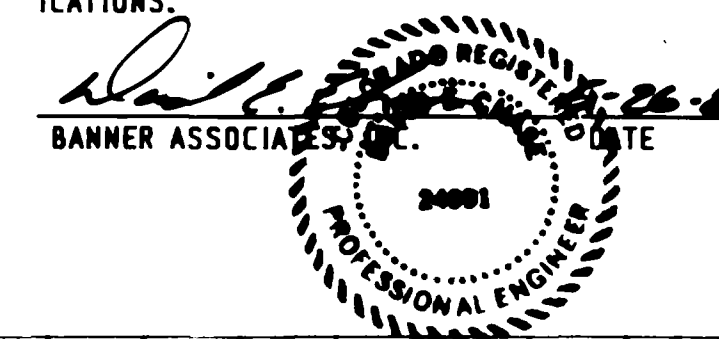
1. REPLACEMENT SECTION FROM STA. : 3+14 TO STA. : 6+47
 - a. BACKFILL - NATIVE MATERIAL
 - b. SURFACING - 10" CLASS 6 AGGREGATE BASE COURSE

OR

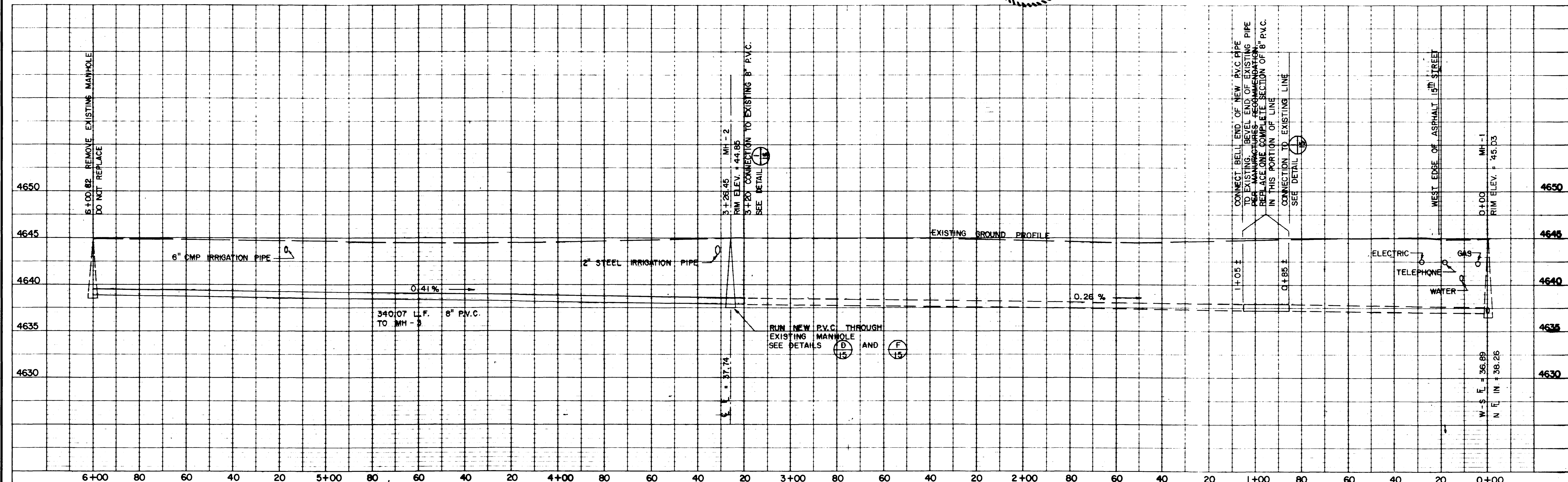
 - a. BACKFILL - PIT RUN AGGREGATE
 - b. SURFACING - 6" CLASS 6 AGGREGATE BASE COURSE
2. REPLACEMENT SECTION FROM STA. : 0+85 TO STA. : 1+05 SAME AS ABOVE

INFILTRATION CERTIFICATE

THIS IS TO CERTIFY THAT BANNER ASSOCIATES, INC. REVIEWED THE SANITARY SEWER LINE REPLACEMENT - 1988 AND FOUND THAT THE GROUND WATER INFILTRATION DID NOT EXCEED THE MAXIMUM ALLOWABLE RATE AS DETAILED IN THE CITY OF GRAND JUNCTION CONSTRUCTION SPECIFICATIONS.



CONSTRUCTION DRAWING OF RECORD



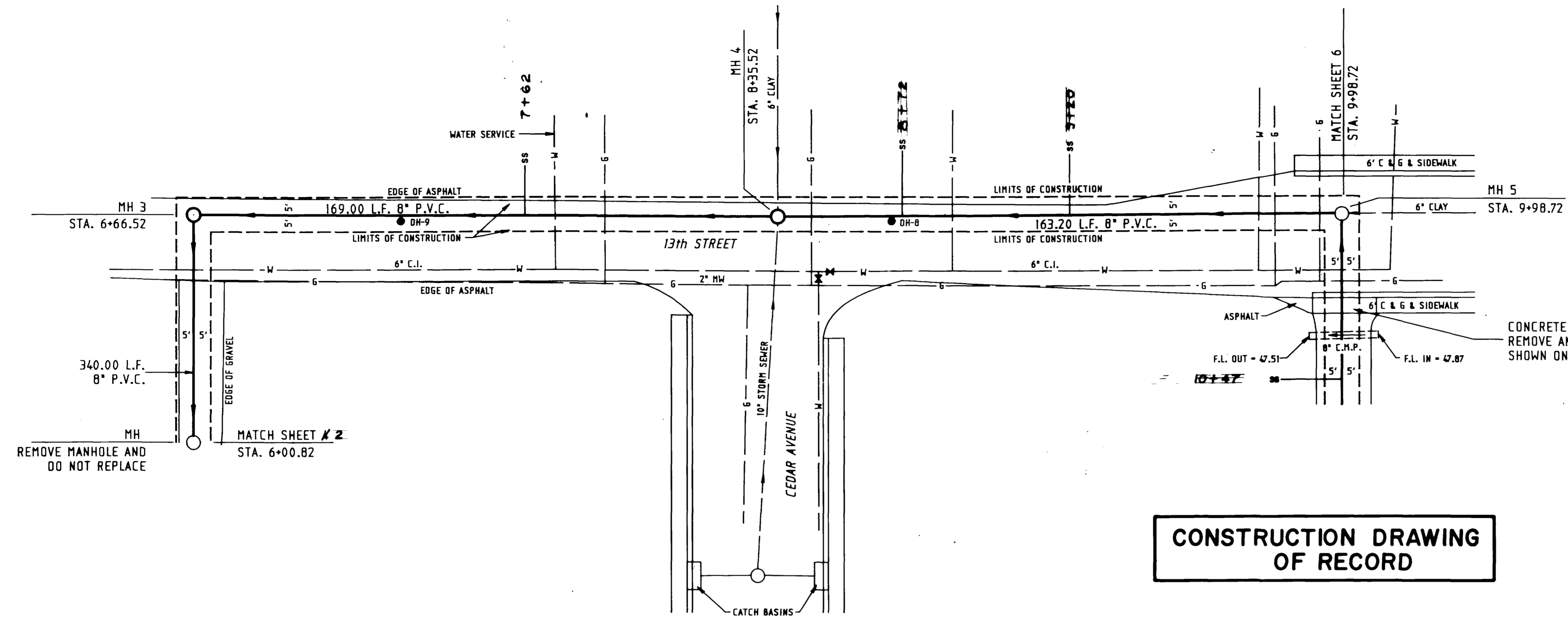
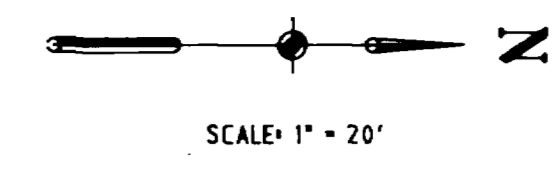
Drawn By: _____ APPROVED: _____
 DATE: _____ FOR: _____
 Checked By: JWC REVIEWED: *Kenneth B. Batty*
 DATE: 6-15-88 FOR BANNER ASSOCIATES, INC.

BANNER

REVISION	DATE	DESCRIPTION	MADE	APPR.

CITY OF GRAND JUNCTION DEPARTMENT OF PUBLIC WORKS AND UTILITIES
SEWER LINE REPLACEMENT - 1988
 13th STREET NORTH - WALNUT AVENUE TO BOOKCLIFF AVENUE

Scale: 1" = 20' HORIZ. 1" = 5' VERT.
 Date: JUNE, 1988
 Project No. 8117-04
 Sheet No. 2 of 12

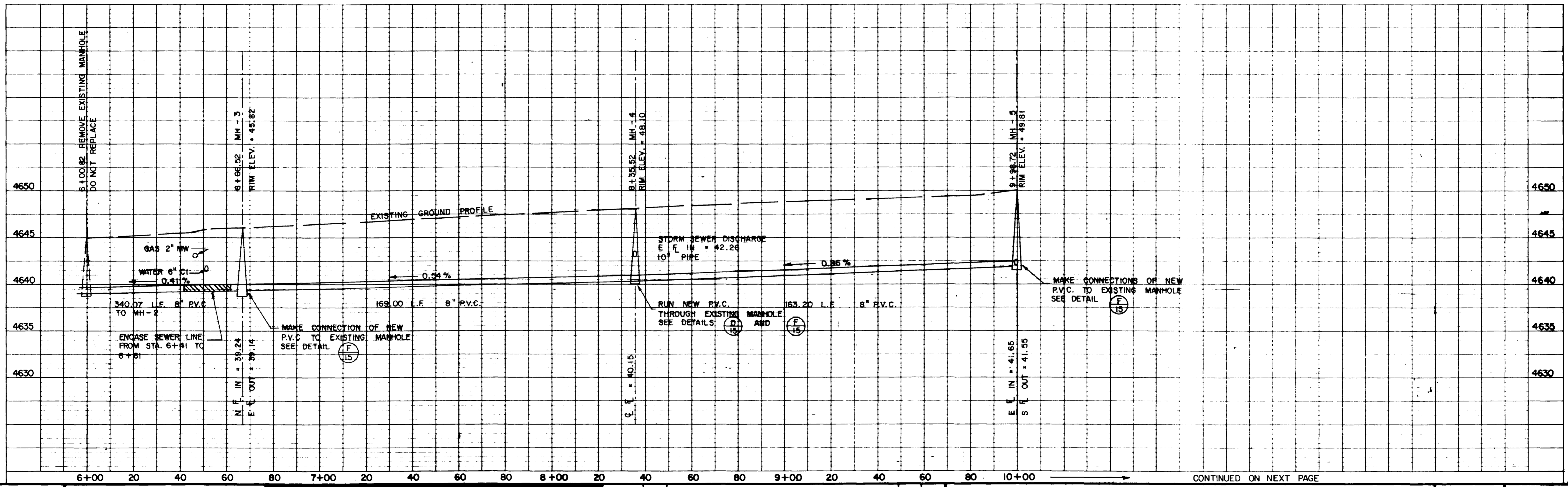


INFILTRATION CERTIFICATE
 THIS IS TO CERTIFY THAT BANNER ASSOCIATES, INC. REVIEWED THE SANITARY SEWER LINE REPLACEMENT - 1988 AND FOUND THAT THE GROUND WATER INFILTRATION DID NOT EXCEED THE MAXIMUM ALLOWABLE RATE AS DETAILED IN THE CITY OF GRAND JUNCTION CONSTRUCTION SPECIFICATIONS.



- CONSTRUCTION NOTES:**
1. REPLACEMENT SECTION FROM STA. : 6+47 TO STA. : 10+21
 - a. BACKFILL - PIT RUN AGGREGATE
 - b. BASE COURSE - 8" CLASS 6 AGGREGATE BASE COURSE
 - c. SURFACING - 3" GRADING & HOT BITUMINOUS PAVEMENT

CONSTRUCTION DRAWING OF RECORD



CONTINUED ON NEXT PAGE

Drawn By: _____
 Checked By: JWC
 APPROVED: _____
 DATE: 6-15-88 FOR BANNER ASSOCIATES, INC.

BANNER

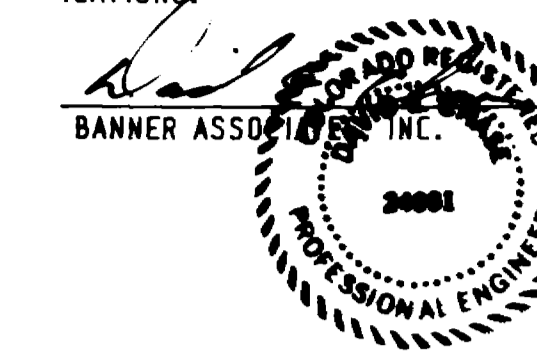
REVISION	DATE	DESCRIPTION	MADE	APPR.

CITY OF GRAND JUNCTION
 DEPARTMENT OF PUBLIC WORKS AND UTILITIES
SEWER LINE REPLACEMENT - 1988
 13th STREET NORTH - WALNUT AVENUE TO BOOKCLIFF AVENUE

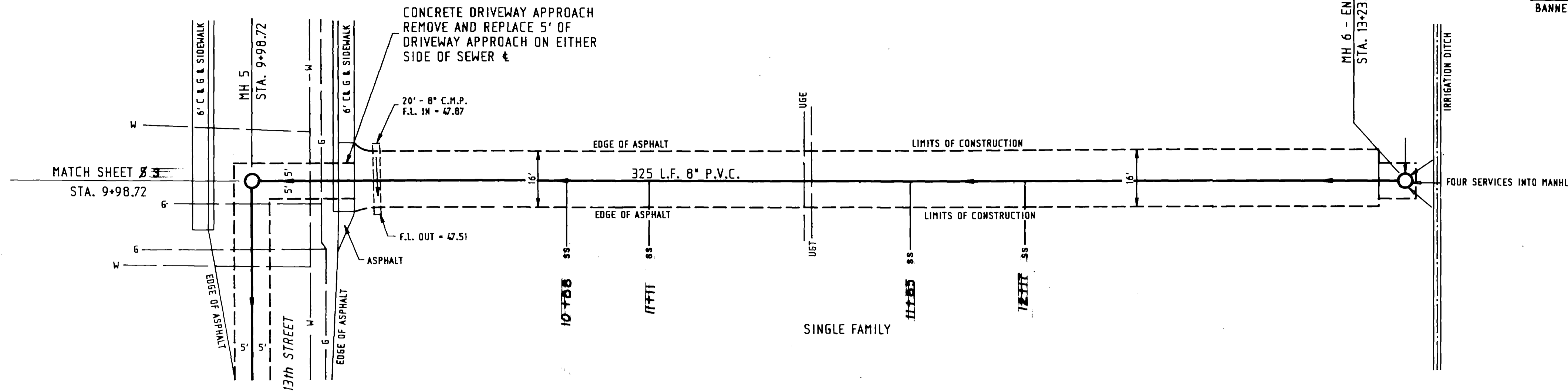
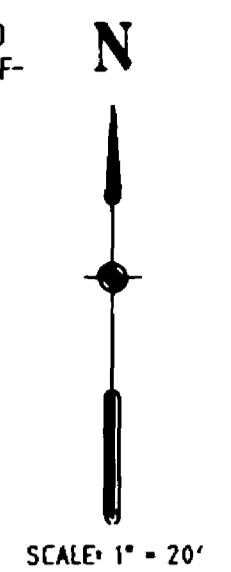
Scale: 1" = 20' HORIZ.
 1" = 5' VERT.
 Date: JUNE, 1988
 Project No. 8117-04
 Sheet No. 3 of 12

INFILTRATION CERTIFICATE

THIS IS TO CERTIFY THAT BANNER ASSOCIATES, INC. REVIEWED THE SANITARY SEWER LINE REPLACEMENT - 1988 AND FOUND THAT THE GROUND WATER INFILTRATION DID NOT EXCEED THE MAXIMUM ALLOWABLE RATE AS DETAILED IN THE CITY OF GRAND JUNCTION CONSTRUCTION SPECIFICATIONS.



5-26-89
DATE

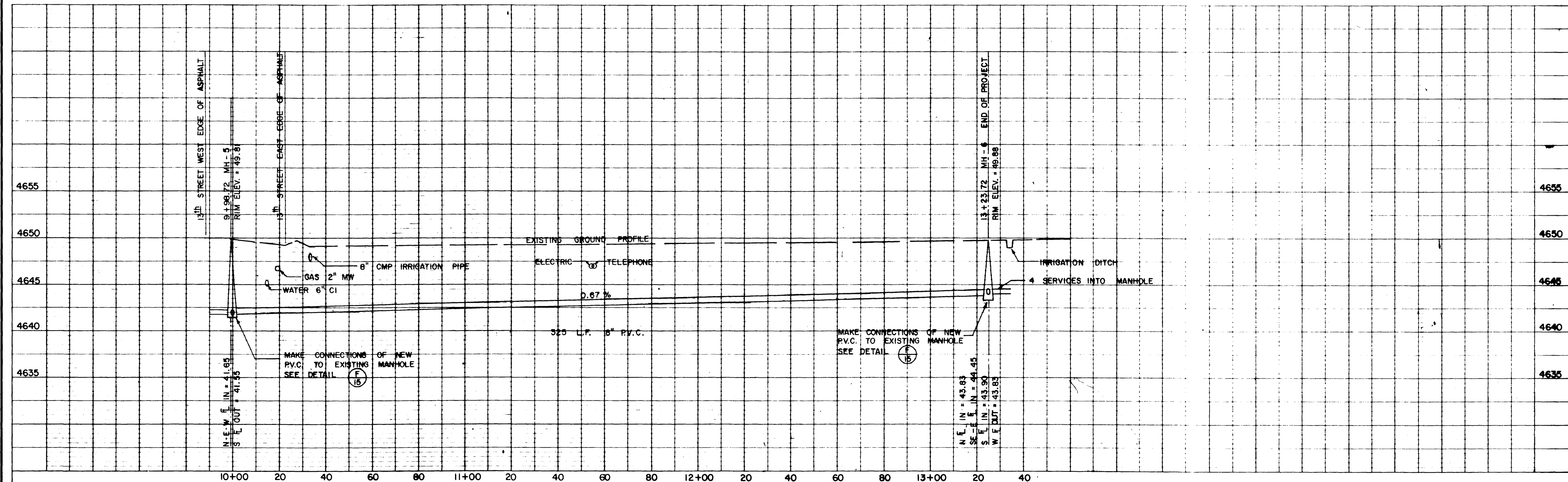


CONSTRUCTION DRAWING OF RECORD

CONSTRUCTION NOTES:

1. REPLACEMENT SECTION FROM STA. 10+27.50 TO STA. 13+17.0
 - a. BACKFILL - PIT RUN AGGREGATE
 - b. BASE COURSE - 6" CLASS 6 AGGREGATE BASE COURSE
 - c. SURFACING - 3" GRADING & HOT BITUMINOUS PAVEMENT

CEDAR AVENUE



Drawn By: _____
 APPROVED: _____ FOR _____
 DATE: _____

Checked By: *JWC*
 JWC
 REVIEWED: *Kenneth H. ...*
 DATE: *6-15-88* FOR BANNER ASSOCIATES, INC.

BANNER

REVISION	DATE	DESCRIPTION	MADE	APPR.

CITY OF GRAND JUNCTION DEPARTMENT OF PUBLIC WORKS AND UTILITIES

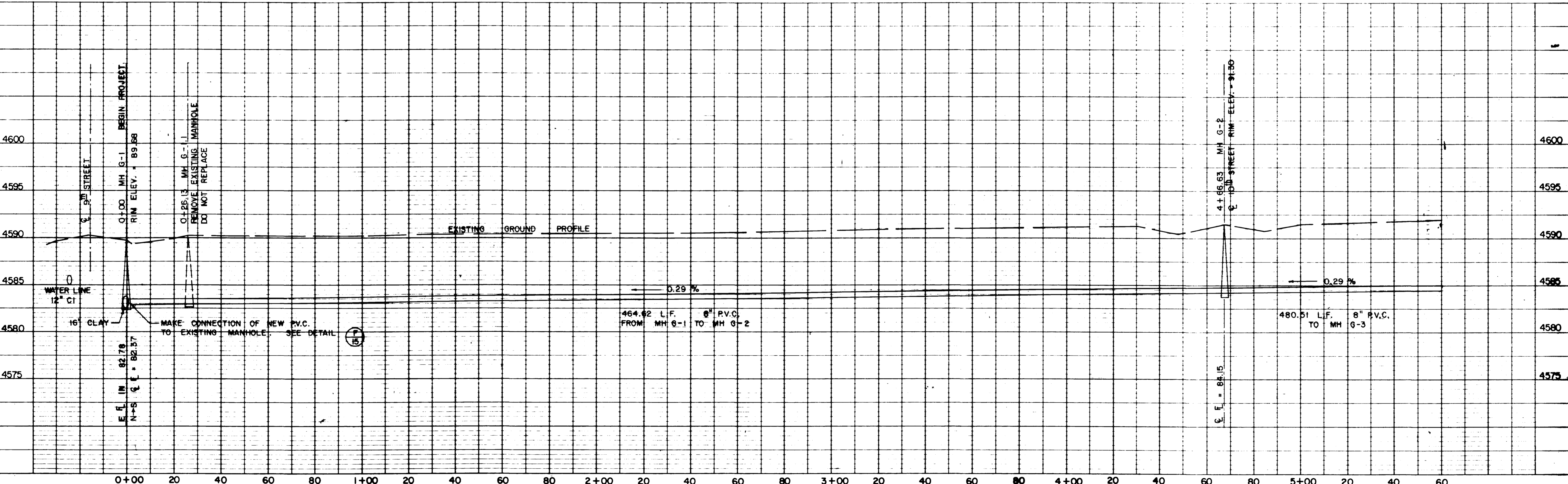
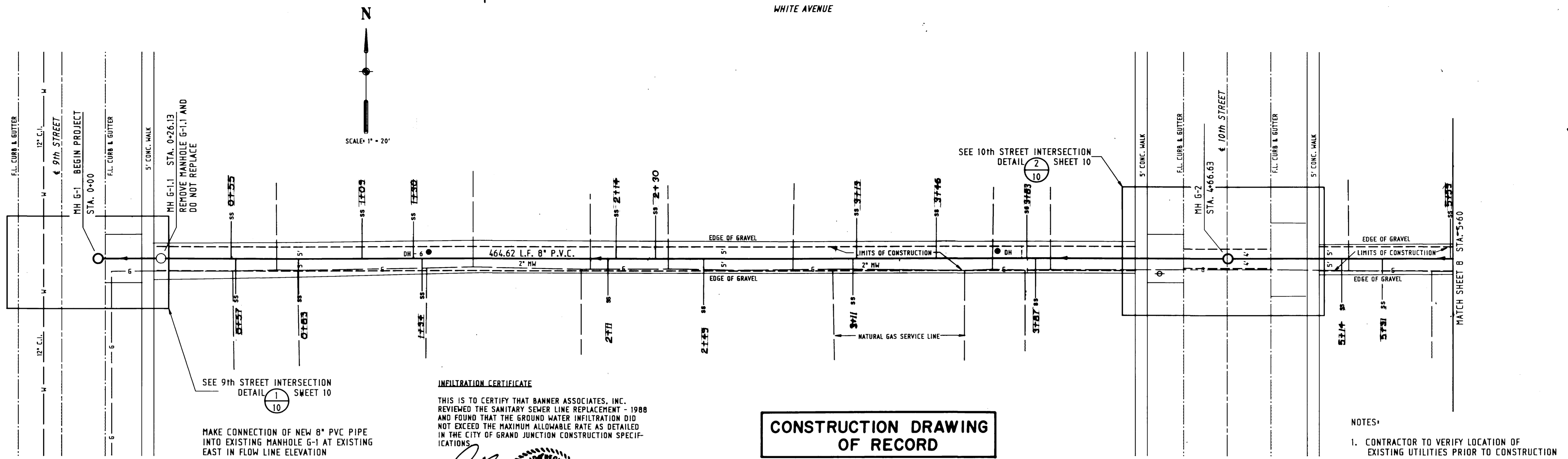
SEWER LINE REPLACEMENT — 1988

13th STREET NORTH — WALNUT AVENUE TO BOOKCLIFF AVENUE

Scale: 1" = 20' HORIZ.
 1" = 5' VERT.

Date: JUNE, 1988

Project No. 8117-04
 Sheet No. 4 of 12



Drawn By: _____

APPROVED: _____ FOR _____

DATE: _____

Checked By: JWC

REVIEWED: *Kenneth B. ...*

DATE: _____ FOR BANNER ASSOCIATES, INC.

BANNER

REVISION	DATE	DESCRIPTION	MADE	APPR.

CITY OF GRAND JUNCTION

DEPARTMENT OF PUBLIC WORKS AND UTILITIES

SEWER LINE REPLACEMENT - 1988

9th STREET TO 12th STREET BETWEEN WHITE AVENUE AND ROAD AVENUE

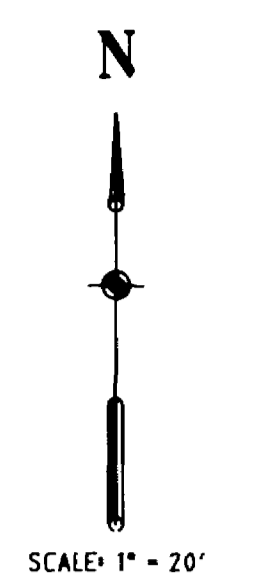
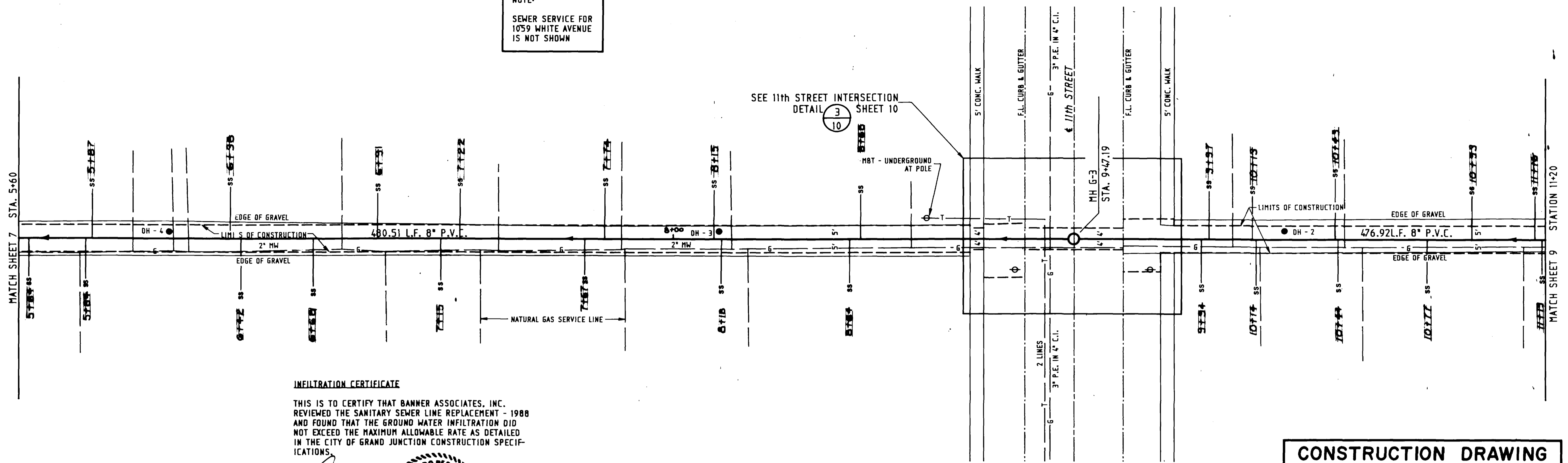
Scale: 1" = 20' HORIZ
1" = 5' VERT.

Date: JUNE, 1988

Project No. 8117-0

Sheet No. 5 of 12

NOTE:
SEWER SERVICE FOR
1059 WHITE AVENUE
IS NOT SHOWN

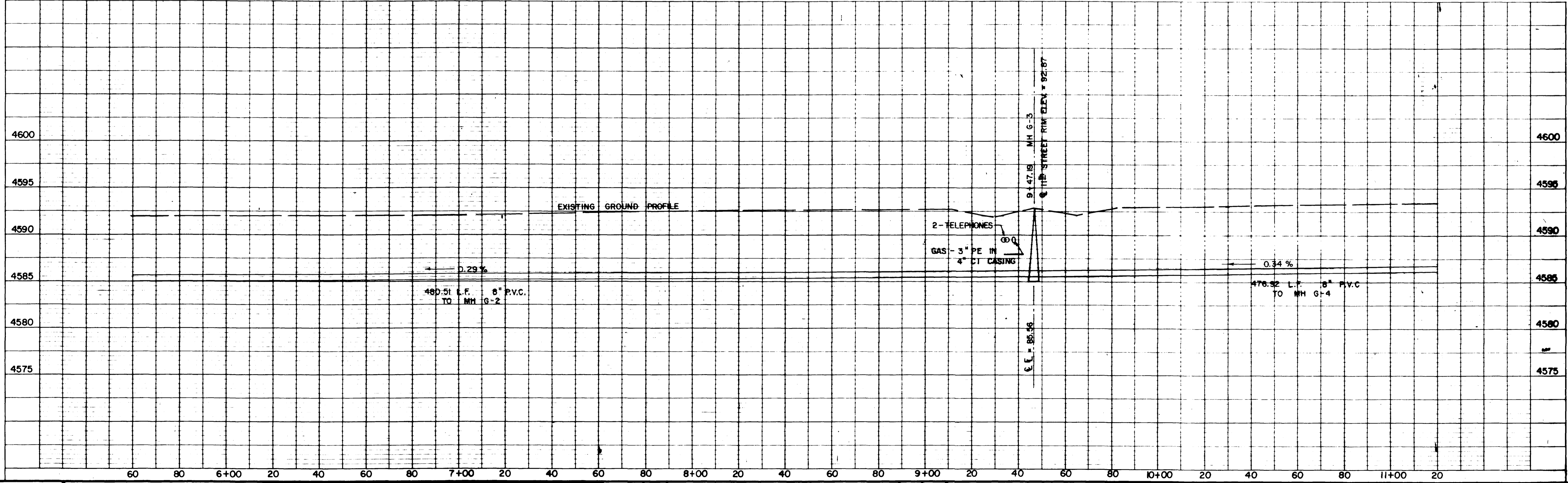


INFILTRATION CERTIFICATE
THIS IS TO CERTIFY THAT BANNER ASSOCIATES, INC. REVIEWED THE SANITARY SEWER LINE REPLACEMENT - 1988 AND FOUND THAT THE GROUND WATER INFILTRATION DID NOT EXCEED THE MAXIMUM ALLOWABLE RATE AS DETAILED IN THE CITY OF GRAND JUNCTION CONSTRUCTION SPECIFICATIONS.

[Signature]
BANNER ASSOCIATES, INC.
PROFESSIONAL ENGINEER
20001

**CONSTRUCTION DRAWING
OF RECORD**

ROOD AVENUE



Drawn By: _____
APPROVED: _____
DATE: _____ FOR _____

Checked By: *[Signature]*
JWC
REVIEWED: *[Signature]*
DATE: 6-15-88 FOR BANNER ASSOCIATES, INC.

BANNER

REVISION	DATE	DESCRIPTION	MADE	APPR.

CITY OF GRAND JUNCTION
DEPARTMENT OF PUBLIC WORKS AND UTILITIES

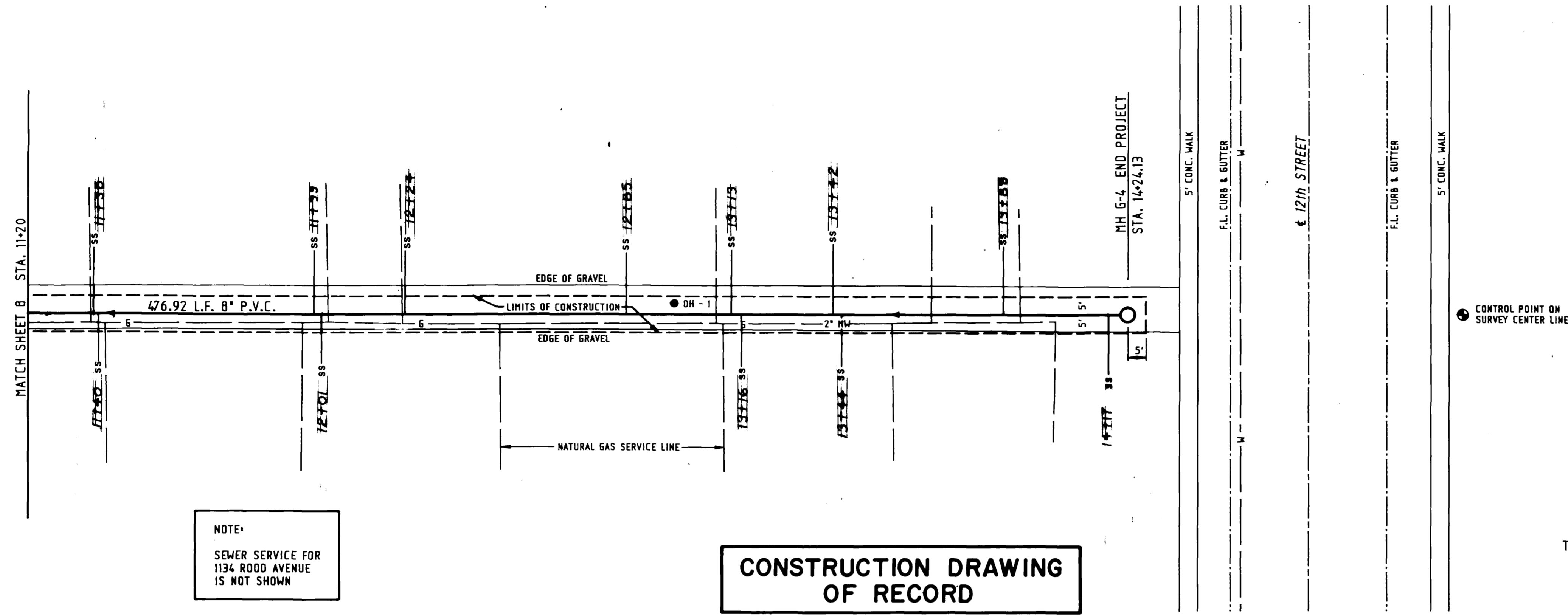
SEWER LINE REPLACEMENT - 1988
9th STREET TO 12th STREET BETWEEN WHITE AVENUE AND ROOD AVENUE

Scale: 1" = 20' HORIZ.
1" = 5' VERT.

Date: JUNE, 1988

Project No. 8117-04
Sheet No. 6 of 12

WHITE AVENUE



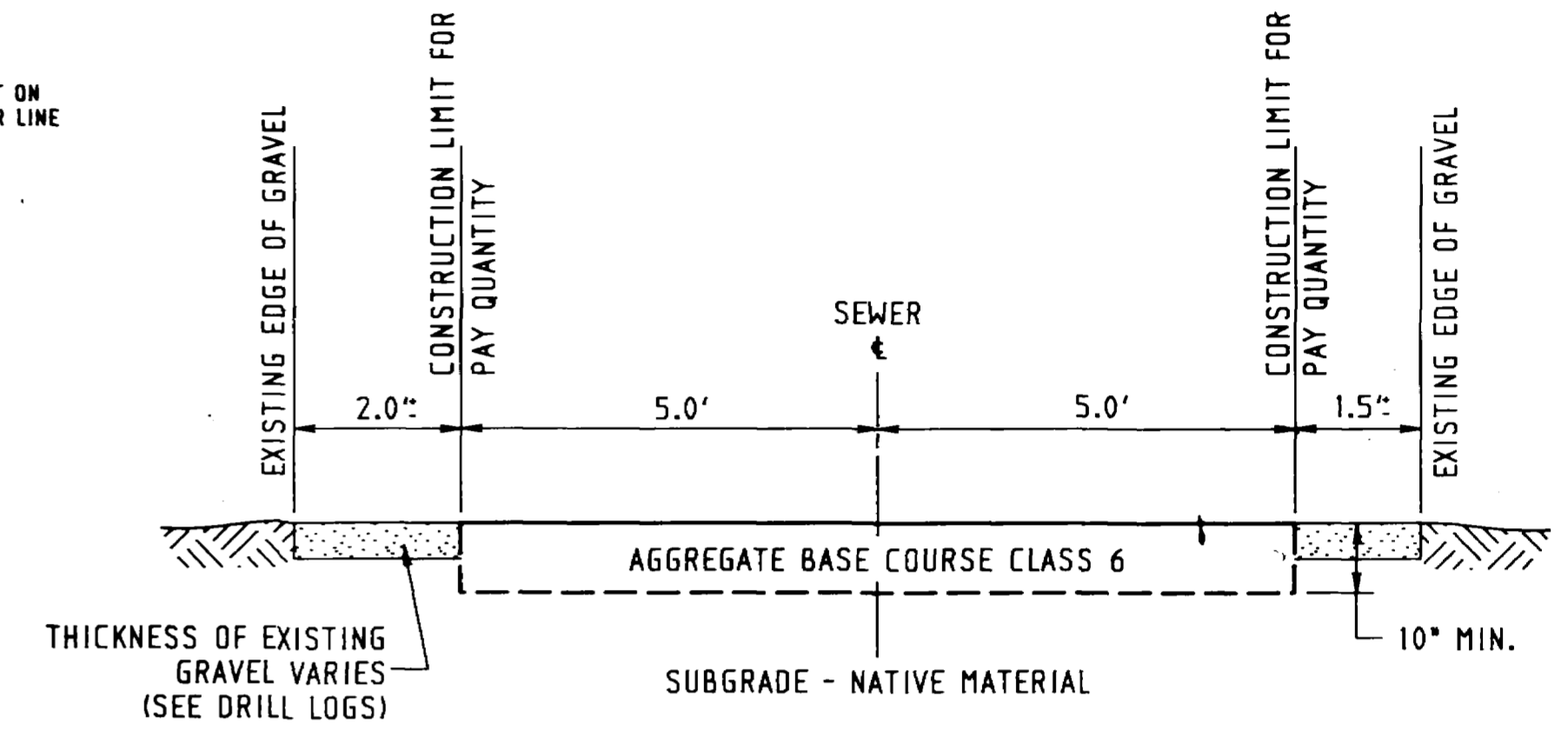
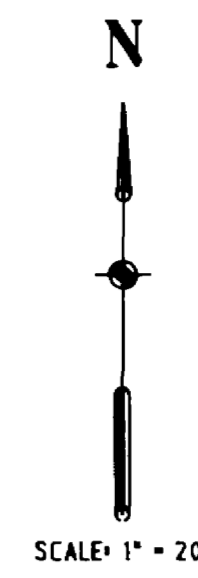
NOTE:
SEWER SERVICE FOR
1134 ROOD AVENUE
IS NOT SHOWN

**CONSTRUCTION DRAWING
OF RECORD**

ROOD AVENUE

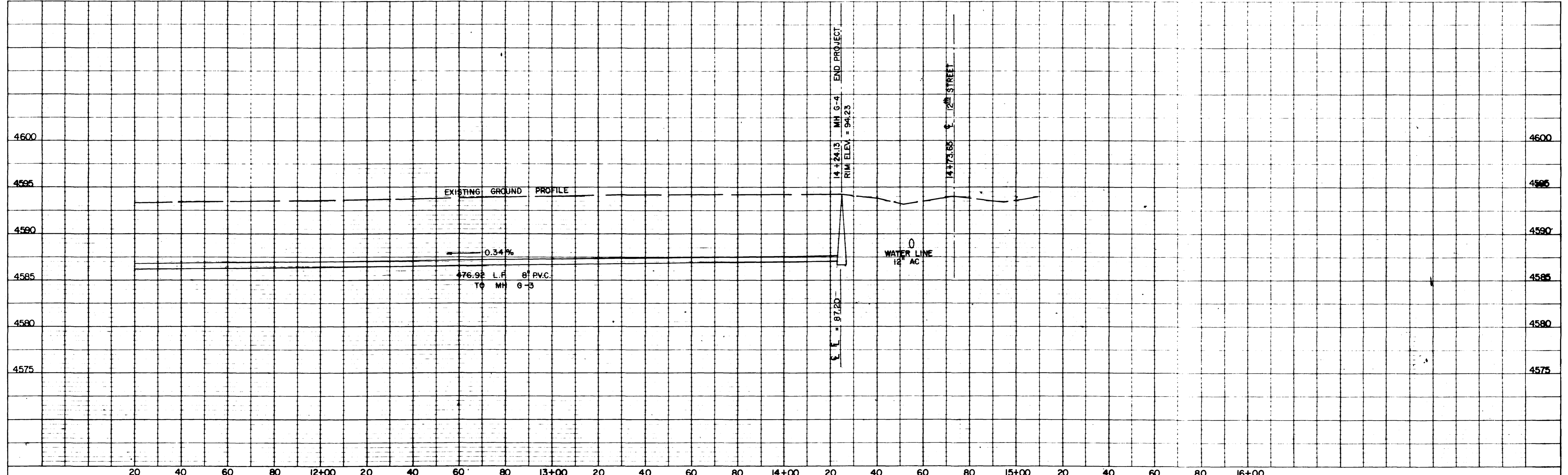
INFILTRATION CERTIFICATE

THIS IS TO CERTIFY THAT BANNER ASSOCIATES, INC. REVIEWED THE SANITARY SEWER LINE REPLACEMENT - 1988 AND FOUND THAT THE GROUND WATER INFILTRATION DID NOT EXCEED THE MAXIMUM ALLOWABLE RATE AS DETAILED IN THE CITY OF GRAND JUNCTION CONSTRUCTION SPECIFICATIONS.



NOTE: REDUCE THICKNESS OF AGGREGATE BASE COURSE CLASS 6 TO 6" IF PIT RUN OR CLASS 3 MATERIAL IS USED FOR SUBGRADE BACKFILL.

**TYPICAL ALLEY SURFACE REPLACEMENT
DETAIL**



Drawn By: _____

APPROVED: _____ FOR _____

DATE: _____

Checked By: _____

REVIEWED: _____ FOR BANNER ASSOCIATES, INC.

DATE: _____

BANNER

REVISION	DATE	DESCRIPTION	MADE	APPR.

CITY OF GRAND JUNCTION DEPARTMENT OF PUBLIC WORKS AND UTILITIES

SEWER LINE REPLACEMENT - 1988

9th STREET TO 12th STREET BETWEEN WHITE AVENUE AND ROOD AVENUE

Scale: 1" = 20' HORIZ. 1" = 5' VERT.

Date: JUNE, 1988

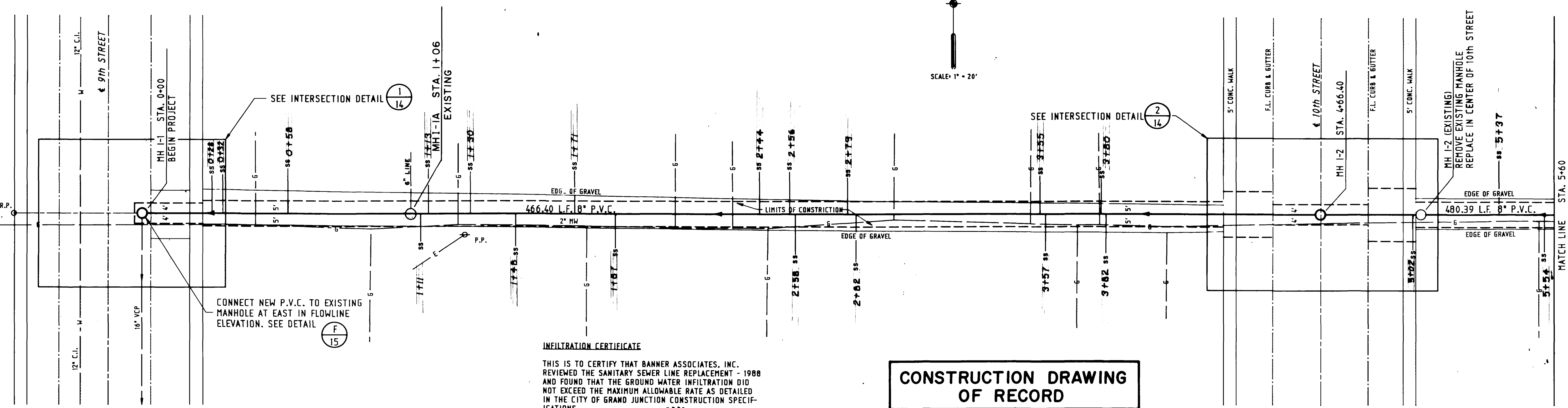
Project No. 8117-04

Sheet No. 7 of 12

GRAND AVENUE

N

SCALE: 1" = 20'



CONNECT NEW P.V.C. TO EXISTING MANHOLE AT EAST IN FLOWLINE ELEVATION. SEE DETAIL (F 15)

SEE INTERSECTION DETAIL (1 14)

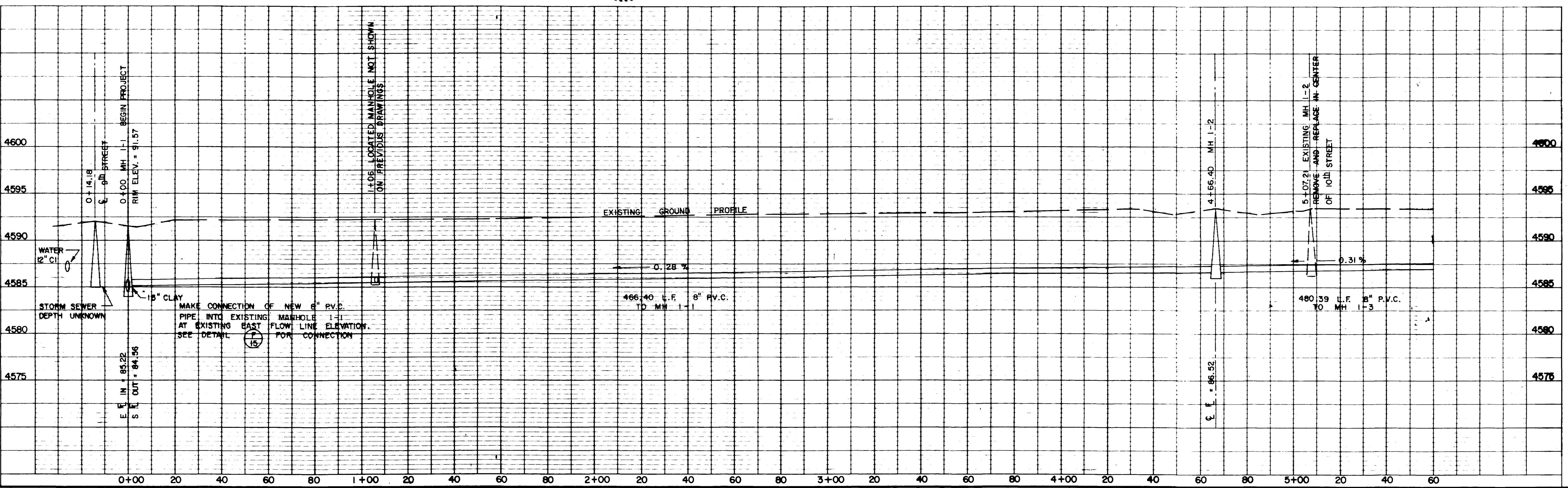
SEE INTERSECTION DETAIL (2 14)

INFILTRATION CERTIFICATE
 THIS IS TO CERTIFY THAT BANNER ASSOCIATES, INC. REVIEWED THE SANITARY SEWER LINE REPLACEMENT - 1988 AND FOUND THAT THE GROUND WATER INFILTRATION DID NOT EXCEED THE MAXIMUM ALLOWABLE RATE AS DETAILED IN THE CITY OF GRAND JUNCTION CONSTRUCTION SPECIFICATIONS.



CONSTRUCTION DRAWING OF RECORD

WHITE AVENUE



Drawn By: _____
 APPROVED: _____
 DATE: _____ FOR _____

Checked By: JWC
 REVIEWED: *Kenneth H. White*
 DATE: *6/1/88* FOR BANNER ASSOCIATES, INC.

BANNER

REVISION	DATE	DESCRIPTION	MADE	APPR.

CITY OF GRAND JUNCTION DEPARTMENT OF PUBLIC WORKS AND UTILITIES

SEWER LINE REPLACEMENT - 1988

9th STREET TO 12th STREET BETWEEN GRAND AVENUE AND WHITE AVENUE

Scale: 1" = 20' HORIZ.
 1" = 5' VERT.

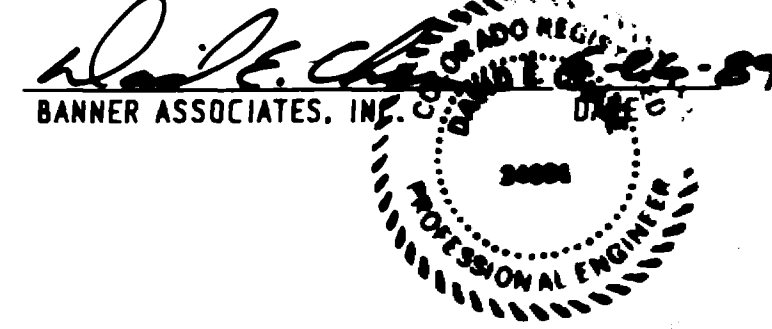
Project No. 8117-04

Date: JUNE, 1988

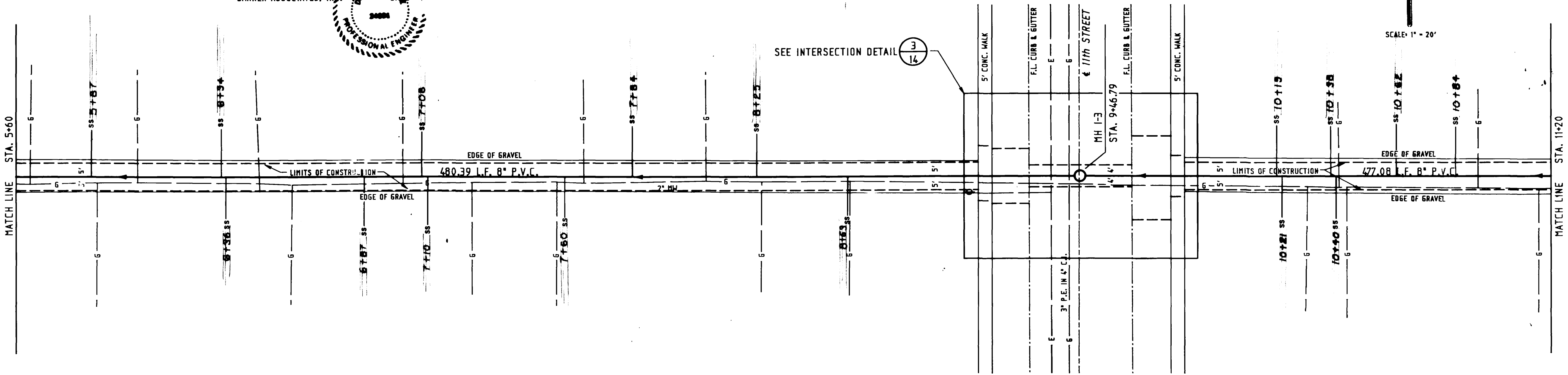
Sheet No. 8 of 12

INFILTRATION CERTIFICATE

THIS IS TO CERTIFY THAT BANNER ASSOCIATES, INC. REVIEWED THE SANITARY SEWER LINE REPLACEMENT - 1988 AND FOUND THAT THE GROUND WATER INFILTRATION DID NOT EXCEED THE MAXIMUM ALLOWABLE RATE AS DETAILED IN THE CITY OF GRAND JUNCTION CONSTRUCTION SPECIFICATIONS.



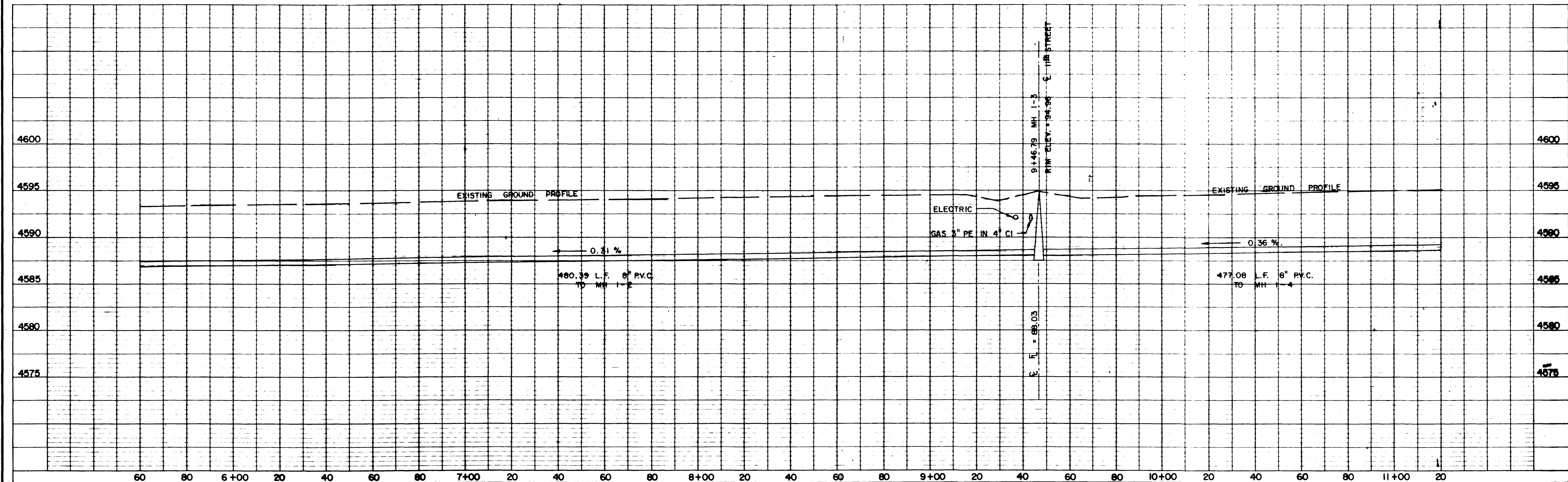
GRAND AVENUE



SCALE: 1" = 20'

CONSTRUCTION DRAWING OF RECORD

WHITE AVENUE



Drawn By: _____
 APPROVED: _____
 DATE: _____ FOR _____
 Checked By: JWC
 REVIEWED: _____
 DATE: 6-15-88 FOR BANNER ASSOCIATES, INC.

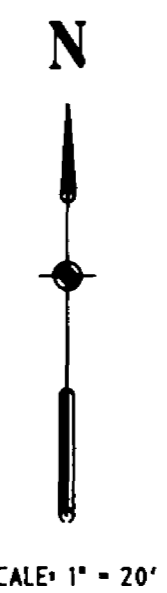
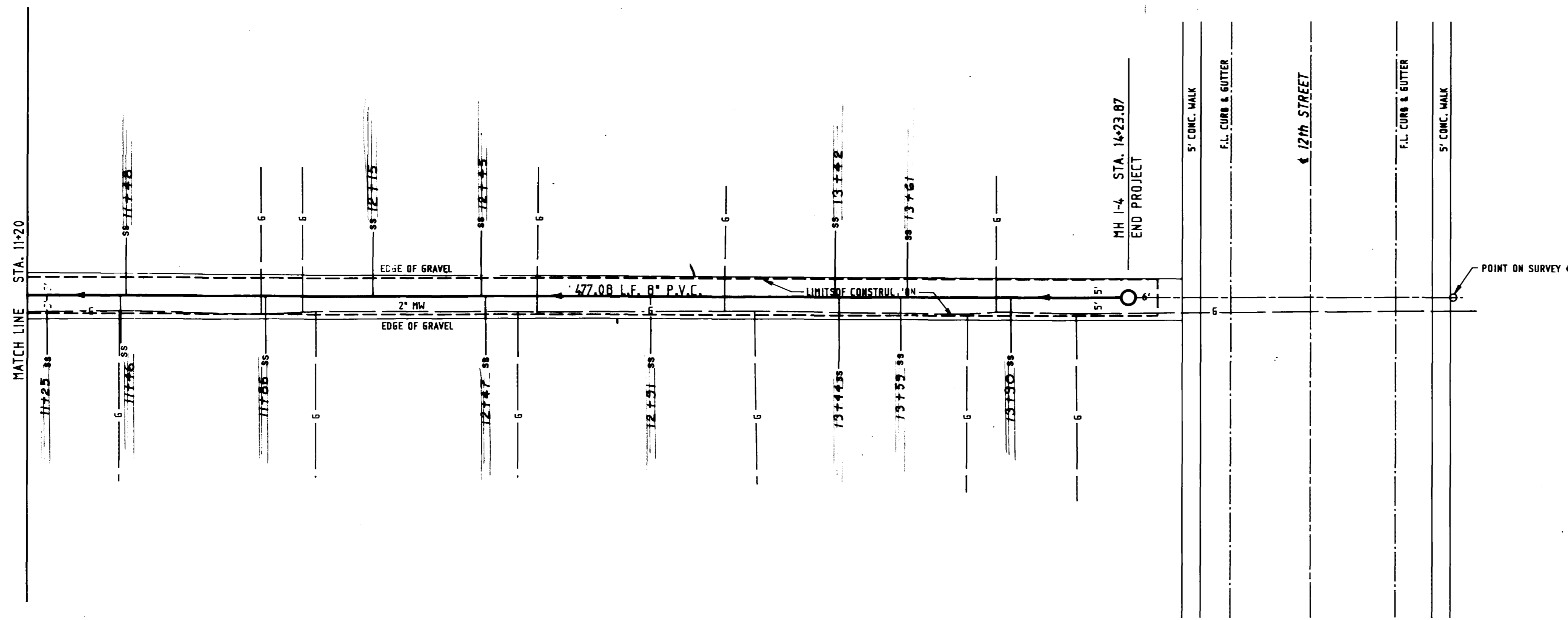
BANNER

REVISION	DATE	DESCRIPTION	MADE	APPR.

CITY OF GRAND JUNCTION DEPARTMENT OF PUBLIC WORKS AND UTILITIES
SEWER LINE REPLACEMENT - 1988
 9th STREET TO 12th STREET BETWEEN GRAND AVENUE AND WHITE AVENUE

Scale: 1" = 20' HORIZ.
 1" = 5' VERT.
 Date: JUNE, 1988
 Project No. 8117-04
 Sheet No. 9 of 12

GRAND AVENUE

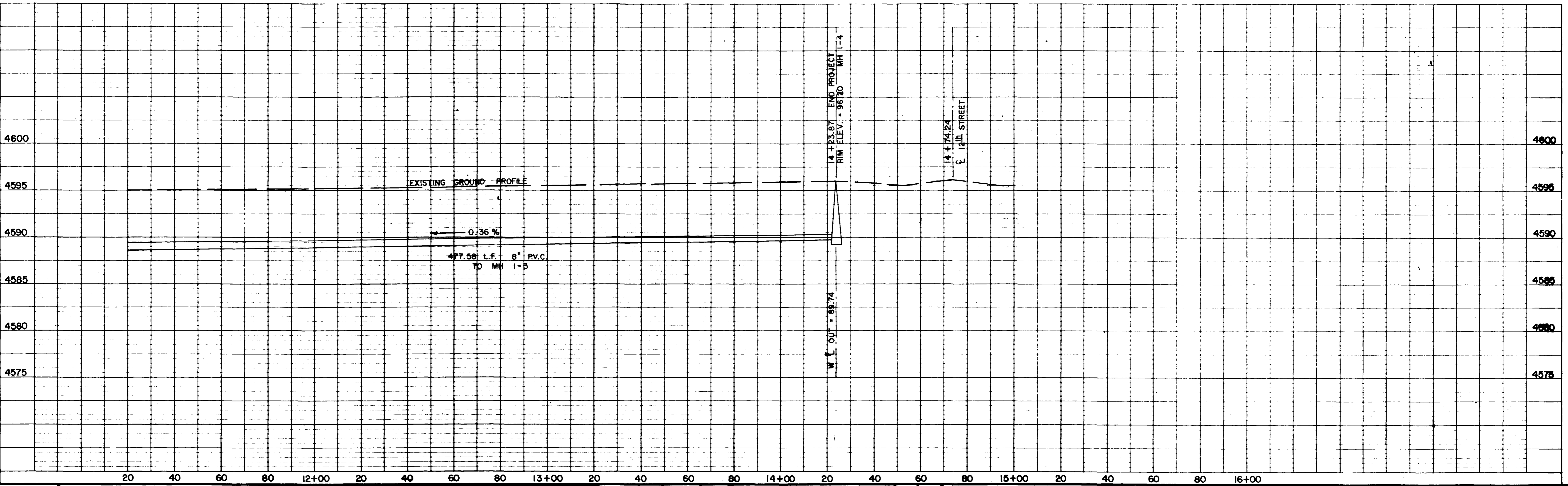


INFILTRATION CERTIFICATE
 THIS IS TO CERTIFY THAT BANNER ASSOCIATES, INC. REVIEWED THE SANITARY SEWER LINE REPLACEMENT - 1988 AND FOUND THAT THE GROUND WATER INFILTRATION DID NOT EXCEED THE MAXIMUM ALLOWABLE RATE AS DETAILED IN THE CITY OF GRAND JUNCTION CONSTRUCTION SPECIFICATIONS.

[Signature]
 BANNER ASSOCIATES, INC.
 PROFESSIONAL ENGINEER
 24001

CONSTRUCTION DRAWING OF RECORD

WHITE AVENUE



Drawn By: _____
 APPROVED: _____
 DATE: _____ FOR: _____

Checked By: JWC
 REVIEWED: *[Signature]*
 DATE: 6-15-88 FOR BANNER ASSOCIATES, INC.

BANNER
 BANNER ASSOCIATES, INC. • CONSULTING ENGINEERS & ARCHITECTS
 2117 CROSSROADS BOULEVARD • GRAND JUNCTION, CO 81501 • 970-241-1112

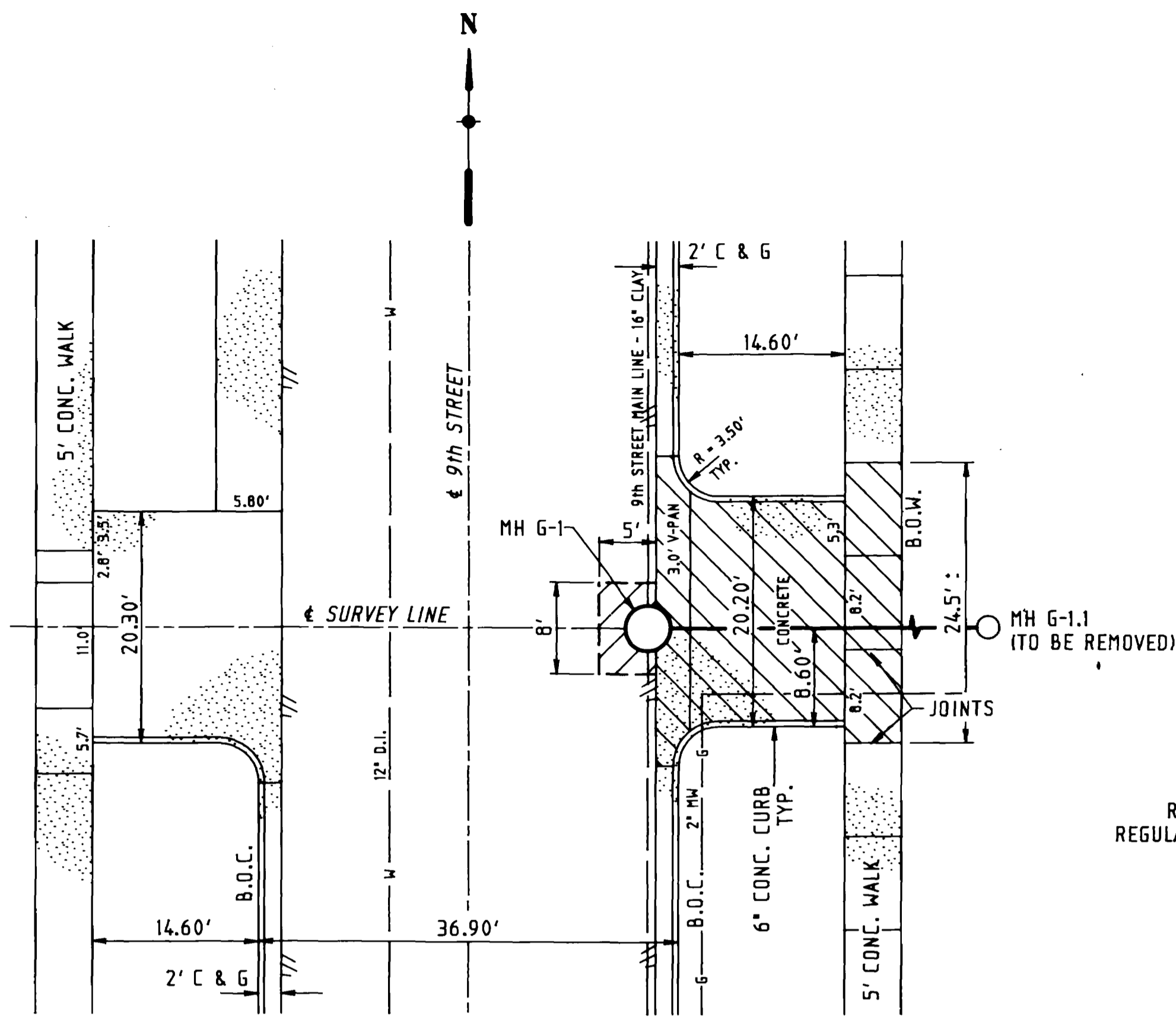
REVISION	DATE	DESCRIPTION	MADE	APPR.

CITY OF GRAND JUNCTION DEPARTMENT OF PUBLIC WORKS AND UTILITIES

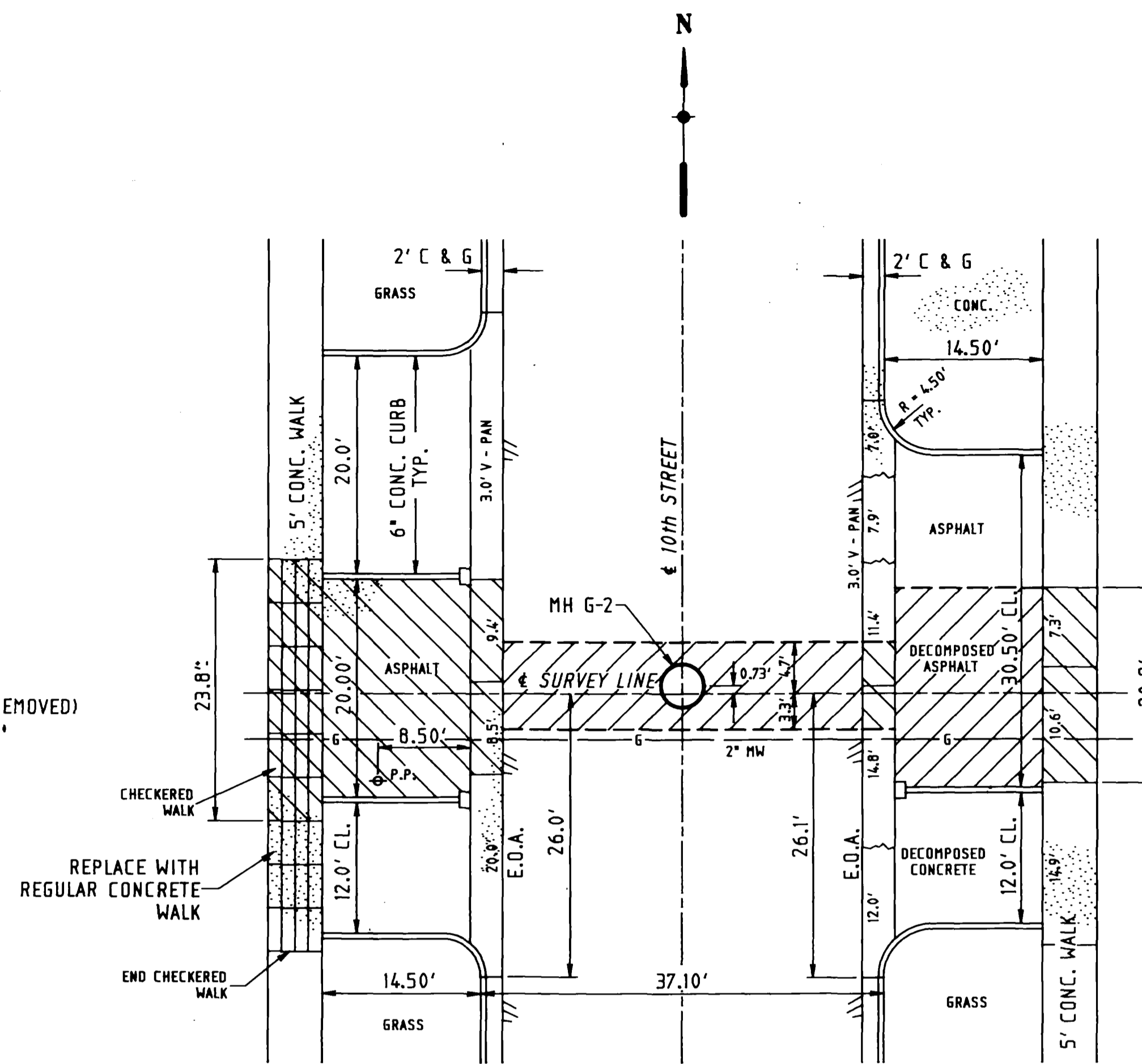
SEWER LINE REPLACEMENT - 1988

9th STREET TO 12th STREET BETWEEN GRAND AVENUE AND WHITE AVENUE

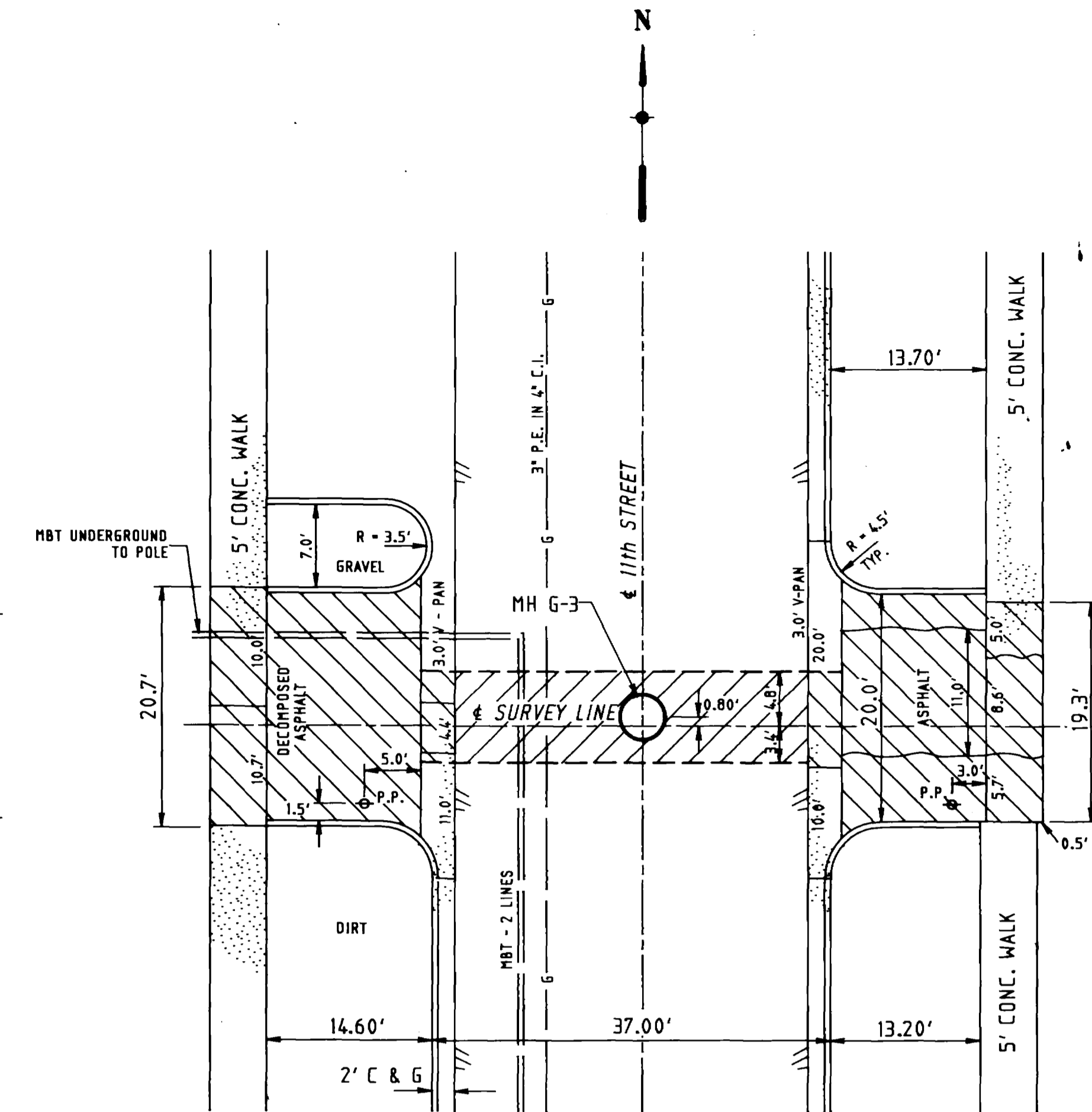
Scale: 1" = 20' HORIZ. 1" = 5' VERT.
 Date: JUNE, 1988
 Project No. 8117-04
 Sheet No. 10 of 12



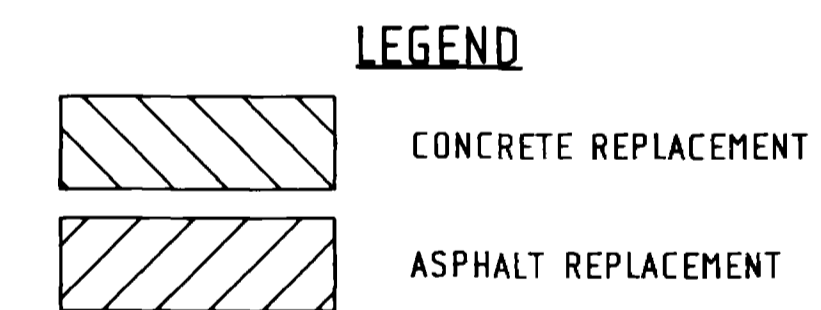
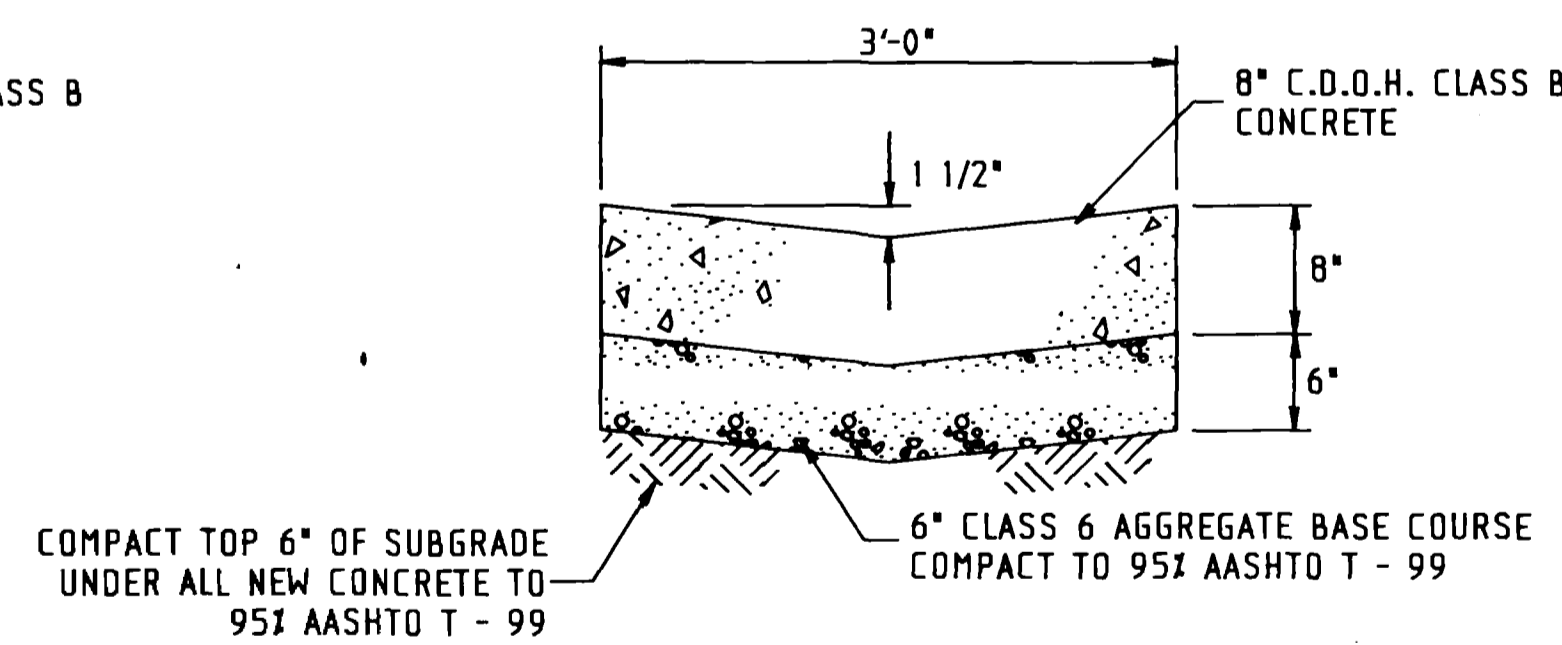
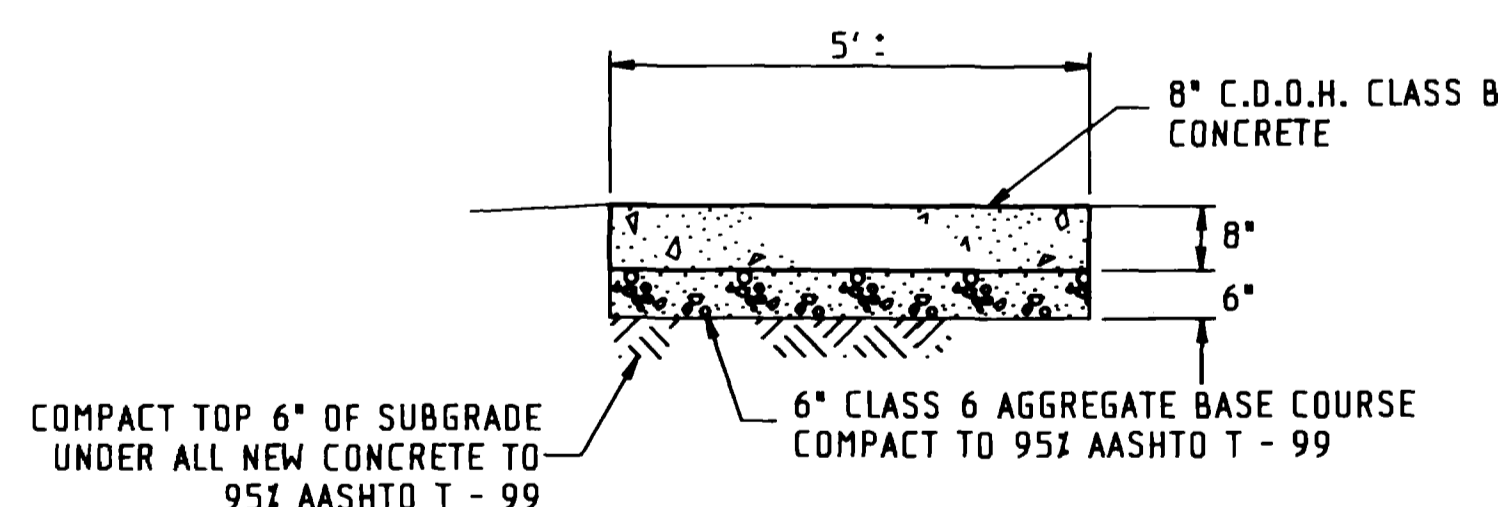
1
13 9th STREET INTERSECTION
SCALE: 1" = 10'



2
13 10th STREET INTERSECTION
SCALE: 1" = 10'



3
13 11th STREET INTERSECTION
SCALE: 1" = 10'



- NOTES:**
- ALL CONCRETE TO BE REPLACED WITH A MINIMUM OF 8" THICK C.D.O.H. CLASS B CONCRETE PLACED ON 6" OF CLASS 6 AGGREGATE BASE COURSE.
 - ALL ASPHALT PAVEMENT TO BE REPLACED WITH THE FOLLOWING SECTION:
 - BASE COURSE - 8" CLASS 6 AGGREGATE BASE COURSE
 - SURFACE COURSE - 3" HOT BITUMINOUS PAVEMENT - GRADING E

DRAWN BY: R.L.C.	REVIEWED _____ DATE: _____ FOR _____
DESIGNED BY: J.W.C.	REVIEWED <i>Kenneth Healy</i>
CHECKED BY: J.W.C.	DATE <i>6-15-88</i> FOR BANNER ASSOCIATES, INC.

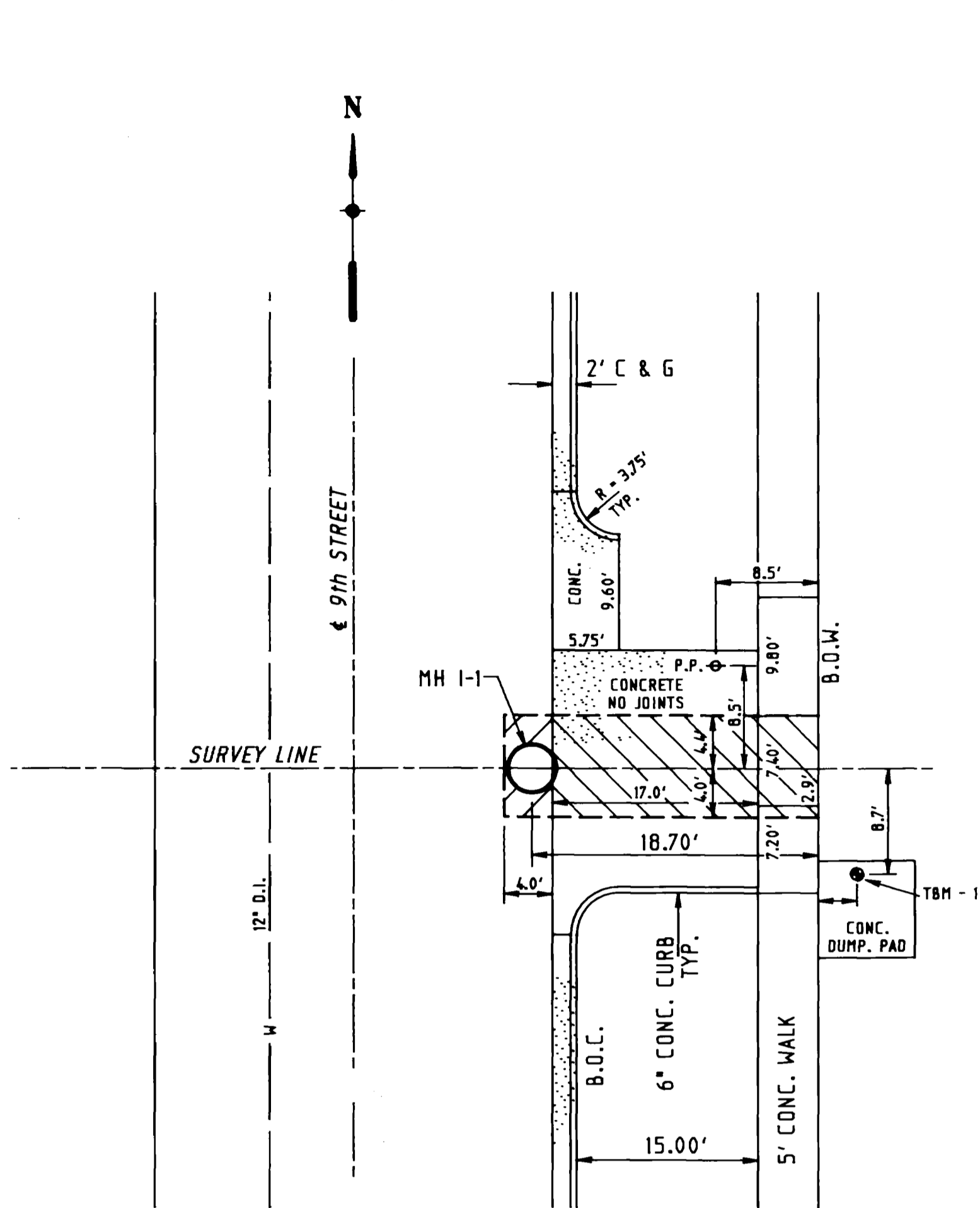
BANNER
BANNER ASSOCIATES, INC. • CONSULTING ENGINEERS & ARCHITECTS
2777 CROSSROADS BOULEVARD • GRAND JUNCTION, CO 81506 • 303.243.2232
605 E. MAIN • SUITE 6 • ASPEN, CO 81611 • 303.925.5857

REVISION	DATE	DESCRIPTION	BY	CK'D

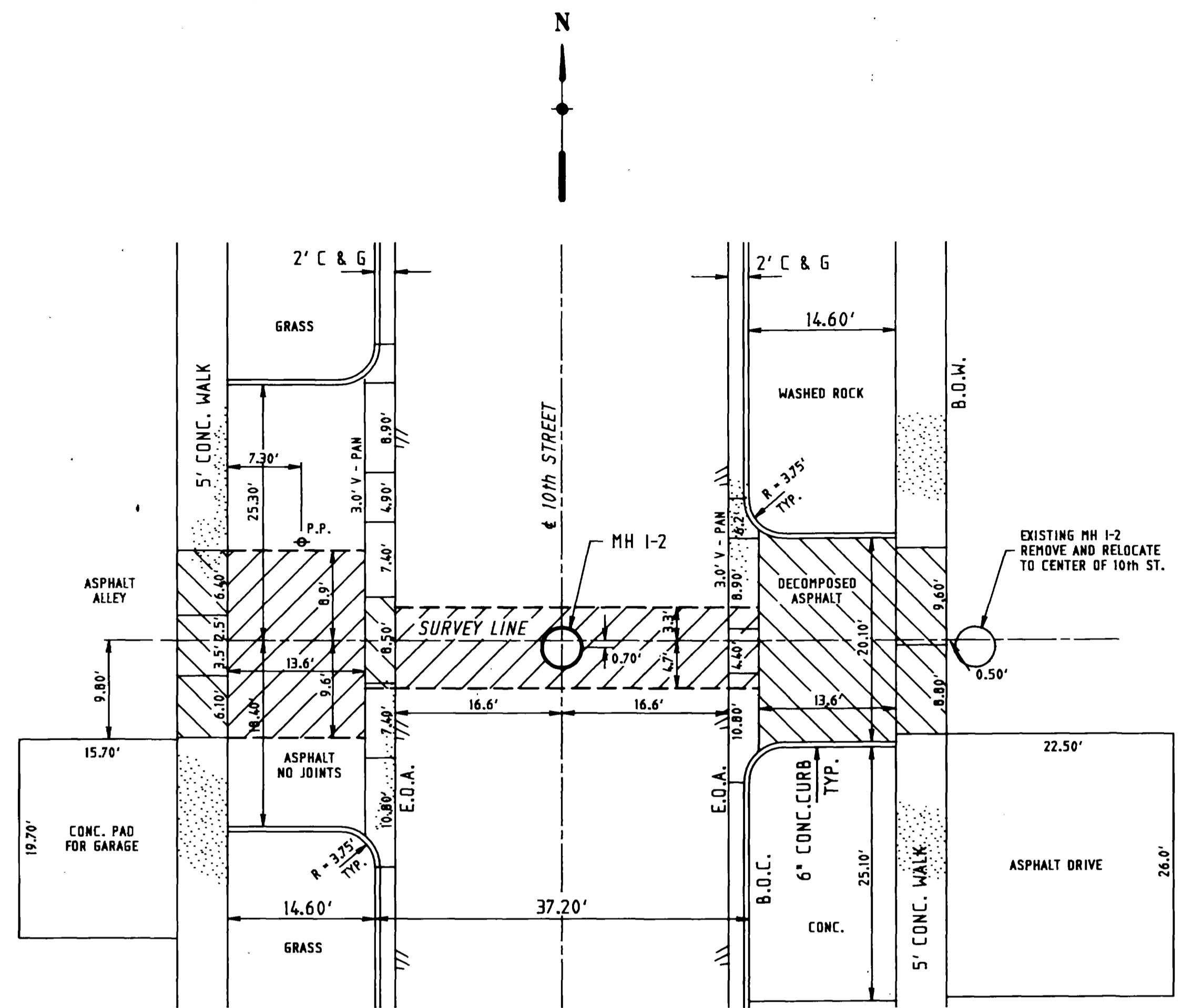
CITY OF GRAND JUNCTION DEPARTMENT OF PUBLIC WORKS AND UTILITIES

INTERSECTION DETAILS
ALLEY BETWEEN WHITE AVENUE AND ROOD AVENUE

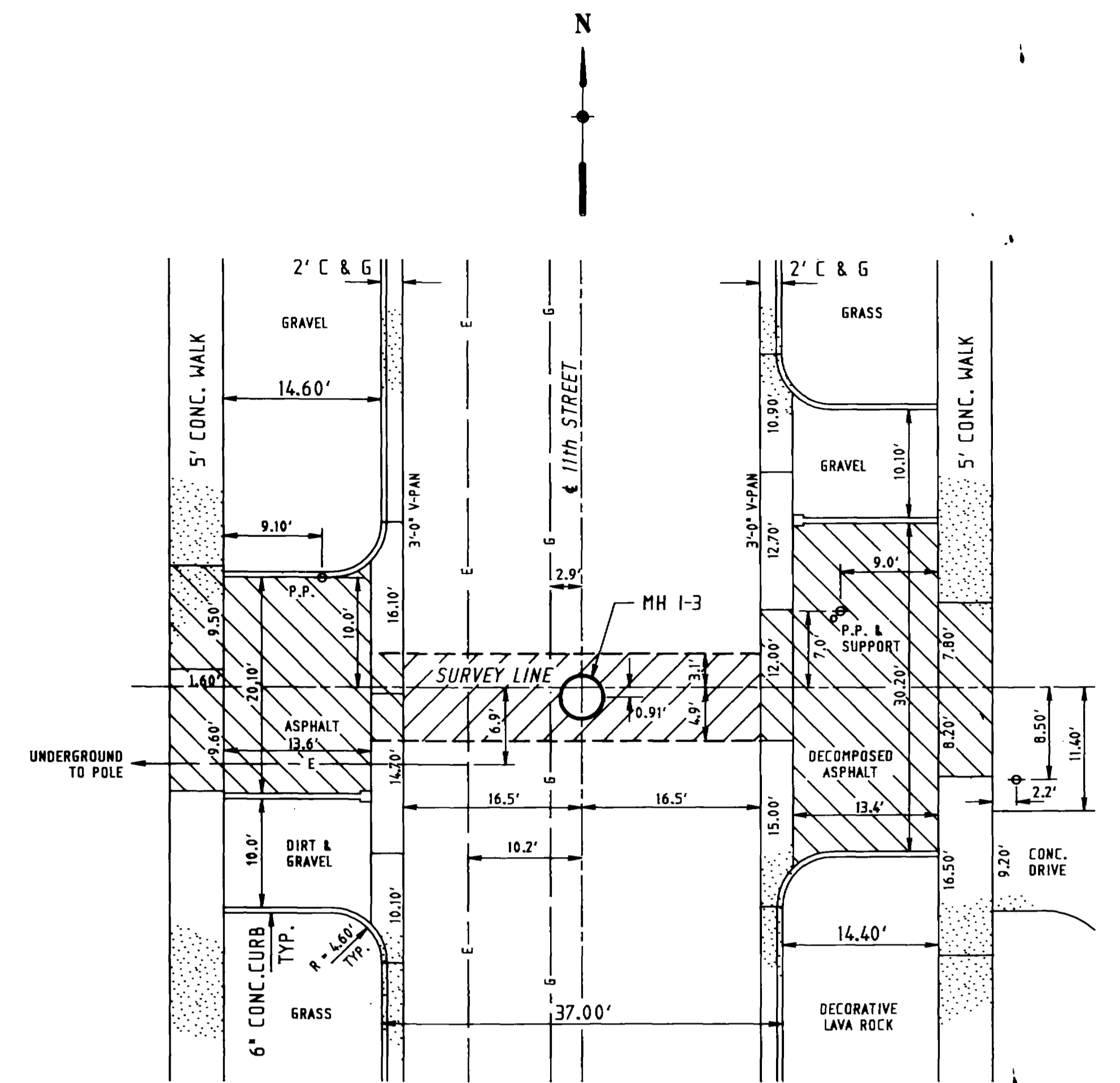
SCALE: 1" = 10'	JOB NO: 8117-04	DATE: 6-88
SHEET NO: 11 of 12		



1
14 9th STREET INTERSECTION
SCALE: 1" = 10'

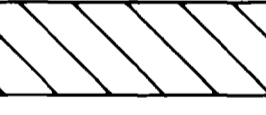


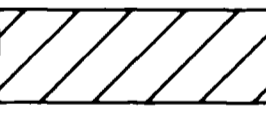
2
14 10th STREET INTERSECTION
SCALE: 1" = 10'



3
14 11th STREET INTERSECTION
SCALE: 1" = 10'

LEGEND

 CONCRETE REPLACEMENT

 ASPHALT REPLACEMENT

NOTE: SEE SHEET 13 OF 17 FOR CONSTRUCTION NOTES AND DETAILS

DRAWN BY: R.L.C.	REVIEWED DATE: _____ FOR _____
DESIGNED BY: J.W.C.	REVIEWED <i>Kenneth Smith</i>
CHECKED BY: J.W.C.	DATE: 6/5/88 FOR BANNER ASSOCIATES, INC.

BANNER

BANNER ASSOCIATES, INC. • CONSULTING ENGINEERS & ARCHITECTS
2700 CROSSROADS BOULEVARD • GRAND JUNCTION, CO 81506 • 303 243 2212
601 E. MAIN • SUTTER • ASPEN, CO 81611 • 303 923 5837

REVISION	DATE	DESCRIPTION	BY	CK'D

CITY OF GRAND JUNCTION DEPARTMENT OF PUBLIC WORKS AND UTILITIES

**INTERSECTION DETAILS
ALLEY BETWEEN GRAND AVENUE AND WHITE AVENUE**

SCALE: 1" = 10'	JOB NO: 8117-04	DATE: 6-88
SHEET NO: 12 of 12		