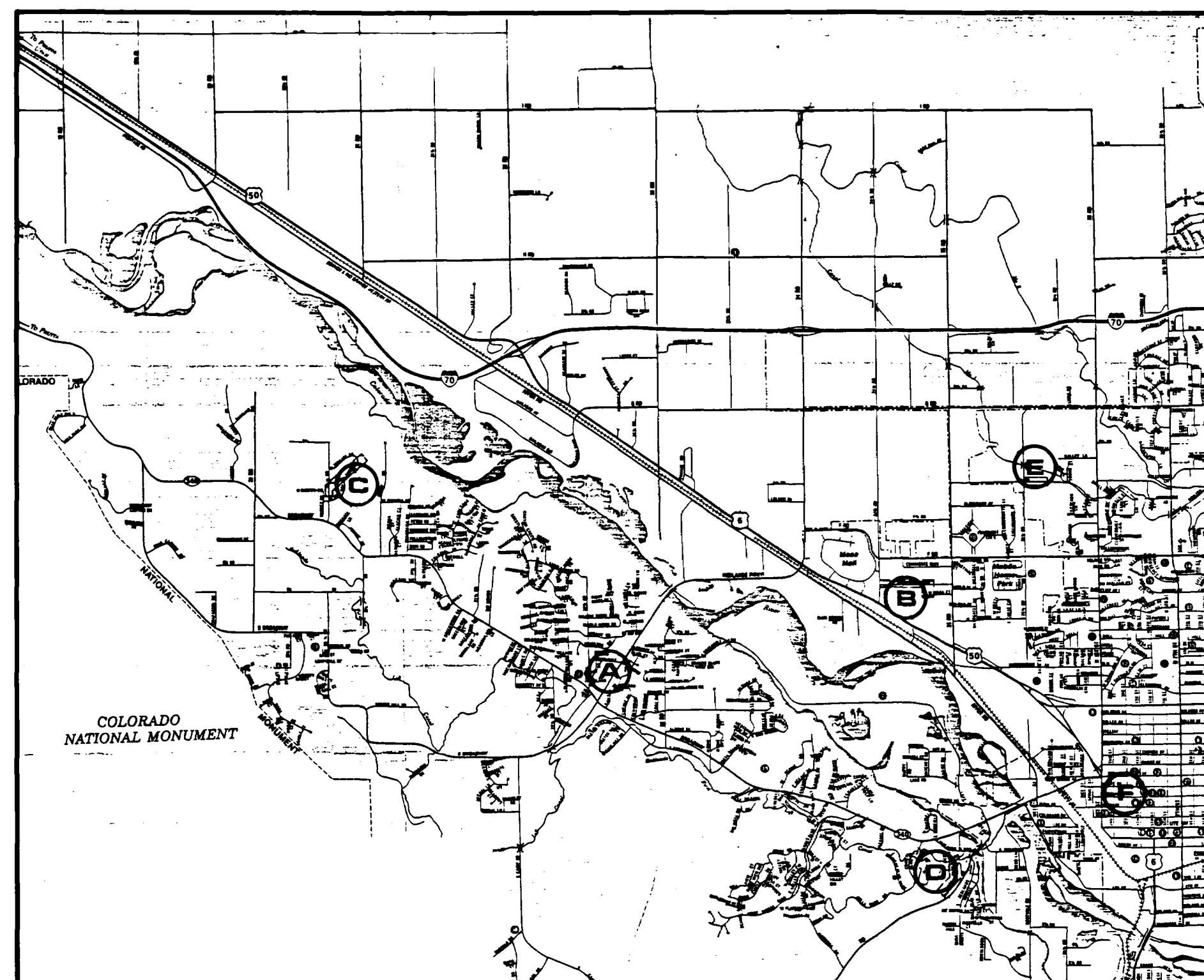


CONSTRUCTION PLANS FOR SEWER LINE EXTENSIONS - 1988 CITY OF GRAND JUNCTION Department of Public Works and Utilities



VICINITY MAP

INDEX OF SHEETS

SHEET NO.	DESCRIPTION
1.	TITLE SHEET
2.	PLAN & PROFILE - FOY DRIVE
3. - 6.	PLAN & PROFILE - WEST MESA COURT/INDUSTRIAL BOULEVARD
7. - 10.	PLAN & PROFILE - COUNTRY SQUIRE SUBDIVISION OUTFALL
11. - 12.	PLAN & PROFILE - GLADE PARK ROAD
13.	PLAN & PROFILE - F 1/2 ROAD/25 1/2 ROAD SERVICE AREA
14.	PLAN & PROFILE - CITY MARKET EXTENSION

CONSTRUCTION DRAWINGS
OF RECORD

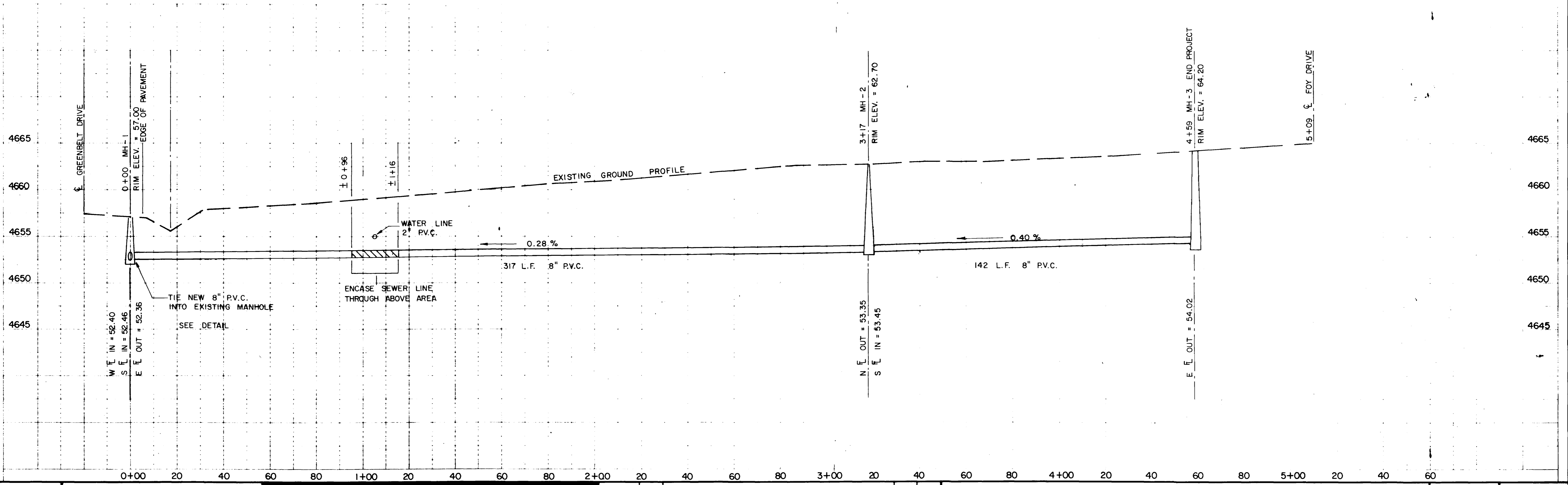
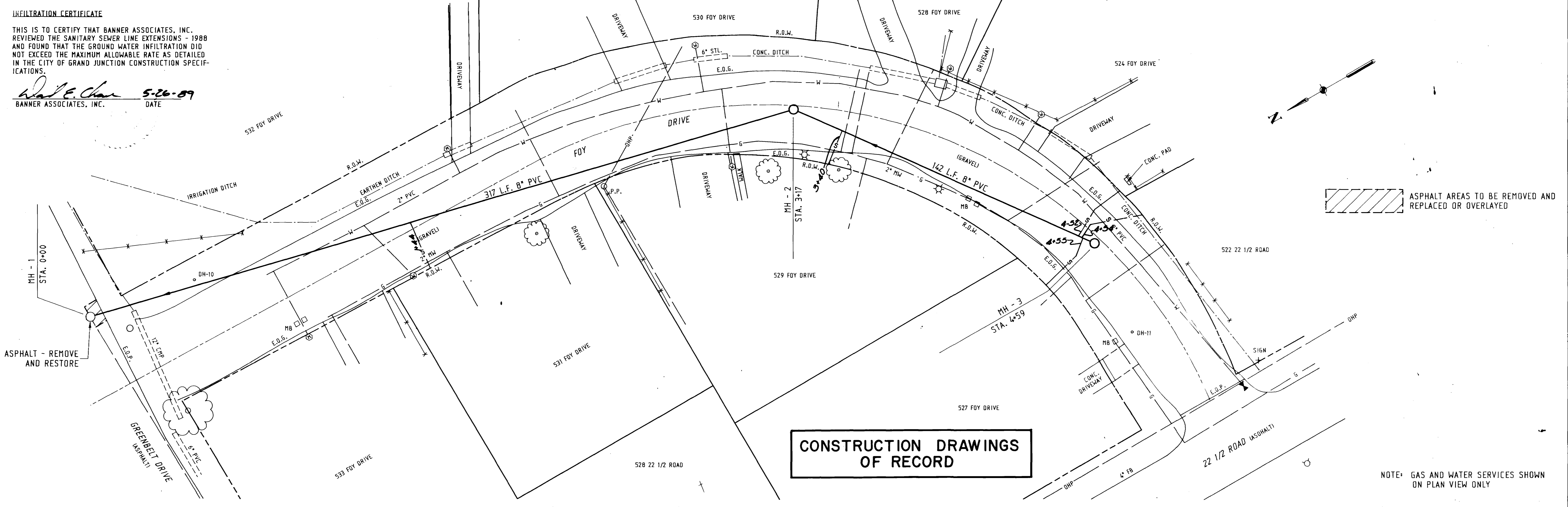


Prepared By:
BANNER ASSOCIATES, INC.
CONSULTING ENGINEERS
GRAND JUNCTION, COLORADO

INFILTRATION CERTIFICATE

THIS IS TO CERTIFY THAT BANNER ASSOCIATES, INC. REVIEWED THE SANITARY SEWER LINE EXTENSIONS - 1988 AND FOUND THAT THE GROUND WATER INFILTRATION DID NOT EXCEED THE MAXIMUM ALLOWABLE RATE AS DETAILED IN THE CITY OF GRAND JUNCTION CONSTRUCTION SPECIFICATIONS.

Walt E. Chan 5-26-89
 BANNER ASSOCIATES, INC. DATE



Drawn By: _____ APPROVED: _____
 DATE: _____ FOR: _____

Checked By: _____ REVIEWED: _____
 DATE: _____ FOR BANNER ASSOCIATES, INC.

BANNER
 BANNER ASSOCIATES, INC. • CONSULTING ENGINEERS & ARCHITECTS
 2777 CROSSROADS BOULEVARD • GRAND JUNCTION, CO 81501 • 303-243-2212

REVISION	DATE	DESCRIPTION	MADE	APPR

CITY OF GRAND JUNCTION DEPARTMENT OF PUBLIC WORKS AND UTILITIES

FOY DRIVE
 SANITARY SEWER SYSTEM EXTENSIONS - 1988

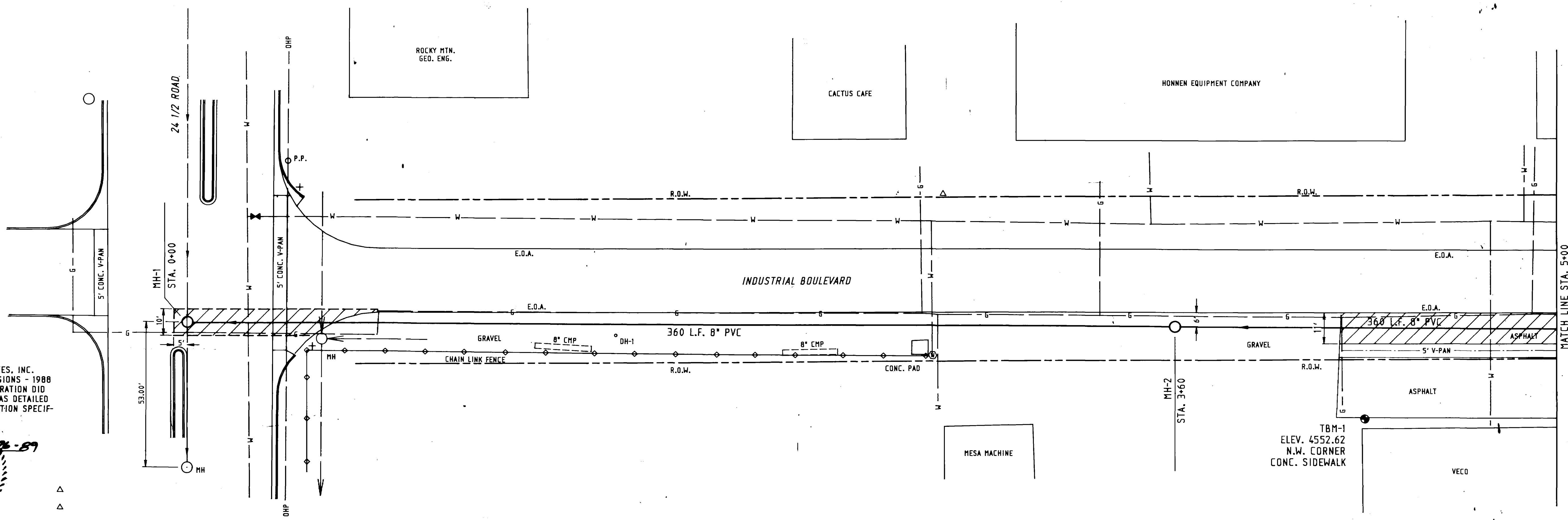
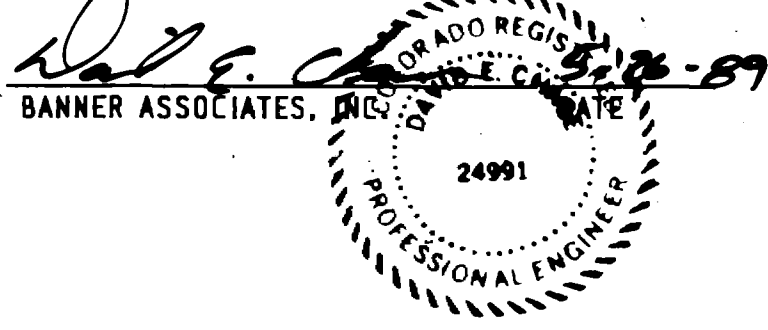
Scale: 1" = 20' HORIZ.
 1" = 5' VERT.

Date: AUG., 1988

Project No. 8117-05 A
 Sheet No. 2 of 14

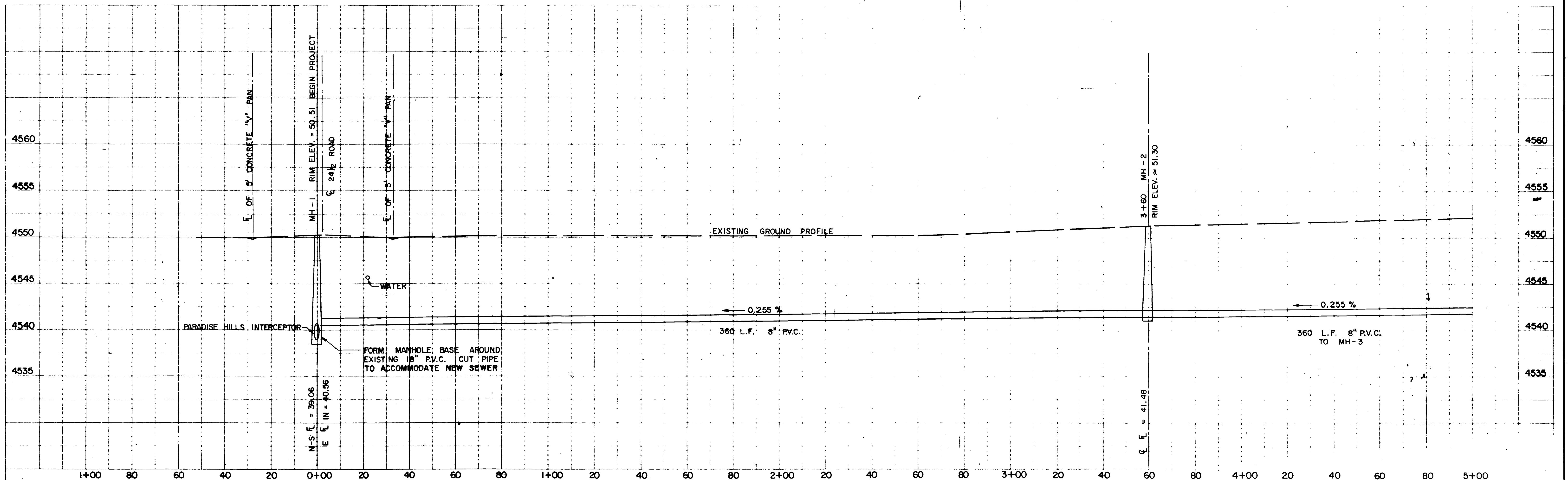


INFILTRATION CERTIFICATE
 THIS IS TO CERTIFY THAT BANNER ASSOCIATES, INC. REVIEWED THE SANITARY SEWER LINE EXTENSIONS - 1988 AND FOUND THAT THE GROUND WATER INFILTRATION DID NOT EXCEED THE MAXIMUM ALLOWABLE RATE AS DETAILED IN THE CITY OF GRAND JUNCTION CONSTRUCTION SPECIFICATIONS.



CONSTRUCTION DRAWINGS OF RECORD

ASPHALT AREAS TO BE REMOVED AND REPLACED OR OVERLAYED
 NOTE: GAS AND WATER SERVICES SHOWN ON PLAN VIEW ONLY



Drawn By: _____
 APPROVED: _____
 DATE: _____ FOR: _____

Checked By: _____
 REVIEWED: _____
 DATE: _____ FOR BANNER ASSOCIATES, INC.

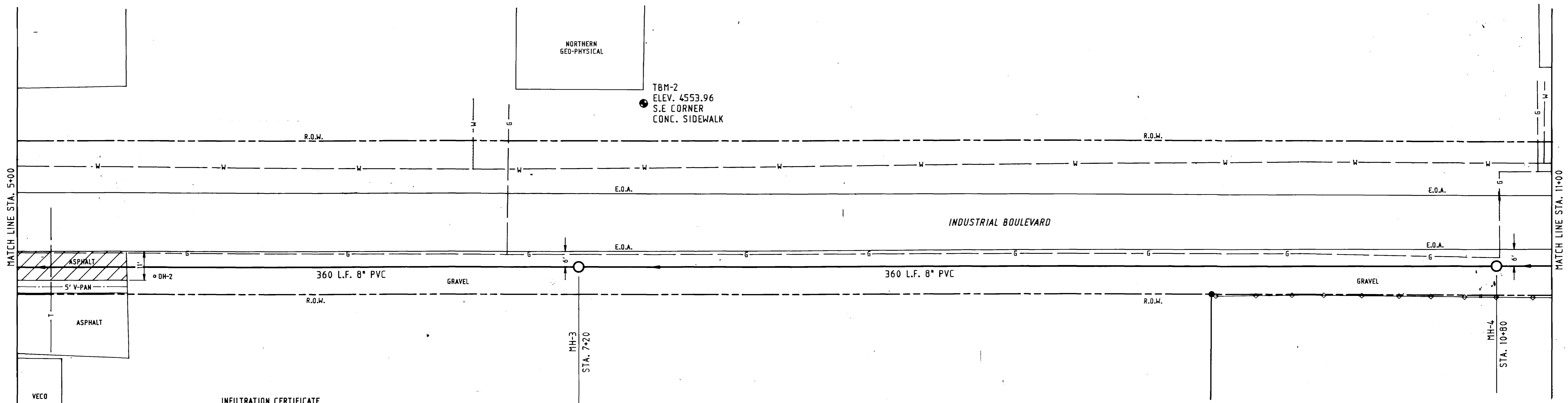
BANNER

REVISION	DATE	DESCRIPTION	MADE	APPR.

CITY OF GRAND JUNCTION DEPARTMENT OF PUBLIC WORKS AND UTILITIES

WEST MESA COURT / INDUSTRIAL BOULEVARD
 SANITARY SEWER SYSTEM EXTENSIONS - 1988

Scale: 1" = 20' HORIZ. / 1" = 5' VERT.
 8117-05 B



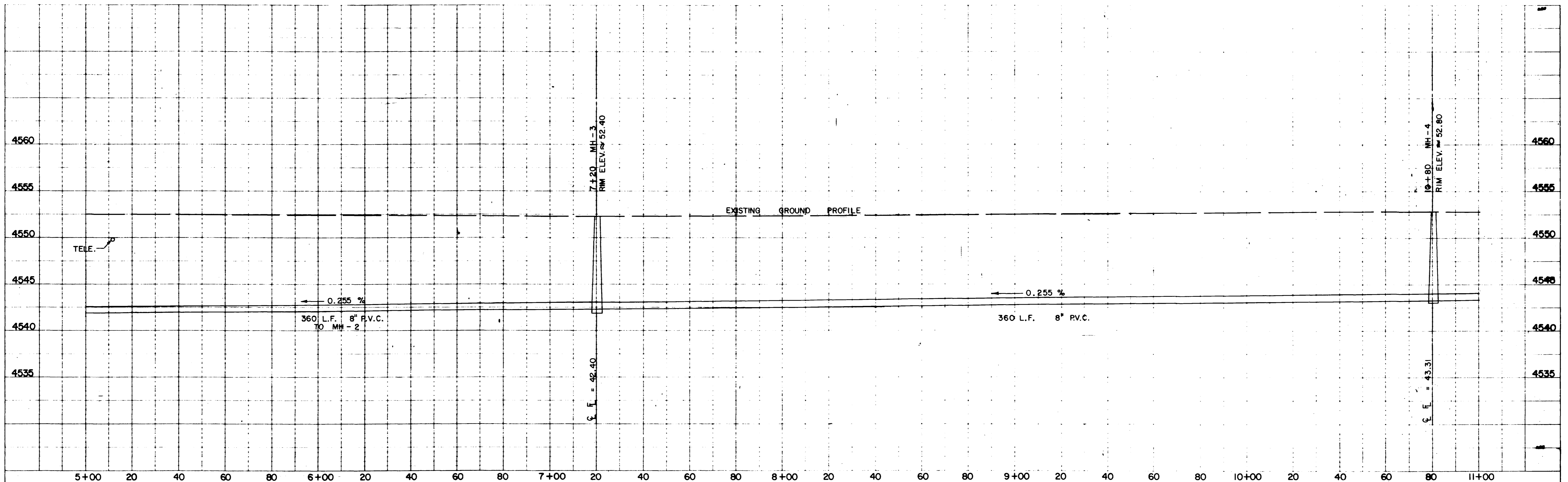
INFILTRATION CERTIFICATE
 THIS IS TO CERTIFY THAT BANNER ASSOCIATES, INC. REVIEWED THE SANITARY SEWER LINE EXTENSIONS - 1988 AND FOUND THAT THE GROUND WATER INFILTRATION DID NOT EXCEED THE MAXIMUM ALLOWABLE RATE AS DETAILED IN THE CITY OF GRAND JUNCTION CONSTRUCTION SPECIFICATIONS.



**CONSTRUCTION DRAWINGS
 OF RECORD**

ASPHALT AREAS TO BE REMOVED AND REPLACED OR OVERLAYED

NOTE: GAS AND WATER SERVICES SHOWN ON PLAN VIEW ONLY



Drawn By: _____
 APPROVED: _____
 DATE: _____ FOR _____

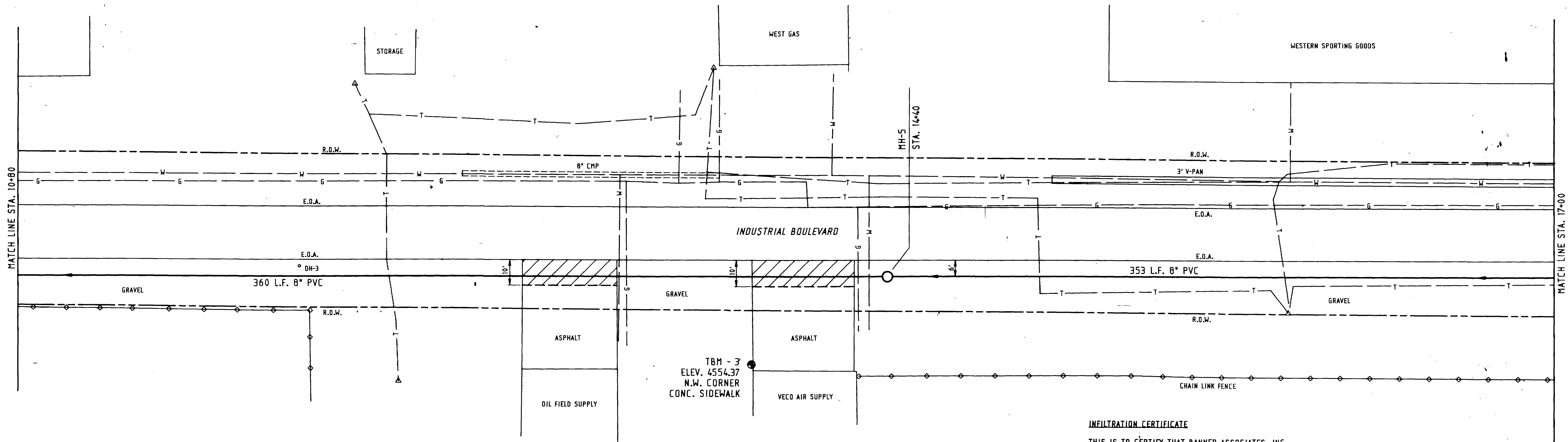
Checked By: _____
 REVIEWED: _____
 DATE: _____ FOR BANNER ASSOCIATES, INC.

BANNER

REVISION	DATE	DESCRIPTION	MADE	APPR.

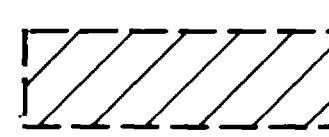
CITY OF GRAND JUNCTION DEPARTMENT OF PUBLIC WORKS AND UTILITIES
 WEST MESA COURT / INDUSTRIAL BOULEVARD
 SANITARY SEWER SYSTEM EXTENSIONS - 1988

Scale: 1" = 20' HORIZ.
 1" = 5' VERT.
 Date: AUG., 1988
 Project No. 8117-05 B
 Sheet No. 4 of 14



INFILTRATION CERTIFICATE

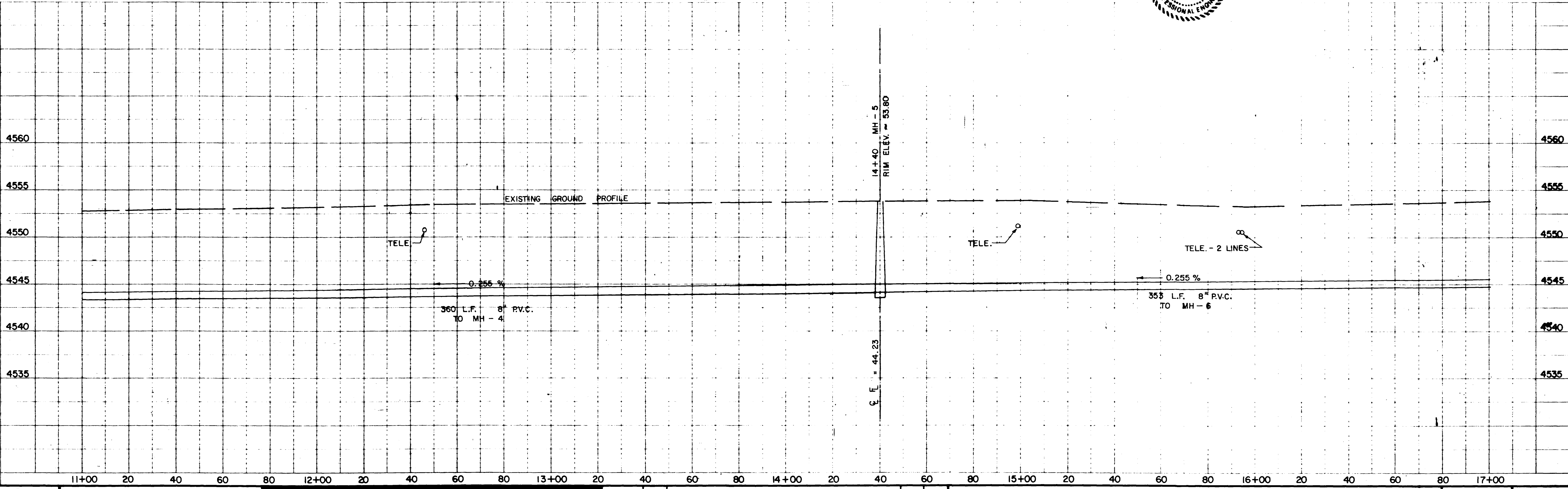
THIS IS TO CERTIFY THAT BANNER ASSOCIATES, INC. REVIEWED THE SANITARY SEWER LINE EXTENSIONS - 1988 AND FOUND THAT THE GROUND WATER INFILTRATION DID NOT EXCEED THE MAXIMUM ALLOWABLE RATE AS DETAILED IN THE CITY OF GRAND JUNCTION CONSTRUCTION SPECIFICATIONS.

 ASPHALT AREAS TO BE REMOVED AND REPLACED OR OVERLAYED

NOTE: GAS AND WATER SERVICES SHOWN ON PLAN VIEW ONLY

CONSTRUCTION DRAWINGS OF RECORD

Walter J. ...
 BANNER ASSOCIATES, INC.
 REGISTERED PROFESSIONAL ENGINEER
 20081



Drawn By: _____
 APPROVED: _____
 DATE: _____ FOR: _____

Checked By: _____
 REVIEWED: _____
 DATE: _____ FOR BANNER ASSOCIATES, INC.

BANNER

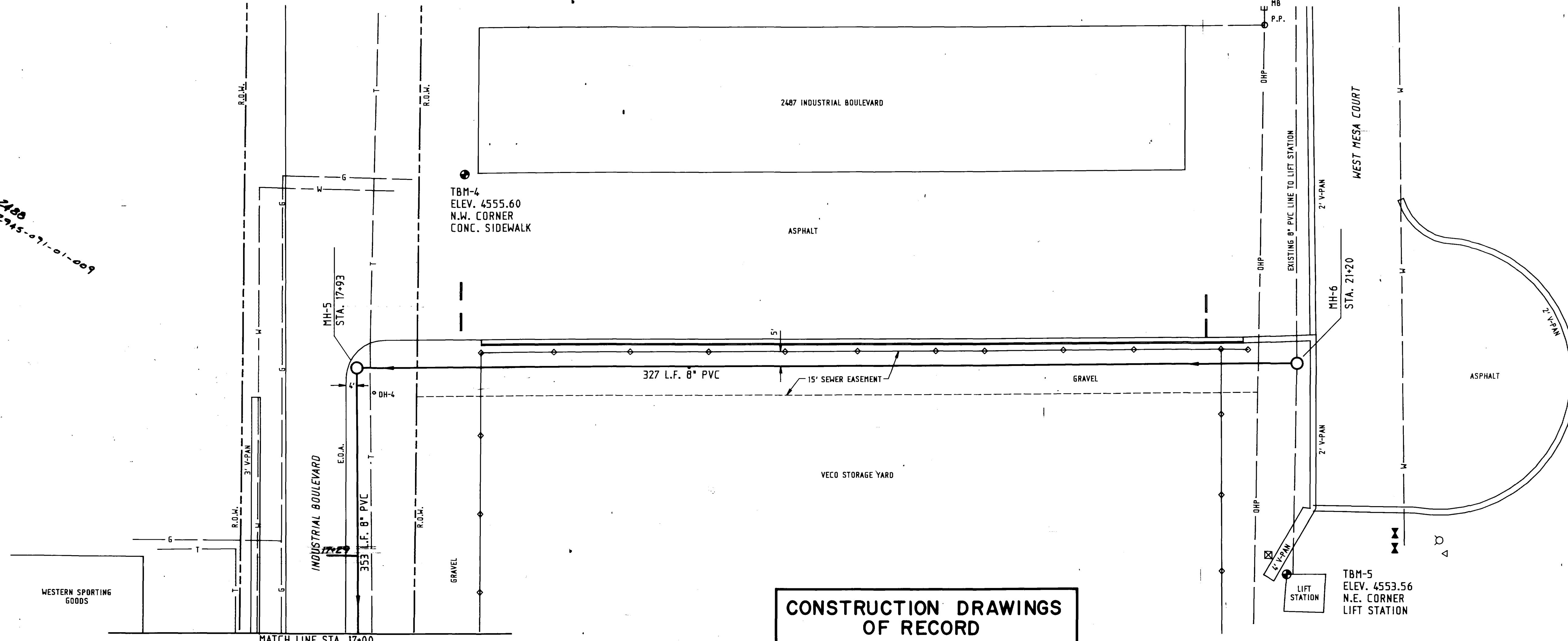
REVISION	DATE	DESCRIPTION	MADE	APPR.

CITY OF GRAND JUNCTION DEPARTMENT OF PUBLIC WORKS AND UTILITIES
 WEST MESA COURT / INDUSTRIAL BOULEVARD
 SANITARY SEWER SYSTEM EXTENSIONS - 1988

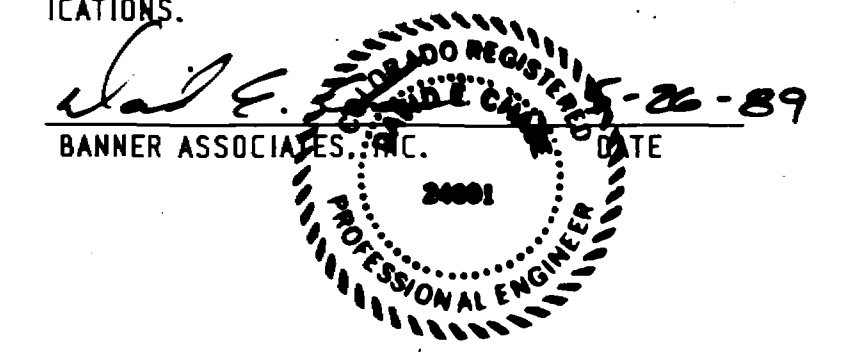
Scale: 1" = 20' HORIZ.
 1" = 5' VERT.
 Date: AUG., 1988

Project No. 8117-05 B
 Sheet No. 5 of 14

2188
2945-07-01-009



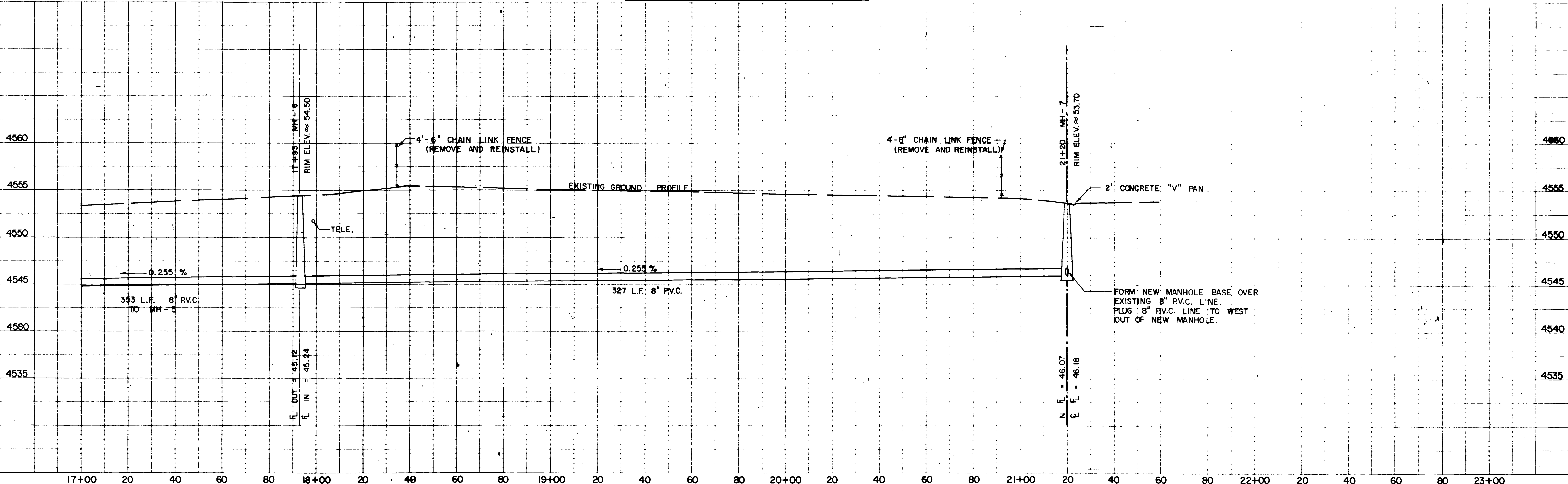
INFILTRATION CERTIFICATE
 THIS IS TO CERTIFY THAT BANNER ASSOCIATES, INC. REVIEWED THE SANITARY SEWER LINE EXTENSIONS - 1988 AND FOUND THAT THE GROUND WATER INFILTRATION DID NOT EXCEED THE MAXIMUM ALLOWABLE RATE AS DETAILED IN THE CITY OF GRAND JUNCTION CONSTRUCTION SPECIFICATIONS.



ASPHALT AREAS TO BE REMOVED AND REPLACED OR OVERLAYED

NOTE: GAS AND WATER SERVICES SHOWN ON PLAN VIEW ONLY

CONSTRUCTION DRAWINGS OF RECORD



Drawn By: _____
 APPROVED: _____
 DATE: _____ FOR _____

Checked By: _____
 REVIEWED: _____
 DATE: _____ FOR BANNER ASSOCIATES, INC.

BANNER

REVISION	DATE	DESCRIPTION	MADE	APPR.

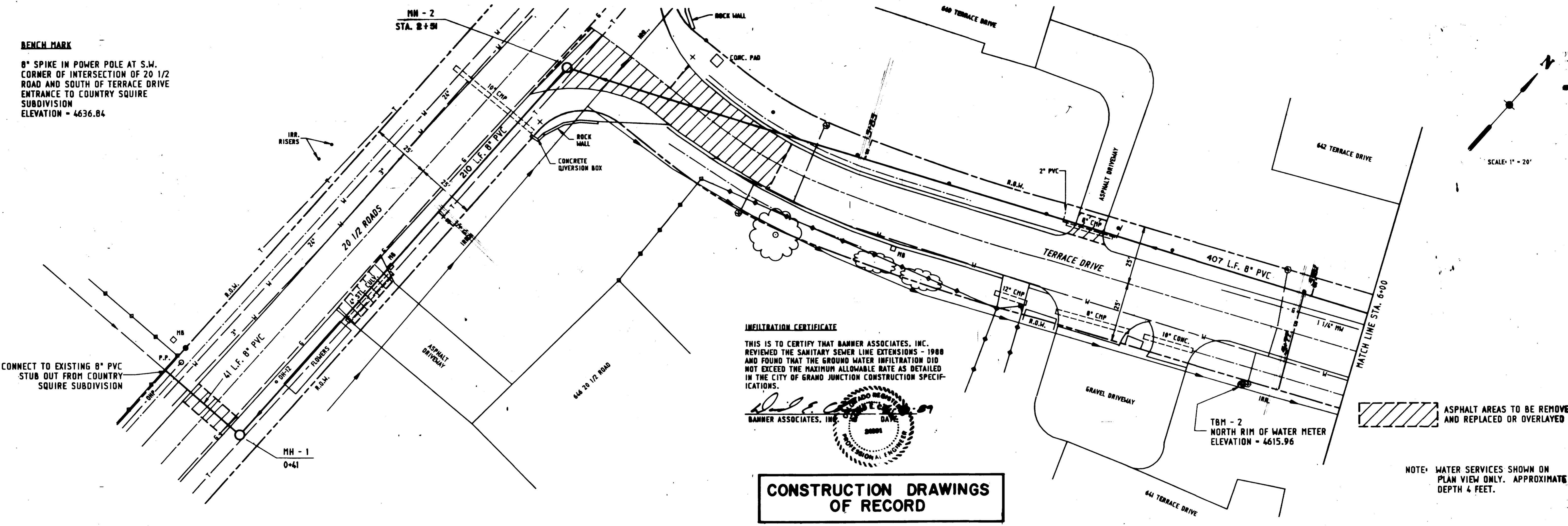
CITY OF GRAND JUNCTION DEPARTMENT OF PUBLIC WORKS AND UTILITIES
WEST MESA COURT / INDUSTRIAL BOULEVARD
 SANITARY SEWER SYSTEM EXTENSIONS - 1988

Scale: 1" = 20' HORIZ.
 1" = 5' VERT.
 Date: AUG., 1988

Project No. 8117-05 B
 Sheet No. 6 of 14

BENCH MARK

8" SPIKE IN POWER POLE AT S.W. CORNER OF INTERSECTION OF 20 1/2 ROAD AND SOUTH OF TERRACE DRIVE ENTRANCE TO COUNTRY SQUIRE SUBDIVISION
ELEVATION = 4636.84



INFILTRATION CERTIFICATE

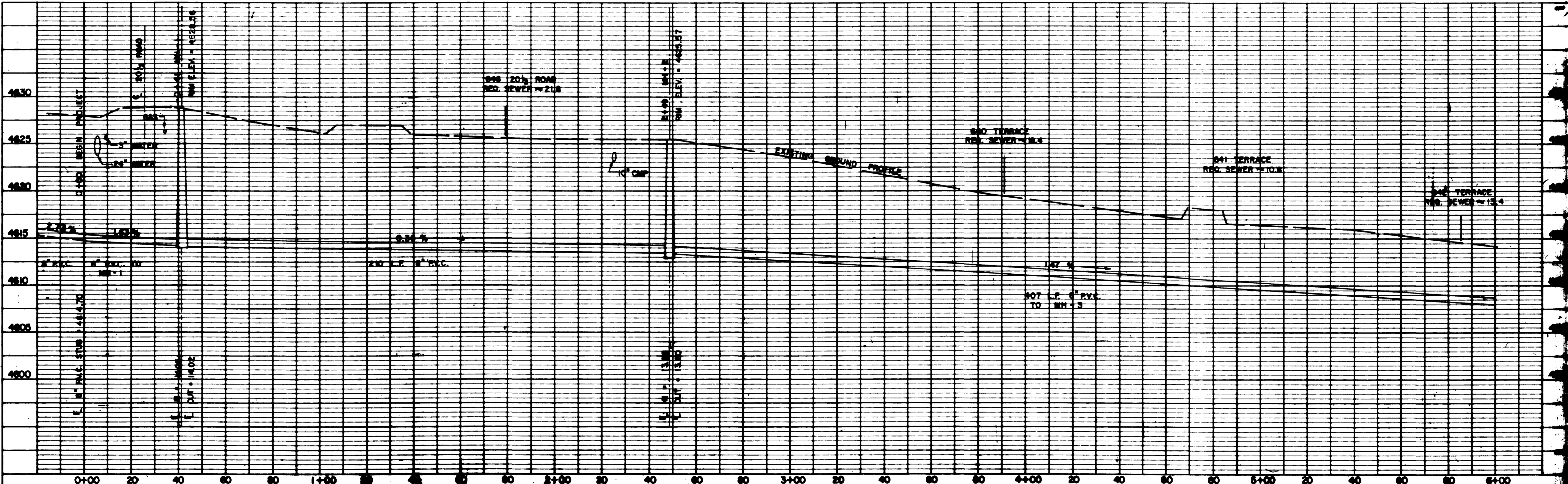
THIS IS TO CERTIFY THAT BANNER ASSOCIATES, INC. REVIEWED THE SANITARY SEWER LINE EXTENSIONS - 1988 AND FOUND THAT THE GROUND WATER INFILTRATION DID NOT EXCEED THE MAXIMUM ALLOWABLE RATE AS DETAILED IN THE CITY OF GRAND JUNCTION CONSTRUCTION SPECIFICATIONS.



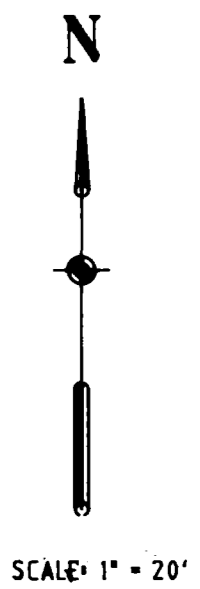
CONSTRUCTION DRAWINGS OF RECORD

ASPHALT AREAS TO BE REMOVED AND REPLACED OR OVERLAYED

NOTE: WATER SERVICES SHOWN ON PLAN VIEW ONLY. APPROXIMATE DEPTH 4 FEET.

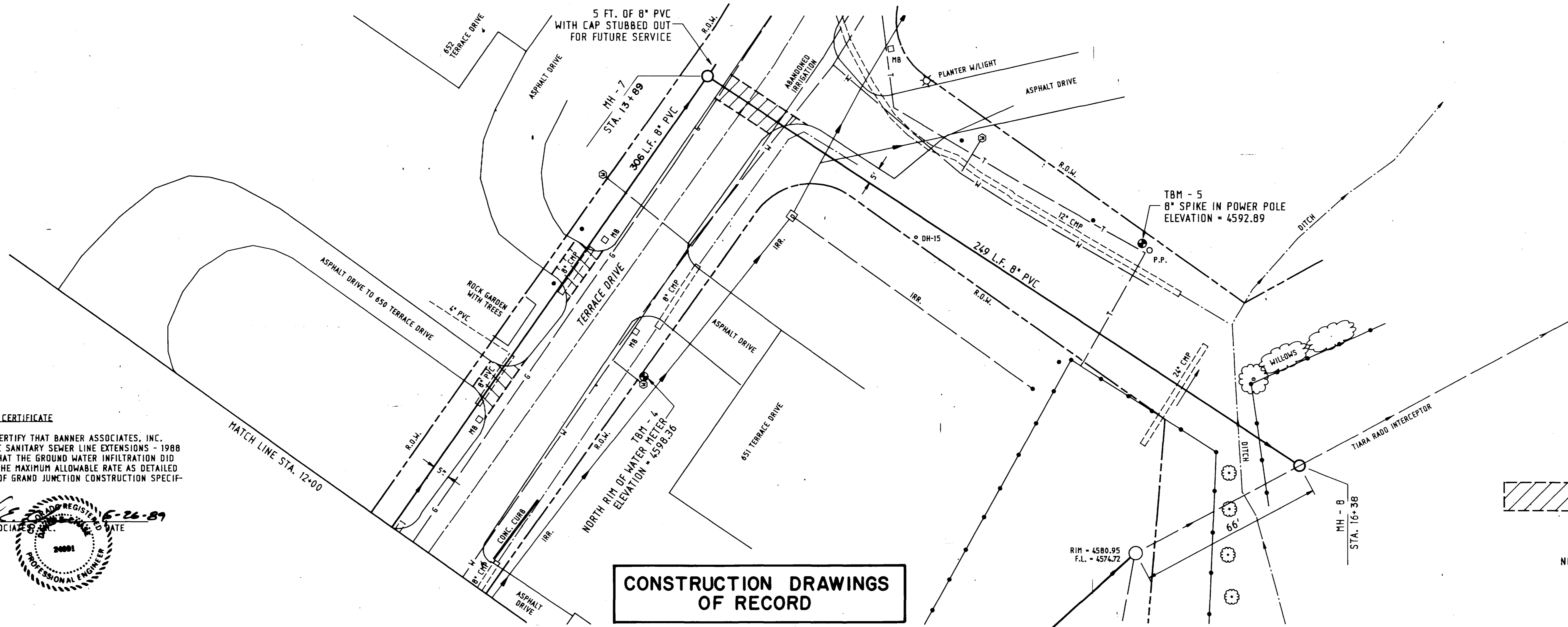


Drawn By: _____ Checked By: _____	APPROVED: _____ DATE: _____	REVIEWED: _____ DATE: _____	CITY OF GRAND JUNCTION DEPARTMENT OF PUBLIC WORKS AND UTILITIES	Scale: 1" = 20' HORIZ. 1" = 5' VERT. Date: AUG., 1988
COUNTRY SQUIRE SUBDIVISION OUTFALL SANITARY SEWER SYSTEM EXTENSIONS - 1988			7 of	



INFILTRATION CERTIFICATE
 THIS IS TO CERTIFY THAT BANNER ASSOCIATES, INC. REVIEWED THE SANITARY SEWER LINE EXTENSIONS - 1988 AND FOUND THAT THE GROUND WATER INFILTRATION DID NOT EXCEED THE MAXIMUM ALLOWABLE RATE AS DETAILED IN THE CITY OF GRAND JUNCTION CONSTRUCTION SPECIFICATIONS.

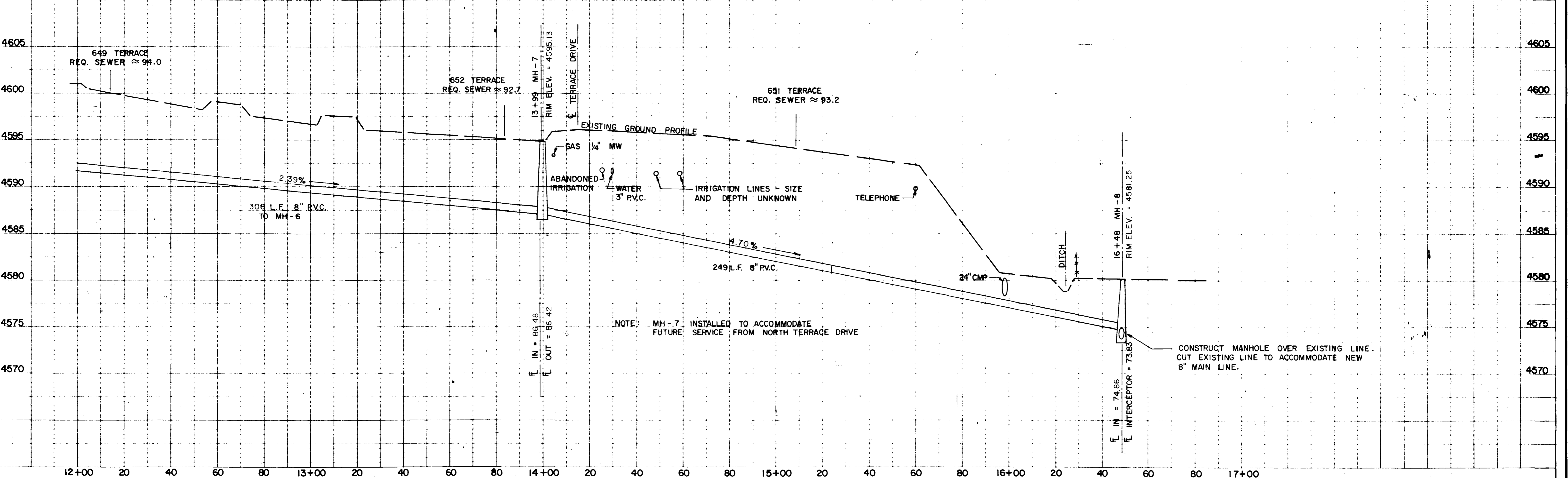
[Signature]
 BANNER ASSOCIATES, INC.
 REGISTERED PROFESSIONAL ENGINEER
 No. 24891
 STATE OF COLORADO
 EXPIRES 6-26-89



CONSTRUCTION DRAWINGS OF RECORD

ASPHALT AREAS TO BE REMOVED AND REPLACED OR OVERLAYED

NOTE: WATER SERVICES SHOWN ON PLAN VIEW ONLY. APPROXIMATE DEPTH 4 FEET.



Drawn By: _____
 APPROVED: _____
 DATE: _____ FOR _____

Checked By: _____
 REVIEWED: _____
 DATE: _____ FOR BANNER ASSOCIATES, INC.

BANNER
 ASSOCIATES, INC.
 CONSULTING ENGINEERS & ARCHITECTS
 2200 W. GRAND AVENUE, SUITE 200, GRAND JUNCTION, CO. 81502

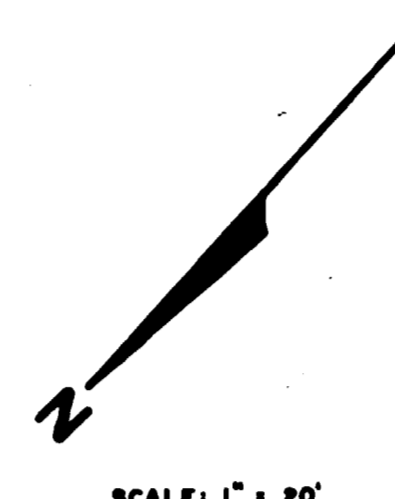
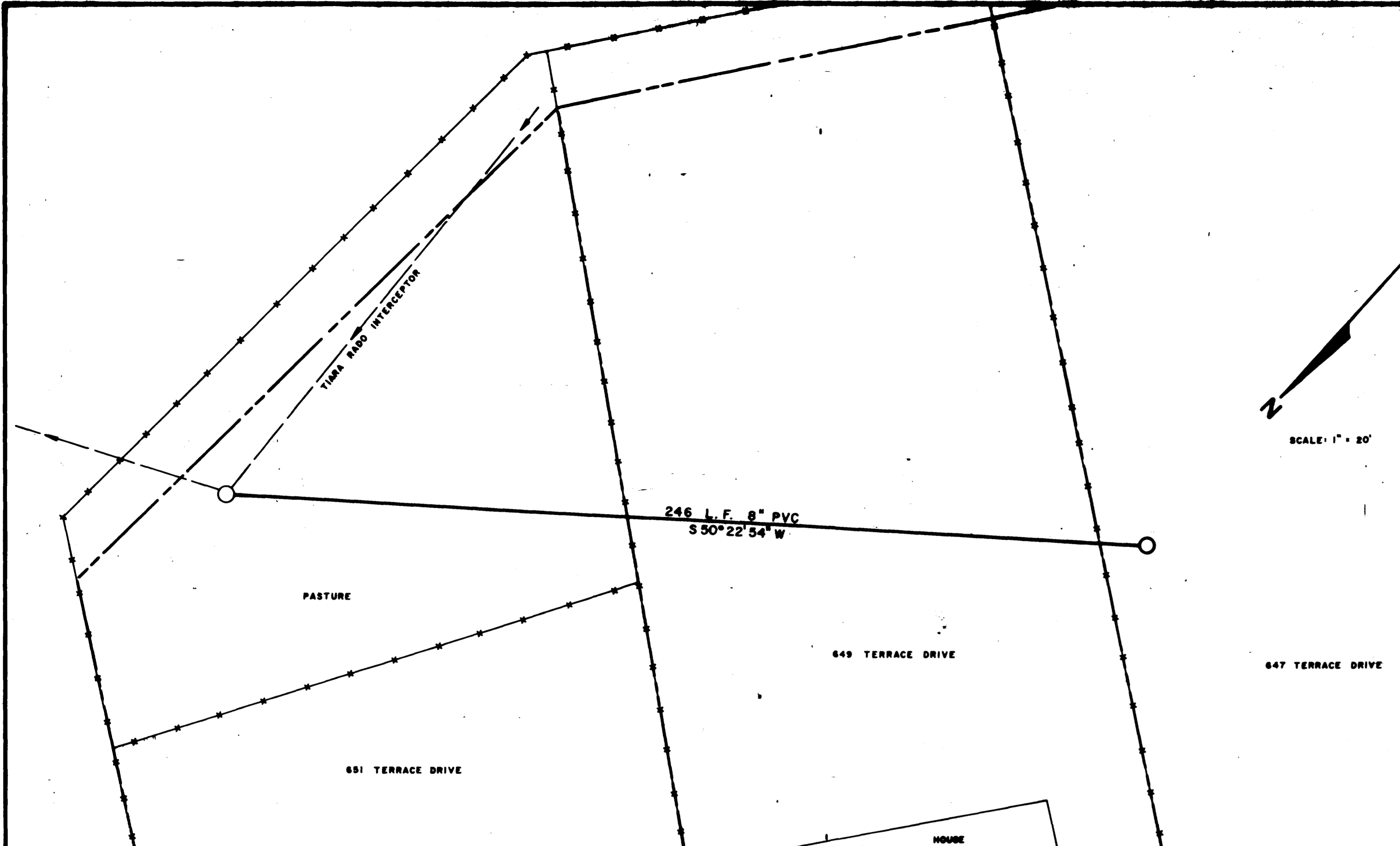
REVISION	DATE	DESCRIPTION	MADE	APPR.

CITY OF GRAND JUNCTION
 DEPARTMENT OF PUBLIC WORKS AND UTILITIES
 COUNTRY SQUIRE SUBDIVISION OUTFALL
 SANITARY SEWER SYSTEM EXTENSIONS - 1988

Scale: 1" = 20' HORIZ.
 1" = 5' VERT.
 Date: AUG, 1988
 Project No. 8117-05 C
 Sheet No. 9 of 14

NOTES:

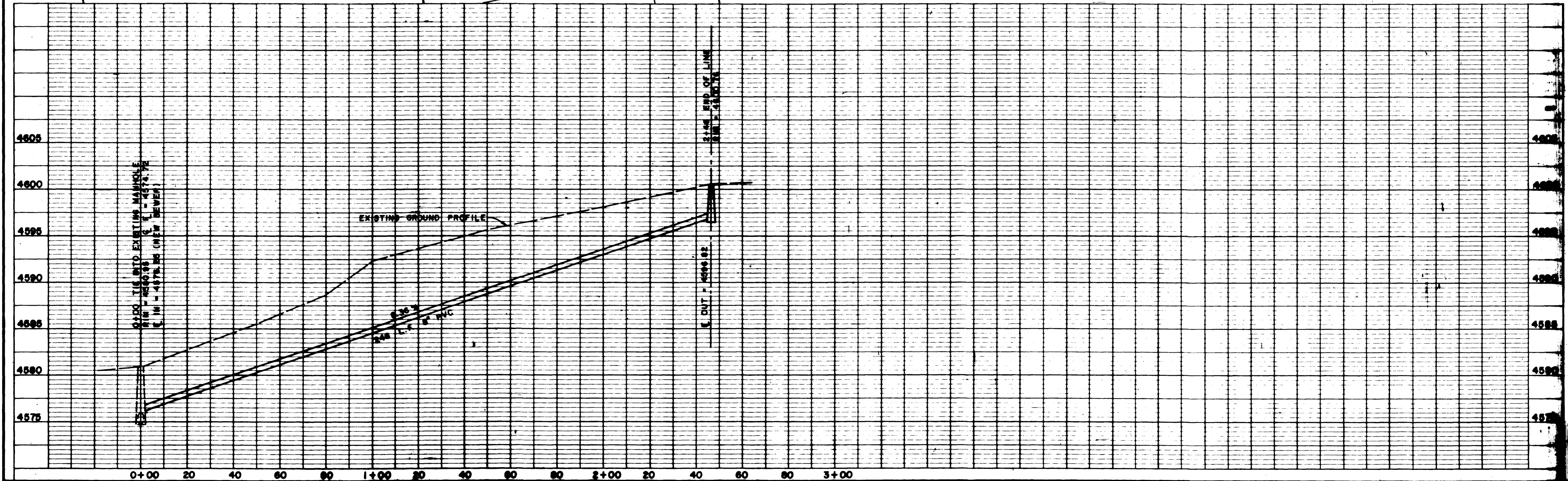
1. THERE ARE ADDITIONAL FENCES AND OUT BUILDINGS THAT ARE NOT SHOWN ON THIS DRAWING.
2. SEWER SERVICES NOT SHOWN.



CONSTRUCTION DRAWINGS
OF RECORD

INFILTRATION CERTIFICATE

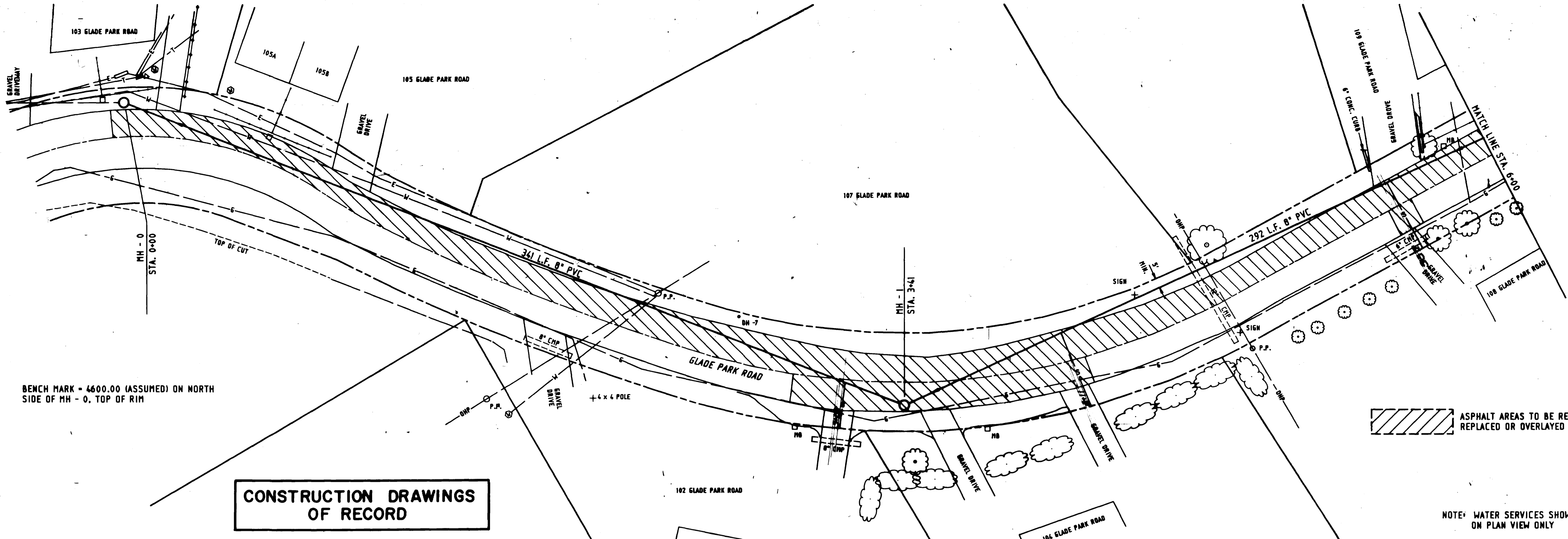
THIS IS TO CERTIFY THAT BANNER ASSOCIATES, INC. REVIEWED THE SANITARY SEWER LINE EXTENSIONS - 1988 AND FOUND THAT THE GROUND WATER INFILTRATION DID NOT EXCEED THE MAXIMUM ALLOWABLE RATE AS DETAILED IN THE CITY OF GRAND JUNCTION CONSTRUCTION SPECIFICATIONS.



Drawn By: R.L.C.
 Checked By: J.W.C.
 APPROVED: _____
 DATE: _____ FOR _____
 BANNER ASSOCIATES, INC.

REVISION	DATE	DESCRIPTION	MADE	APPR.

CITY OF GRAND JUNCTION DEPARTMENT OF PUBLIC WORKS AND UTILITIES
FOREST HILLS - ALTERNATE LINE
 Scale: 1" = 20' HORIZ. 1" = 5' VERT.
 Date: NOV. 1988
 Project No. 8117-
 Sheet No. 10 OF

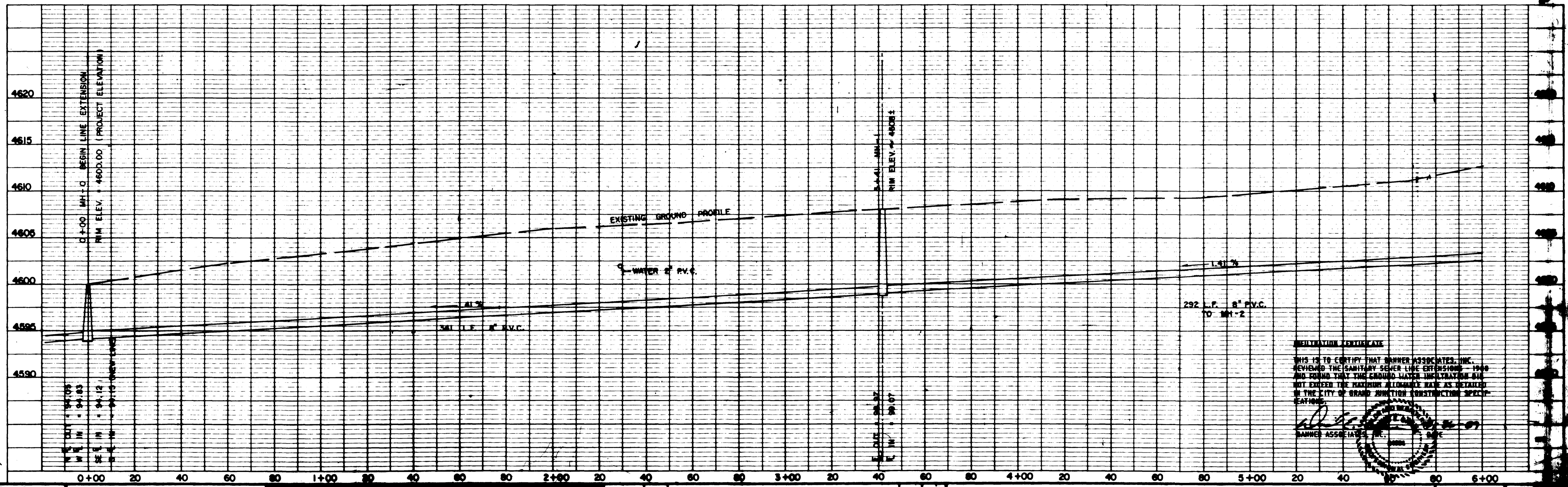


BENCH MARK = 4600.00 (ASSUMED) ON NORTH SIDE OF MH - 0, TOP OF RIM

CONSTRUCTION DRAWINGS OF RECORD

ASPHALT AREAS TO BE REMOVED AND REPLACED OR OVERLAYED

NOTE: WATER SERVICES SHOWN ON PLAN VIEW ONLY



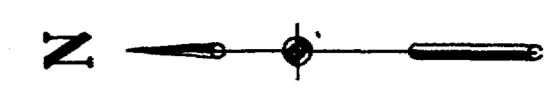
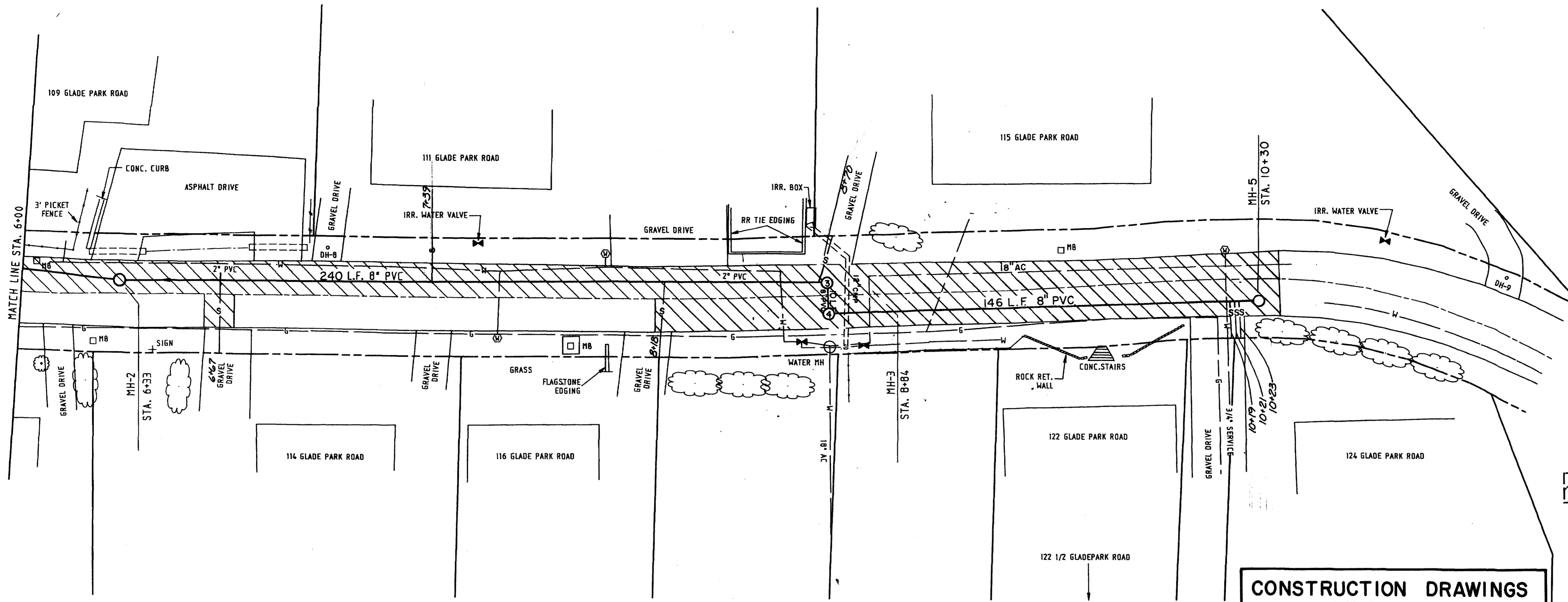
IMPERMEABLE CERTIFICATE
 THIS IS TO CERTIFY THAT BANNER ASSOCIATES, INC. REVIEWED THE SANITARY SEWER LINE EXTENSIONS - 1988 AND FOUND THAT THE GROUND WATER IMPLANTATION DID NOT EXCEED THE PERMITTED ALLOWABLE RATE AS SET FORTH IN THE CITY OF GRAND JUNCTION CONSTRUCTION SPECIFICATIONS.
 BANNER ASSOCIATES, INC.

Drawn By: _____
 Checked By: JWC
 Approved: _____
 Date: _____

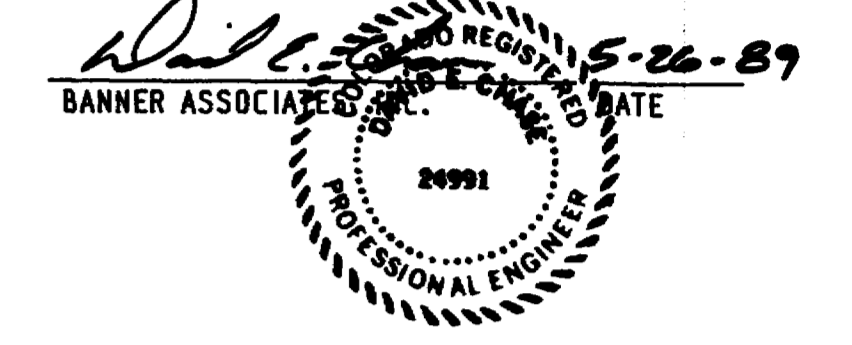
NO.	DATE	DESCRIPTION	BY	APP.

CITY OF GRAND JUNCTION
 DEPARTMENT OF PUBLIC WORKS AND UTILITIES
GLADE PARK ROAD
 SANITARY SEWER SYSTEM EXTENSIONS - 1988

Scale: 1" = 20' HORIZ.
 1" = 5' VERT.
 Date: AUG., 1988
 Sheet No. 11



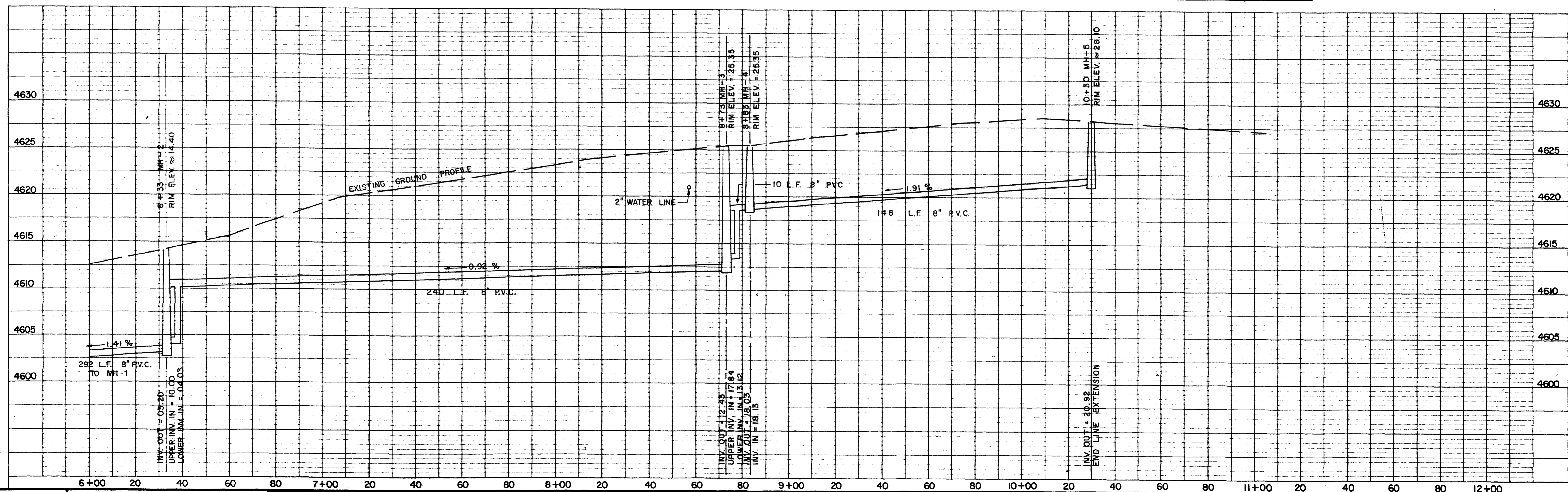
INFILTRATION CERTIFICATE
 THIS IS TO CERTIFY THAT BANNER ASSOCIATES, INC. REVIEWED THE SANITARY SEWER LINE EXTENSIONS - 1988 AND FOUND THAT THE GROUND WATER INFILTRATION DID NOT EXCEED THE MAXIMUM ALLOWABLE RATE AS SPECIFIED IN THE CITY OF GRAND JUNCTION CONSTRUCTION SPECIFICATIONS.



ASPHALT AREAS TO BE REMOVED AND REPLACED OR OVERLAYED

CONSTRUCTION DRAWINGS OF RECORD

NOTE: WATER SERVICES SHOWN ON PLAN VIEW ONLY



Drawn By: _____
 APPROVED: _____
 DATE: _____ FOR: _____

Checked By: _____
 REVIEWED: _____
 DATE: _____ FOR BANNER ASSOCIATES, INC.

BANNER
 BANNER ASSOCIATES, INC. • CONSULTING ENGINEERS & ARCHITECTS
 2777 CROSSROADS BOULEVARD • GRAND JUNCTION, CO 81501 • (303) 243-2242

REVISION	DATE	DESCRIPTION	MADE	APPR.

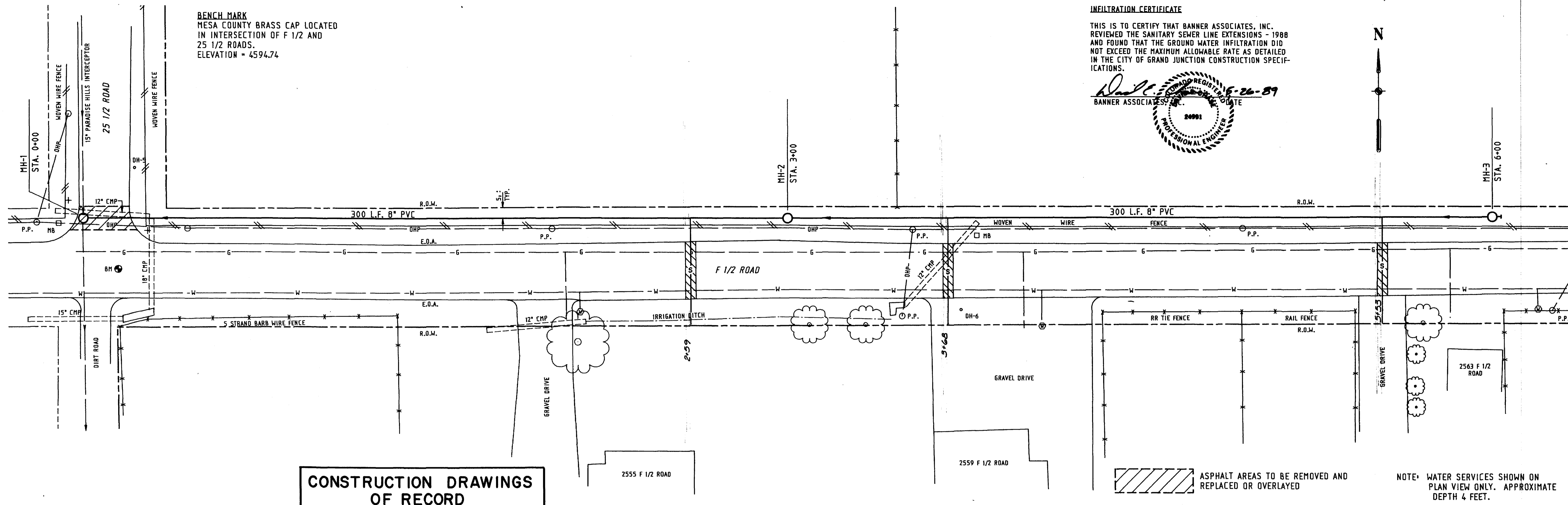
CITY OF GRAND JUNCTION
 DEPARTMENT OF PUBLIC WORKS AND UTILITIES
GLADE PARK ROAD
 SANITARY SEWER SYSTEM EXTENSIONS - 1988

Scale: 1" = 20' HORIZ.
 1" = 5' VERT.
 Date: AUG., 1988
 Project No. 8117-05 D
 Sheet No. 12 of 14

BENCH MARK
 MESA COUNTY BRASS CAP LOCATED
 IN INTERSECTION OF F 1/2 AND
 25 1/2 ROADS.
 ELEVATION = 4594.74

INFILTRATION CERTIFICATE

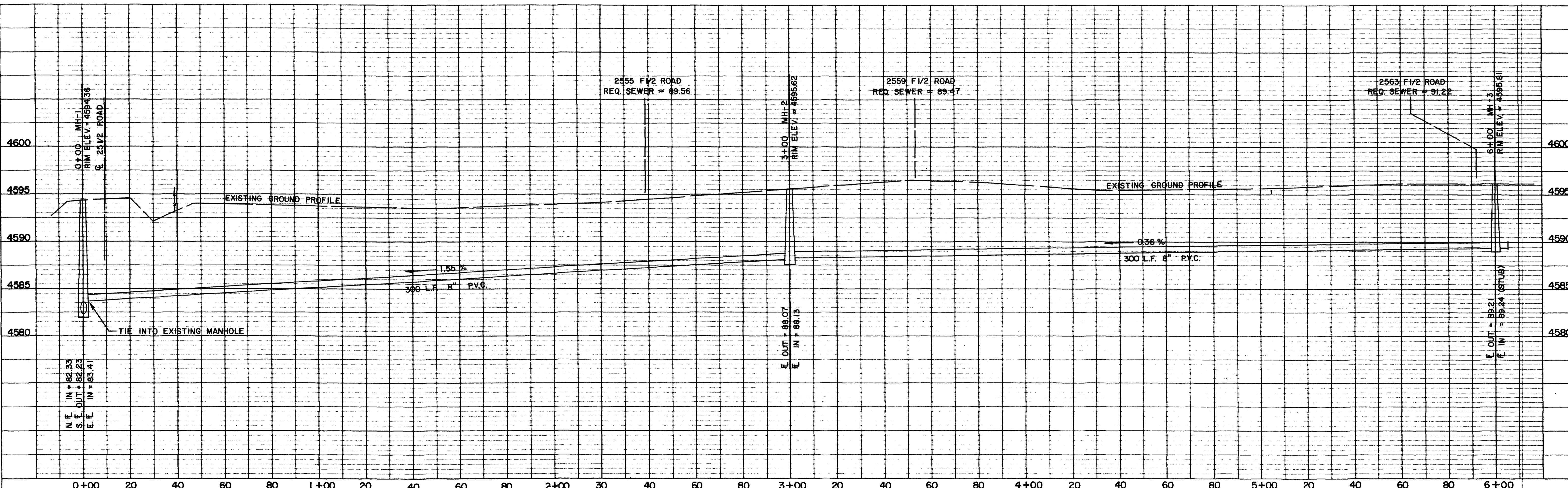
THIS IS TO CERTIFY THAT BANNER ASSOCIATES, INC. REVIEWED THE SANITARY SEWER LINE EXTENSIONS - 1988 AND FOUND THAT THE GROUND WATER INFILTRATION DID NOT EXCEED THE MAXIMUM ALLOWABLE RATE AS DETAILED IN THE CITY OF GRAND JUNCTION CONSTRUCTION SPECIFICATIONS.



**CONSTRUCTION DRAWINGS
 OF RECORD**

ASPHALT AREAS TO BE REMOVED AND REPLACED OR OVERLAYED

NOTE: WATER SERVICES SHOWN ON PLAN VIEW ONLY. APPROXIMATE DEPTH 4 FEET.



Drawn By: _____
 APPROVED: _____
 DATE: _____ FOR: _____

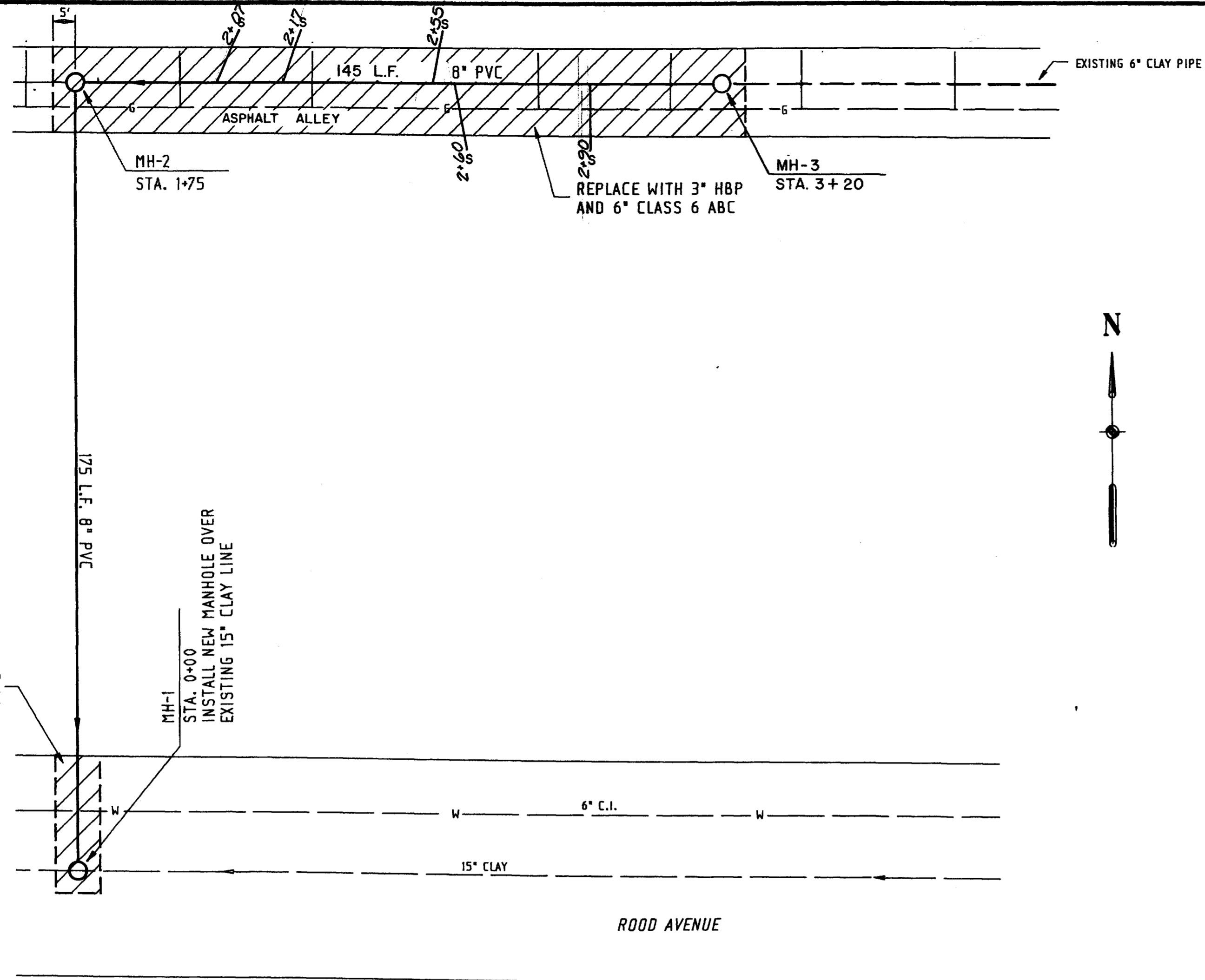
Checked By: _____
 REVIEWED: _____
 DATE: _____ FOR BANNER ASSOCIATES, INC.

BANNER
 BANNER ASSOCIATES, INC. • CONSULTING ENGINEERS & ARCHITECTS
 2777 CROSSROADS BOULEVARD • GRAND JUNCTION, CO 81501 • (303) 243-2242

REVISION	DATE	DESCRIPTION	MADE	APPR.

CITY OF GRAND JUNCTION DEPARTMENT OF PUBLIC WORKS AND UTILITIES
F 1/2 ROAD / 25 1/2 ROAD SERVICE AREA
 SANITARY SEWER SYSTEM EXTENSIONS - 1988

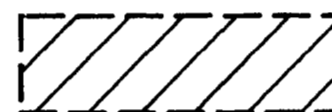
Scale: 1" = 20' HORIZ.
 1" = 5' VERT.
 Date: AUG., 1988
 Project No. 8117-05 E
 Sheet No. 13 of 14

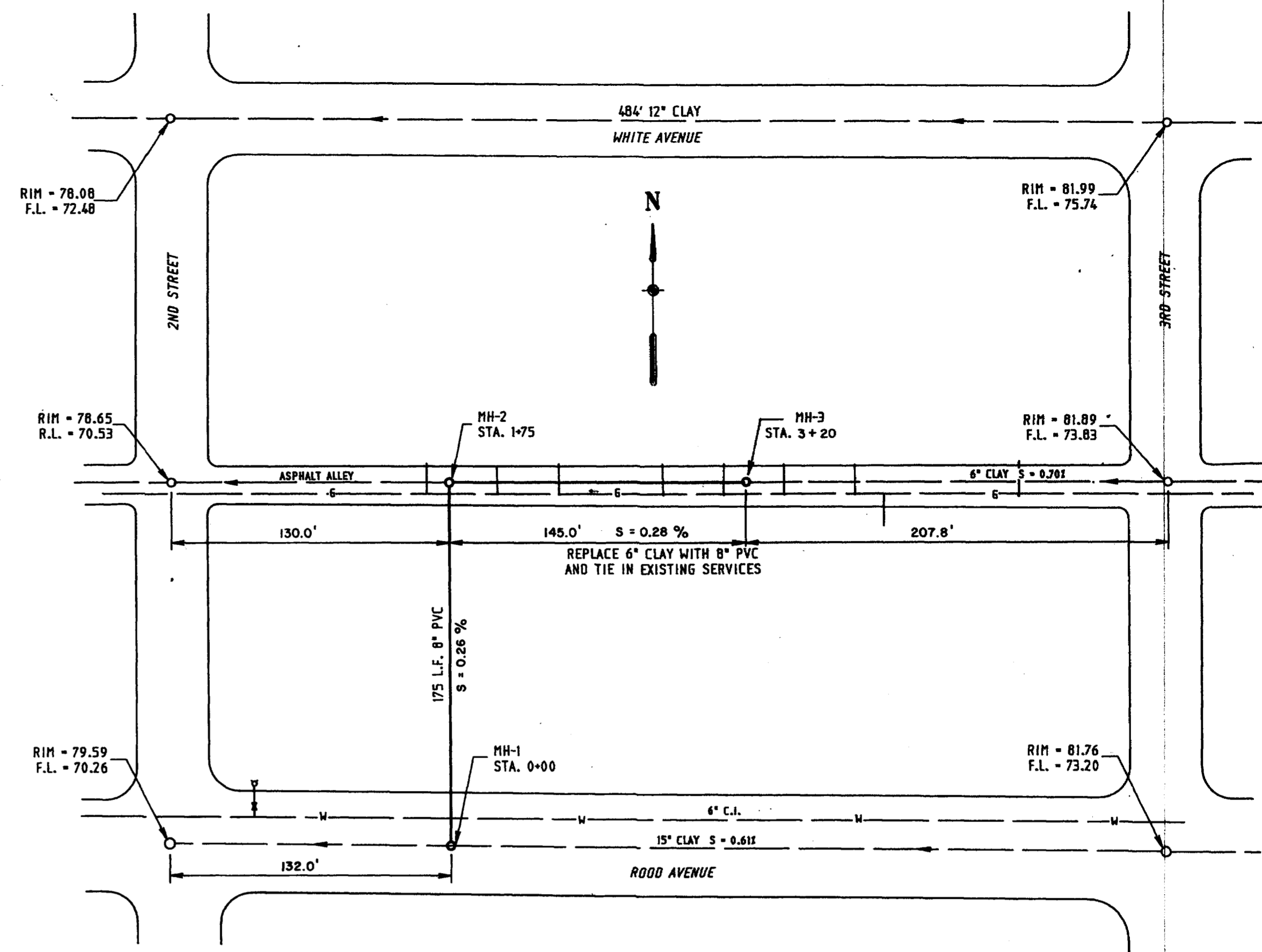


INFILTRATION CERTIFICATE

THIS IS TO CERTIFY THAT BANNER ASSOCIATES, INC. REVIEWED THE SANITARY SEWER LINE EXTENSIONS - 1988 AND FOUND THAT THE GROUND WATER INFILTRATION DID NOT EXCEED THE MAXIMUM ALLOWABLE RATE AS DETAILED IN THE CITY OF GRAND JUNCTION CONSTRUCTION SPECIFICATIONS.



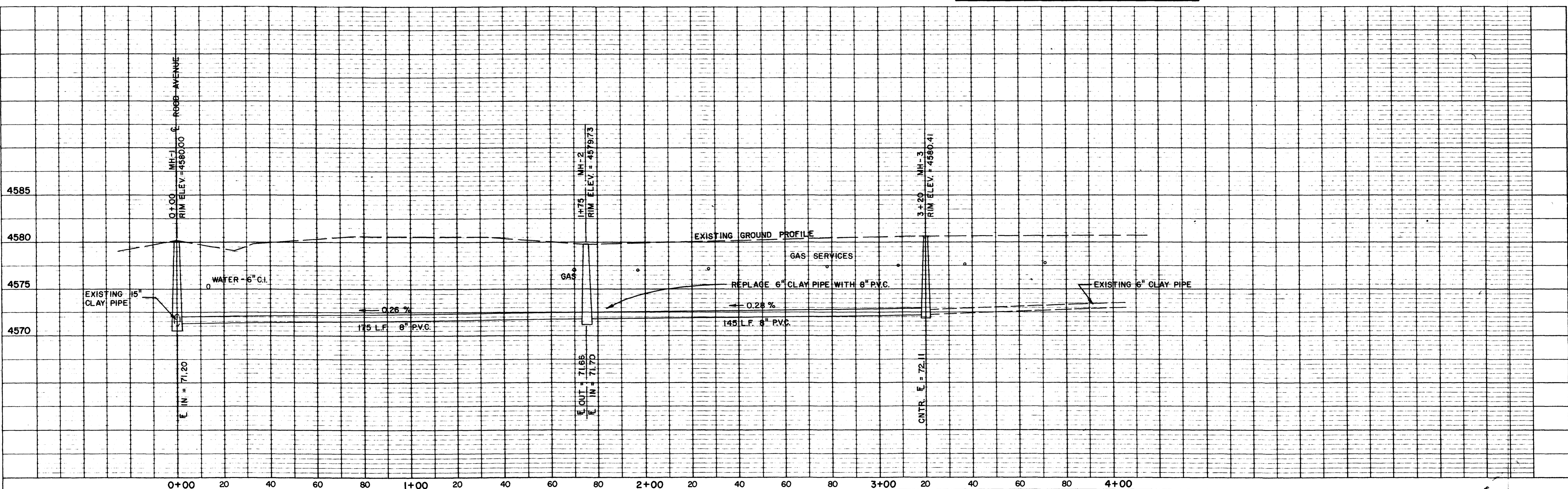
 ASPHALT AREAS TO BE REMOVED AND REPLACED OR OVERLAYED



CONSTRUCTION DRAWINGS OF RECORD

VICINITY MAP
SCALE: 1" = 50'

NOTE: WATER SERVICES SHOWN ON PLAN VIEW ONLY



Drawn By: _____
 APPROVED: _____
 DATE: _____ FOR _____

Checked By: _____
 REVIEWED: _____
 DATE: _____ FOR BANNER ASSOCIATES, INC.

BANNER
 BANNER ASSOCIATES, INC. • CONSULTING ENGINEERS & ARCHITECTS
 2777 CROSSROADS BOULEVARD • GRAND JUNCTION, CO 81501 • (303) 243-2242

REVISION	DATE	DESCRIPTION	MADE	APPR.

CITY OF GRAND JUNCTION
 DEPARTMENT OF PUBLIC WORKS AND UTILITIES
CITY MARKET AT 2nd ST. & ROOD AVE.
 SANITARY SEWER SYSTEM EXTENSIONS - 1988

Scale: 1" = 20' HORIZ.
 1" = 5' VERT.
 Date: AUG., 1988
 Project No. 8117-05 F
 Sheet No. 14 of 14