

- LEGEND**
- ▲ THRUST BLOCK
 - GATE VALVE
 - SEWER MANHOLE
 - SEWER LINE
 - WATER LINE
 - WATER METER
 - FIRE HYDRANT

BENCH E 1/4 CORNER, SECTION 35, T1N, R1W, UTE MERIDIAN

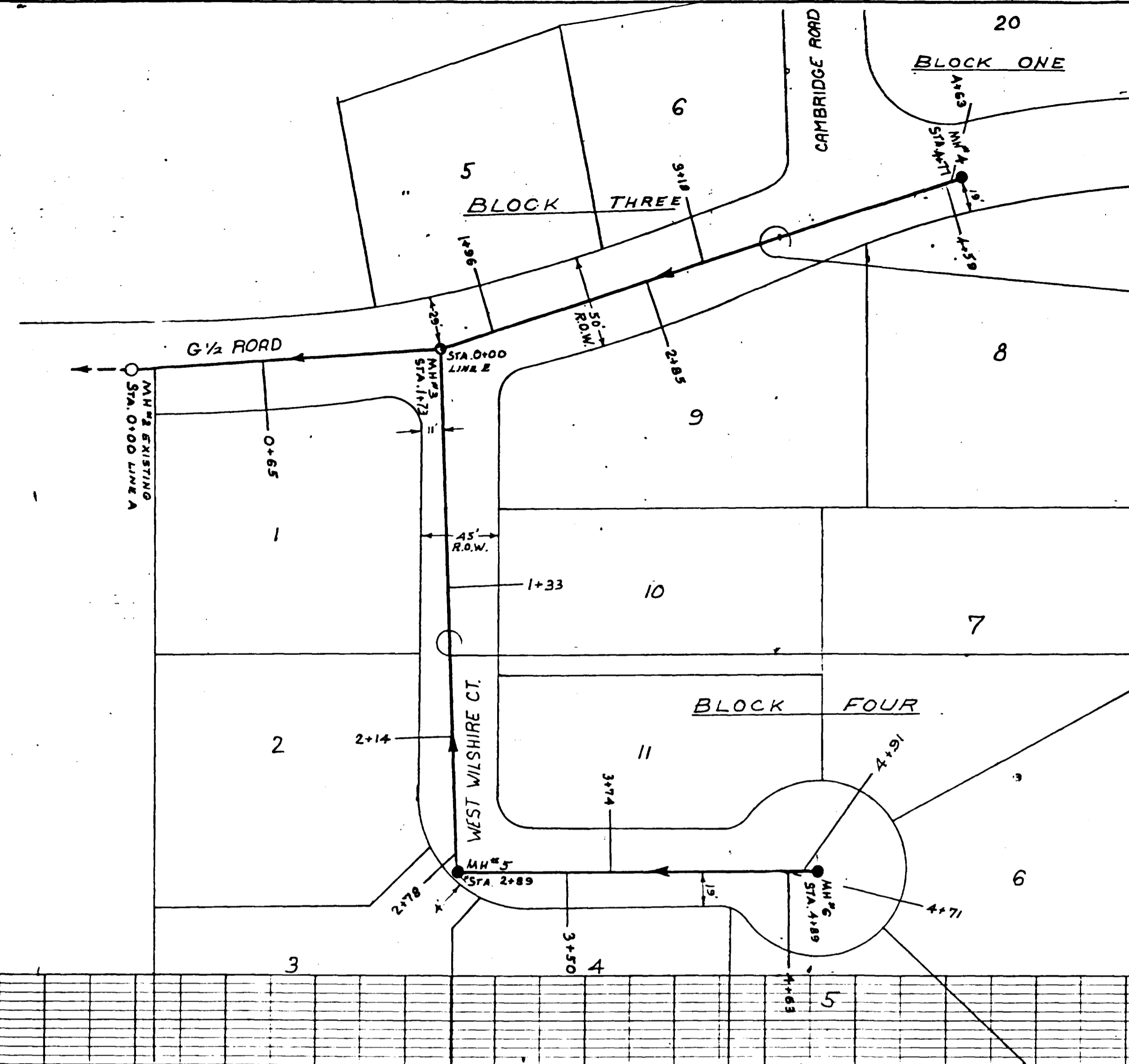
SEWER NOTES

- 1) PIPE SPECIFICATIONS: MAINS - PVC-ASTM D 3034-SDR 35 OR TRUSS-ASTM D 2600
LATERALS- PVC-ASTM D 3034-SDR 35 OR ABS-ASTM D 2757 SDR 35.
- 2) CARRY LATERALS INSIDE LOT LINES 10 FEET
- 3) SEWER LINES SHALL BE LOCATED A MINIMUM OF 10' HORIZONTALLY AND 18' VERTICALLY FROM ALL WATER LINES AT CROSSINGS WITH LESS THAN 18" VERTICAL SPACING. A SINGLE LENGTH OF PIPE, 8' MINIMUM, SHALL BE CENTERED AT THE CROSSING. THE CROSSING SHALL BE ENCASED IN A 6" COLLAR AND EXTENDING 12" BEYOND THE DIAMETER OF THE WATER PIPE ON BOTH SIDES.
- 4) LEAVE RIM ELEVATIONS 3' BELOW FINISH GRADE - ROAD CONTRACTOR TO BRING RIMS TO GRADE AFTER PAVING.
- 5) MARK ENDS OF LATERALS WITH STANDARD 92 5/8" x 2" x 4" STUD SET WITH BOTTOM EVEN WITH LATERAL END -- PAINT TOP OF STUD FLOURESCENT YELLOW 1" MIN. FROM TOP.
- 6) 3' MINIMUM COVER.

WATER NOTES

- 1) ALL CONSTRUCTION, INSTALLATION, DISINFECTION AND PRESSURE TESTS SHALL COMPLY WITH UTE WATER MATERIALS AND INSTALLATION SPECIFICATIONS, AND A.W.W.A. STANDARDS
- 2) CARRY ALL WATER LATERALS 5' INSIDE PROPERTY LINES
- 3) MARK ENDS OF ALL LATERALS WITH STANDARD 92 5/8" x 2" x 4" STUD SET WITH BOTTOM END EVEN WITH LATERAL END -- PAINT TOP OF STUD FLOURESCENT ORANGE 1" MIN. FROM TOP.
- 4) ALL 6" & 8" LINES ARE TO BE CLASS 150 RC PIPE -- ALL 2' & 3" LINES ARE TO BE 9DR 21 (ccl 200) P.V.C. SOLVENT WELD PIPE.
- 5) 4' MINIMUM COVER.

REV#	DATE	BY	ADD FIRE HYDRANT AT CENTAURI & G 1/2 RD. AS PER REQUEST	APPROVED
2	6-2-83	L.S.		
DATE:	REVISED FIRE HYDRANTS TO MESA COUNTY FIRE SPECS		LIMIT:	
5/14/83			R.S.C.	
CAMBRIDGE				
SEWER & WATER PLAN				
FOR	STETTNER, IVEY, CORBETT		SURVEYED BY:	
SCALE	HORIZONTAL 1" = 50'		DRAWN BY:	B.C.
	VERTICAL 1" = 50'		APPROVED BY:	R.S.C.
DATE	4-14-83		SHEET NO:	10/15
			FILE NO:	82-12-04

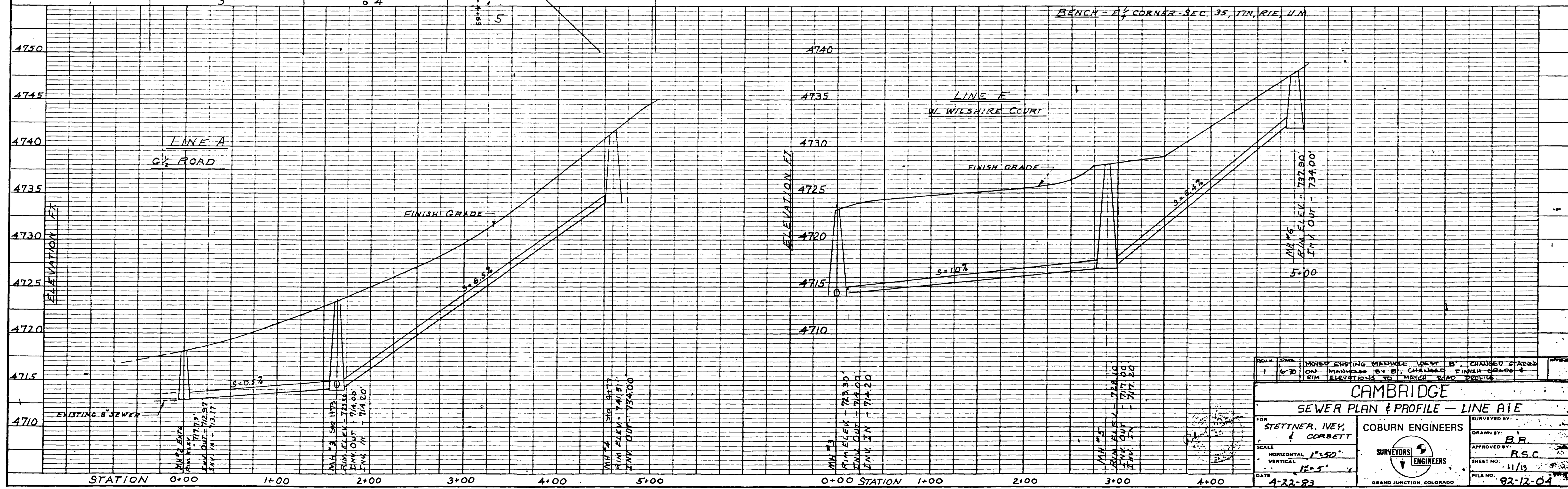


NOTES:

1. SEE SEWER & WATER PLAN, SHEET FOR CONTROL NOTES.
2. DIMENSIONS LOCATING MANHOLES ARE TO CENTER OF MANHOLE.

SEWER SERVICE LOCATIONS MAY NOT BE ACCURATE. THIS IS NOT AN AS-BUILT DRAWING. 4-18-10

NORTH
SCALE 1"=50'



REV #	DATE	DESCRIPTION
1	6-30	Moved existing manhole west by 5'. Changed stationing on manholes by 5'. Changed finish grade & rim elevations to match 2000 profile.

CAMBRIDGE
SEWER PLAN & PROFILE - LINE A/E

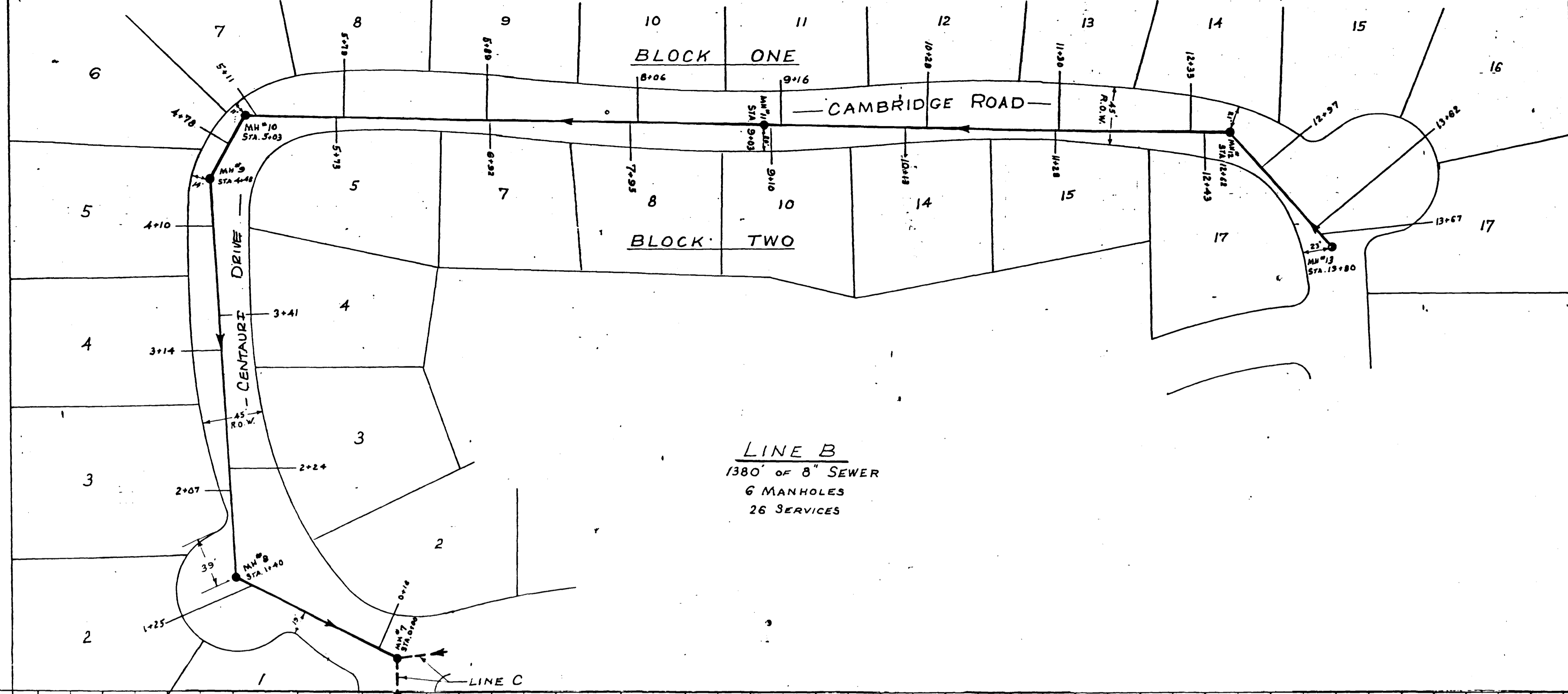
FOR STETTNER, IVEY, & CORBETT

SCALE: HORIZONTAL 1"=50', VERTICAL 1"=5'

DATE: 4-22-83

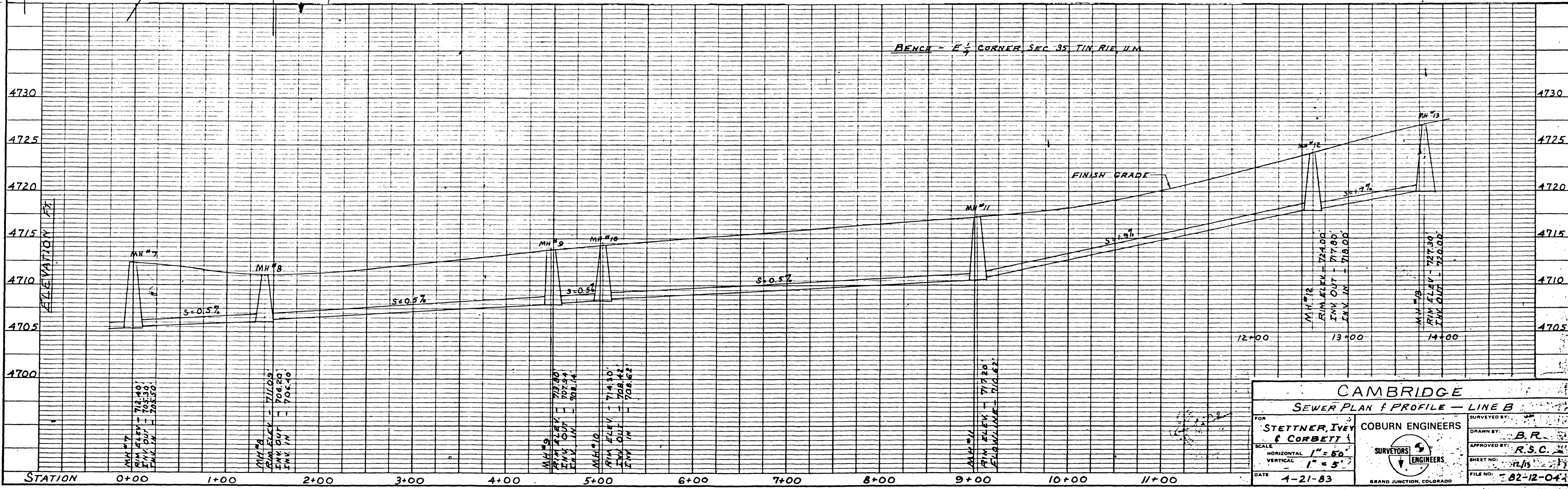
CORBURN ENGINEERS
SURVEYORS & ENGINEERS
GRAND JUNCTION, COLORADO

SURVEYED BY: B.B.
APPROVED BY: R.S.C.
SHEET NO: 11/13
FILE NO: 82-12-04



- NOTES:**
1. SEE SEWER & WATER PLAN, SHEET FOR CONTROL NOTES
 2. DIMENSIONS LOCATING MANHOLES ARE TO CENTER OF MANHOLE

LINE B
 1380' OF 8" SEWER
 6 MANHOLES
 26 SERVICES



CAMBRIDGE

SEWER PLAN & PROFILE - LINE B

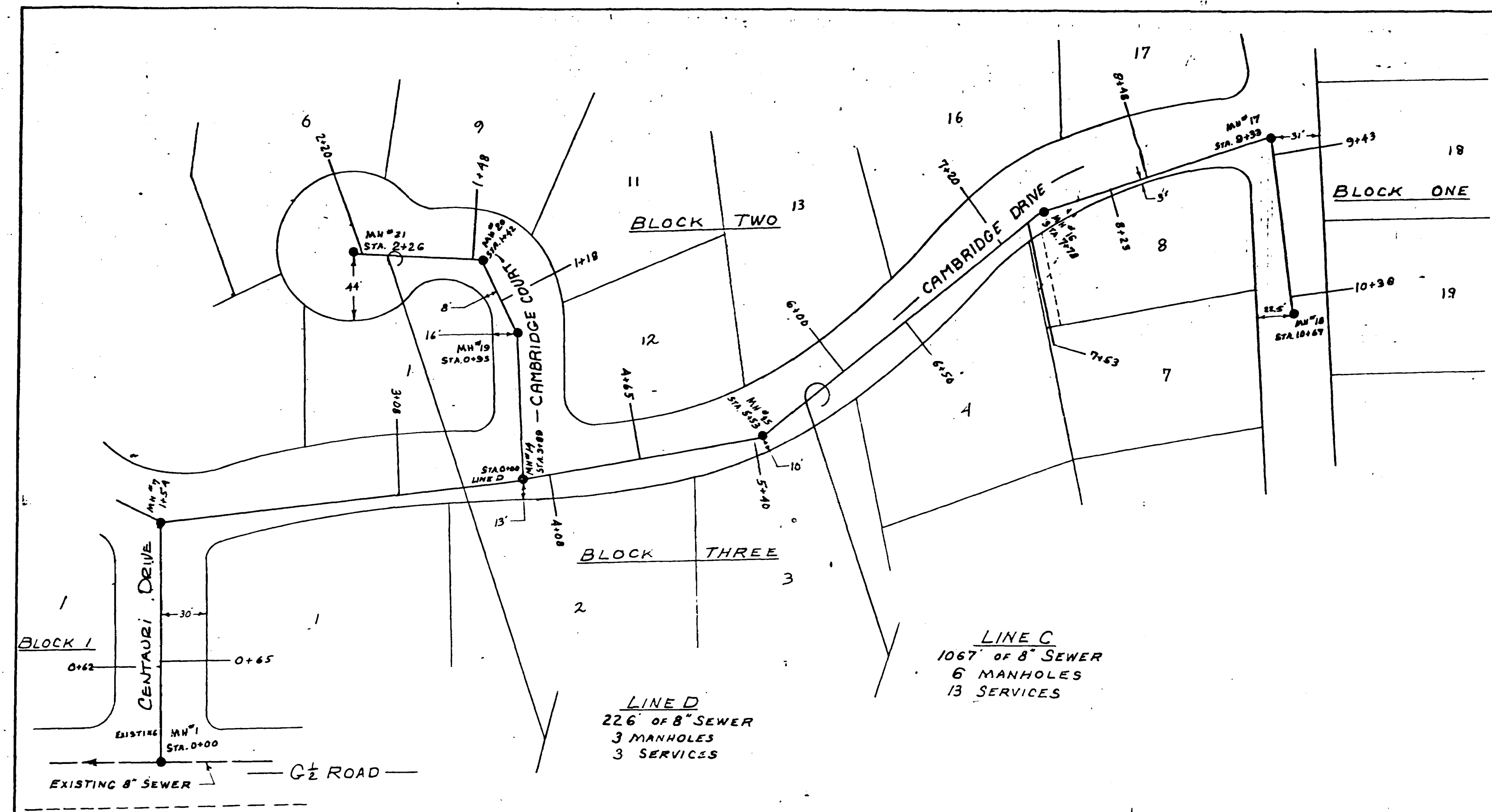
FOR **STETTNER, IVEY & CORBETT** ENGINEERS

SCALE: HORIZONTAL 1" = 50', VERTICAL 1" = 5'

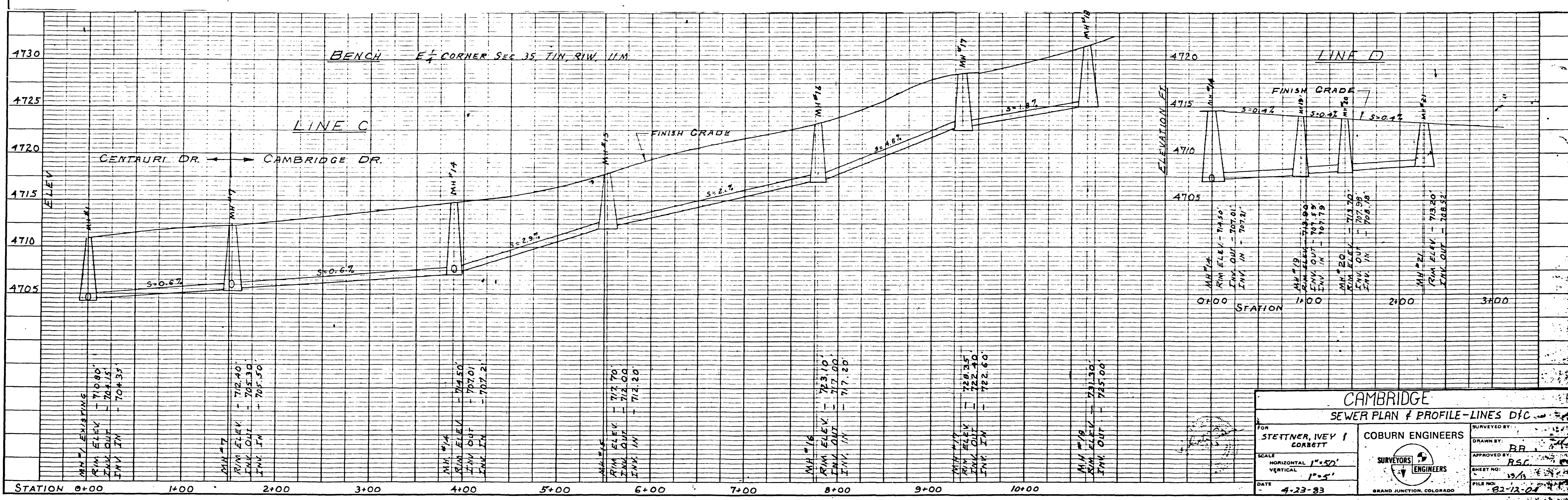
DATE: 4-21-83

GRAND JUNCTION, COLORADO

FILE NO: 82-12-04



NOTES:
1. SEE SEWER & WATER PLAN, SHEET FOR CONTROL NOTES
2. DIMENSIONS LOCATING MANHOLES ARE TO CENTER OF MANHOLE



CAMBRIDGE
SEWER PLAN & PROFILE - LINES C & D

FOR STETTNER, IVEY & CORBETT

SCALE: HORIZONTAL 1"=50', VERTICAL 1"=5'

DATE: 4-23-33

CORBURN ENGINEERS
SURVEYORS & ENGINEERS
GRAND JUNCTION, COLORADO

APPROVED BY: RSC
DATE: 12/13

FILE NO: 82-12-04

PROJECT RECORD DRAWING

CONTRACTOR'S CERTIFICATE

This is to certify that the sewer lines and related appurtenances were installed in accordance with this design and City of Grand Junction Specifications.

Allen P. Long
Ivey Excavation, Inc.

Date

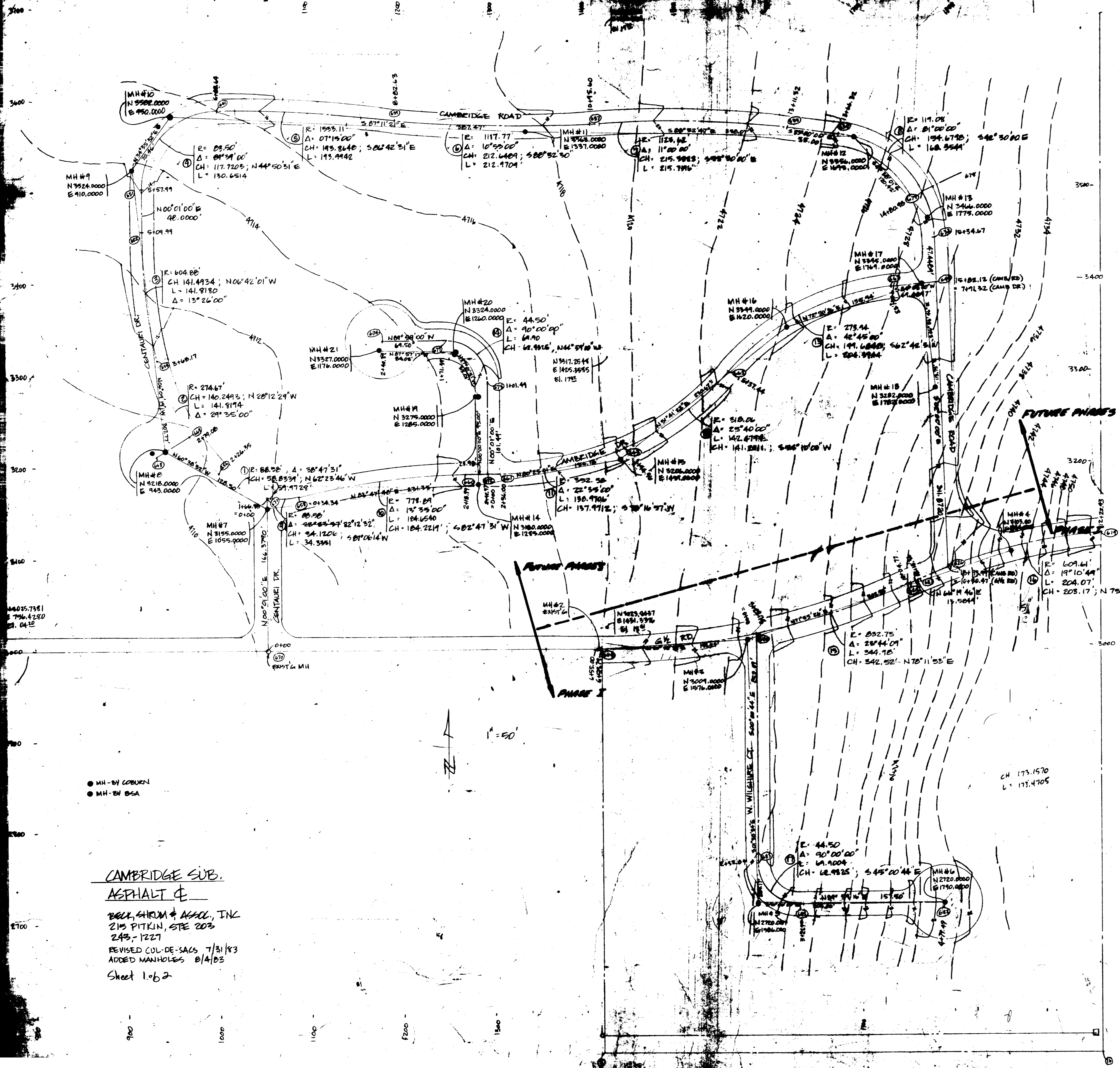
~~**SURVEYOR'S CERTIFICATE**~~

~~This is to certify that the sewer lines and related appurtenances were surveyed and found to be at the grades, elevations and locations shown.~~

~~Surveyor~~

~~Date~~

~~Seal & No.~~



- MH - BY COBURN
- MH - BY BSA

CAMBRIDGE SUB.
ASPHALT &
BECK, SHUM & ASSOC., INC.
215 PITKIN, STE 203
243-1227
REVISED CUL-DE-SACS 7/31/83
ADDED MANHOLES 8/14/83
Sheet 1 of 2

Phase I Accepted 10-25-1985



AN UNLTD DRAWING - PH. I
Prepared By Robert P. Gerlofs

02-138 - SEE THIS NO.
FOR TAP LOCATIONS.

01-844-01-AS

SHEET 1 of 2

PROJECT RECORD DRAWING

CONTRACTORS CERTIFICATE

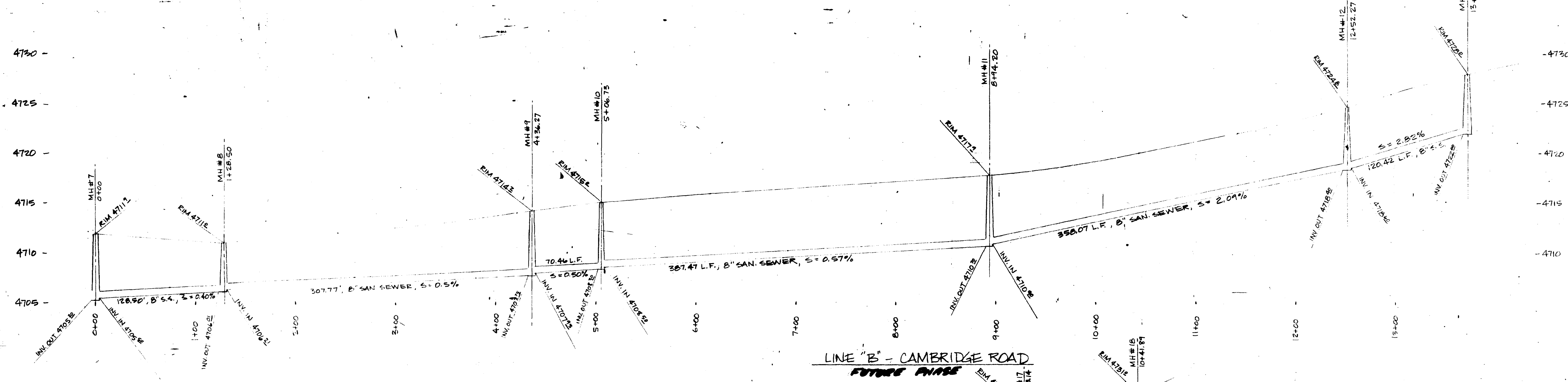
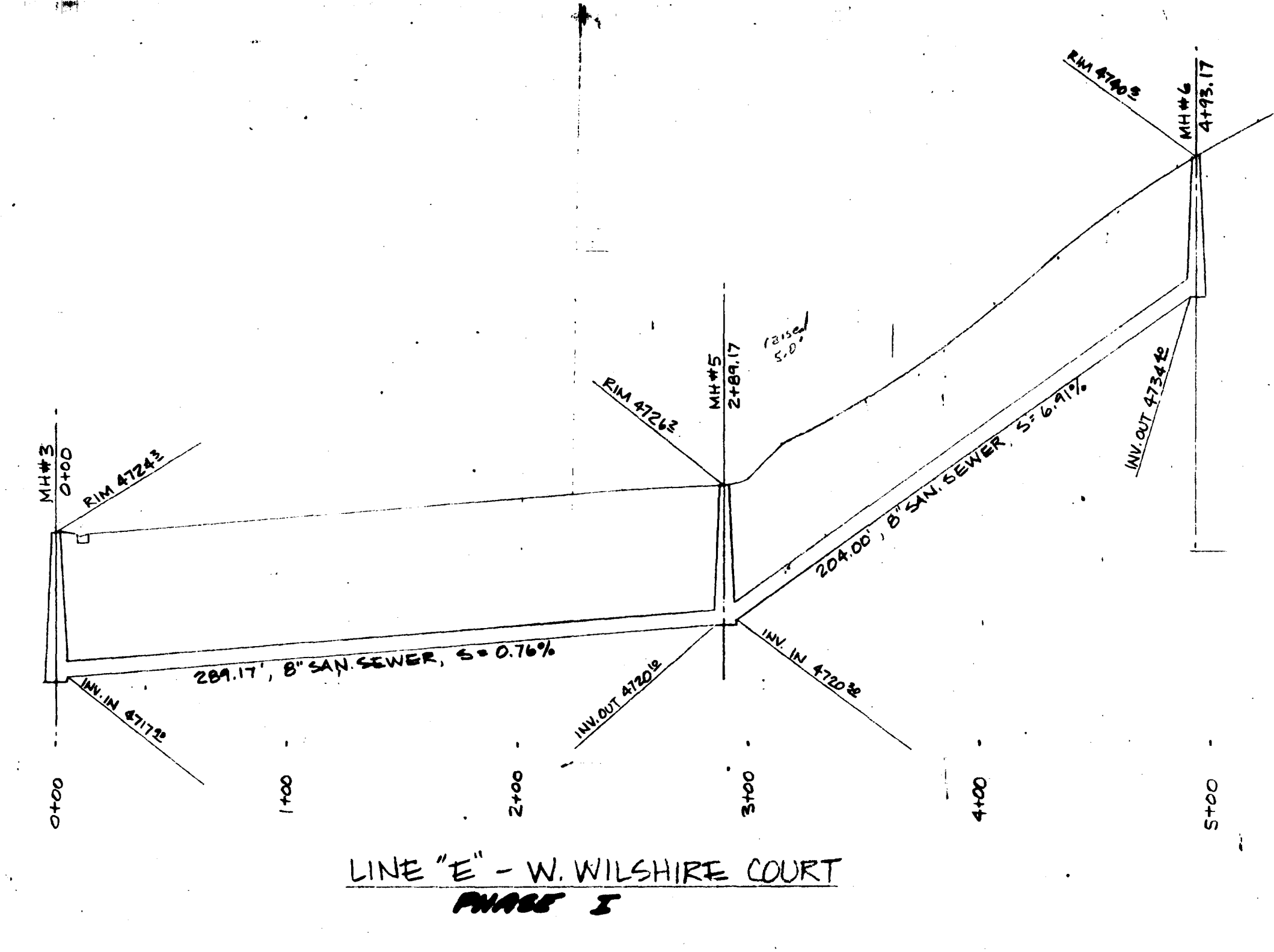
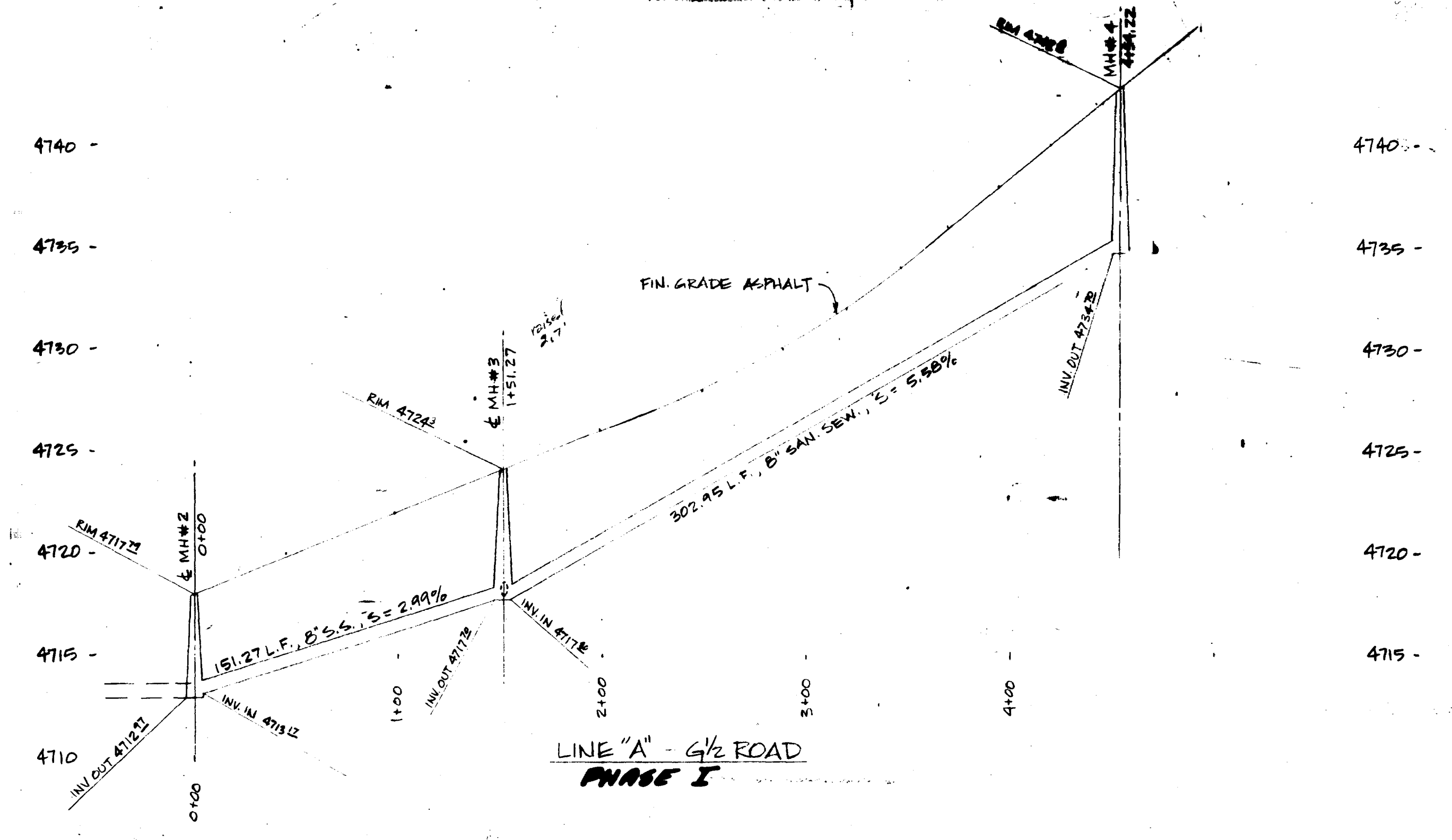
This is to certify that the sewer lines and related appurtenances were installed in accordance with this design, and City of Grand Junction Specifications.

Allen S. Ivey
Ivey Excavation, Inc. Date _____

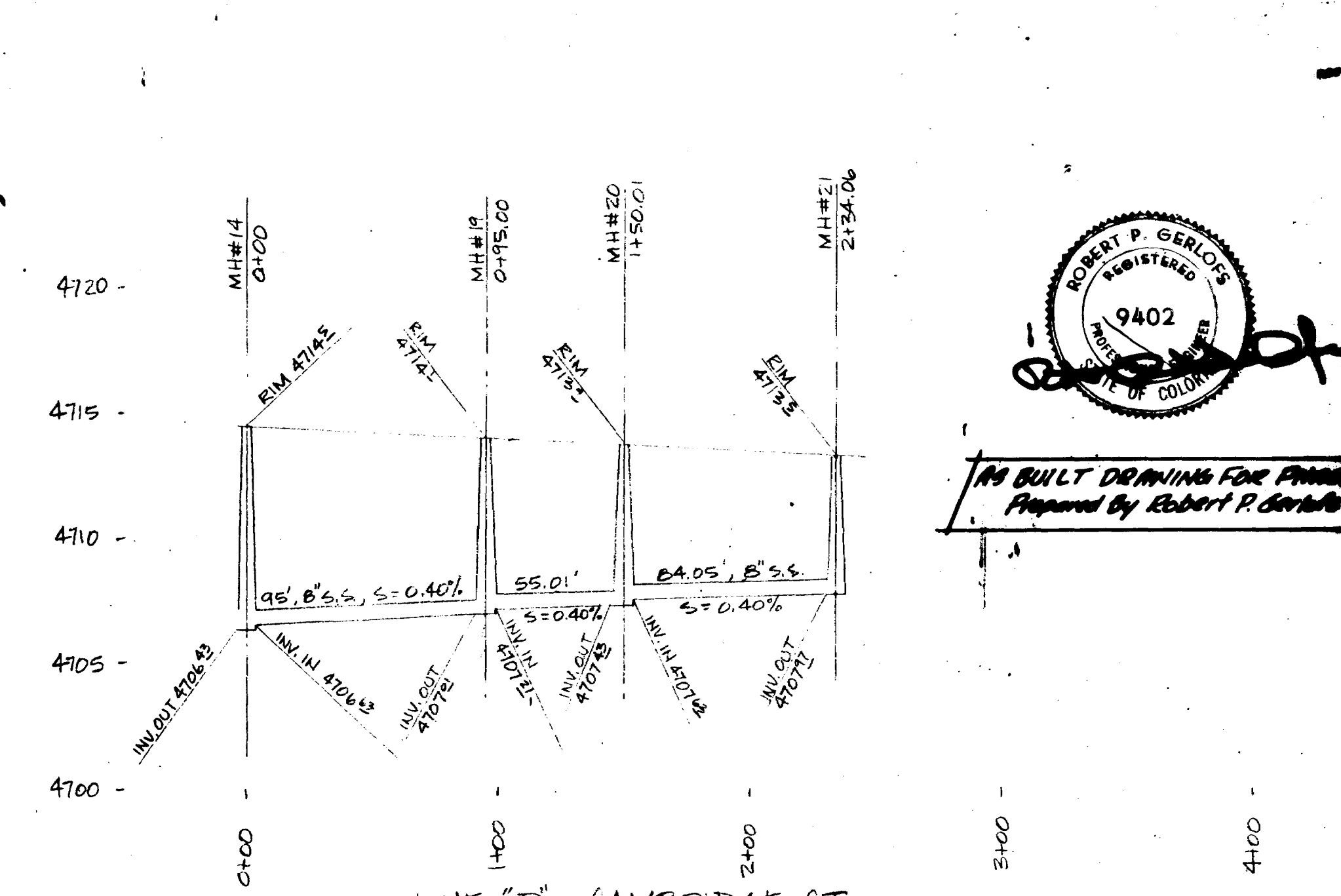
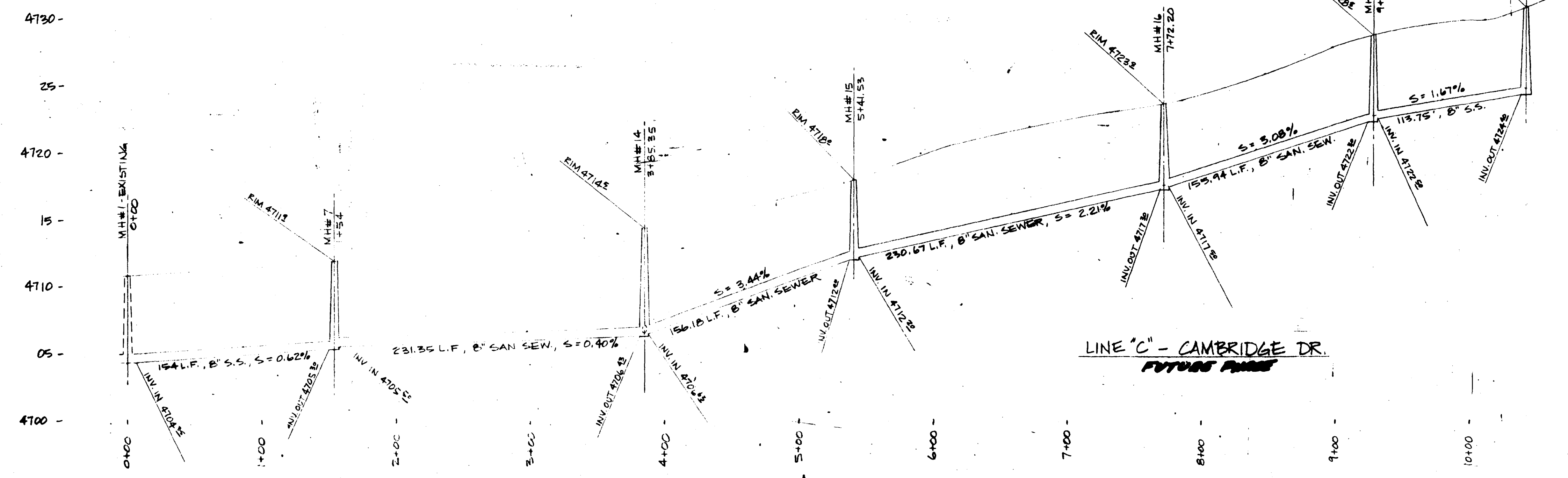
~~SURVEYORS CERTIFICATE~~

~~This is to certify that the sewer lines and related appurtenances were surveyed and found to be at the grades and elevations shown.~~

~~Surveyor _____ Date _____ Sect. & No. _____~~



CAMBRIDGE SUBDIVISION
SEWER PROFILES
8/7/83
BECK, SHEUM & ASSOC., INC.
Sht 2 of 2



NOT BUILT DRAWING FOR PHASE I
Prepared by Robert P. Gerlo's