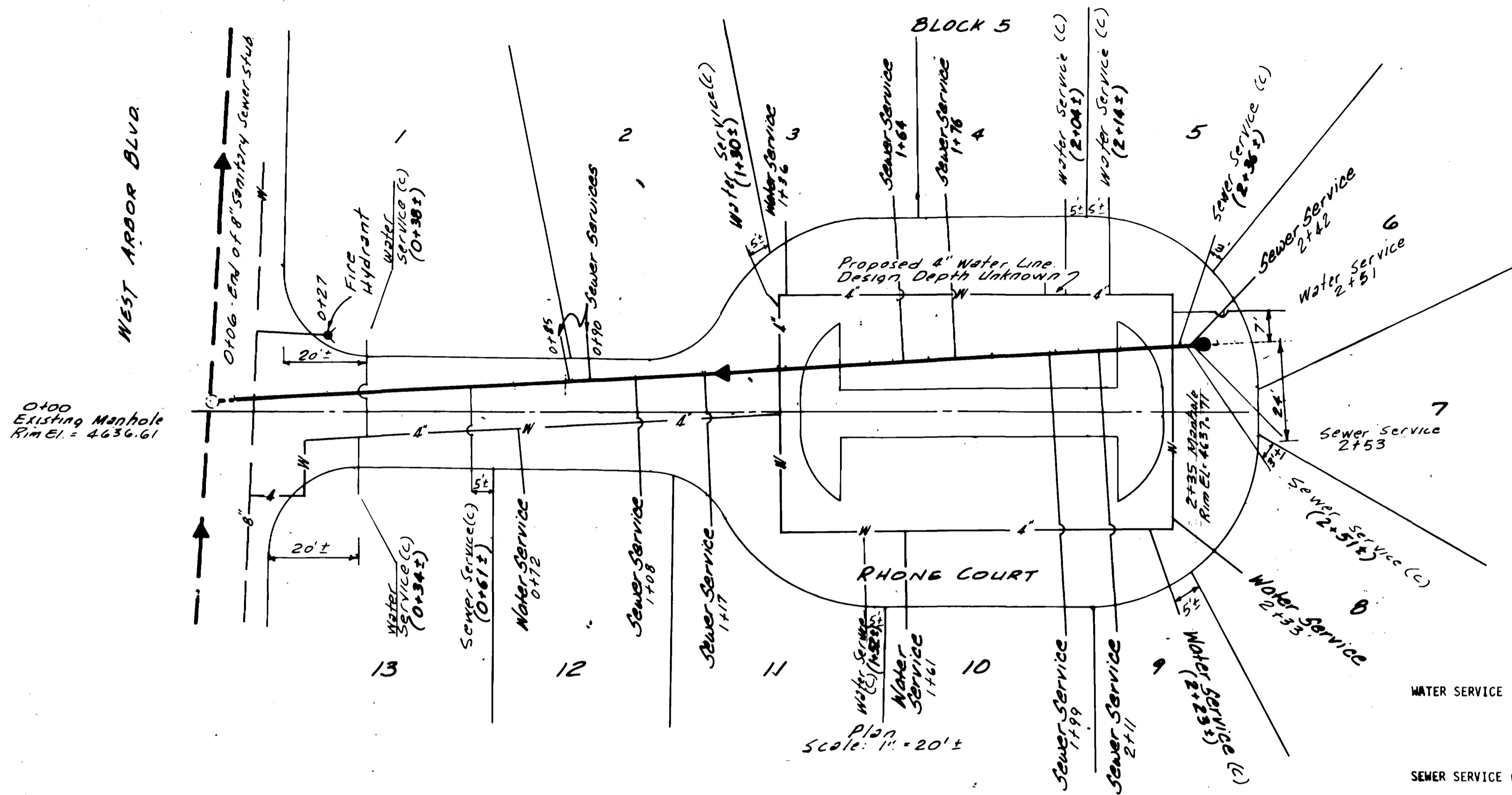


WEST ARBOR BLVD



Plan Scale: 1" = 20'

LEGEND

- WATER SERVICE 1+61 INDICATES LOCATION OF SERVICE LINE IN REFERENCE TO STATIONING ALONG THE SEWER LINE OR AN EXTENSION OF STATIONING ALONG THE SEWER LINE AT A POINT PERPENDICULAR TO THE SEWER LINE AT THE APPROXIMATE PROPERTY LINE. FIELD LOCATED ACCORDING TO LOCATION MARKER BOARDS SET BY THE CONTRACTOR AT THE END OF SEWER AND WATER SERVICE LINES.
- SEWER SERVICE (C) INDICATES LOCATION OF SEWER OR WATER LINE SERVICES ACCORDING TO THE CONTRACTORS RECORDS WHERE LOCATION MARKERS HAD BEEN OBLITERATED.

AS-BUILT - 5/19/89

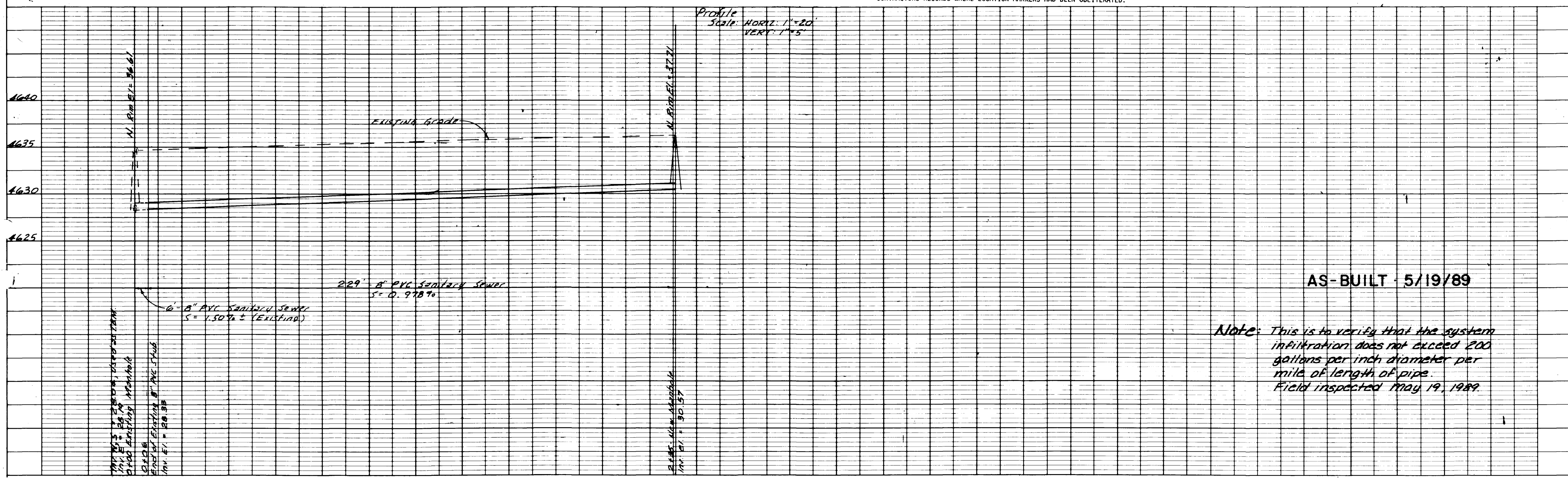
NOTE:

1. THESE PLANS WERE TRACED BY W.H. LIZER AND ASSOCIATES FROM A COPY OF PLANS DONE BY "OTHERS", OF WHICH PLANS WERE DEEMED TOO ILLEGIBLE BY THE CONTRACTOR, LYLE STATES CONSTRUCTION, TO DO CONSTRUCTION BY.
2. THESE PLANS ONLY APPLY TO THE CONSTRUCTION OF THE SANITARY SEWER LINE, OF WHICH EXISTING CONDITIONS WERE FIELD VERIFIED BY W.H. LIZER AND ASSOCIATES ON DECEMBER 18, 1988.
3. THE FINAL STREET GRADE DESIGN WILL REQUIRE VERIFICATION BEFORE THE TOP OF THE MANHOLE GRADE AT STATION 2+31 CAN BE ESTABLISHED.
4. ALL CITY OF GRAND JUNCTION SPECIFICATIONS FOR THE CONSTRUCTION OF SANITARY SEWER LINES SHALL APPLY.



PLANS FOR THE CONSTRUCTION OF AN 8" SANITARY SEWER LINE RHONE COURT, THE VINEYARDS, MESA COUNTY, COLORADO.

W.H. LIZER AND ASSOCIATES
ENGINEERING AND LAND SURVEYING
576 25 ROAD-UNIT 8, PH. 241-1129
GRAND JUNCTION, COLORADO 81505



Profile Scale: HORIZ. 1" = 20' VERT. 1" = 5'

AS-BUILT - 5/19/89

Note: This is to verify that the system infiltration does not exceed 200 gallons per inch diameter per mile of length of pipe. Field inspected May 19, 1989.