







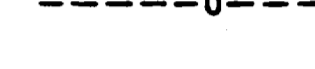

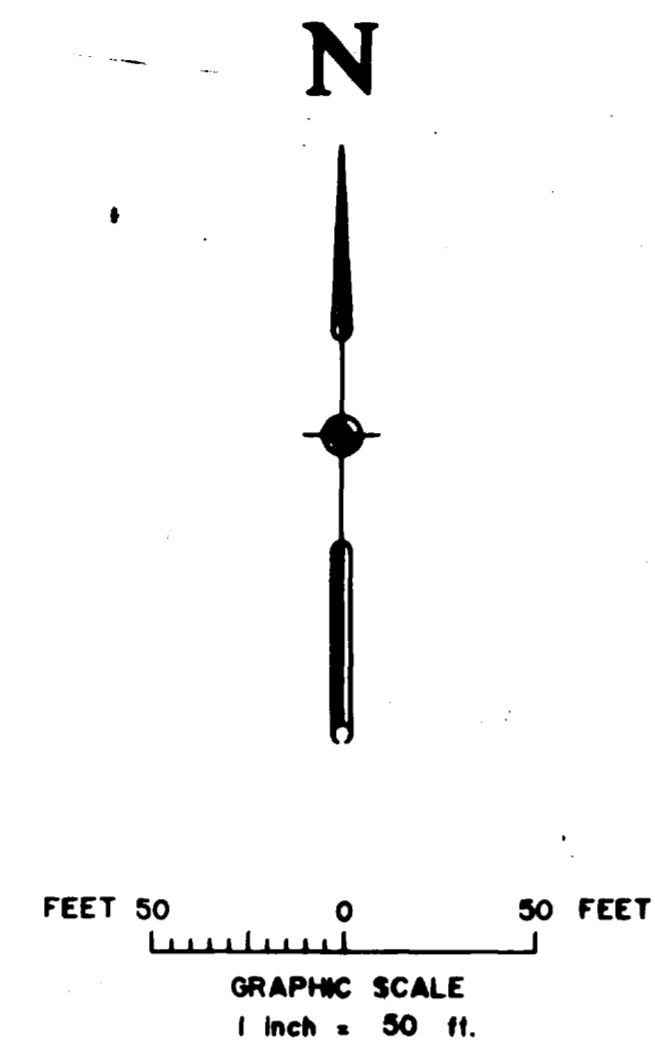


LEGEND

-  PVC WATERLINE
-  PVC SANITARY SEWER LINE/MANHOLE
-  FUTURE SEWER LINE EXTENSION/MANHOLE
-  FUTURE WATER LINE EXTENSION
-  FIRE HYDRANT ASSEMBLY
-  GATE VALVE & BOX
-  RCP STORM SEWER/MANHOLE/INLET
-  PLUG
-  MISC. UTIL. LINES
(Elec., Gas, Telephone & Cable TV)
-  STREET LIGHT

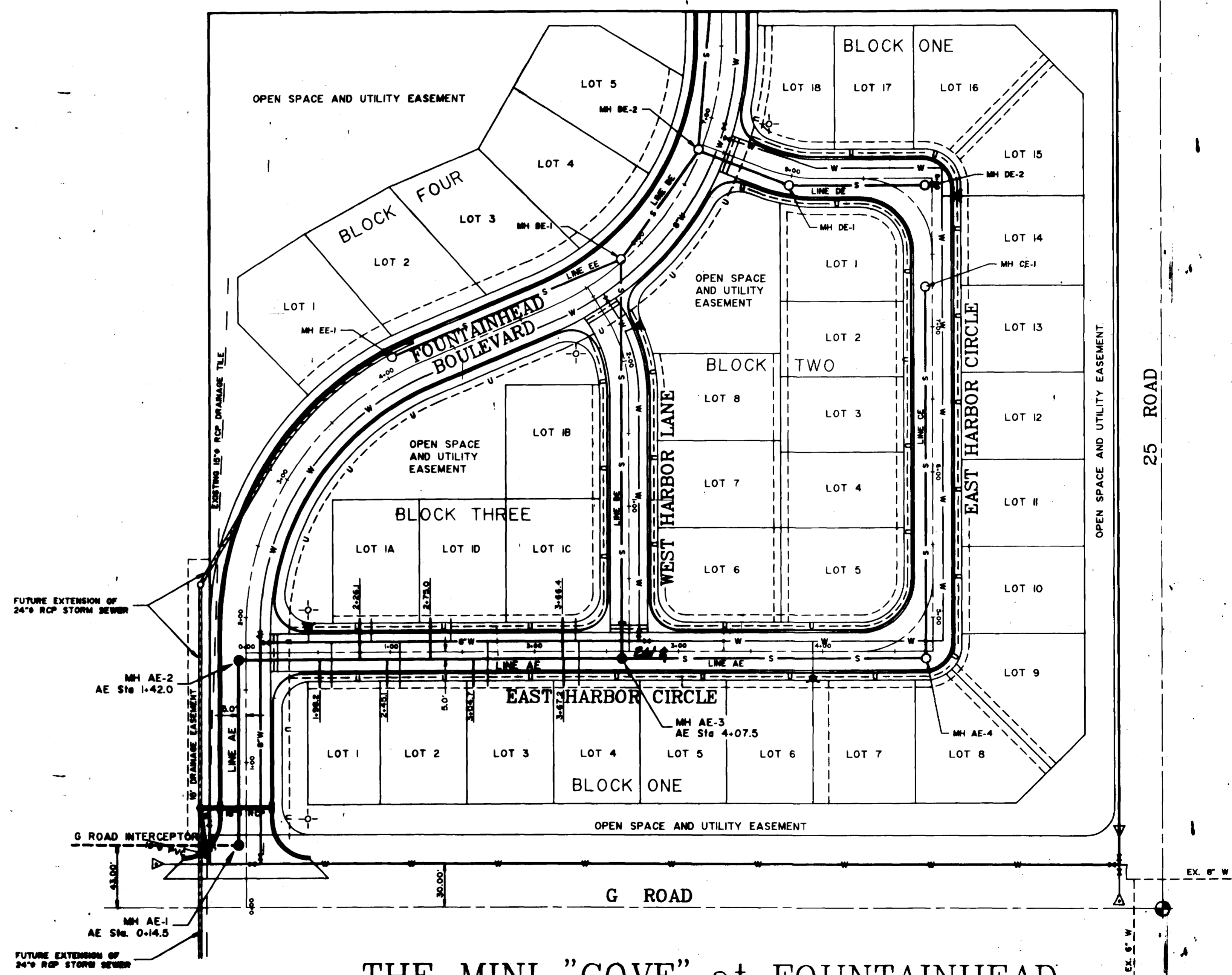
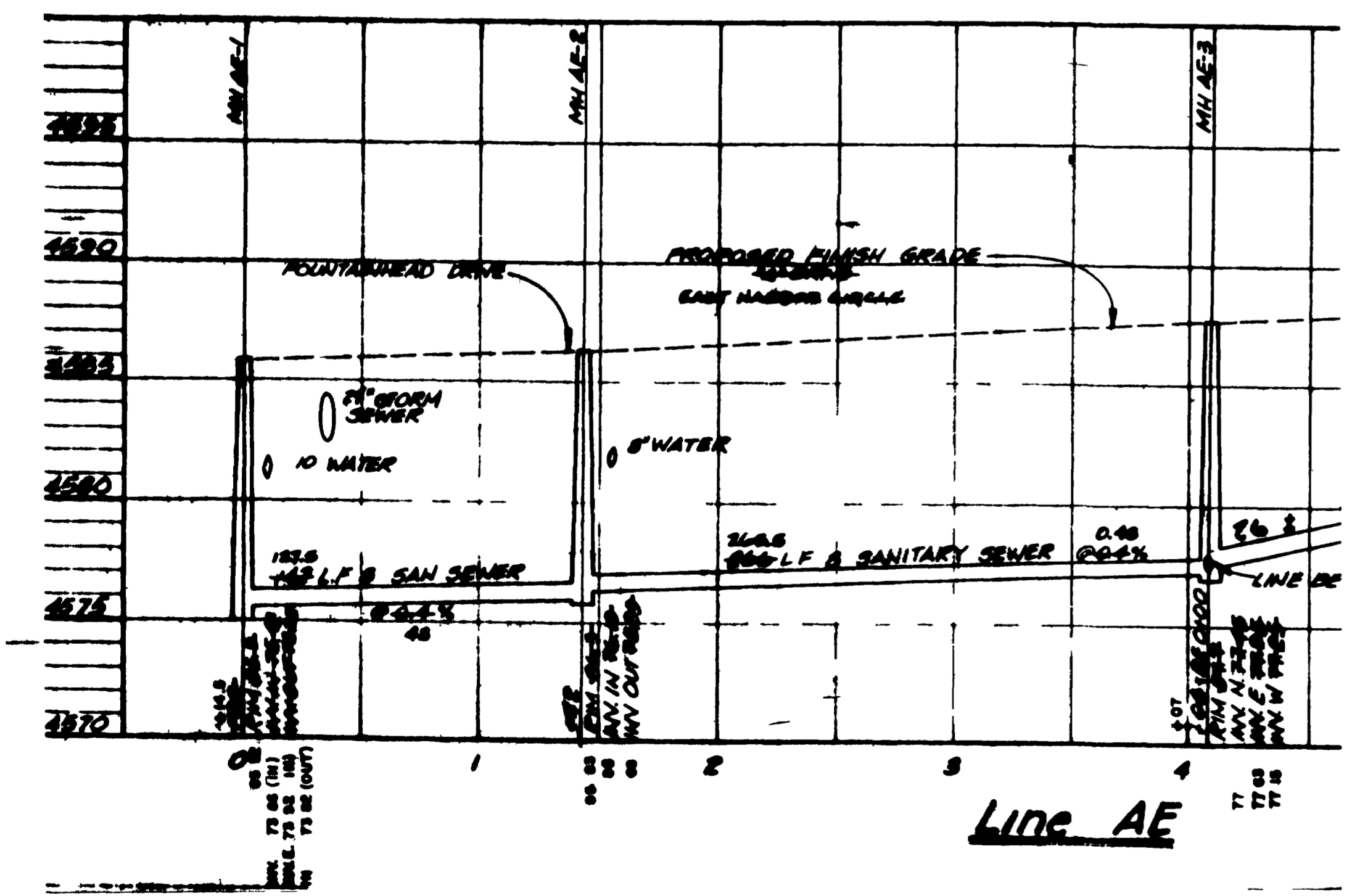


CONSTRUCTION DRAWING OF RECORD

ENGINEERS STATEMENT

Banner Associates, Inc. reviewed the construction of the Sanitary Sewer for Fountainhead Subdivision, Mini "Cove" Replat as shown on this plan and that to the best of our knowledge it conforms to the City of Grand Junction Standards and Specifications.

Banner Associates, Inc. _____ Date _____



THE MINI "COVE" at FOUNTAINHEAD

DESIGNED BY: SES	REVIEWED BY: FOR
DRAWN BY: PARACOR	REVIEWED BY:
CHECKED BY: DEC	DATE: FOR BANNER ASSOCIATES, INC.

BANNER

BANNER ASSOCIATES, INC. • CONSULTING ENGINEERS & ARCHITECTS
2777 CROSSROADS BOULEVARD • GRAND JUNCTION, CO 81506 • (303) 243-2842
608 E. MAIN • SUITE 6 • ASPEN, CO 81611 • (303) 926-0887

REVISION	DATE	DESCRIPTION	BY	CHKD
1	8-3-92	PREPARE CONSTRUCTION DRAWING OF RECORD.	SES	DEC

FOUNTAINHEAD DEVELOPMENT CORP.
GRAND JUNCTION, COLO.

**FOUNTAINHEAD SUBDIVISION
SANITARY SEWER**

SCALE: 1"=50'	JOB NO: 8229-06	DATE: 8-4-92
SHEET NO: 1 OF 1		