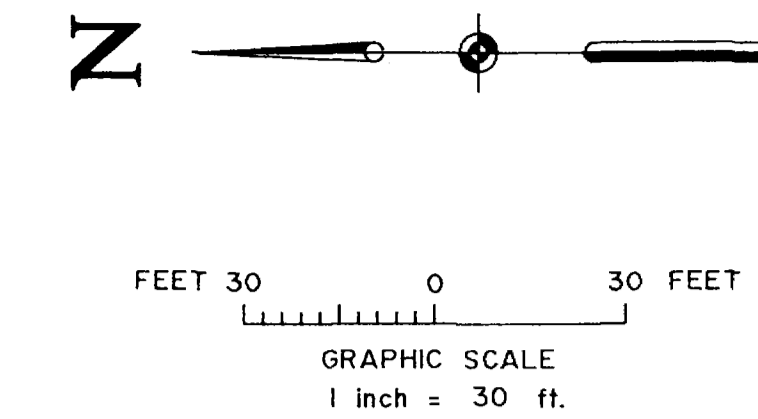
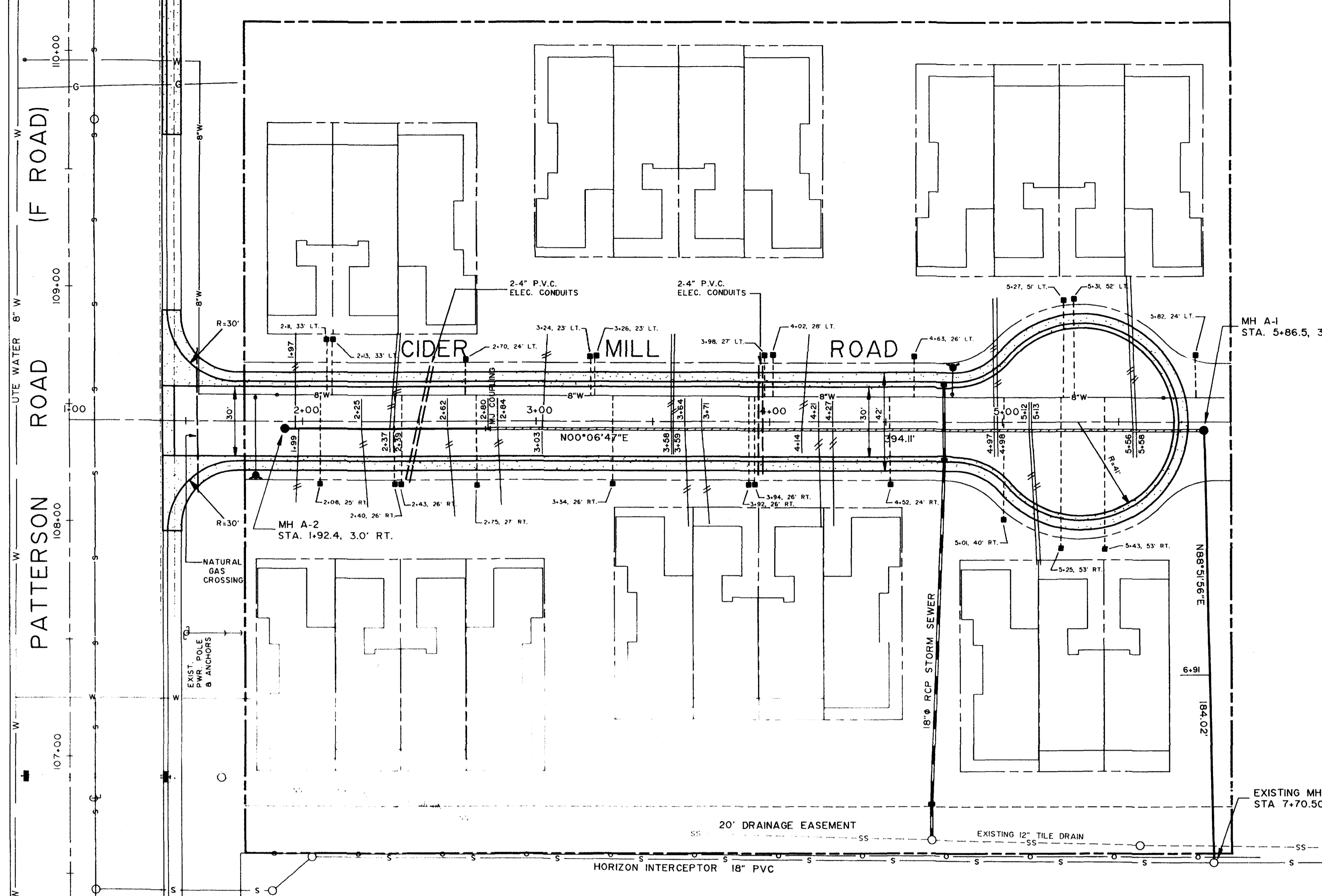


**LEGEND**

- WATER SERVICE
- SEWER SERVICE

**NOTES:**

- ROADWAY PAVEMENT SECTION CONSISTS OF A 3" HOT BITUMINOUS PAVEMENT SURFACE CONSTRUCTED OVER 9" CLASS 6 AGGREGATE BASE COURSE.
- SERVICE STUBS INTO LOTS WERE CONSTRUCTED ACCURATELY AS SHOWN ON PLAN.

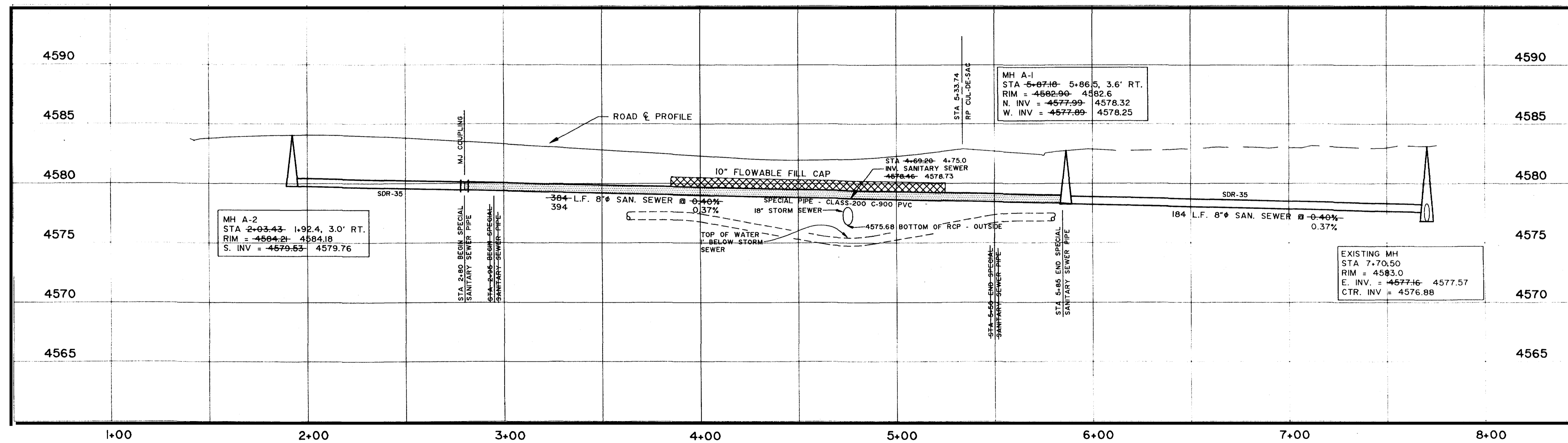


**ENGINEERS STATEMENT**

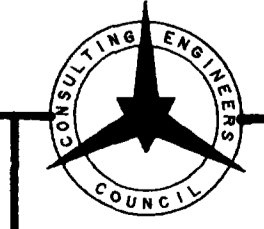
Banner Associates, Inc. reviewed the construction of the Sanitary Sewer for Colony Park Subdivision as shown on this plan and that to the best of our knowledge it conforms to the City of Grand Junction Standards and Specifications.

Banner Associates, Inc. \_\_\_\_\_ Date \_\_\_\_\_

**CONSTRUCTION DRAWING OF RECORD**



DRAWN BY: DEC/SES	REVIEWED _____ DATE: _____ FOR _____
CHECKED BY: DEC	REVIEWED _____ DATE: _____ FOR BANNER ASSOCIATES, INC.



**BANNER**  
BANNER ASSOCIATES, INC. • CONSULTING ENGINEERS & ARCHITECTS  
2777 CROSSROADS BOULEVARD • GRAND JUNCTION, CO 81506 • (303) 243-2242  
605 E. MAIN • SUITE 6 • ASPEN, CO 81611 • (303) 925-5857

REVISION	DATE	DESCRIPTION	BY	CHD
1.	8-4-92	REVISE AS CONSTRUCTION DRAWING OF RECORD.	SES	DEC
2.	10-8-92	ADD WATER SERVICES AND ROAD WIDTHS.	SES	DEC

ALCO BUILDING COMPANY	GRAND JUNCTION, COLORADO
<b>COLONY PARK SUBDIVISION SANITARY SEWER PLAN AND PROFILE</b>	

SCALE: Horz: 1" = 30' Vert: 1" = 5'	Project No: 8239-03
DATE: 08-04-92	SHEET NO: 1 of 1