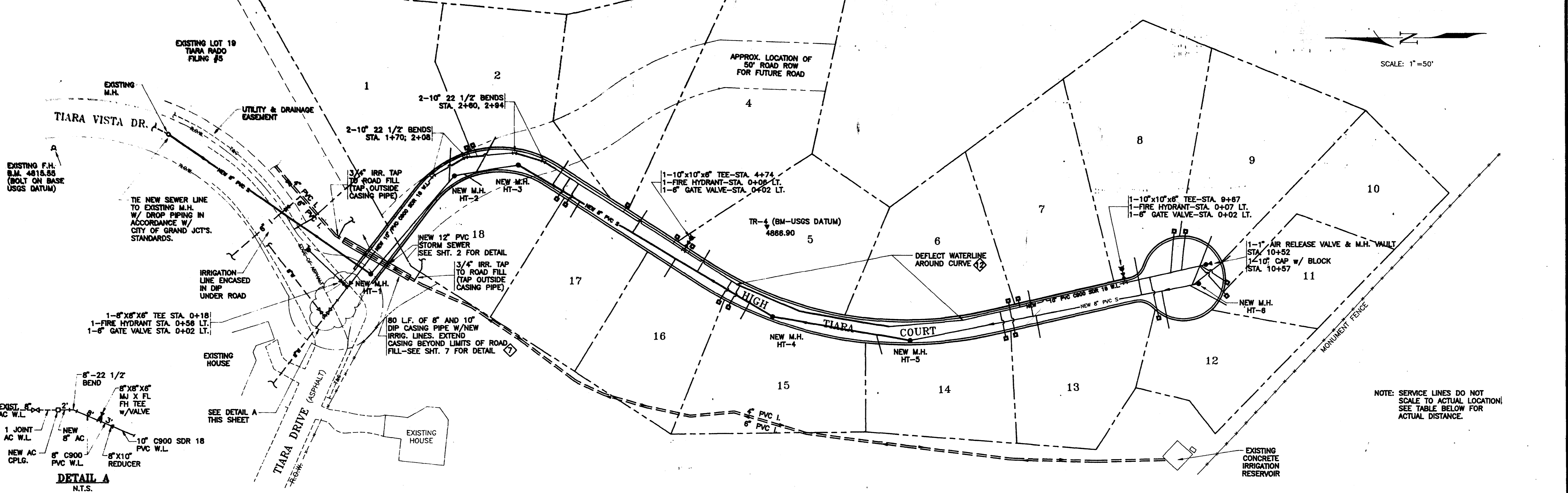
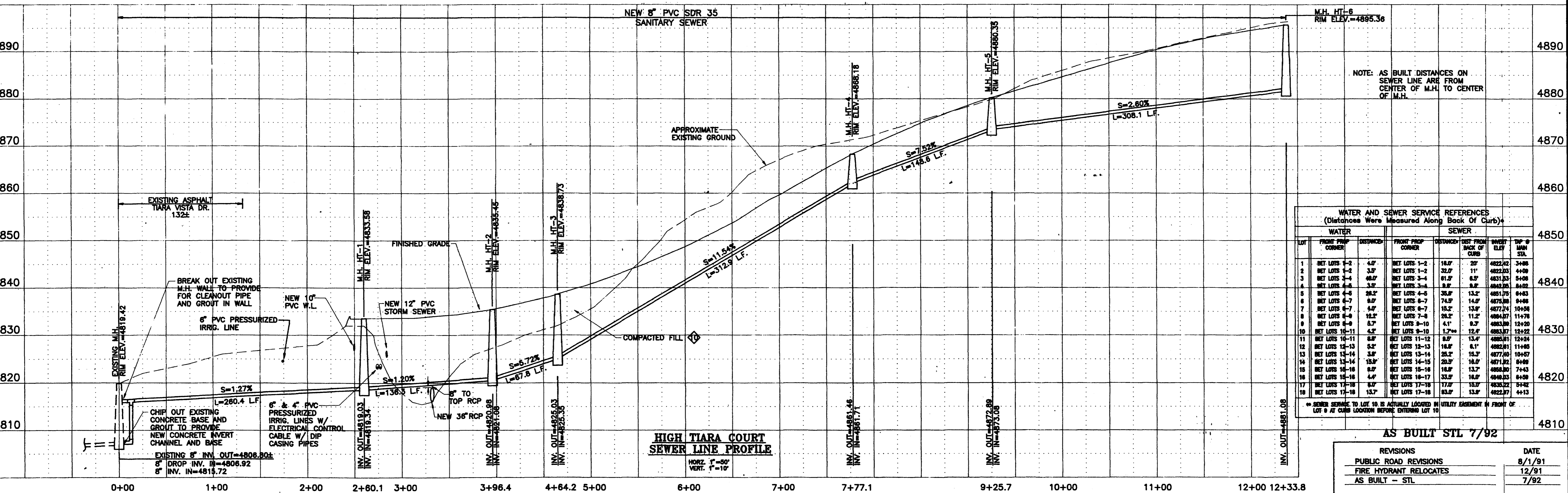


SCALE: 1"=50'



**DETAIL A**  
N.T.S.

NOTE: SERVICE LINES DO NOT SCALE TO ACTUAL LOCATION! SEE TABLE BELOW FOR ACTUAL DISTANCE.



NOTE: AS BUILT DISTANCES ON SEWER LINE ARE FROM CENTER OF M.H. TO CENTER OF M.H.

WATER AND SEWER SERVICE REFERENCES (Distances Were Measured Along Back Of Curb)*							
LOT	WATER		SEWER		INVERT ELEV.	TOP OF MAN STA.	TOP OF W.M. STA.
	FRONT PROP. CORNER	DISTANCE	FRONT PROP. CORNER	DIST. FROM CURB			
1	BET LOTS 1-2	4.0'	BET LOTS 1-2	18.0'	20'	4822.42	3+08
2	BET LOTS 1-2	3.5'	BET LOTS 1-2	32.0'	11'	4822.33	4+08
3	BET LOTS 3-4	48.0'	BET LOTS 3-4	81.5'	8.5'	4831.33	5+08
4	BET LOTS 4-5	3.0'	BET LOTS 3-4	9.0'	9.0'	4842.28	6+02
5	BET LOTS 4-5	28.2'	BET LOTS 4-5	35.0'	13.2'	4851.75	6+43
6	BET LOTS 4-7	8.0'	BET LOTS 4-7	74.5'	14.0'	4875.88	6+48
7	BET LOTS 4-7	4.0'	BET LOTS 6-7	15.2'	13.0'	4872.74	10+56
8	BET LOTS 4-8	12.2'	BET LOTS 7-8	28.2'	11.2'	4864.57	11+78
9	BET LOTS 8-9	5.7'	BET LOTS 8-10	4.1'	8.3'	4883.80	12+20
10	BET LOTS 10-11	4.2'	BET LOTS 9-10	1.7'	12.4'	4883.57	12+22
11	BET LOTS 10-11	8.0'	BET LOTS 11-12	8.0'	13.4'	4885.81	12+24
12	BET LOTS 12-13	5.2'	BET LOTS 12-13	18.0'	8.1'	4882.81	11+85
13	BET LOTS 13-14	3.8'	BET LOTS 13-14	25.2'	15.3'	4877.40	10+57
14	BET LOTS 13-14	15.0'	BET LOTS 14-15	22.3'	16.0'	4871.82	6+49
15	BET LOTS 14-16	8.0'	BET LOTS 14-16	18.0'	13.7'	4888.80	7+43
16	BET LOTS 16-18	4.4'	BET LOTS 16-17	33.0'	18.0'	4848.13	6+58
17	BET LOTS 17-18	15.0'	BET LOTS 17-18	17.0'	15.0'	4835.22	5+42
18	BET LOTS 17-18	13.7'	BET LOTS 17-18	83.0'	13.0'	4822.87	4+13

\* SEWER SERVICE TO LOT 10 IS ACTUALLY LOCATED IN FRONT OF LOT 9 AT CURB LOCATION BEFORE ENTERING LOT 10

AS BUILT STL 7/92

**KEY**

- S — NEW SEWERLINE
- WL — NEW WATERLINE
- — — — — EXISTING WATERLINE
- — — — — EXISTING IRRIG. LINE
- — — — — NEW WATER METER
- — — — — NEW MANHOLE
- — — — — EXISTING MANHOLE
- — — — — NEW FIRE HYDRANT
- — — — — EXISTING FIRE HYDRANT

- GENERAL NOTES**
- ALL SANITARY SEWER CONSTRUCTION SHALL BE IN ACCORDANCE WITH THE CITY OF GRAND JUNCTION'S STANDARDS AND SPECIFICATIONS.
  - ALL SEWER MAIN PIPE SHALL BE PVC SDR 35 UNLESS OTHERWISE SPECIFIED.
  - ALL SANITARY SEWER SERVICES SHALL BE 4 IN. SDR 35 PVC.
  - SANITARY SEWER SERVICES SHALL EXTEND 10 FT. BEYOND THE RIGHT-OF-WAY AND BE CAPPED AND MARKED WITH A 2X4 POST EXTENDED TO THE GROUND SURFACE.
  - THE CONTRACTOR SHALL NOTIFY THE CITY OF GRAND JUNCTION AND THE UTE WATER DISTRICT 24 HOURS PRIOR TO BEGINNING OF CONSTRUCTION.
  - THE CONTRACTOR SHALL BE RESPONSIBLE FOR OBTAINING NECA COUNTY UNDERGROUND UTILITY PERMIT FOR THE SEWER LINE ALONG TIARA VISTA DRIVE.
  - NEW IRRIGATION LINES AND CONTROL CABLE IN CASING PIPE SHALL BE CONNECTED TO EXISTING LINES AFTER IRRIGATION SEASON HAS ENDED. SEPARATE CASING PIPE TO BE PROVIDED FOR EACH IRRIGATION LINE.
  - LOCATION OF EXISTING UTILITIES SHOWN IS APPROXIMATE ONLY, BASED ON INFORMATION FURNISHED BY THE UTILITY COMPANIES AND FIELD SURVEYS. THE CONTRACTOR SHALL BE RESPONSIBLE FOR VERIFYING ACTUAL UTILITY LOCATION AND PROTECTION DURING CONSTRUCTION.
  - ALL TRENCHES SHALL BE COMPACTED TO SIZE AS DETERMINED BY AASHTO T-99.
  - ALL UTILITIES ALONG THE COMPACTED FILL AREA TO BE INSTALLED AFTER FILL HAS BEEN PLACED AND COMPACTED TO A DEPTH OF AT LEAST 3 FT. ABOVE THE FINISHED UTILITY GRADE.
  - ALL WATERLINE CONSTRUCTION SHALL BE IN ACCORDANCE WITH THE UTE WATER DISTRICT'S STANDARDS AND SPECIFICATIONS.
  - CONTRACTOR MAY ELECT TO DEFLECT WATERLINE IN LIEU OF INSTALLING 11 1/4 DEGREE BENDS, PROVIDED MAXIMUM DEFLECTION IS NOT EXCEEDED PER PIPE MANUFACTURER'S RECOMMENDATION.
  - ALL WATERLINE PIPE SHALL BE PVC C900 SDR 18 UNLESS OTHERWISE SPECIFIED.
  - MINIMUM COVER REQUIRED OVER THE TOP OF NEW WATERLINE IS 4 FT.
  - FITTINGS SHALL BE MECHANICAL JOINT DUCTILE IRON CLASS 250 CEMENT LINED.
  - ALL FIRE HYDRANTS SHALL BE MULLER CENTURION OR CLOW 2500 HYDRANTS.
  - WATER SERVICE LINES SHALL BE FLEXIBLE TYPE K COPPER AND BE 3/4 INCH.
  - WATER METERS SHALL BE SUPPLIED BY THE UTE WATER DISTRICT.
  - MINIMUM OF 10 FT. SEPARATION SHALL BE MAINTAINED AT ALL TIMES BETWEEN THE WATERLINE AND SEWER LINE (EXCEPT AT SERVICE LINE CROSSINGS).
  - CONTRACTOR SHALL NOTIFY THE UTE WATER DISTRICT TO CLOSE NECESSARY VALVES TO ACCOMPLISH TIE-IN AT THE EXISTING WATERLINE ON TIARA DRIVE.



**WestWater Engineering**  
P.O. Box 1470  
Pallada, Colorado 81526

THE SEASONS AT TIARA RADO-FILING 2  
HIGH TIARA COURT  
UTILITY COMPOSITE

Design By:	Drafted By:	Date:	Project No.	Sheet
S.T.L.	C.A.K.	2-25-91	9124	5 of 7