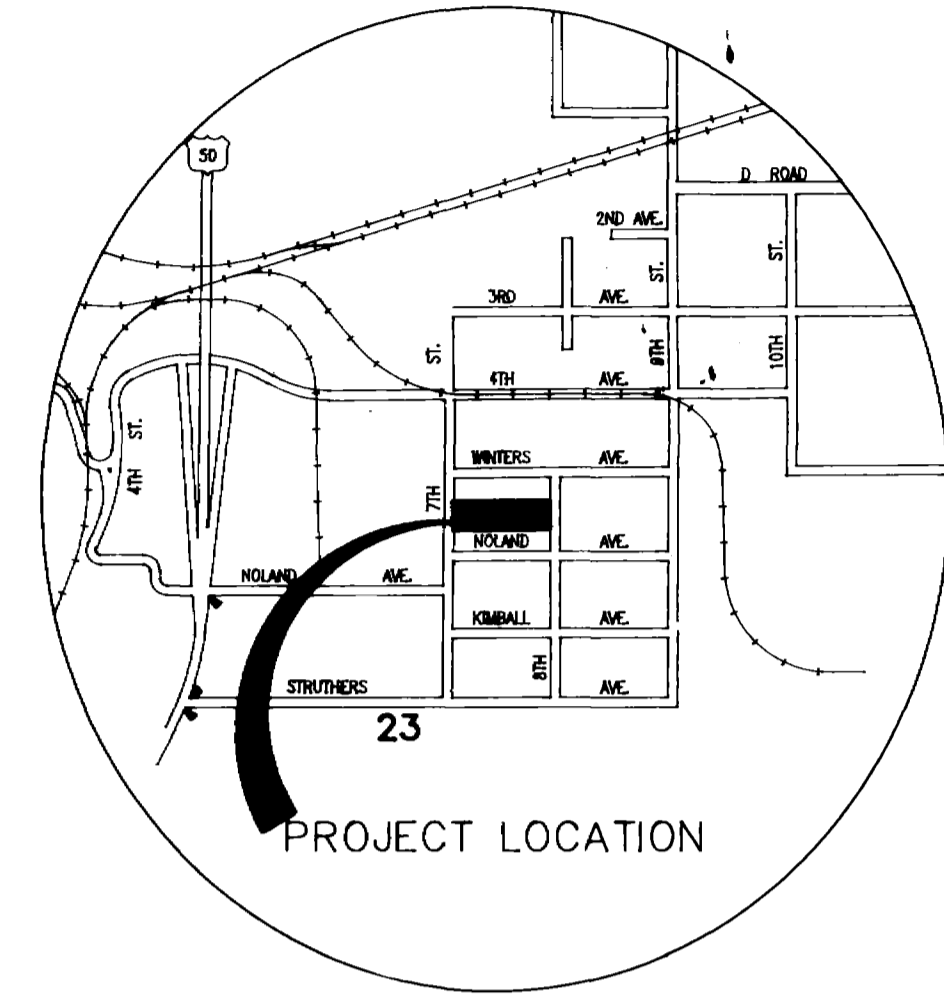
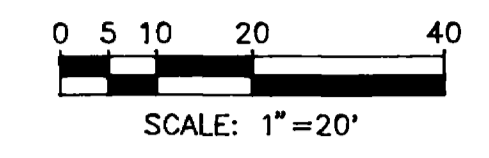


WINTERS AVE.

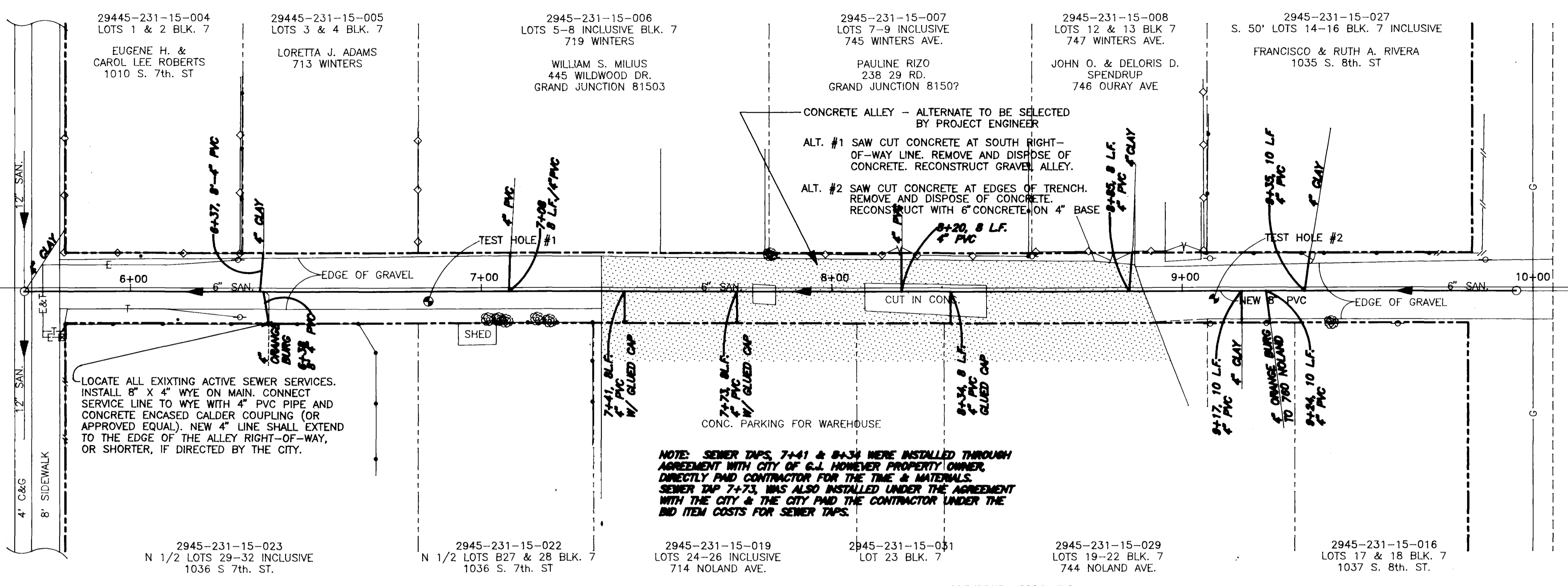
7TH STREET

8TH STREET



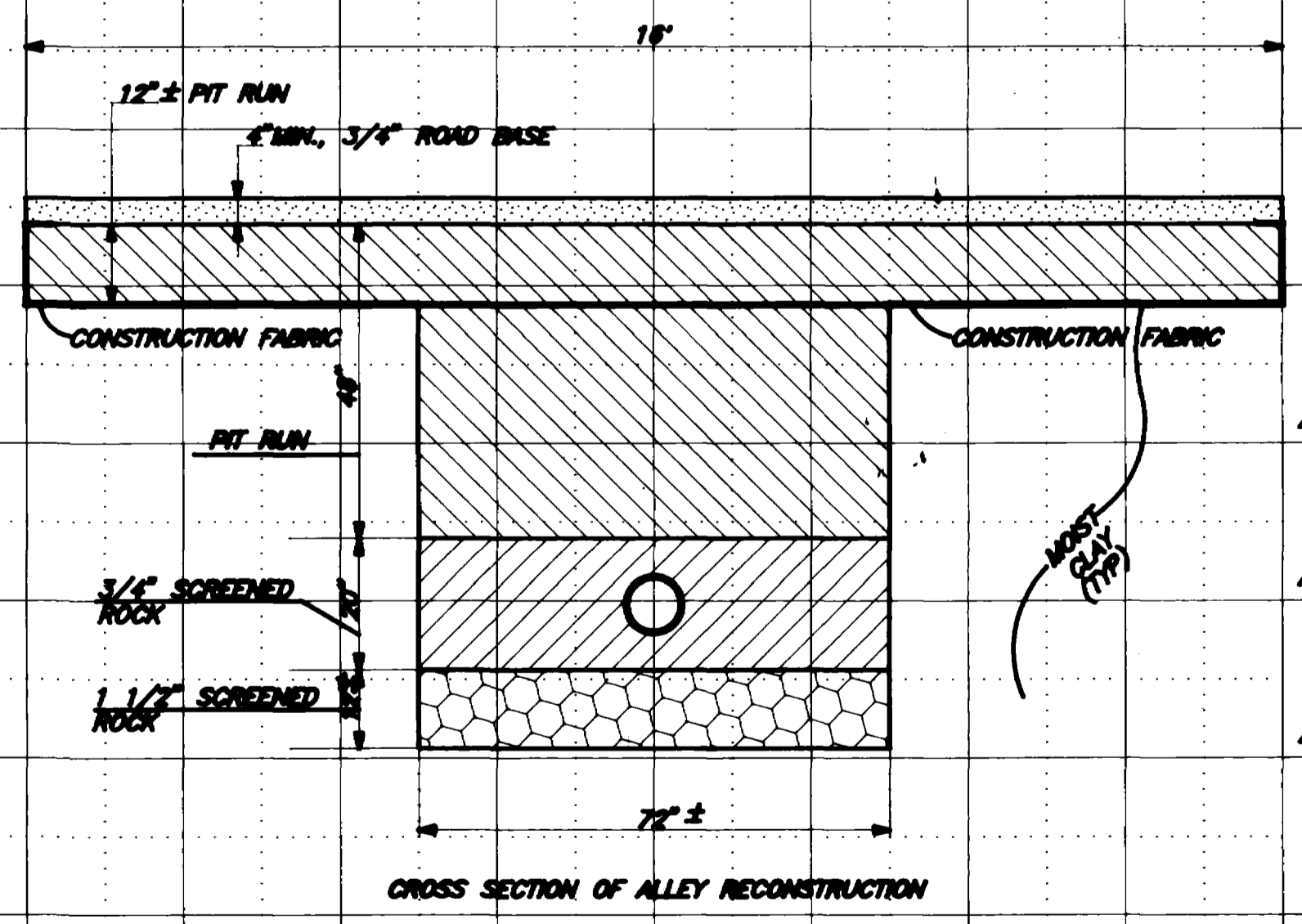
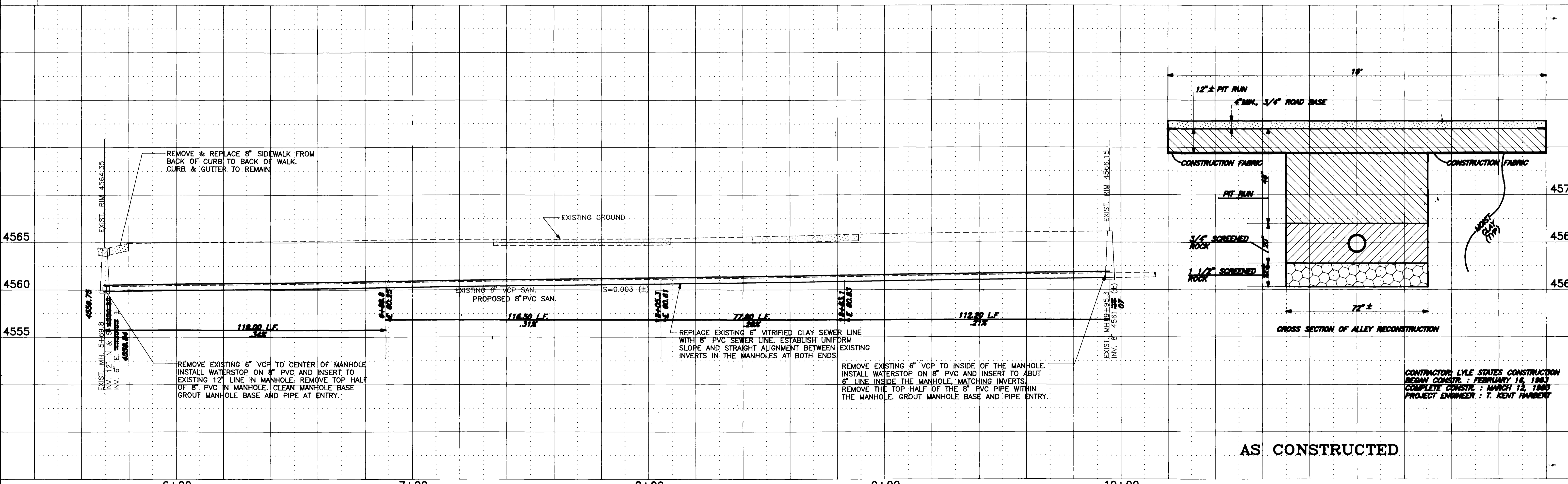
VICINITY MAP

FOR DETAILS SEE:
 CITY OF GRAND JUNCTION DEPARTMENT
 OF PUBLIC WORKS & UTILITIES.
 EXHIBIT "F" - STANDARD SANITARY SEWER DETAILS
 EXHIBIT "E" - STANDARD CONCRETE DETAILS



NOLAND AVE.

NOTE:
 ORIGINAL 6" LINE INSTALLED AS PART OF
 SEWER DIST. #8 FILE #02-344



CROSS SECTION OF ALLEY RECONSTRUCTION

CONTRACTOR: LYLE STATES CONSTRUCTION
 BEGAN CONSTRUCTION: FEBRUARY 16, 1993
 COMPLETE CONSTRUCTION: MARCH 12, 1993
 PROJECT ENGINEER: T. KENT HARBERT

AS CONSTRUCTED

REVISION	DESCRIPTION	DATE	DRAWN BY	DATE
REVISION			L. MARTIN	11/9/92
REVISION			T.A.B.	11/9/92
REVISION			T.K.H.	11/9/92
REVISION				

DEPARTMENT OF PUBLIC WORKS AND UTILITIES
 ENGINEERING DIVISION
 CITY OF GRAND JUNCTION, COLORADO

SEWER LINE REPLACEMENT
 BTW. NOLAND & WINTERS AVE. 7TH/8TH
 Plan & Profile

SHEET NO.	1
OF	1
FILE NO.	78N0WIN