

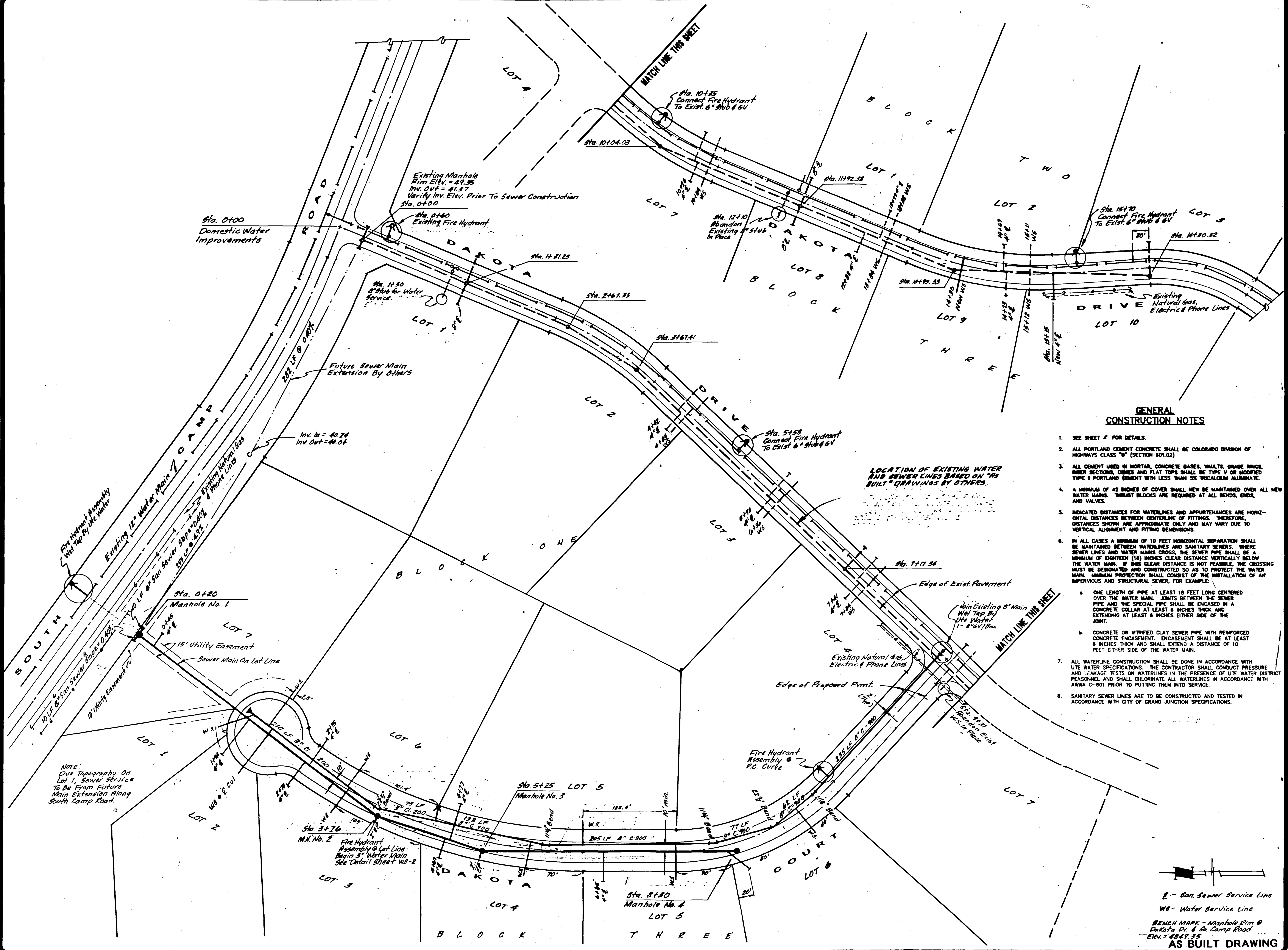
REVISIONS	BY
8/13 Water Line Loc.	UTB
12/16 As Built Dwg.	TAL

TAL THOMAS A. LOQUE
LAND DEVELOPMENT CONSULTANT

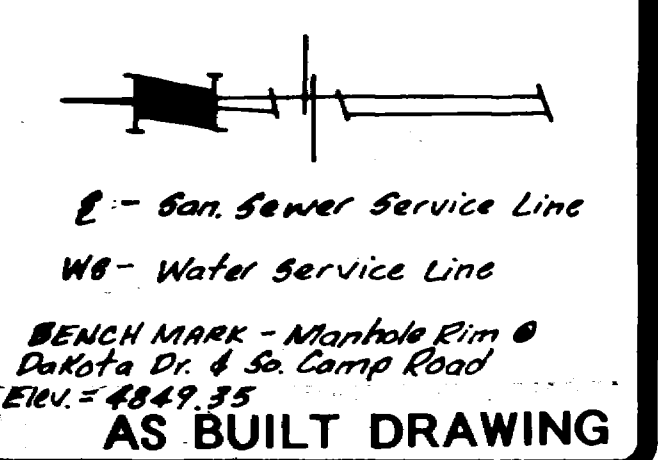
MONUMENT VALLEY FILLING NO. 4
MESA COUNTY COLORADO
OWNED AND DEVELOPED BY: DAVID L. FLETCHER, PO Box 921, Grand Junction, CO (303) 245-7586

WATER & SEWER PLAN

DRAWN TAL
CHECKED PMO
DATE JUNE, 1992
SCALE 1"=50'
JOB NO.
SHEET WS 1
OF 2 SHEETS



- GENERAL CONSTRUCTION NOTES**
- SEE SHEET # FOR DETAILS.
 - ALL PORTLAND CEMENT CONCRETE SHALL BE COLORADO DIVISION OF HIGHWAYS CLASS "B" (SECTION 601.02)
 - ALL CEMENT USED IN MORTAR, CONCRETE BASES, VAULTS, GRADE RINGS, RISER SECTIONS, COPIES AND FLAT TOPS SHALL BE TYPE V OR MODIFIED TYPE II PORTLAND CEMENT WITH LESS THAN 3% TRICALCIUM ALUMINATE.
 - A MINIMUM OF 42 INCHES OF COVER SHALL BE MAINTAINED OVER ALL NEW WATER MAINS. THRUST BLOCKS ARE REQUIRED AT ALL BENDS, ENDS, AND VALVES.
 - INDICATED DISTANCES FOR WATERLINES AND APPURTENANCES ARE HORIZONTAL DISTANCES BETWEEN CENTERLINE OF FITTINGS. THEREFORE, DISTANCES SHOWN ARE APPROXIMATE ONLY AND MAY VARY DUE TO VERTICAL ALIGNMENT AND FITTING DIMENSIONS.
 - IN ALL CASES A MINIMUM OF 10 FEET HORIZONTAL SEPARATION SHALL BE MAINTAINED BETWEEN WATERLINES AND SANITARY SEWERS. WHERE SEWER LINES AND WATER MAINS CROSS, THE SEWER PIPE SHALL BE A MINIMUM OF EIGHTEEN (18) INCHES CLEAR DISTANCE VERTICALLY BELOW THE WATER MAIN. IF THIS CLEAR DISTANCE IS NOT FEASIBLE, THE CROSSING MUST BE DESIGNATED AND CONSTRUCTED SO AS TO PROTECT THE WATER MAIN. MINIMUM PROTECTION SHALL CONSIST OF THE INSTALLATION OF AN IMPERVIOUS AND STRUCTURAL SEWER, FOR EXAMPLE:
 - ONE LENGTH OF PIPE AT LEAST 18 FEET LONG CENTERED OVER THE WATER MAIN. JOINTS BETWEEN THE SEWER PIPE AND THE SPECIAL PIPE SHALL BE ENCASED IN A CONCRETE COLLAR AT LEAST 6 INCHES THICK AND EXTENDING AT LEAST 6 INCHES EITHER SIDE OF THE JOINT.
 - CONCRETE OR VITRIFIED CLAY SEWER PIPE WITH REINFORCED CONCRETE ENCASUREMENT. ENCASUREMENT SHALL BE AT LEAST 8 INCHES THICK AND SHALL EXTEND A DISTANCE OF 10 FEET EITHER SIDE OF THE WATER MAIN.
 - ALL WATERLINE CONSTRUCTION SHALL BE DONE IN ACCORDANCE WITH UTE WATER SPECIFICATIONS. THE CONTRACTOR SHALL CONDUCT PRESSURE AND LEAKAGE TESTS ON WATERLINES IN THE PRESENCE OF UTE WATER DISTRICT PERSONNEL AND SHALL CHLORINATE ALL WATERLINES IN ACCORDANCE WITH AWWA C-601 PRIOR TO PUTTING THEM INTO SERVICE.
 - SANITARY SEWER LINES ARE TO BE CONSTRUCTED AND TESTED IN ACCORDANCE WITH CITY OF GRAND JUNCTION SPECIFICATIONS.



Received 2-26-93 Bill Cheney

REVISIONS	BY
15	W.P. Dwyer

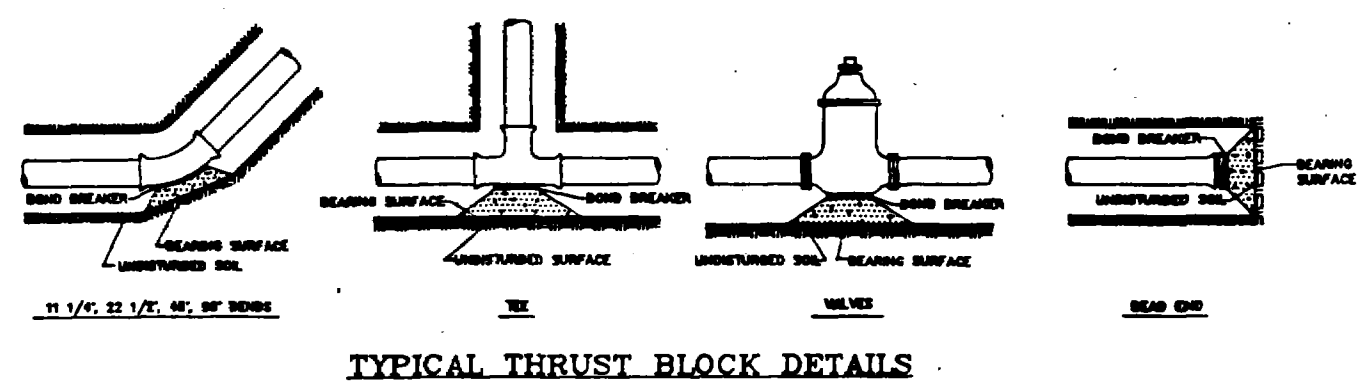
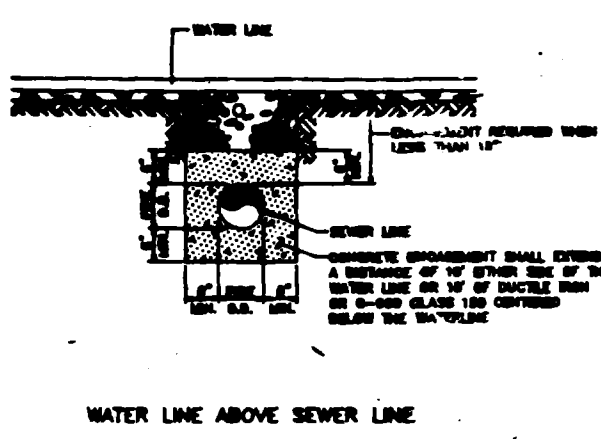
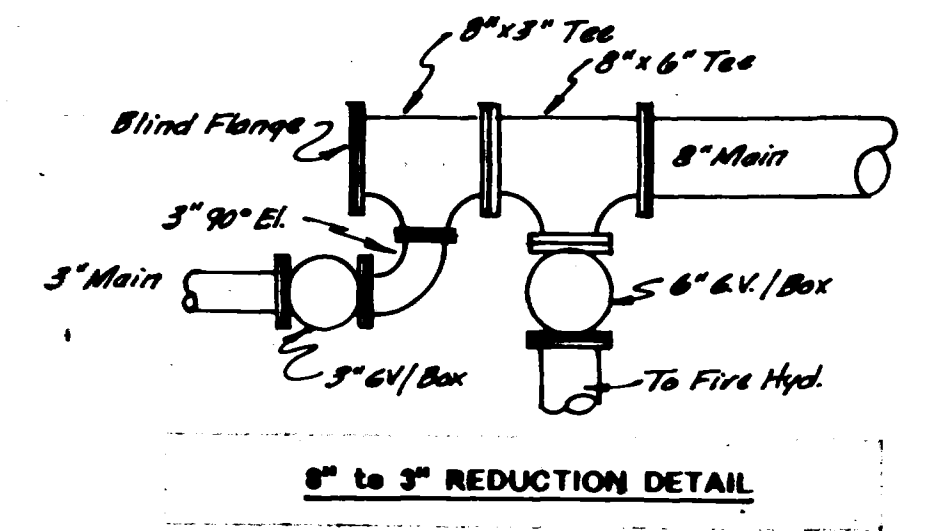
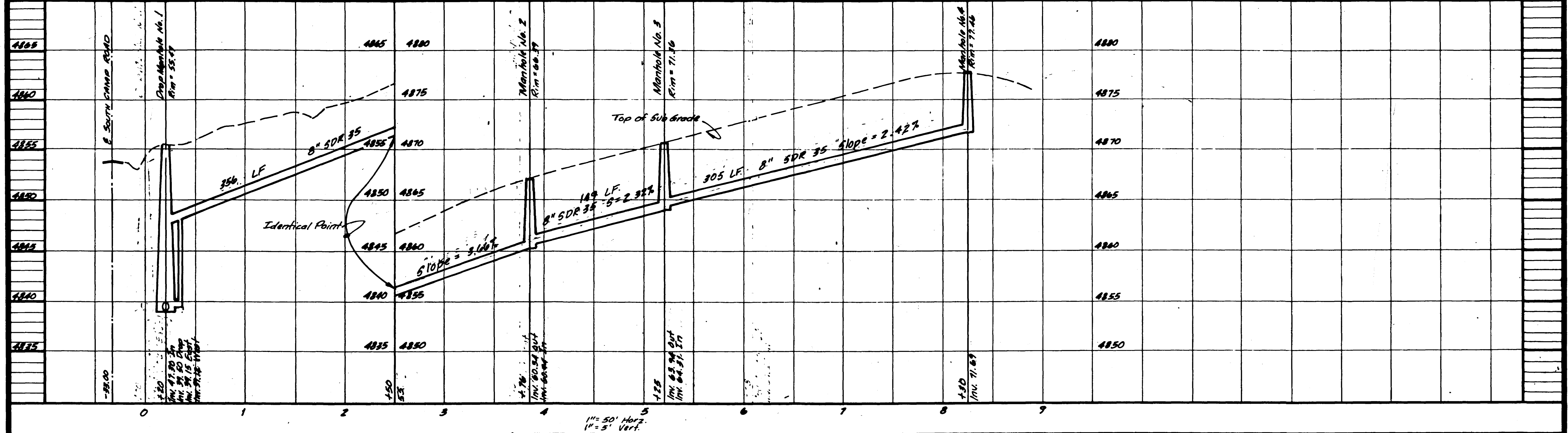
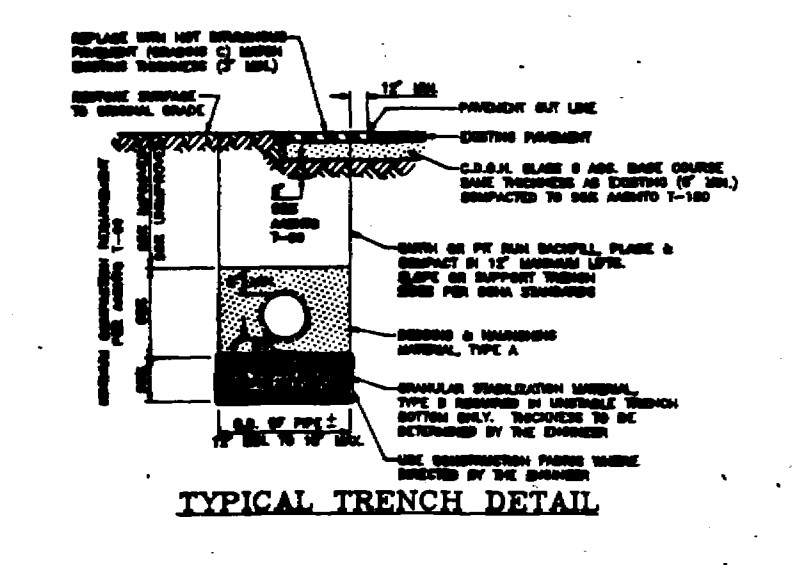
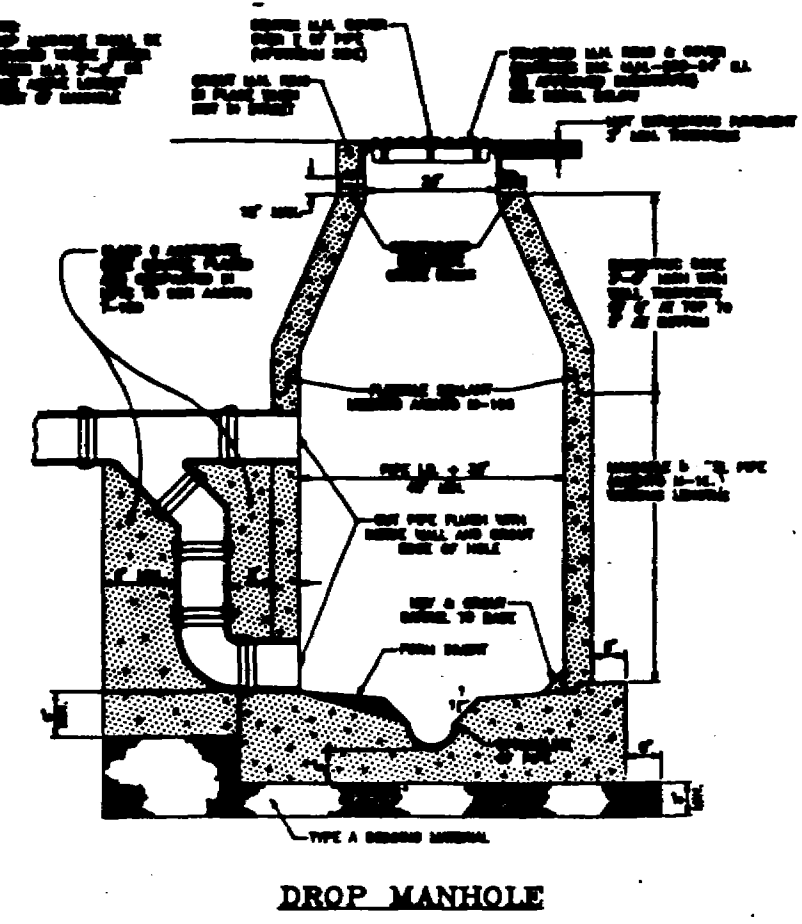
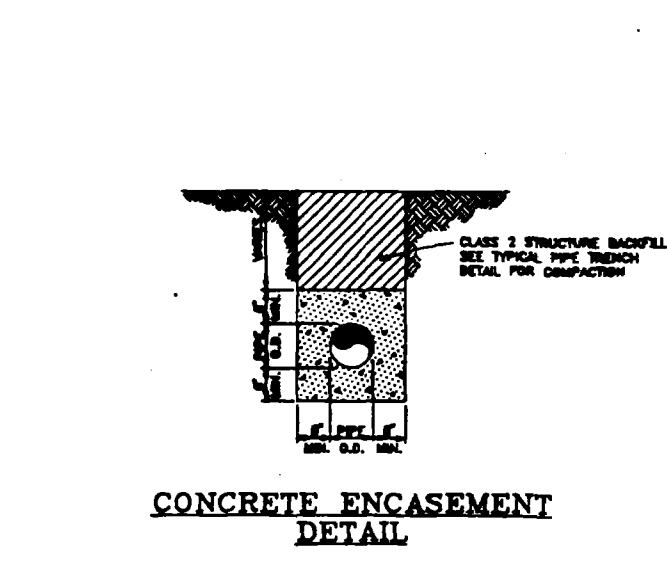
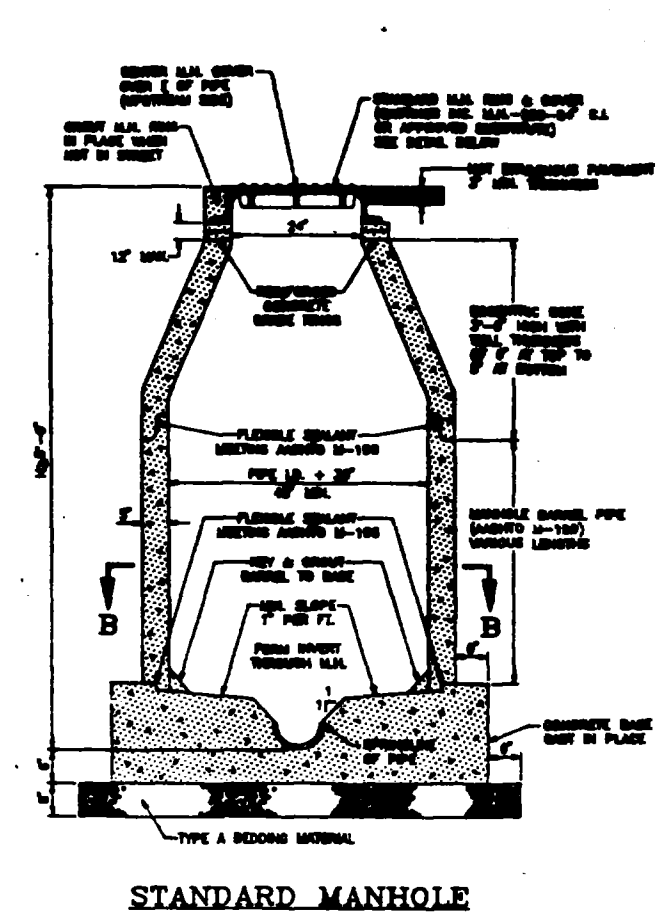
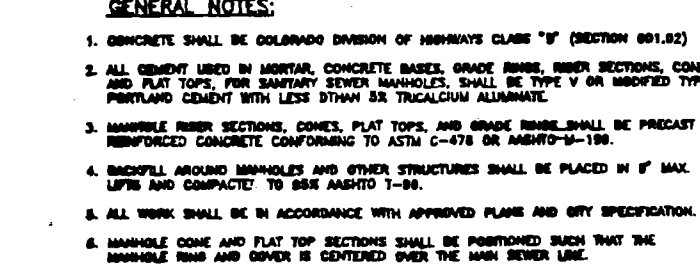
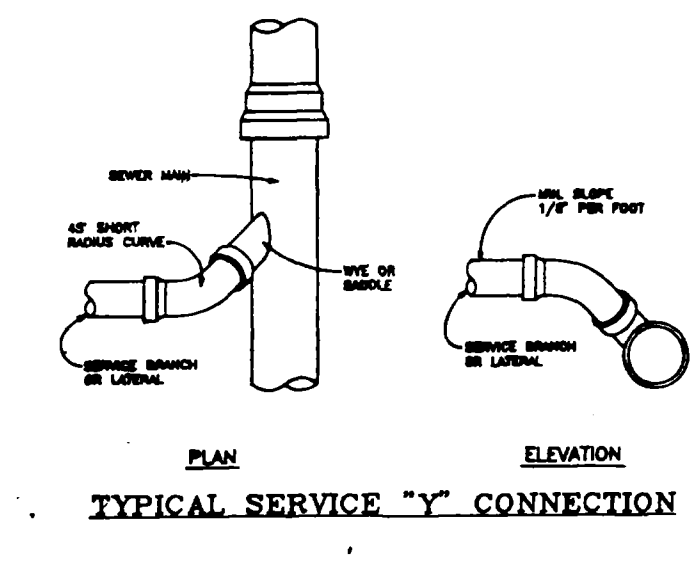
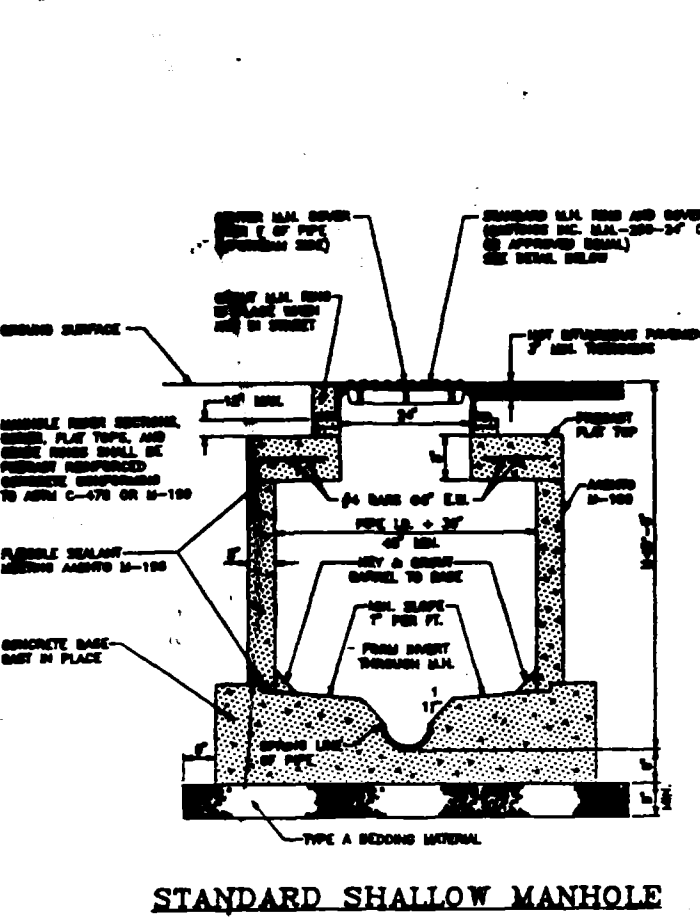
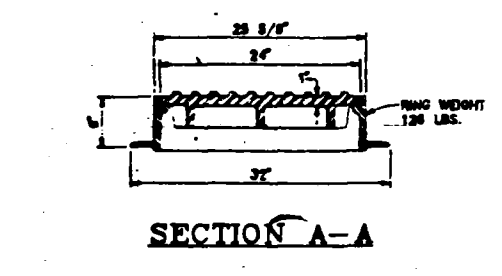
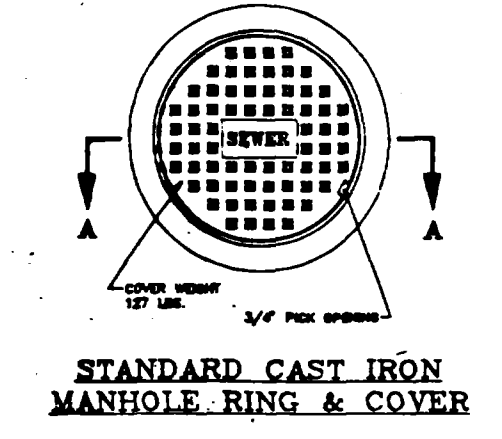
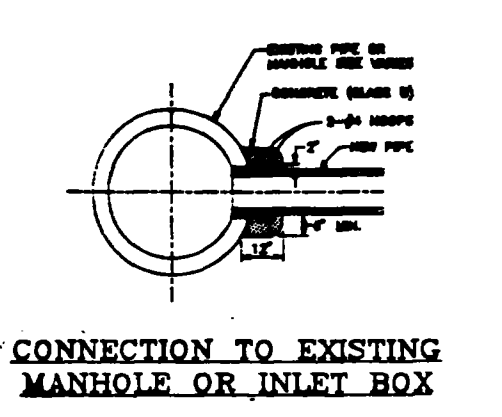
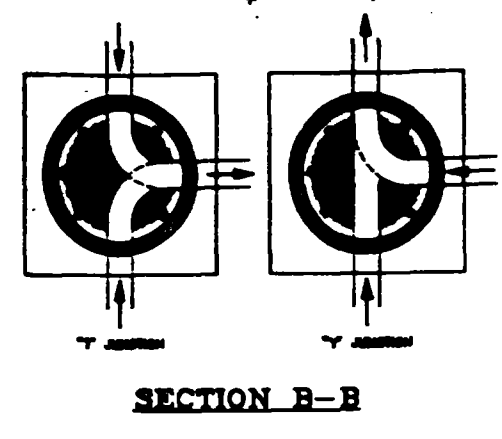
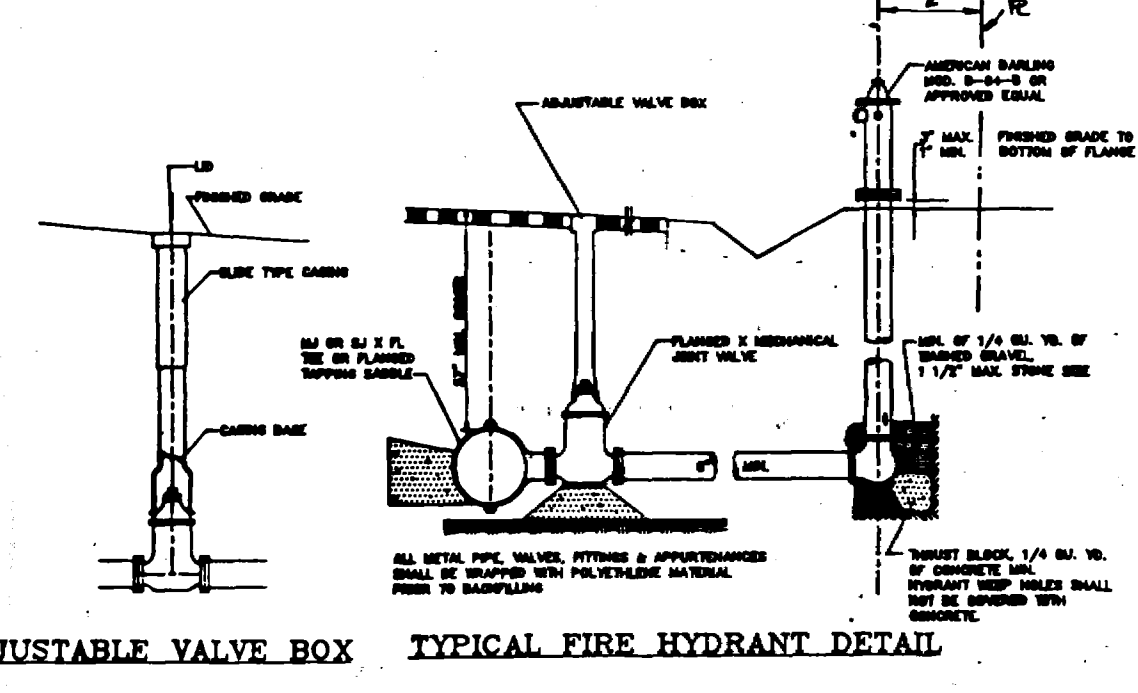
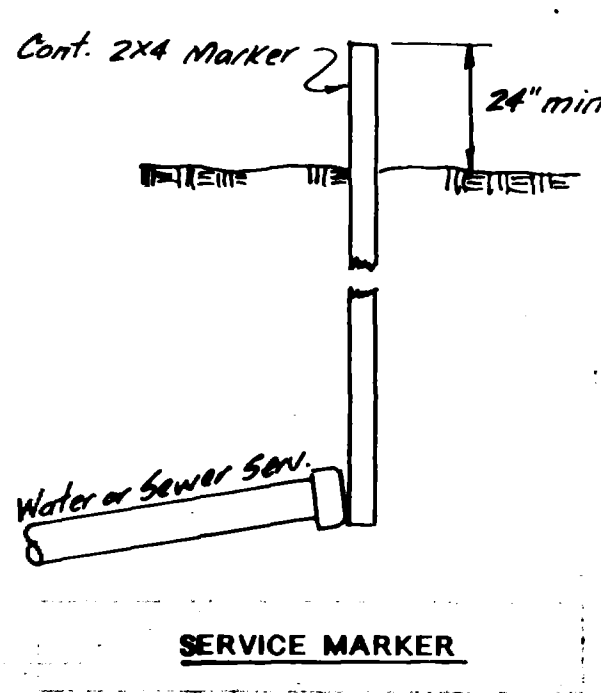


TABLE FOR CONCRETE THRUST BLOCKING
BEARING AREAS (IN SQ. FT.)

SIZE	RODS			MIN. BEARING AREA (SQ. FT.)
	NO.	DIAM.	SPACING	
2	1 1/2	3/8	8	8.7
4	1 1/2	3/8	8	17.4
6	1 1/2	3/8	8	26.1
8	1 1/2	3/8	8	34.8
10	1 1/2	3/8	8	43.5
12	1 1/2	3/8	8	52.2
14	1 1/2	3/8	8	60.9
16	1 1/2	3/8	8	69.6
18	1 1/2	3/8	8	78.3
20	1 1/2	3/8	8	87.0
22	1 1/2	3/8	8	95.7
24	1 1/2	3/8	8	104.4
26	1 1/2	3/8	8	113.1
28	1 1/2	3/8	8	121.8
30	1 1/2	3/8	8	130.5
32	1 1/2	3/8	8	139.2
34	1 1/2	3/8	8	147.9
36	1 1/2	3/8	8	156.6
38	1 1/2	3/8	8	165.3
40	1 1/2	3/8	8	174.0
42	1 1/2	3/8	8	182.7
44	1 1/2	3/8	8	191.4
46	1 1/2	3/8	8	200.1
48	1 1/2	3/8	8	208.8
50	1 1/2	3/8	8	217.5
52	1 1/2	3/8	8	226.2
54	1 1/2	3/8	8	234.9
56	1 1/2	3/8	8	243.6
58	1 1/2	3/8	8	252.3
60	1 1/2	3/8	8	261.0
62	1 1/2	3/8	8	269.7
64	1 1/2	3/8	8	278.4
66	1 1/2	3/8	8	287.1
68	1 1/2	3/8	8	295.8
70	1 1/2	3/8	8	304.5
72	1 1/2	3/8	8	313.2
74	1 1/2	3/8	8	321.9
76	1 1/2	3/8	8	330.6
78	1 1/2	3/8	8	339.3
80	1 1/2	3/8	8	348.0
82	1 1/2	3/8	8	356.7
84	1 1/2	3/8	8	365.4
86	1 1/2	3/8	8	374.1
88	1 1/2	3/8	8	382.8
90	1 1/2	3/8	8	391.5
92	1 1/2	3/8	8	400.2
94	1 1/2	3/8	8	408.9
96	1 1/2	3/8	8	417.6
98	1 1/2	3/8	8	426.3
100	1 1/2	3/8	8	435.0



- GENERAL NOTES:
- ALL STRUCTURES SHALL BE CONSTRUCTED IN ACCORDANCE WITH THE SPECIFICATIONS OF THE STANDARD SPECIFICATIONS FOR HIGHWAY CONSTRUCTION, LATEST EDITION, AS APPLICABLE TO THIS PROJECT.
 - ALL STRUCTURES SHALL BE CONSTRUCTED WITH A MINIMUM OF 12" OF CONCRETE ENCASEMENT.
 - ALL STRUCTURES SHALL BE CONSTRUCTED WITH A MINIMUM OF 12" OF CONCRETE ENCASEMENT.
 - ALL STRUCTURES SHALL BE CONSTRUCTED WITH A MINIMUM OF 12" OF CONCRETE ENCASEMENT.
 - ALL STRUCTURES SHALL BE CONSTRUCTED WITH A MINIMUM OF 12" OF CONCRETE ENCASEMENT.

MOMENT VALLEY FILING NO. 4
 MESA COUNTY COLORADO
 OWNED AND DEVELOPED BY: DAVID L. FLETCHER, PO Box 921, Grand Junction, CO (973) 245-7398
 SEWER PROFILE & DETAIL SHEET

DRAWN	TAL
CHECKED	PHO
DATE	JUNE 1992
SCALE	As Shown
JOB NO.	
SHEET	WS 2
OF 2 SHEETS	