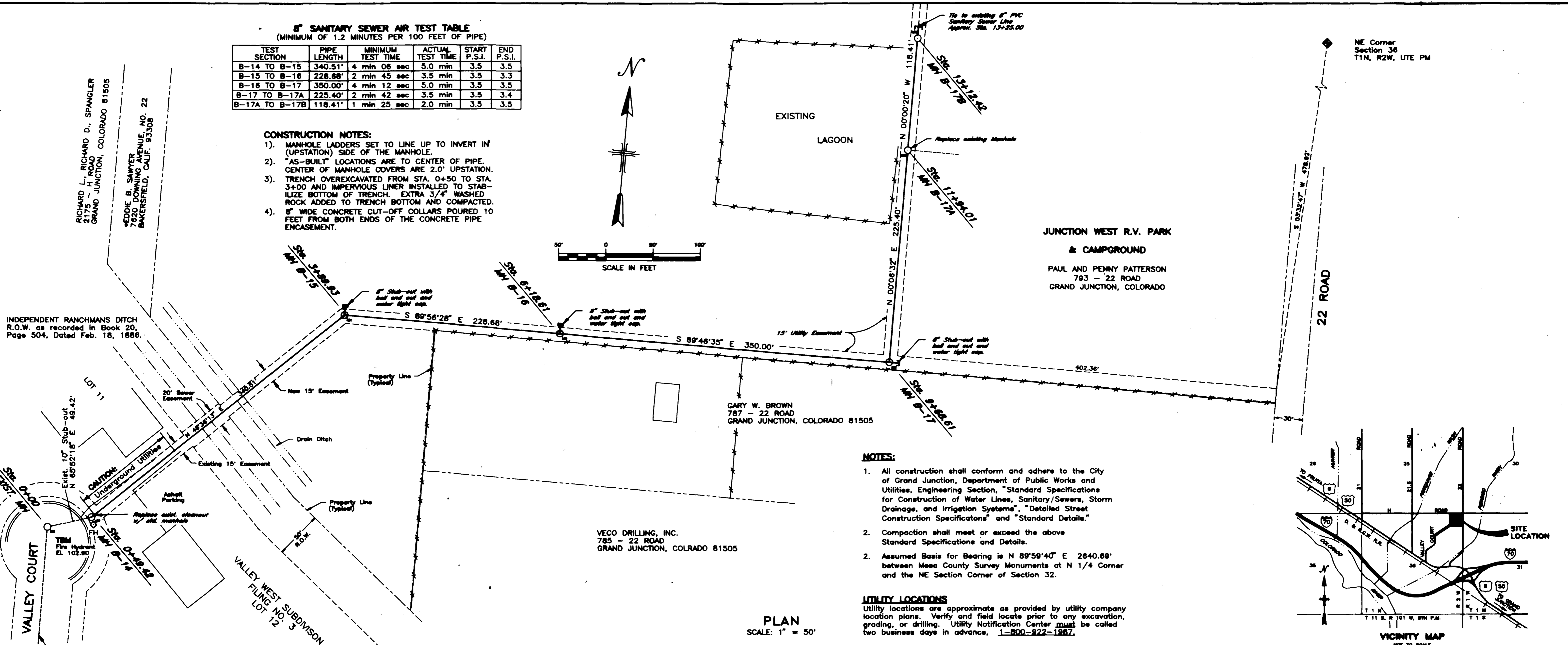


8" SANITARY SEWER AIR TEST TABLE
(MINIMUM OF 1.2 MINUTES PER 100 FEET OF PIPE)

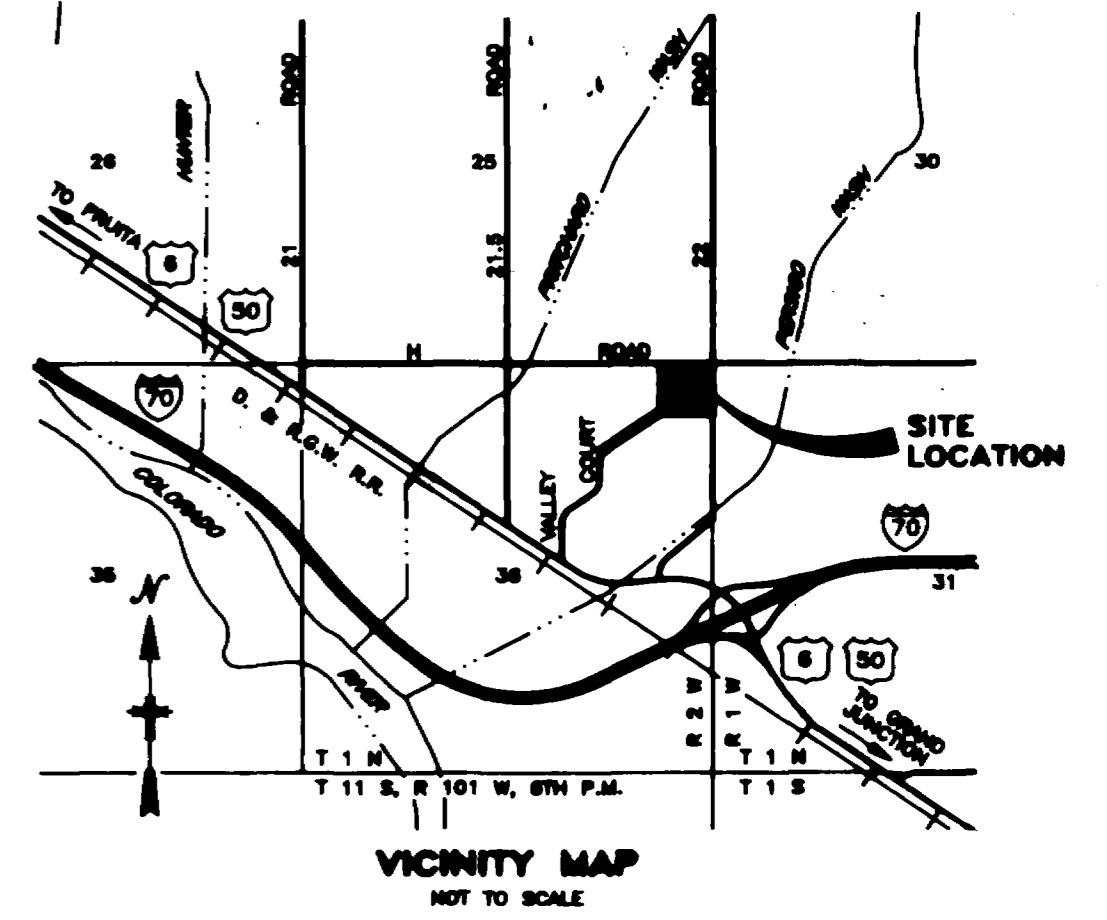
TEST SECTION	PIPE LENGTH	MINIMUM TEST TIME	ACTUAL TEST TIME	START P.S.I.	END P.S.I.
B-14 TO B-15	340.51'	4 min 06 sec	5.0 min	3.5	3.5
B-15 TO B-16	228.68'	2 min 45 sec	3.5 min	3.5	3.3
B-16 TO B-17	350.00'	4 min 12 sec	5.0 min	3.5	3.5
B-17 TO B-17A	225.40'	2 min 42 sec	3.5 min	3.5	3.4
B-17A TO B-17B	118.41'	1 min 25 sec	2.0 min	3.5	3.5

- CONSTRUCTION NOTES:**
- 1). MANHOLE LADDERS SET TO LINE UP TO INVERT IN (UPSTATION) SIDE OF THE MANHOLE.
 - 2). "AS-BUILT" LOCATIONS ARE TO CENTER OF PIPE. CENTER OF MANHOLE COVERS ARE 2.0' UPSTATION.
 - 3). TRENCH OVEREXCAVATED FROM STA. 0+50 TO STA. 3+00 AND IMPERVIOUS LINER INSTALLED TO STABILIZE BOTTOM OF TRENCH. EXTRA 3/4" WASHED ROCK ADDED TO TRENCH BOTTOM AND COMPACTED.
 - 4). 8" WIDE CONCRETE CUT-OFF COLLARS POURED 10 FEET FROM BOTH ENDS OF THE CONCRETE PIPE EMBASEMENT.

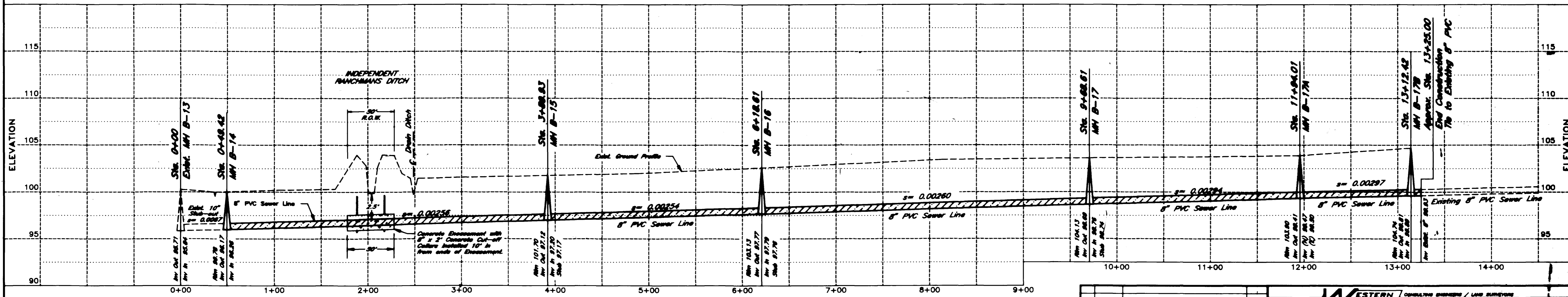


- NOTES:**
1. All construction shall conform and adhere to the City of Grand Junction, Department of Public Works and Utilities, Engineering Section, "Standard Specifications for Construction of Water Lines, Sanitary/Sewers, Storm Drainage, and Irrigation Systems", "Detailed Street Construction Specifications" and "Standard Details."
 2. Compaction shall meet or exceed the above Standard Specifications and Details.
 2. Assumed Basis for Bearing is N 89°59'40" E 2640.89' between Mesa County Survey Monuments at N 1/4 Corner and the NE Section Corner of Section 32.

UTILITY LOCATIONS
Utility locations are approximate as provided by utility company location plans. Verify and field locate prior to any excavation, grading, or drilling. Utility Notification Center must be called two business days in advance, 1-800-922-1987.



PLAN
SCALE: 1" = 50'



PROFILE
SCALE: HORIZ. 1" = 50'
VERT. 1" = 5'

		<p>"AS-BUILTS" FOR JUNCTION WEST R/V PARK & CAMPGROUND SEWER PLAN & PROFILE</p> <p>793 - 22 ROAD GRAND JUNCTION, COLORADO</p>		<p>DESIGN: lrg CHECKED: lrg DATE: 12-2-1991</p>	<p>APPROVED: lrg WEB DATE NO.: 3027-1163-2</p>	<p>SHEET 1 OF 1</p>