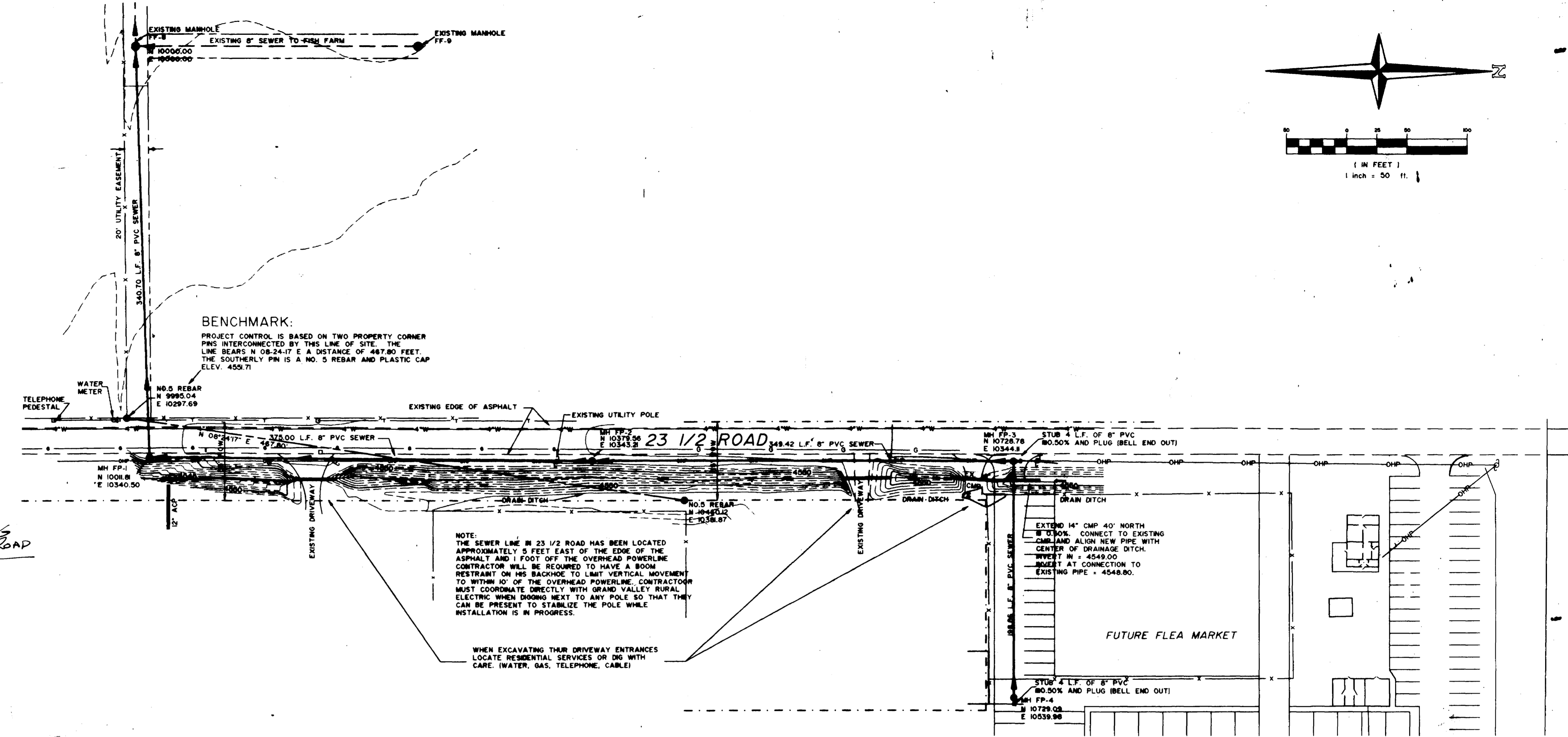


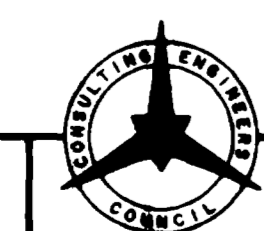
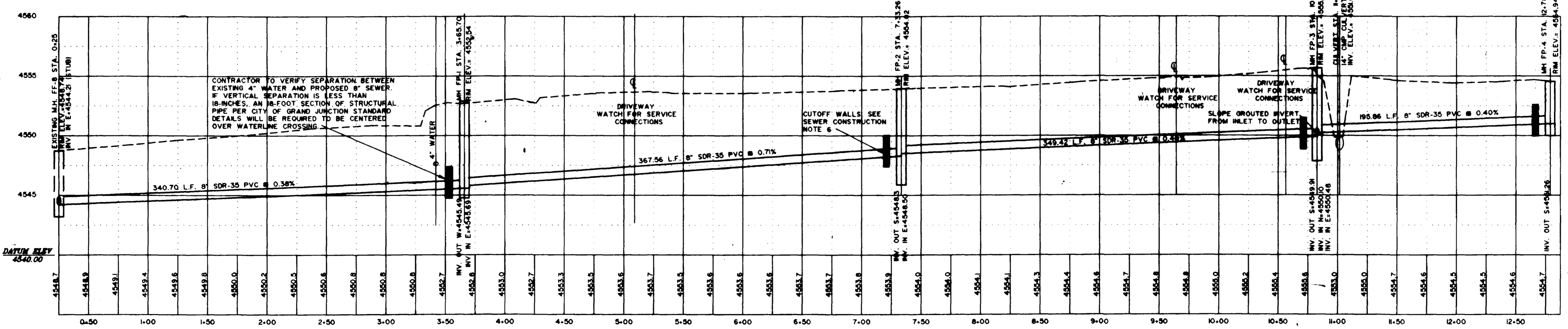
- GENERAL CONSTRUCTION NOTES**
1. LOCATIONS OF EXISTING UTILITIES WERE MADE FROM UTILITY MAPS. FIELD LOCATIONS OF SURFACE MARKINGS PLACED BY UTILITY COMPANIES AND THE SEWER CONSTRUCTION DRAWINGS PREPARED BY WESTWATER ENGINEERING FOR FISH FARMS, INC. DATED 8-25-93. LOCATIONS ARE TO BE CONSIDERED APPROXIMATE ONLY. CONTRACTOR TO CONTACT AFFECTED UTILITIES FOR SPECIFIC LOCATIONS BEFORE DIGGING.
 2. CONTRACTOR SHALL GIVE 24 HOUR NOTICE TO ALL AUTHORIZED INSPECTORS, SUPERINTENDENTS, OR PERSONS IN CHARGE OF PUBLIC AND PRIVATE UTILITIES AFFECTED BY THIS OPERATION PRIOR TO COMMENCEMENT OF WORK.
 3. CONTRACTOR SHALL ASSURE HIMSELF THAT ALL CONSTRUCTION PERMITS HAVE BEEN OBTAINED PRIOR TO COMMENCEMENT OF WORK. ALL PERMITS OBTAINABLE BY THE CONTRACTOR SHALL BE OBTAINED AT THE CONTRACTOR'S EXPENSE.
 4. CONTRACTOR SHALL CONFINE HIS CONSTRUCTION OPERATIONS TO THE EASEMENTS AND RIGHT-OF-WAYS AS SHOWN. ANY DAMAGE TO PRIVATE FACILITIES OUTSIDE THESE LIMITS SHALL BE REPAIRED BY THE CONTRACTOR AT NO EXPENSE TO THE OWNER.
 5. ALL ROAD REPAIRS AND RELATED WORK, ALL MATERIALS, PERFORMANCE AND QUALITY OF WORK SHALL CONFORM TO THE REQUIREMENTS OF THE CITY OF GRAND JUNCTION TECHNICAL SPECIFICATIONS AND DETAILS.

- SANITARY SEWER CONSTRUCTION NOTES**
1. MANHOLES ARE TO BE CONSTRUCTED IN ACCORDANCE WITH THE CITY OF GRAND JUNCTION TYPICAL DETAILS. CARE SHALL BE TAKEN IN FORMING THE INVERTS. COMES ARE TO BE ROTATED SUCH THAT OPENINGS ARE ALIGNED AS NEARLY AS POSSIBLE OVER THE INLET TO THE MANHOLE. THERE ARE TO BE NO STEPS INSIDE THE MANHOLES.
 2. WATER STOP GASKETS AND CLAMP ASSEMBLIES ARE TO BE FURNISHED AND INSTALLED AT ALL CONNECTIONS TO MANHOLES.
 3. WHERE SANITARY SEWERS CROSS UNDER WATERLINES WITH LESS THAN 18-INCHES OF COVER, AND IN ALL CASES WHERE THE SANITARY SEWER CROSSES OVER THE WATERLINE AT ANY DEPTH, PROVIDE AN 18-FOOT SECTION OF STRUCTURAL PIPE (PVC C-300 OR DRI) PER THE CITY OF GRAND JUNCTION STANDARD DETAILS. STRUCTURAL PIPE IS TO BE CENTERED OVER THE WATERLINE CROSSING.
 4. ALL MATERIALS AND WORKMANSHIP SHALL BE SUBJECT TO THE INSPECTION OF THE CITY OF GRAND JUNCTION. THE CITY RESERVES THE RIGHT TO ACCEPT OR REJECT ANY MATERIALS OR WORKMANSHIP THAT DOES NOT CONFORM TO THEIR STANDARDS OR SPECIFICATIONS.
 5. THE CONTRACTOR SHALL HAVE ONE SIGNED COPY OF THIS PLAN AT THE JOB SITE AT ALL TIMES.
 6. SEWER IS TO BE BEDDED AND BACKFILLED USING CITY OF GRAND JUNCTION TYPE A GRANULAR STABILIZATION MATERIAL (SCREENED ROCK), TO A DEPTH OF 6-INCHES OVER SEWER LINE. TO PREVENT THE MOVEMENT OF GROUND WATER THROUGH THE SCREENED ROCK BEDDING MATERIAL, CUTOFF WALLS OF NATIVE MATERIAL ARE TO BE CONSTRUCTED APPROXIMATELY TEN FEET DOWN STREAM FROM EACH MANHOLE AS SHOWN. CUTOFF WALLS ARE TO BE THREE FEET THICK AND EXTEND TO THE UNDISTURBED TRENCH WALLS. BOTTOM OF EXCAVATION AND OVER THE PIPE TO THE LIMITS OF THE SCREENED ROCK BACKFILL.



NOTE:
THE SEWER LINE IN 23 1/2 ROAD HAS BEEN LOCATED APPROXIMATELY 5 FEET EAST OF THE EDGE OF THE ASPHALT AND 1 FOOT OFF THE OVERHEAD POWERLINE. CONTRACTOR WILL BE REQUIRED TO HAVE A BOOM RESTRAINT ON HIS BACKHOE TO LIMIT VERTICAL MOVEMENT TO WITHIN 10' OF THE OVERHEAD POWERLINE. CONTRACTOR MUST COORDINATE DIRECTLY WITH GRAND VALLEY RURAL ELECTRIC WHEN DIGGING NEXT TO ANY POLE SO THAT THEY CAN BE PRESENT TO STABILIZE THE POLE WHILE INSTALLATION IS IN PROGRESS.

WHEN EXCAVATING THEIR DRIVEWAY ENTRANCES LOCATE RESIDENTIAL SERVICES OR DIG WITH CARE. (WATER, GAS, TELEPHONE, CABLE)



THOMPSON-LANGFORD CORP.
529 25 1/2 RD., SUITE B210
GRAND JUNCTION, COLORADO
PH. (303) 243-8067

REVISION	DATE	DESCRIPTION	BY	CHKD
E1	6/3/93	ADD STUB-OUT/CHANGE BEDDING MATERIAL/ADD NOTE CONCERNING RESIDENTIAL SERVICES	JEL	

LEEE COURTNEY
CITY OF GRAND JUNCTION
FRONTIER PARK SANITARY SEWER

ASBUILT 8/25/93
BY: [Signature] DATE: 8/13/93

SCALE: Horiz: 1" = 50'
Vert: 1" = 5'

Project No: 0049-002
DATE: 5/27/93
SHEET NO: 1 OF 2

DRAWN BY: M.W.T.
REVIEWED: _____ FOR _____
DATE: _____

CHECKED BY: J.E.L.
REVIEWED: _____
DATE: _____