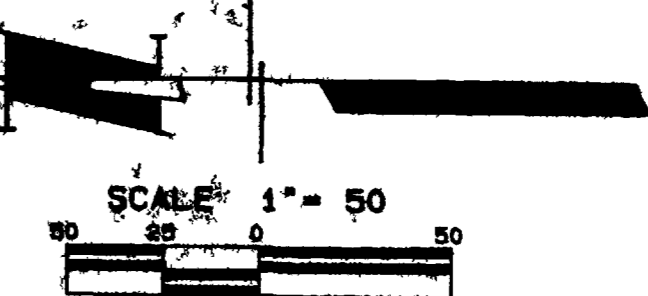


GENERAL NOTES

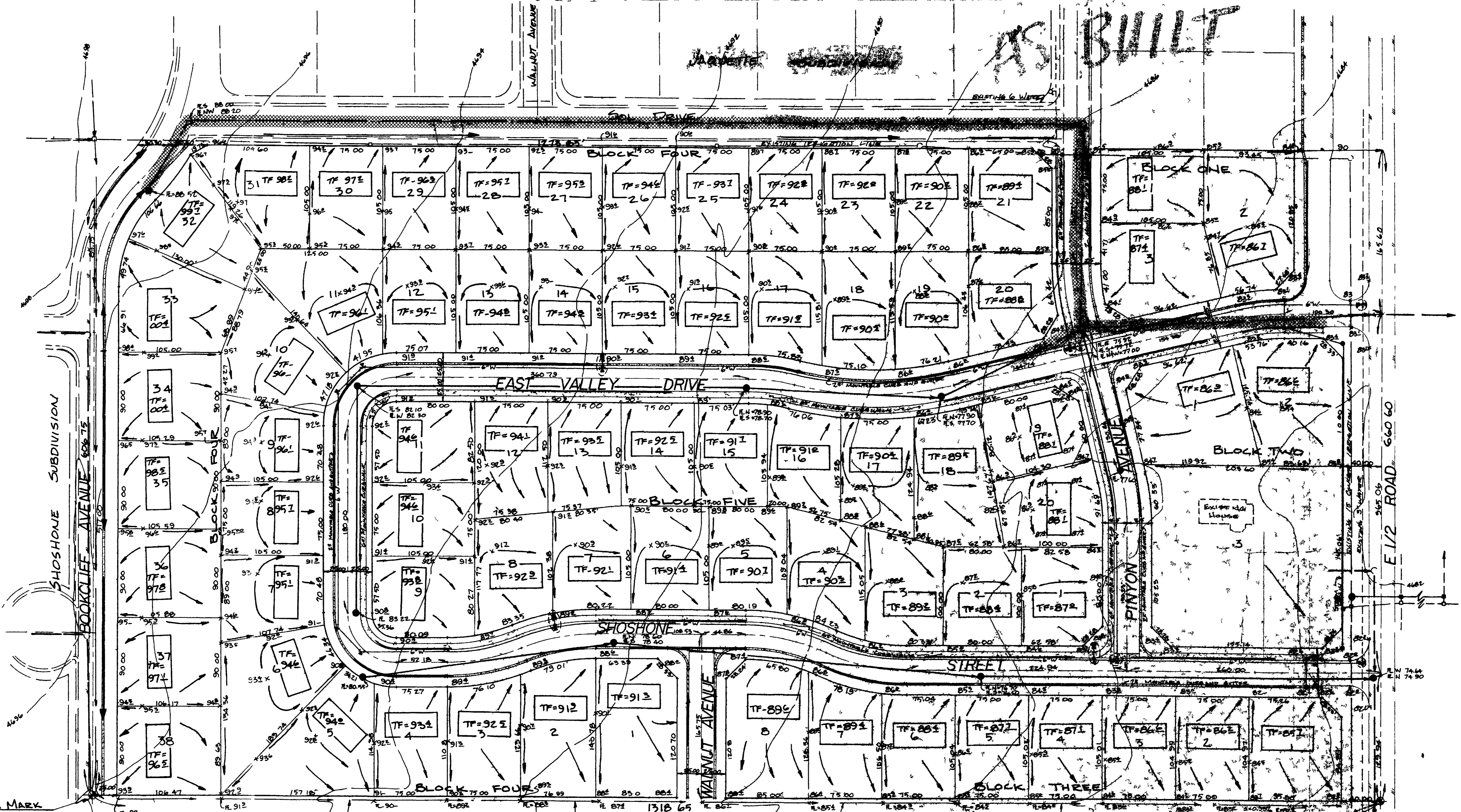
- The minimum slope on pervious surfaces shall be 2%
- The high point in the protective swales around houses shall have a minimum 5% slope on all protective slopes
- A minimum dimension from top of foundation to finished grade = 8"
- Slopes of 3:1 or steeper shall be developed with appropriate erosion control
- The minimum driveway centerline grade shall be 2.5%
- The maximum driveway centerline grade shall be 5%
- Sanitary sewer service shall have a minimum slope of 1/8" per foot
- The minimum street centerline grade shall be 2.5%
- Street design shall be such that the 100-year storm can be carried completely above ground without entrance to any houses



KFM/JTP
9-20-83
AS SHOWN

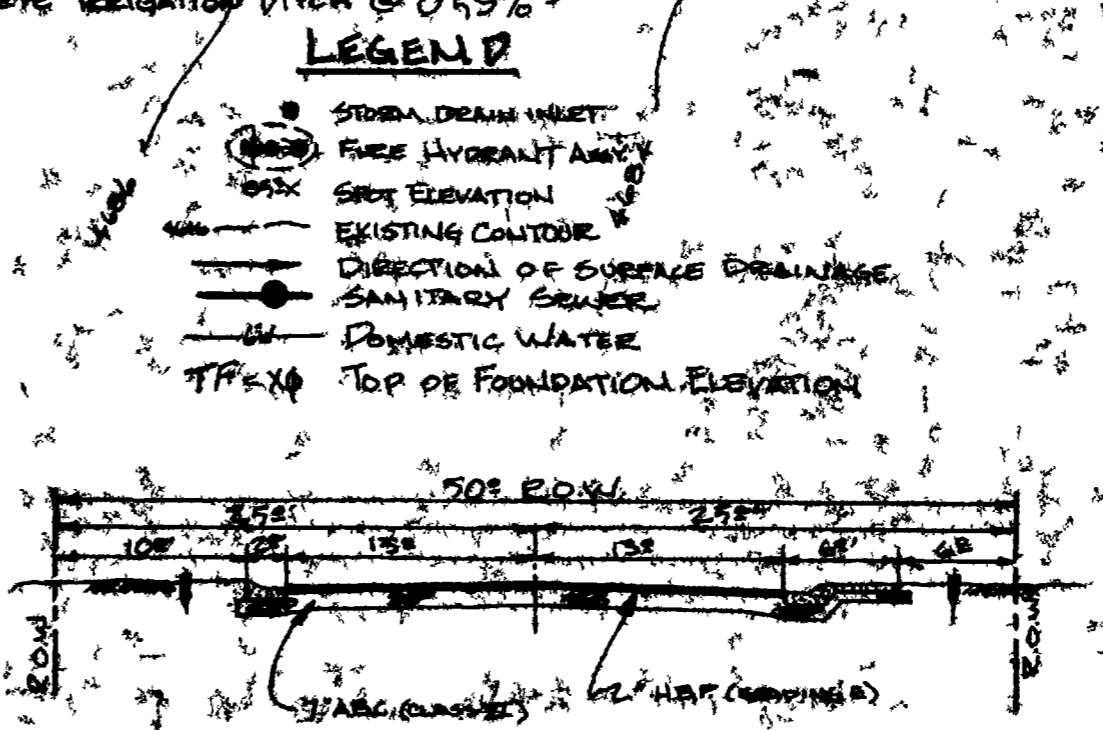
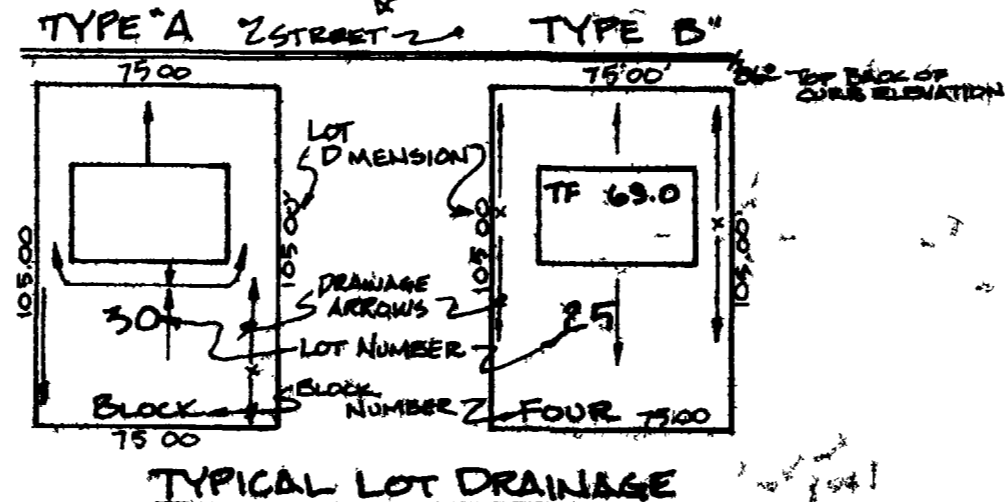
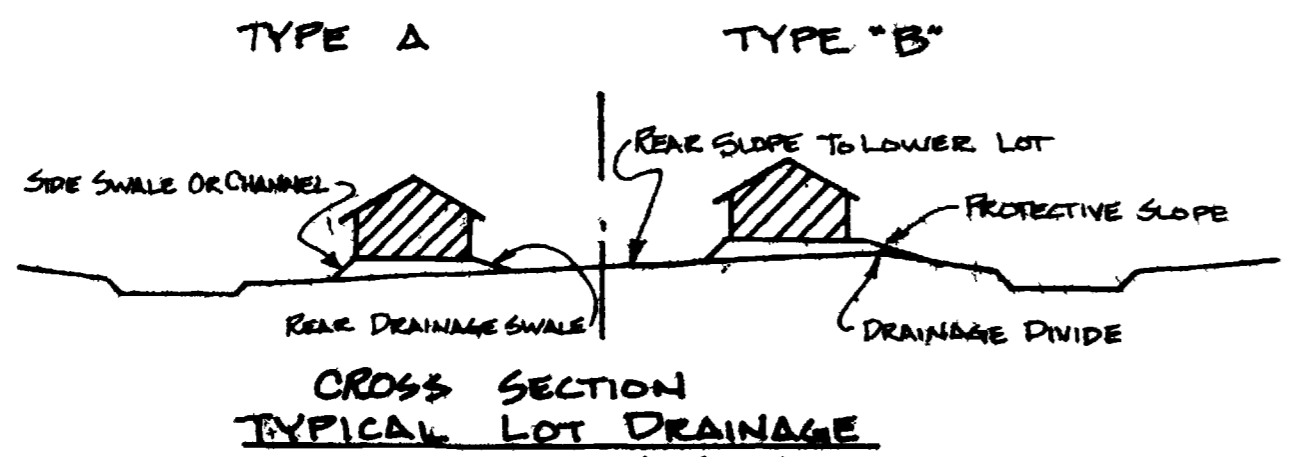
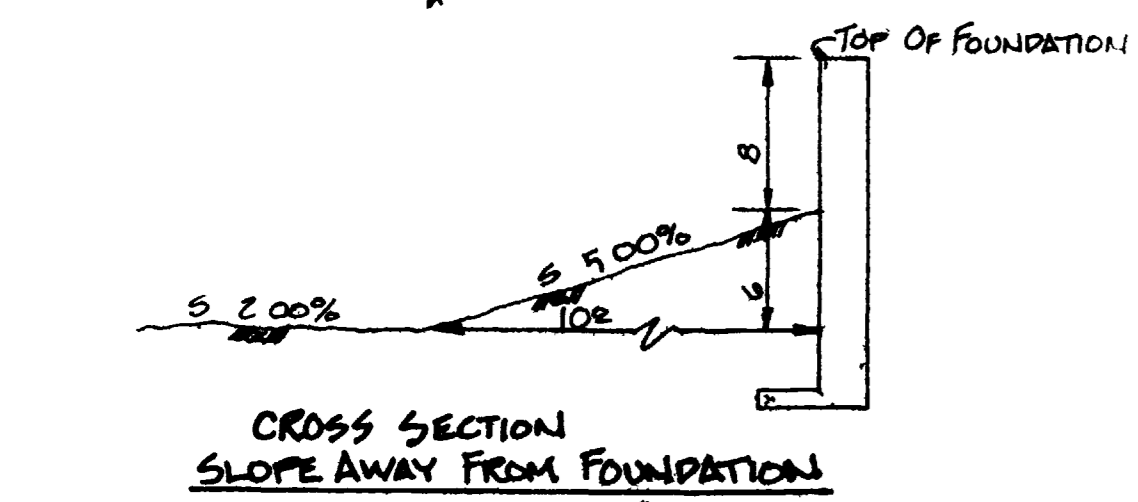
PARAGON
ENGINEERING
INCORPORATED

WHITEWOOD SUBDIVISION



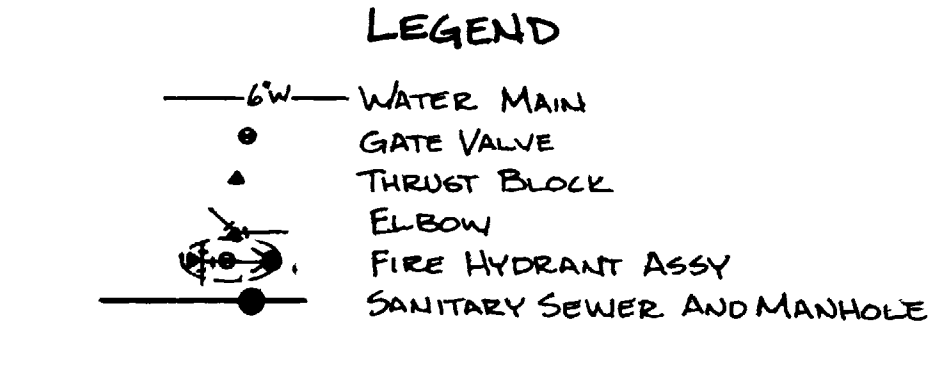
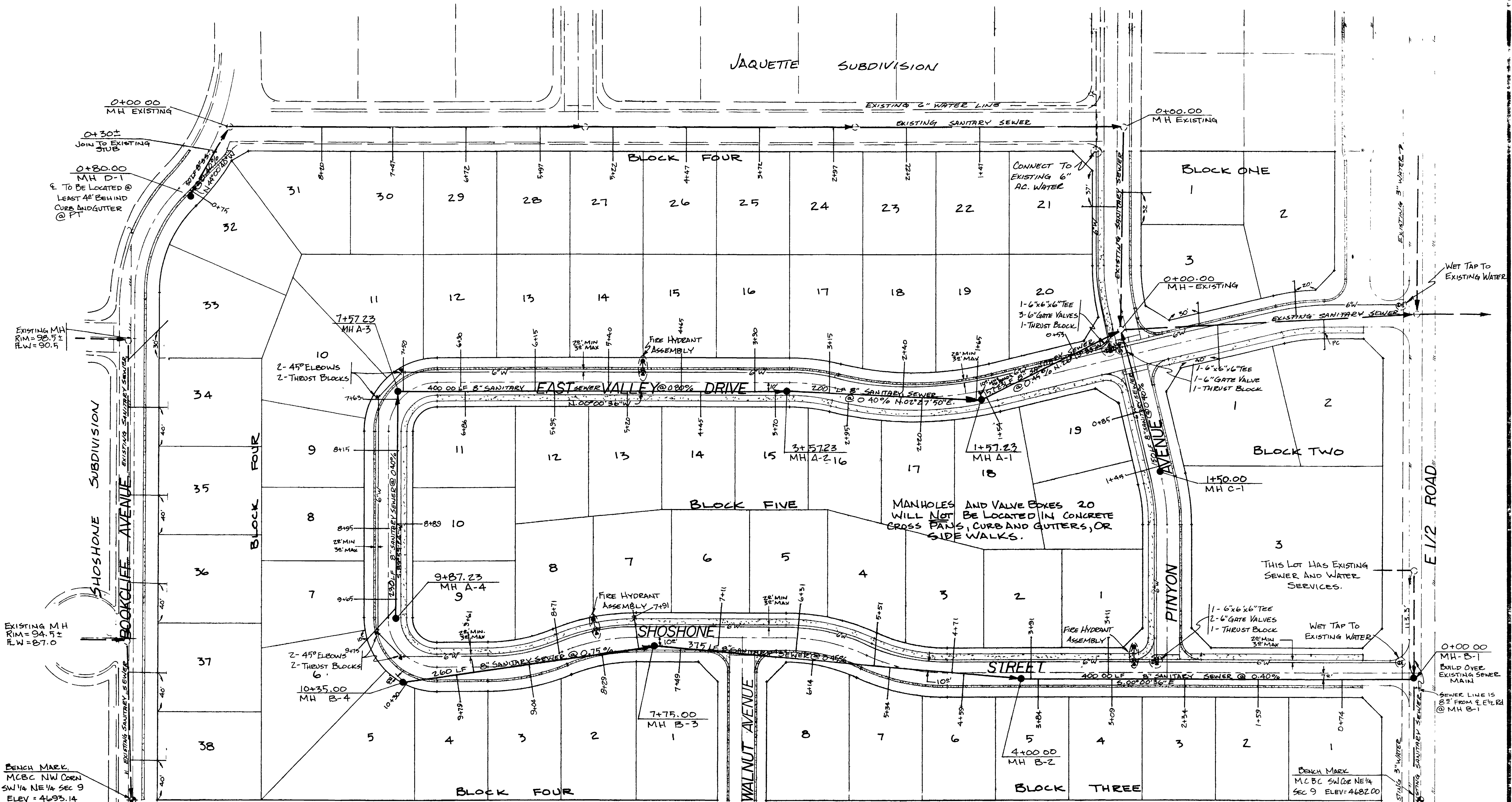
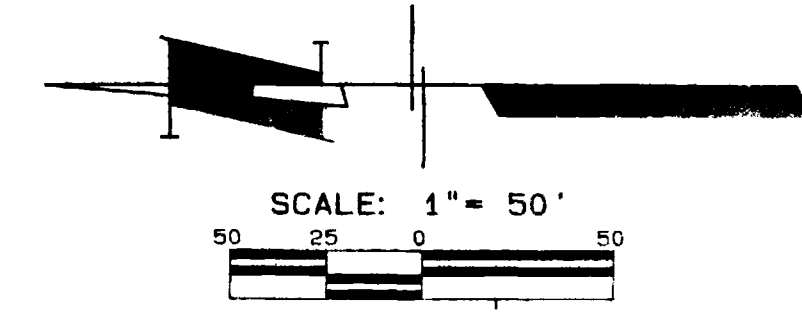
BENCH MARK
MESA COUNTY BRASS CAP
NW CORNER SW 1/4 NE 1/4
SECTION 9 ELEV 4693.14

BENCH MARK
MESA COUNTY BRASS CAP
SW CORNER NE 1/4 SECTION 9
ELEVATION + 4692.00



DESCRIPTION
FHA-VA
DEVELOPMENT
PLAN

1
1



QUANTITIES

SEWER	
8" SEWER MAIN	2222 LF ±
MANHOLES	9 EA.
LATERAL SERVICES	71 EA.
CONNECTIONS TO EXISTING MANHOLES	2 EA.
MANHOLE BUILT OVER EXISTING SEWER MAINS	1 EA.

- GENERAL NOTES**
- ① ALL WATER MAINS AND APPURTENANCES SHALL BE CONSTRUCTED IN ACCORDANCE WITH CLIFTON WATER DISTRICT SPECIFICATIONS, LATEST REVISIONS, BY CLIFTON WATER DISTRICT.
 - ② ALL WATER SERVICES SHALL EXTEND TO THE METER PIT LOCATION AT R.O.W. LINE.
 - ③ ALL WATER SERVICES SHALL MAINTAIN A MINIMUM OF 10' SEPARATION FROM SEWER SERVICES AND SHALL BE LOCATED UPSTREAM FROM SANITARY SEWER, AS POSSIBLE.
 - ④ ALL SEWER MAINS AND APPURTENANCES SHALL BE CONSTRUCTED IN ACCORDANCE WITH CENTRAL GRAND VALLEY SANITATION DISTRICT SPECIFICATIONS, LATEST REVISIONS.
 - ⑤ ALL SEWER LATERALS TO EXTEND 10' BEYOND PROPERTY LINE AND MARKED WITH A 2"x4" STAKE.

- ⑥ TOP OF ECCENTRIC CONE IS TO BE SET AT TOP OF STREET SUBGRADE. STREET CONTRACTOR IS TO SET MANHOLE RIMS TO FINISHED STREET GRADE.
- ⑦ CONTRACTOR IS TO LOCATE ALL BURIED SERVICES AND TO PROTECT SAME.

EXISTING UTILITIES ARE SHOWN AS DASHED LINES AND CALLED OUT.

- ① WATER MAIN IS TO BE TWO FEET MINIMUM THREE FOOT MAXIMUM OFF OF FRONT LIP OF CURB
- ② NO MANHOLES, VALVE BOXES, OR FIRE HYDRANTS ARE TO BE SET IN CONCRETE FILLET, CROSS PANS, CURB AND GUTTER, OR CURB WALK.

THIS DRAWING IS THE PROPERTY OF PARAGON ENGINEERING, INC. AND IS NOT TO BE REPRODUCED, COPIED, OR USED FOR ANY OTHER PROJECT OR EXTENSION OF THIS PROJECT EXCEPT BY AGREEMENT WITH PARAGON ENGINEERING, INC.

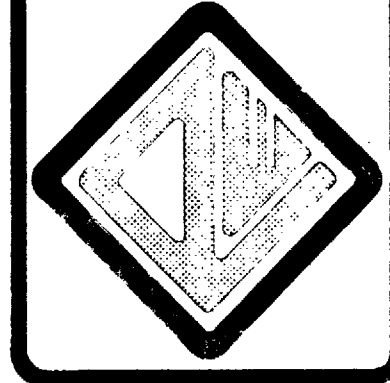
SANITARY SEWER AND WATER PLAN

PARAGON ENGINEERING INCORPORATED
2784 CROSSROADS BLVD SUITE 104
GRAND JUNCTION, COLORADO 81501 (303)243-8566

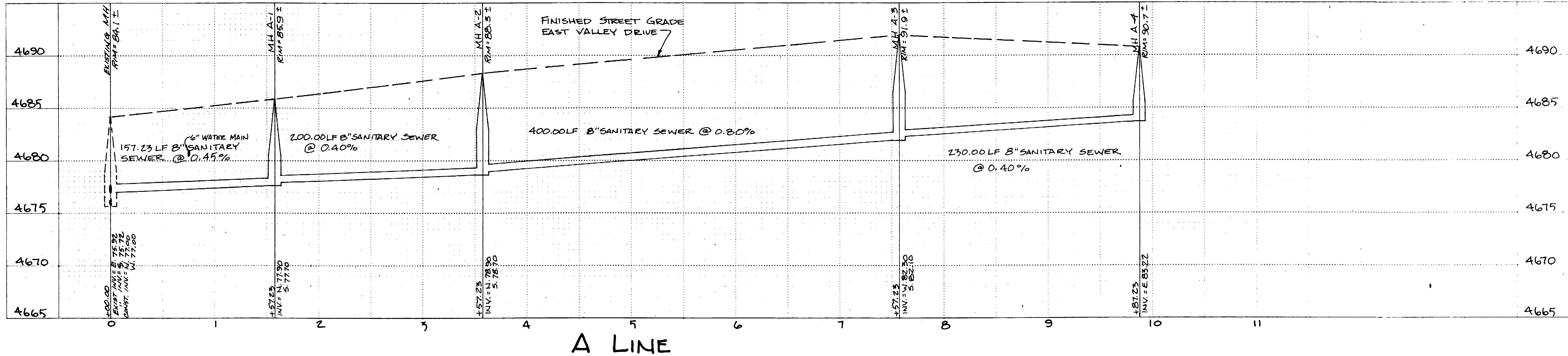
WHITEWOOD SUBDIVISION

KFM/JTP
 9-15-83
 1" = 5' VERT.
 50' HORIZ.

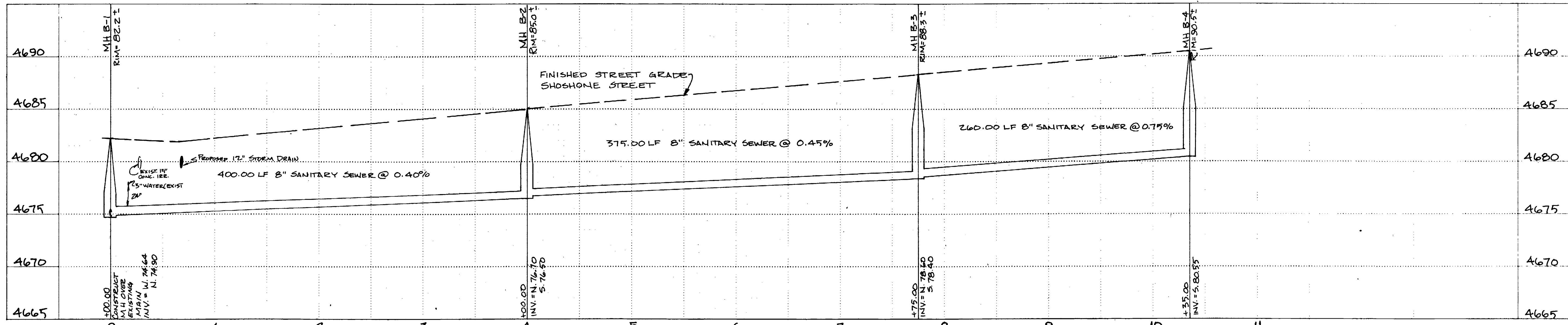
PARAGON
 ENGINEERING,
 INCORPORATED
 2784 W. HANCOCK ST., F.T. COLO.
 CHAND. ENGINEER, COLORADO



WHITEWOOD
 SUBDIVISION

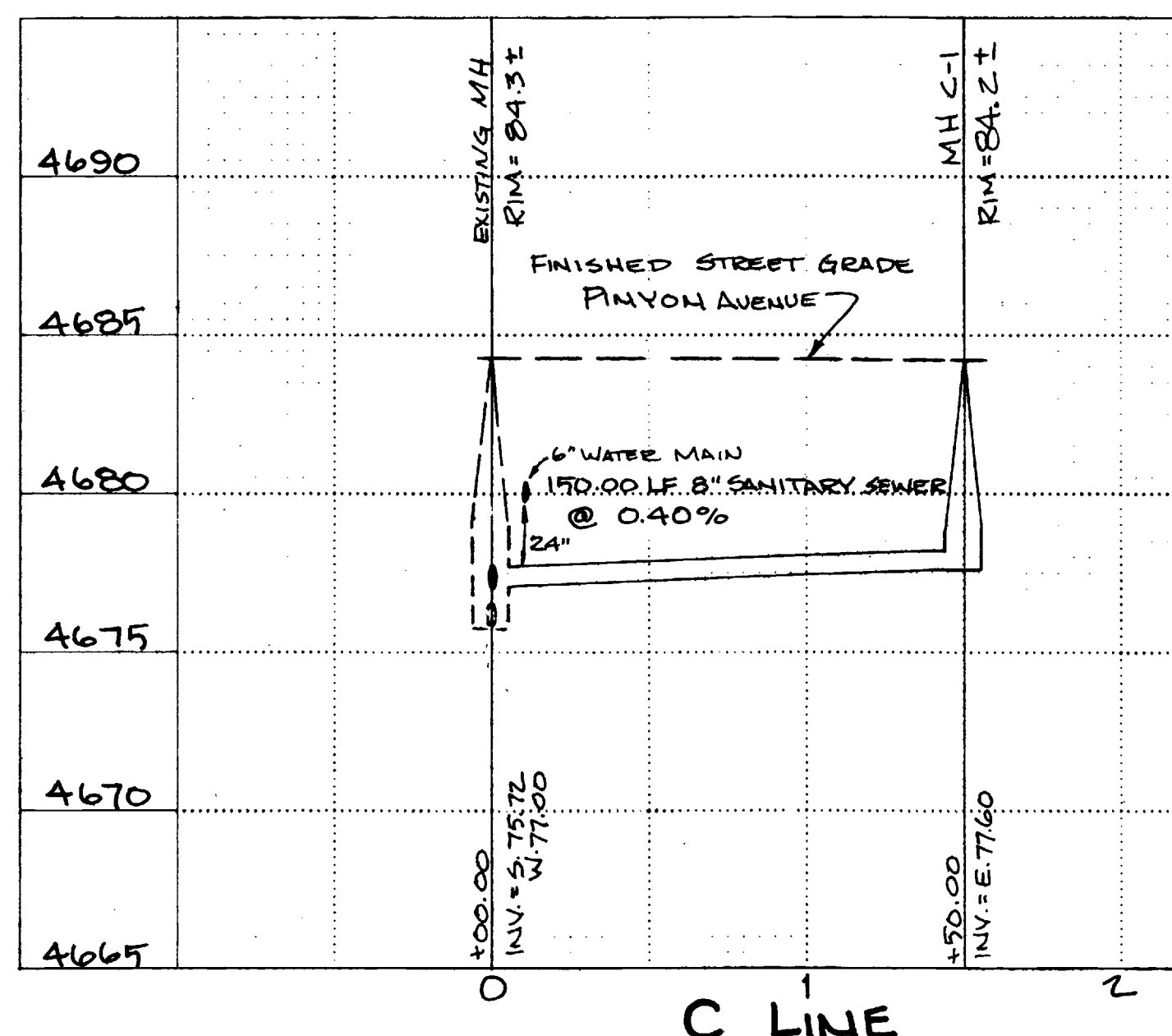


A LINE

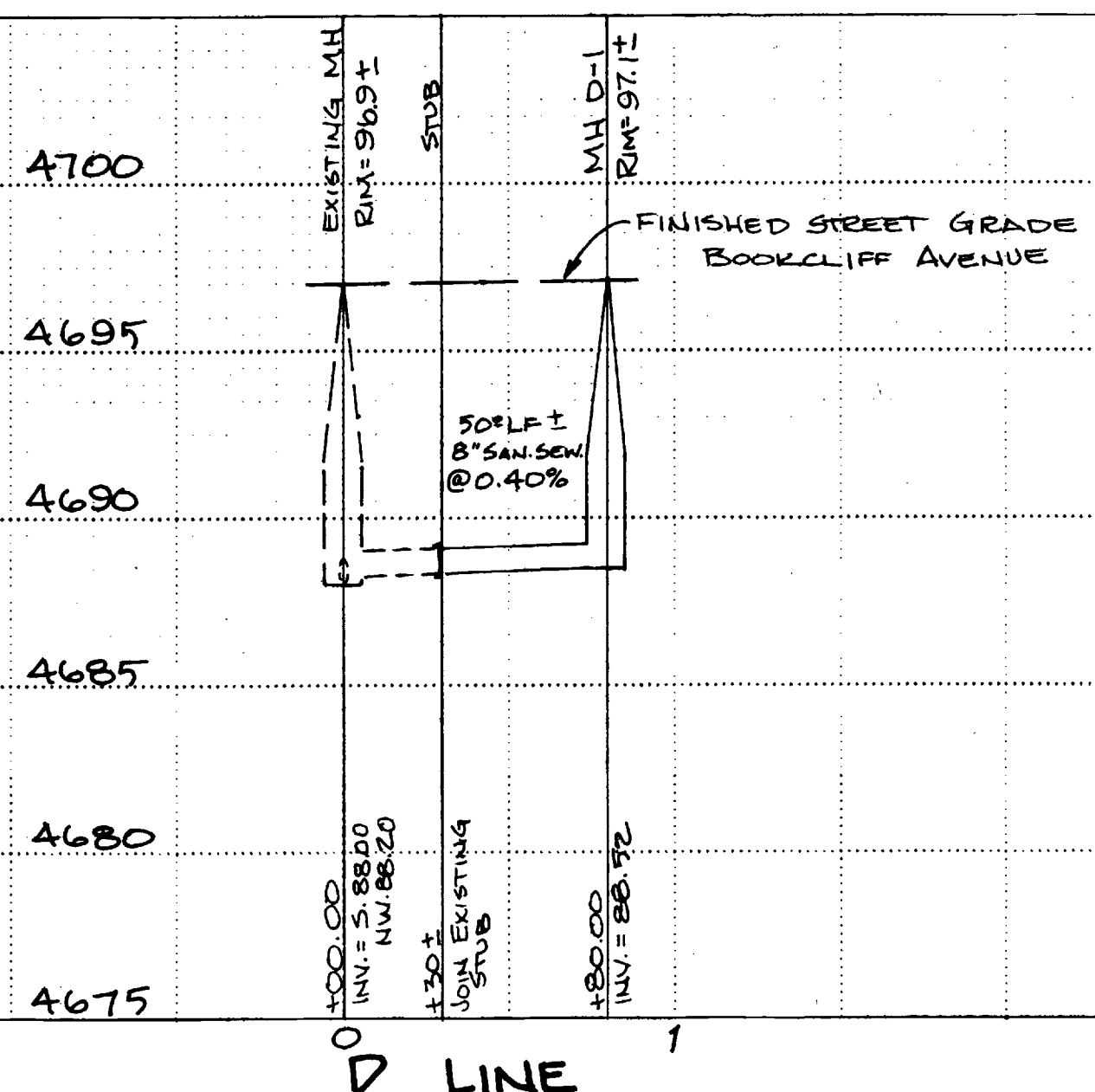


B LINE

THIS DRAWING IS THE PROPERTY OF PARAGON ENGINEERING, INC. AND IS NOT TO BE REPRODUCED, MODIFIED, OR USED FOR ANY OTHER PROJECT OR EXPANSION OF THIS PROJECT WITHOUT THE AGREEMENT WITH PARAGON ENGINEERING, INC.



C LINE



D LINE

DESCRIPTION
 SANITARY
 SEWER
 PROFILES

SHEET
 11
 OF 14

