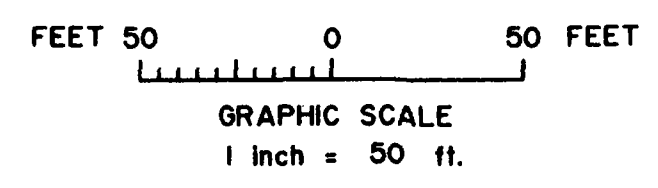


CONSTRUCTION DRAWING OF RECORD

ENGINEERS STATEMENT

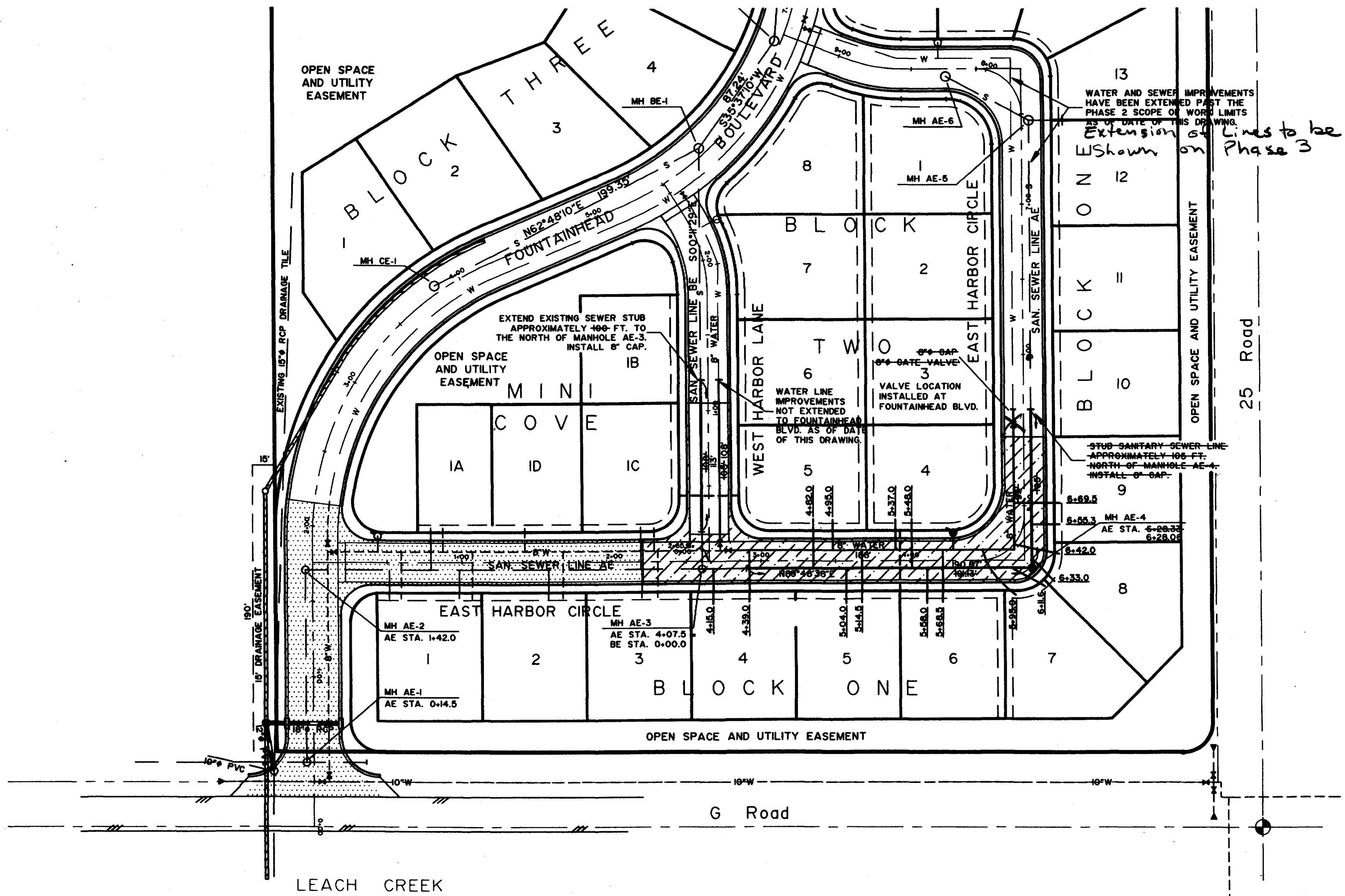
Banner Associates, Inc. reviewed the construction of the Sanitary Sewer and Domestic Water Systems for Phase 2 Improvements at Fountainhead Subdivision as shown on this plan and that to the best of our knowledge it conforms to the City of Grand Junction Standards and Specifications.

Banner Associates, Inc. Date



LEGEND

- EXISTING SANITARY SEWER/MANHOLE/SERVICE
- EXISTING WATERLINE/FIRE HYDRANT/SERVICE
- EXISTING STORM DRAIN/MANHOLE/INLET
- PHASE 2 SANITARY SEWER/MANHOLE/SERVICE
- PHASE 2 WATERLINE/FIRE HYDRANT/SERVICE
- FUTURE STORM DRAIN/MANHOLE
- FUTURE WATERLINE/FIRE HYDRANT/VALVE
- FUTURE SEWERLINE/MANHOLE
- PHASE 1 ROAD IMPROVEMENTS
- PHASE 2 ROAD IMPROVEMENTS

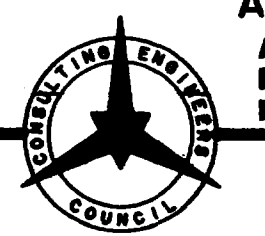


	PHASE ONE SANITARY SEWER	PHASE TWO SANITARY SEWER	
4600	AS PER CONSTRUCTION DRAWING OF RECORD, DATED 10-07-92		4600
4595	MANHOLE AE-1 AE STA. 0+14.5 RIM EL. = 4586.52	MANHOLE AE-3 AE STA. 4+07.5 BE STA. 0+00.0 RIM EL. = 4587.70	4595
4590	MANHOLE AE-2 AE STA. 1+42.0 RIM EL. = 4586.83	MANHOLE AE-4 AE STA. 6+28.06 RIM EL. = 4588.44	4590
4585	EAST HARBOR CIRCLE		4585
4580	STUB SANITARY SEWER APPROXIMATELY 180 FT. NORTH OF MANHOLE AE-4. INSTALL 8" CAP AT PIPE END.		4580
4575	S = 1.43%	S = 0.48%	4575
4570	AE 0+00	AE 2+00 AE 4+00 AE 6+00 AE 8+00	4570

	PHASE TWO SANITARY SEWER	PHASE TWO SANITARY SEWER	
4600	AS PER CONSTRUCTION DRAWING OF RECORD, DATED 10-07-92		4600
4595	MANHOLE AE-3 AE STA. 0+07.5 BE STA. 0+00.0 RIM EL. = 4587.70	MANHOLE AE-4 AE STA. 6+28.06 RIM EL. = 4588.44	4595
4590	WEST HARBOR LANE		4590
4585	STUB SANITARY SEWER APPROXIMATELY 140 FT. NORTH OF MANHOLE AE-3. INSTALL 8" CAP AT PIPE END.		4585
4580	STUB SANITARY SEWER APPROXIMATELY 180 FT. NORTH OF MANHOLE AE-4. INSTALL 8" CAP AT PIPE END.		4580
4575	S = 0.40%	S = 0.67%	4575
4570	BE 0+00	BE 2+00	4570

DRAWN BY: DEC
 REVIEWED: _____
 DATE: _____ FOR _____

CHECKED BY: DEC
 REVIEWED: _____
 DATE: _____ FOR BANNER ASSOCIATES, INC.



BANNER
 BANNER ASSOCIATES, INC. • CONSULTING ENGINEERS & SURVEYORS
 2777 CROSSROADS BOULEVARD • GRAND JUNCTION, CO 81506 • (303) 243-2242
 605 E. MAIN • SUITE 6 • ASPEN, CO 81611 • (303) 925-5857

REVISION	DATE	DESCRIPTION	BY	CHKD

FOUNTAINHEAD DEVELOPMENT CORP.
 GRAND JUNCTION, COLO.

**FOUNTAINHEAD SUBDIVISION
 PHASE 2 UTILITY IMPROVEMENTS**

SCALE: Horiz: 1" = 50'
 Vert: 1" = 5'
 DATE: 07-21-93
 Project No: 8229-06
 SHEET NO: 1 of 1

Rec 8-9-93