

MANHOLE #2-B
24" B LINE
DAD 15" LINE
RIM = 85.81
E (NORTH = 71.31
SOUTH = 71.06
EAST = 73.01

MANHOLE #6-1
Station 112
RIM = 87.17

MANHOLE #1-B-1
Station 1430
RIM = 78.76
E (EAST = 78.16
WEST = 79.11

MANHOLE #5-A
Station 1248
RIM = 46.45
E (NORTH = 35.25
SOUTH = 35.45

MANHOLE #6-A
Station 13475
RIM = 46.32
E (WEST = 46.72
SOUTH = 46.37

MANHOLE #2-F
Station 1142
RIM = 82.04
E = 72.77

MANHOLE #1-F
Station 2142
RIM = 71.55
E (EAST = 71.55
WEST = 72.04

MANHOLE #2-C
24" C LINE
DAD 15" LINE
RIM = 67.34
E (NORTH = 60.34
WEST = 60.84
SOUTH = 61.04

SEE SANITARY SEWER
OUTFALL LINE (SHEET 2)
OF 13

MANHOLE #1-A
Station 0120
RIM = 35.11
E (WEST = 26.01
NORTH = 26.71

MANHOLE #2-A
Station 3+38

MANHOLE #4-A1
Station 10723
RIM = 40.51
E (EAST = 32.86
SOUTH = 32.46

MANHOLE #4-A
Station 8195
RIM = 37.59
E (EAST = 31.59
WEST = 31.44

MANHOLE #3-A
Station 0150
RIM = 39.22
E (EAST = 28.67
WEST = 28.72
SOUTH = 29.07

MANHOLE #2-A
Station 3+38
RIM = 35.66
E (EAST = 28.01
WEST = 27.86

MANHOLE #1-C
Station 0150
RIM = 48.44
E (NORTH = 38.44
SOUTH = 38.64

MATCH LINE - SEE SHEET TWO

MATCH LINE - SEE SHEET TWO

NOTE: ROADWAY SUBGRADE IS 1 FOOT
BELOW FINISHED GRADE.

VERTICAL TOP OF ECCENTRIC CONE TO BE SET @ TOP OF SUBGRADE -
CONTRACTOR TO SET RIMS TO FINISHED GRADE
CONTRACTOR IS INTENDED TO BE LOCATED 5' DOWNSTREAM
FROM CORNER OF LOTS OR AS SHOWN ON PLANS AND EXTEND
10' BEYOND PROPERTY LINE.

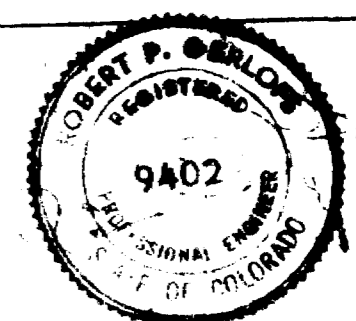
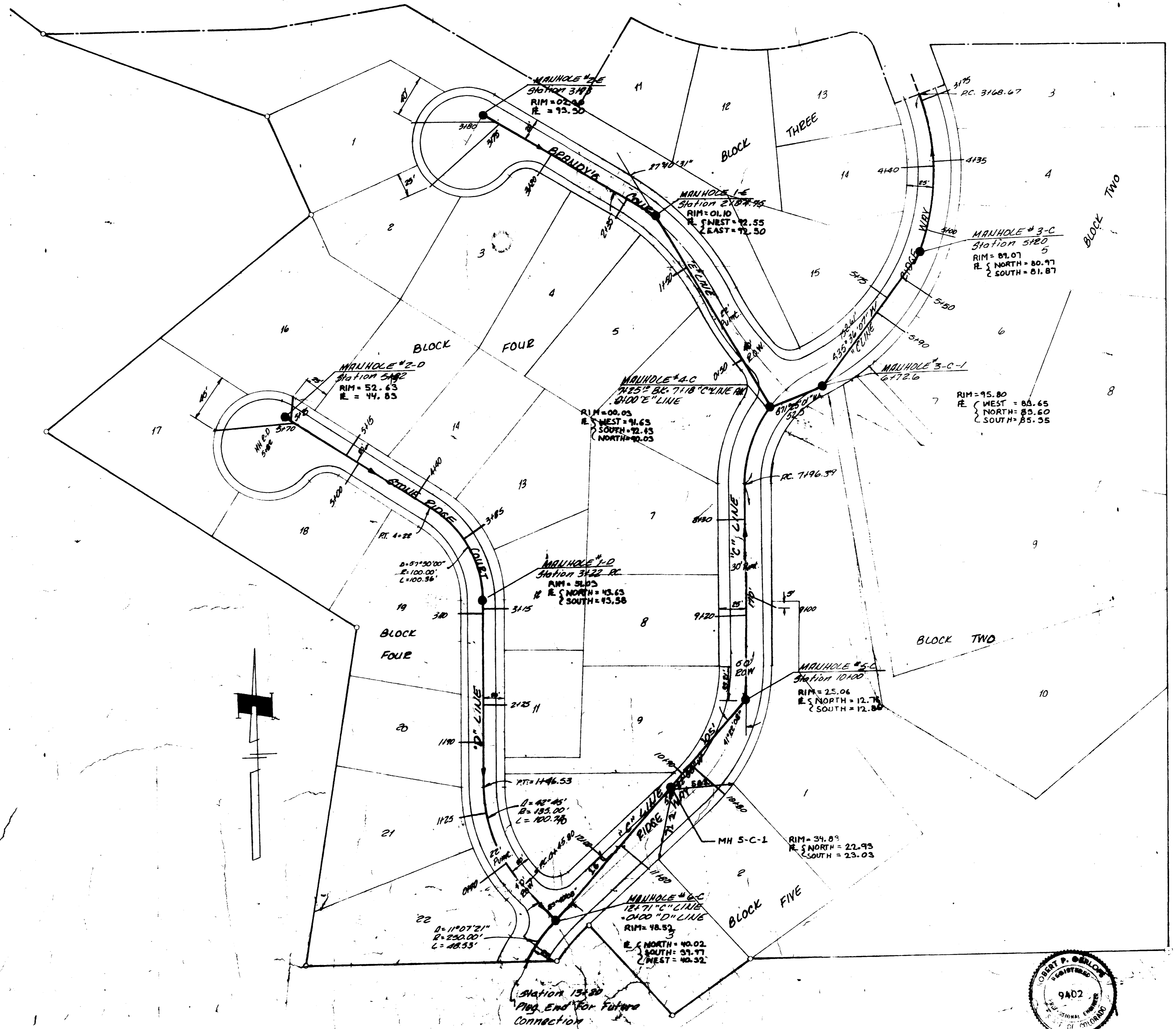


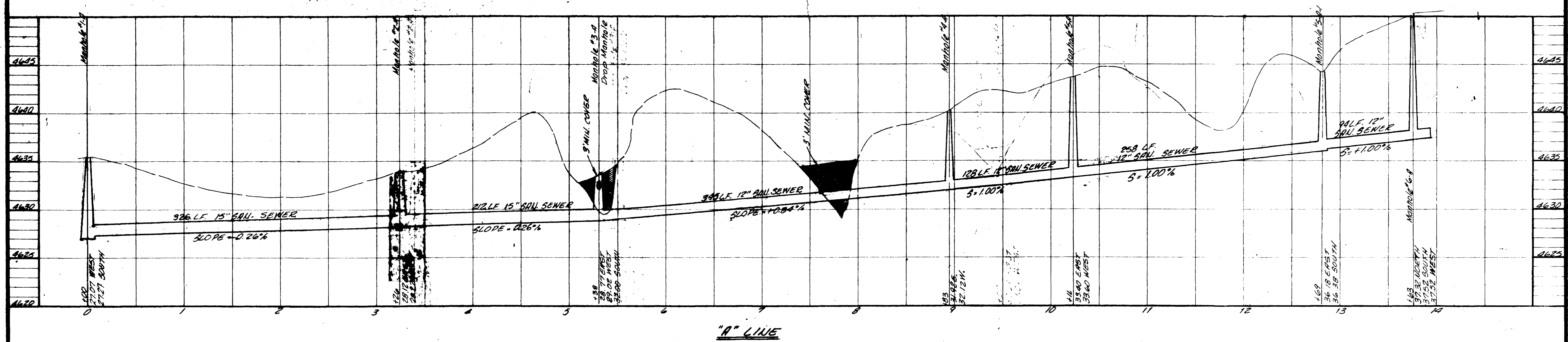
REVISED SEPT 16, 1977

ROBERT P. GERLOIS

DATE: 9/14/77

THE RIDGES, FILING NO ONE





"R" LINE



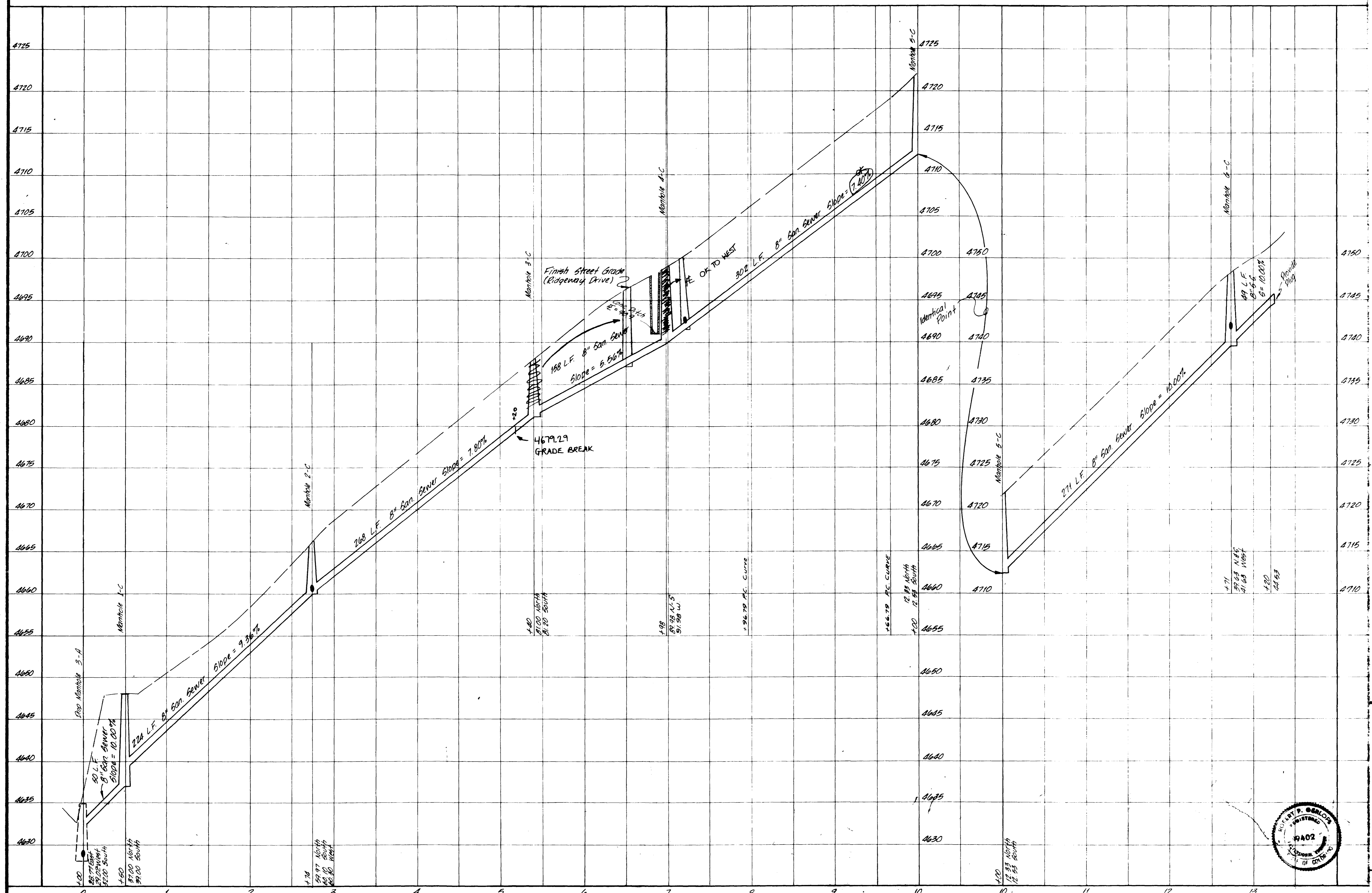
ROBERT P. GERLOFS
 Engineering Consultant
 1515 1/2 ST. 10TH AVENUE
 DENVER, COLORADO 80202

DATE: May, 1977

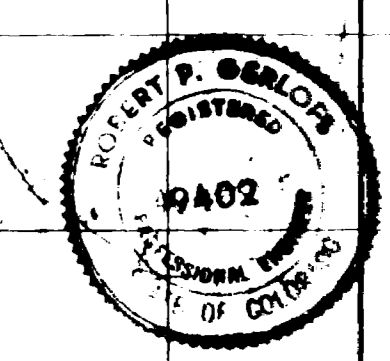
SEWER COLLECTION LINE NO. ONE
 LINES 10 - 14

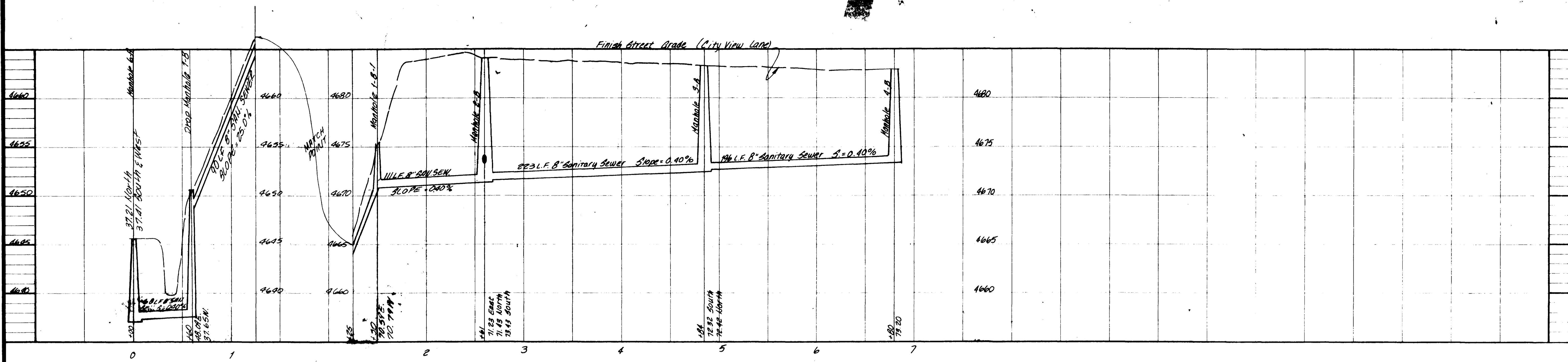
THE RIDGES FILING NO. ONE
 1515 1/2 ST. 10TH AVENUE
 DENVER, COLORADO

REVISED 3/21/16, 1977

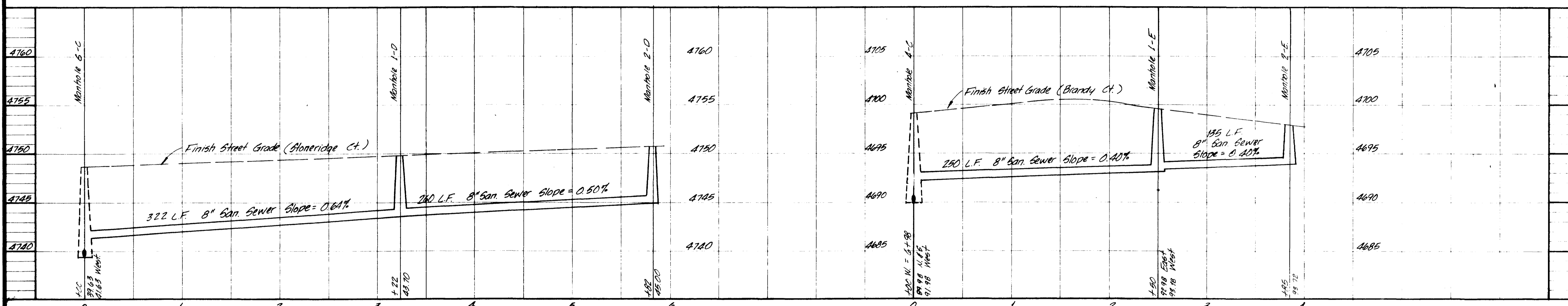


THE RIDGES FILING NO. ONE
 MESA COUNTY, COLORADO
 SANITARY SEWER COLLECTION LINE "C"



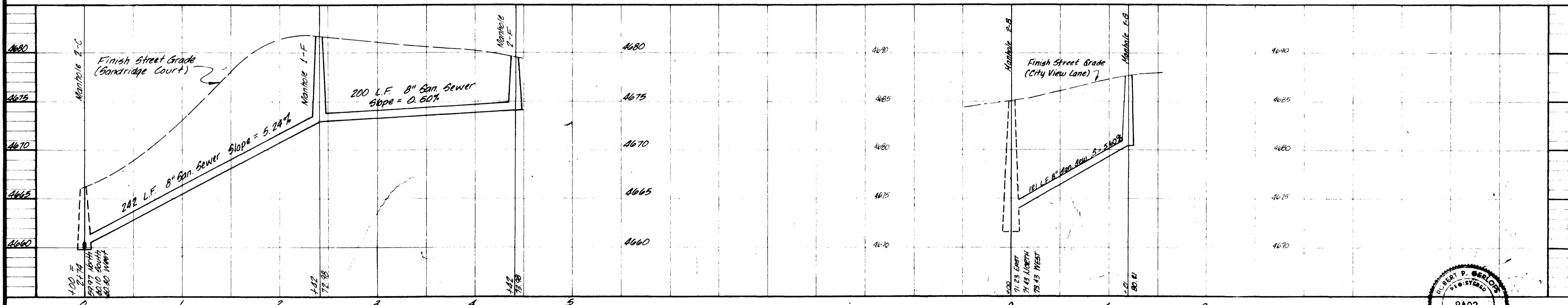


LINE "B"



LINE "D"

LINE "E"



LINE "F"

LINE "G"



ROBERT P. GERLOFS
 ENGINEER
 P.O. BOX 2474 • DENVER, COLORADO 80216

DATE: MAY 1977
 SCALE: 1" = 40' VERT.
 1" = 80' HORZ.

THE RIDGES
 FILING NO. ONE
 DENVER COUNTY, COLORADO

SANITARY SEWER COLLECTION
 LINES "B", "D", "E", "F", "G"