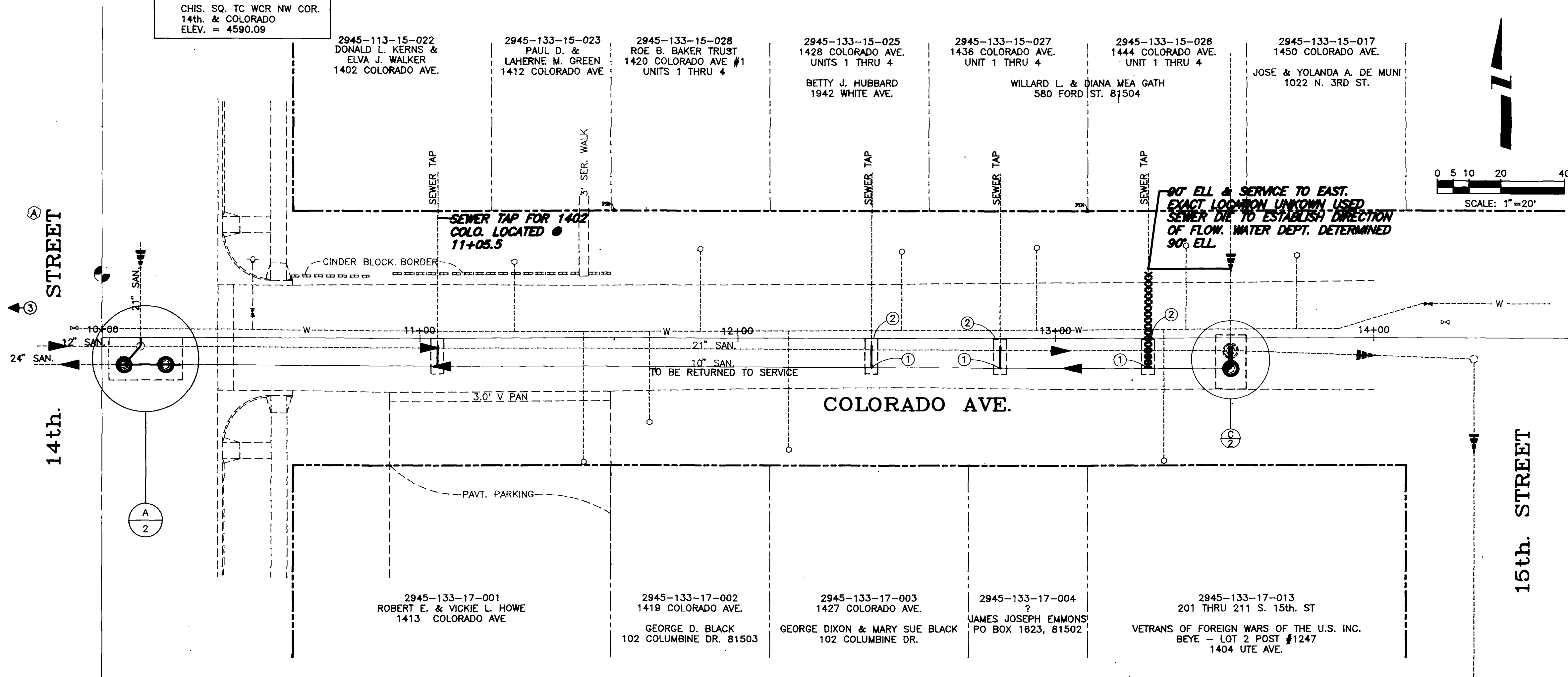


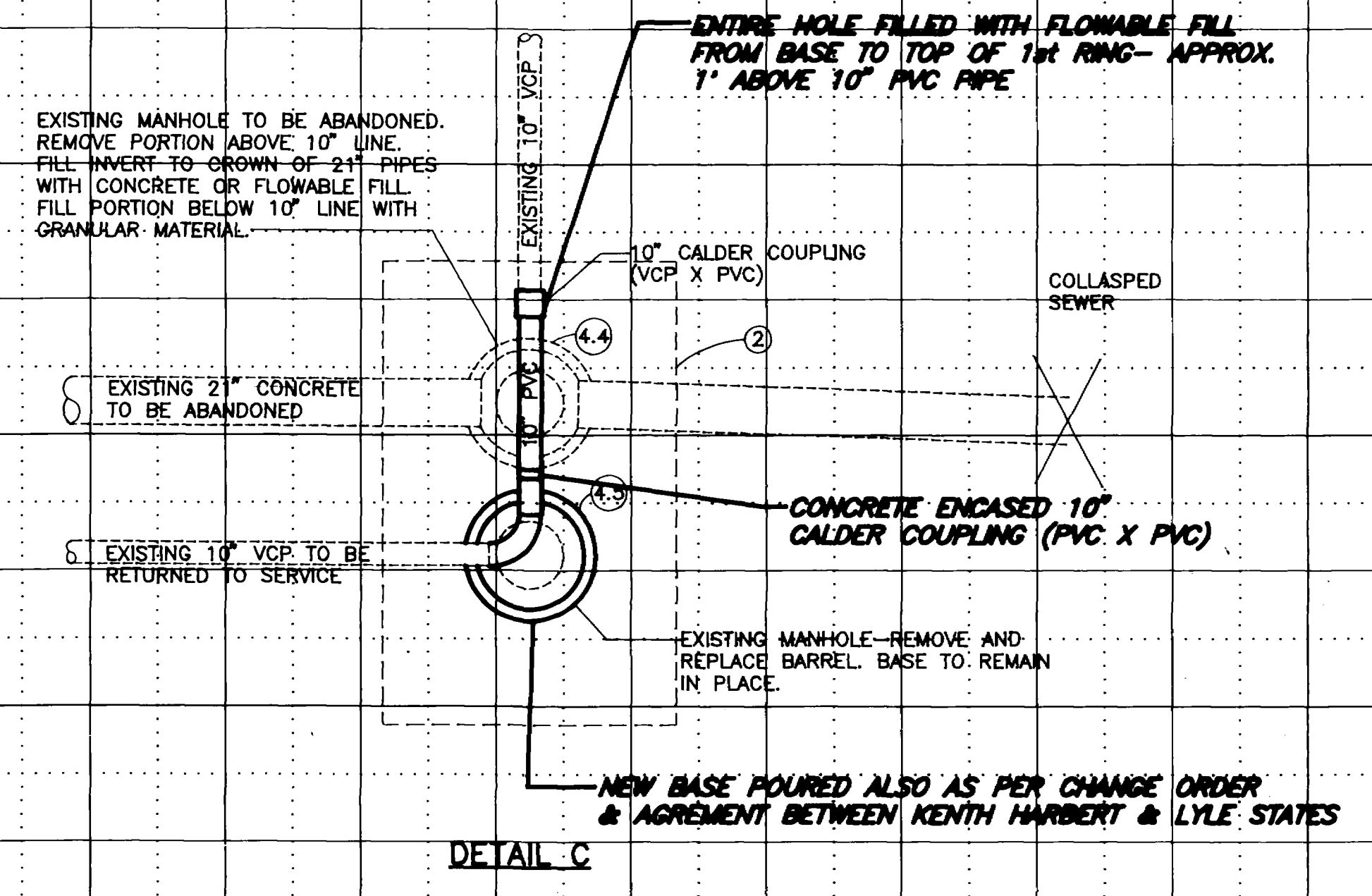
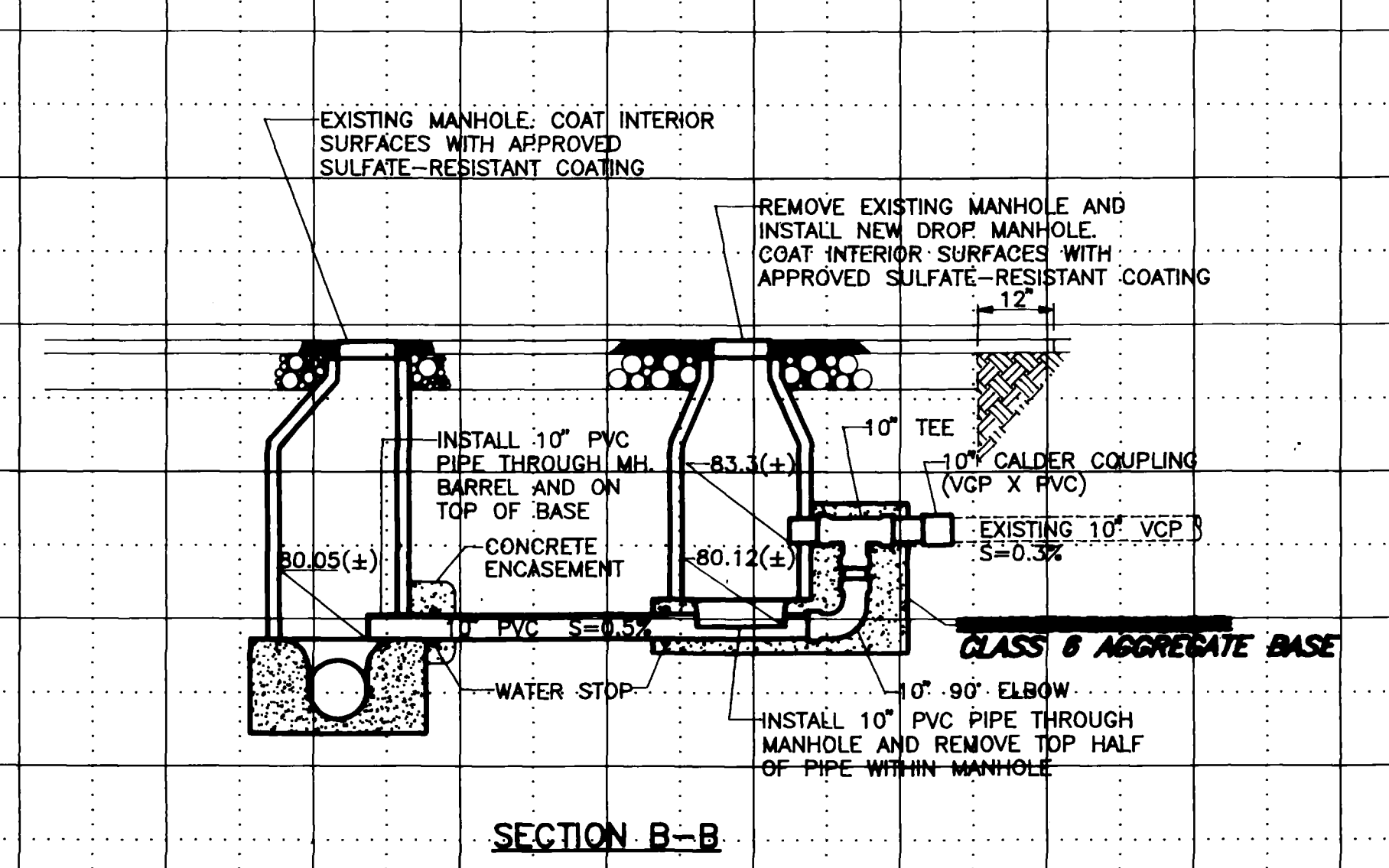
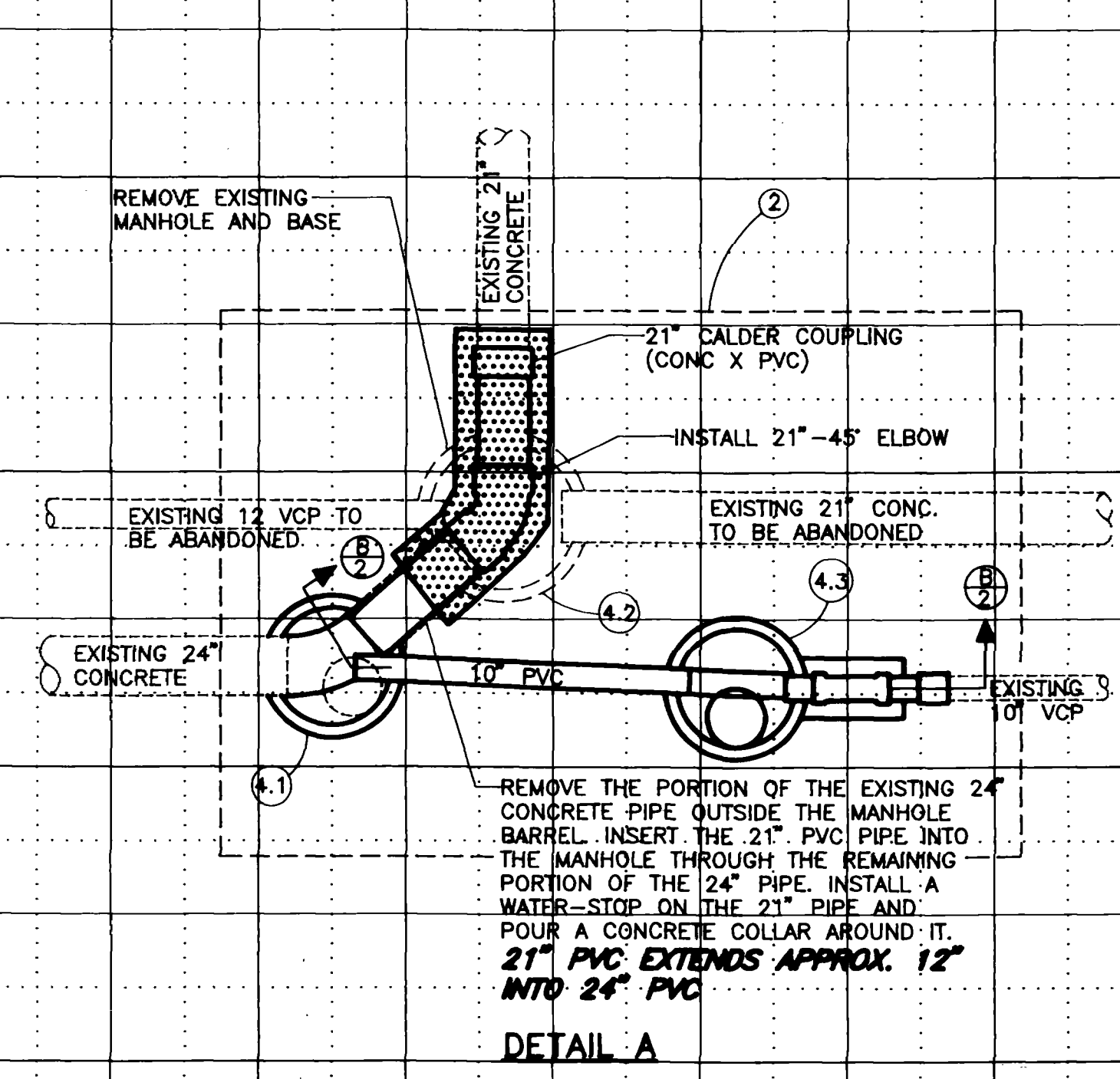
Ⓐ BENCH MARK:
CHIS. SQ. TO WCR NW COR.
14th. & COLORADO
ELEV. = 4590.09



CONSTRUCTION NOTES:

- ① INSTALL 4" SERVICE SADDLE ON 10" VCP LINE. CONNECT EXISTING SEWER SERVICE TO NEW SERVICE SADDLE WITH 4" PVC LINE. INTERCEPT EXISTING SERVICE LINE AS NEEDED TO OBTAIN 1/4" PER FOOT OR STEEPER SLOPE.
- ② ASPHALT PATCH ONE FOOT BEYOND THE EDGE OF THE TRENCH ON ALL SIDES. EXTEND EDGES TO MAKE A RECTANGULAR PATCH. THICKNESS:
6" - CLASS 6 AGGRGATE BASE COURSE
3" - GRADE C HOT BITUMINOUS PAVEMENT
- ③ RECONNECT SEWER SERVICES AT 1350 AND 1358 COLORADO AVENUE FROM THE 12" SEWER LINE TO THE 24" SEWER LINE, INCLUDING SIMILAR PROVISIONS TO THOSE IN NOTES ① AND ②.
- ④ EXISTING MANHOLES

MH. NO.	STA.	OFFSET	RIM	INV. OUT	INV. IN	INV. IN	INV. IN
4.1	10+07	8.5 RT.	90.16	77.3 W	77.2 N		
4.2	10+12	2.7 RT.	90.28	78.1 S	78.2 N	78.2 E	78.6 W
4.3	10+20	8.5 RT.	90.21	PLUGGED	83.3 E		
4.4	13+55	4.0 RT.	91.93	77.8 E	77.8 W	84.3 N	84.3 S
4.5	13+55	9.6 RT.	91.74	84.2 W	84.2 N		



AS CONSTRUCTED

REVISION	DESCRIPTION	DATE	DRAWN BY	DATE	CHECKED BY	DATE	APPROVED BY	DATE	FIELD BOOK NO.	PAGE
REVISION										
REVISION										
REVISION										
REVISION										

SCALE	
PLAN	PROFILE
HORIZ. 1"=20'	HORIZ. 1"=20'
	VERT. 1"=5'

DEPARTMENT OF PUBLIC WORKS AND UTILITIES
ENGINEERING DIVISION
CITY OF GRAND JUNCTION, COLORADO

COLORADO AVENUE SEWER LINE
REPLACEMENT 14TH TO 15TH 1993
Plan & Details

SHEET NO.	2
OF	3
FILE NO.	SL93COLO.DWG