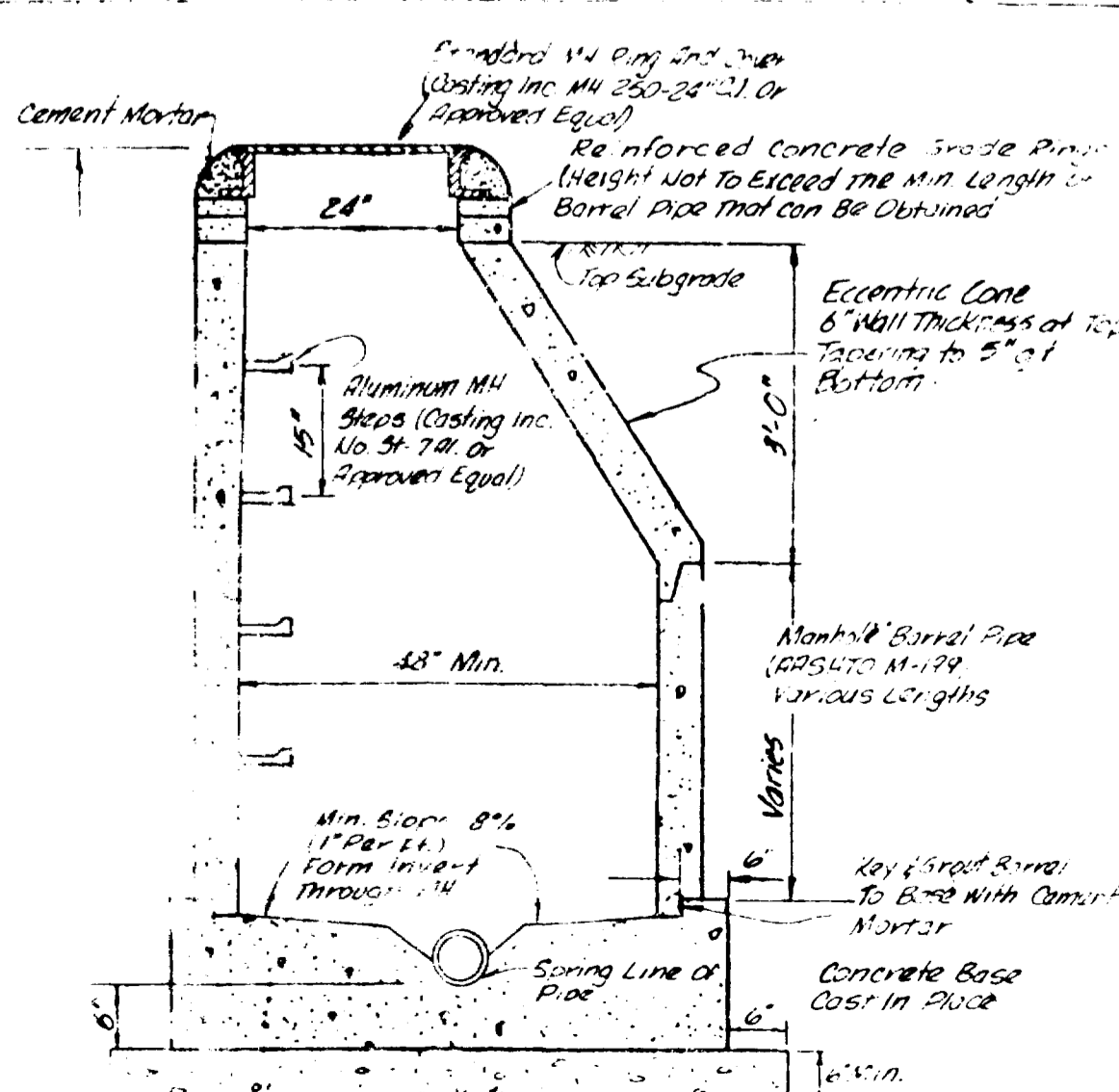
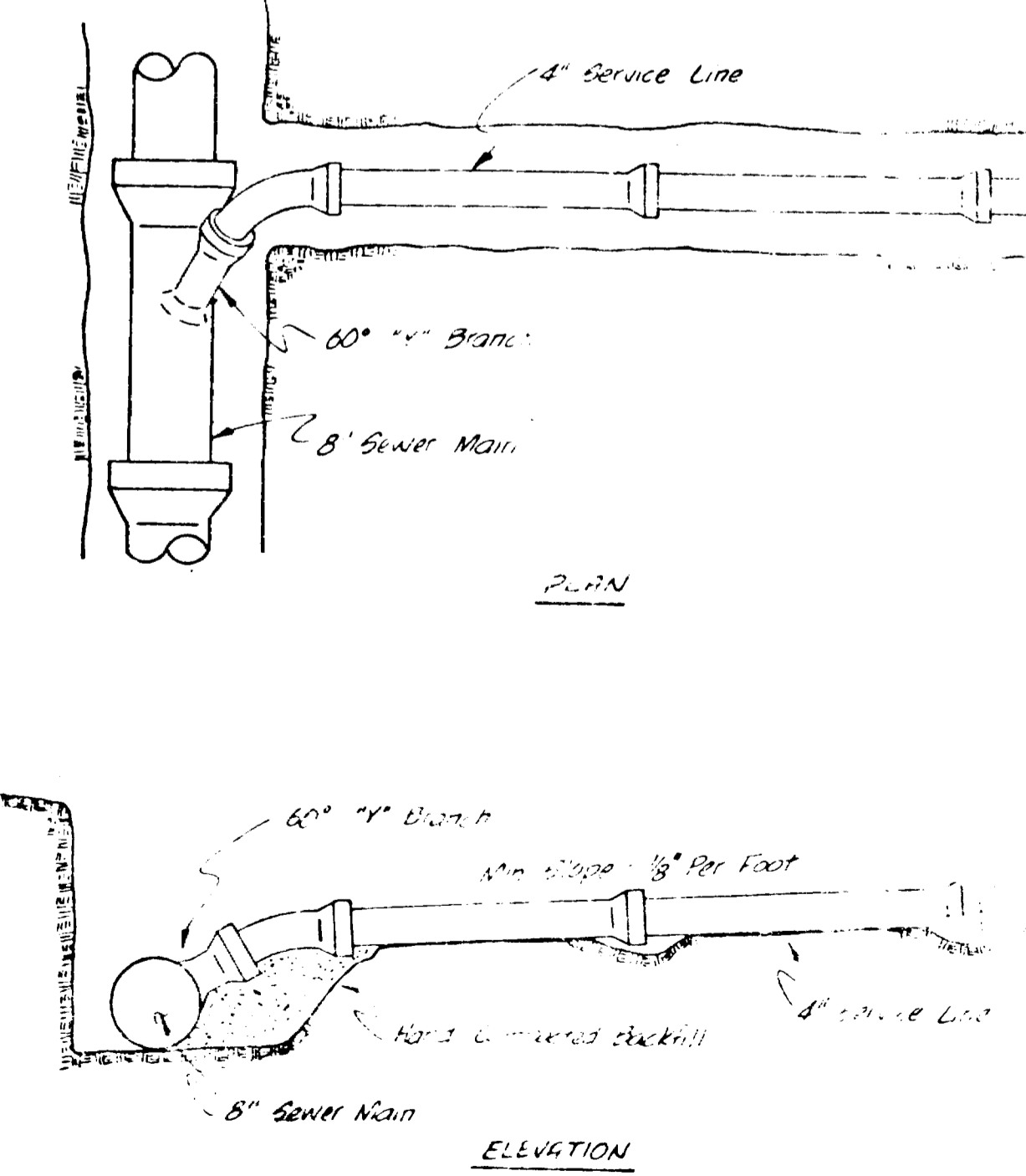


INSTALL AT END OF EXIST. 16" AC IRRIGATION LINES 4" APCC 149-C COMBINATION AIR/VACUUM VALVE IN STANDARD SEWER MANHOLE. (SEE DOMESTIC WATER AIR/VAC DETAIL ON SHEET 6 OF 7)

MANHOLE BASE AND THRUST BLOCKS FOR IRR. LINES TO BE POURED MONOLITHICALLY AND TIED TOGETHER WITH REBAR.

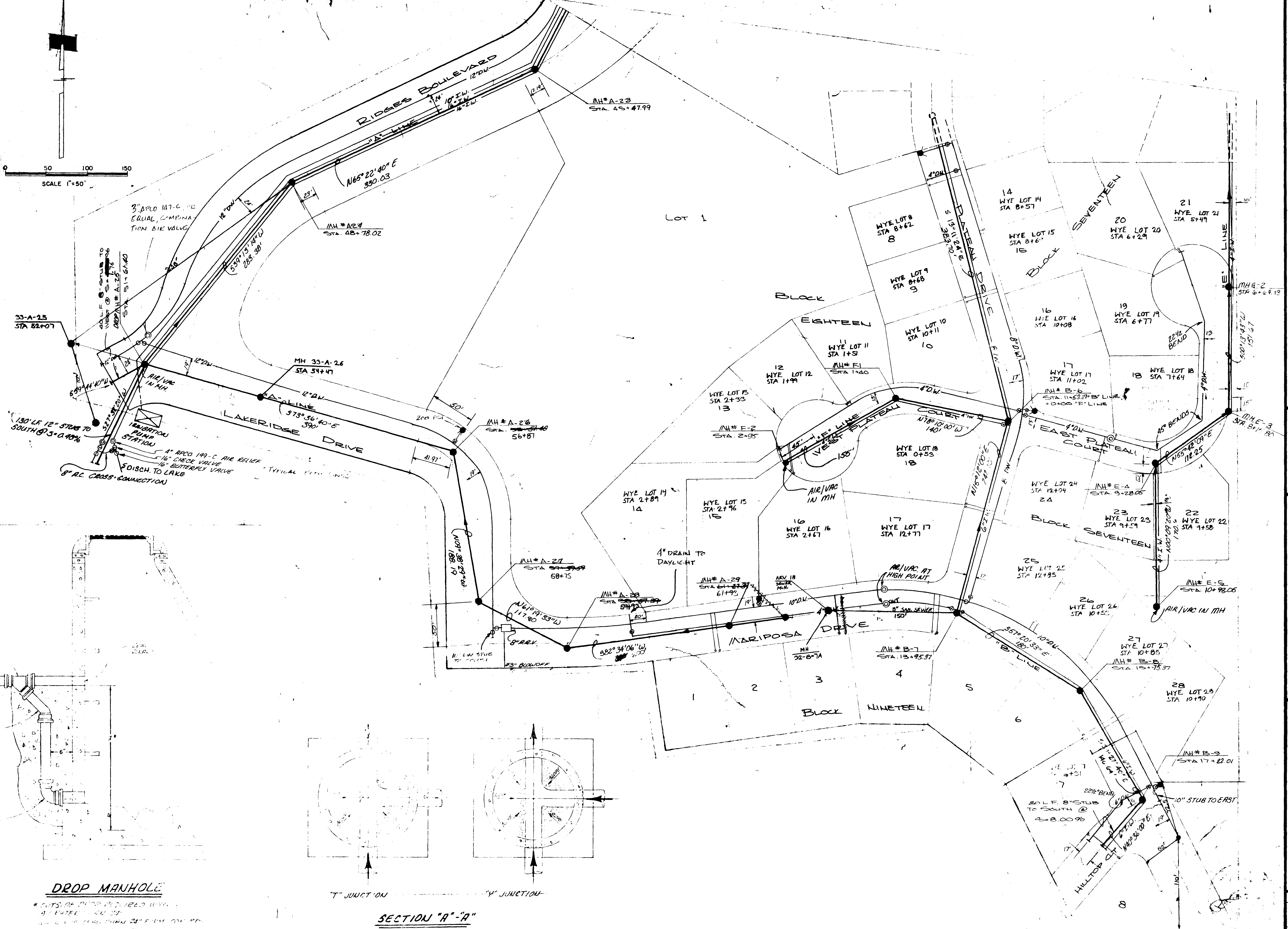
LOCATE WATER LINE @ TOE OF CUT SLOPE BETWEEN THIS A-15 & A-23. IN NO CASE SHALL WATER LINE BE LESS THAN 10 FEET FROM SEWER LINE.



- NOTES:
- SERVICE LINE LOCATION FOR SANITARY SEWER AND IRRIGATION WATER WILL BE FIELD LOCATED BY OWNER.
  - ALL IRRIGATION LINES & SERVICES SHALL BE LAID IN COMMON TRENCH WITH SANITARY SEWER UNLESS OTHERWISE SHOWN OR DIRECTED.
  - ALL IRRIGATION PIPE IS CLASS 160 PVC UNLESS OTHERWISE SPECIFIED.
  - TOP OF ECCENTRIC CONE TO BE SET @ TOP OF SUBGRADE ± 3" TACHES STREET CONTRACTOR TO SET RINGS TO FINISH STREET GRADE.
  - ROADWAY SUBGRADE IS ONE FOOT BELOW FINISH GRADE.
  - ALL SEWER STUB-OUTS AND SERVICE LINES SHALL HAVE A WATER TIGHT (GLUED) PVC OR CONCRETE CAP.
  - INSTALL 2 RED x 10 GA., 8 WHITE x 10 GA., AND 2 BLACK x 10 GA. WIRES IN TRENCH WITH 10" IW FROM MH A-21 TO PROPOSED PUMP STATION AT LAKE C NEAR MH A-25.
  - INSTALL 10 GA. WIRE AND CONTROL CABLE IN TRENCH WITH SANITARY SEWER FROM MH A-15 TO END OF 12" STUB (NEAR MH A-25).

APRIL 2018  
 SCALE 1" = 50'  
 SANITARY SEWER PLANS & DETAILS  
 PROOF ENGINEERING, INC.  
 Engineering Consultants  
 P.O. BOX 2872 GRAND JUNCTION, COLORADO 81501 PHONE 253-8966

SCALE 1"=50'



**DROP MANHOLE**

\* CUTS OF DROP MANHOLE WITH  
 1" DIA. STUB TO SOUTH @  
 2" DIA. STUB TO EAST @

**T" JUNCTION**

**Y" JUNCTION**

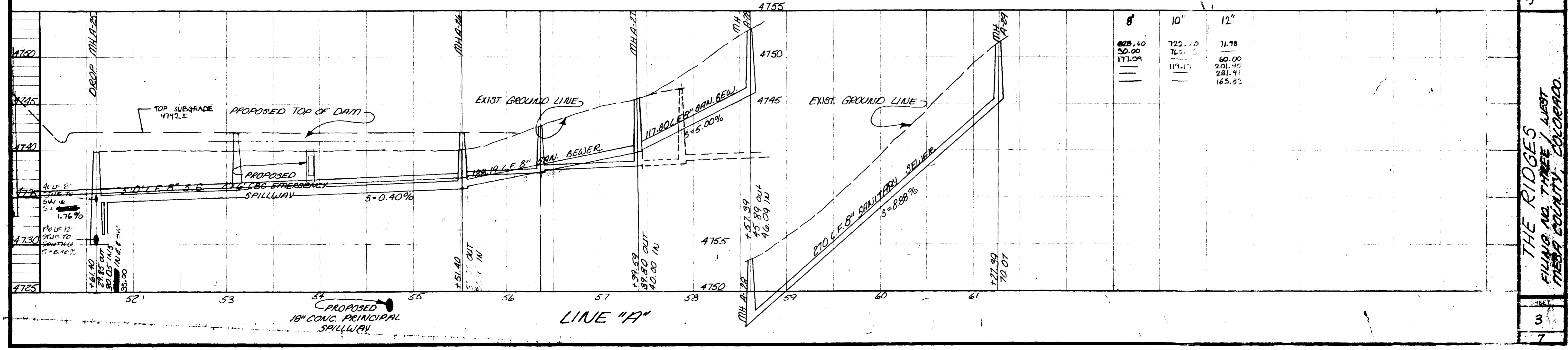
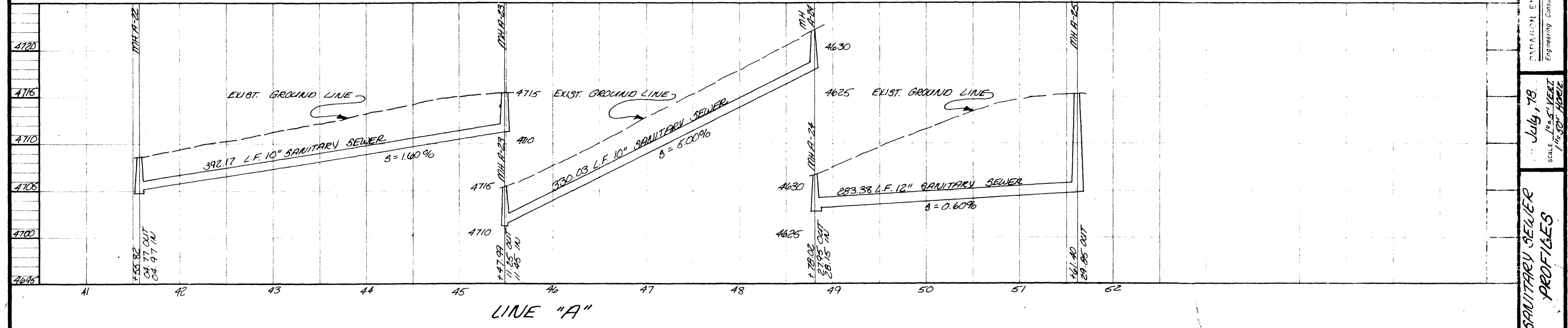
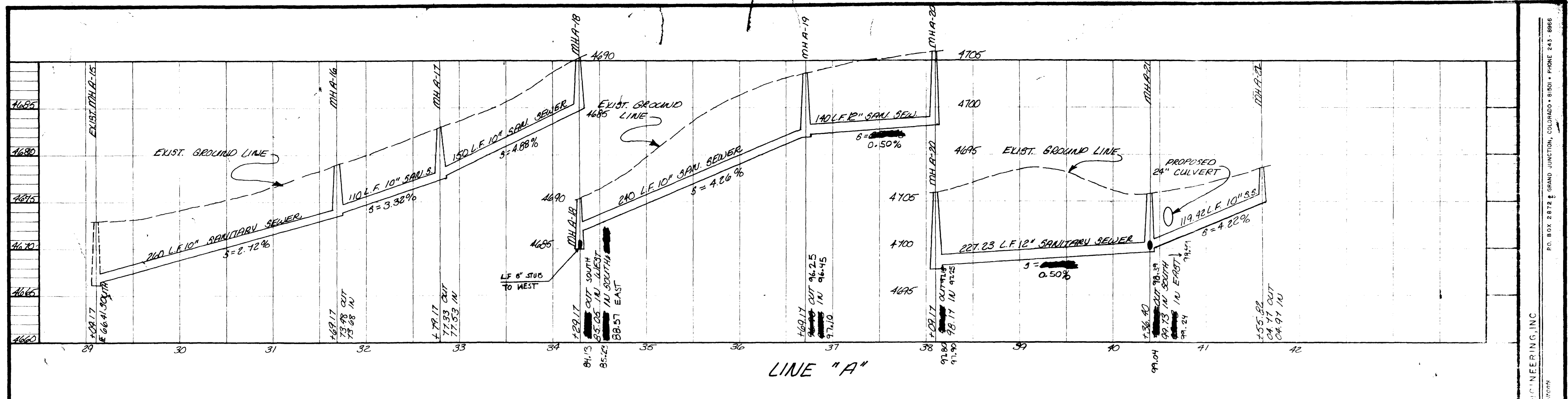
**SECTION "A"-A"**

PARAGON ENGINEERING, INC.  
 Engineering Consultants

DATE: APRIL 1978  
 SCALE: AS SHOWN

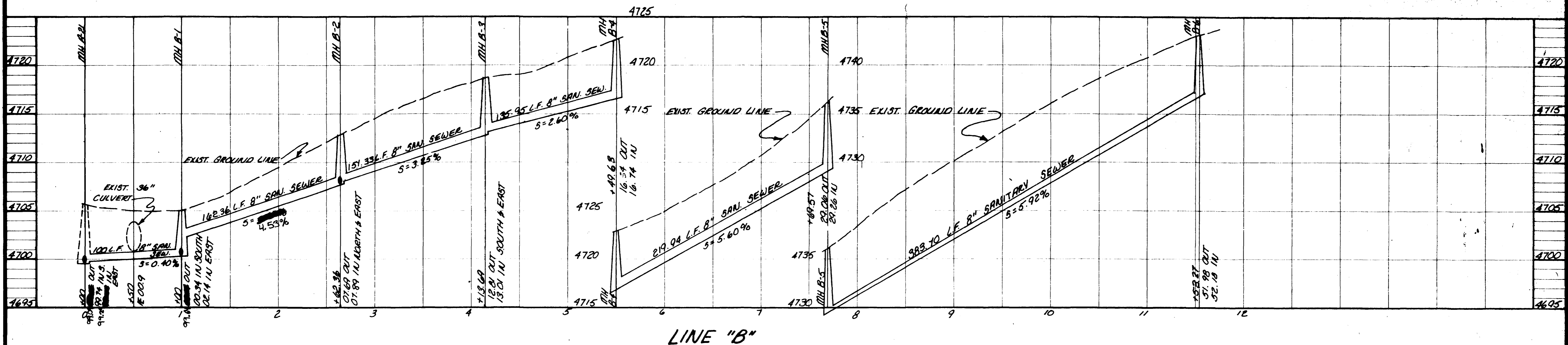
THE RIDGES, FILING NO. 75  
 WEST  
 NEVA COUNTY, COLORADO

SHEET  
 OF 7

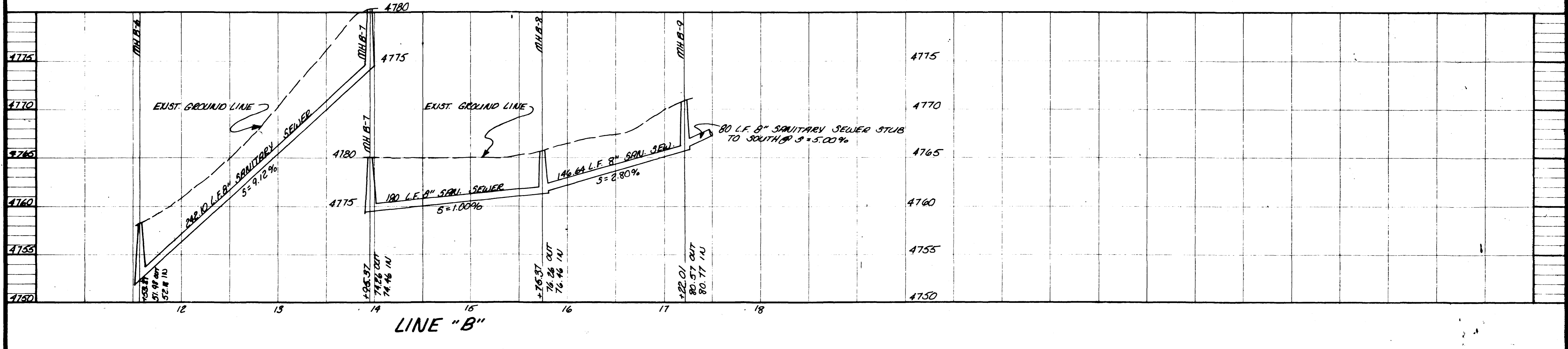


	8"	10"	12"
768.0	722.70	71.78	
768.0	768.00	60.00	
768.0	113.17	201.40	
768.0		281.41	
768.0		165.82	

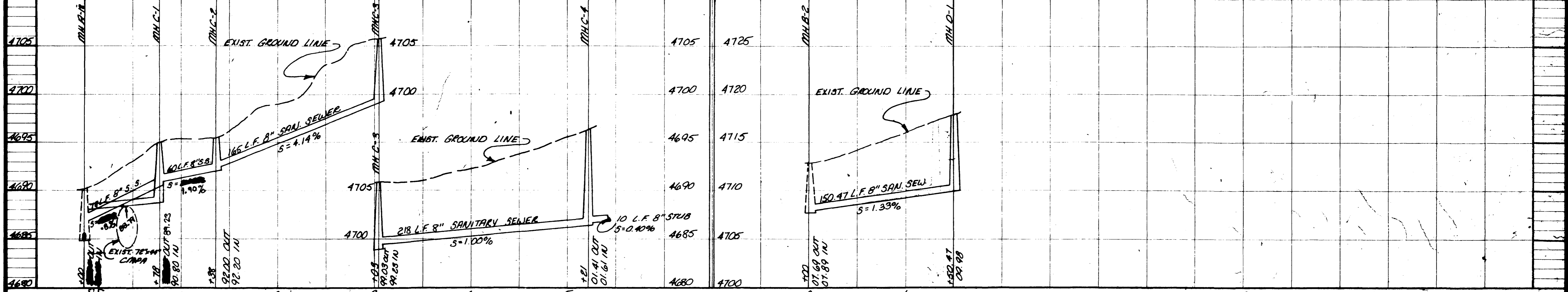
PAPAION ENGINEERING, INC.  
 Engineering Consultants  
 P.O. BOX 2872 • GRAND JUNCTION, COLORADO • 81501 • PHONE 243-8866  
 July, 78  
 SCALE: 1/4" = 1'-0" VERT  
 1 1/2" = 30' HORIZ  
 SANITARY SEWER PROFILES  
 THE RIDGES  
 FILING NO. THREE / WEST  
 MESA COUNTY, COLORADO.  
 SHEET 3  
 7



LINE "B"



LINE "B"



LINE "C"

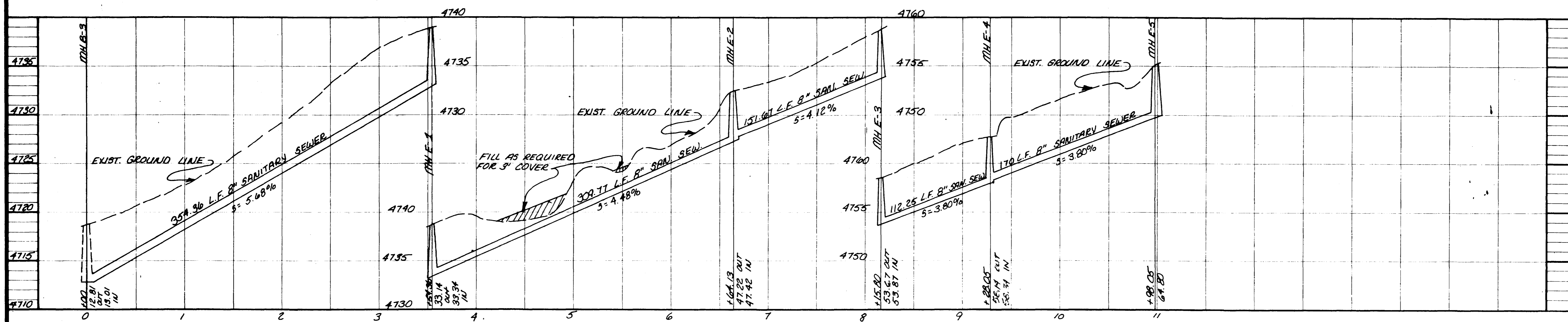
LINE "D"

PARAGON ENGINEERING, INC.

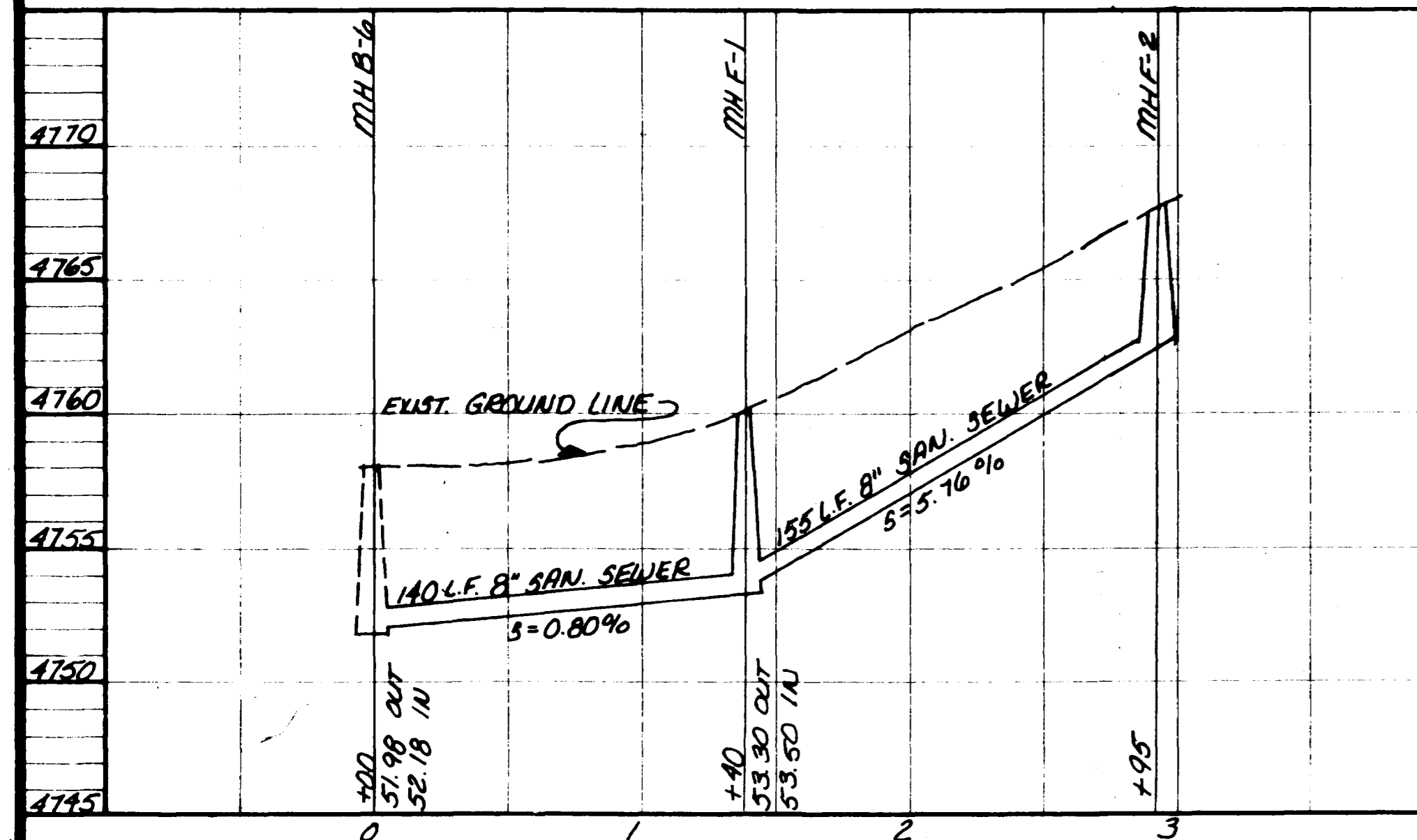
DATE: July, 2001

SANITARY SEWER PROFILES

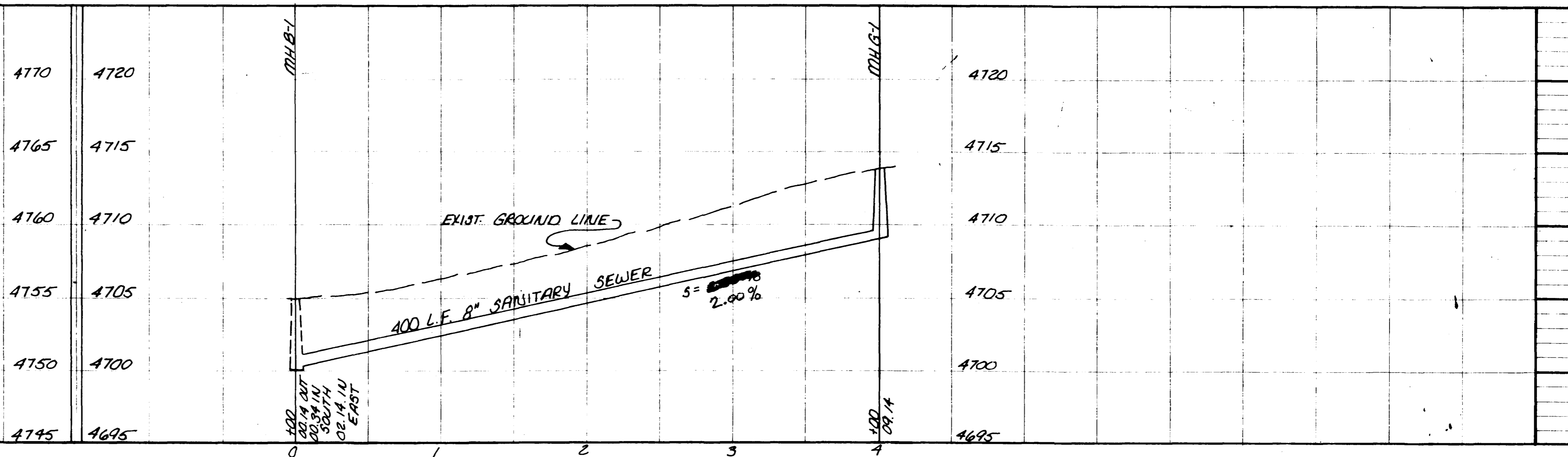
THE RIDGES



LINE "E"



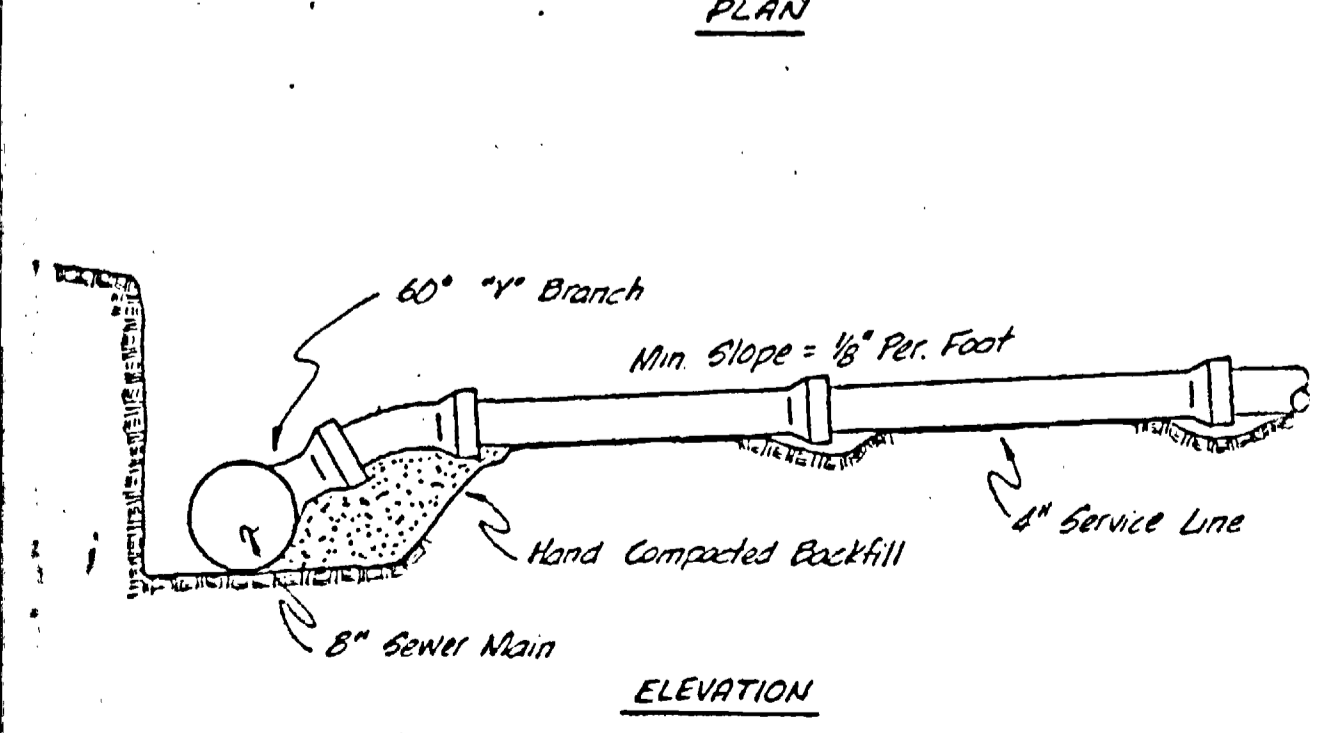
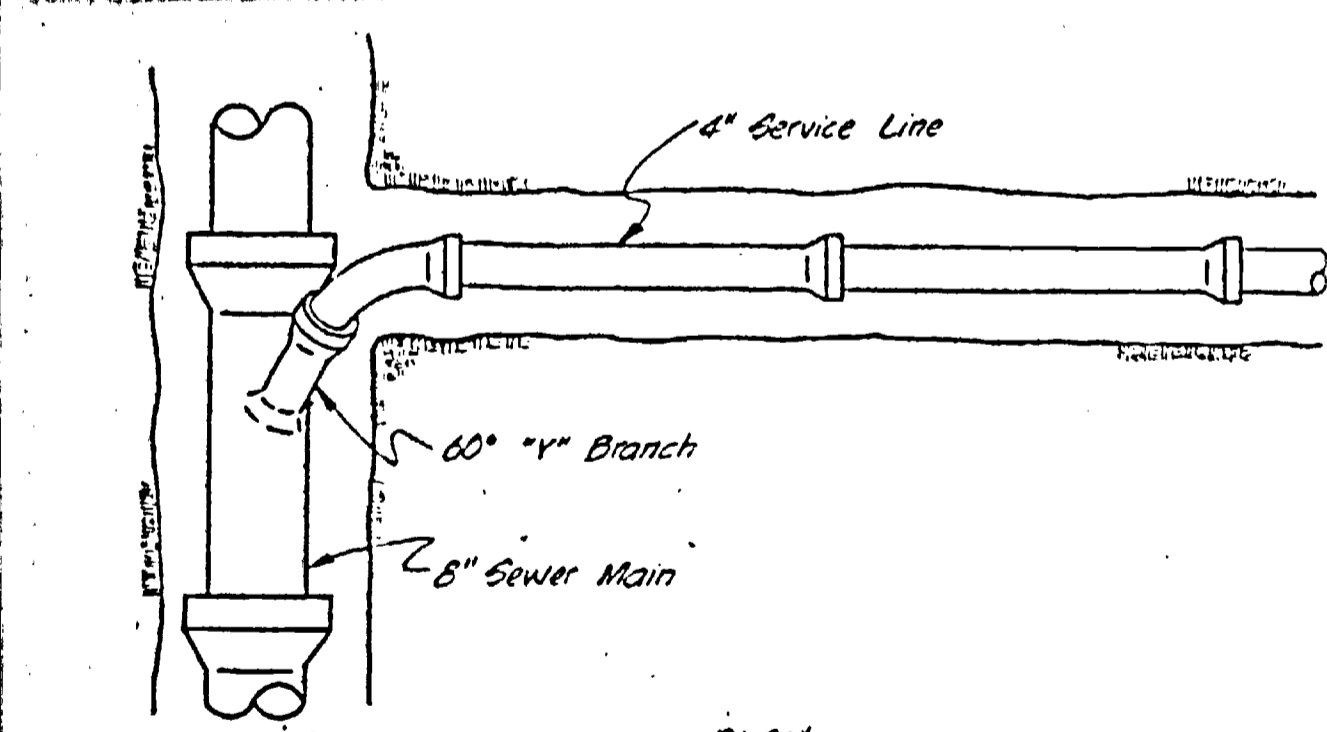
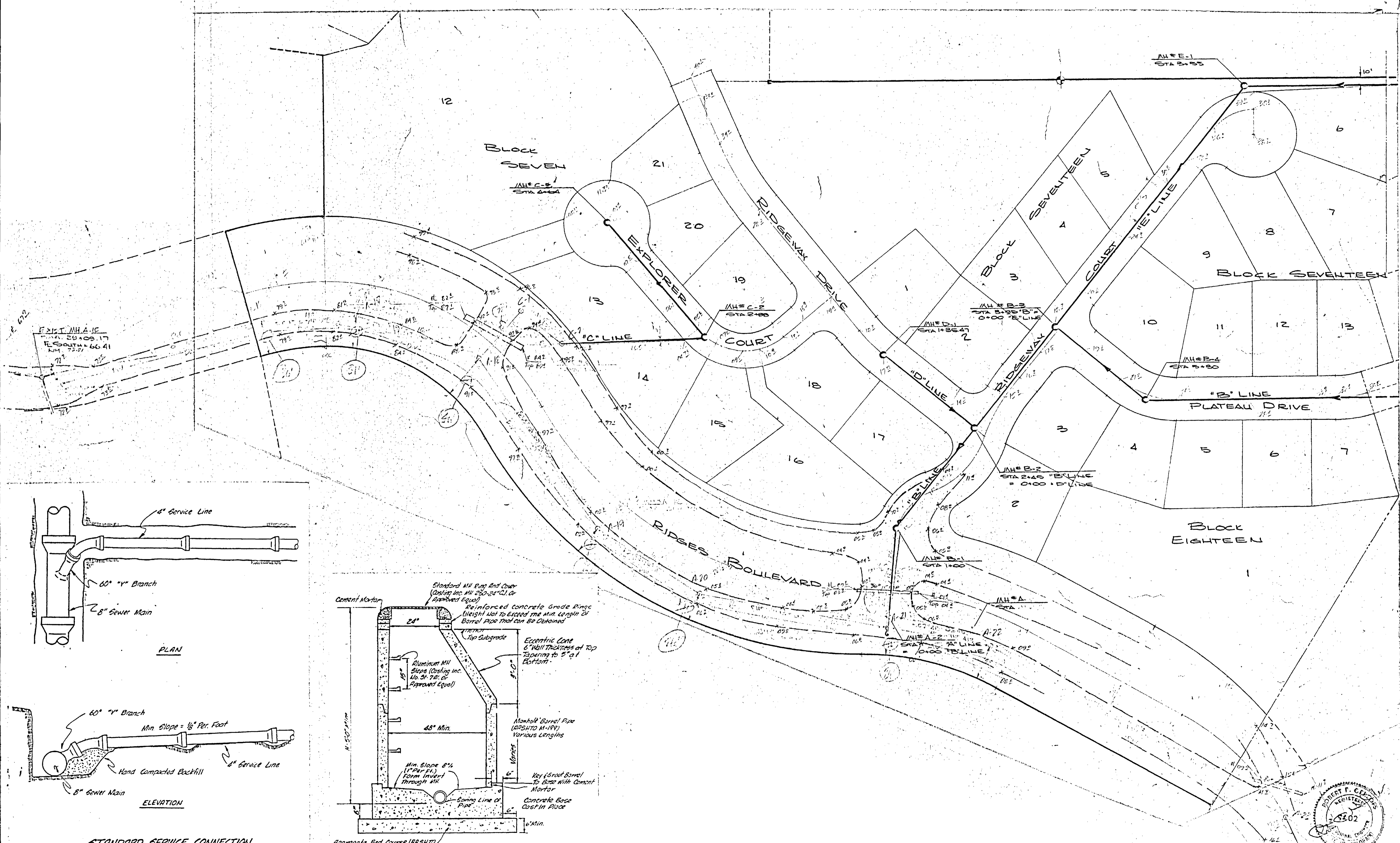
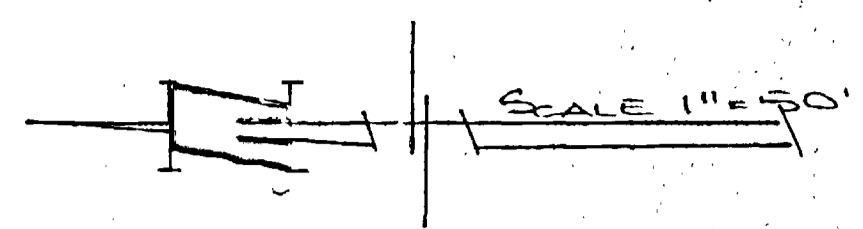
LINE "F"



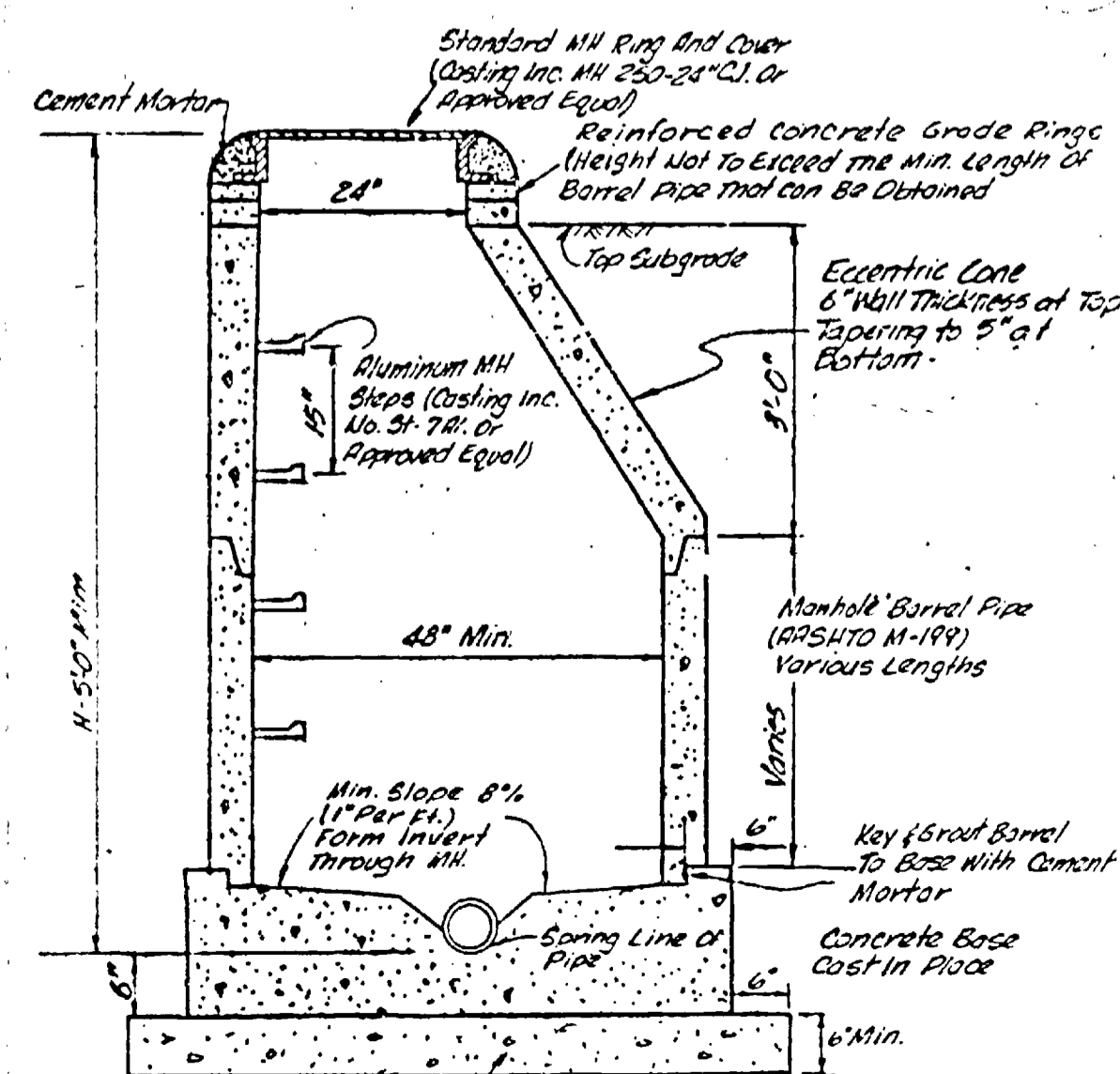
LINE "G"

8"  
 0-6 1595.05  
 6-8 200  
 1795.05

SUMMARY						
	PHASE 2			PHASE 3		
	0-6	6-8	8-10	0-6	6-8	8-10
8" SHEET 3	30	—	—	828.60	177.59	—
8" SHEET 4	173.74	688.74	81	—	—	—
8" SHEET 5	1515.05	200	—	—	—	—
	3346.79	888.74	81	—	—	—
10" SHEET 3	760.25	119.7	—	722.20	—	—
10" SHEET 4	—	—	—	—	—	—
10" SHEET 5	—	—	—	—	—	—
12" SHEET 3	—	201.40	125.85	71.78	60	281.40
12" SHEET 4	—	—	—	—	—	—
12" SHEET 5	—	—	—	—	—	—
	4097.04	1209.2	246.85	1622.78	257.59	281.40
				1294.75		



**STANDARD SERVICE CONNECTION**  
No Scale



**STANDARD MANHOLE**