



LEGEND

- S — SEWER LINE
- - - I - - - IRRIGATION LINE
- - - W - - - DOMESTIC WATER LINE
- SEWER MANHOLE
- GATE VALVE
- BUTTERFLY VALVE
- AIR & VACUUM RELIEF VALVE
- FIRE HYDRANT
- WATER METER

M.H. 5-F-12
STA. 1142
M.D. (EAST) 9' 5"
M.D. (WEST) 9' 5"
RIM 4812 31
FE 02 08
FE W 02 78

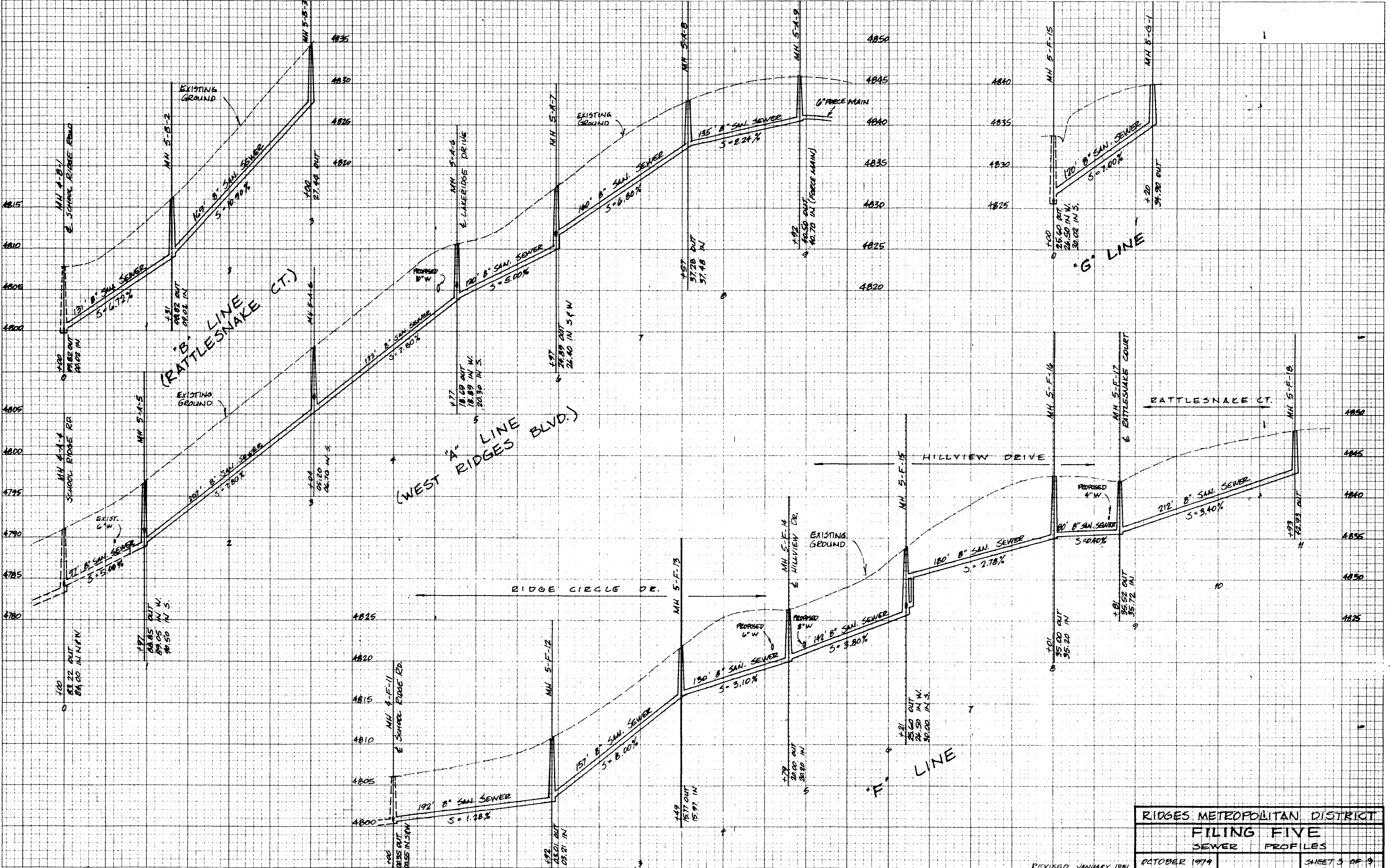
RIM 4822 32
FE 15 32
FE W 15 33

RIM 4827 33
FE 19 36
FE W 19 36

RIM 4840 34
FE 34 55

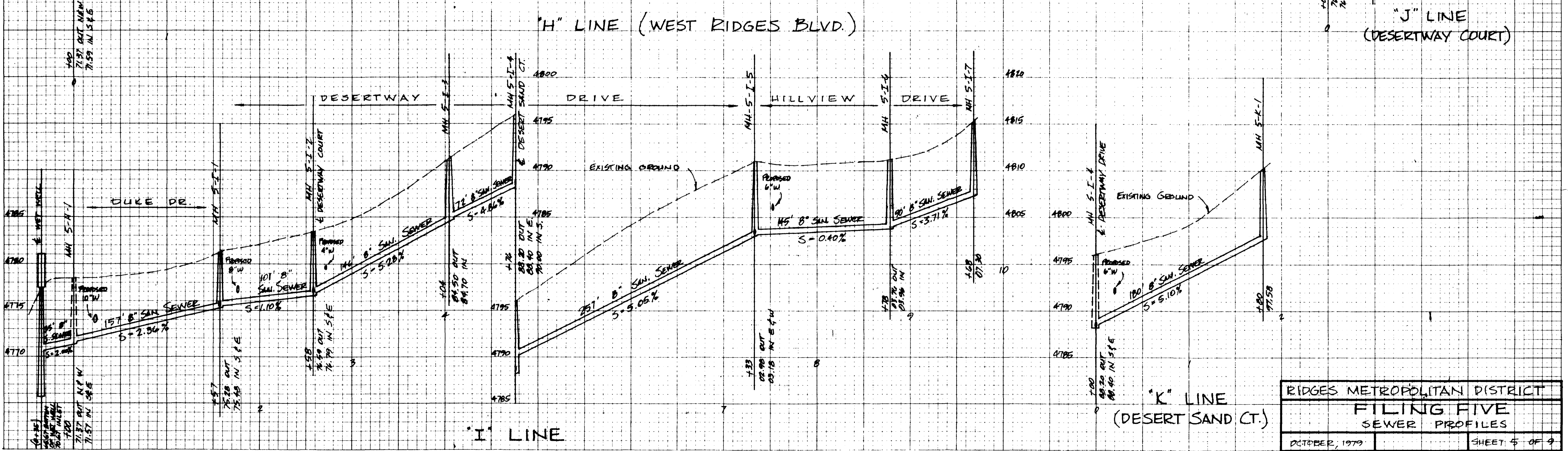
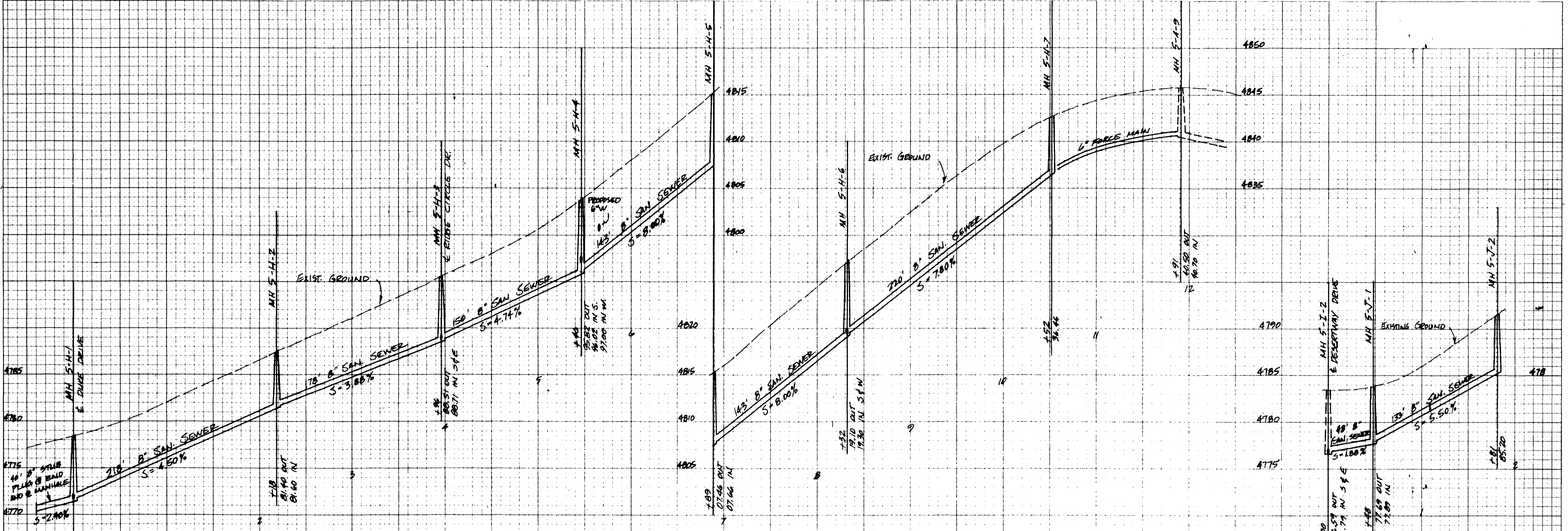
RIM 4849 35
FE 42 43

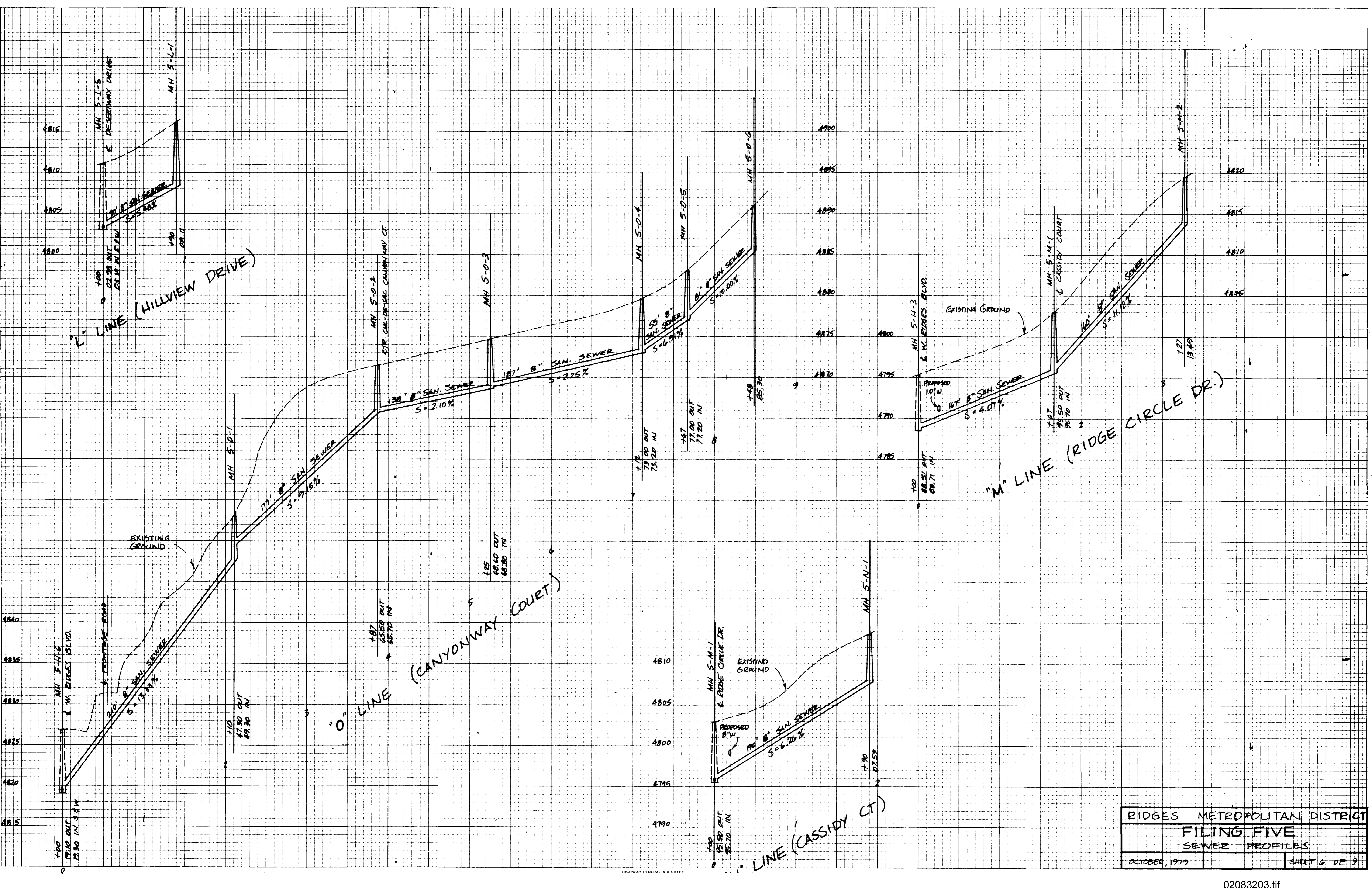
RIM 4842 37
FE N 35 36
FE W 35 41



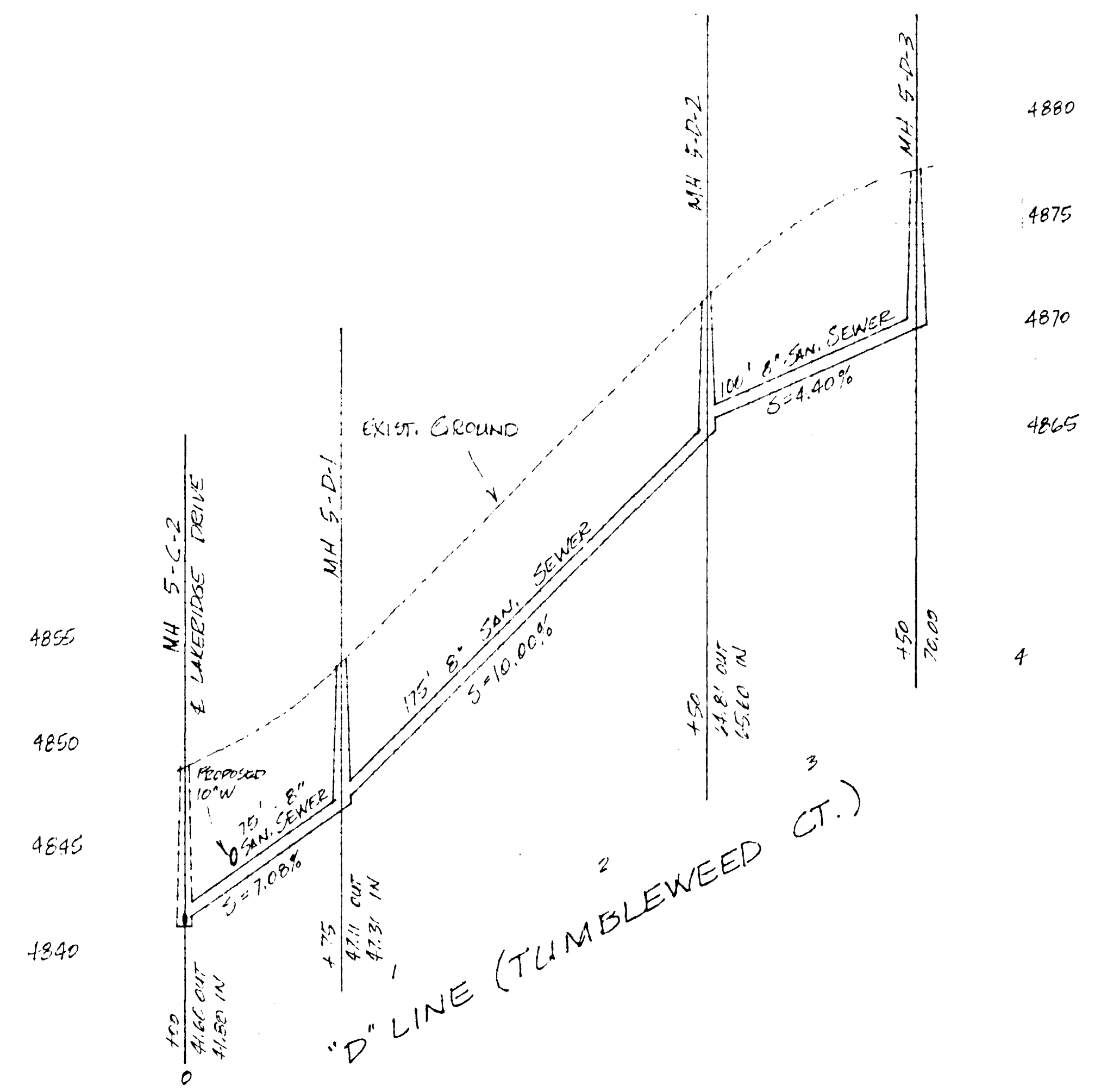
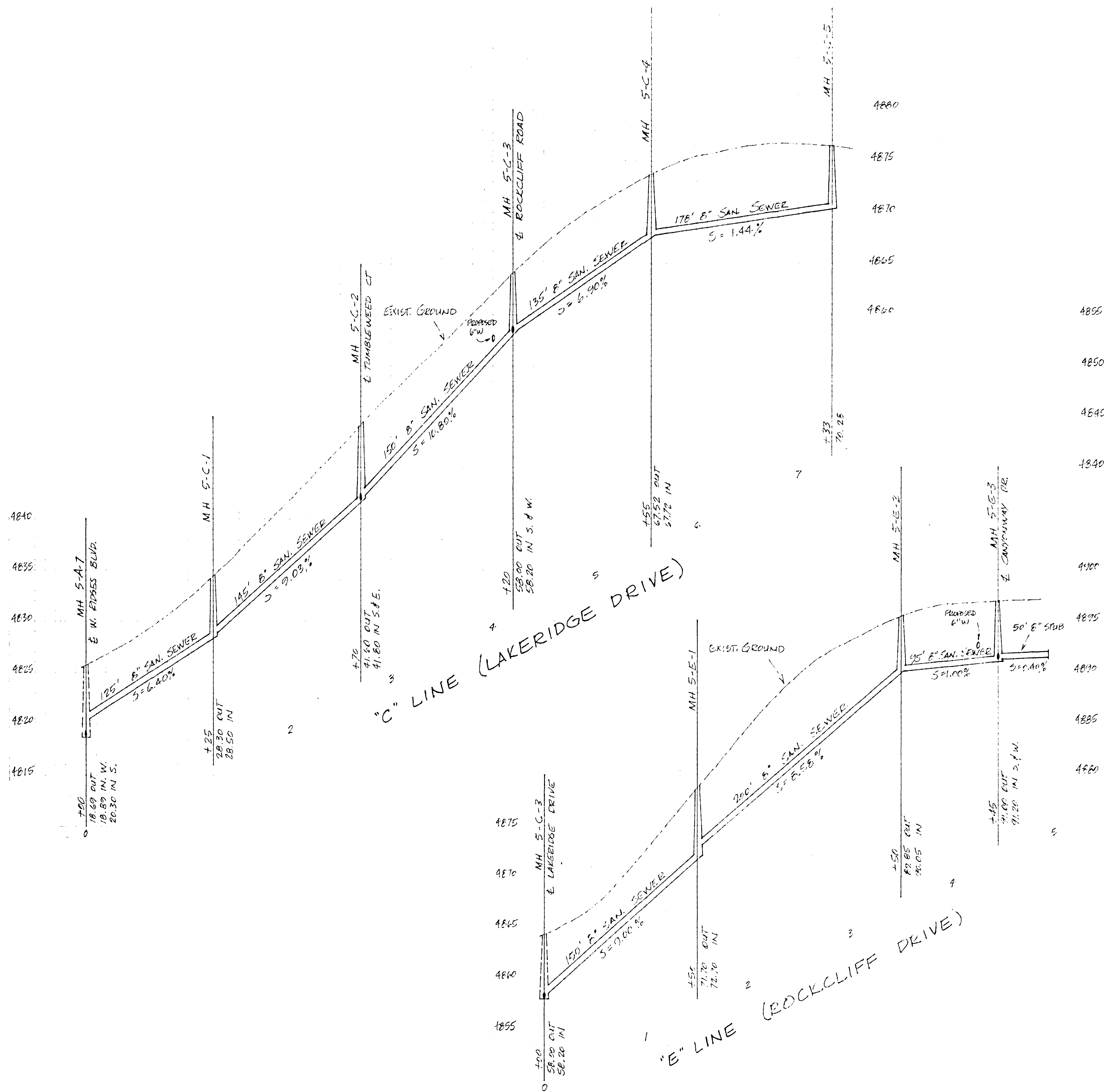
RIDGES METROPOLITAN DISTRICT	
FILING FIVE	
SEWER PROFILES	
OCTOBER 1979	SHEET 3 OF 9

REVISED JANUARY 1981

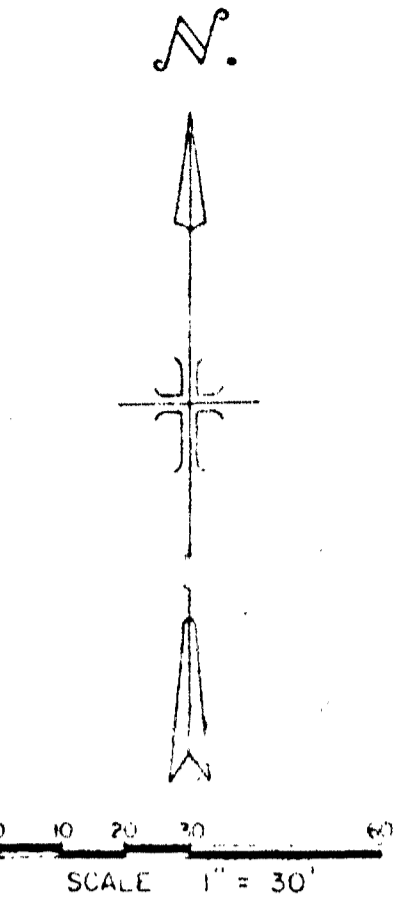
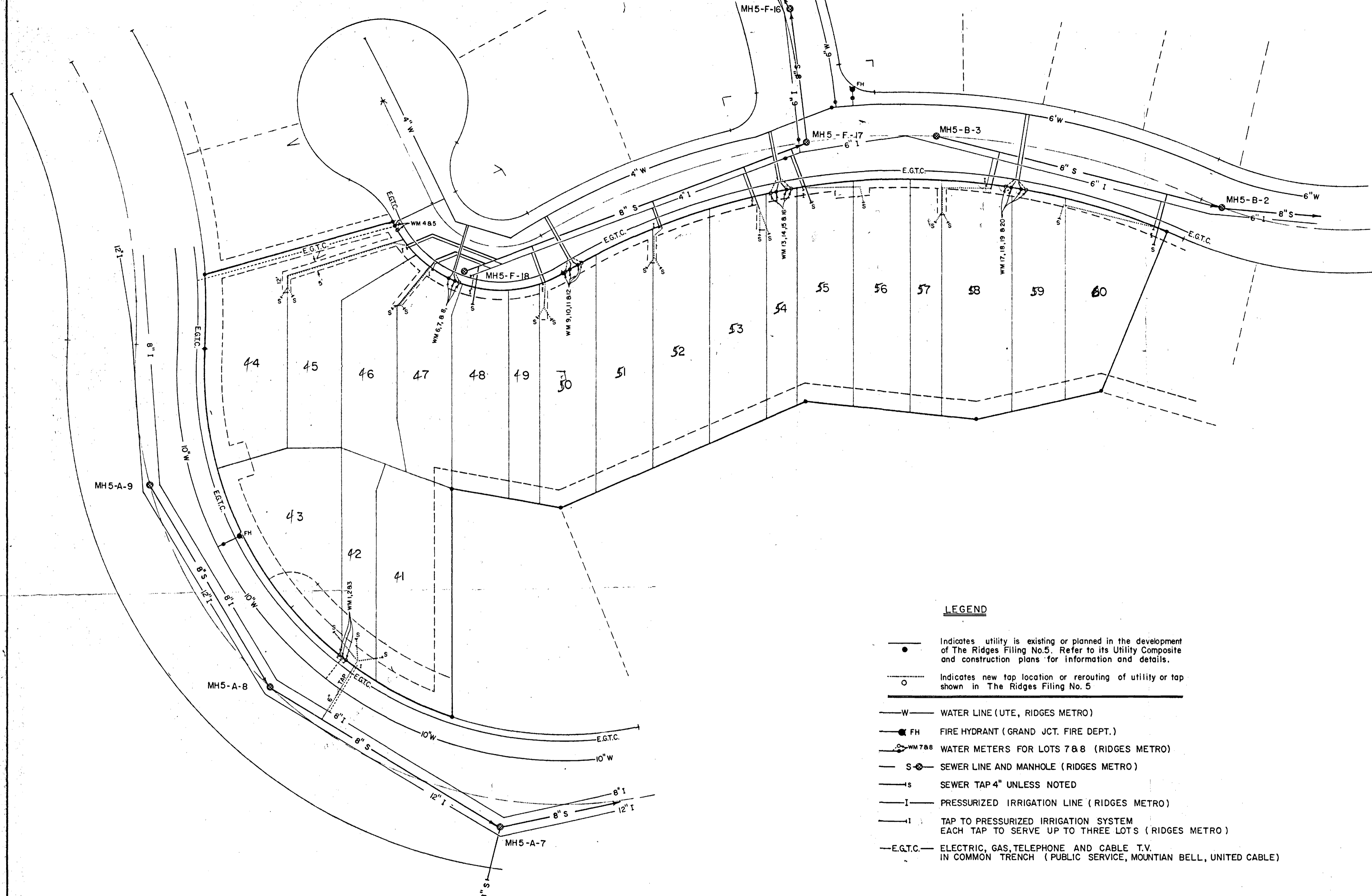




RIDGES METROPOLITAN DISTRICT
 FILING FIVE
 SEWER PROFILES
 OCTOBER, 1979
 SHEET 6 OF 9

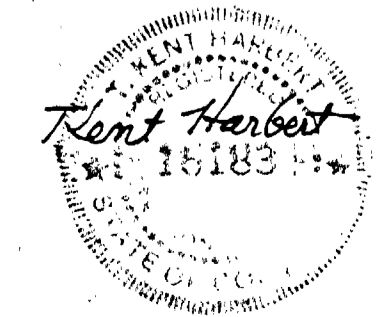


RIDGES METROPOLITAN DISTRICT		
FILING FIVE		
SEWER PROFILES		
DATE: 1972		SHEET 4 OF 9

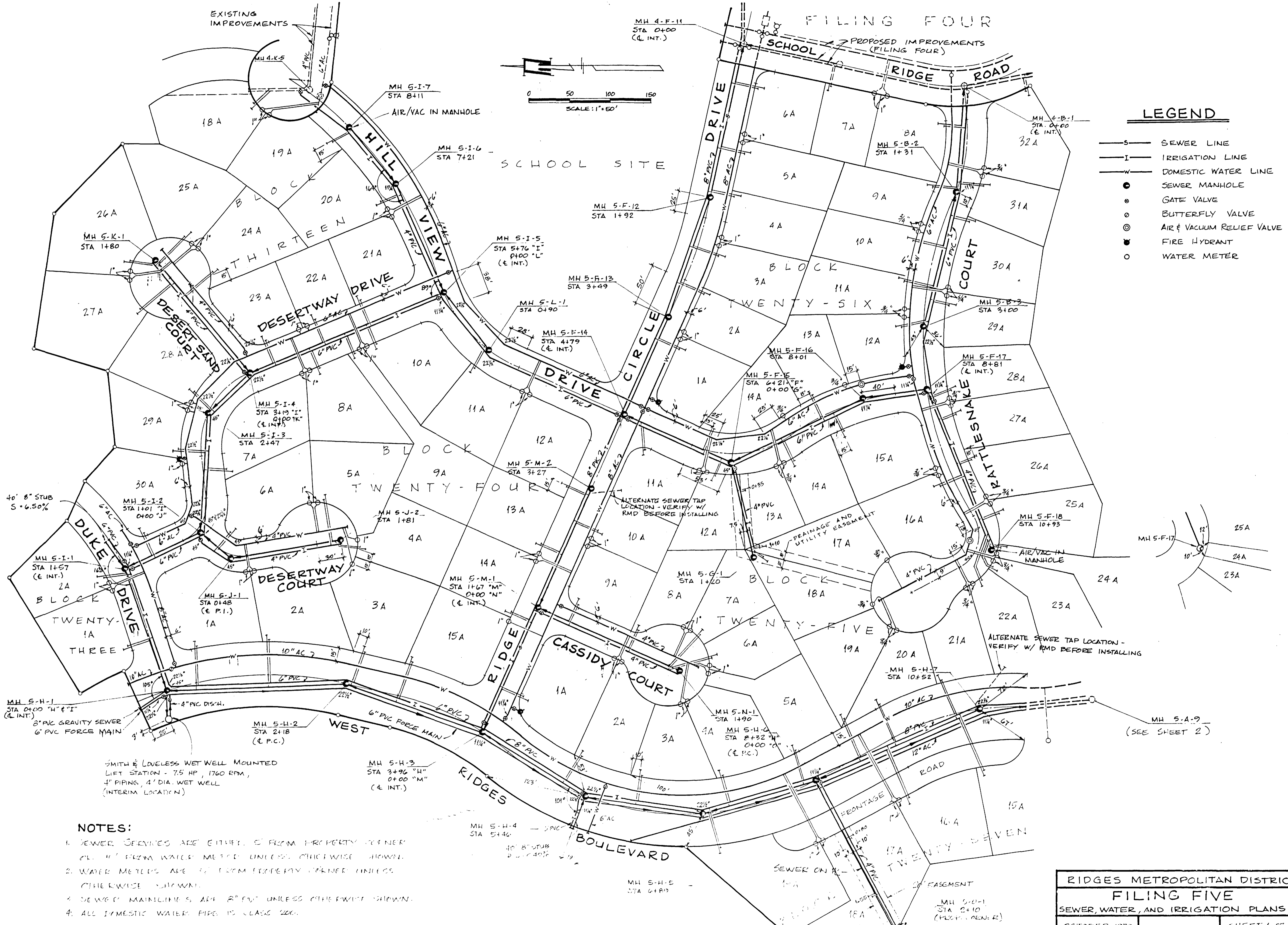


LEGEND

- Indicates utility is existing or planned in the development of The Ridges Filing No.5. Refer to its Utility Composite and construction plans for information and details.
- Indicates new tap location or rerouting of utility or tap shown in The Ridges Filing No. 5
- W— WATER LINE (UTE, RIDGES METRO)
- FH FIRE HYDRANT (GRAND JCT. FIRE DEPT.)
- WM 7&8— WATER METERS FOR LOTS 7 & 8 (RIDGES METRO)
- S— SEWER LINE AND MANHOLE (RIDGES METRO)
- s— SEWER TAP 4" UNLESS NOTED
- I— PRESSURIZED IRRIGATION LINE (RIDGES METRO)
- I— TAP TO PRESSURIZED IRRIGATION SYSTEM EACH TAP TO SERVE UP TO THREE LOTS (RIDGES METRO)
- E.G.T.C.— ELECTRIC, GAS, TELEPHONE AND CABLE T.V. IN COMMON TRENCH (PUBLIC SERVICE, MOUNTIAN BELL, UNITED CABLE)

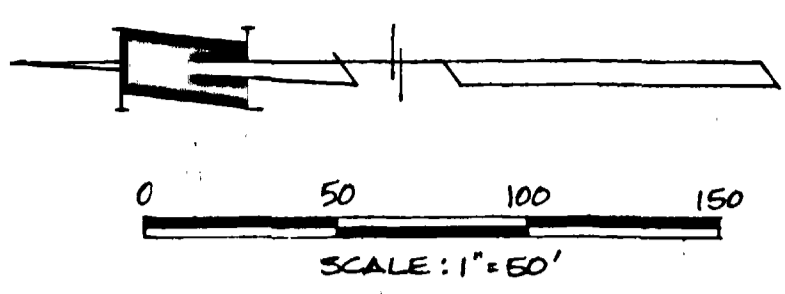


WESTERN ENGINEERS, INC.
UTILITY COMPOSITE
 REPLAT OF LOTS 22A THROUGH 30A,
 BLOCK TWENTY FIVE
 THE RIDGES FILING NO. FIVE
 MESA COUNTY, COLORADO
 DESIGNED T.K.H. DRAWN D.L.H. CHECKED T.K.H.
 GRAND JUNCTION, COLO. DWG. 363-907-B 11/10/80



LEGEND

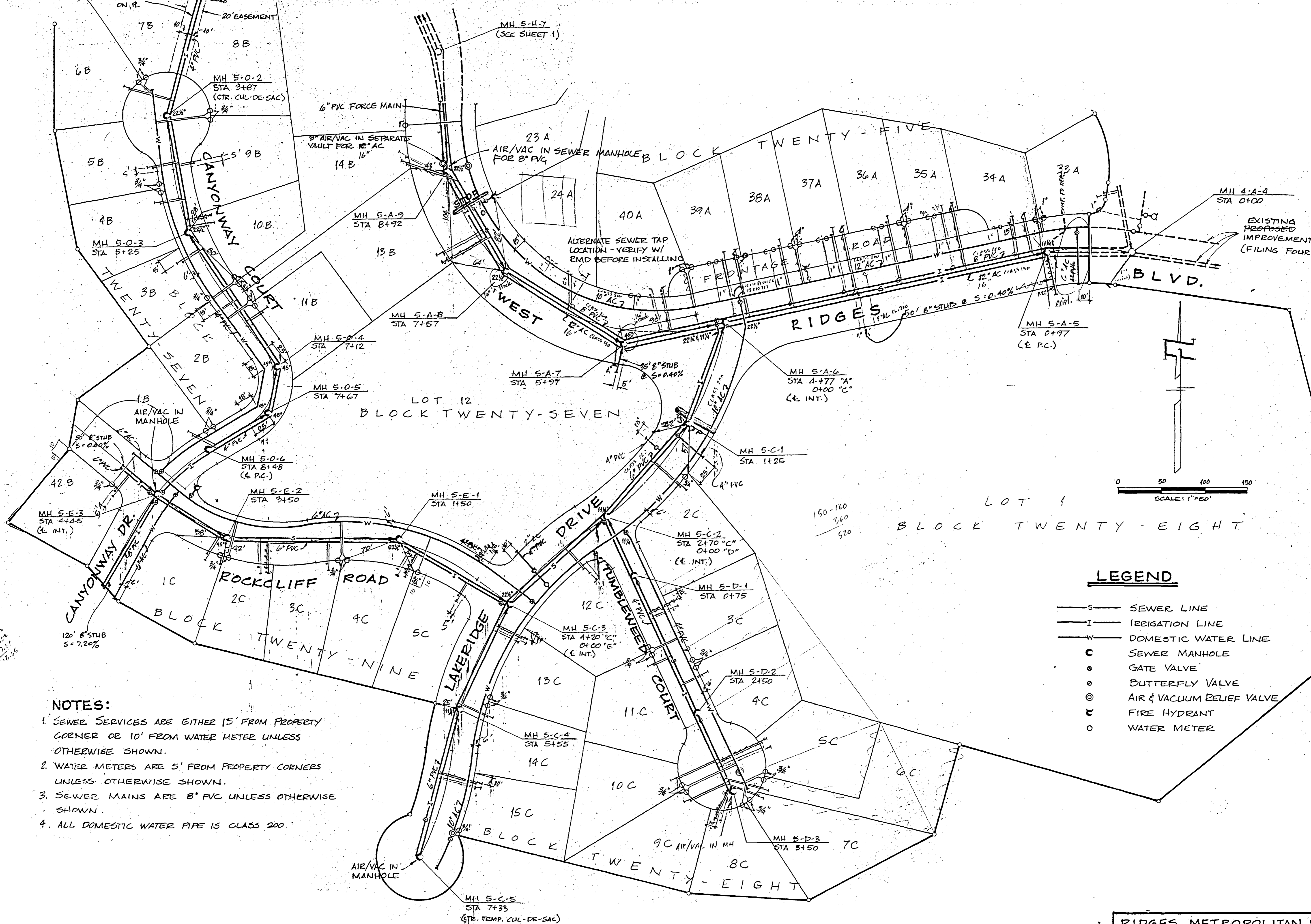
- S — SEWER LINE
- I — IRRIGATION LINE
- W — DOMESTIC WATER LINE
- SEWER MANHOLE
- GATE VALVE
- BUTTERFLY VALVE
- ⊙ AIR & VACUUM RELIEF VALVE
- ⊙ FIRE HYDRANT
- WATER METER



NOTES:

1. SEWER SERVICES ARE EITHER 6" FROM PROPERTY CORNER OR 4' FROM WATER METER UNLESS OTHERWISE SHOWN.
2. WATER METERS ARE 4' FROM PROPERTY CORNER UNLESS OTHERWISE SHOWN.
3. SEWER MAINLINE IS 24" 8" PVC UNLESS OTHERWISE SHOWN.
4. ALL DOMESTIC WATER PIPE IS CLASS 200.

RIDGES METROPOLITAN DISTRICT	
FILING FIVE	
SEWER, WATER, AND IRRIGATION PLANS	
OCTOBER, 1973	SHEET 1 OF 2



- NOTES:**
1. SEWER SERVICES ARE EITHER 15' FROM PROPERTY CORNER OR 10' FROM WATER METER UNLESS OTHERWISE SHOWN.
 2. WATER METERS ARE 5' FROM PROPERTY CORNERS UNLESS OTHERWISE SHOWN.
 3. SEWER MAINS ARE 8" PVC UNLESS OTHERWISE SHOWN.
 4. ALL DOMESTIC WATER PIPE IS CLASS 200.

LEGEND

—S—	SEWER LINE
—I—	IRRIGATION LINE
—W—	DOMESTIC WATER LINE
C	SEWER MANHOLE
o	GATE VALVE
o	BUTTERFLY VALVE
⊙	AIR & VACUUM RELIEF VALVE
⊕	FIRE HYDRANT
o	WATER METER

RIDGES METROPOLITAN DISTRICT
 FILING FIVE
 SEWER, WATER & IRRIGATION PLANS
 OCTOBER, 1979 SHEET 2 OF 9