

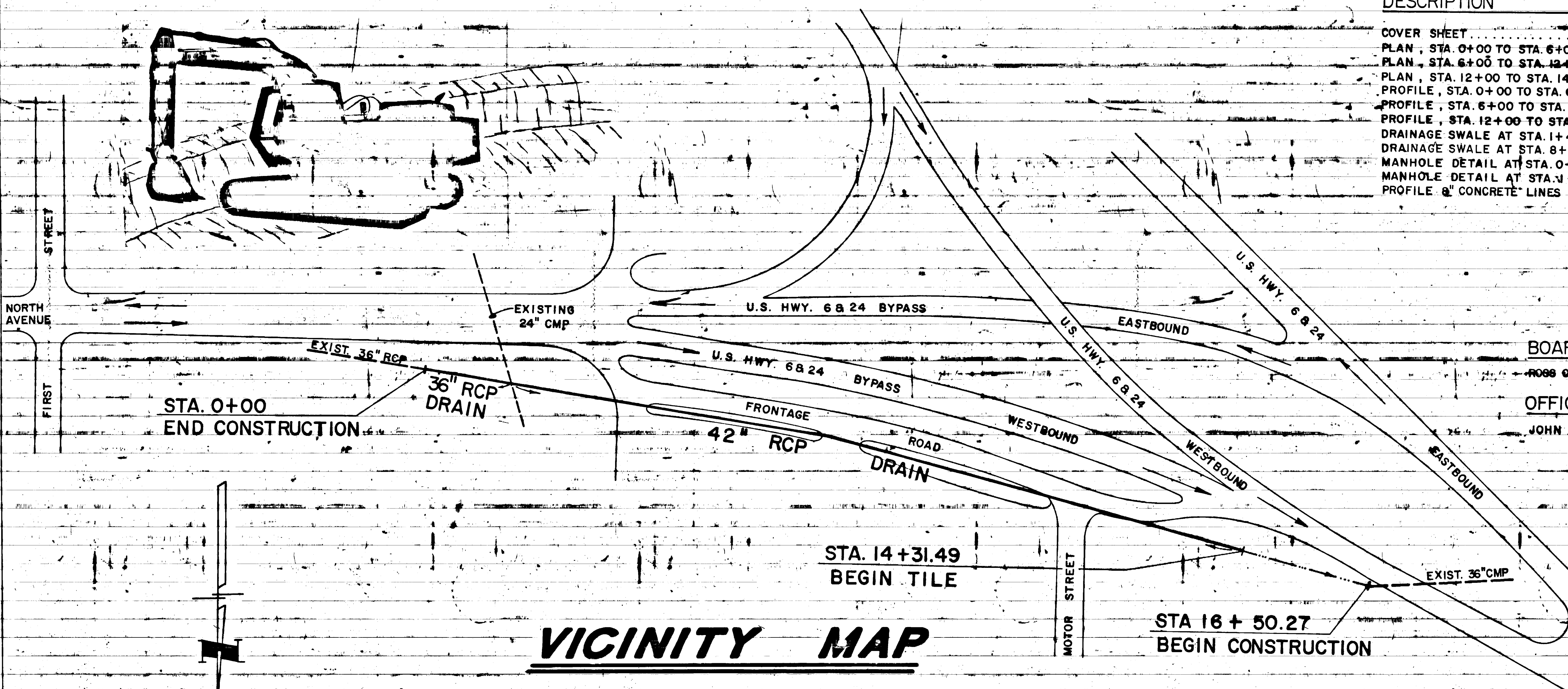
# GRAND JUNCTION DRAINAGE DISTRICT

## LIGRANI DRAIN RELOCATION

### 1989

### INDEX

DESCRIPTION	SHEET NO.
COVER SHEET	SHT. 1
PLAN, STA. 0+00 TO STA. 6+00	SHT. 2
PLAN, STA. 6+00 TO STA. 12+00	SHT. 3
PLAN, STA. 12+00 TO STA. 14+29.5	SHT. 4
PROFILE, STA. 0+00 TO STA. 6+00	SHT. 5
PROFILE, STA. 6+00 TO STA. 12+00	SHT. 6
PROFILE, STA. 12+00 TO STA. 14+31.49	SHT. 7
DRAINAGE SWALE AT STA. 1+48.02 & STA. 5+50.41	SHT. 8
DRAINAGE SWALE AT STA. 8+46.26	SHT. 9
MANHOLE DETAIL AT STA. 0+18.89	SHT. 10
MANHOLE DETAIL AT STA. 1+48.02 & STA. 14+14.14	SHT. 11
PROFILE & CONCRETE LINES J & 2	SHT. 12



BOARD OF DIRECTORS  
 ROSS G. DARNELL, JOHN V. RADER, LYLE HULBURT  
 OFFICE MANAGER  
 JOHN L. BALLAGH

### VICINITY MAP

AS - BUILT

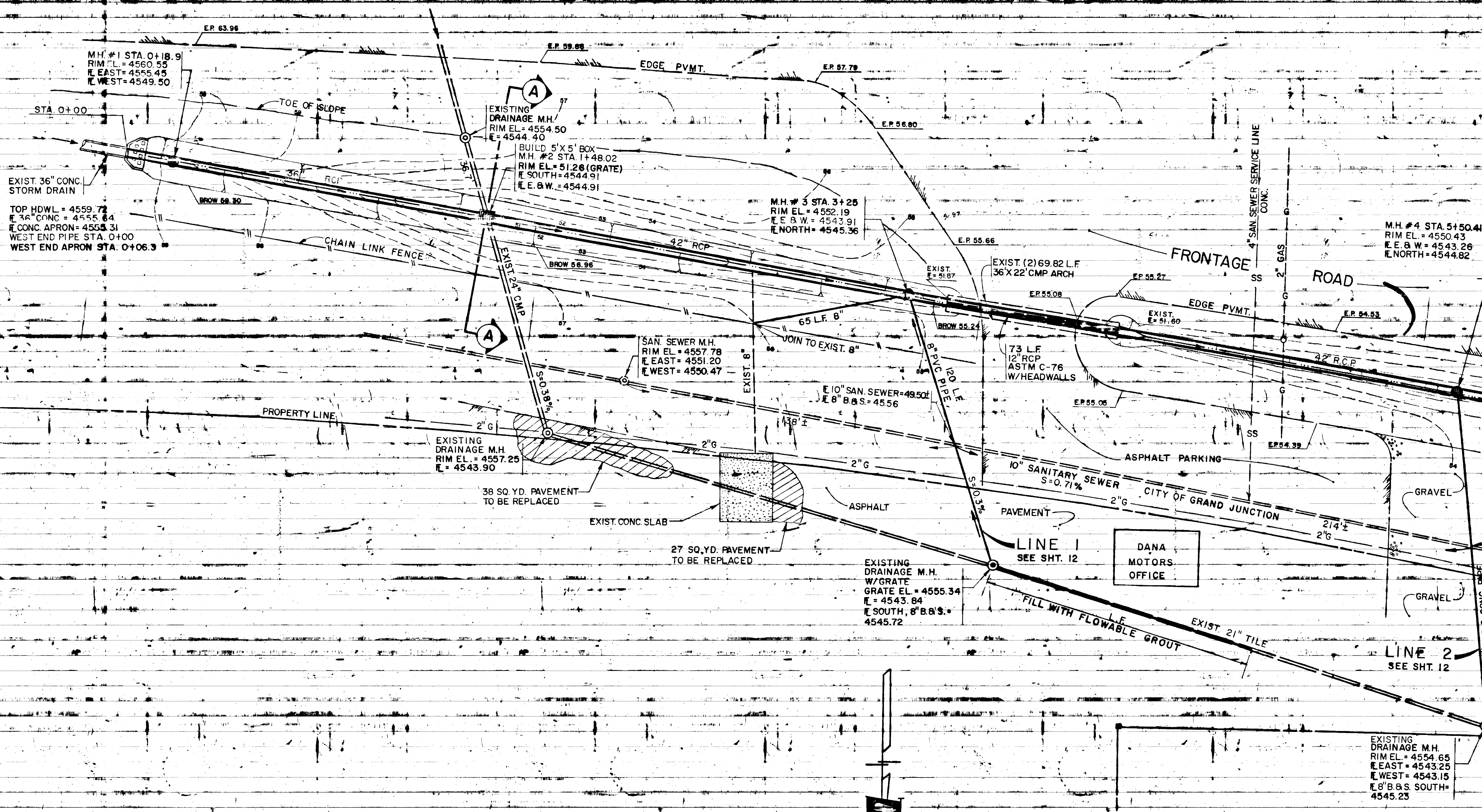
LIGRANI DRAIN  
 RELOCATION  
 SHEET

GRAND JUNCTION DRAINAGE DISTRICT  
 122 - 23 Road - P.O. Box 55246  
 Grand Junction, CO 81505  
 (970) 243-4368



6 8 24 BY-PASS

B.M. #28  
2" BRASS CAP  
SET IN EAST CURB RETURN,  
ISLAND MEDIAN  
ELEV. 4568.81



M.H. #1 STA. 0+18.9  
RIM EL. = 4560.55  
E. EAST = 4555.45  
E. WEST = 4549.50

EXIST. 36" CONC. STORM DRAIN  
TOP HDWL. = 4559.72  
E. 36" CONC. = 4555.64  
E. CONC. APRON = 4553.31  
WEST END PIPE STA. 0+100  
WEST END APRON STA. 0+06.3

EXISTING DRAINAGE M.H.  
RIM EL. = 4554.50  
E. = 4544.40

BUILD 5' X 5' BOX  
M.H. #2 STA. 1+48.02  
RIM EL. = 51.28 (GRATE)  
E. SOUTH = 4544.91  
E. E. & W. = 4544.91

M.H. #3 STA. 3+25  
RIM EL. = 4552.19  
E. E. & W. = 4543.91  
E. NORTH = 4545.36

M.H. #4 STA. 5+50.41  
RIM EL. = 4550.43  
E. E. & W. = 4543.26  
E. NORTH = 4544.82

SAN. SEWER M.H.  
RIM EL. = 4557.78  
E. EAST = 4551.20  
E. WEST = 4550.47

EXISTING DRAINAGE M.H.  
RIM EL. = 4557.25  
E. = 4543.90

EXISTING DRAINAGE M.H.  
W/GRATE  
GRATE EL. = 4555.34  
E. = 4543.84  
E. SOUTH, 8" B.B.S. = 4545.72

EXISTING DRAINAGE M.H.  
RIM EL. = 4554.65  
E. EAST = 4543.25  
E. WEST = 4543.15  
E. 8" B.B.S. SOUTH = 4545.23

SCALE: 1" = 20'

AS - BUILT

+MATCH

LIGRANI DRAINAGE  
RELOCATION

SHEET

GRAND JUNCTION DRAINAGE DISTRICT  
722 - 23 Road • P.O. Box 55246  
Grand Junction, CO 81505  
(303) 242-4343

Note: impossible to scan please see original 02080903.tif

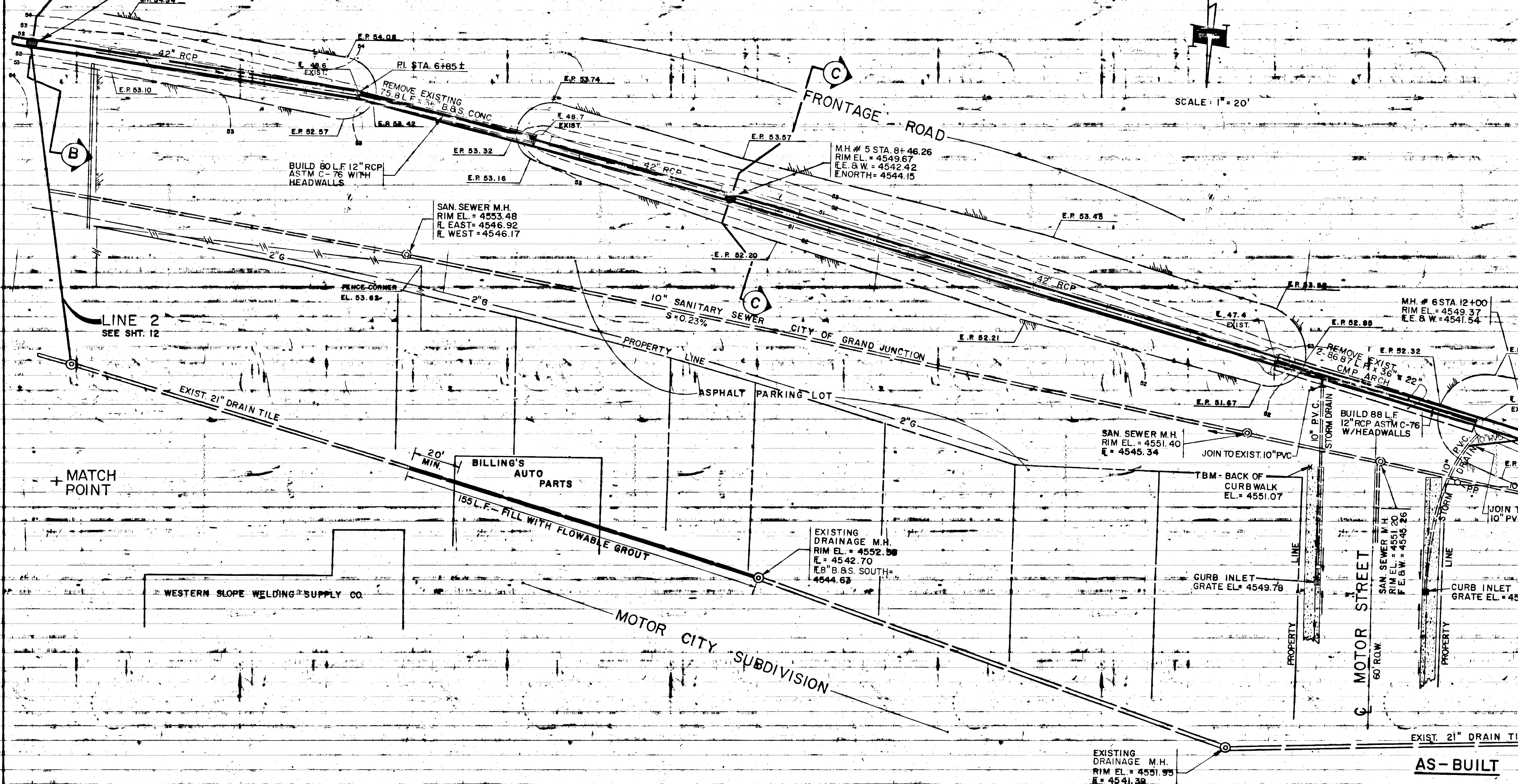


MATCH POINT

M.H. # 4 STA. 5+50.41  
RIM EL. = 4550.43  
E.E. & W. = 4543.26  
E.NORTH = 4544.82

SCALE: 1" = 20'

FRONTAGE ROAD



LINE 2  
SEE SHT. 12

MATCH POINT

EXIST. 21" DRAIN TILE

AS-BUILT

LIGRANI DRAIN  
RELOCATION

SHEET

GRAND JUNCTION DRAINAGE DISTRICT  
732 - 23 Road - P.O. Box 55246  
Grand Junction, CO 81505  
(303) 242-4345

Note: impossible to scan please see original 02080903.tif



MATCH POINT

FRONTAGE ROAD

CITY OF GRAND JUNCTION

U.S. 6 & 50 WEST

MOTOR CITY SUBDIVISION

MATCH POINT

WESTERN SLOPE DODGE

COLORADO STATE GAME, FISH & PARKS DEPARTMENT

AS-BUILT

WEST LAKE

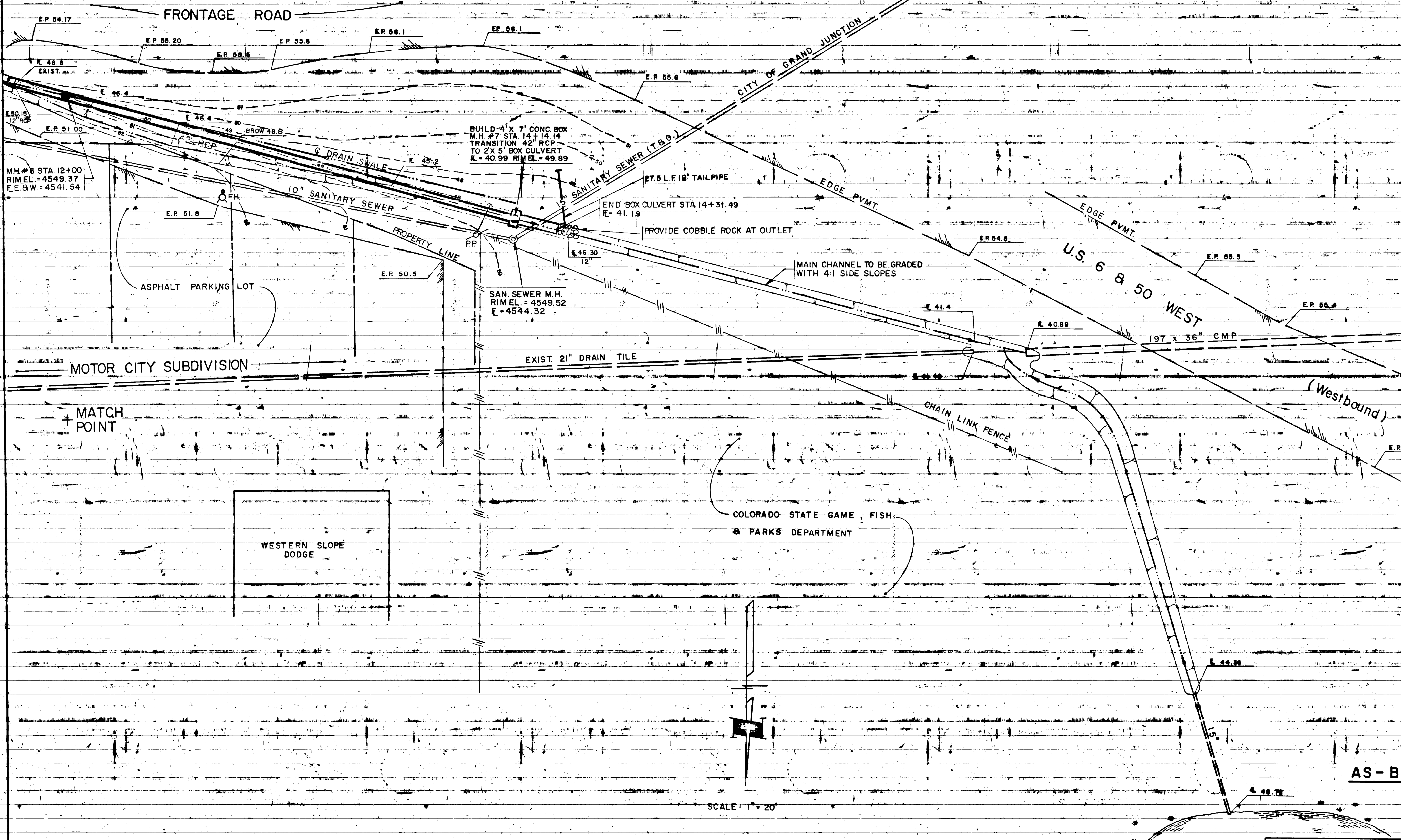
LIGRANI DRAIN RELOCATION

SHEET 4

WATER SURFACE 5/31/89  
EL. = 4546.22

GRAND JUNCTION DRAINAGE DISTRICT  
722 - 23 Road • P.O. Box 55246  
Grand Junction, CO 81505  
(903) 242-4345

SCALE: 1" = 20'



Note: impossible to scan please see original 02080904.tif





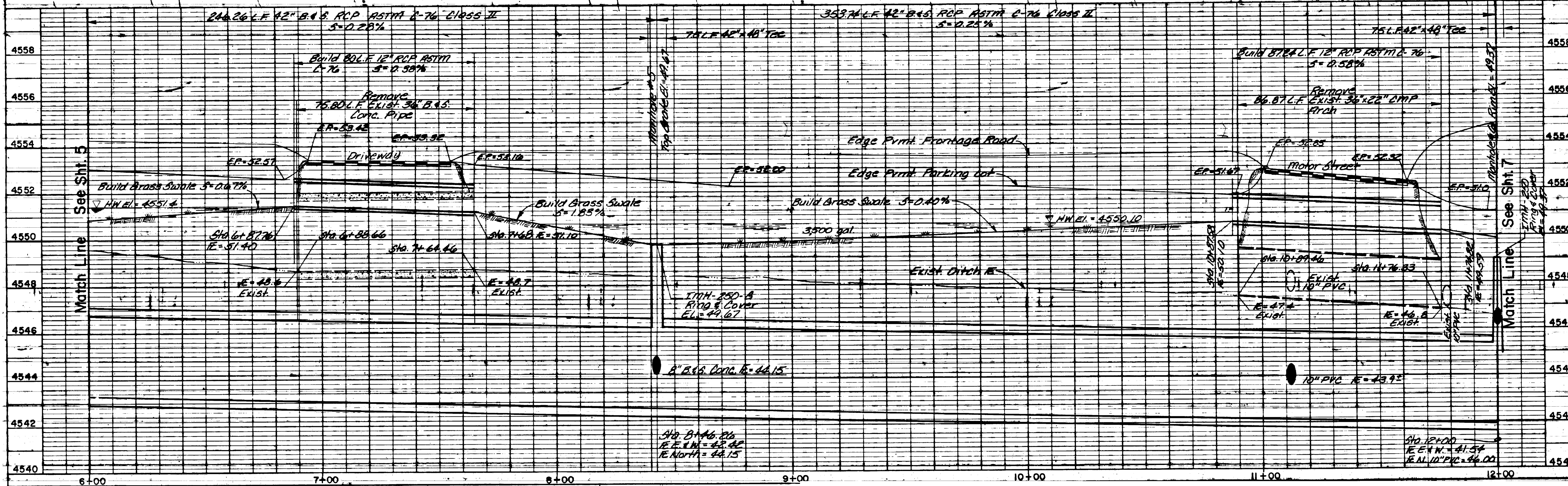


AS - BUILT

LIGRANI DRAIN RELOCATION

SHEET 6 OF 12

GRAND JUNCTION DRAINAGE DISTRICT  
722 - 23 Road • P.O. Box 55246  
Grand Junction, CO 81508  
(970) 242-4348



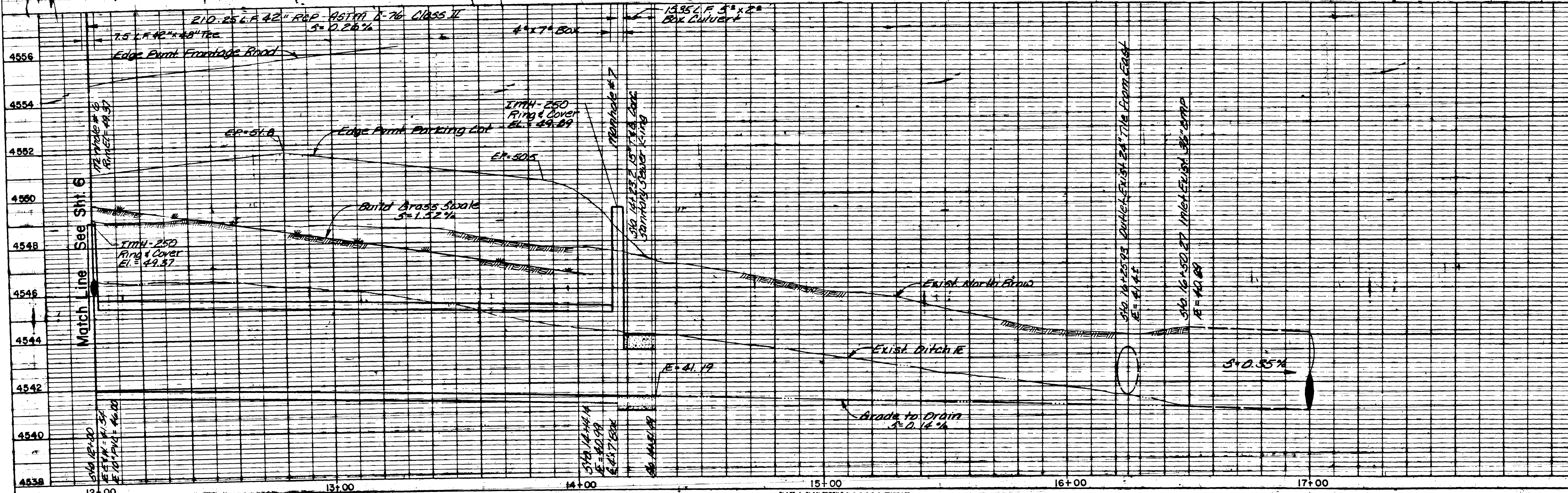


AS-BUILT

LIGRANT DRAIN  
RELOCATION

SHE

GRAND JUNCTION DRAINAGE DISTRICT  
732 - 23 Road - P.O. Box 55246  
Grand Junction, CO 81505  
(908) 243-4348



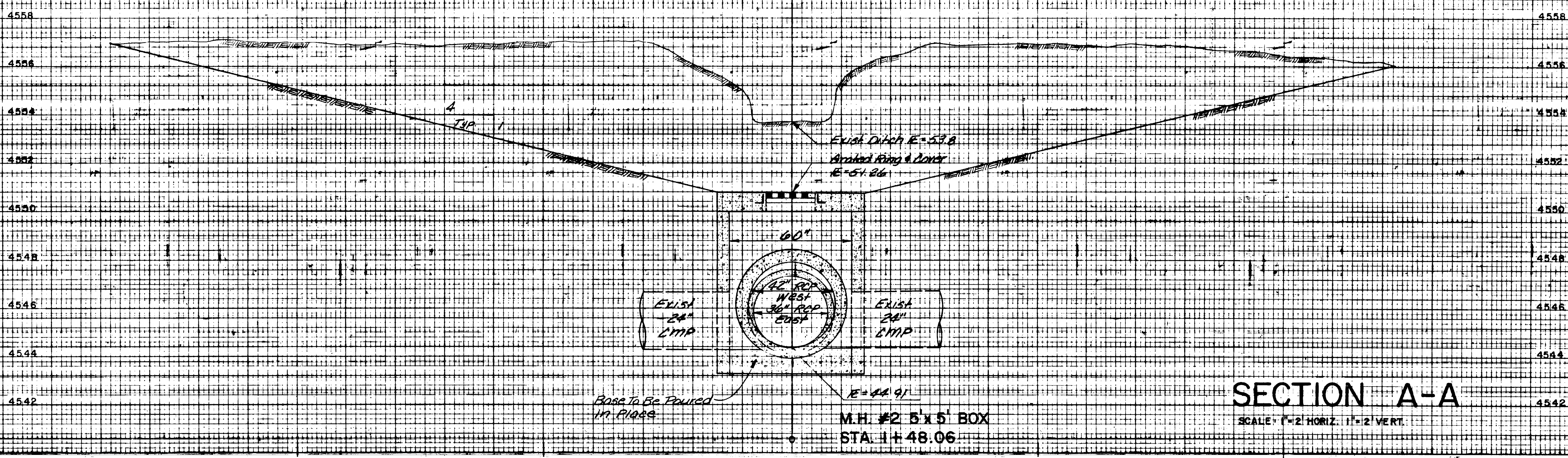
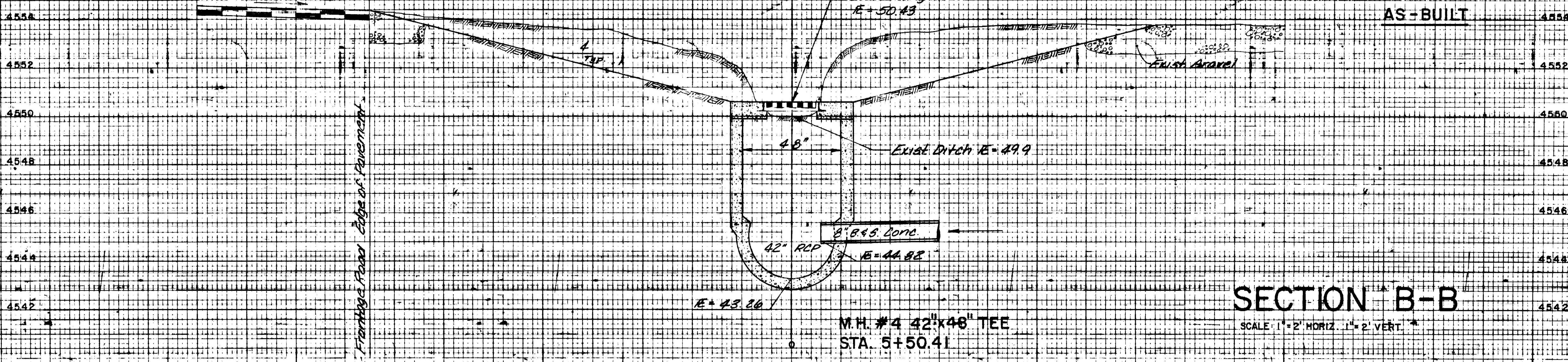
PROFILE SCALE: 1" = 2' VERT. 1" = 20' HORIZ.

PLATE 1 PLAN-PROFILE O. P. & E. STANDARD

Note: impossible to scan please see original  
02081107.tif



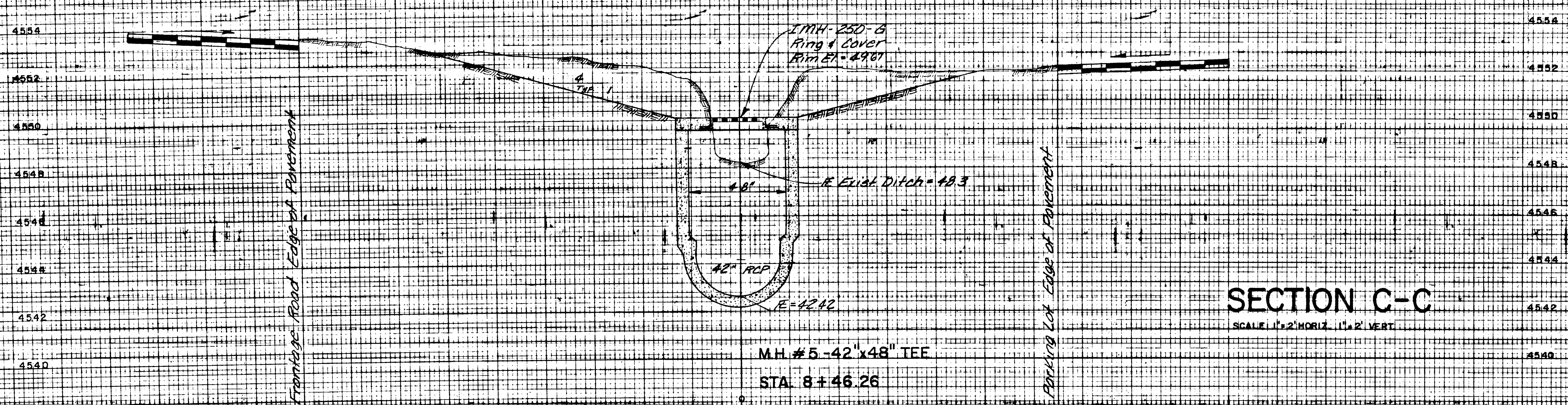
GRAND JUNCTION DRAINAGE DISTRICT  
722 - 23 Road - P.O. Box 55246  
Grand Junction, CO 81508  
(970) 243-4345







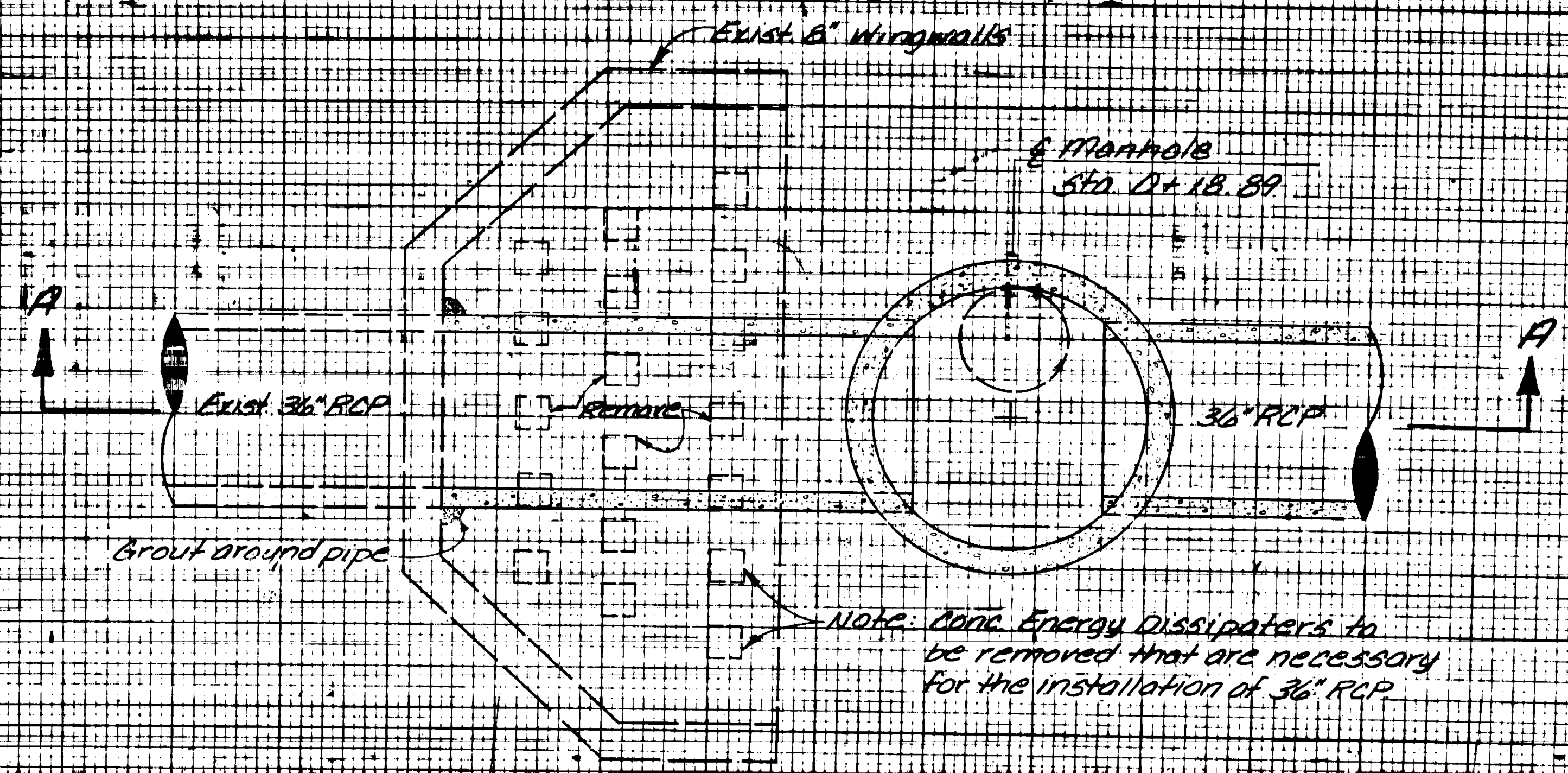
AS-BUILT



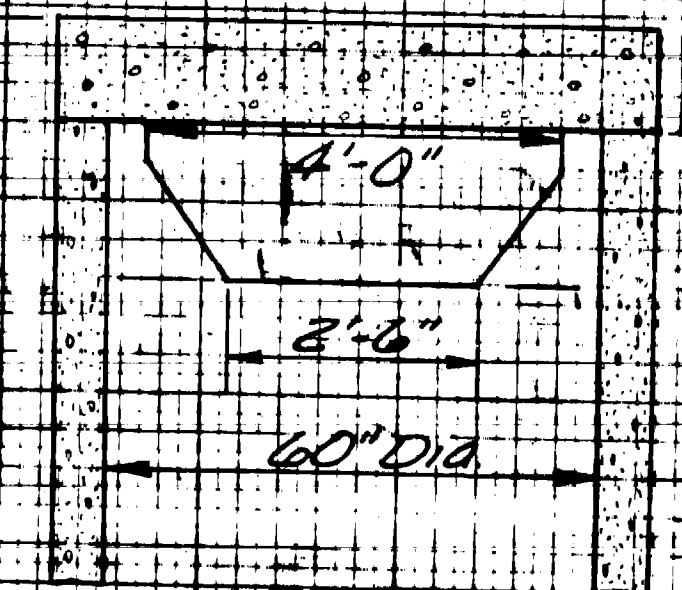
SECTION C-C  
SCALE 1" = 2' HORIZ. 1" = 2' VERT.



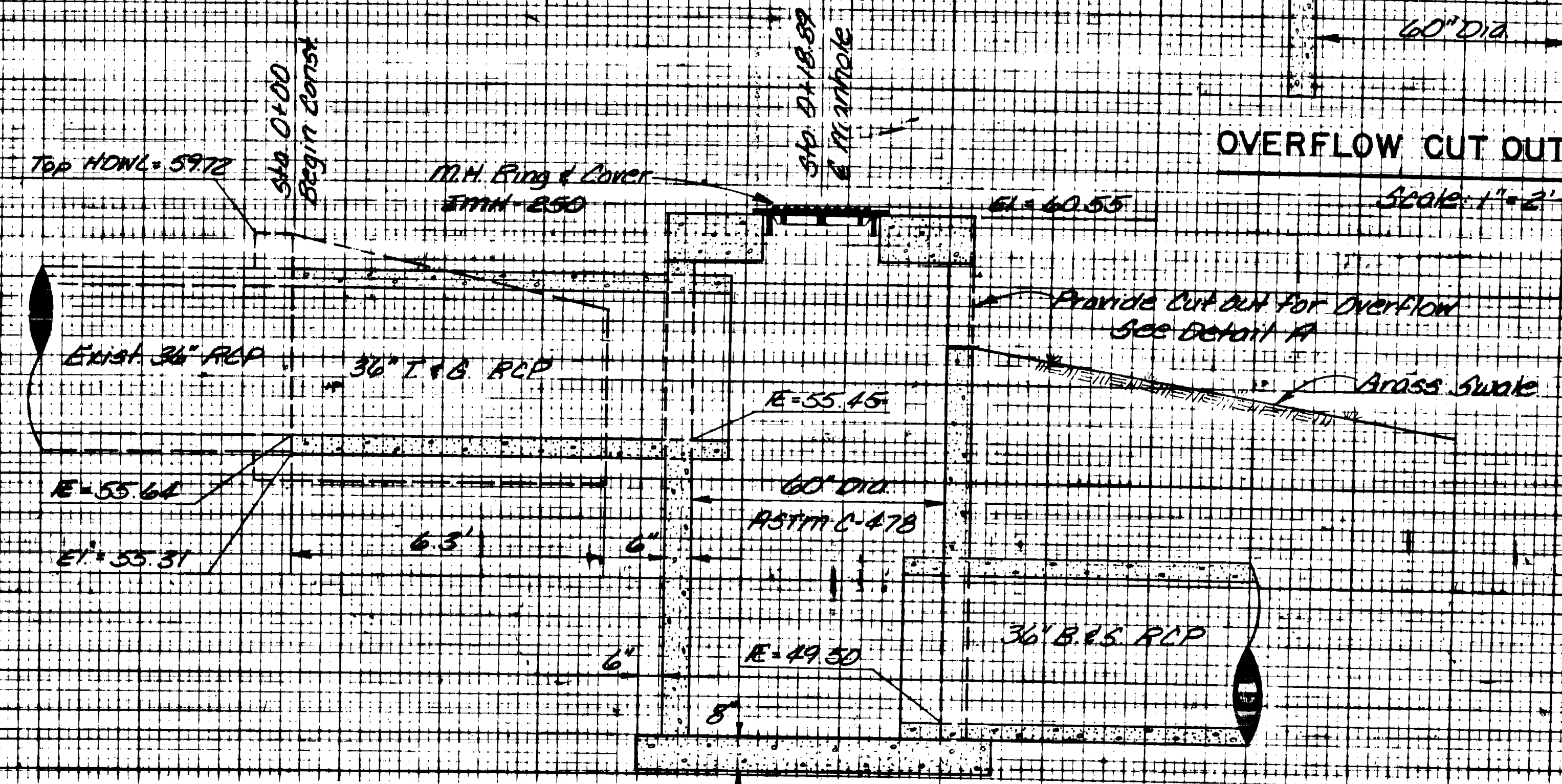
AS-BUILT



60" DIA. MANHOLE # 1 - PLAN  
STA. 0+18.89  
Scale: 1" = 2'-0"

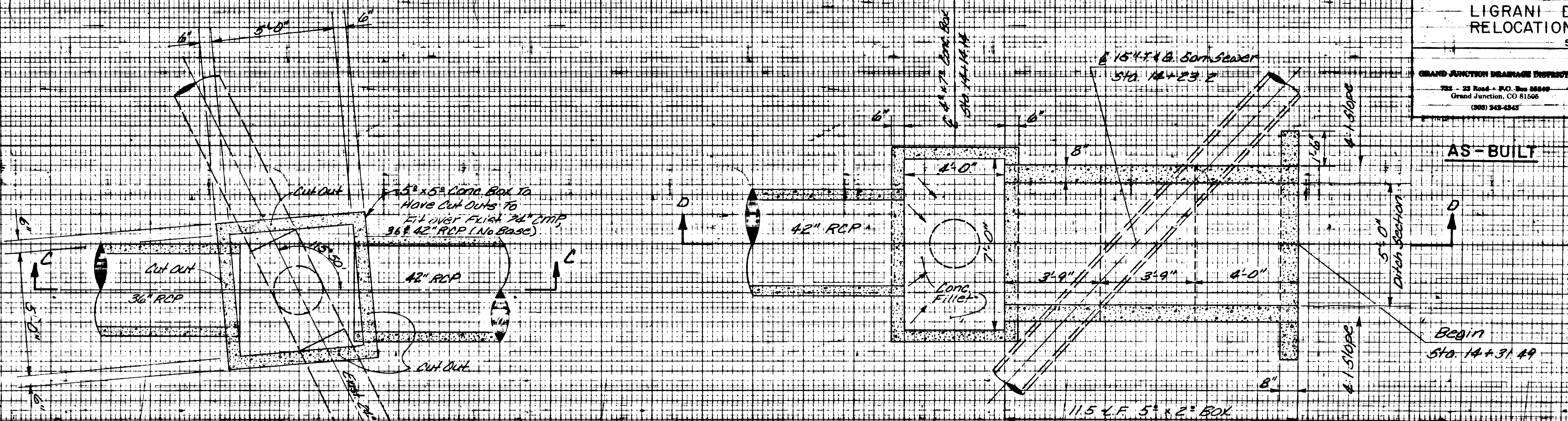


OVERFLOW CUT OUT-DETAIL A  
Scale: 1" = 2'-0"



MANHOLE # 1 - SECTION A-A  
STA. 0+18.89  
Scale: 1" = 2'-0"



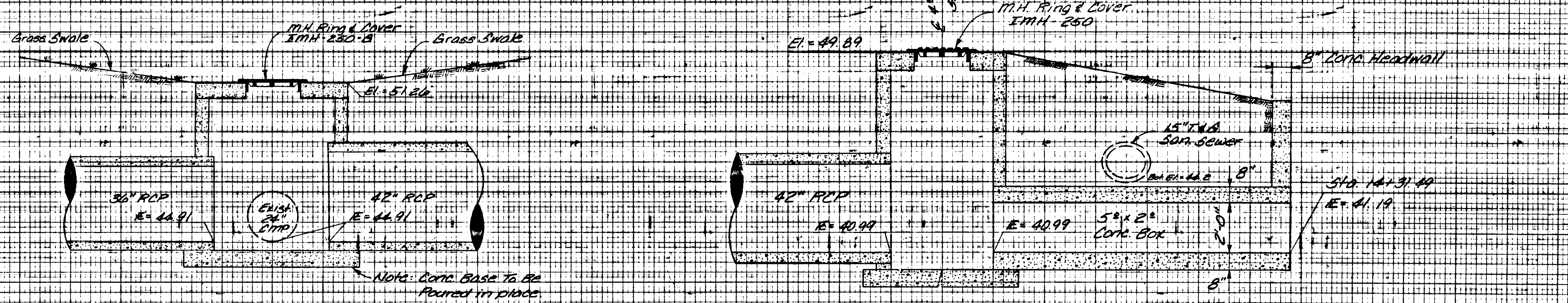


MANHOLE #2, 5'x5' CONC. BOX - PLAN  
STA. 1+48.02

Scale: 1" = 2'-0"

MANHOLE #7, 4'x7' CONC. BOX - PLAN  
STA. 14+14.14

Scale: 1" = 2'-0"



MANHOLE #2 - SECTION C-C  
STA. 1+48.02

Scale: 1" = 2'-0"

MANHOLE #7 - SECTION D-D  
STA. 14+14.14

Scale: 1" = 2'-0"

5'x5' Conc. Box to have cut outs to fill over flush 24" DTP, 36" 42" RCP (No Base)

Note: Conc. Base to be poured in place

AS-BUILT

Begin Sta. 14+31.49

Sta. 14+31.49  
E=41.19



