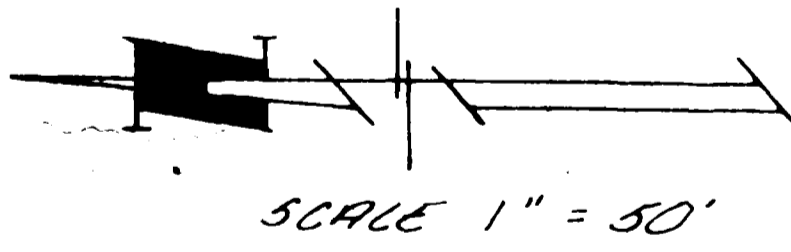
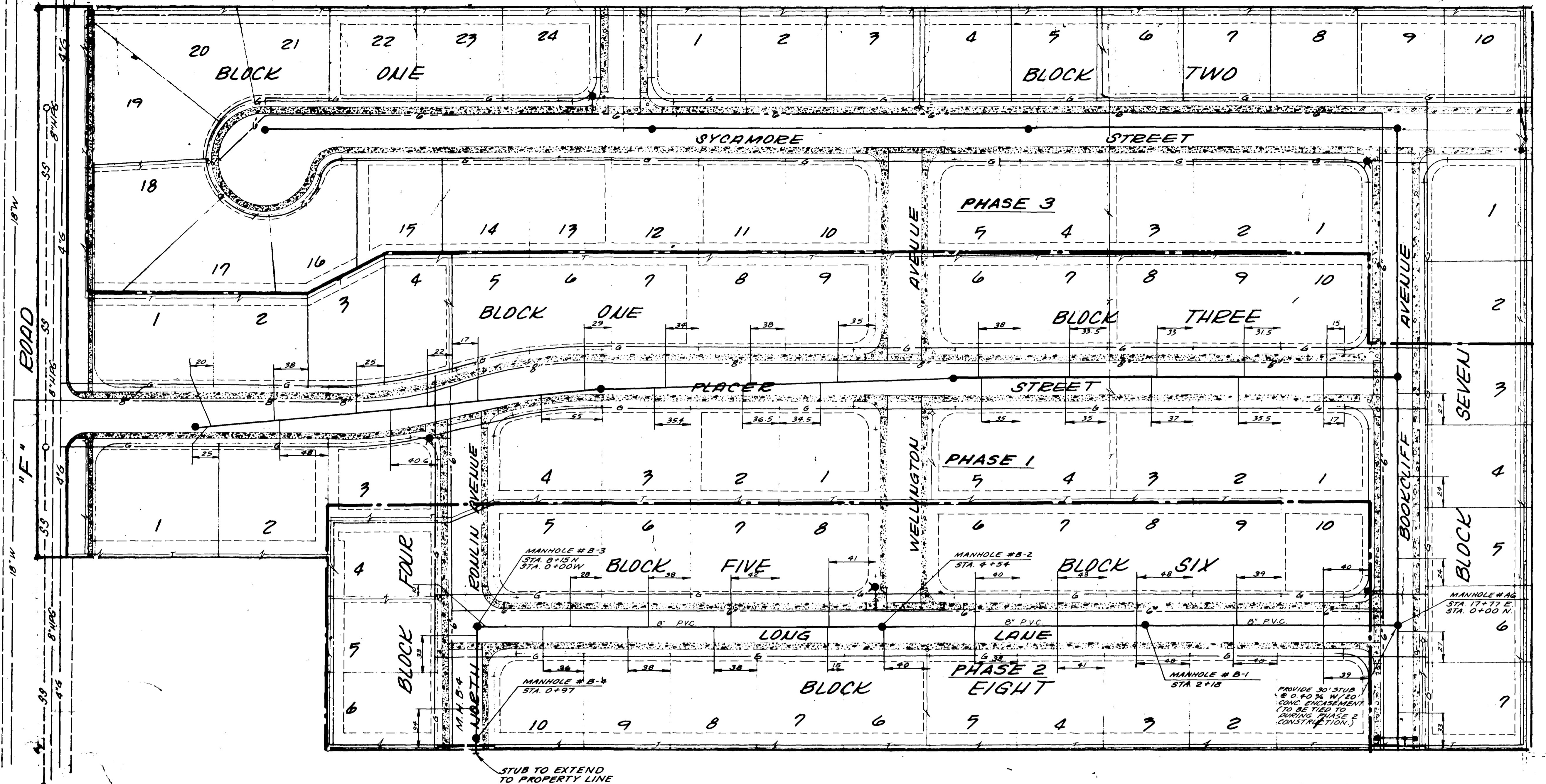


REVISIONS	BY

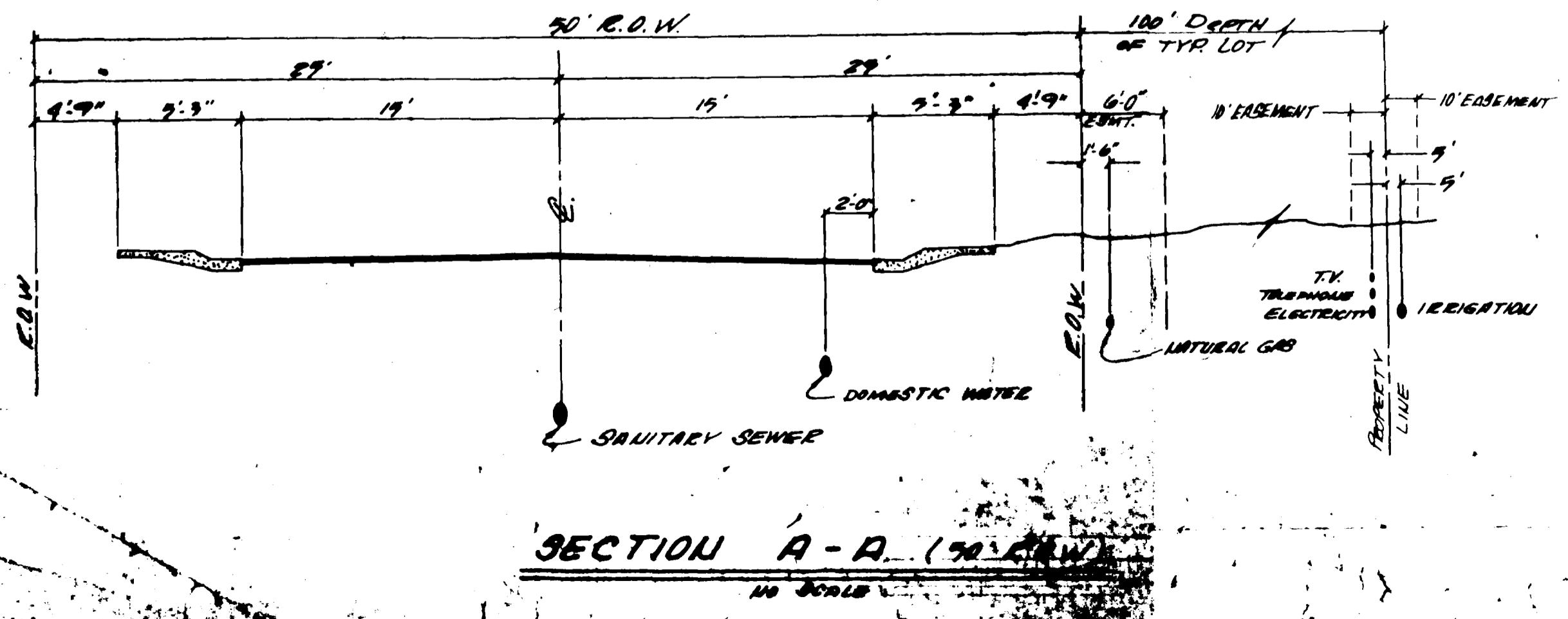
PARAGON ENGINEERING, INC.  
P.O. BOX 30174  
DENVER, COLORADO 80230



SUNNY MEADOWS SUBDIVISION  
MESA COUNTY, COLORADO  
UTILITIES COMPOSITE




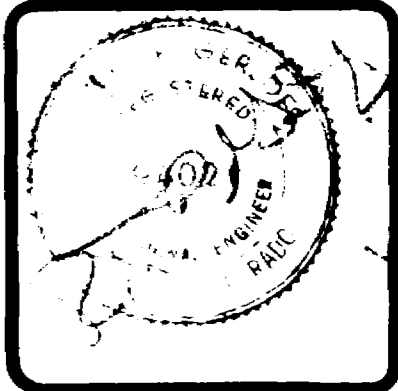
- LEGEND**
- SANITARY SEWER MANHOLE
  - 8" WATER PIPE AS SHOWN
  - FIRE HYDRANT 6" LINE
  - IRRIGATION
  - NATURAL GAS
  - ELECTRIC, CABLE TV, TELEPHONE
  - EASEMENT
- GENERAL NOTES**
- TIES TO EXISTING SHOWN ON THIS PLAN AND APPROPRIATE AND MODIFY PROPOSED LOCATIONS. BEFORE ANY CONSTRUCTION, EACH UTILITY LINE MUST BE LOCATED FOR THE LOCATION OF THESE UTILITIES. LOT AND EASEMENT DIMENSIONS ARE AS SHOWN ON THE ORIGINAL PLAN FOR SUNNY MEADOWS SUBDIVISION.
- EXISTING UTILITIES ARE TO BE LEFT OR NOT SHOULD BE LEFT.



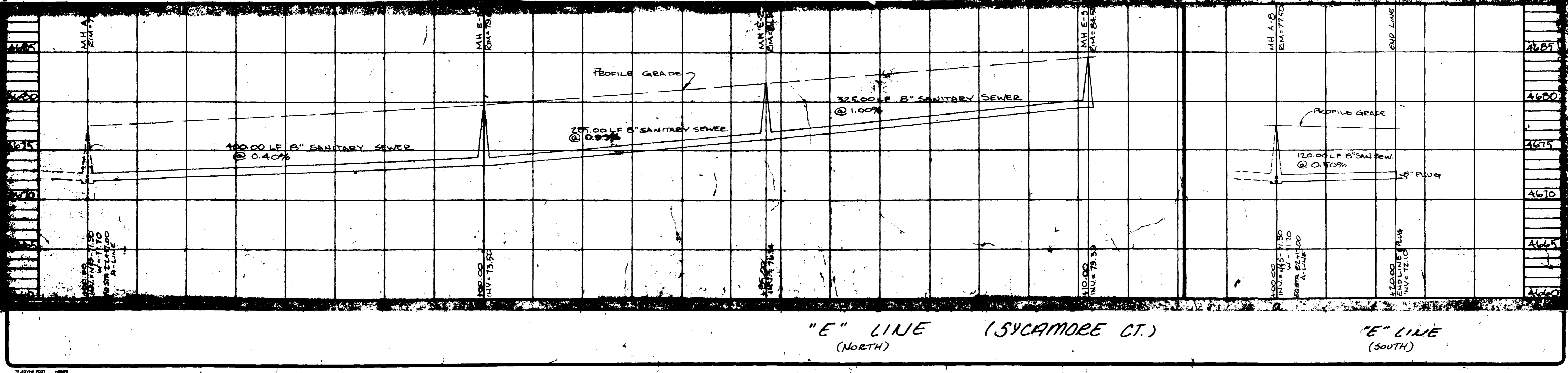
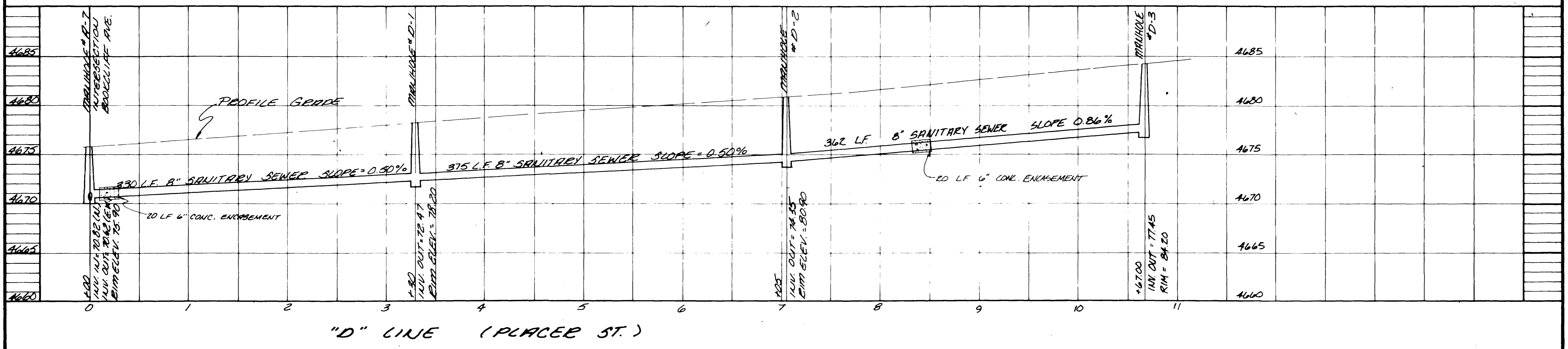
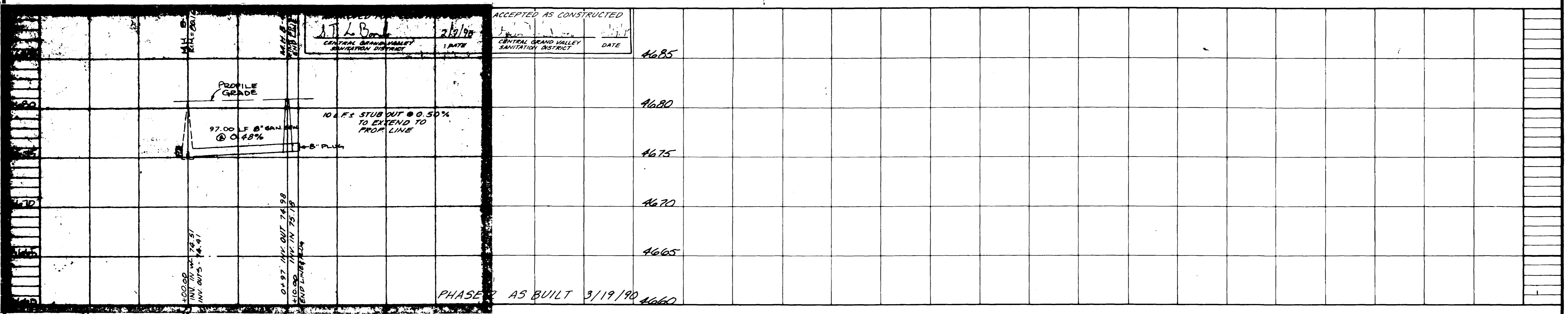
02-113

REVISIONS	BY
MOVE M.H. C-3 TO LINE D	
3-29-83	CMB
BLIND & PLUG	KEP
4-7-83	KEP

**PARAGON ENGINEERING, INC.**  
P.O. Box 2872  
Grand Junction, Colorado 81501 (303) 41-9888

SUNNY MEADOWS SUBDIVISION  
MESA COUNTY, COLORADO  
SANITARY SEWER PROFILE



"E" LINE (SYCAMORE CT.)  
(NORTH)

"E" LINE  
(SOUTH)

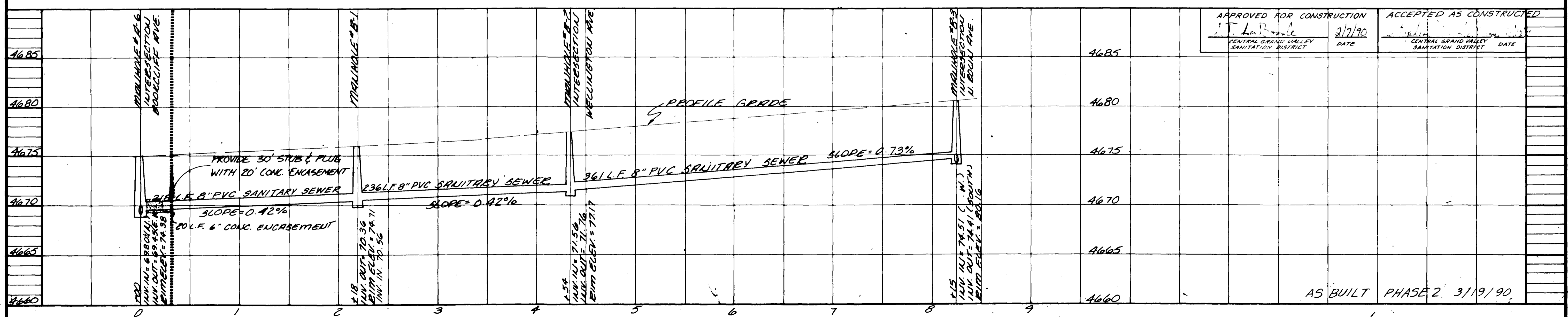
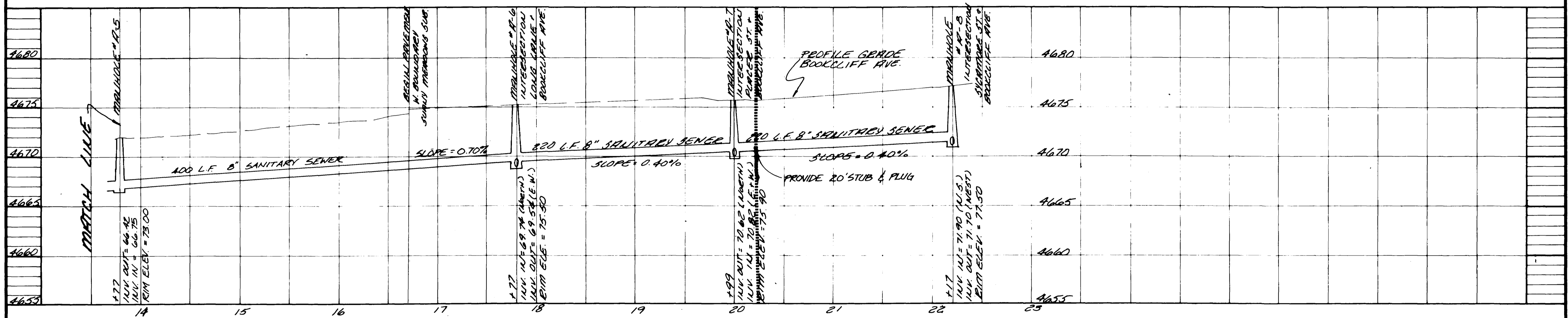
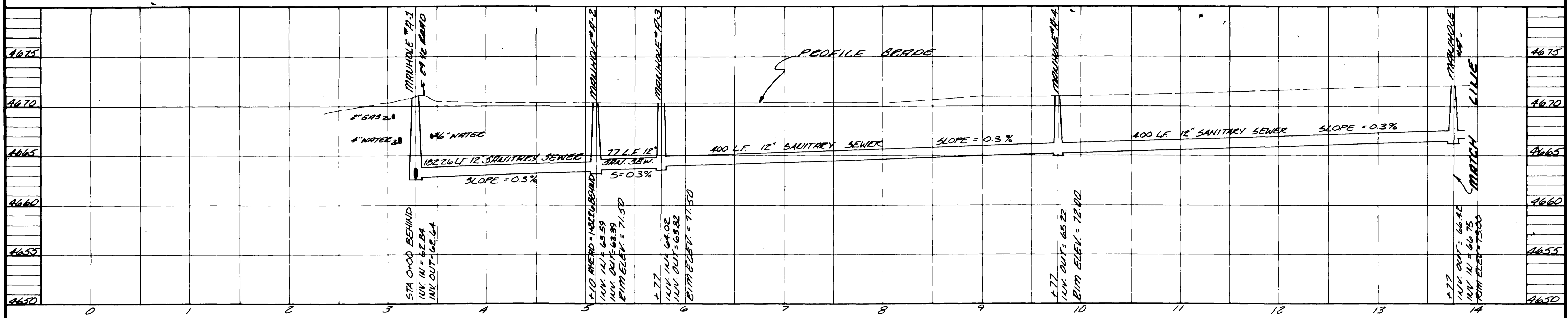


REVISIONS	BY
MH A-1 TO MH A-L	
CHANGES TO INT	
4-1-83	W.M.R.

**PARAGON ENGINEERING, INC.**  
 P.O. Box 3872  
 Grand Junction, Colorado 81501 (303) 243-8986



SUNNY MEADOWS SUBDIVISION  
 MESA COUNTY, COLORADO  
 SANITARY SEWER PROFILE



APPROVED FOR CONSTRUCTION <i>J.T. LaBelle</i> CENTRAL GRAND VALLEY SANITATION DISTRICT	DATE 2/7/90	ACCEPTED AS CONSTRUCTED <i>[Signature]</i> CENTRAL GRAND VALLEY SANITATION DISTRICT	DATE
---	----------------	--	------

AS BUILT PHASE 2 3/19/90