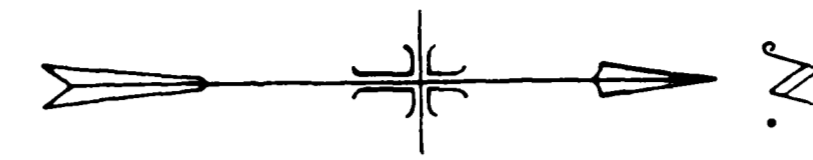


27 ROAD



1206  
1651  
43

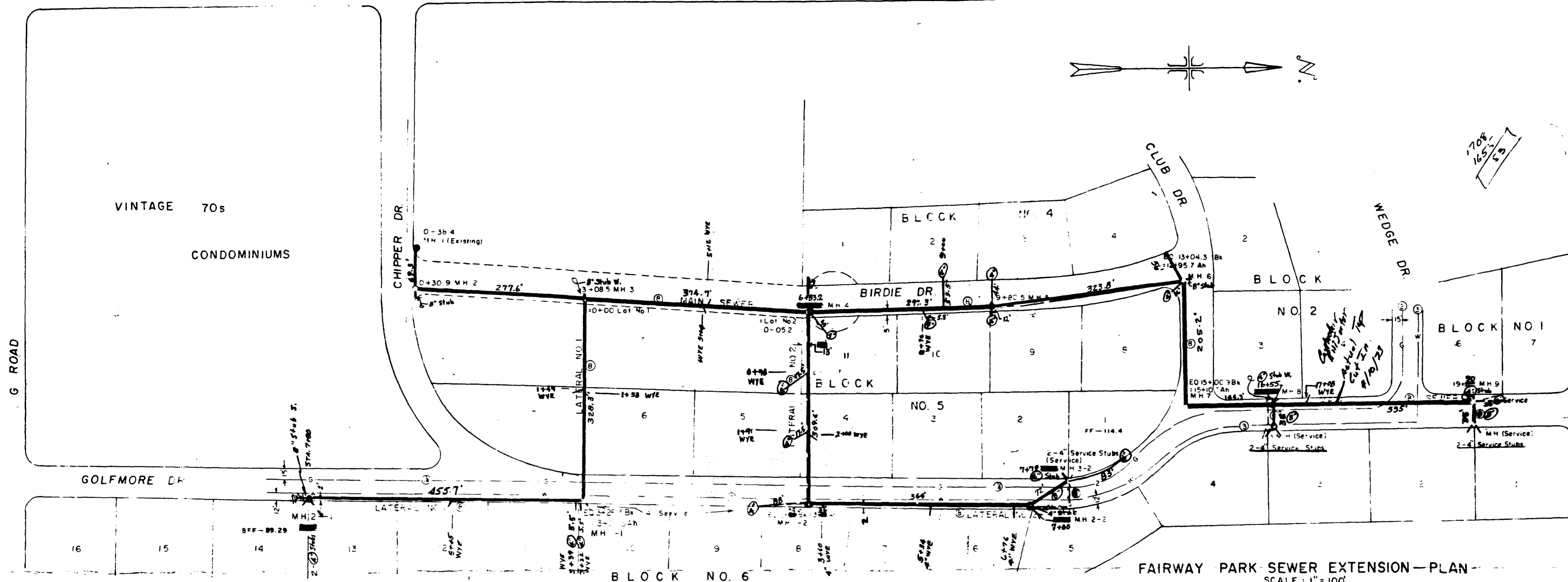
**SPECIFICATIONS**

General: Unless otherwise shown on the approved drawing, work shall conform to applicable requirements of Chapter 2 Design of Sewers in "Criteria Used in Review Of Wastewater Treatment Facilities-COLORADO Department of Health".

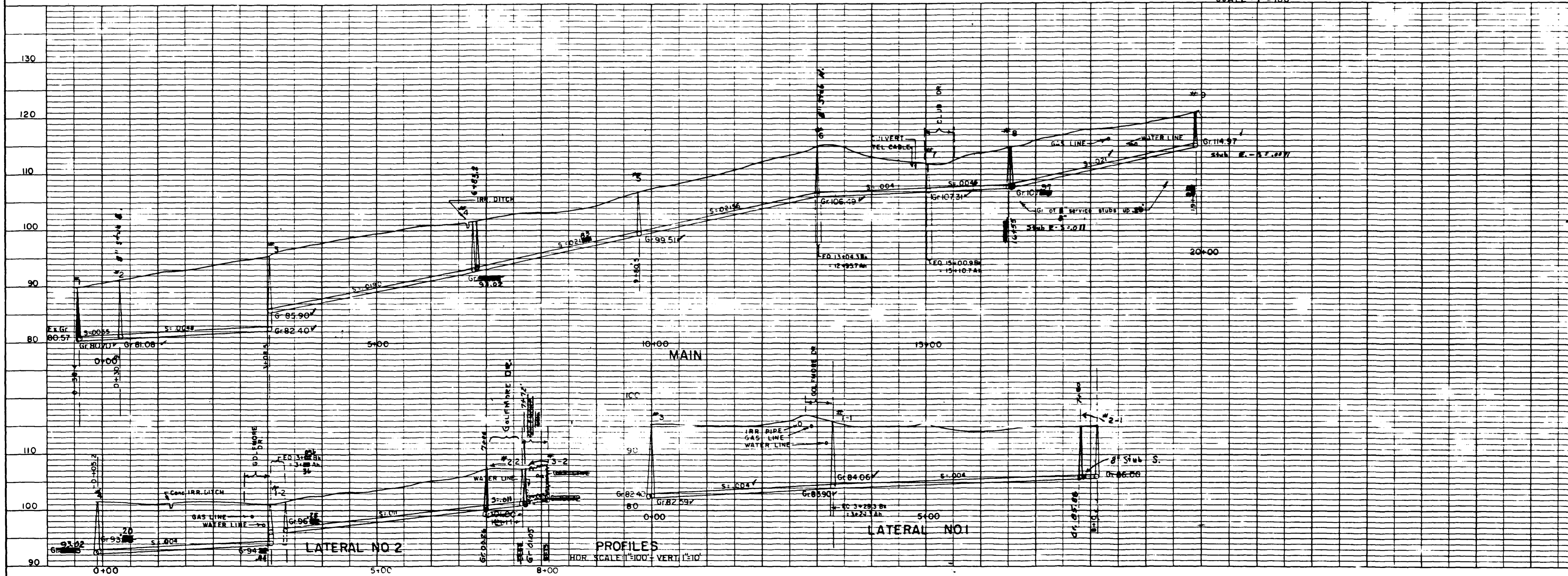
Materials: Sewer Pipe and Fittings  
Extra Strength Concrete - ASTM DESIGNATION C14  
Extra Strength VC Pipe - ASTM DESIGNATION C400  
Joints (Concrete Pipe) - ASTM DESIGNATION C443  
(VC Pipe) - ASTM DESIGNATION C425  
Asbestos Cement Pipe - Fed. Spec. 55-F-331b  
Gaskets, Gaskets and Fittings to be furnished by the manufacturer of the pipe being furnished.  
Class 1500 permissible except 3 Rd. Kings Class 2400 required at Road Crossings

Manholes and Covers  
Precast Concrete Manhole Sections - ASTM C478  
Frames and Covers - Light Duty (250 lbs.) as manufactured by Castings, Inc. for the City of Grand Junction.

Installation Requirements  
Vitrified Clay - According to ASTM C12.  
Concrete - Same as required for VC pipe.  
Asbestos Cement - Spec. 55-370-54 or equal.  
Permissible classes, as referred to above, based on 2'-6" trench and recommended bedding and compaction, as shown in the manufacturer installation manual.  
Manholes shall be installed on monolithically placed concrete as directed.  
Appurtenances, such as stubs, wyes and cleanouts to be installed as directed.



FAIRWAY PARK SEWER EXTENSION - PLAN  
SCALE: 1"=100'



QUANTITIES FOR INSTALLATION		
DESCRIPTION	QUANTITY	AS CONSTRUCTED
Manholes	15	15
8" Inlet Sewer	3700 LF	3693'
4" Sewer Lines	352 LF	596'
Block 4" Wyes	10	10
Road Crossings	3	3
VC Concrete Service Stubs	9	9

Notes:  
 1. All quantities are based on plan and profile.  
 2. All quantities are based on 10' trench and recommended bedding and compaction, as shown in the manufacturer installation manual.  
 3. All quantities are based on 10' trench and recommended bedding and compaction, as shown in the manufacturer installation manual.  
 4. All quantities are based on 10' trench and recommended bedding and compaction, as shown in the manufacturer installation manual.

AS CONSTRUCTED IN RED  
1/21/94

WESTERN ENGINEERS, INC.  
PLAN - PROFILE

FAIRWAY PARK SUBD.  
SEWER EXTENSIONS  
MESA COUNTY, COLORADO

PREPARED BY: [Signature]  
GRAND JUNCTION, CO. 81501