

NOTE: CONSTRUCTION TESTING AND AS BUILT DRAWINGS BY WESTERN ENGINEERS, INC.
 CONSTRUCTION STAKING BY M.A.P., INC.
 DESIGN BY OTHERS
 RIM ELEVATIONS TO DESIGN, STREETS NOT CONSTRUCTED.

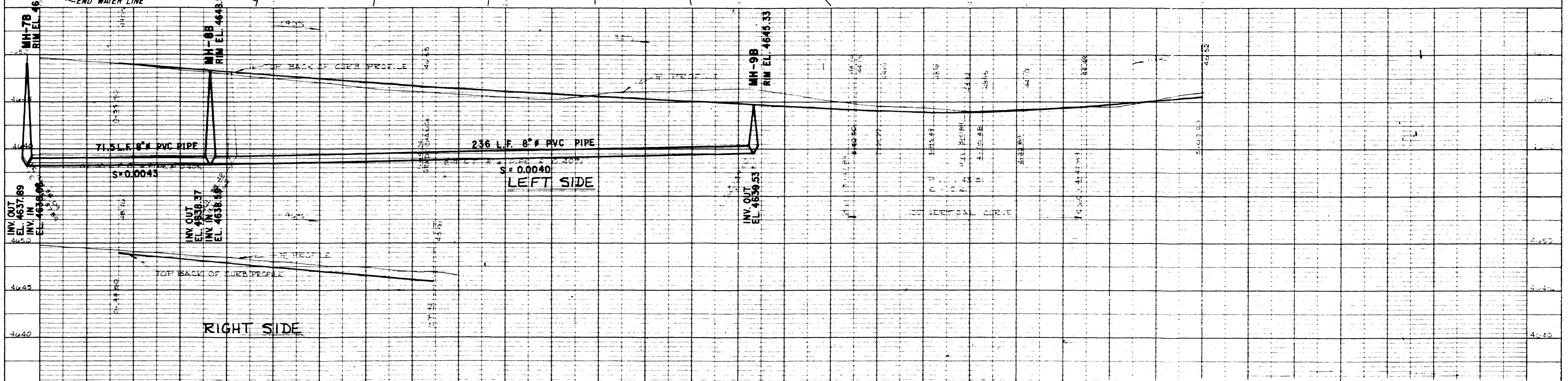
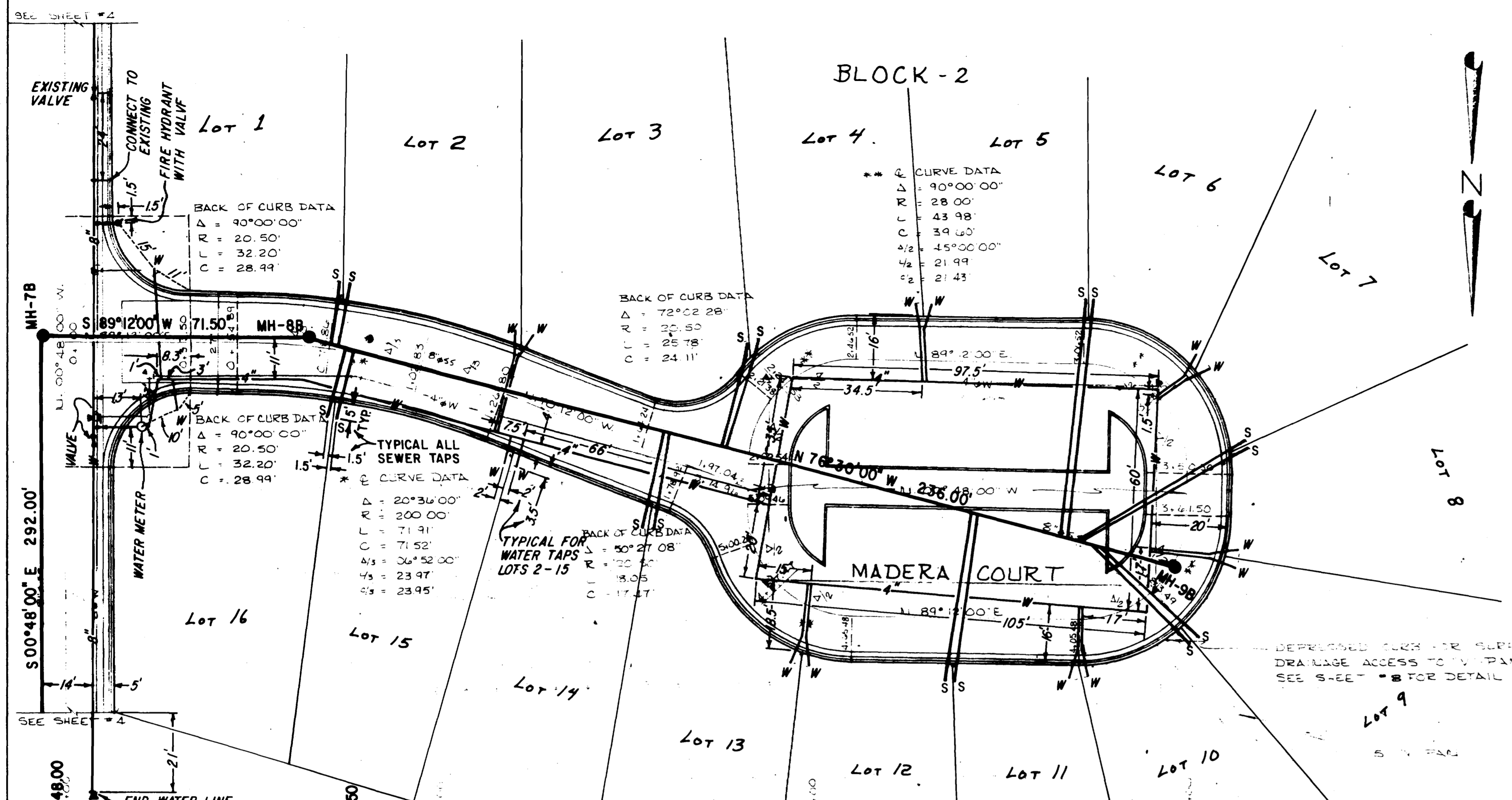
MH 7B (Sewer STATION 14+64.41)

MH 8B (Sewer STATION 15+35.91)

SEWER TAPS

LOT	STATION	LOT	STATION
Lot 1	15+39.91	Lot 9	17+51.91
Lot 2	15+41.91	Lot 10	17+49.91
Lot 3	16+51.91	Lot 11	17+17.91
Lot 4	16+52.91	Lot 12	17+15.91
Lot 5	17+35.91	Lot 13	16+37.91
Lot 6	17+37.91	Lot 14	16+35.91
Lot 7	17+44.91	Lot 15	15+43.91
Lot 8	17+45.91	Lot 16	15+41.91

MH 9B (Sewer STATION 17+71.91)



Roger Allen Jones
 12-30-81

DESIGNED BY: R.S.	DATE: 11-51	STATION TO STA.	THE VINEYARD, (TWO)
DRAWN BY: E.S.C.	DATE:	SCALE	
VERT. 1" = 5'-0" HORIZ. 1" = 20'-0"			
COLORADO WEST ENGINEERING CONSULTING CIVIL ENGINEERS 835 COLORADO AVE GRAND JUNCTION, COLO 81501 (303) 248-5112			MADERA COURT
CLIENT: OXFORD AVENUE LTD			JOB NO. 399.3 SHEET 11 of 13



WESTERN ENGINEERS
CONSULTING ENGINEERS AND SURVEYORS
2180 Hwy. 2 & 16, Grand Junction, CO 81501 • 302-242-2000

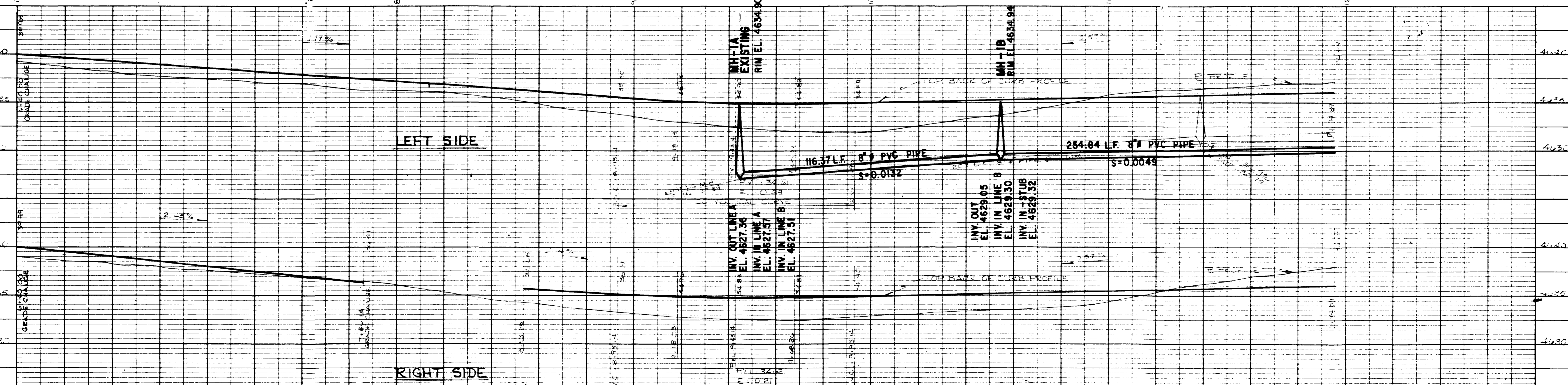
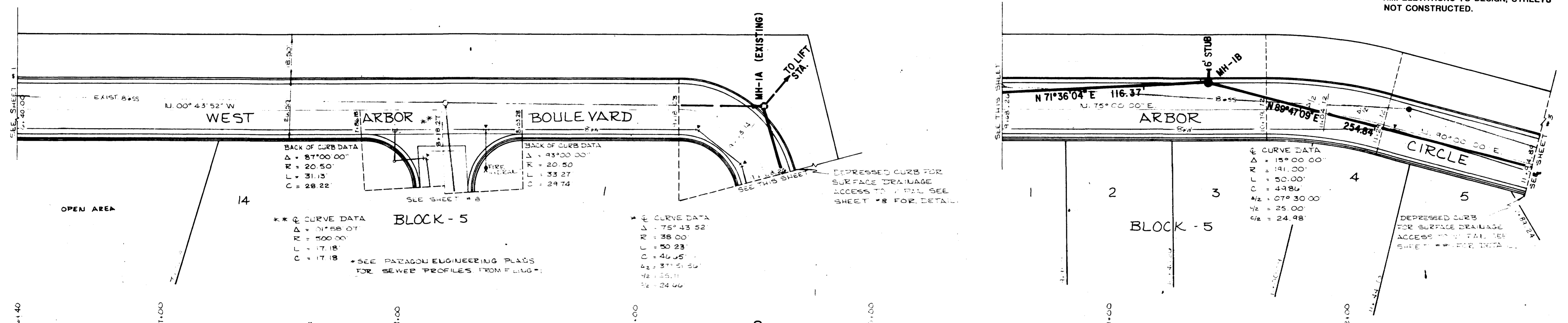
**AS BUILT
SEWER
THE VINEYARD**

DRAWN R.W.O.
NOVEMBER, 1990

NOTE: CONSTRUCTION TESTING AND AS BUILT DRAWINGS BY WESTERN ENGINEERS, INC. CONSTRUCTION STAKING BY M.A.P., INC. DESIGN BY OTHERS RIM ELEVATIONS TO DESIGN, STREETS NOT CONSTRUCTED.

SUMMARY
LINE TESTING

MH to MH	Test Type	Min. Requirement	Results
MH-1A to MH-1B	Air	1.4 Minutes	2.0 Minutes - No Loss
MH-1B to MH-2B	Air	3.1 Minutes	4.0 Minutes - No Loss
MH-2B to MH-3B	Air	3.1 Minutes	4.0 Minutes - No Loss
MH-3B to MH-4B	Air	0.96 Minutes	2.5 Minutes - No Loss
MH-4B to MH-5B	Air	1.5 Minutes	2.0 Minutes - No Loss
MH-5B to MH-6B	Water	3.6 Gals. Loss Max.	3.413 Gals. of Loss
MH-6B to MH-7B	Air	3.5 Minutes	5 Minutes - No Loss
MH-7B to MH-8B	Air	0.78 Minutes	4 Minutes - No Loss
MH-8B to MH-9B	Air	3.0 Minutes	5 Minutes - No Loss

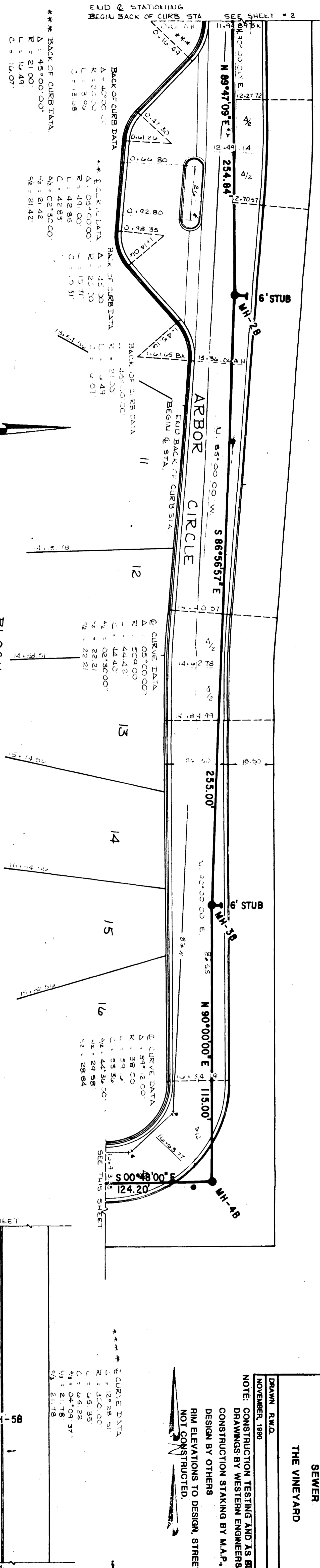


Roger Allen Ferry

12-30-81

DESIGNED BY: RJS	DATE: 11-81	STATION: TO STA.	THE VINEYARD, (TWO) WEST ARBOR BOULEVARD & ARBOR CIRCLE
DRAWN BY: BSC/JEC	DATE:	SCALE: VERT. "1" = "10" HORIZ. "1" = "20" = "1"	
COLORADO WEST CONSULTING CIVIL ENGINEERS 835 COLORADO AVE. GRAND JUNCTION, CO 81501 (303) 245-5112 ENGINEERING			CLIENT: OXFORD AVENUE LTD JOB NO. 399.3 SHEET 2 of 15

* BACK OF CURB DATA
 $\Delta = 180.0000^\circ$
 $R = 4.00'$
 $L = 12.57'$
 $C = 8.00'$

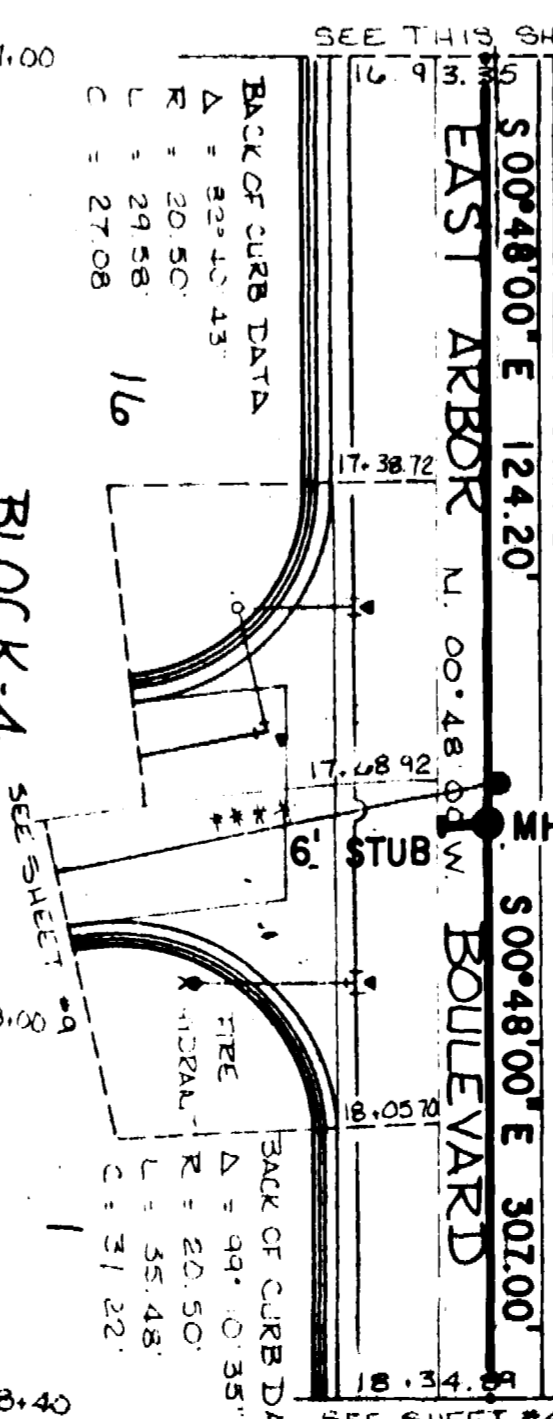


*** BACK OF CURB DATA ***
 $\Delta = 45.0000^\circ$
 $R = 21.00'$
 $L = 16.49'$
 $C = 16.07'$

*** CURVE DATA ***
 $\Delta = 05.0000^\circ$
 $R = 509.00'$
 $L = 44.42'$
 $C = 44.40'$
 $\Delta = 02.3000^\circ$
 $R = 22.21'$
 $L = 22.21'$
 $C = 22.21'$

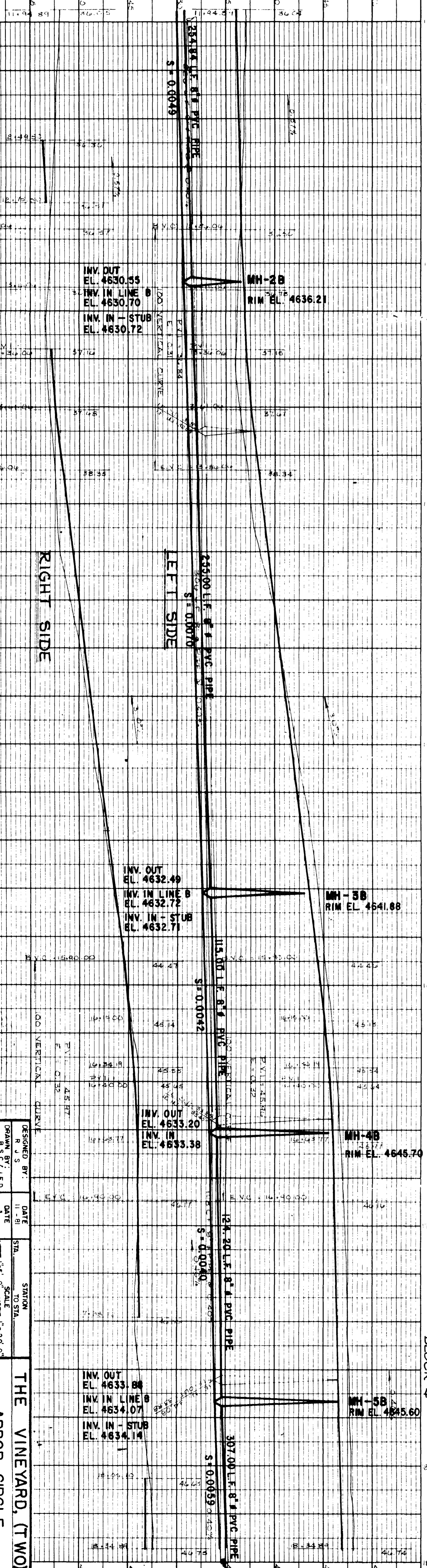
*** CURVE DATA ***
 $\Delta = 89.1200^\circ$
 $R = 38.00'$
 $L = 59.19'$
 $C = 53.56'$
 $\Delta = 44.3400^\circ$
 $R = 44.3400'$
 $L = 29.58'$
 $C = 28.84'$

*** CURVE DATA ***
 $\Delta = 120.5850^\circ$
 $R = 300.00'$
 $L = 95.35'$
 $C = 65.02'$
 $\Delta = 04.0937^\circ$
 $R = 21.78'$
 $L = 21.78'$
 $C = 21.78'$



*** BACK OF CURB DATA ***
 $\Delta = 82.4043^\circ$
 $R = 20.50'$
 $L = 29.58'$
 $C = 27.08'$

*** BACK OF CURB DATA ***
 $\Delta = 94.0351^\circ$
 $R = 20.50'$
 $L = 29.58'$
 $C = 27.08'$



*** BACK OF CURB DATA ***
 $\Delta = 45.0000^\circ$
 $R = 21.00'$
 $L = 16.49'$
 $C = 16.07'$

*** CURVE DATA ***
 $\Delta = 05.0000^\circ$
 $R = 509.00'$
 $L = 44.42'$
 $C = 44.40'$
 $\Delta = 02.3000^\circ$
 $R = 22.21'$
 $L = 22.21'$
 $C = 22.21'$

*** CURVE DATA ***
 $\Delta = 89.1200^\circ$
 $R = 38.00'$
 $L = 59.19'$
 $C = 53.56'$
 $\Delta = 44.3400^\circ$
 $R = 44.3400'$
 $L = 29.58'$
 $C = 28.84'$

*** CURVE DATA ***
 $\Delta = 120.5850^\circ$
 $R = 300.00'$
 $L = 95.35'$
 $C = 65.02'$
 $\Delta = 04.0937^\circ$
 $R = 21.78'$
 $L = 21.78'$
 $C = 21.78'$

*** BACK OF CURB DATA ***
 $\Delta = 82.4043^\circ$
 $R = 20.50'$
 $L = 29.58'$
 $C = 27.08'$

*** BACK OF CURB DATA ***
 $\Delta = 94.0351^\circ$
 $R = 20.50'$
 $L = 29.58'$
 $C = 27.08'$

DESIGNED BY: R.J.S. DATE: 11-81
 DRAWN BY: B.S.C./J.E.D. DATE: 11-81
 SCALE: VERT. 1" = 5'-0" HORIZ. 1" = 20'-0"

STATION TO STA. SCALE

THE VINEYARD, (TWO)
 ARBOR CIRCLE
 EAST ARBOR BOULEVARD

WEST ARBOR BOULEVARD

ENGINEERING

CONSULTING CIVIL ENGINEERS
 835 COLORADO AVE. GRAND JUNCTION, CO. 81501
 (303) 245-5112

CLIENT: OXFORD AVENUE, LTD.

JOB NO. 399.4 SHEET 5 OF 19

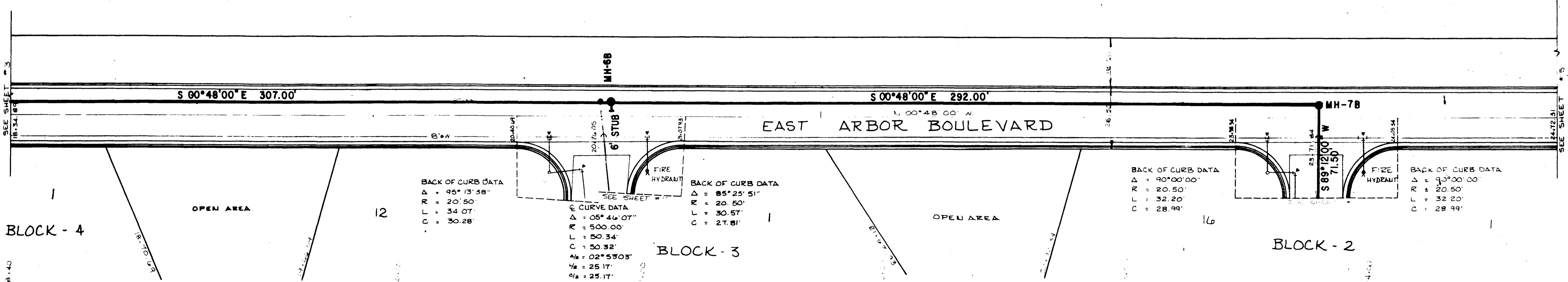
DATE: 12-30-81

02074903.tif

AS BUILT
SEWER
THE VINEYARD

DRAWN R.W.O.
 NOVEMBER, 1990

NOTE: CONSTRUCTION TESTING AND AS BUILT DRAWINGS BY WESTERN ENGINEERS, INC.
 CONSTRUCTION STAKING BY M.A.P., INC.
 DESIGN BY OTHERS
 RIM ELEVATIONS TO DESIGN, STREETS NOT CONSTRUCTED.



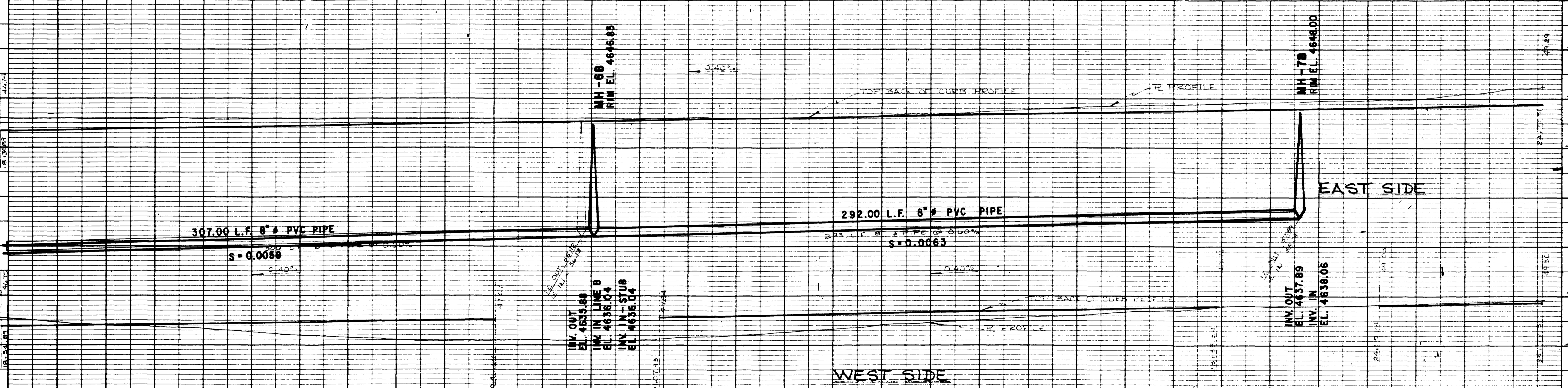
BACK OF CURB DATA
 $\Delta = 95^{\circ}13'38''$
 $R = 20.50'$
 $L = 34.07'$
 $C = 30.28'$

CURVE DATA
 $\Delta = 05^{\circ}46'07''$
 $R = 500.00'$
 $L = 50.34'$
 $C = 50.32'$
 $\frac{1}{4}\Delta = 02^{\circ}53'03''$
 $\frac{1}{4}L = 25.17'$
 $\frac{1}{4}C = 25.17'$

BACK OF CURB DATA
 $\Delta = 85^{\circ}25'51''$
 $R = 20.50'$
 $L = 30.57'$
 $C = 27.81'$

BACK OF CURB DATA
 $\Delta = 90^{\circ}00'00''$
 $R = 20.50'$
 $L = 32.20'$
 $C = 28.99'$

BACK OF CURB DATA
 $\Delta = 95^{\circ}00'00''$
 $R = 20.50'$
 $L = 32.20'$
 $C = 28.99'$



INV OUT
 EL. 4655.80
 INV IN LINE B
 EL. 4638.04
 INV IN - STUB
 EL. 4638.04

INV OUT
 EL. 4637.89
 INV IN
 EL. 4638.06

DESIGNED BY: R J S	DATE 11-81	STATION TO STA.
DRAWN BY: B S C	DATE	SCALE VERT. 1" = 5'-0" HORIZ. 1" = 20'-0"
COLORADO WEST ENGINEERING CONSULTING CIVIL ENGINEERS 835 COLORADO AVE. GRAND JUNCTION, COLO 81501 (303) 245-5112		

THE VINEYARD. (TWO) EAST ARBOR BOULEVARD	
CLIENT: OXFORD AVENUE LTD.	JOB NO. 3393 SHEET 4 of 13

Robert J. Collins
 12-30-81