

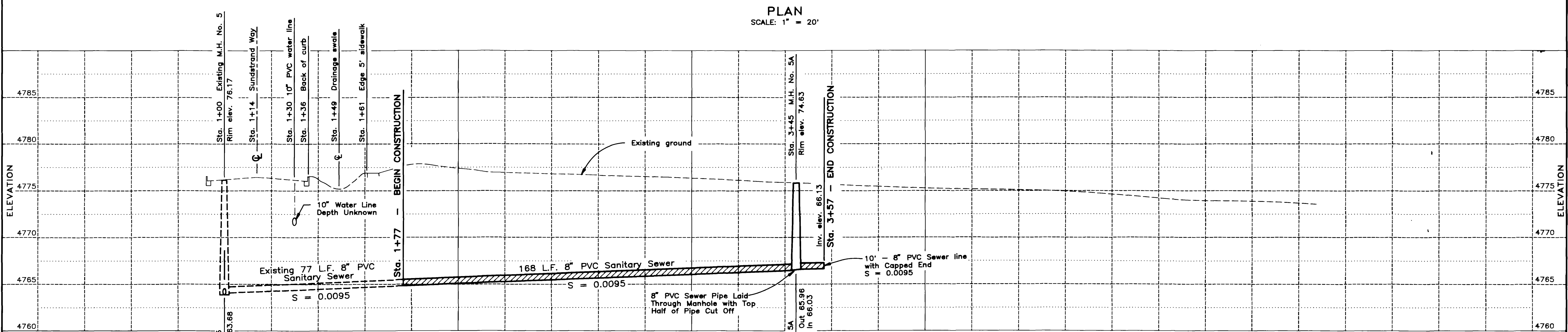
- NOTES:**
- All construction shall conform and adhere to the City of Grand Junction, Department of Public Works and Utilities, Engineering Section, "Standard Specifications for Construction of Water Lines, Sanitary Sewers, Storm Drainage, and Irrigation Systems", "Detailed Street Construction Specifications" and "Standard Details."
 - Manhole and sewer construction shall conform to the above Standard Specifications and Details.
 - Compaction shall meet or exceed to the above Standard Specifications and Details.

UTILITY LOCATIONS
 Utility locations are approximate as provided by utility company location plans. Verify and field locate prior to any excavation, grading, or drilling. Utility Notification Center must be called two business days in advance, 1-800-922-1987.

- LEGEND**
- Property Line
 - ⊕_{FH} Fire Hydrant
 - ⊕_W Water Valve
 - ⊙_{MH} Manhole
 - ⊙_{LP} Light Pole

SUMMARY LINE TESTING

MH to MH	Test Type	Min. Requirement	Results
5 5A	Air	3 Minutes	5 Minutes - No Loss



AS BUILT

WESTERN CONSULTING ENGINEERS / LAND SURVEYORS
 ENGINEERS, INC. 1120 Hwy 4 & 1/2 St. Grand Junction, CO (970)248-2288

SANITARY SEWER PLAN AND PROFILE FOR
EMPIRE DEVELOPEMENT CO.
OF THE B.L.M. OFFICE - WAREHOUSE
2815 - H ROAD
T1N, R1W OF THE UTE P.M.
GRAND JUNCTION, MESA COUNTY, COLORADO

SURVEYED	R.A.M.	DRAWN	LRG	CHECKED	L.R.G.
DATE	5-2-91	WEI DWG. NO.	2934-1144-03		

REVISED: 12/27/91