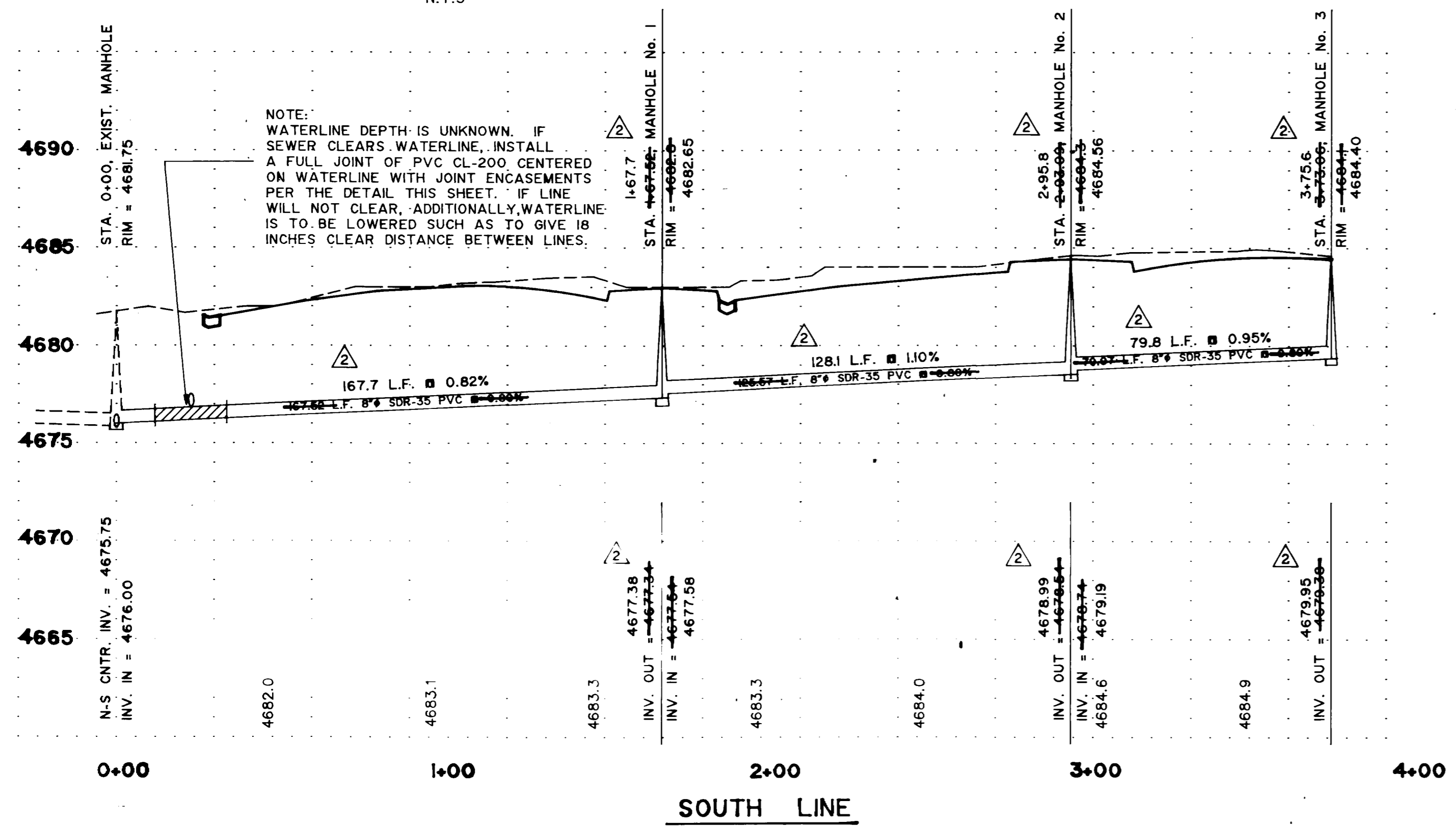
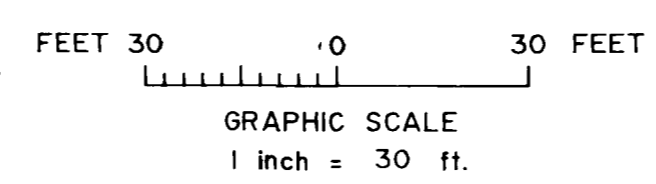
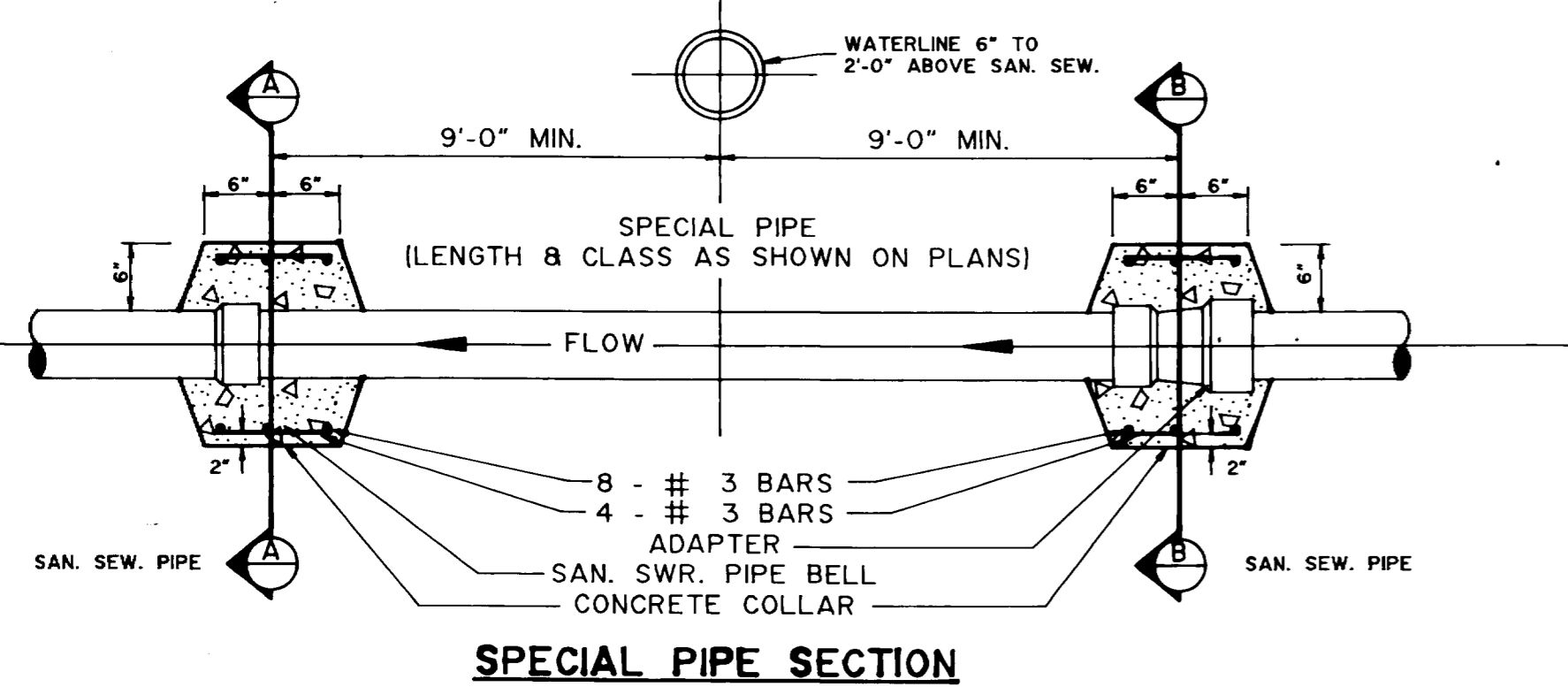
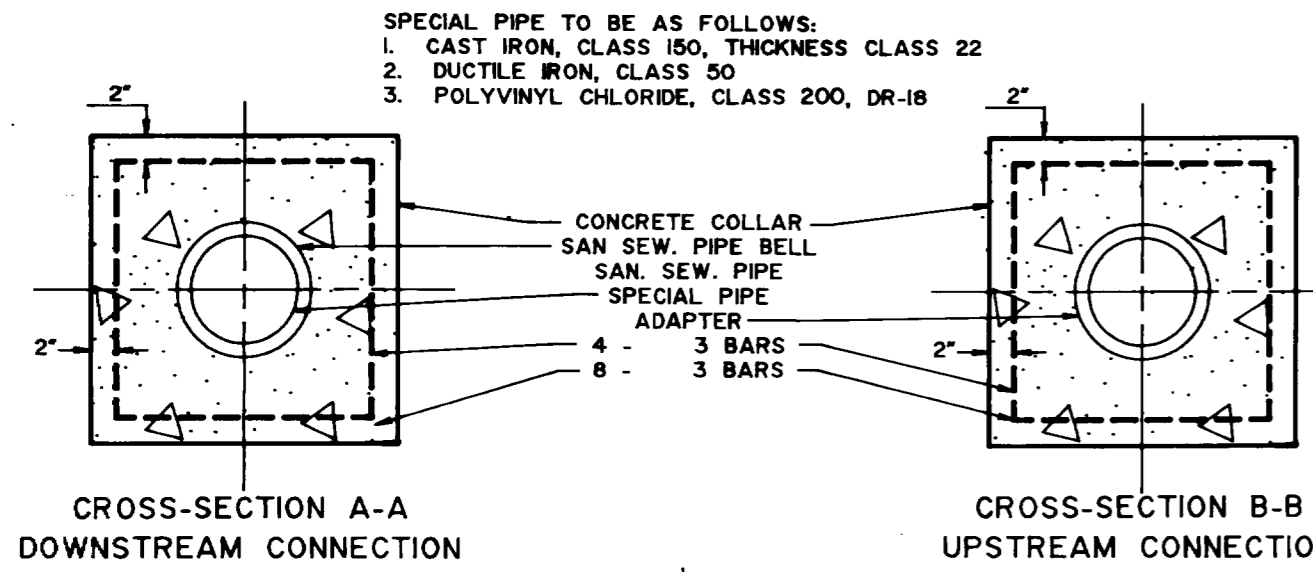


ENGINEER CERTIFICATE:
 THIS IS TO CERTIFY THAT BANNER ASSOCIATES, INC. HAS REVIEWED THE CONSTRUCTION OF THE SANITARY SEWERLINE FOR THE INDIAN WASH SUBDIVISION AND TO THE BEST OF OUR KNOWLEDGE AND BELIEF IT HAS BEEN CONSTRUCTED IN ACCORDANCE WITH THE CENTRAL GRAND VALLEY SANITATION DISTRICT STANDARDS AND SPECIFICATIONS AND HAVE MET ALL TESTING REQUIREMENTS.



WATERLINE COURSES

①	S 80° 32' 27" E	101.56'
②	N 55° 12' 32" E	43.00'
③	N 10° 57' 33" E	42.23'
④	N 33° 17' 27" W	44.43'
⑤	S 77° 30' 00" E	97.82'

SEWERLINE COURSES

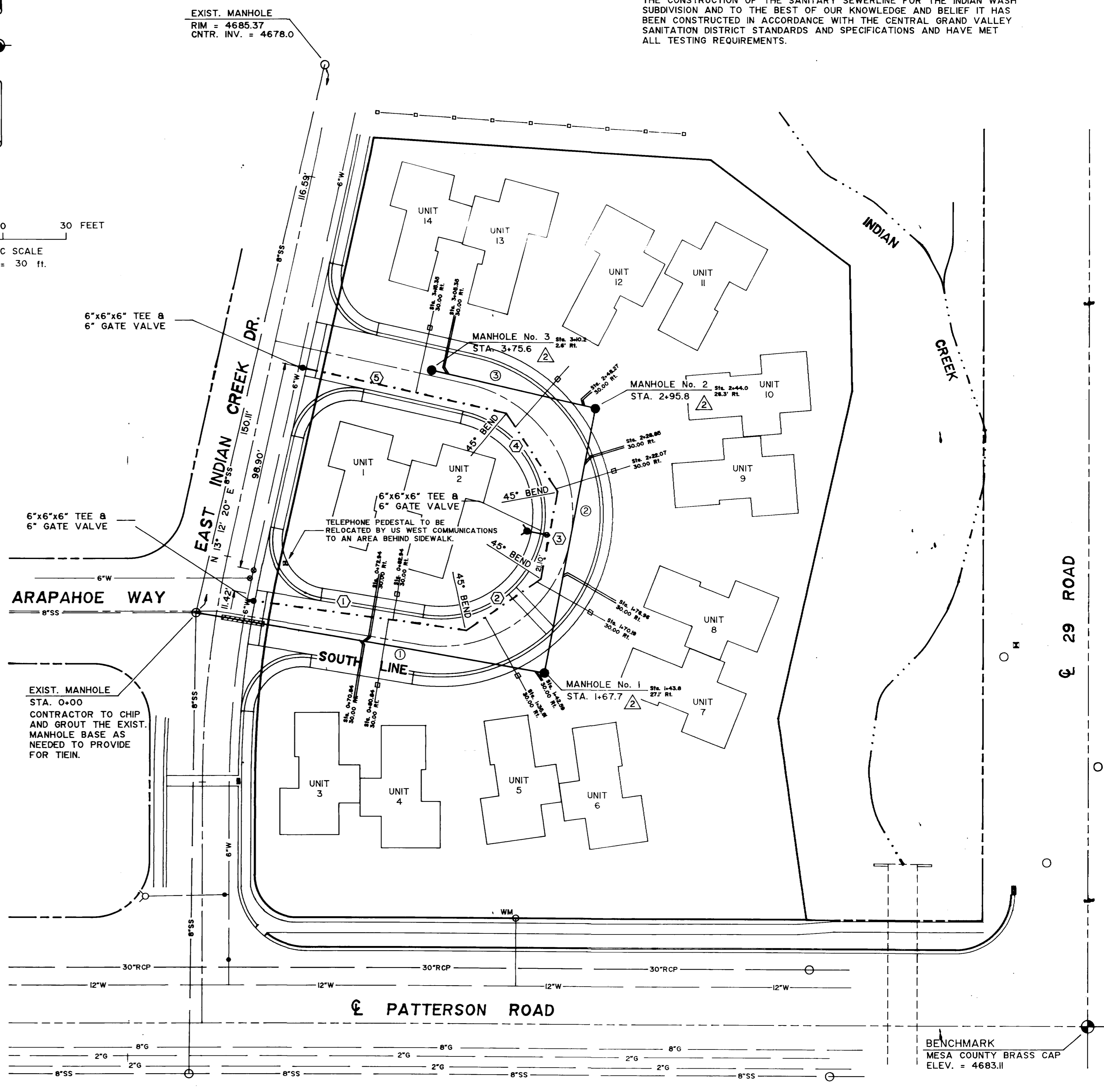
①	S 80° 13' 30" E	167.7'
②	N 10° 53' 00" E	128.1'
③	N 77° 11' 50" W	79.8'

NOTE:
 SEE SHEETS 7 AND 8 FOR STANDARD DETAILS FOR WATERLINE AND SEWERLINE CONSTRUCTION.

EACH WATER SERVICE IS TO SERVE TWO CONDOMINIUM UNITS AND IS TO BE CONSTRUCTED OF 1" TYPE 'K' COPPER.

~~EACH SEWER SERVICE IS TO SERVE TWO CONDOMINIUM UNITS AND IS TO BE CONSTRUCTED OF 6" SDR-35 PVC.~~

ALL SERVICES ARE TO BE CONSTRUCTED RADIALLY OR PERPENDICULAR TO CENTERLINE AT THE ROADWAY STATIONING GIVEN.



CONSTRUCTION DRAWING OF RECORD

DRAWN BY: DEC	REVIEWED _____ DATE: _____ FOR _____
CHECKED BY: DEC	REVIEWED _____ DATE: _____ FOR BANNER ASSOCIATES, INC.



American Consulting Engineers Council Member

BANNER
 BANNER ASSOCIATES, INC. • CONSULTING ENGINEERS & ARCHITECTS
 2777 CROSSROADS BOULEVARD • GRAND JUNCTION, CO 81506 • (303) 243-2242
 605 E. MAIN • SUITE 6 • ASPEN, CO 81611 • (303) 925-8867

REVISION	DATE	DESCRIPTION	BY	CHKD
1	7-08-91	REVISED FOR JULY 3, 1991 COMMENTS	F.J.K.	J.E.L.
2	9-05-91	REVISE AS CONSTRUCTION DRAWING OF RECORD.	DEC	DEC
3	9-13-91	SHOW SEWER SERVICES AS TWO(2) - 4" Ø SERVICES.	DEC	DEC

JOEL FENNERN

INDIAN WASH SUBDIVISION
 UTILITY COMPOSITE AND
 SANITARY SEWER PROFILES

GRAND JUNCTION, COLO.

SCALE: Horz: 1"=30' Vert: 1"=5'	Project No: 8241
DATE: 9-05-91	SHEET NO: 1 of 1