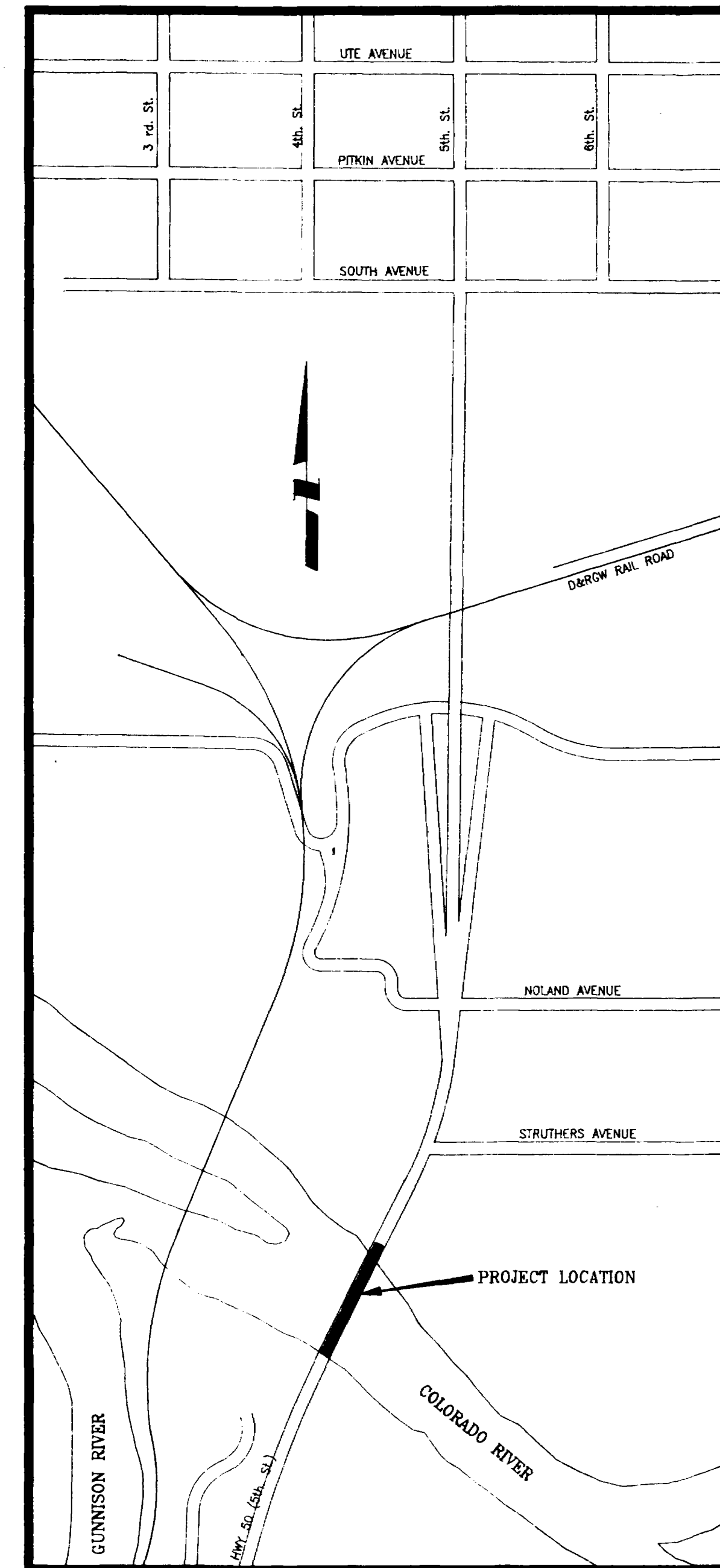


5TH. ST. SEWERLINE REPLACEMENT 1990

SEWER PIPE LINING

1. Cover Sheet
2. Drafting Standards
- 3.-4. 5TH. Street, Plan & Profile
5. Standard Water Line Details (W-1)

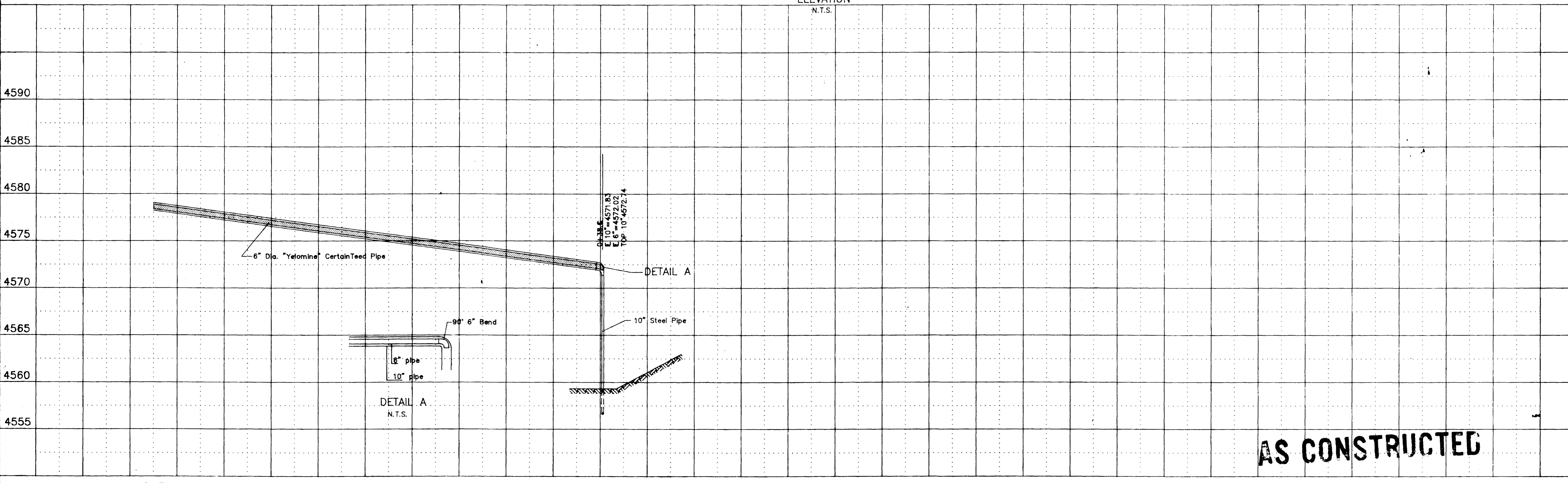
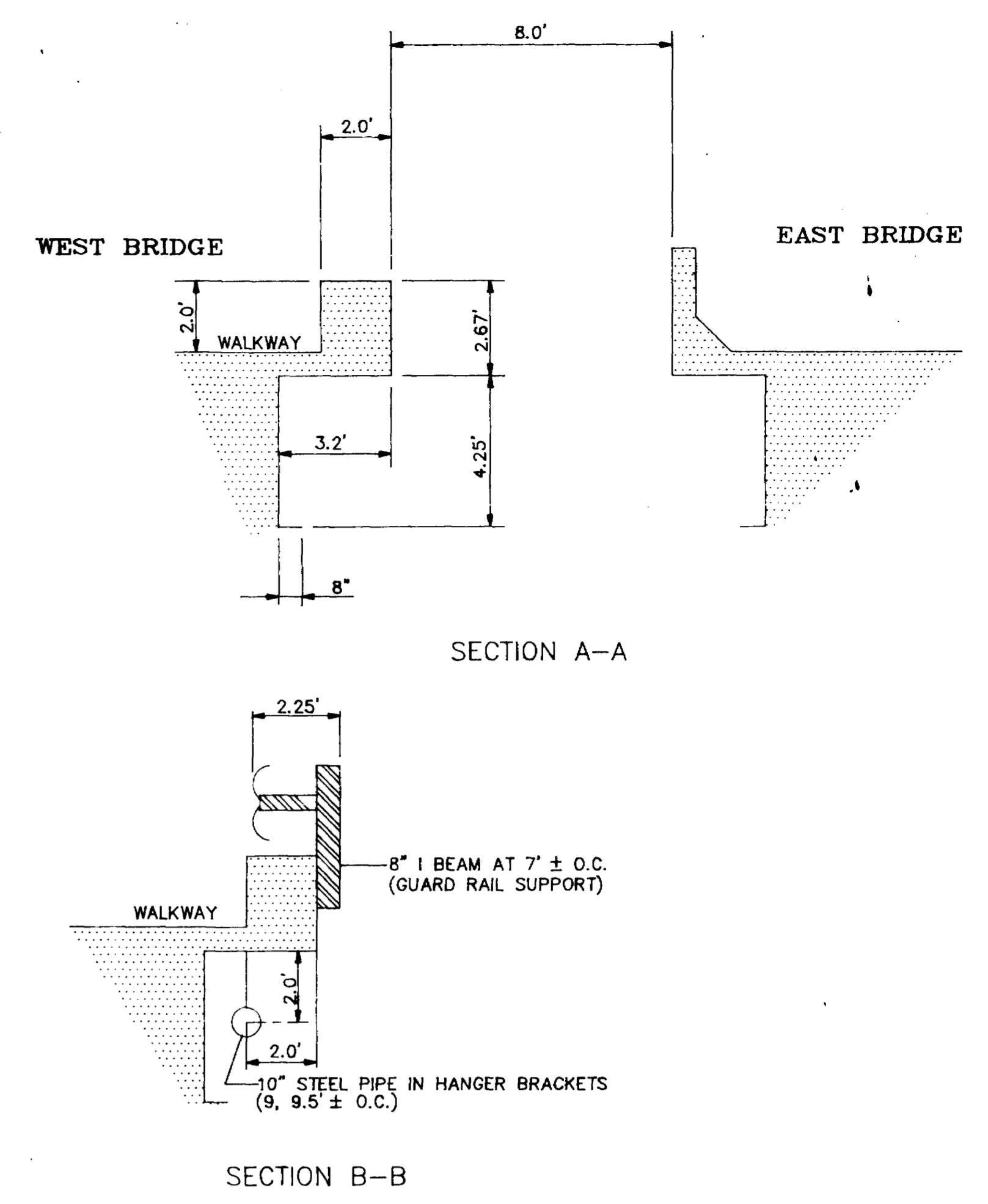
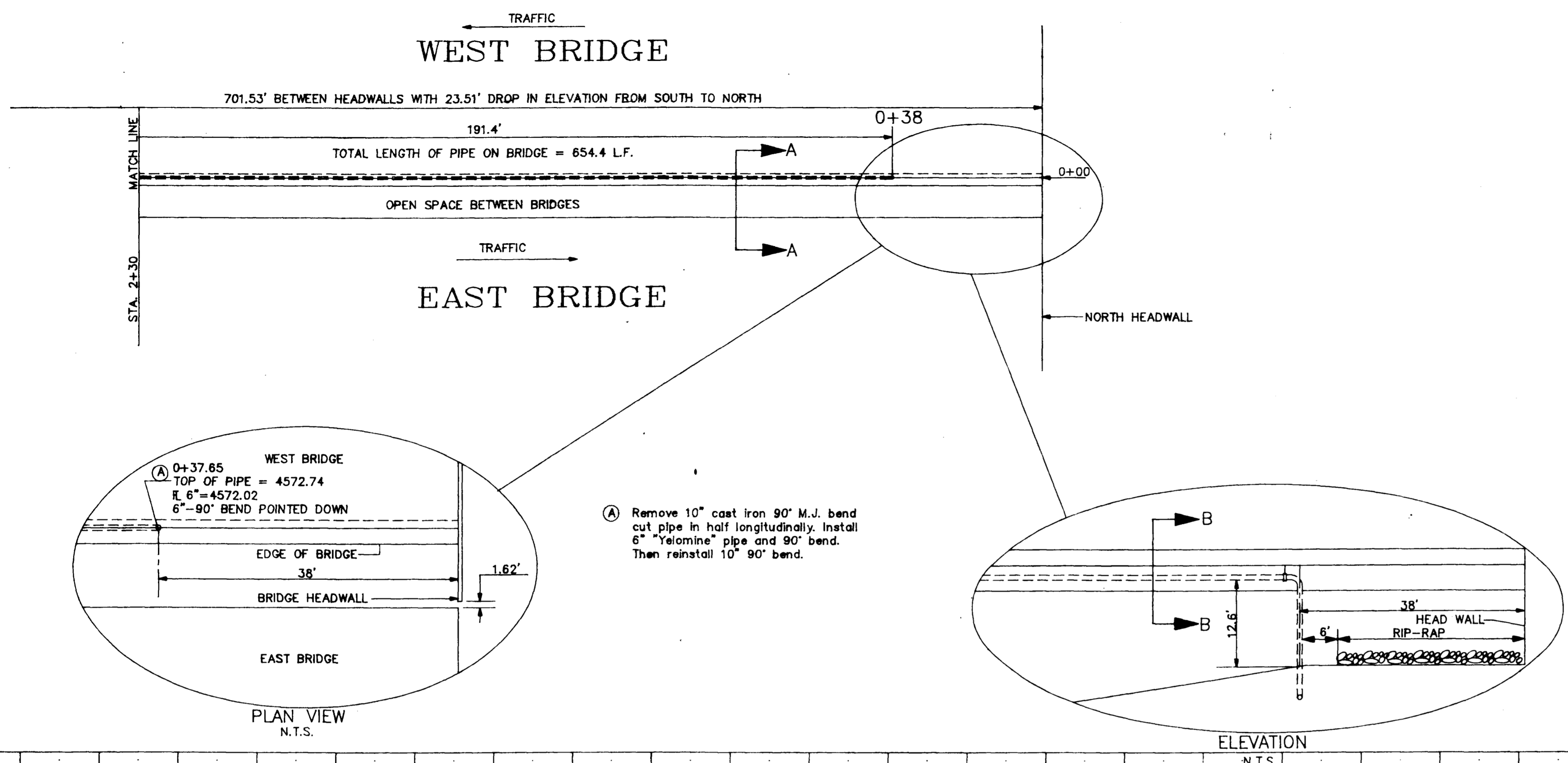


Vicinity Map

City of Grand Junction, Colorado
Department of Public Works & Utilities

AS CONSTRUCTED

Engineering Division



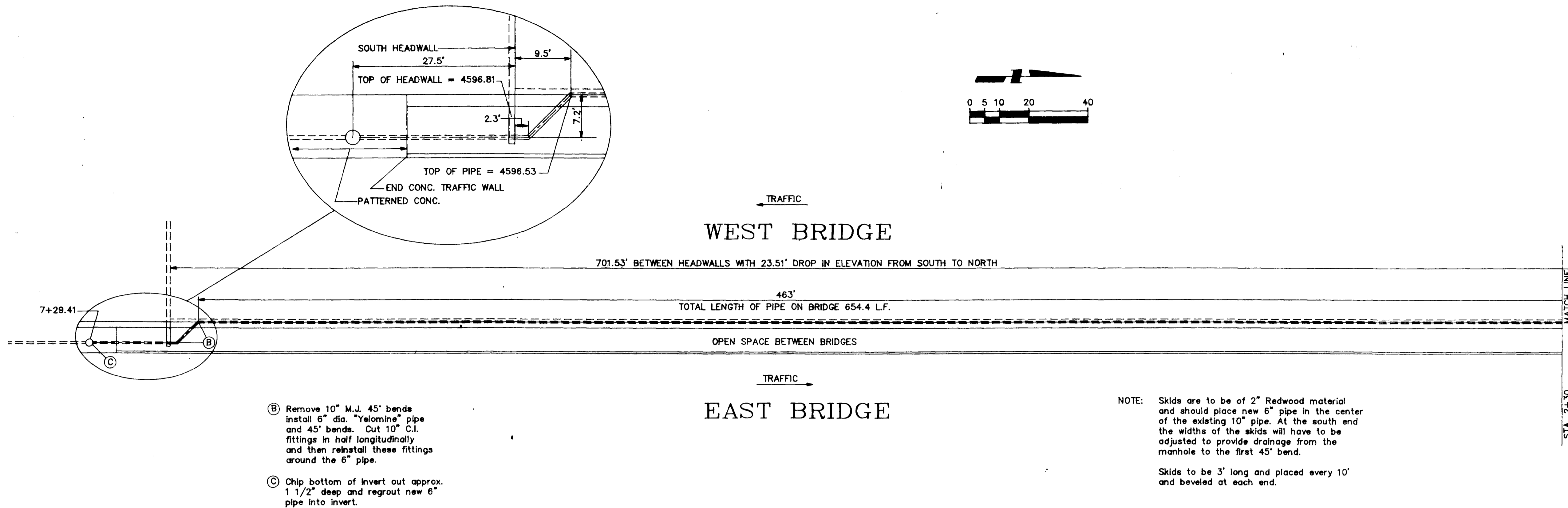
AS CONSTRUCTED

DESCRIPTION	DATE	DRAWN BY	L. MARTIN	DATE	11/90
REVISION		CHECKED BY	<i>Leidy</i>	DATE	11/21/90
REVISION		APPROVED BY		DATE	
REVISION		FIELD BOOK NO.		PAGE	

DEPARTMENT OF PUBLIC WORKS AND UTILITIES
ENGINEERING DIVISION
CITY OF GRAND JUNCTION, COLORADO

5th. ST. SEWERLINE REPLACEMENT, 1990
SEWER PIPE LINING
Plan & Profile

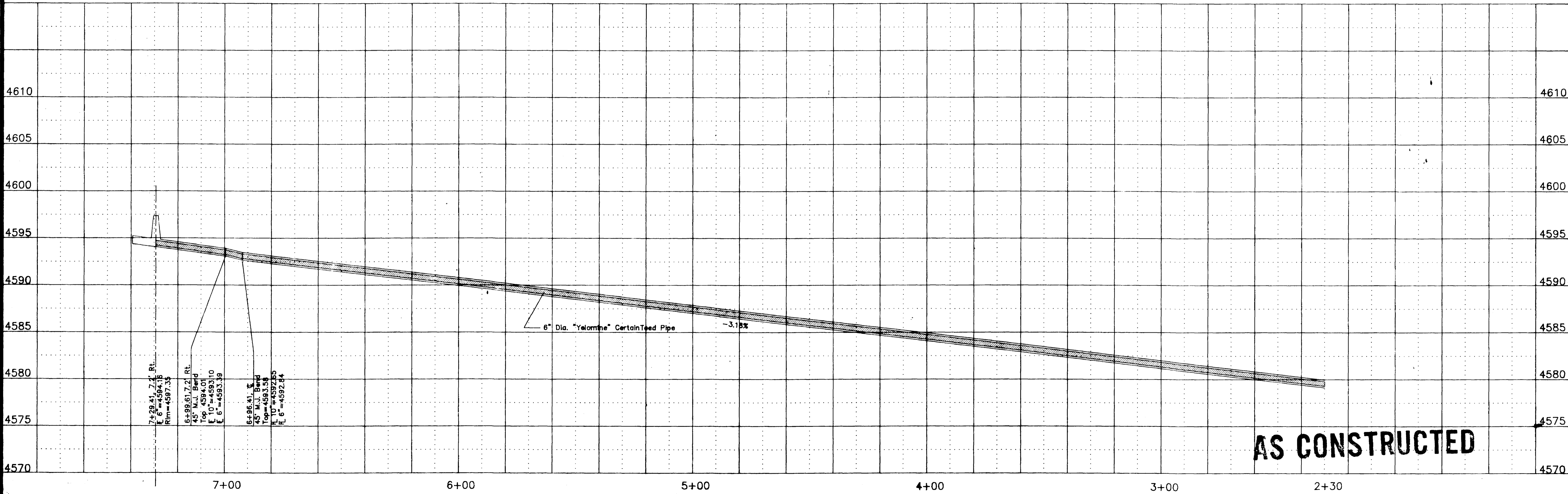
SHEET NO.	3
OF	5
FILE NO.	99009-1



- (B) Remove 10" M.J. 45' bends install 6" dia. "Yelomine" pipe and 45' bends. Cut 10" C.I. fittings in half longitudinally and then reinstall these fittings around the 6" pipe.
- (C) Chip bottom of invert out approx. 1 1/2" deep and regrout new 6" pipe into invert.

NOTE: Skids are to be of 2" Redwood material and should place new 6" pipe in the center of the existing 10" pipe. At the south end the widths of the skids will have to be adjusted to provide drainage from the manhole to the first 45' bend.

Skids to be 3' long and placed every 10' and beveled at each end.



AS CONSTRUCTED

DESCRIPTION	DATE	DRAWN BY	L. MARTIN	DATE	11/99
REVISION		CHECKED BY	Leahy	DATE	11/1999
REVISION		APPROVED BY		DATE	
REVISION		FIELD BOOK NO.		PAGE	

DEPARTMENT OF PUBLIC WORKS AND UTILITIES
ENGINEERING DIVISION
CITY OF GRAND JUNCTION, COLORADO

5th. ST. SEWERLINE REPLACEMENT 1990	SHEET NO. 4
SEWER PIPE LINING	OF 5
Plan & Profile	FILE NO. 99009