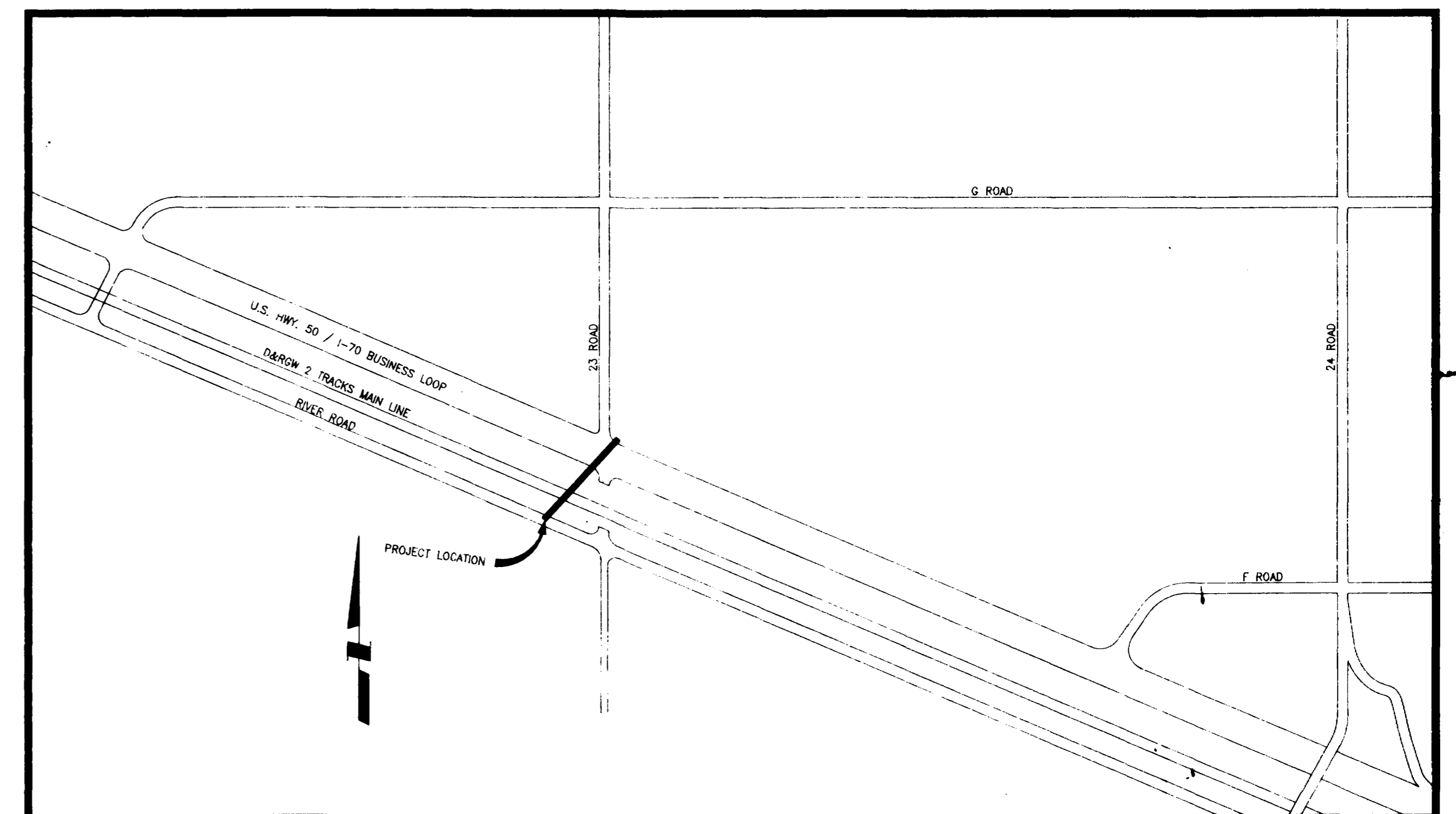


# SEWER EXTENSION 1990

## 23 ROAD AT HIGHWAY 6&50

1. Cover Sheet
2. Drafting Standards
3. Summary of Approximate Quantities
4. 23 Road Extension Plan & Profile
5. Standard Sanitary Sewer Details (SS-1)
6. Standard Waterline Details (W-1)

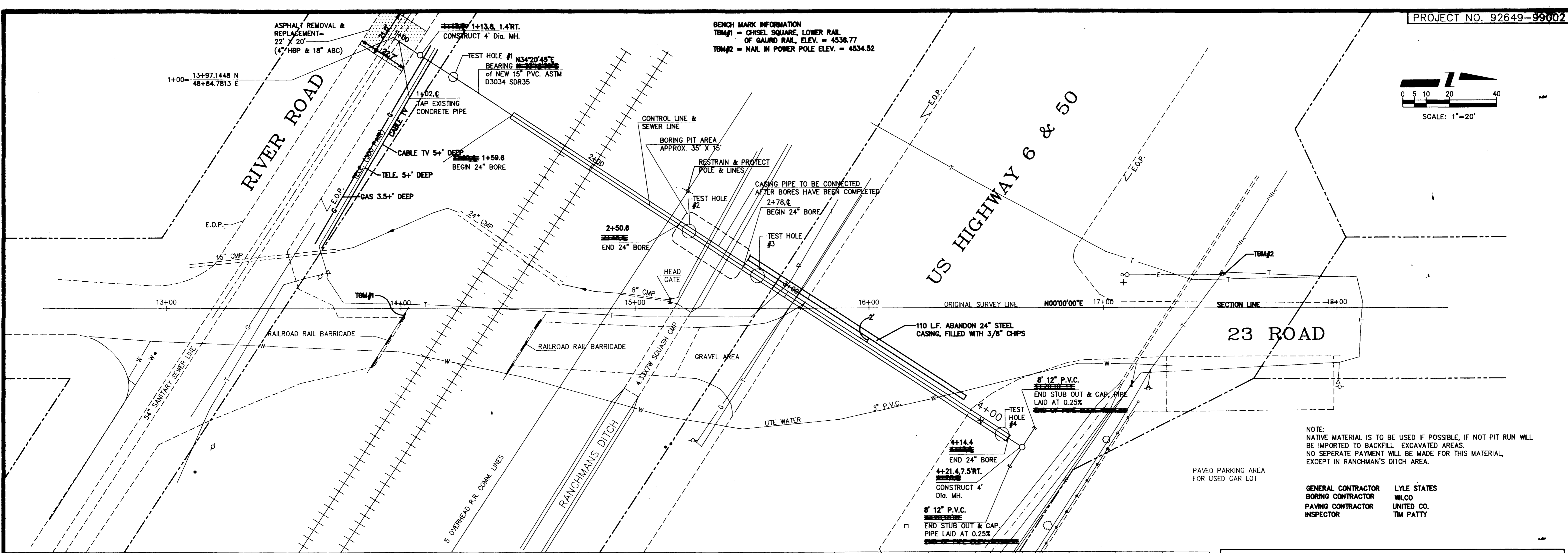
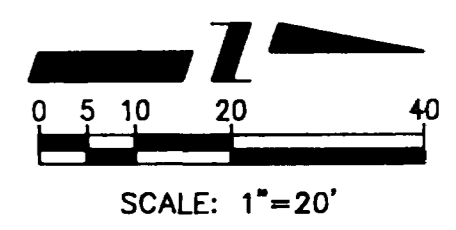


Vicinity Map

*City of Grand Junction, Colorado*  
*Department of Public Works & Utilities*                      *Engineering Division*

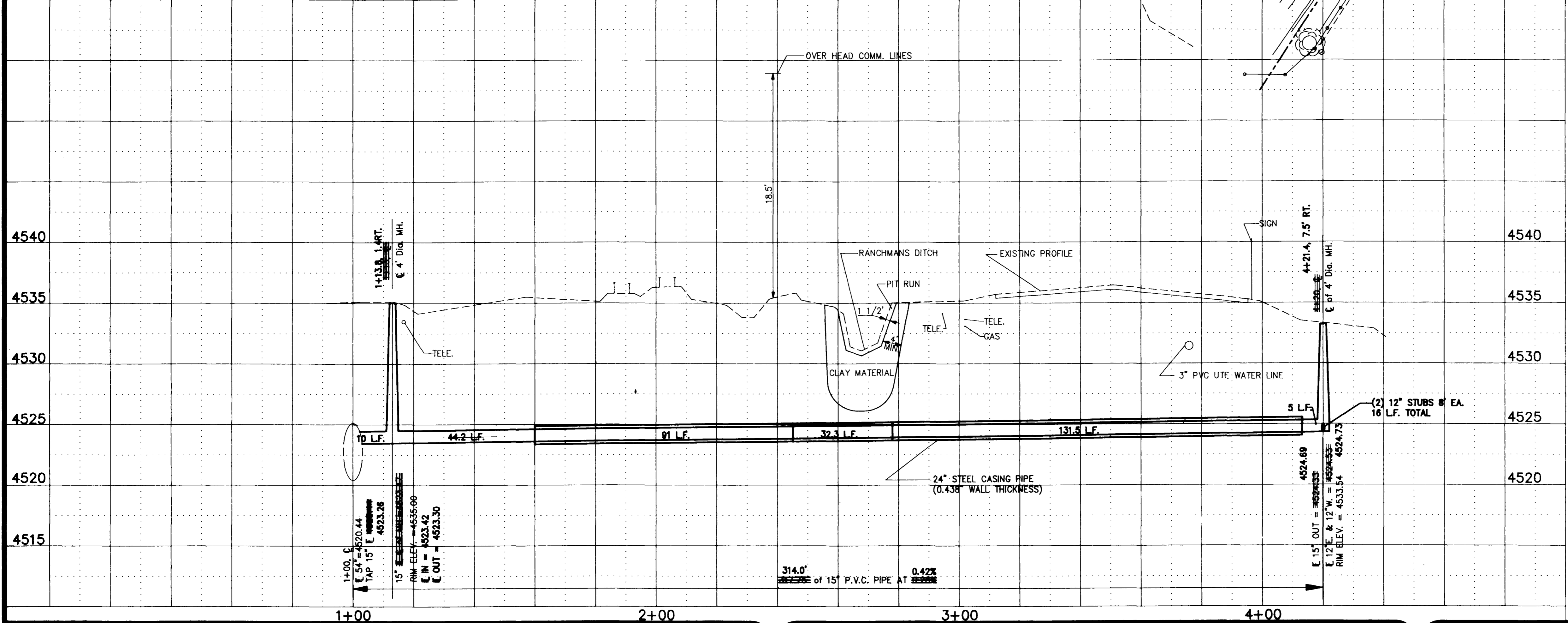
# SUMMARY OF APPROXIMATE QUANTITIES

Item No.	Ref. No.	Contract Item	Unit	Quantity	Item No.	Ref. No.	Contract Item	Unit	Quantity
1.		Cut & Remove Asphalt	S.Y.	50					
2.		Furnish & Install 15" Sewer Pipe ASTM D3034 SDR 35. Including Excavation, Backfill & Backfill Material (Pit Run)	L.F.	65					
3.		Furnish & Install 15" Sewer Pipe ASTM D3034 SDR 35. Through Casing Pipe.	L.F.	255					
4.		Furnish & Install 24" Dia. Casing Pipe (0.438" Wall Thickness) By Boring and Jacking	L.F.	220					
5.		Furnish & Install 24" Dia. Casing Pipe (0.438" Wall Thickness) In Boring Pit after Bores are Completed	L.F.	35					
6.		15" Dia. Tap in 54" Dia. Concrete Pipe including Saw Cutting and Sealing	Each	1					
7.		Furnish & Install Standard 4' Dia. Manhole (>8' Deep) Including Ring & Cover	Each	1					
8.		Furnish & Install Standard 4' Dia. Manhole (>11' Deep) Including Ring & Cover	Each	1					
9.		Furnish & Install 12" Sewer Pipe ASTM D3034 SDR 35 Including Excavation, Backfill & Backfill Material	L.F.	15					
10.		Aggregate Base Course Class 6 (18" Thick) (Haul, Water & Compact)	S.Y.	50					
11.		Hot Bituminous Pavement Grading E (4" Thick, 2 Lifts) (Haul, Asphalt & Compact)	S.Y.	50					
12.		Mobilization	Lump Sum	1					
13.		Traffic Control	Lump Sum	1					
14.		Informational Newsletter (approx. 30 copies per week)	Weeks	6					
15.		Granular Stabilization Material, Including Over-Excavation Where Authorized	Tons	300					
16.		Backfill of Ranchman's Ditch	Lump Sum	1					
17.		Construction Staking	Lump Sum	1					
18.		Project Signs	Each	2					



NOTE:  
NATIVE MATERIAL IS TO BE USED IF POSSIBLE, IF NOT PIT RUN WILL BE IMPORTED TO BACKFILL EXCAVATED AREAS. NO SEPERATE PAYMENT WILL BE MADE FOR THIS MATERIAL, EXCEPT IN RANCHMAN'S DITCH AREA.

GENERAL CONTRACTOR LYLE STATES  
BORING CONTRACTOR WILCO  
PAVING CONTRACTOR UNITED CO.  
INSPECTOR TIM PATTY



SUMMARY OF QUANTITIES			
CONT. ITEM NO.	CONTRACT ITEM	AS BUILT QUANTITY	APPROXIMATE PLAN QUANTITY
1	CUT AND REMOVE ASPHALT	53.0 SY.	50.0 SY.
2	FURNISH AND INSTALL 15" P.V.C.	59.2 LF.	85.0 LF.
3	FURNISH AND INSTALL 15" THROUGH CASING PIPE	254.8 LF	255.0 LF.
4	FURNISH AND INSTALL 24" CASING PIPE ( BY BORING	222.5 LF	220.0 LF
5	FURNISH AND INSTALL 24" CASING PIPE (IN BORING PIT	32.5 LF.	35 LF.
6	15" DIA. TAP IN 54" DIA. CONCRETE PIPE	1 EA.	1 EA.
7	FURNISH AND INSTALL 4" DIA. MANHOLE (> 8' DEEP	1 EA.	1 EA.
8	FURNISH AND INSTALL 4" DIA. MANHOLE (> 11' DEEP	1 EA.	1 EA.
9	FURNISH AND INSTALL 12" P.V.C.	16 LF.	15 LF.
10	BASE COURSE CLASS6 (18" THICK	64.6 SY.	50 SY.
11	ASPHALT (4" THICK, 2 LIFTS	53.0 SY.	50 SY.
12	MOBILIZATION	L.S.	L.S.
13	TRAFFIC CONTROL	L.S.	L.S.
14	NEWS LETTER	0 WEEKS	6 WEEKS
15	STABILIZATION MATERIAL	263.1 TONS	300 TONS
16	BACK FILL OF RANCHMAN'S DITCH	L.S.	L.S.
17	CONSTRUCTION STAKING	L.S.	L.S.
18	PROJECT SIGNS	2 EA.	2 EA.

AS CONSTRUCTED

REVISION	DESCRIPTION	DATE	DRAWN BY	DATE
			L. MARTIN	8/90
			LESLEY	8/90
			JJB	8/90

SCALE	
PLAN	PROFILE
HORIZ. 1"=20'	HORIZ. 1"=20'
	VERT. 1"=5'

DEPARTMENT OF PUBLIC WORKS AND UTILITIES  
ENGINEERING DIVISION  
CITY OF GRAND JUNCTION, COLORADO

SEWER EXTENSIONS 1990  
23 ROAD SEWER EXTENSION  
Plan & Profile

SHEET NO.	
OF	
FILE NO.	92649-XXXX-9902AB