

**SUMMARY OF APPROXIMATE QUANTITIES
SEWER**

ITEM NO.	CONTRACT ITEM DESCRIPTION	UNIT	PLAN QUANTITY	FINAL QUANTITY
1	FURNISH & INSTALL 48" DIA. MANHOLE INCLUDING RING & COVER	EACH	1	1
2	FURNISH & INSTALL 8" PVC SEWER LINE (ASTM 3034 SDR 35)	L.F.	20	N/A
3	FURNISH & INSTALL 4" PVC SEWER LINE (ASTM 3034 SDR 35)	L.F.	71	80
4	SEWER TAPS INCLUDING SADDLES, PIPE, EXCAVATION & BACKFILL	EACH	1	1
5	DUCTILE IRON PIPE (AWWA C-151)	L.F.	20	40
6	FURNISH & INSTALL 4" PVC SEWER CLEANOUT	EACH	1	1
7	CONNECT TO EXISTING MH NO. 42	LS	1	1

LEGEND

MH	MANHOLE
STA	STATION
C	CENTERLINE
EL.	ELEVATION
S.S.	SANITARY SEWER
S	SLOPE
L.F.	LINEAR FEET
W	WATER
B.O.P.	BOTTOM OF PIPE
T.O.P.	TOP OF PIPE
R.O.W.	RIGHT-OF-WAY
LAT.	LATERAL
INV.	INVERT
F	FLOWLINE

TEMPORARY BENCH MARK:
SPIKE IN POWER POLE
75' +/- EAST OF EXISTING
MANHOLE NO. 42
ELEV. = 4546.74

APPROVED FOR CONSTRUCTION

CITY OF GRAND JUNCTION
UTILITY ENGINEER
DATE:

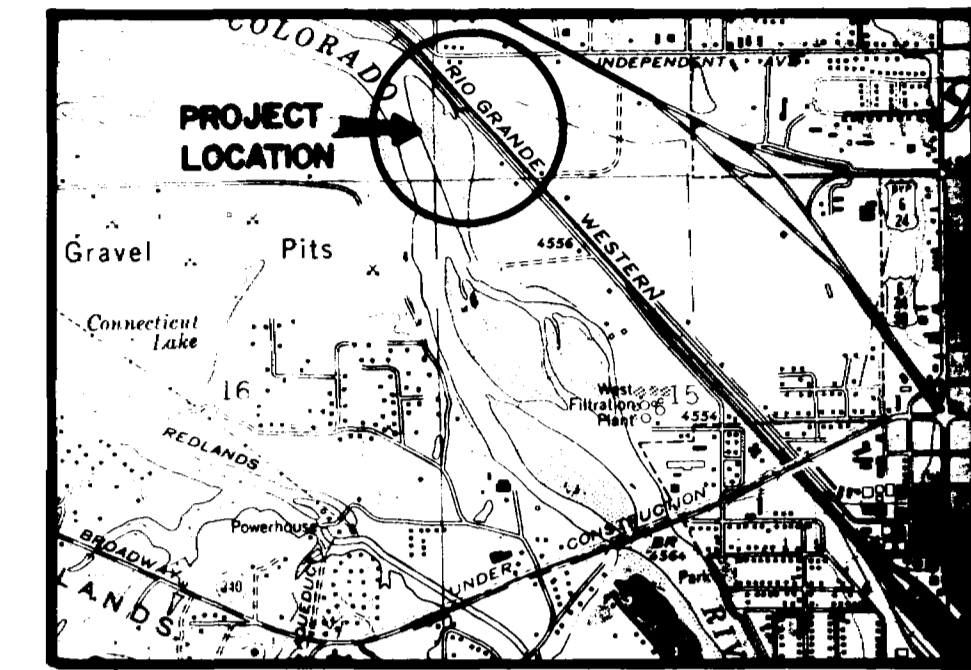
ACCEPTED AS CONSTRUCTED

CITY OF GRAND JUNCTION
UTILITY ENGINEER
DATE:

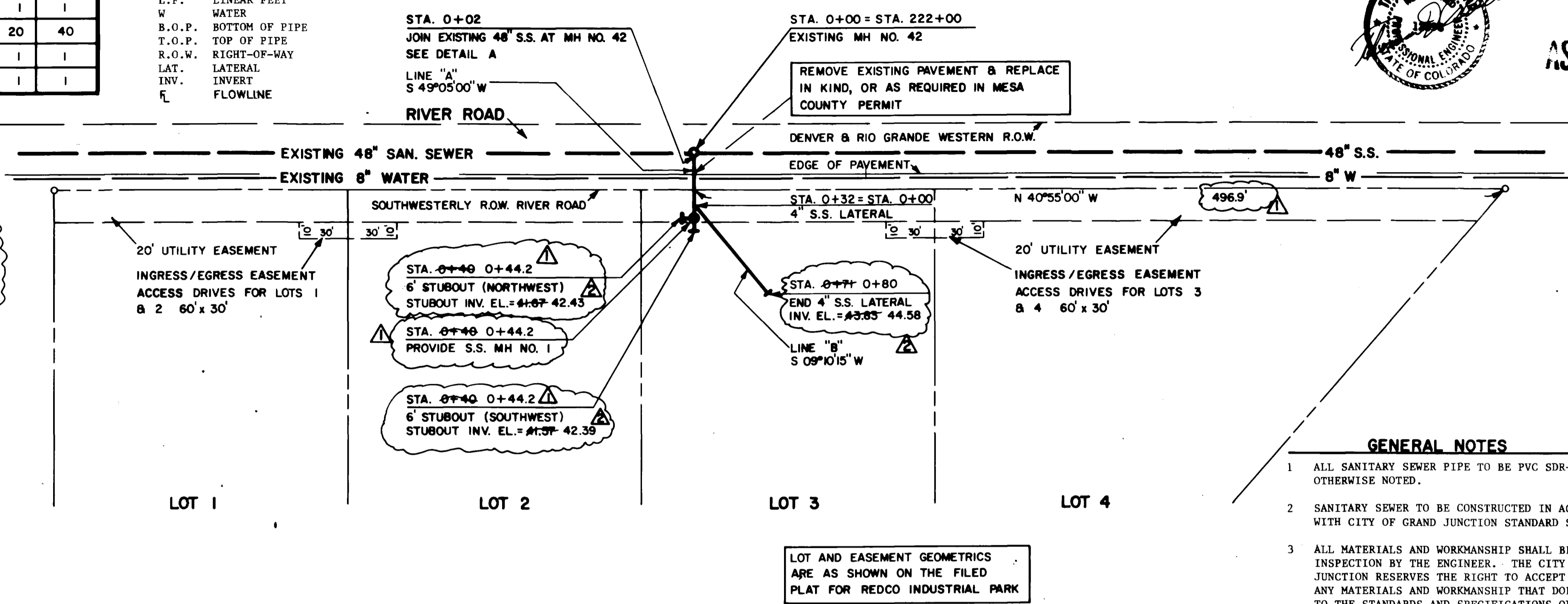
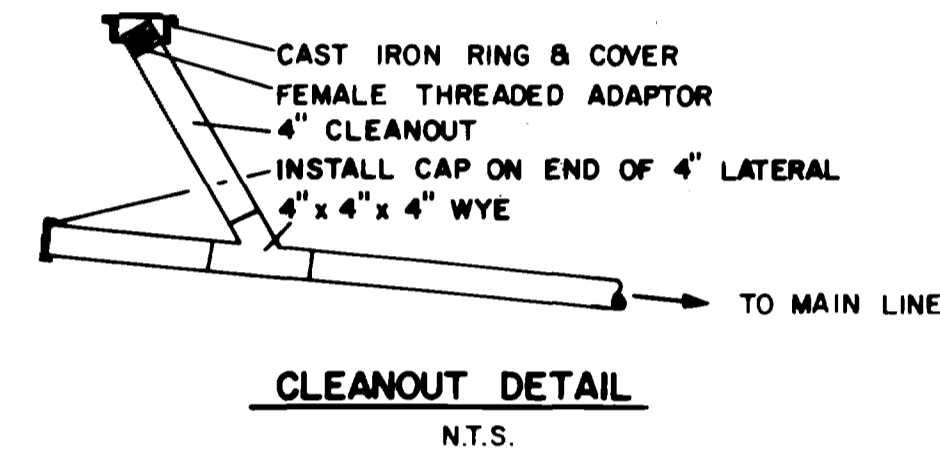
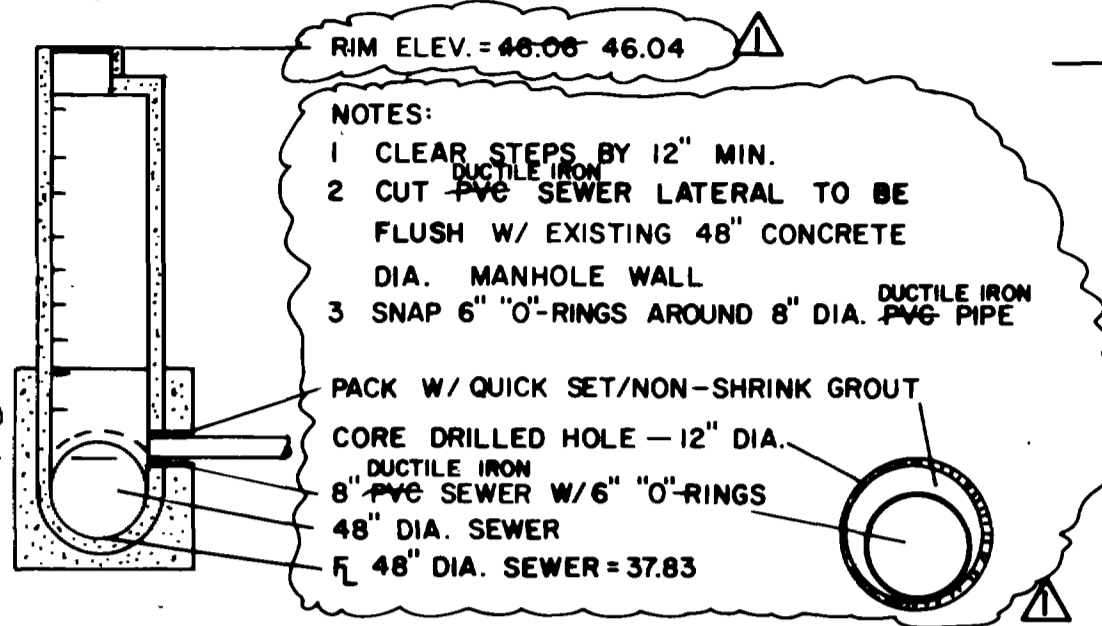


AS BUILT DRAWINGS

SCALE: 1" = 50'



VICINITY MAP



GENERAL NOTES

- ALL SANITARY SEWER PIPE TO BE PVC SDR-35 UNLESS OTHERWISE NOTED.
- SANITARY SEWER TO BE CONSTRUCTED IN ACCORDANCE WITH CITY OF GRAND JUNCTION STANDARD SPECS.
- ALL MATERIALS AND WORKMANSHIP SHALL BE SUBJECT TO INSPECTION BY THE ENGINEER. THE CITY OF GRAND JUNCTION RESERVES THE RIGHT TO ACCEPT OR REJECT ANY MATERIALS AND WORKMANSHIP THAT DOES NOT CONFORM TO THE STANDARDS AND SPECIFICATIONS OF THE CITY OF GRAND JUNCTION.
- THE CONTRACTOR SHALL HAVE ONE SIGNED COPY OF THE PLANS, AND A COPY OF THE CITY OF GRAND JUNCTION'S STANDARDS AND SPECIFICATIONS AT THE JOB SITE AT ALL TIMES.

	4/2/91	AS-BUILTS	MDY
	4/2/91	APPROXIMATE AS-BUILTS	MDY
	DATE	REVISION	BY
SANITARY SEWER SERVICE FOR UNITED COMPANIES ASPHALT PLANT AT 2521 RIVER ROAD GRAND JUNCTION, COLORADO			
ROLLAND ENGINEERING 518 28 Road Suite B-103 Grand Junction, Colorado 81501 (970) 842-4300	DESIGNED	CHECKED	TDR
	MDY		
	CFO	DATE	3/91
			SHEET 1

SCALE	HORIZONTAL	1" = 10'
	VERTICAL	1" = 5'

