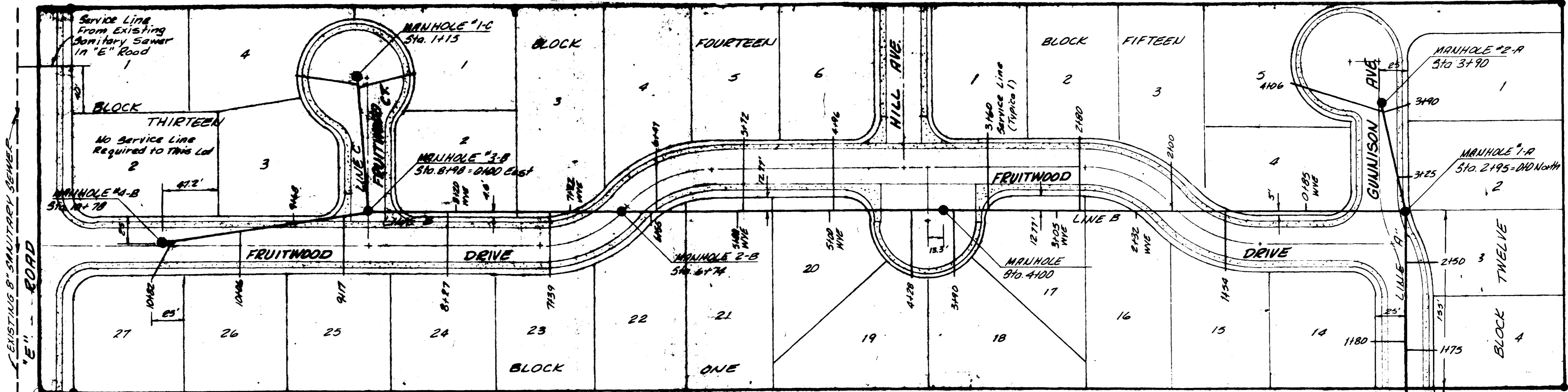
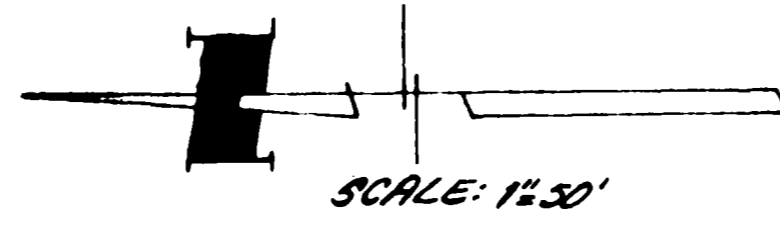


02-763



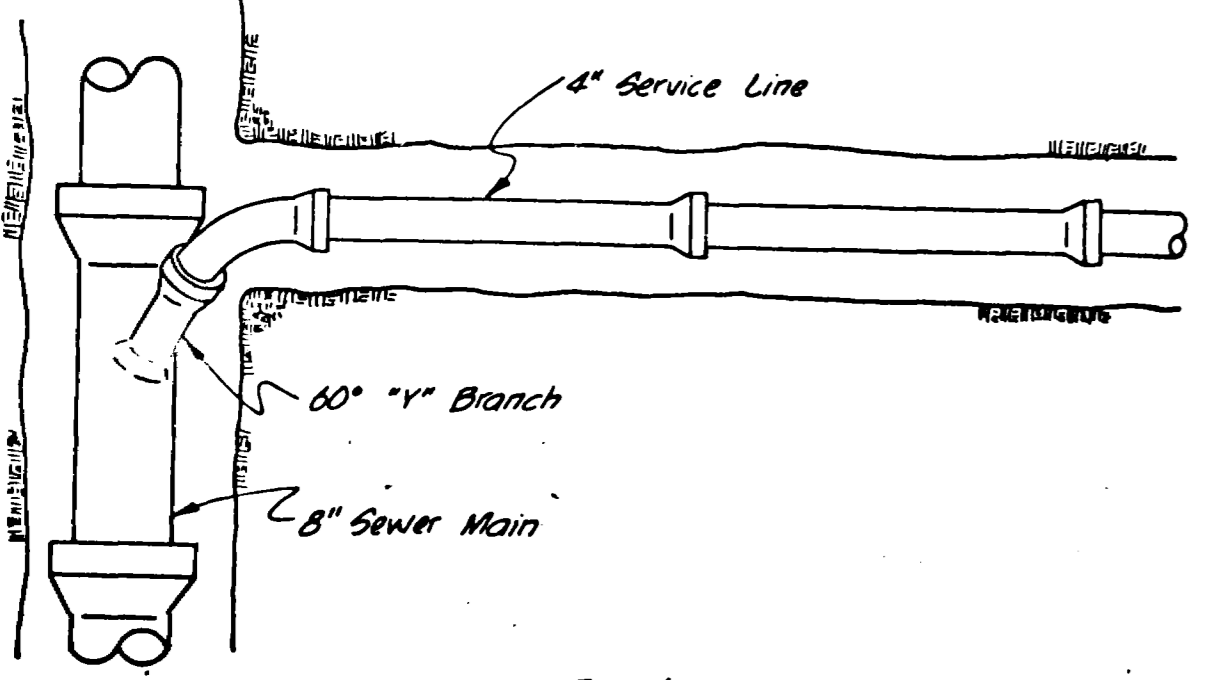
BENCH MARK  
BRASS CAP  
ELEV. 4658.99

BENCH MARK  
TOP OF FIRE HYDRANT  
SE CORNER OF GRAND VALLEY DRIVE  
AND "E" ROAD ELEV. 4659.79

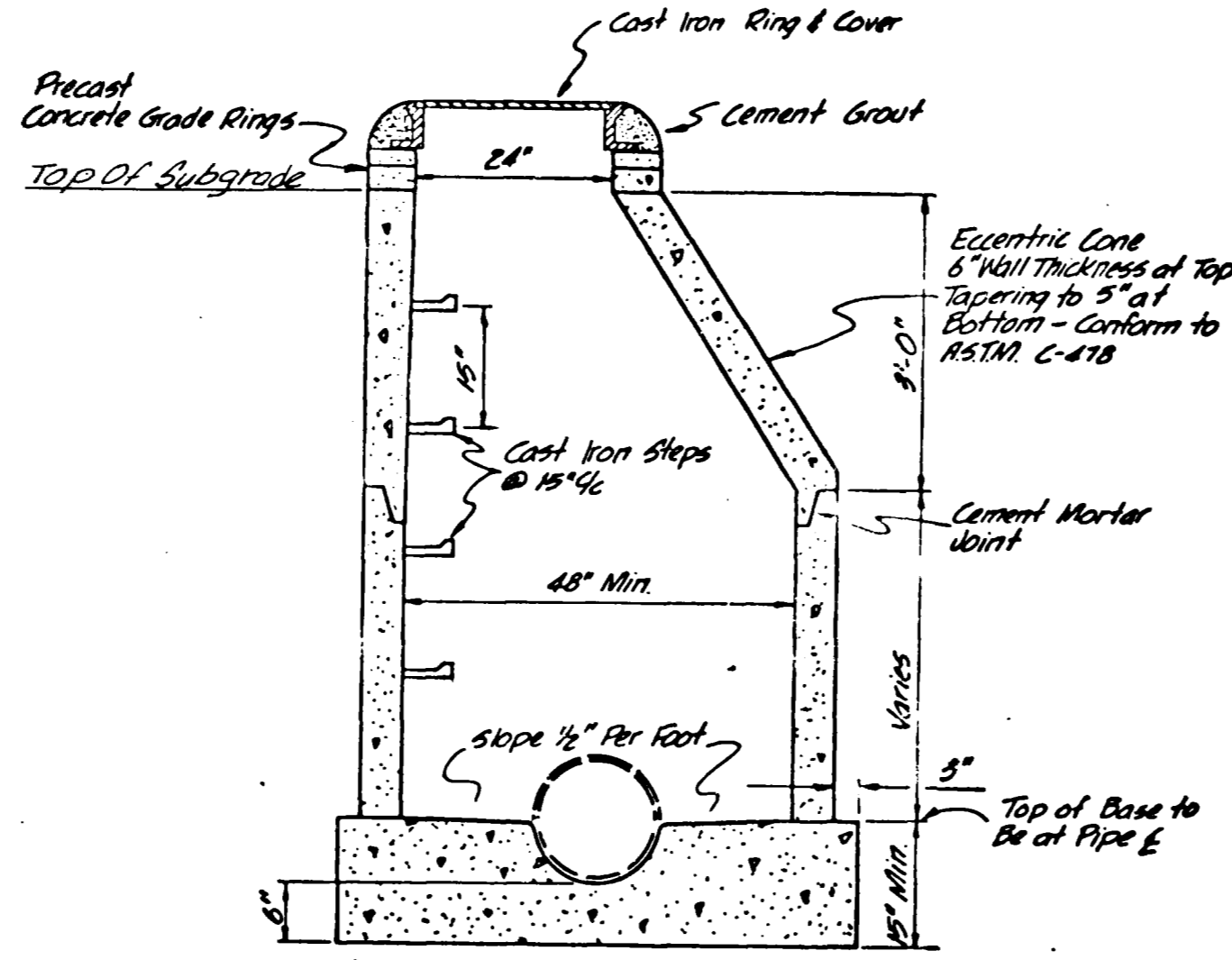
NOTE:  
MH #1-A to be set in curbwalk  
top of Rim Elev. to be established  
when curbwalk is poured.  
Top Rim = 46.81'

0+40  
JOIN EXISTING 8" STUB  
ELEVATION = 42.19'

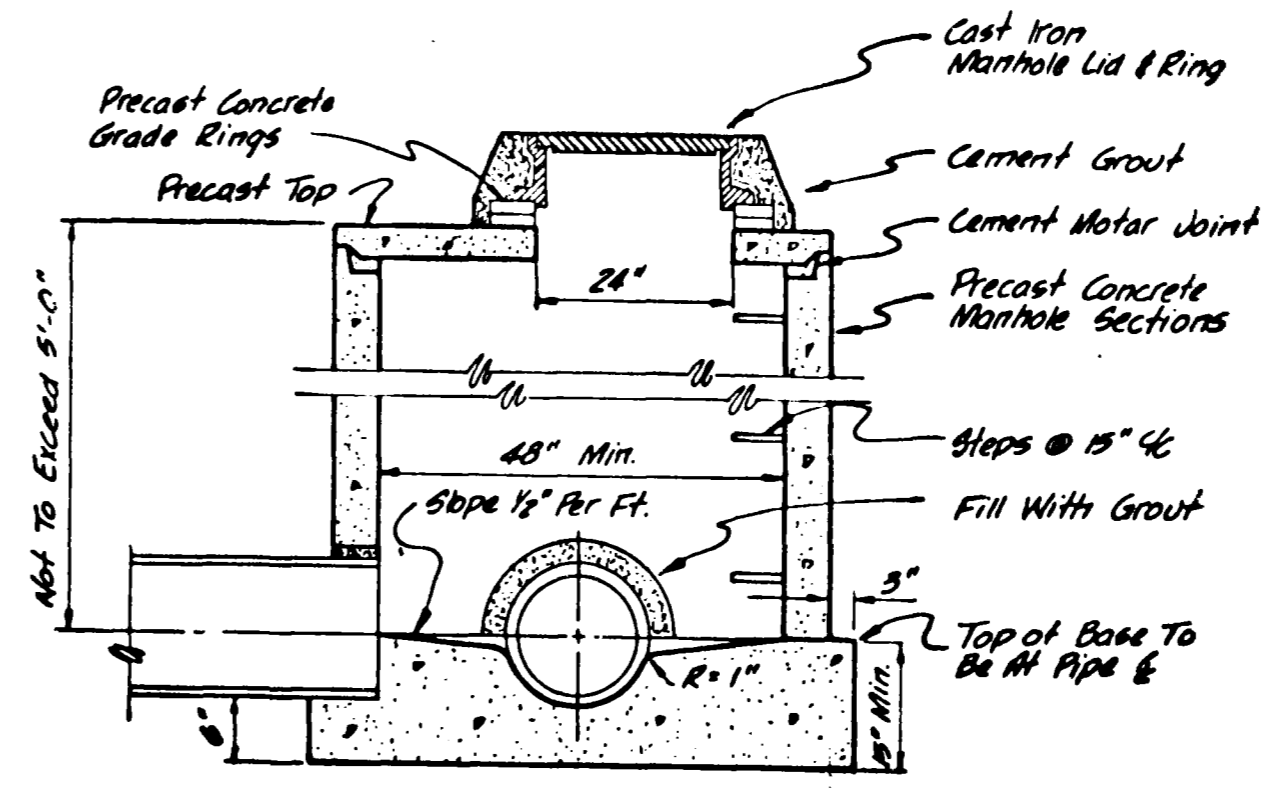
GRAND VALLEY DR  
EXISTING 8" SAN SEWER  
EXISTING MANHOLE #1-A  
ELEVATION 4642.03



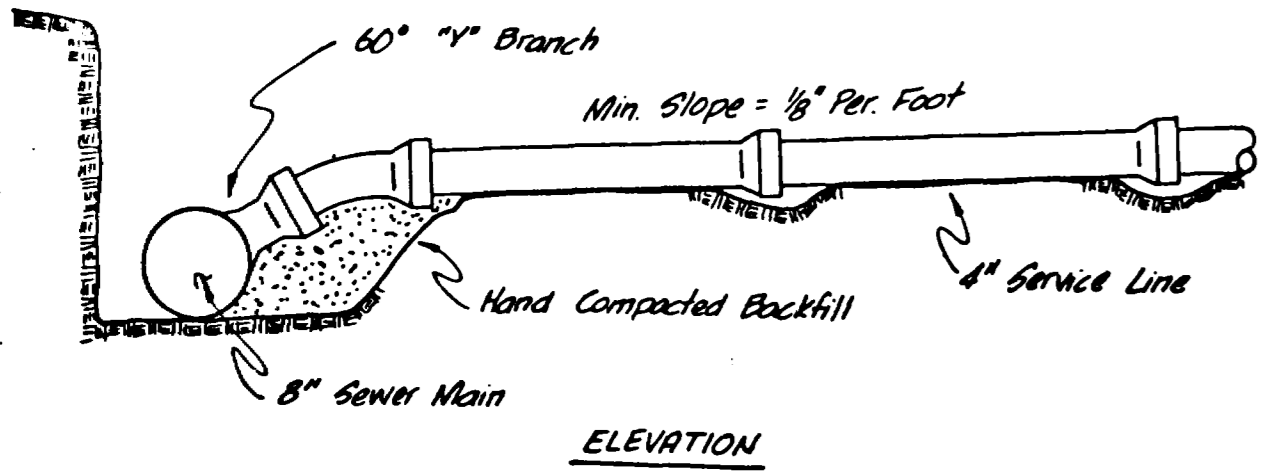
PLAN



STANDARD MANHOLE  
Scale: 1/4\"/>



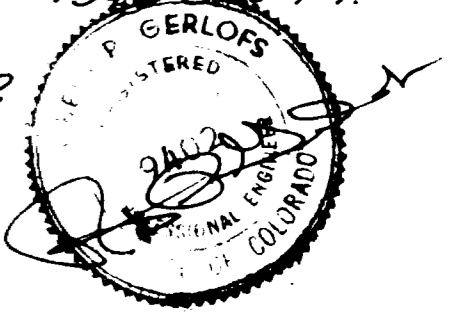
SHALLOW MANHOLE  
Scale: 1/4\"/>



STANDARD SERVICE CONNECTION  
No Scale

NOTE: SERVICE LINE LOCATION TO BE  
5' DOWNSTREAM FROM CENTER  
OF LOTS.

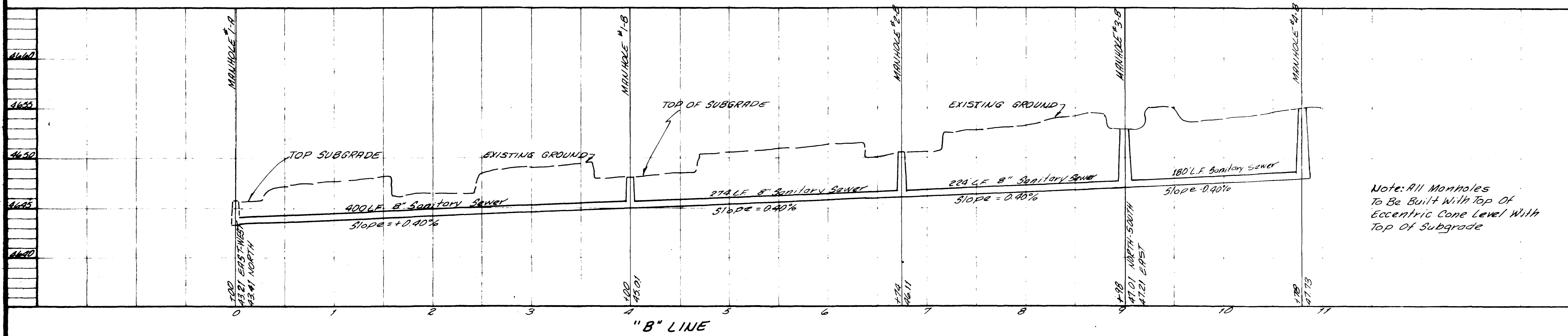
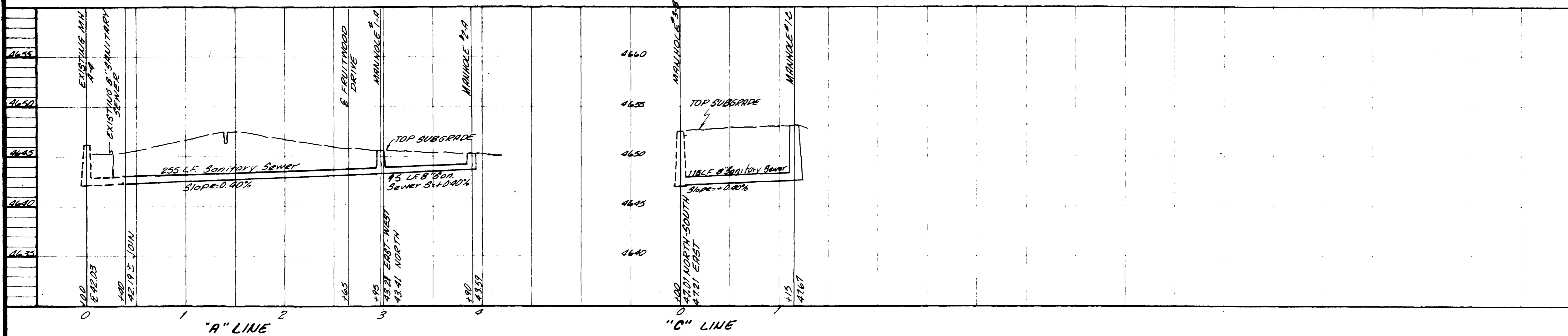
QUANTITIES  
8" SANITARY SEWER = 1542 LIN. FT.  
MANHOLES = 7  
4" SERVICE LINES = 32



AS BUILT DRAWINGS

APPROVED: \_\_\_\_\_ DATE: \_\_\_\_\_  
ROBERT P. GERLOFS  
REGISTERED PROFESSIONAL ENGINEER  
STATE OF COLORADO

ROBERT P. GERLOFS  
Engineering Consultant  
DATE: 02-10-12  
SCALE: AS SHOWN  
SAITARY SEWER PLAN AND DETAILS  
FRUITWOOD SUBDIVISION  
FILING NO. 01870  
MESA COUNTY, COLORADO  
SHEET 1  
2  
P.O. BOX 2872, GRAND JUNCTION, COLORADO 81501 PHONE 940-8966



Note: All Manholes To Be Built With Top Of Eccentric Cone Level With Top Of Subgrade

