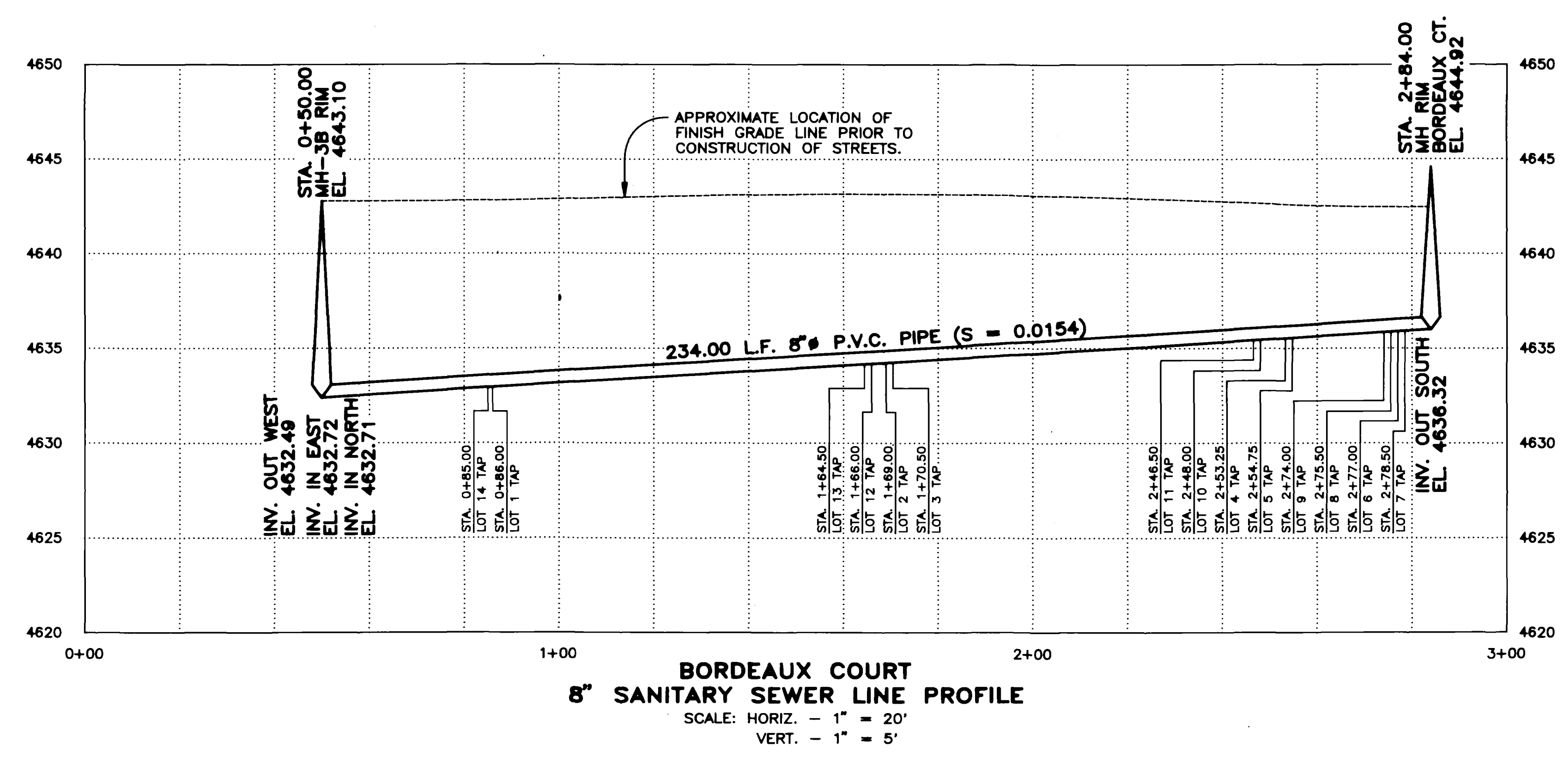
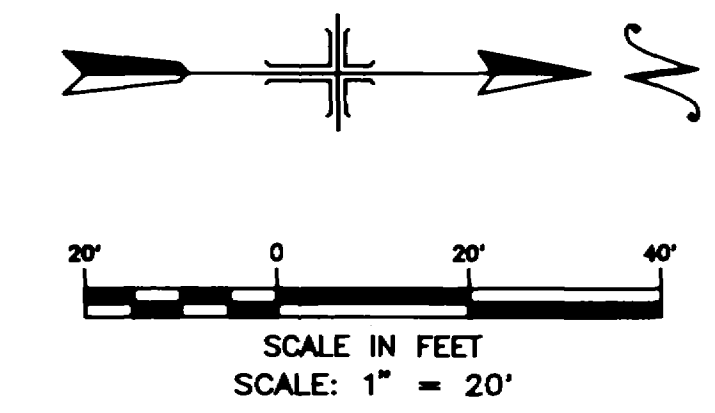


- LEGEND:**
- S — 8" # SANITARY SEWER MAIN
 - W — 4" # WATER MAIN
 - E — BURIED ELECTRIC CABLE
 - G — BURIED GAS MAIN
 - S — 4" SANITARY SEWER TAP
 - W — UTE WATER TAP
 - MH ● — SANITARY SEWER MANHOLE
 - FH — FIRE HYDRANT



- NOTES:**
- 1). CONSTRUCTION TESTING AND AS-BUILT DRAWINGS BY WESTERN ENGINEERS, INC., GRAND JUNCTION, COLORADO.
 - 2). DESIGN BY NICHOLS ASSOCIATES, INC., MOLINA, COLORADO.
 - 3). CONSTRUCTION STAKING BY M.A.P., INC., MESA, COLORADO.
 - 4). CONSTRUCTION BY THOR CONSTRUCTION, GRAND JUNCTION, COLORADO.
 - 5). RIM ELEVATION OF MANHOLE IN BORDEAUX COURT TO DESIGN, STREETS NOT CONSTRUCTED.
 - 6). INVERT ELEVATIONS FOR MANHOLE 3B FROM ARBOR CIRCLE & EAST ARBOR BOULEVARD AS-BUILT DRAWING BY WESTERN ENGINEERS, INC., DATED NOVEMBER, 1990, DRAWING NO. 2783-1143-1.
 - 7). DISTANCES DEPICTED AT END OF SANITARY SEWER AND WATER TAPS ARE PERPENDICULAR OFFSET DISTANCES TO NEAREST LOT LINES.
 - 8). LAMP TEST ON 8" SANITARY SEWER PASSED WITH A 100% MOON.
 - 9). AIR LEAKAGE TEST ON 8" # SANITARY SEWER AND 4" # SANITARY SEWER TAPS HELD 3.5 P.S.I. WITHOUT VARIATION FOR 7.0 MINUTES. APPROXIMATELY 240 L.F. 8" # P.V.C. AND 630 L.F. 4" # P.V.C. SANITARY SEWER LINE TESTED.

WESTERN ENGINEERS, INC. CONSULTING ENGINEERS / LAND SURVEYORS
 2130 Hwy 6 & 5th Street, Grand Junction, CO (970)944-8888

SANITARY SEWER AND WATER AS-BUILT FOR
HIGHLIFE HOMES OF THE VINEYARD FILING NO. 3 BORDEAUX COURT - PHASE 1
 MESA COUNTY, COLORADO

SURVEYED	R.W.Q.	DRAWN	M.J.L.	CHECKED	M.J.L.
DATE	3-15-93	WEI DWG. NO.	3399-1143-8		

Rev 3-29-93