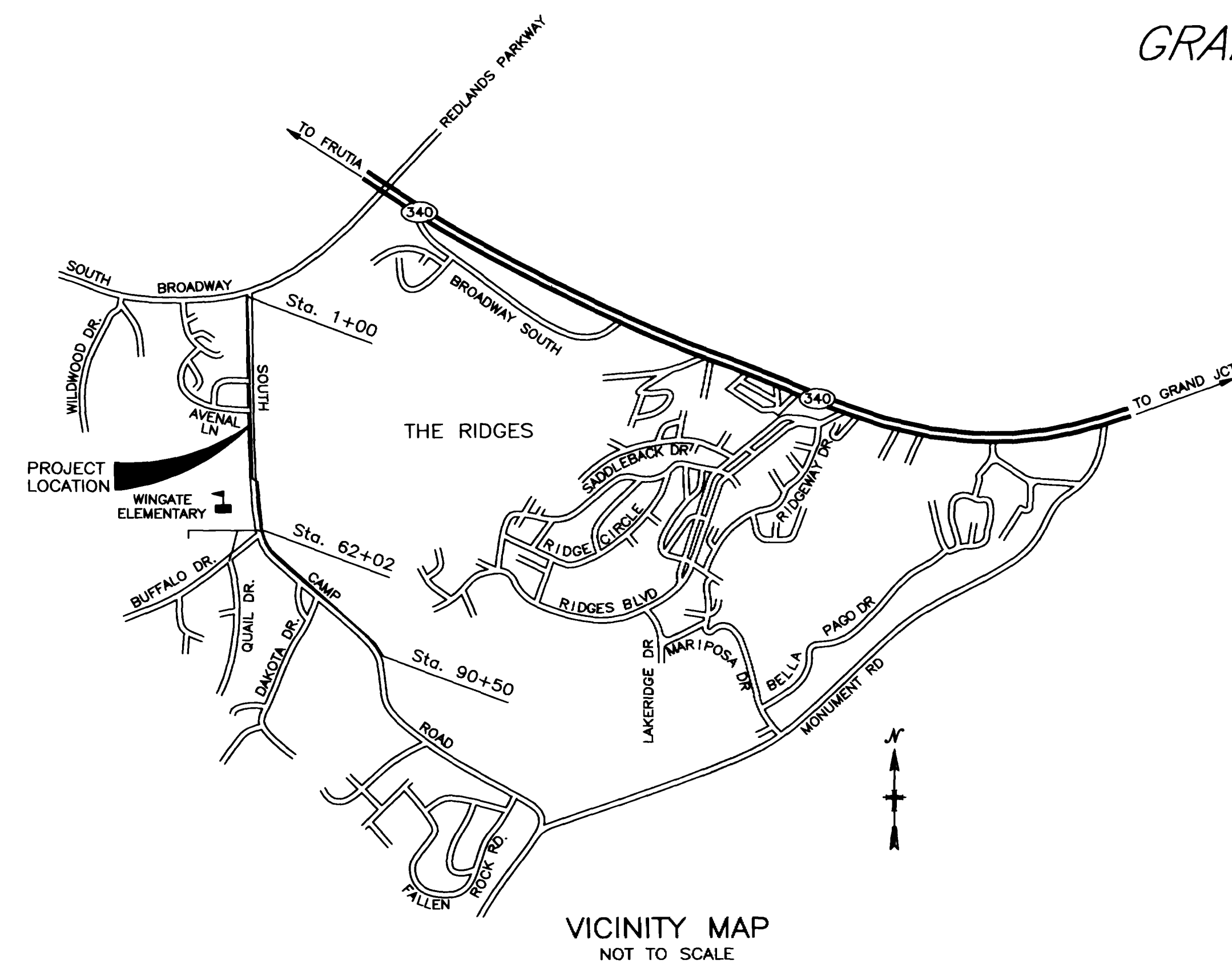


SOUTH CAMP ROAD SEWER LINE

PREPARED FOR
THE CITY OF GRAND JUNCTION
250 North Fifth Street
Grand Junction, Colorado

PREPARED BY
WESTERN ENGINEERS, INC.
2150 HWY 6 & 50
GRAND JUNCTION, CO 81505
242-5202



INDEX

DESCRIPTION	SHEET
COVER/INDEX	1
PLAN & PROFILES	2 - 7
BUFFALO EXTENSION	8 - 9
DETAILS	10

AS CONSTRUCTED

1-15-95

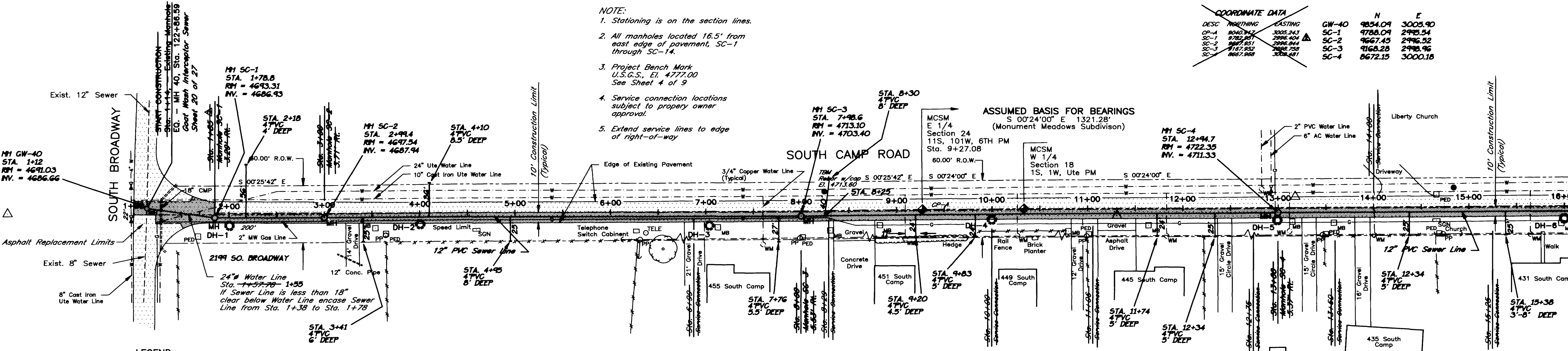
CITY OF GRAND JUNCTION
APPROVED FOR CONSTRUCTION BY:

TITLE	DATE

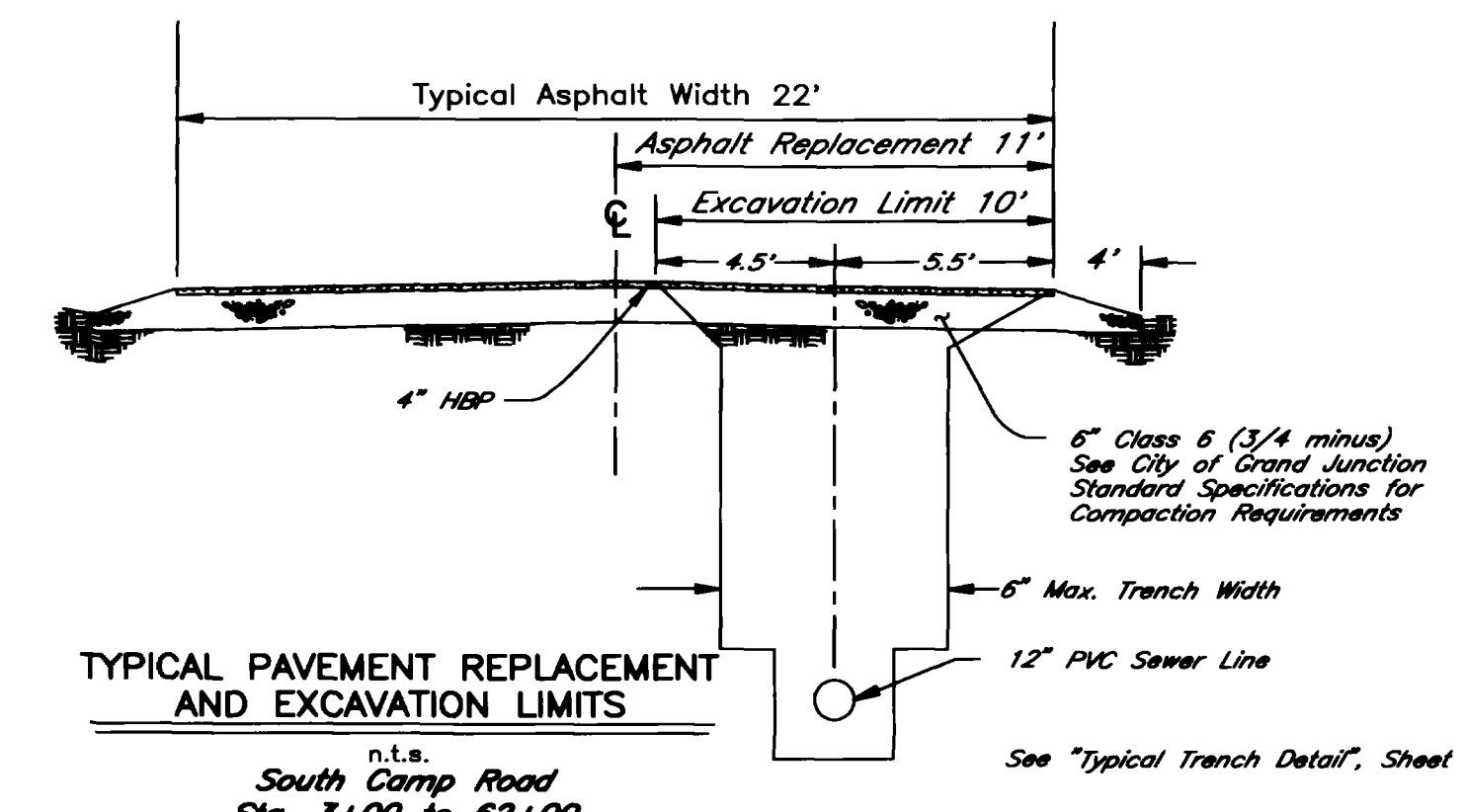
COORDINATE DATA

DESC	NORTHING	EASTING	N	E
GW-40	9654.09	3005.90		
SC-1	4788.09	2995.54		
SC-2	4667.45	2996.52		
SC-3	4168.28	2998.96		
SC-4	8672.15	3000.18		

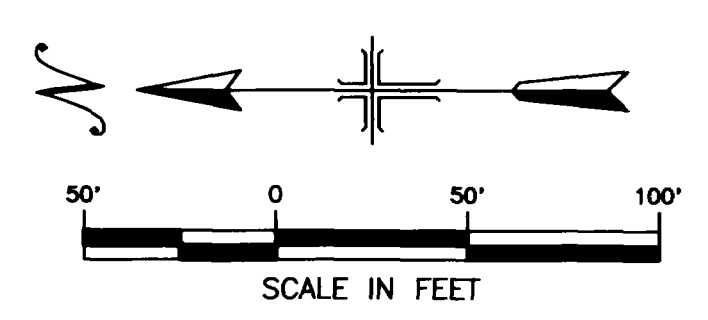
- NOTE:**
1. Stationing is on the section lines.
 2. All manholes located 16.5' from east edge of pavement, SC-1 through SC-14.
 3. Project Bench Mark U.S.G.S., El. 4777.00 See Sheet 4 of 9
 4. Service connection locations subject to property owner approval.
 5. Extend service lines to edge of right-of-way



- LEGEND**
- Mesa County Survey Monument
 - U.S.G.S. Benchmark
 - Found Survey Monument
 - Survey Control Point
 - Survey Line
 - Power Pole
 - Electric Vault
 - Power Pole Guy Wire
 - Overhead Power Line
 - Buried Electric Line
 - Buried Gas Line
 - Water Meter
 - Water Valve
 - Fire Hydrant
 - Buried Water Line
 - Telephone Vault
 - Telephone Pedestal
 - Buried Telephone
 - Sanitary Manhole
 - Sanitary Sewer Line
 - Mail Box
 - Sign Post
 - Fence
 - Drill Hole
 - Existing Asphalt
 - Asphalt Patch

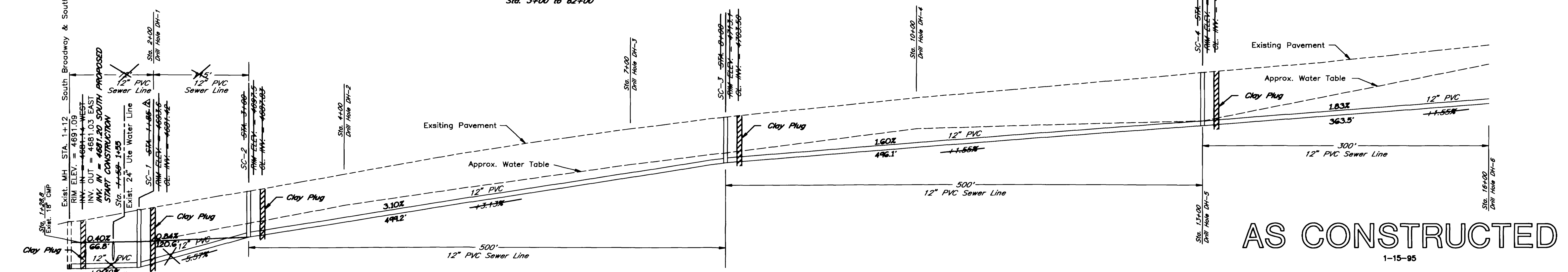


SEWER LINE PLAN
Scale: 1"=50'

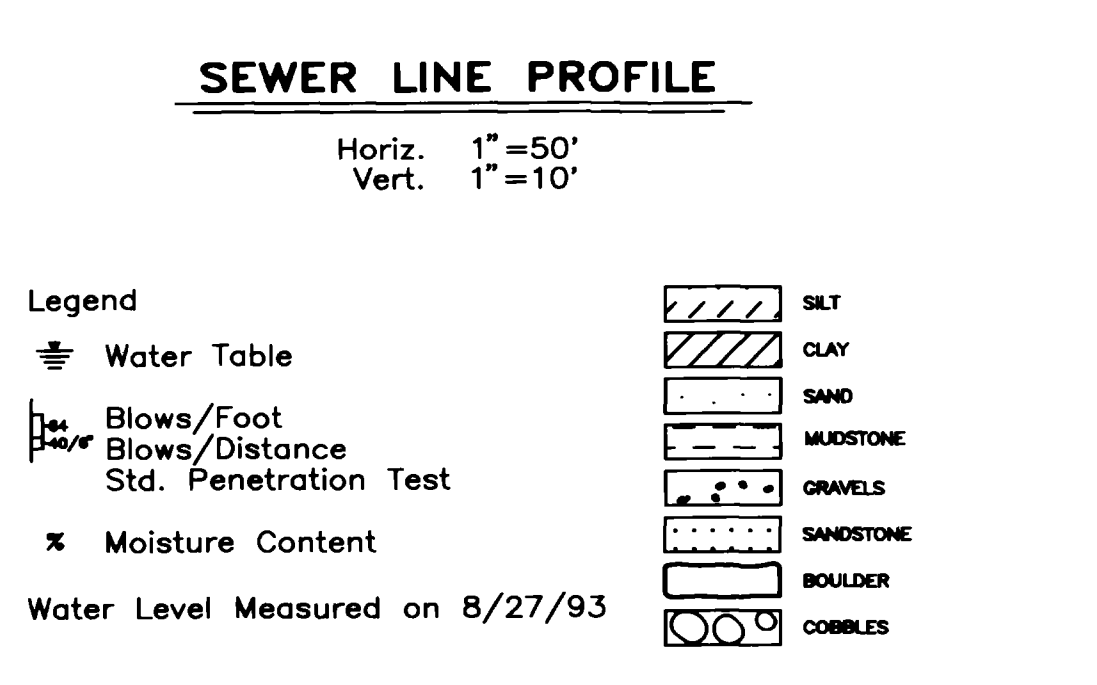
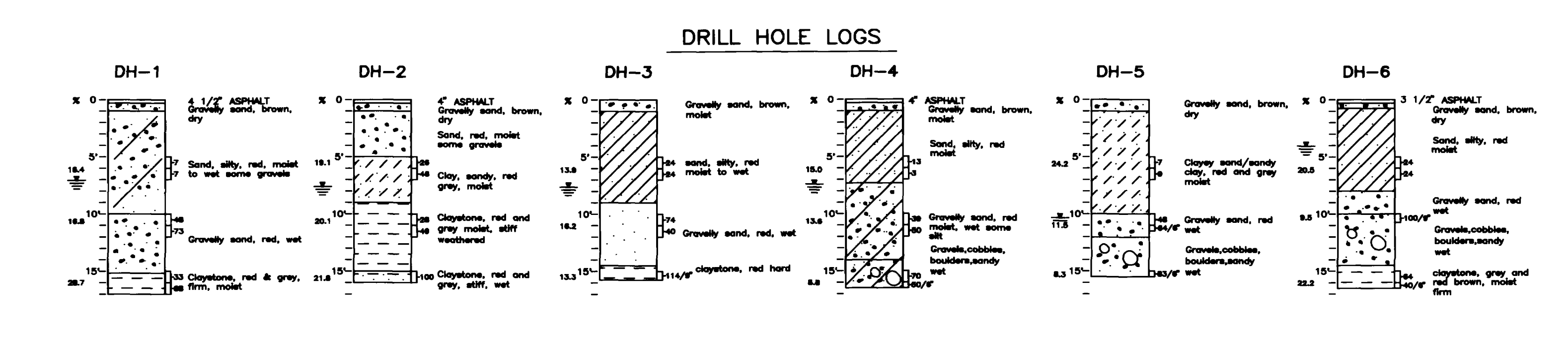


UTILITY LOCATIONS
Utility locations are approximate as provided by utility company location plans. Verify and field locate prior to any excavation, grading, or drilling. Utility Notification Center must be called two business days in advance, 1-800-922-1987. Utility Companies who are not members of the Utility Notification Center shall be contacted directly by the Contractor.

- NOTES:**
1. All construction shall conform and adhere to the City of Grand Junction, Department of Public Works and Utilities, Engineering Section, "Standard Specifications for Construction of Water Lines, Sanitary Sewers, Storm Drains, Underdrains, and Irrigation Systems", "Detailed Street Construction Specifications" and "Standard Details."



4690.5	4691.3	4681.23	4682.2	4681.31	4681.38	4682.26	4683.15	4685.8	4685.04	4686.7	4686.44	4687.5	4687.83	4688.4	4688.61	4689.3	4689.40	4700.2	4690.18	4701.0	4690.96	4701.9	4691.75	4702.8	4692.53	4693.31	4704.6	4694.10	4705.4	4694.88	4706.2	4695.66	4696.45	4707.8	4697.23	4708.5	4708.2	4698.80	4709.9	4699.58	4710.6	4707.0	4711.2	4711.8	4701.93	4712.5	4702.72	4713.1	4703.50	4713.6	4703.89	4714.1	4704.28	4704.66	4715.1	4705.05	4715.5	4705.44	4716.0	4705.83	4716.5	4706.21	4706.60	4717.0	4706.99	4717.9	4707.37	4718.3	4707.76	4718.7	4708.15	4719.2	4708.54	4719.6	4708.92	4720.1	4709.31	4720.5	4709.70	4710.08	4721.4	4710.47	4721.9	4722.5	4711.25	4711.64	4712.02	4723.7	4712.41	4724.1	4724.5	4713.19	4725.1	4713.57	4725.6	4713.96	4726.1	4714.35	4726.6	4714.74	4727.1	4715.12	4727.7	4715.51	4728.2	4715.90
--------	--------	---------	--------	---------	---------	---------	---------	--------	---------	--------	---------	--------	---------	--------	---------	--------	---------	--------	---------	--------	---------	--------	---------	--------	---------	---------	--------	---------	--------	---------	--------	---------	---------	--------	---------	--------	--------	---------	--------	---------	--------	--------	--------	--------	---------	--------	---------	--------	---------	--------	---------	--------	---------	---------	--------	---------	--------	---------	--------	---------	--------	---------	---------	--------	---------	--------	---------	--------	---------	--------	---------	--------	---------	--------	---------	--------	---------	--------	---------	---------	--------	---------	--------	--------	---------	---------	---------	--------	---------	--------	--------	---------	--------	---------	--------	---------	--------	---------	--------	---------	--------	---------	--------	---------	--------	---------



WESTERN CONSULTING ENGINEERS / LAND SURVEYORS
ENGINEERS, INC. 2180 Hwy # 6 & 96, Grand Junction, CO (970)467-5887

PREPARED FOR
CITY OF GRAND JUNCTION
SOUTH CAMP SEWER LINE
PLAN AND PROFILE
Sta. 1+00 to Sta. 16+00
MESA COUNTY, COLORADO

DESIGN	Irg	DRAWN	S.N.B.	SHEET	2
CHECKED	W.E.I.	APPROVED	W.E.I.	OF	10
DATE	8/15/93	WEI DWG. NO.	3486		

NO. DATE REVISION - DESCRIPTION BY

- NOTE:
1. Stationing is on the section lines.
 2. All manholes located 16.5' from east edge of pavement, SC-1 through SC-14.
 3. Project Bench Mark U.S.G.S., El. 4777.00 See Sheet 4 of 9
 4. Service connection locations subject to property owner approval.
 5. Extend service lines to edge of right-of-way

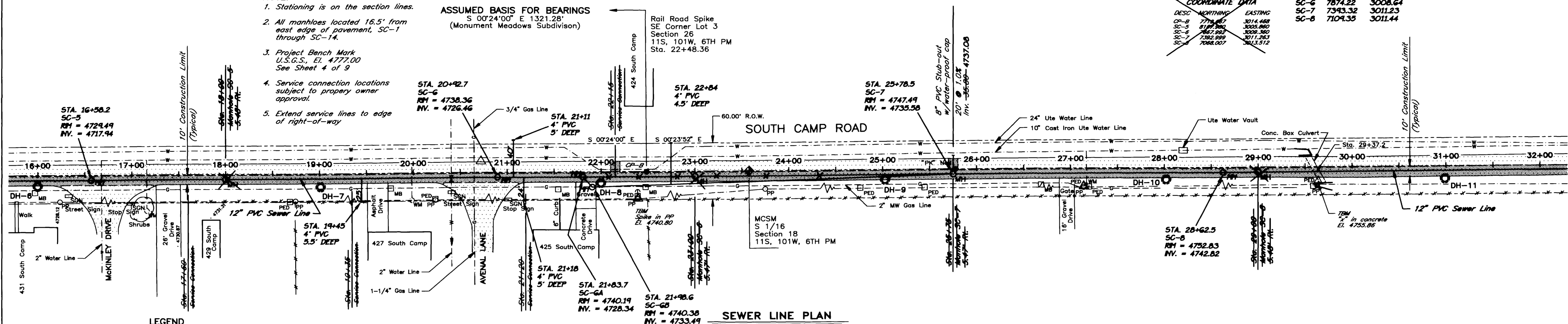
ASSUMED BASIS FOR BEARINGS
 S 00°24'00" E 1321.28'
 (Monument Meadows Subdivision)

Rail Road Spike
 SE Corner Lot 3
 Section 26
 11S, 101W, 6TH PM
 Sta. 22+48.36

COORDINATE DATA

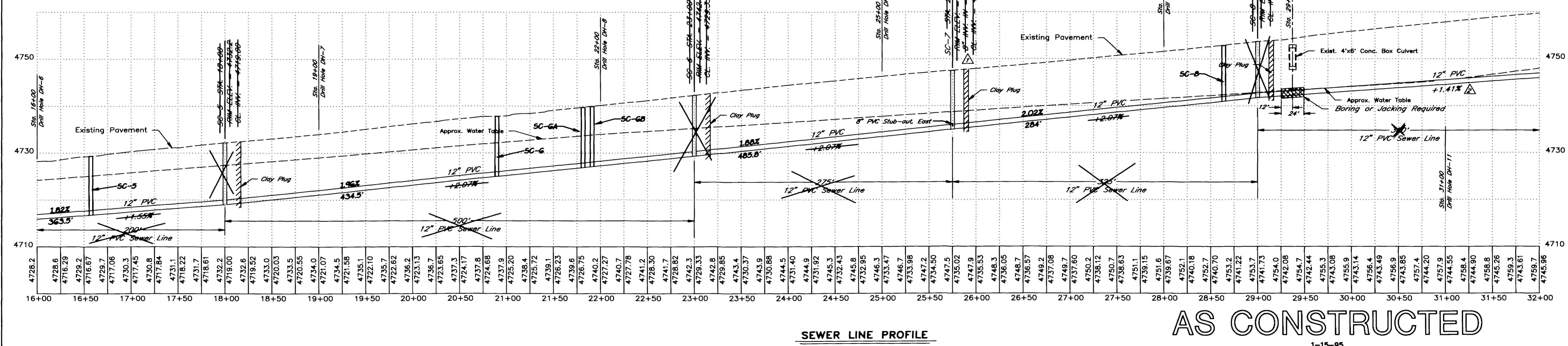
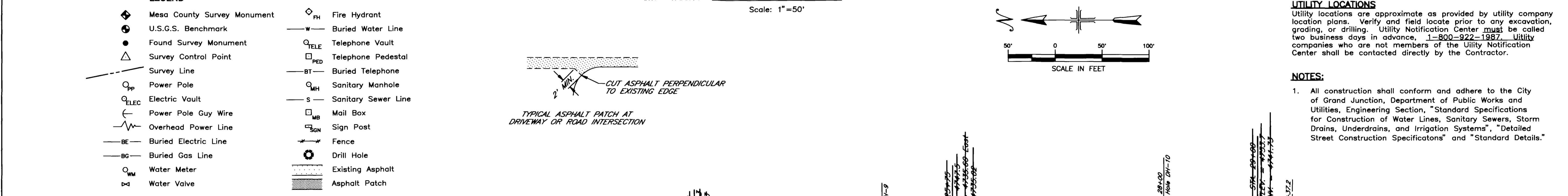
DESC	NORTHING	EASTING
CP-B	7773.87	3014.488
SC-5	8177.960	3005.860
SC-6	7852.822	3008.360
SC-7	7382.889	3011.283
SC-8	7068.007	3013.512

	N	E
SC-5	8308.69	3003.81
SC-6	7874.22	3008.64
SC-7	7393.32	3011.23
SC-8	7104.35	3011.44



UTILITY LOCATIONS
 Utility locations are approximate as provided by utility company location plans. Verify and field locate prior to any excavation, grading, or drilling. Utility Notification Center must be called two business days in advance, 1-800-922-1987. Utility companies who are not members of the Utility Notification Center shall be contacted directly by the Contractor.

- NOTES:
1. All construction shall conform and adhere to the City of Grand Junction, Department of Public Works and Utilities, Engineering Section, "Standard Specifications for Construction of Water Lines, Sanitary Sewers, Storm Drains, Underdrains, and Irrigation Systems", "Detailed Street Construction Specifications" and "Standard Details."



WESTERN CONSULTING ENGINEERS / LAND SURVEYORS
 ENGINEERS, INC. 2180 Hwy 6 & 90, Grand Junction, CO (970)42-5802

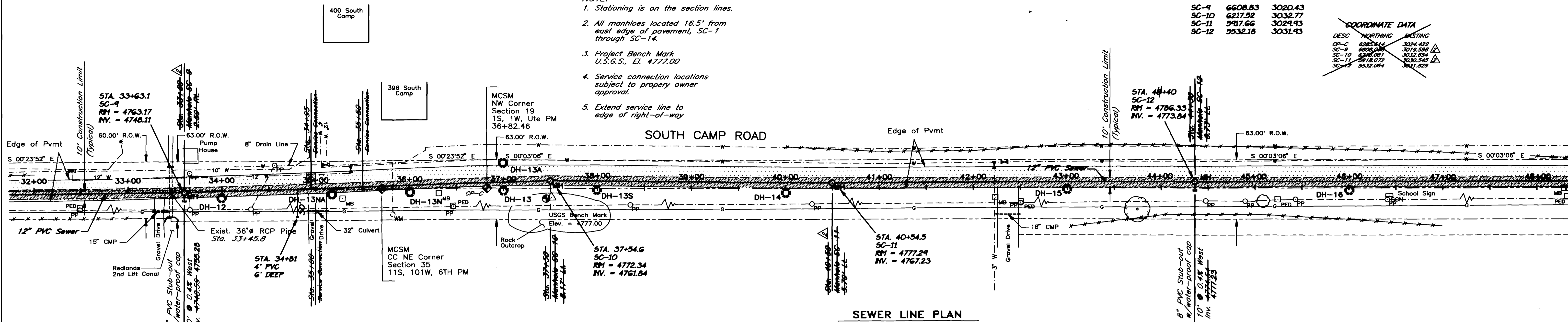
PREPARED FOR
CITY OF GRAND JUNCTION
SOUTH CAMP SEWER LINE
 PLAN AND PROFILE
 Sta. 16+00 to Sta. 32+00
 MESA COUNTY, COLORADO

DESIGN	Irg	DRAWN	S.N.B.	SHEET	3
CHECKED	W.E.I.	APPROVED	W.E.I.	OF	10
DATE	8/15/93	WEI DWG. NO.	3486		

	N	E
SC-9	6608.83	3020.43
SC-10	6217.52	3032.77
SC-11	5917.66	3024.43
SC-12	5532.18	3031.43

DESC	NORTHING	EASTING
CP-C	6282.616	3024.422
SC-9	6608.831	3012.388
SC-10	6217.521	3032.654
SC-11	5918.072	3030.545
SC-12	5532.064	3031.629

- NOTE:
1. Stationing is on the section lines.
 2. All manholes located 16.5' from east edge of pavement, SC-1 through SC-14.
 3. Project Bench Mark U.S.G.S., El. 4777.00
 4. Service connection locations subject to property owner approval.
 5. Extend service line to edge of right-of-way

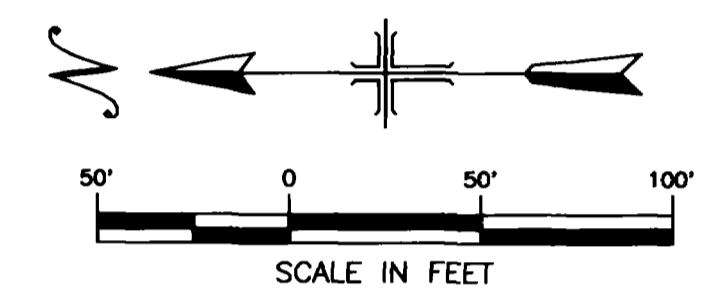


SEWER LINE PLAN

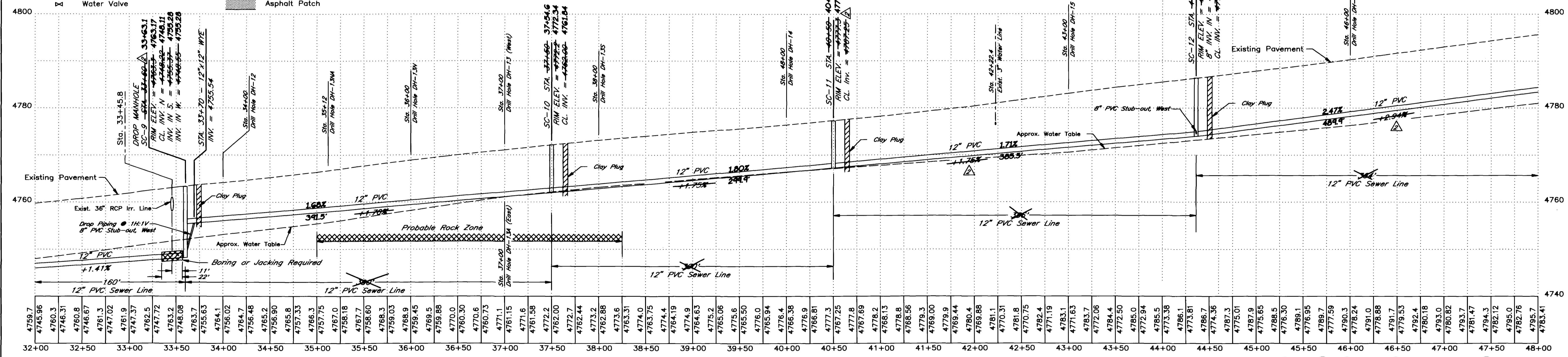
Scale: 1"=50'

- LEGEND
- Mesa County Survey Monument
 - U.S.G.S. Benchmark
 - Found Survey Monument
 - Survey Control Point
 - Survey Line
 - Power Pole
 - Electric Vault
 - Power Pole Guy Wire
 - Overhead Power Line
 - Buried Electric Line
 - Buried Gas Line
 - Water Meter
 - Water Valve
 - Fire Hydrant
 - Buried Water Line
 - Telephone Vault
 - Telephone Pedestal
 - Buried Telephone
 - Sanitary Manhole
 - Sanitary Sewer Line
 - Mail Box
 - Sign Post
 - Fence
 - Drill Hole
 - Existing Asphalt
 - Asphalt Patch

UTILITY LOCATIONS
Utility locations are approximate as provided by utility company location plans. Verify and field locate prior to any excavation, grading, or drilling. Utility Notification Center must be called two business days in advance, 1-800-922-1987. Utility Companies who are not members of the Utility Notification Center shall be contacted directly by the Contractor.



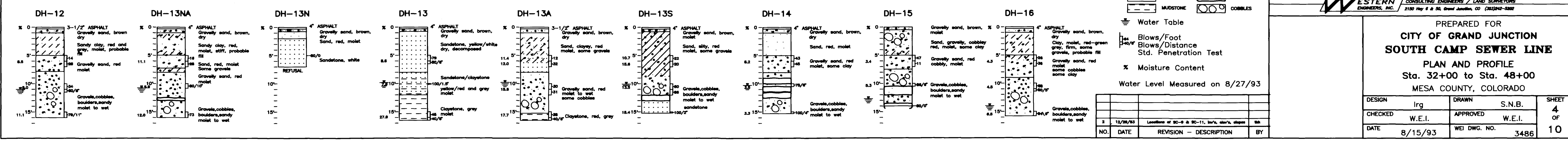
- NOTES:
1. All construction shall conform and adhere to the City of Grand Junction, Department of Public Works and Utilities, Engineering Section, "Standard Specifications for Construction of Water Lines, Sanitary Sewers, Storm Drains, Underdrains, and Irrigation Systems", "Detailed Street Construction Specifications" and "Standard Details."



SEWER LINE PROFILE

Horiz. 1"=50'
Vert. 1"=10'

DRILL HOLE LOGS



Legend

- SILT
- CLAY
- SAND
- MUDSTONE
- GRAVELS
- SANDSTONE
- BOULDER
- COBBLES
- Water Table
- Blows/Foot
- Blows/Distance
- Std. Penetration Test
- % Moisture Content
- Water Level Measured on 8/27/93

NO.	DATE	REVISION	DESCRIPTION	BY
1	12/29/93		Location of SC-9 & SC-11, 16.5' clear, slope 1%	WEI

AS CONSTRUCTED

1-15-95

WESTERN ENGINEERS & LAND SURVEYORS
CONSULTING ENGINEERS / LAND SURVEYORS
2150 Hwy 8 & St. Grand Junction, CO (970)242-0282

PREPARED FOR
CITY OF GRAND JUNCTION
SOUTH CAMP SEWER LINE
PLAN AND PROFILE
Sta. 32+00 to Sta. 48+00
MESA COUNTY, COLORADO

DESIGN	lrg	DRAWN	S.N.B.	SHEET	4
CHECKED	W.E.I.	APPROVED	W.E.I.	OF	10
DATE	8/15/93	WEI DWG. NO.	3486		

- NOTE:
1. Stationing is on the section lines.
 2. All manholes located 16.5' from east edge of pavement, SC-1 through SC-14.
 3. Project Bench Mark U.S.G.S., El. 4777.00 See Sheet 4 of 9
 4. Service connection locations subject to property owner approval.
 5. Extend service lines to edge of right-of-way

COORDINATE DATA

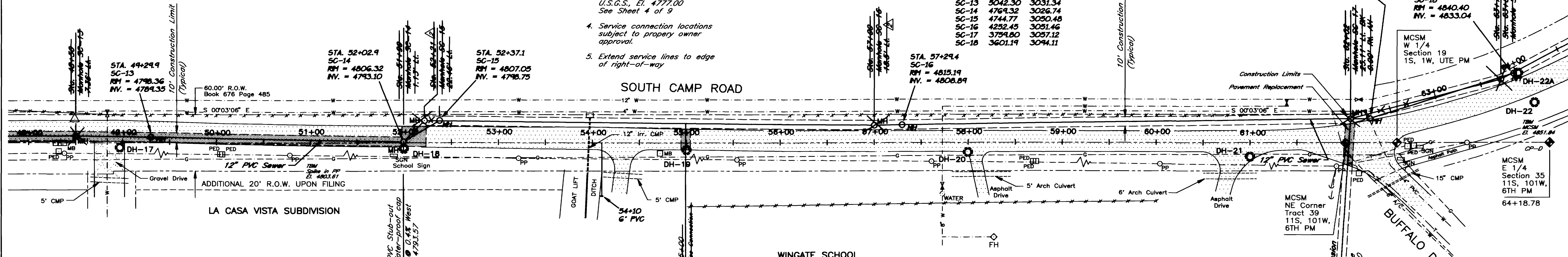
DESIGN	NORTHING	EASTING
CP-D	3648.285	3026.887
SC-13	5178.000	3032.829
SC-14	4399.000	3026.914
SC-15	4248.813	3048.185
SC-16	4268.070	3044.757
SC-17	3781.089	3032.765
SC-18	3601.355	3094.143

	N	E
SC-13	5042.30	3031.34
SC-14	4769.32	3026.74
SC-15	4744.77	3050.48
SC-16	4232.45	3051.46
SC-17	3759.80	3057.12
SC-18	3601.19	3094.11

NOTE:
At SC-17 Stationing changes from section line to sewer line.

STA. 62+22.1
SC-17
RM = 4831.27
INV. = 4818.72

STA. 63+85
SC-18
RM = 4840.40
INV. = 4833.04

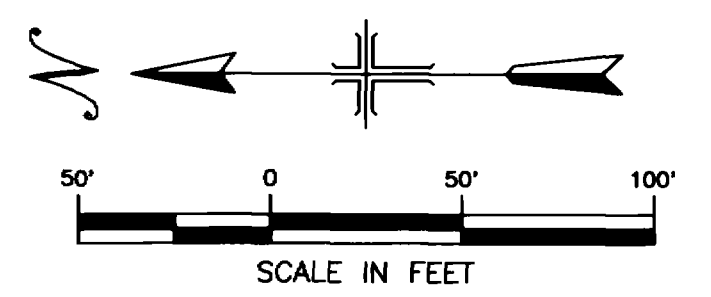


SEWER LINE PLAN
Scale: 1"=50'

UTILITY LOCATIONS
Utility locations are approximate as provided by utility company location plans. Verify and field locate prior to any excavation, grading, or drilling. Utility Notification Center must be called two business days in advance, 1-800-922-1987. Utility companies who are not members of the Utility Notification Center shall be contacted directly by the Contractor.

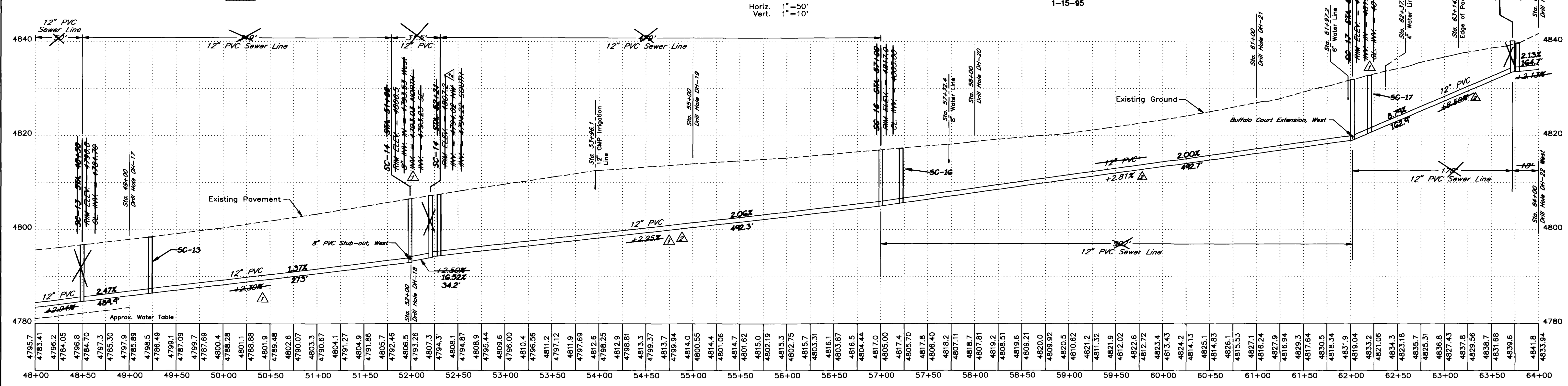
- NOTES:
1. All construction shall conform and adhere to the City of Grand Junction, Department of Public Works and Utilities, Engineering Section, "Standard Specifications for Construction of Water Lines, Sanitary Sewers, Storm Drains, Underdrains, and Irrigation Systems", "Detailed Street Construction Specifications" and "Standard Details."

- LEGEND
- Mesa County Survey Monument
 - U.S.G.S. Benchmark
 - Found Survey Monument
 - Survey Control Point
 - Survey Line
 - Power Pole
 - Electric Vault
 - Power Pole Guy Wire
 - Overhead Power Line
 - Buried Electric Line
 - Buried Gas Line
 - Water Meter
 - Water Valve
 - Fire Hydrant
 - Buried Water Line
 - Telephone Vault
 - Telephone Pedestal
 - Buried Telephone
 - Sanitary Manhole
 - Sanitary Sewer Line
 - Mail Box
 - Sign Post
 - Fence
 - Drill Hole
 - Existing Asphalt
 - Asphalt Patch

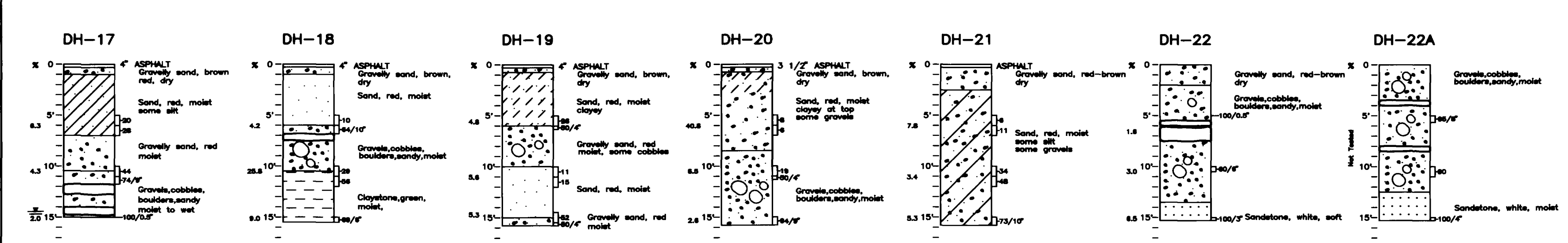


SEWER LINE PROFILE
Horiz. 1"=50'
Vert. 1"=10'

AS CONSTRUCTED



DRILL HOLE LOGS



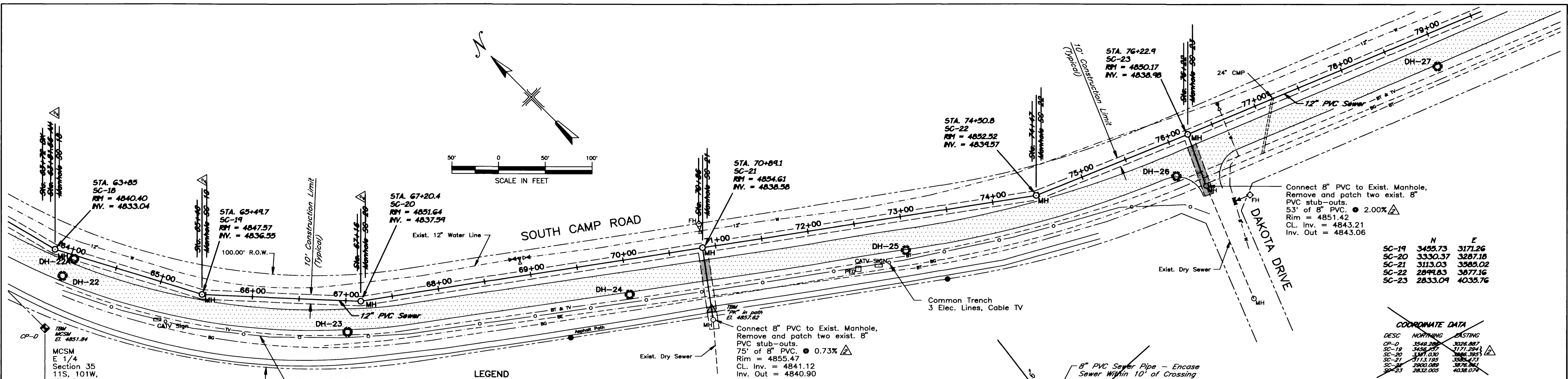
- Legend
- SILT
 - CLAY
 - SAND
 - MUDSTONE
 - Water Table
 - Blows/Foot
 - Blows/Distance
 - Std. Penetration Test
 - % Moisture Content
 - Water Level Measured on 8/27/93

WESTERN CONSULTING ENGINEERS / LAND SURVEYORS
ENGINEERS, INC. 2180 Hwy # 6 & 50, Grand Junction, CO 81502-5882

PREPARED FOR
CITY OF GRAND JUNCTION
SOUTH CAMP SEWER LINE
PLAN AND PROFILE
Sta. 48+00 to Sta. 64+00
MESA COUNTY, COLORADO

DESIGN	Irg	DRAWN	S.N.B.
CHECKED	W.E.I.	APPROVED	W.E.I.
DATE	8/15/93	WEI DWG. NO.	3486

SHEET 5 OF 10



Connect 8" PVC to Exist. Manhole, Remove and patch two exist. 8" PVC stub-outs.
53' of 8" PVC. @ 2.00% Δ
Rim = 4851.42
CL Inv. = 4843.21
Inv. Out = 4843.06

	N	E
SC-19	3455.73	3171.26
SC-20	3330.37	3287.18
SC-21	3113.03	3585.02
SC-22	2849.83	3877.16
SC-23	2833.04	4035.76

COORDINATE DATA

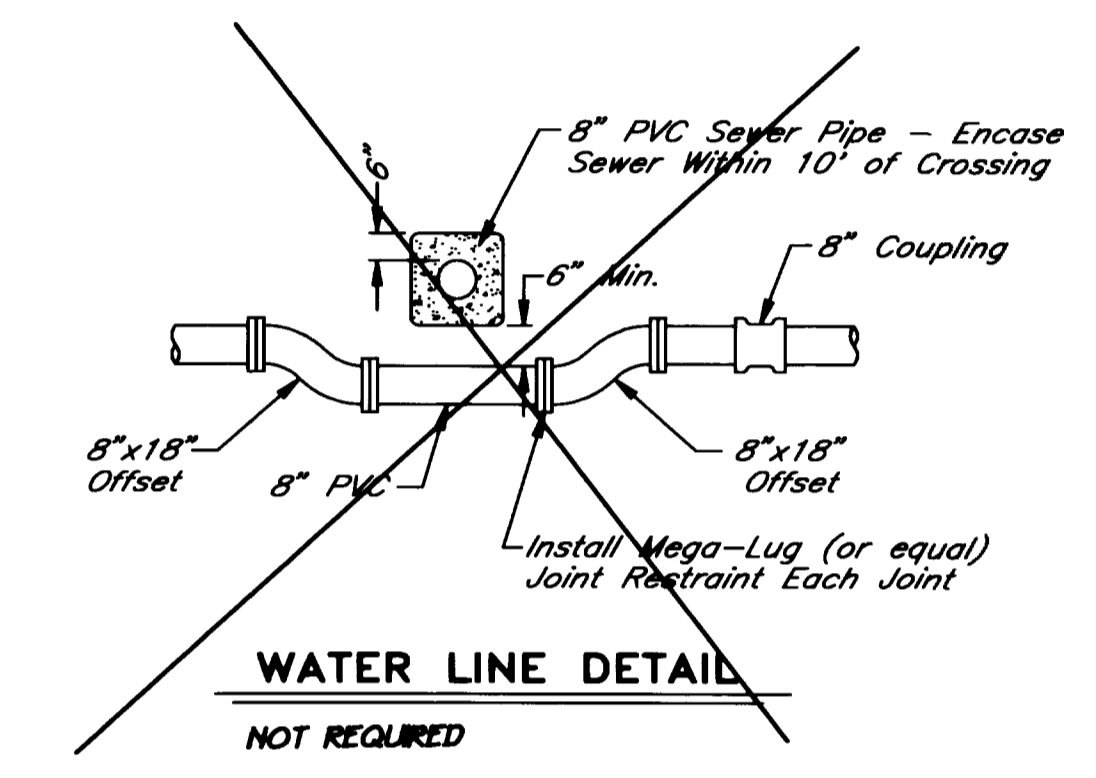
DESC	NORTHING	EASTING
CP-D	3548.288	3228.887
SC-19	3455.73	3171.26
SC-20	3330.37	3287.18
SC-21	3113.03	3585.02
SC-22	2849.83	3877.16
SC-23	2833.04	4035.76

UTILITY LOCATIONS
Utility locations are approximate as provided by utility company location plans. Verify and field locate prior to any excavation, grading, or drilling. Utility Notification Center must be called two business days in advance, 1-800-922-1987. Utility Companies who are not members of the Utility Notification Center shall be contacted directly by the Contractor.

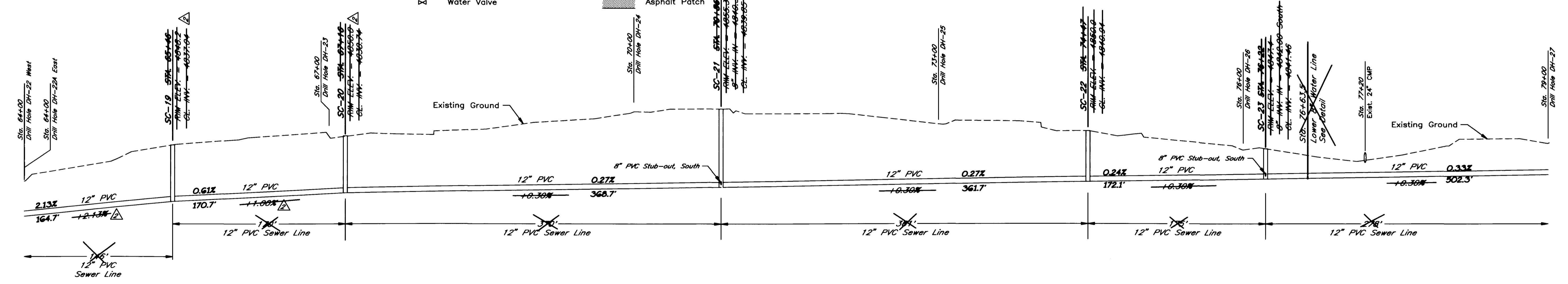
NOTES:
1. All construction shall conform and adhere to the City of Grand Junction, Department of Public Works and Utilities, Engineering Section, "Standard Specifications for Construction of Water Lines, Sanitary Sewers, Storm Drains, Underdrains, and Irrigation Systems", "Detailed Street Construction Specifications" and "Standard Details."

- LEGEND**
- Mesa County Survey Monument
 - U.S.G.S. Benchmark
 - Found Survey Monument
 - Survey Control Point
 - Survey Line
 - Power Pole
 - Electric Vault
 - Power Pole Guy Wire
 - Overhead Power Line
 - Buried Electric Line
 - Buried Gas Line
 - Water Meter
 - Water Valve
 - Fire Hydrant
 - Buried Water Line
 - Telephone Vault
 - Telephone Pedestal
 - Buried Telephone
 - Sanitary Manhole
 - Sanitary Sewer Line
 - Mail Box
 - Sign Post
 - Fence
 - Drill Hole
 - Existing Asphalt
 - Asphalt Patch

SEWER LINE PLAN
Scale: 1"=50'



NOTE:
1. Stationing is on the sewer line.
2. Project Bench Mark U.S.G.S., El. 4777.00 See Sheet 4 of 9

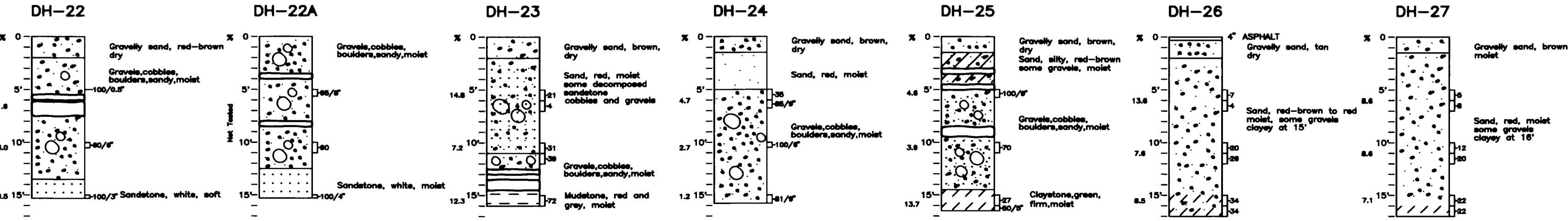


64+00	4841.0	4833.94	4842.9	4834.47	4843.8	4835.01	4844.6	4835.54	4846.3	4836.07	4847.5	4836.60	4848.3	4837.08	4849.7	4837.53	4849.1	4837.58	4849.7	4837.83	4850.0	4838.08	4850.4	4838.83	4849.9	4838.58	4850.1	4838.77	4850.4	4838.85	4850.3	4838.92	4850.2	4839.00	4851.0	4839.07	4851.2	4839.15	4851.9	4839.22	4852.6	4839.30	4852.9	4839.37	4839.45	4853.2	4839.52	4853.8	4839.52	4854.7	4839.60	4854.9	4839.67	4855.3	4839.75	4855.3	4839.82	4855.8	4839.90	4856.3	4840.0	4856.4	4840.12	4856.4	4840.20	4856.5	4840.27	4856.9	4840.35	4856.9	4840.42	4857.3	4840.50	4857.3	4840.57	4857.9	4840.65	4857.9	4840.72	4858.2	4840.80	4858.2	4840.87	4858.3	4840.95	4858.3	4841.02	4858.5	4841.10	4858.5	4841.17	4841.25	4858.8	4841.32	4858.8	4841.40	4859.0	4841.47	4859.0	4841.55	4859.0	4841.62	4859.2	4841.70	4859.2	4841.77	4859.3	4841.85	4859.3	4841.92	4859.3	4842.00	4859.4	4842.07	4859.4	4842.15	4859.4	4842.22	4859.4	4842.30	4859.4
-------	--------	---------	--------	---------	--------	---------	--------	---------	--------	---------	--------	---------	--------	---------	--------	---------	--------	---------	--------	---------	--------	---------	--------	---------	--------	---------	--------	---------	--------	---------	--------	---------	--------	---------	--------	---------	--------	---------	--------	---------	--------	---------	--------	---------	---------	--------	---------	--------	---------	--------	---------	--------	---------	--------	---------	--------	---------	--------	---------	--------	--------	--------	---------	--------	---------	--------	---------	--------	---------	--------	---------	--------	---------	--------	---------	--------	---------	--------	---------	--------	---------	--------	---------	--------	---------	--------	---------	--------	---------	--------	---------	---------	--------	---------	--------	---------	--------	---------	--------	---------	--------	---------	--------	---------	--------	---------	--------	---------	--------	---------	--------	---------	--------	---------	--------	---------	--------	---------	--------	---------	--------

SEWER LINE PROFILE
Horiz. 1"=50'
Vert. 1"=10'

AS CONSTRUCTED
1-15-95

DRILL HOLE LOGS



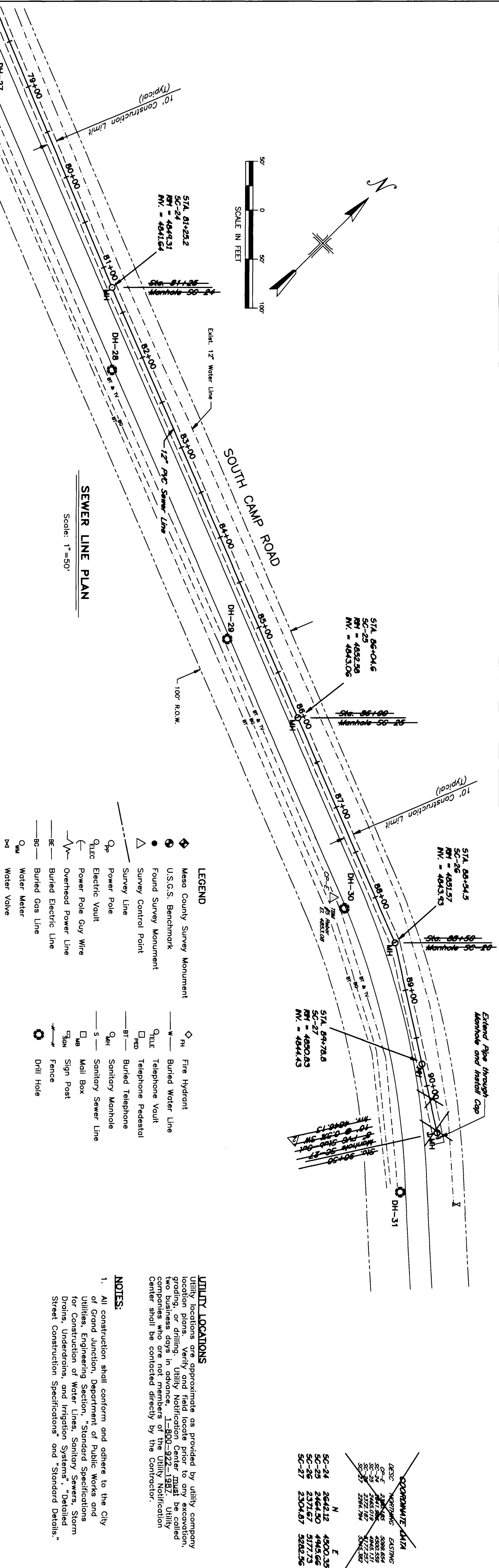
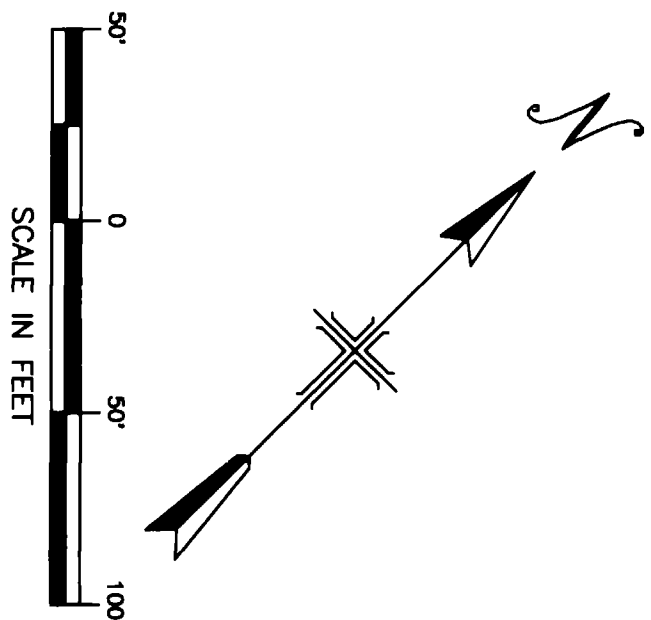
- Legend**
- Water Table
 - Blows/Foot Blows/Distance Std. Penetration Test
 - Moisture Content
 - Water Level Measured on 8/27/93
 - SILT
 - CLAY
 - SAND
 - MUONSTONE
 - GRAVELS
 - SANDSTONE
 - BOULDER
 - COBBLES

WESTERN CONSULTING ENGINEERS / LAND SURVEYORS
ENGINEERS, INC. 2120 Hwy 8 & 25, Grand Junction, CO (970)42-5882

PREPARED FOR
CITY OF GRAND JUNCTION
SOUTH CAMP SEWER LINE
PLAN AND PROFILE
Sta. 64+00 to Sta. 79+00
MESA COUNTY, COLORADO

DESIGN	Irg	DRAWN	S.N.B.	SHEET	6
CHECKED	W.E.I.	APPROVED	W.E.I.	OF	6
DATE	8/15/93	WEI DWG. NO.	3486	BY	10

NO.	DATE	REVISION - DESCRIPTION	BY
2	12/28/93	Alignment & Slope Changes W. of SC-20	WEL
1	12/28/93	General	Irg



SEWER LINE PLAN
Scale: 1"=50'

- LEGEND**
- ◆ MESA COUNTY SURVEY MONUMENT
 - U.S.G.S. BENCHMARK
 - FOUND SURVEY MONUMENT
 - △ SURVEY CONTROL POINT
 - SURVEY LINE
 - _{OP} POWER POLE
 - _{ELEC} ELECTRIC VAULT
 - _{PG} POWER POLE GUY WIRE
 - _{OV} OVERHEAD POWER LINE
 - _{BE} BURIED ELECTRIC LINE
 - _{BG} BURIED GAS LINE
 - _{WM} WATER METER
 - _{WV} WATER VALVE
 - ◆ FH FIRE HYDRANT
 - _W BURIED WATER LINE
 - _{TE} TELEPHONE VAULT
 - _{FED} TELEPHONE PEDAESTAL
 - _{BT} BURIED TELEPHONE
 - _{SM} SANITARY MANHOLE
 - _{SB} SANITARY SEWER LINE
 - _{MB} MAIL BOX
 - _{SN} SIGN POST
 - _F FENCE
 - _{DH} DRILL HOLE

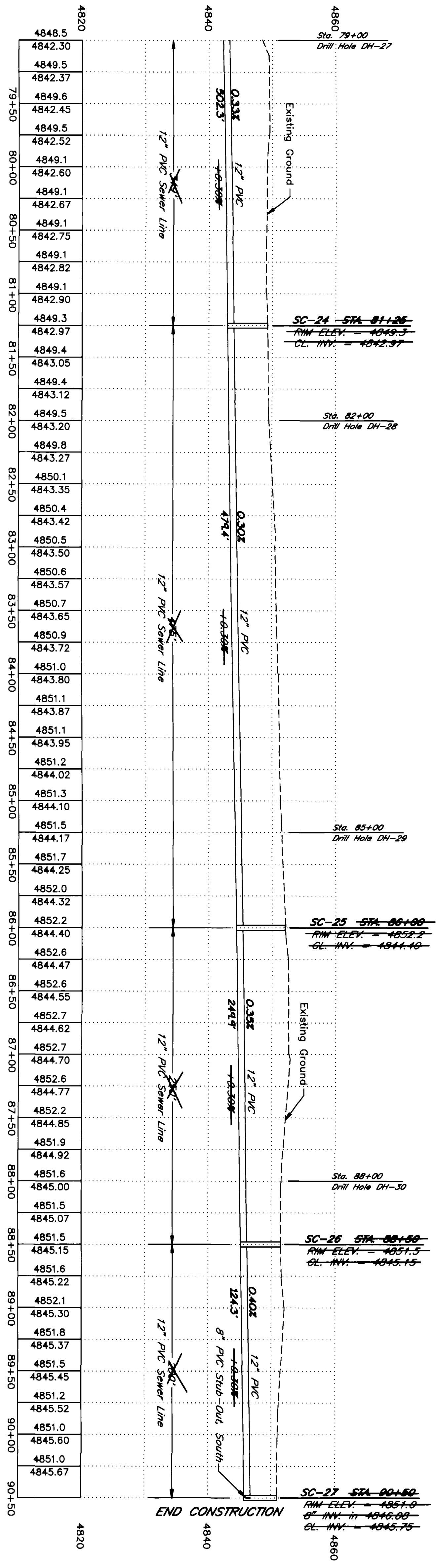
UTILITY LOCATIONS
Utility locations were approximately as provided by utility company. Locations were from field locate prior to any excavation, grading, or drilling. Utility Notification Center must be called two business days in advance. 1-800-922-1987. Utility companies who are not members of the Utility Notification Center shall be contacted directly by the Contractor.

NOTES:
1. All construction shall conform and adhere to the City of Grand Junction, Department of Public Works and Utilities, Engineering Section, Standard Specifications for Construction of Water Lines, Sanitary Sewers, Storm Drains, Underdrains and Irrigation Systems, "Detailed Street Construction Specifications" and "Standard Details."

COORDINATE DATA

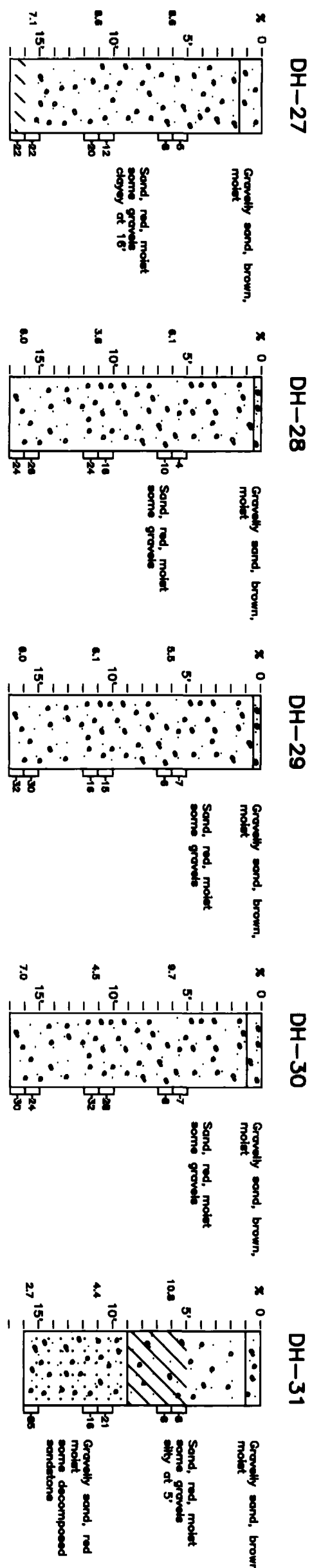
LINE	NORTHING	EASTING
SC-24	2642.12	4800.35
SC-25	2642.12	4800.35
SC-26	2304.87	5177.73
SC-27	2304.87	5282.56

NOTE:
1. Stationing is on the sewer line.
2. Project Bench Mark U.S.G.S. El. 4777.00 See Sheet 4 of 9



SEWER LINE PROFILE
Horiz. 1"=50'
Vert. 1"=10'

AS CONSTRUCTED
1-15-95



DRILL HOLE LOGS

- Legend**
- STUT
 - CLAY
 - SAND
 - MUDSTONE
 - WATER TABLE
 - BLOWS/FOOT
 - MOISTURE CONTENT
 - STANDARD PENETRATION TEST
 - WATER LEVEL MEASURED ON 8/27/93

WESTERN CONSULTING ENGINEERS / LAND SURVEYORS
PREPARED FOR
CITY OF GRAND JUNCTION
SOUTH CAMP SEWER LINE
PLAN AND PROFILE
Sta. 48+00 to Sta. 64+00
MESA COUNTY, COLORADO

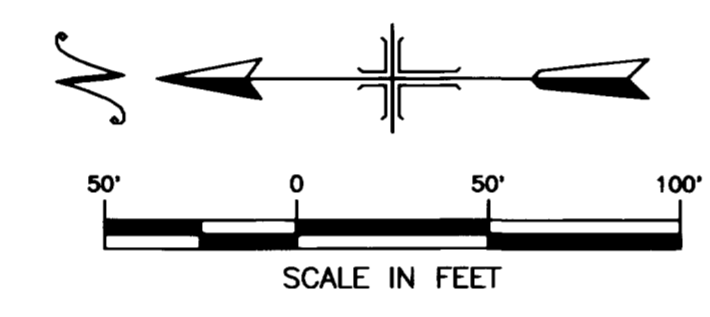
NO.	DATE	REVISION - DESCRIPTION	BY
1	12/24/94	ADD STA. 48+00 TO SC-27	MS
2	1/20/95	OWNER	MS
7	8/27/93		MS

DESIGN	DRAWN	CHECKED	APPROVED
IRg	S.N.B.	W.E.L.	W.E.L.

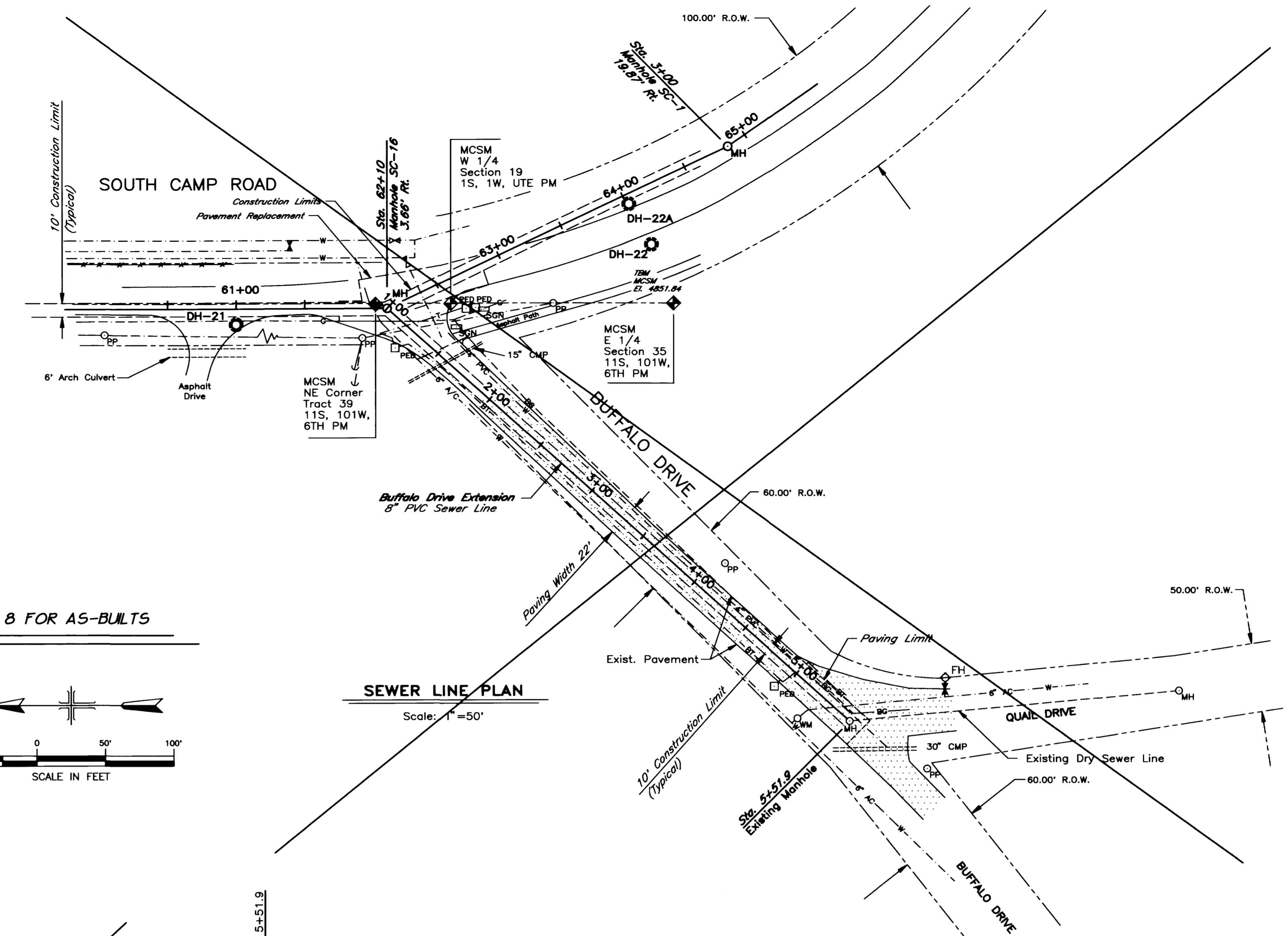
DATE: 8/15/93
SHEET 7 OF 10
WBI DWG. NO. 3486

- LEGEND**
- ◆ Mesa County Survey Monument
 - U.S.G.S. Benchmark
 - Found Survey Monument
 - △ Survey Control Point
 - Survey Line
 - _{PP} Power Pole
 - _{ELEC} Electric Vault
 - Power Pole Guy Wire
 - Overhead Power Line
 - BE Buried Electric Line
 - BG Buried Gas Line
 - _{WM} Water Meter
 - ⊠ Water Valve
 - ◇_{FH} Fire Hydrant
 - W Buried Water Line
 - _{ELE} Telephone Vault
 - _{PEB} Telephone Pedestal
 - BT Buried Telephone
 - _{MH} Sanitary Manhole
 - S Sanitary Sewer Line
 - SON Sign Post
 - Fence
 - ⊙ Drill Hole

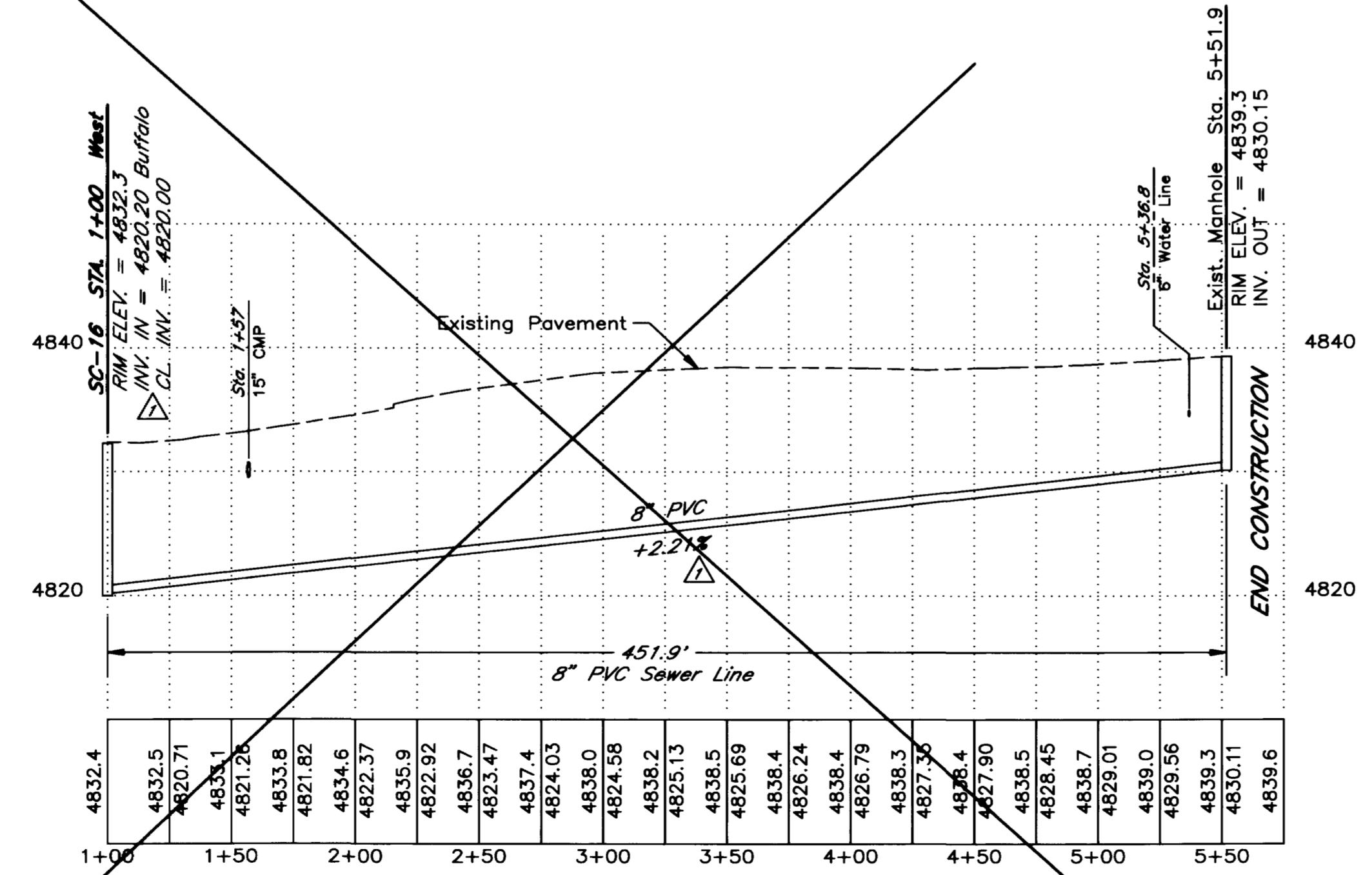
SEE SHEET 8 FOR AS-BUILTS



SEWER LINE PLAN
Scale: 1"=50'



NOTE:
1. Stationing is on the sewer line.
2. Project Bench Mark U.S.G.S., El. 4777.00 See Sheet 4 of 9



SEWER LINE PROFILE
Horiz. 1"=50'
Vert. 1"=10'

UTILITY LOCATIONS
Utility locations are approximate as provided by utility company location plans. Verify and field locate prior to any excavation, grading, or drilling. Utility Notification Center must be called two business days in advance, 1-800-922-1987.

NOTES:
1. All construction shall conform and adhere to the City of Grand Junction, Department of Public Works and Utilities, Engineering Section, "Standard Specifications for Construction of Water Lines, Sanitary Sewers, Storm Drainage, and Irrigation Systems", "Detailed Street Construction Specifications" and "Standard Details."

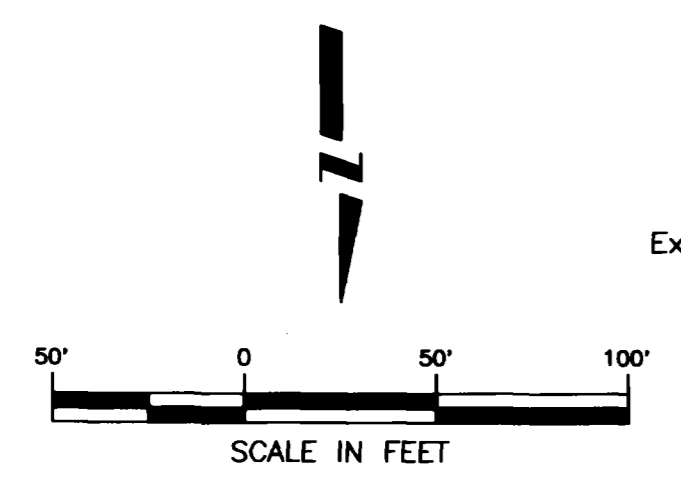
AS CONSTRUCTED

1-15-95

DESIGN		Irg		DRAWN	S.N.B.		SHEET	8	OF	9
		CHECKED			W.E.I.					
DATE		8/15/93		WEI DWG. NO.		3486				

WESTERN ENGINEERS, INC. CONSULTING ENGINEERS / LAND SURVEYORS
2100 Hwy 8 & 50, Grand Junction, CO 81502-2802

PREPARED FOR
CITY OF GRAND JUNCTION
SOUTH CAMP SEWER LINE
PLAN AND PROFILE
Buffalo Extension
MESA COUNTY, COLORADO



UTILITY LOCATIONS

Utility locations are approximate as provided by utility company location plans. Verify and field locate prior to any excavation, grading, or drilling. Utility Notification Center must be called two business days in advance, 1-800-922-1987.

NOTES:

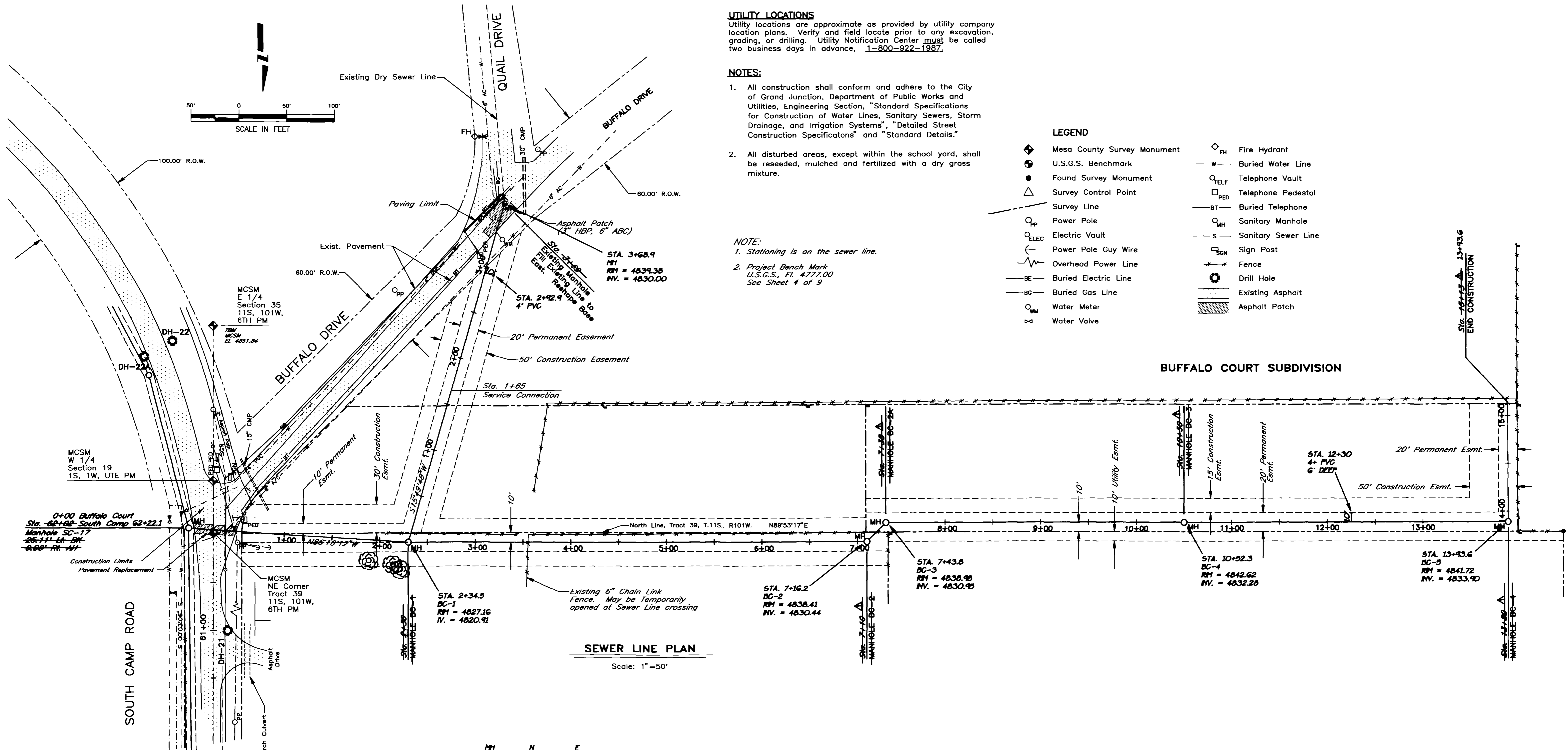
- All construction shall conform and adhere to the City of Grand Junction, Department of Public Works and Utilities, Engineering Section, "Standard Specifications for Construction of Water Lines, Sanitary Sewers, Storm Drainage, and Irrigation Systems", "Detailed Street Construction Specifications" and "Standard Details."
- All disturbed areas, except within the school yard, shall be reseeded, mulched and fertilized with a dry grass mixture.

NOTE:

- Stationing is on the sewer line.
- Project Bench Mark U.S.G.S., El. 4777.00 See Sheet 4 of 9

LEGEND

- ◆ Mesa County Survey Monument
- U.S.G.S. Benchmark
- Found Survey Monument
- △ Survey Control Point
- Survey Line
- _{PP} Power Pole
- _{ELEC} Electric Vault
- Power Pole Guy Wire
- Overhead Power Line
- _{BE} Buried Electric Line
- _{BG} Buried Gas Line
- _{WM} Water Meter
- ◇ Water Valve
- ◇_{FH} Fire Hydrant
- _W Buried Water Line
- _{TELE} Telephone Vault
- _{PED} Telephone Pedestal
- _{BT} Buried Telephone
- _{MH} Sanitary Manhole
- _S Sanitary Sewer Line
- _{SPN} Sign Post
- Fence
- Drill Hole
- Existing Asphalt
- Asphalt Patch



SEWER LINE PLAN
Scale: 1"=50'

MH	N	E
SC-17	3759.80	3057.12
BC-1	3775.74	2823.16
BC-2	3774.54	2341.42
BC-3	3735.56	2321.35
BC-4	3753.95	2012.86
BC-5	3752.65	1671.55

AS CONSTRUCTED
1-15-95

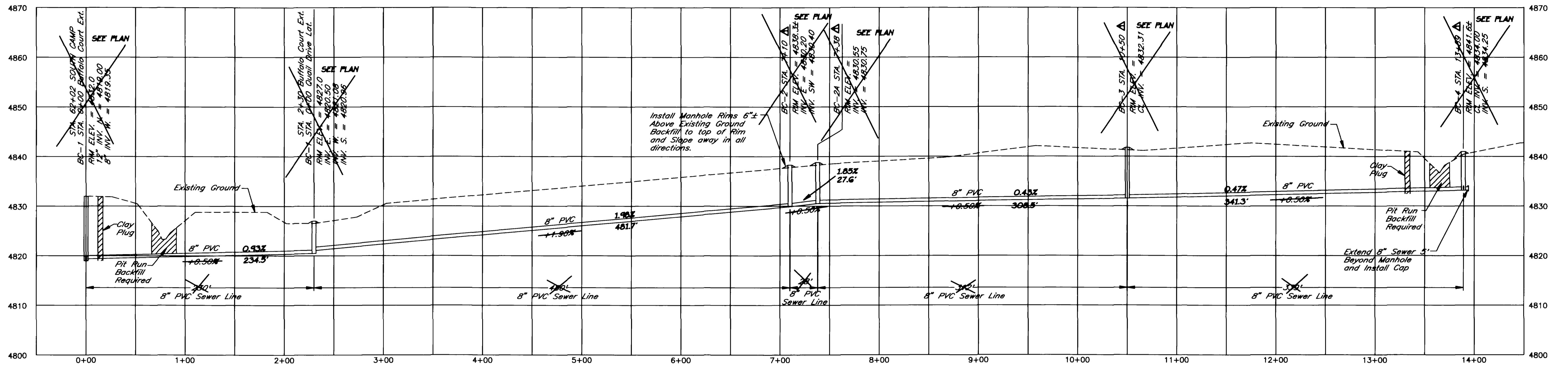
REVISION	DESCRIPTION	DATE	DRAWN BY	C.A.K.	DATE	01/04/94
REVISION	SEWER ADJUSTMENT	4/8/94	CHECKED BY	T.K.H.	DATE	01/04/94
REVISION			APPROVED BY	T.K.H.	DATE	01/04/94
REVISION			FIELD BOOK NO.		PAGE	

SCALE	
PLAN	PROFILE
HORIZ. 1"=20'	HORIZ. _____
VERT. _____	VERT. _____

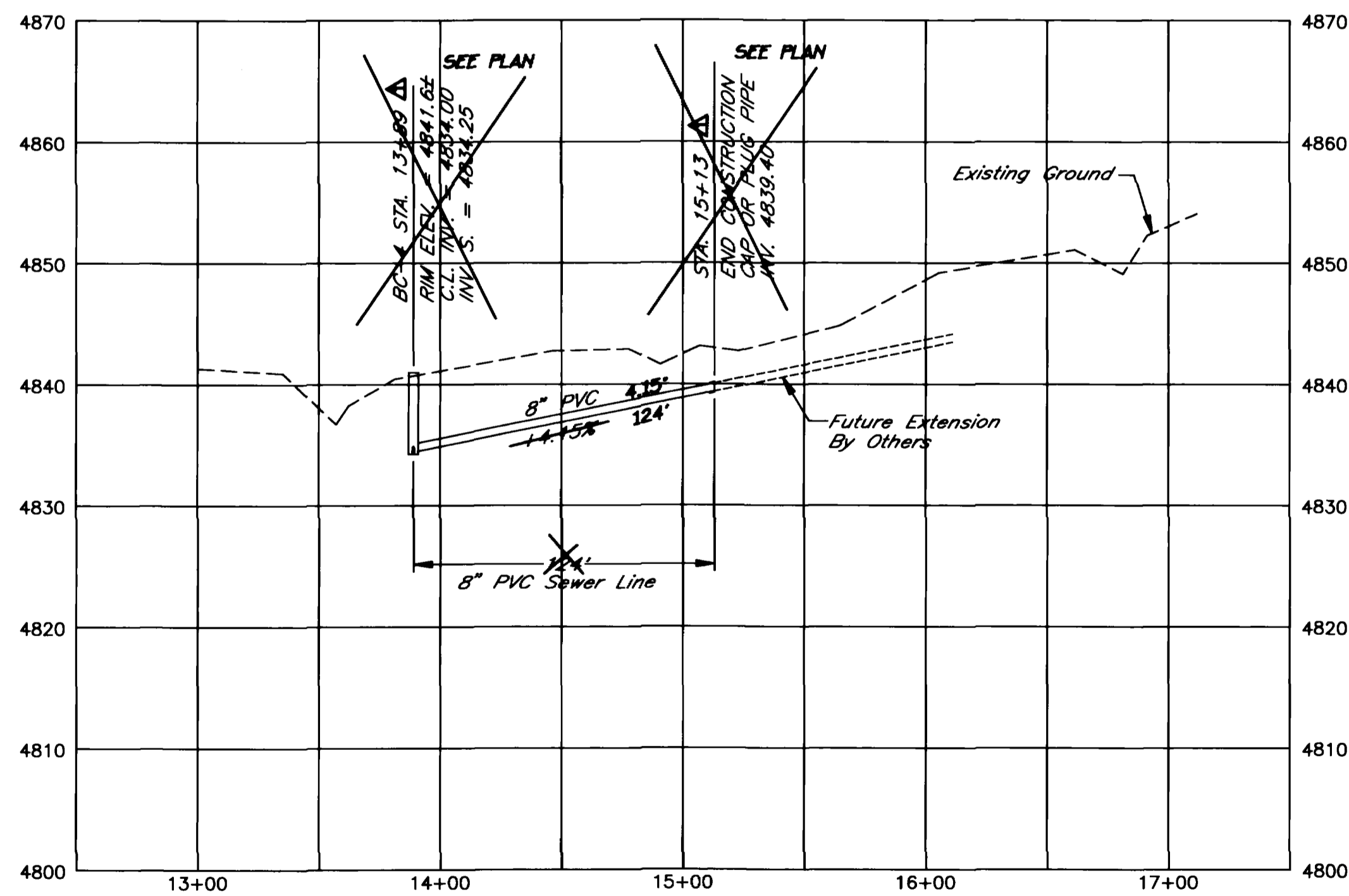
DEPARTMENT OF PUBLIC WORKS AND UTILITIES
ENGINEERING DIVISION
CITY OF GRAND JUNCTION, COLORADO

SOUTH CAMP SEWER LINE
BUFFALO CT. & QUAIL DR. LATERALS
Plan Sheet

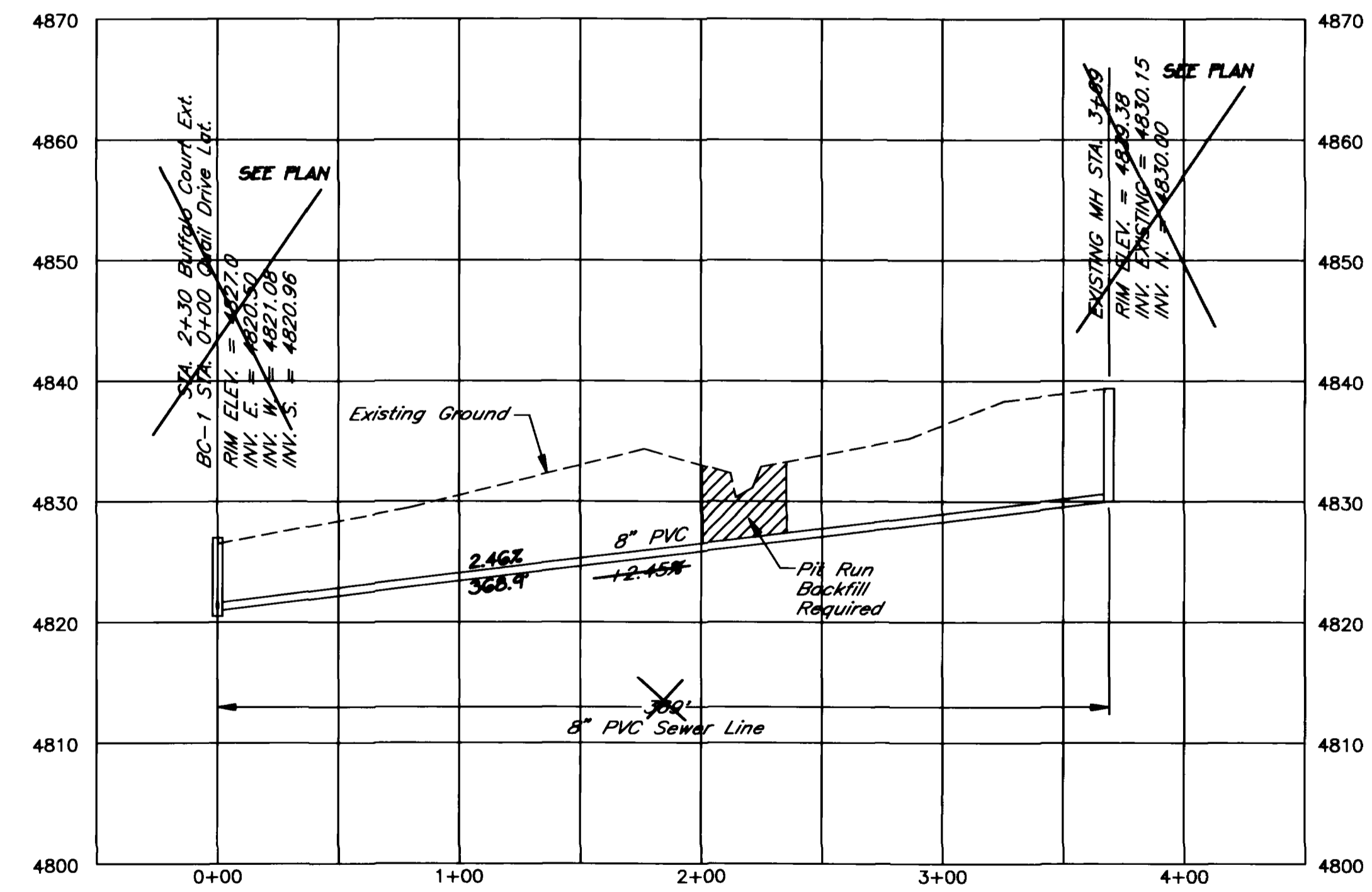
SHEET NO.	8
OF	10
FILE NO.	99322.DWG



BUFFALO COURT EXTENSION



BUFFALO COURT EXTENSION



QUAIL DRIVE LATERAL

AS CONSTRUCTED

1-15-95

REVISION	DESCRIPTION	DATE	DRAWN BY	C.A.K.	DATE	01/04/94
REVISION			CHECKED BY	T.K.H.	DATE	01/04/94
REVISION			APPROVED BY	T.K.H.	DATE	01/04/94
REVISION			FIELD BOOK NO.		PAGE	

SCALE	
PLAN	PROFILE
HORIZ. 1"=50'	HORIZ. 1"=50'
	VERT. 1"=10'

DEPARTMENT OF PUBLIC WORKS AND UTILITIES
ENGINEERING DIVISION
CITY OF GRAND JUNCTION, COLORADO

SOUTH CAMP SEWER LINE
BUFFALO CT. & QUAIL DR. LATERALS
Profile Sheet

SHEET NO.	9
OF	10
FILE NO.	99322.DWG