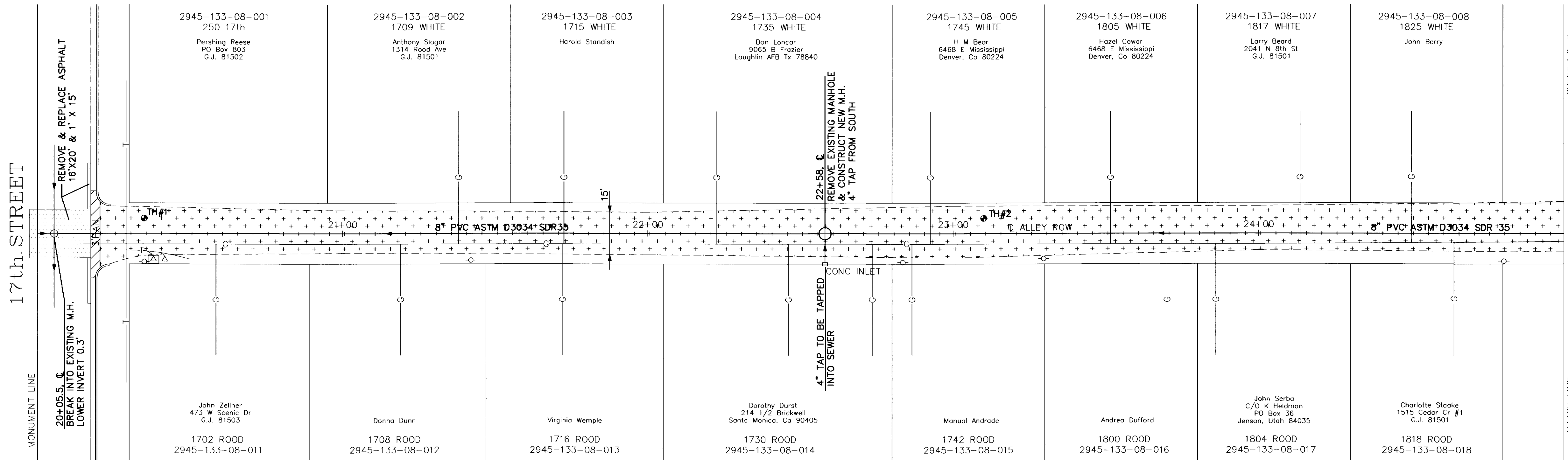
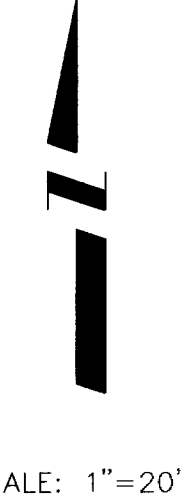


WHITE AVENUE



17th. STREET

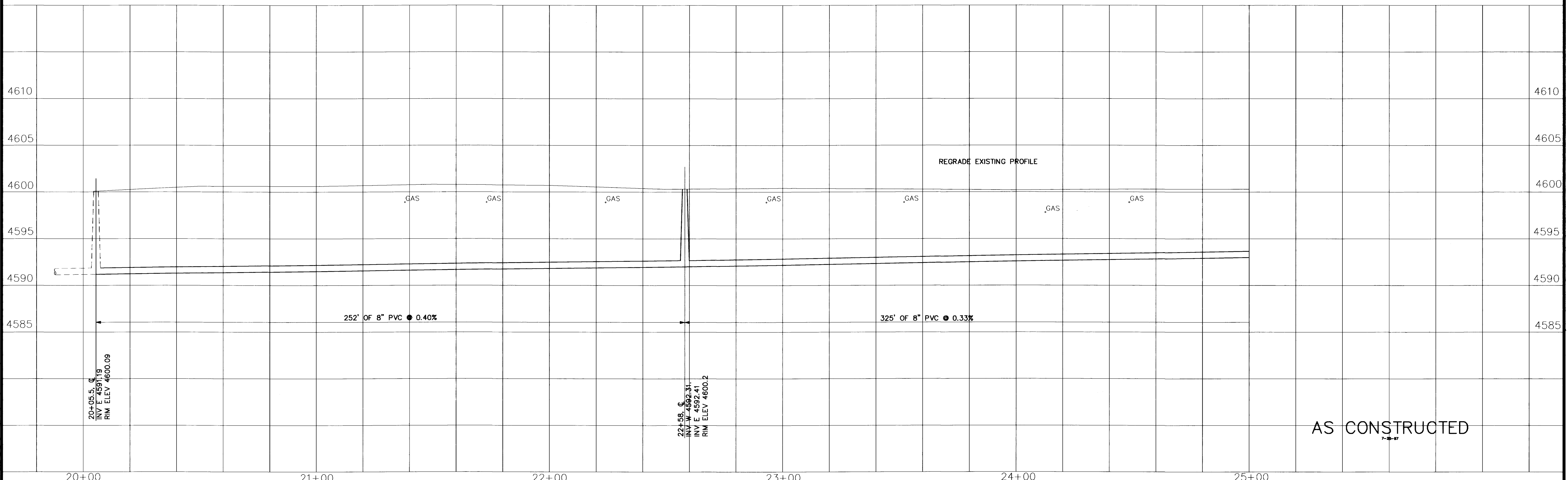
SHEET NO. 7

MATCH LINE

ROAD AVENUE

NOTE: EXISTING GRAVEL SURFACE-NATIVE BACKFILL MATERIAL PLACE 12" AGGREGATE BASE COURSE CLASS 6

TEST HOLES: #1 @ 20+35, 5' LT. #2 @ 23+10, 5' LT.



AS CONSTRUCTED

Table with columns for REVISION, DESCRIPTION, and DATE.

DRAWN BY LESLEY DATE 7/89 CHECKED BY J.J.B. DATE 7/89 APPROVED BY J.J.B. DATE 7/89 FILED BOOK NO. PAGE

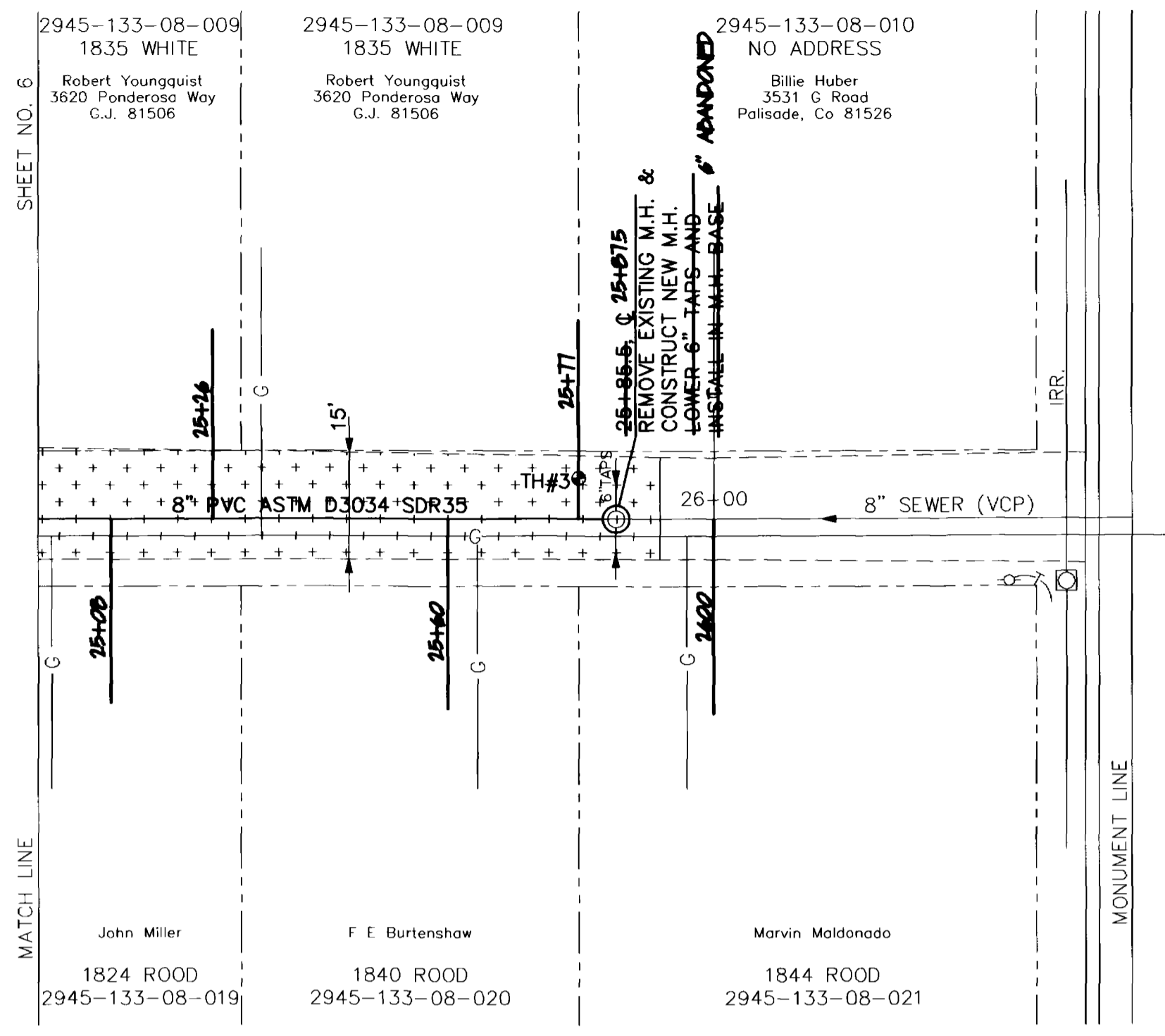
SCALE PLAN 1"=20' PROFILE 1"=20' HORIZ. 1"=20' VERT. 1"=5'

DEPARTMENT OF PUBLIC WORKS AND UTILITIES ENGINEERING DIVISION CITY OF GRAND JUNCTION, COLORADO

SANITARY SEWER RECONSTRUCTION 1989 Alley 17th. Street to 19th. Street Between Road Avenue & White Avenue

SHEET NO. 6 OF 17 FILE NO.

WHITE AVENUE



19th. STREET

SCALE: 1"=20'

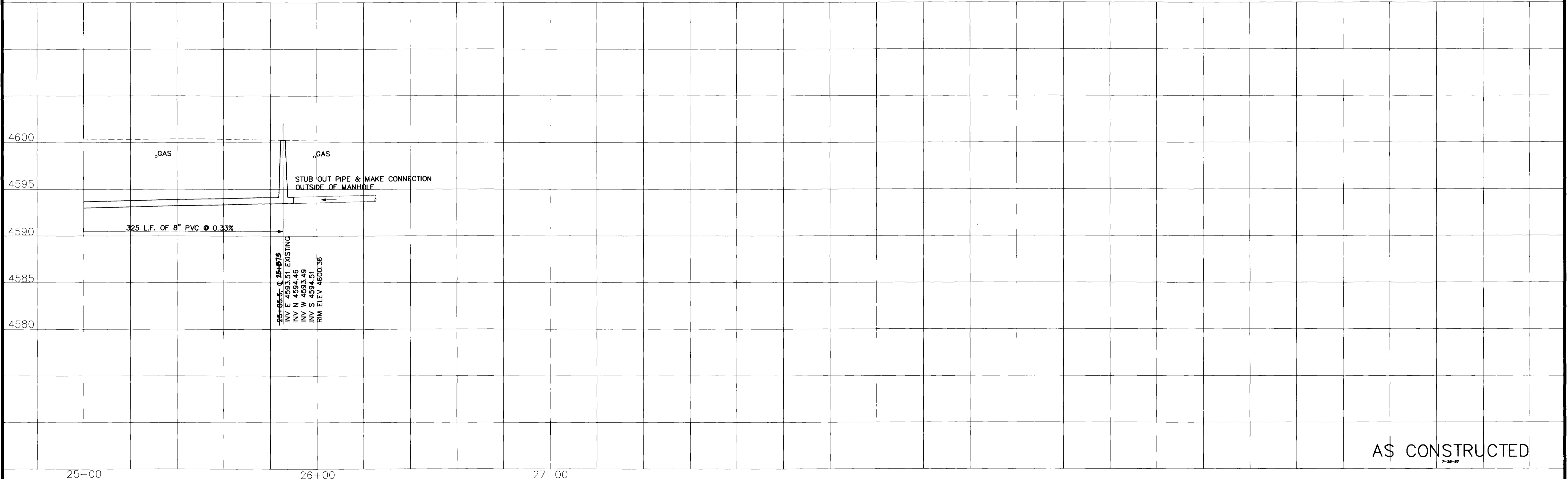
GENERAL NOTES

1. [Symbol] DENOTES ASPHALT REMOVAL AND REPLACEMENT WITH AGGREGATE BASE COURSE
2. [Symbol] DENOTES ASPHALT REMOVAL AND REPLACEMENT
3. [Symbol] DENOTES AGGREGATE BASE COURSE SURFACE
4. [Symbol] DENOTES CONCRETE REMOVAL AND REPLACEMENT
5. ALL EXPOSED ENDS OF SEWER PIPES WHICH ARE TO BE ABANDONED ARE TO BE PLUGGED WITH CONCRETE.
6. SHADED AREAS DESIGNATE LIMITS OF CONSTRUCTION.

ROOD AVENUE

TEST HOLES: #3 25+80, 6'L.T.

NOTE: EXISTING GRAVEL SURFACE-NATIVE BACKFILL MATERIAL PLACE 12 AGGREGATE BASE COURSE CLASS 6



AS CONSTRUCTED

REVISION	DESCRIPTION	DATE	DRAWN BY	DATE
			Lesley	7/89
			J.J.B.	7/89
			J.J.B.	7/89

SCALE	
PLAN	PROFILE
HORIZ. 1"=20'	HORIZ. 1"=20'
	VERT. 1"=5'

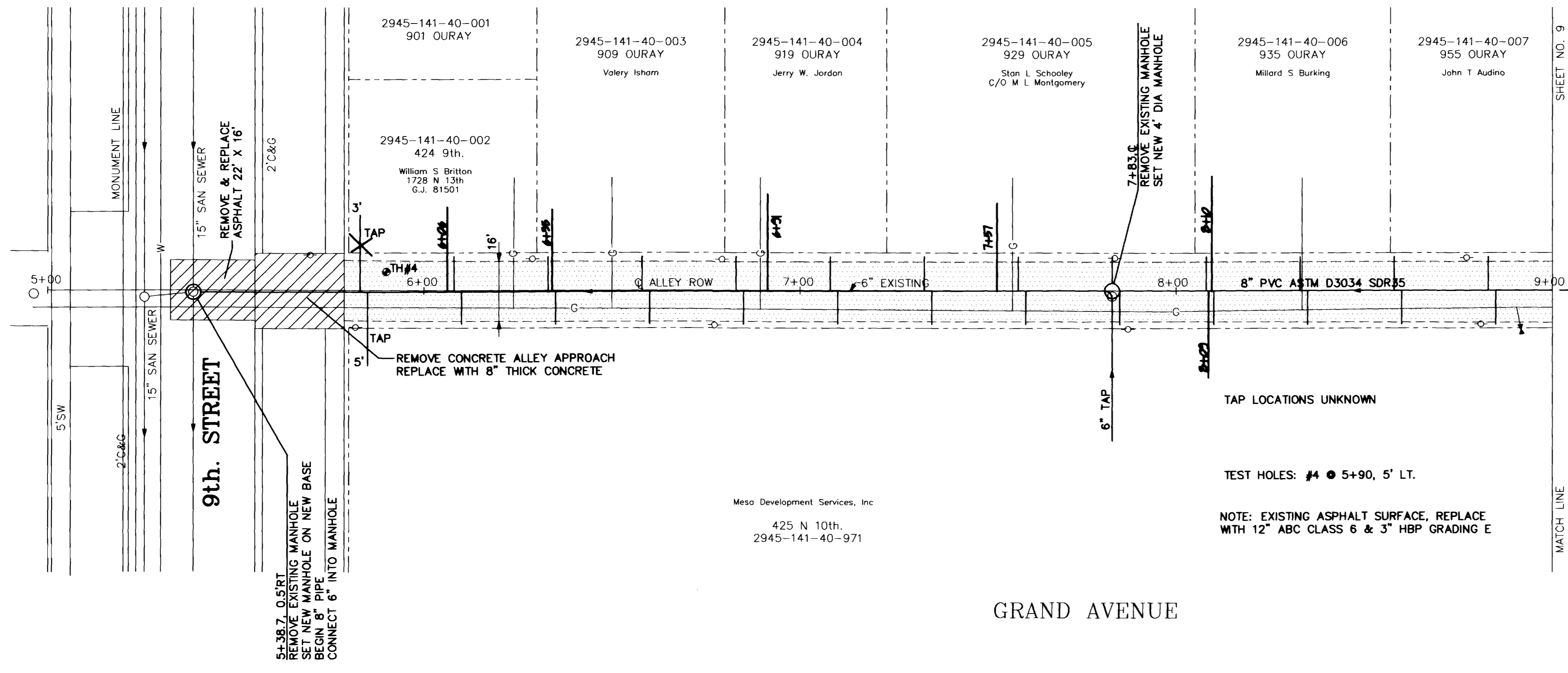
DEPARTMENT OF PUBLIC WORKS AND UTILITIES  
ENGINEERING DIVISION  
CITY OF GRAND JUNCTION, COLORADO

SANITARY SEWER RECONSTRUCTION 1989  
Alley 17th. Street to 19th. Street  
Between Rood Avenue & White Avenue

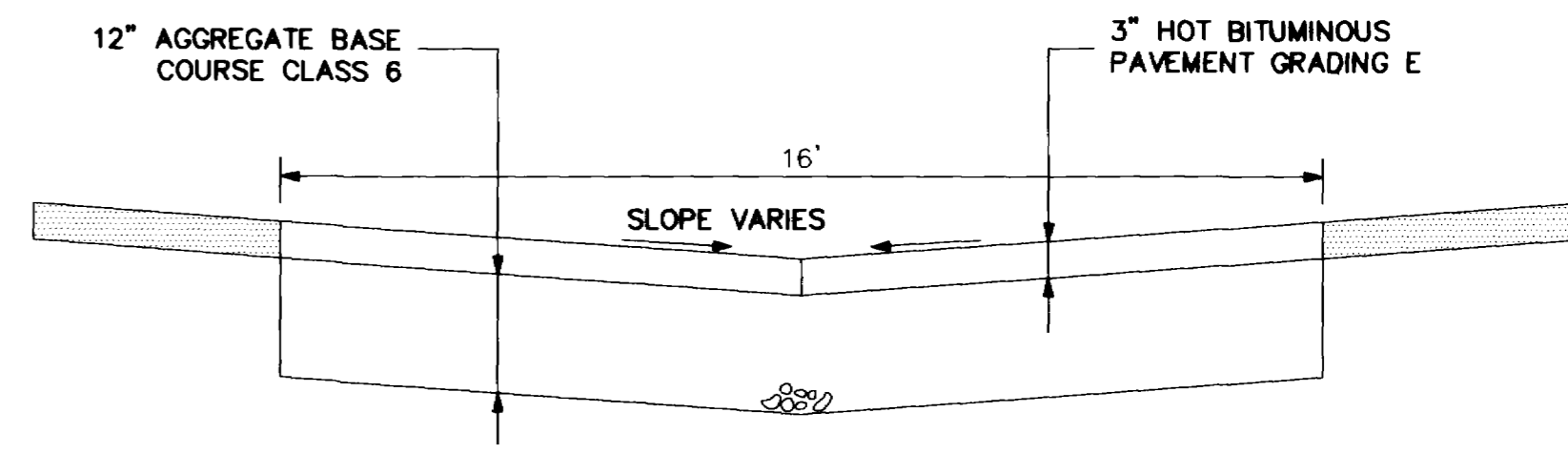
SHEET NO.	8
OF	18
FILE NO.	

OURAY AVENUE

SCALE: 1"=20'

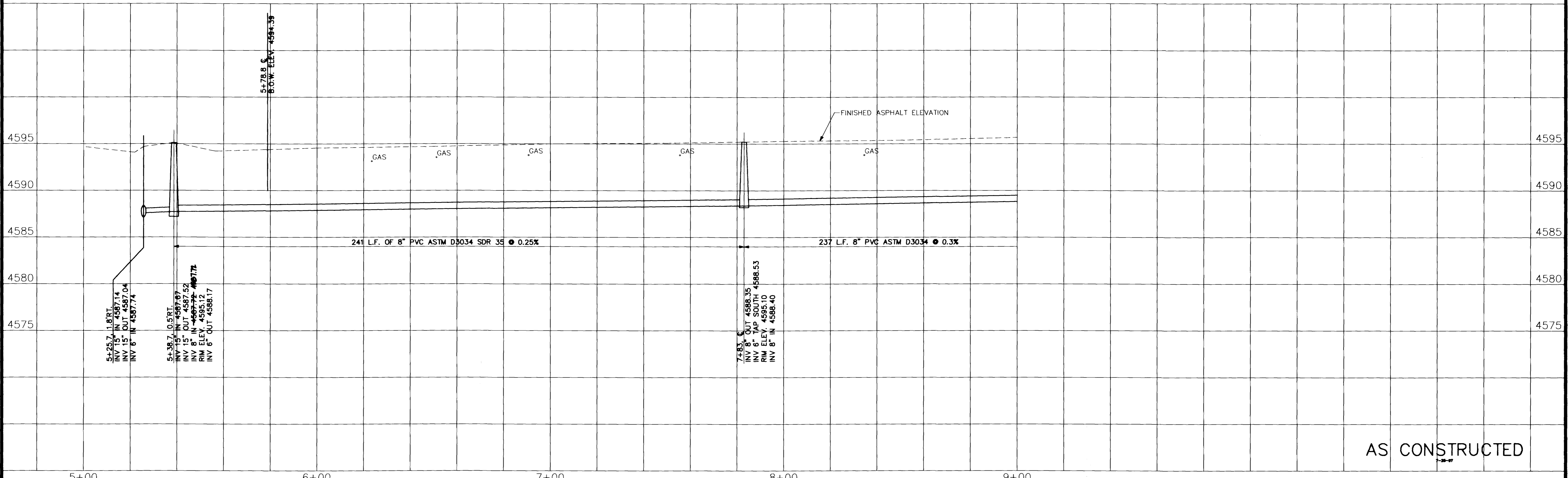


NORTH  
TAPS 3' EAST OF WEST LOT LINE (25' LOTS)  
TAPS 5' EAST OF WEST LOT LINE (25' LOTS)  
SOUTH



TYPICAL SECTION  
9th. TO 10th.

GRAND AVENUE



AS CONSTRUCTED

REVISION	DESCRIPTION	DATE

DRAWN BY Lesley DATE 7/89  
 CHECKED BY J.J.B. DATE 7/89  
 APPROVED BY J.J.B. DATE 7/89  
 FILED BOOK NO. PAGE

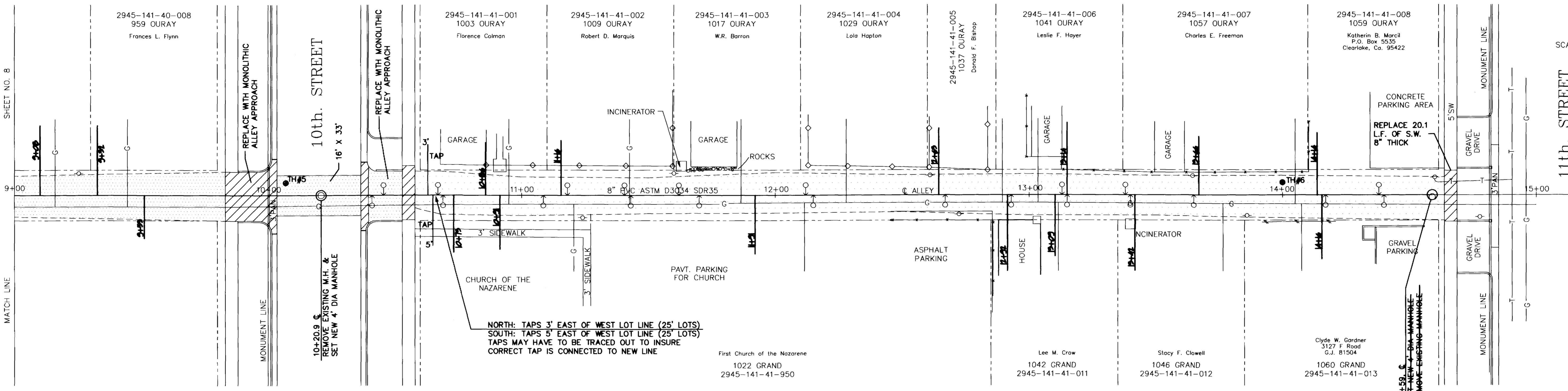
SCALE  
 PLAN PROFILE  
 HORIZ. 1"=20' HORIZ. 1"=20'  
 VERT. 1"=5'

DEPARTMENT OF PUBLIC WORKS AND UTILITIES  
 ENGINEERING DIVISION  
 CITY OF GRAND JUNCTION, COLORADO

SANITARY SEWER RECONSTRUCTION 1989  
 Alley 9th. Street to 11th. Street  
 Between Grand Avenue & Ouray Avenue

SHEET NO. 8  
 OF 18  
 FILE NO.

OURAY AVENUE

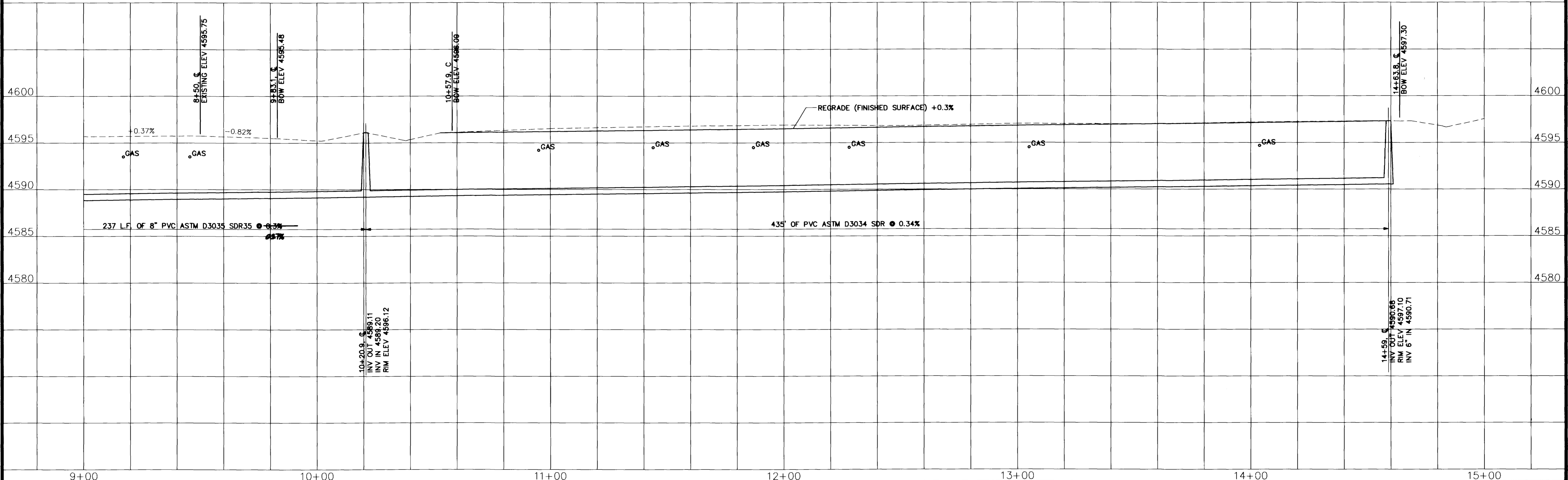


NORTH: TAPS 3' EAST OF WEST LOT LINE (25' LOTS)  
SOUTH: TAPS 5' EAST OF WEST LOT LINE (25' LOTS)  
TAPS MAY HAVE TO BE TRACED OUT TO INSURE  
CORRECT TAP IS CONNECTED TO NEW LINE

GRAND AVENUE

TEST HOLES: #5 @ 10+07, 5' LT.  
#6 @ 14+00, 05' LT.

⊕ DENOTES SERVICES OBSERVED WITH T.V. CAMERA



REVISION	DESCRIPTION	DATE

DRAWN BY: Lesley DATE: 7/89  
 CHECKED BY: J.J.B. DATE: 7/89  
 APPROVED BY: J.J.B. DATE: 7/89  
 FILED BOOK NO. PAGE

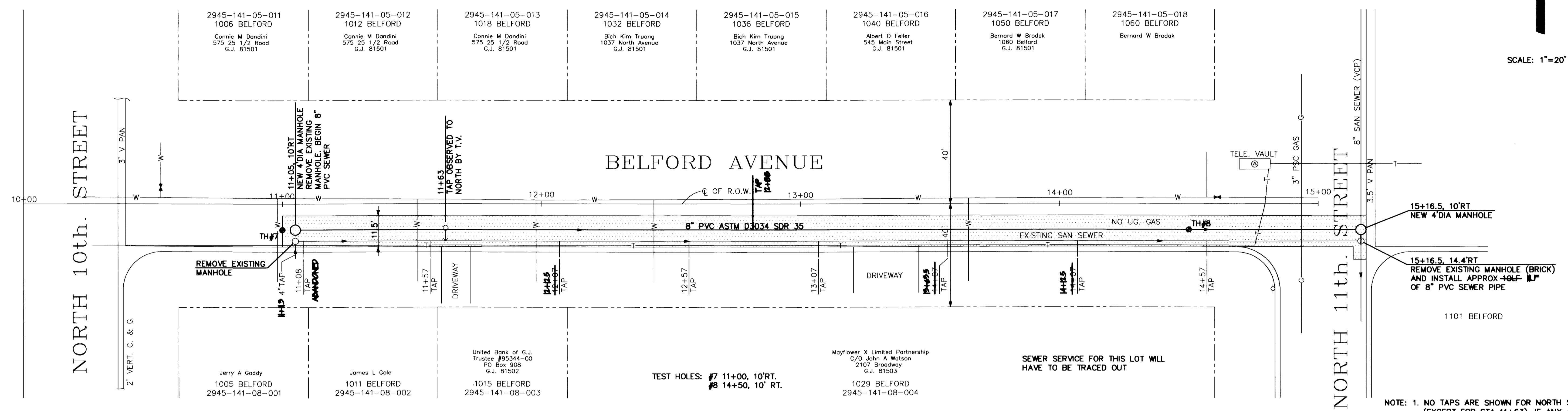
SCALE  
 PLAN: 1"=20'  
 PROFILE: 1"=5'

DEPARTMENT OF PUBLIC WORKS AND UTILITIES  
 ENGINEERING DIVISION  
 CITY OF GRAND JUNCTION, COLORADO

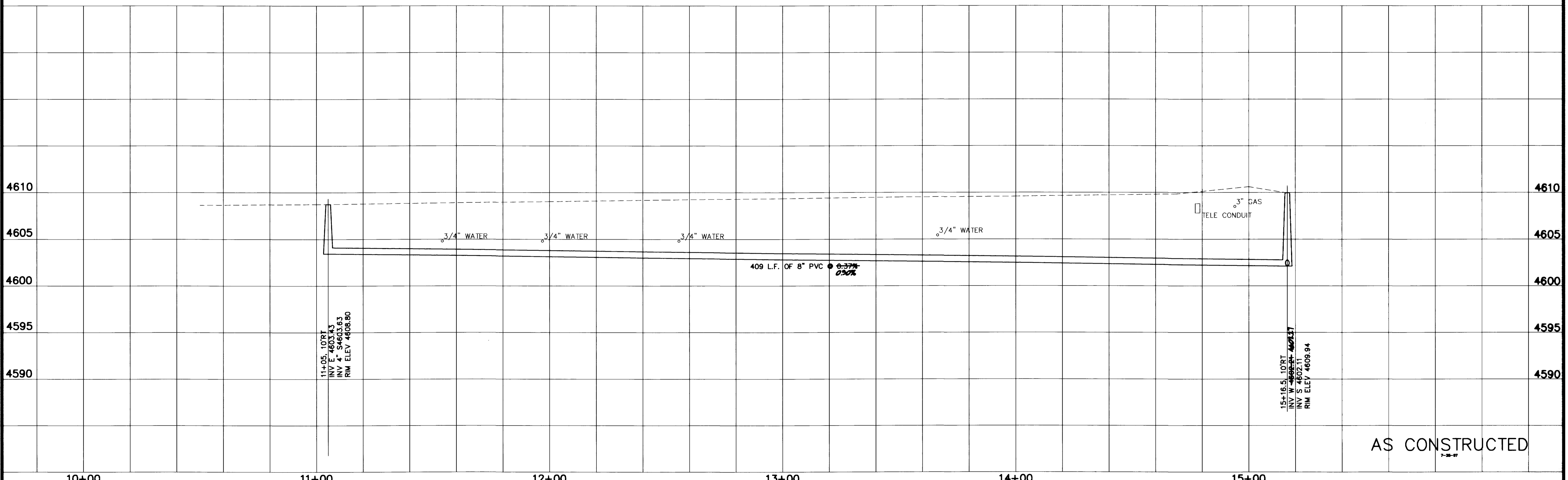
SANITARY SEWER RECONSTRUCTION 1989  
 Alley 9th. to 11th. Streets  
 Between Grand Avenue and Ouray Avenue

SHEET NO. 9  
 OF 18  
 FILE NO.

SCALE: 1"=20'



- NOTE: 1. NO TAPS ARE SHOWN FOR NORTH SIDE OF STREET (EXCEPT FOR STA 11+63). IF ANY ARE ENCOUNTERED THEY SHALL BE CONNECTED TO THE NEW MAIN. WYES FOR THE PROPERTIES TO THE SOUTH ARE SHOWN AS 3' WEST OF EAST PROPERTY LINE, CORRESPONDING STATIONS ARE SHOWN.
2. NO U.G. GAS OR ELECTRICAL



AS CONSTRUCTED

REVISION	DESCRIPTION	DATE

DRAWN BY	N.O.P.	DATE	7/89
CHECKED BY	JJB	DATE	7/89
APPROVED BY	JJB	DATE	7/89
FILED BOOK NO.		PAGE	

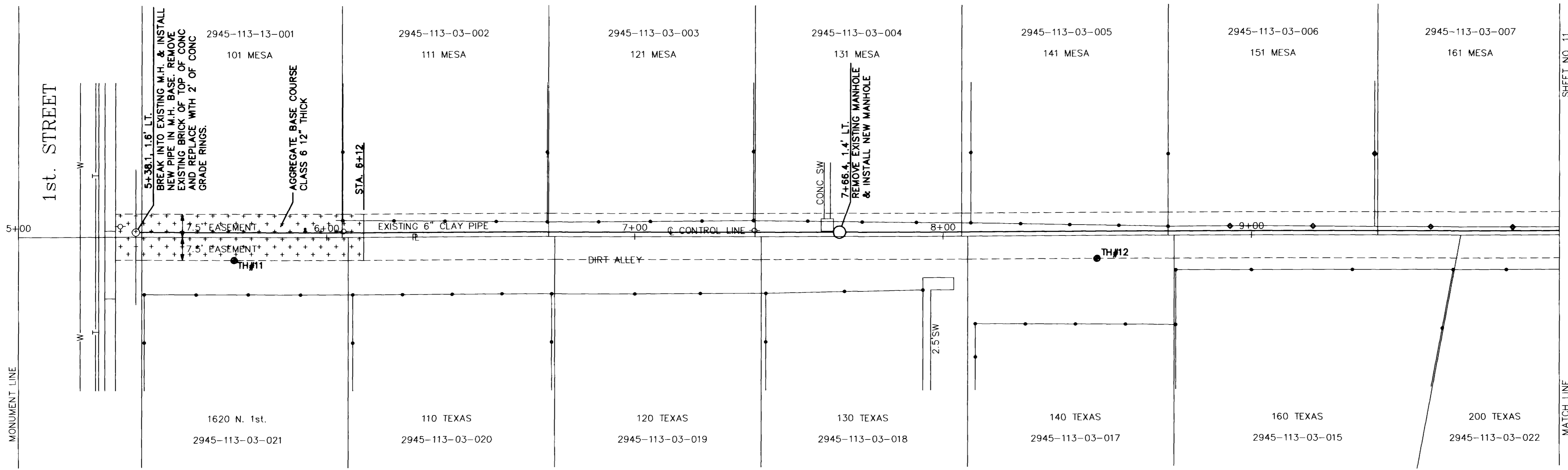
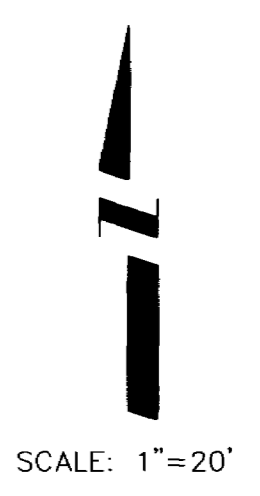
SCALE	
HORIZ.	1"=20'
VERT.	1"=5'

DEPARTMENT OF PUBLIC WORKS AND UTILITIES  
ENGINEERING DIVISION  
CITY OF GRAND JUNCTION, COLORADO

SANITARY SEWER RECONSTRUCTION 1989  
South Side of Belford Avenue  
10th. Street to 11th. Street

SHEET NO.	9
OF	17
FILE NO.	

MESA AVENUE

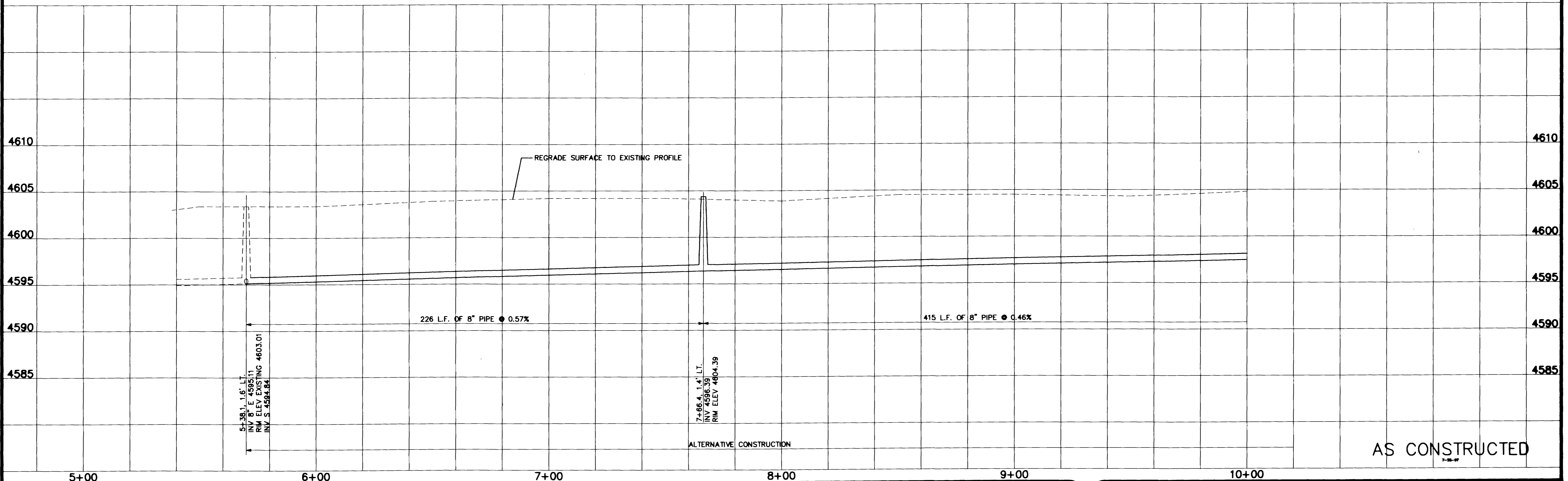


TEXAS AVENUE

NOTE: TAP LOCATIONS UNKNOWN

TEST HOLES: #11 @ 5+70, 7.5' RT.  
#12 @ 8+50, 7.5' RT.

BACKFILL-NATIVE MATERIAL AGGREGATE  
BASE COURSE CLASS 6 IN AREA SHOWN ONLY.



AS CONSTRUCTED

REVISION	DESCRIPTION	DATE

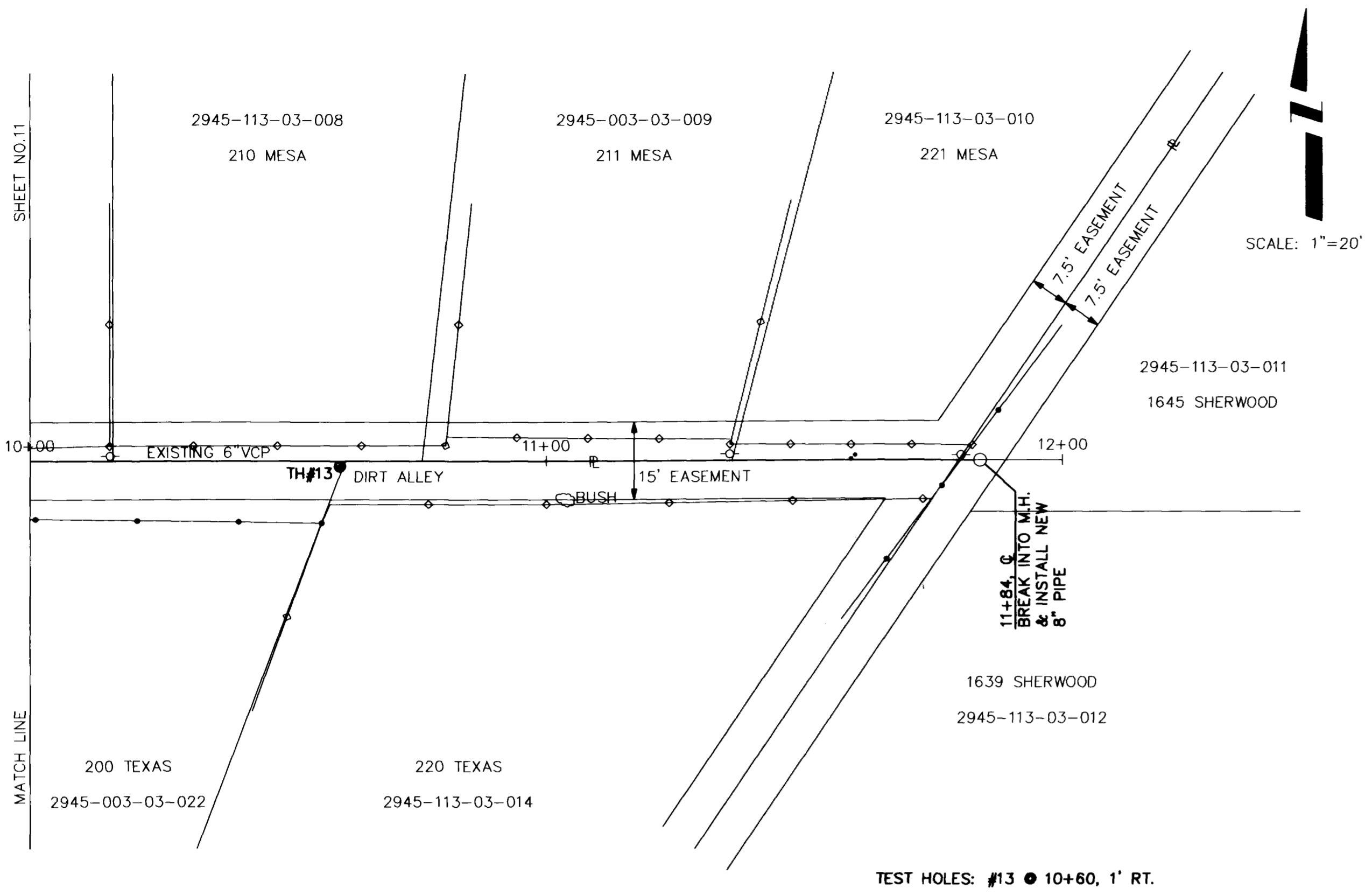
DRAWN BY: Lesley DATE: 7/89  
 CHECKED BY: JJB DATE: 7/89  
 APPROVED BY: JJB DATE: 7/89  
 FILED BOOK NO. PAGE

SCALE	
PLAN	PROFILE
HORIZ. 1"=20'	HORIZ. 1"=20'
	VERT. 1"=5'

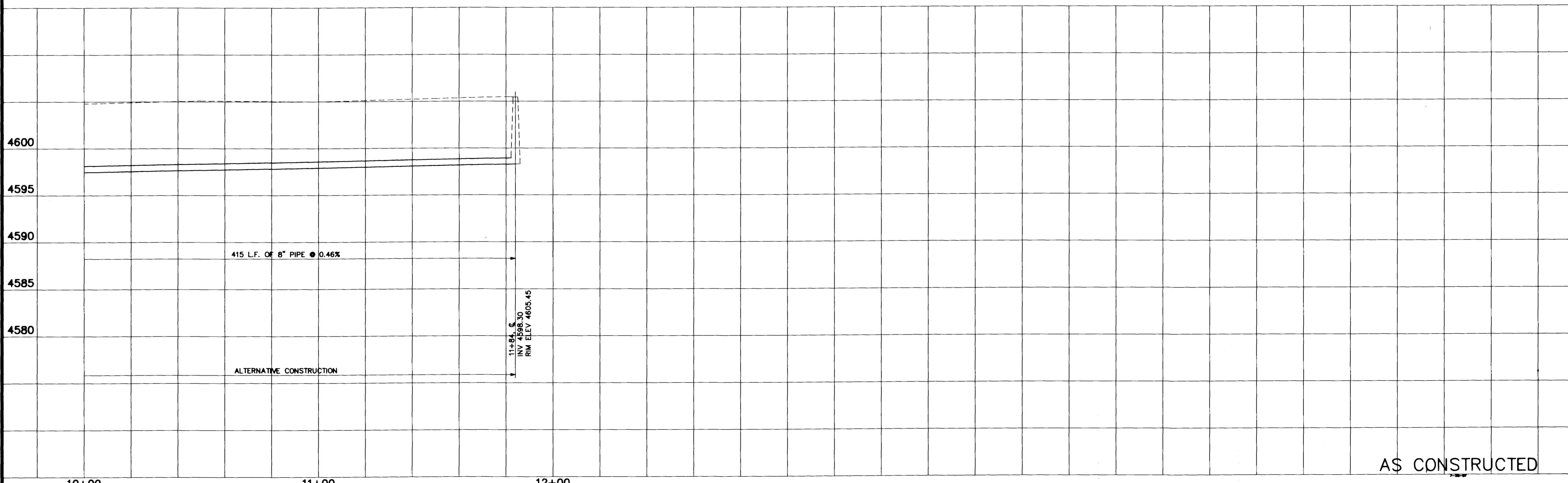
DEPARTMENT OF PUBLIC WORKS AND UTILITIES  
 ENGINEERING DIVISION  
 CITY OF GRAND JUNCTION, COLORADO

SANITARY SEWER RECONSTRUCTION 1989  
 Easement East of First Street  
 Texas Avenue to Mesa Avenue

SHEET NO. 10
OF 16
FILE NO.



TEST HOLES: #13 @ 10+60, 1' RT.



AS CONSTRUCTED

REVISION	DESCRIPTION	DATE	DRAWN BY	N.O.P.	DATE	7/89
REVISION			CHECKED BY	Lesley	DATE	7/89
REVISION			APPROVED BY	J.J.B.	DATE	7/89
REVISION			FILED BOOK NO.		PAGE	

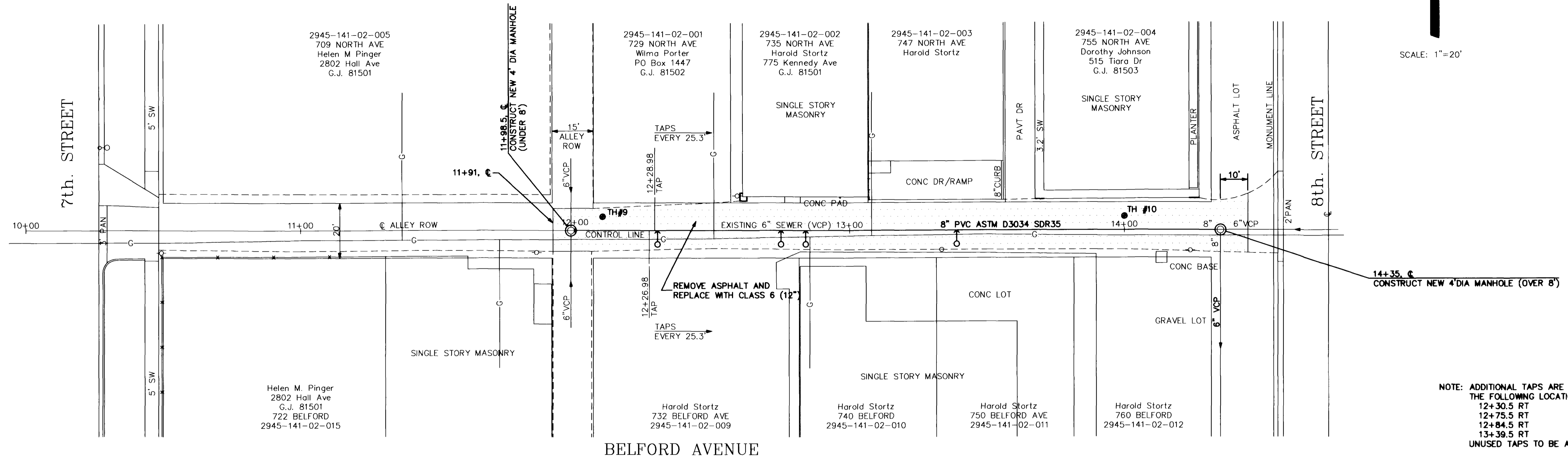
**DEPARTMENT OF PUBLIC WORKS AND UTILITIES  
ENGINEERING DIVISION  
CITY OF GRAND JUNCTION, COLORADO**

**SANITARY SEWER RECONSTRUCTION 1989  
Easement East of First Street  
Texas Avenue to Mesa Avenue**

SHEET NO.	17
OF	17
FILE NO.	

NORTH AVENUE

SCALE: 1"=20'

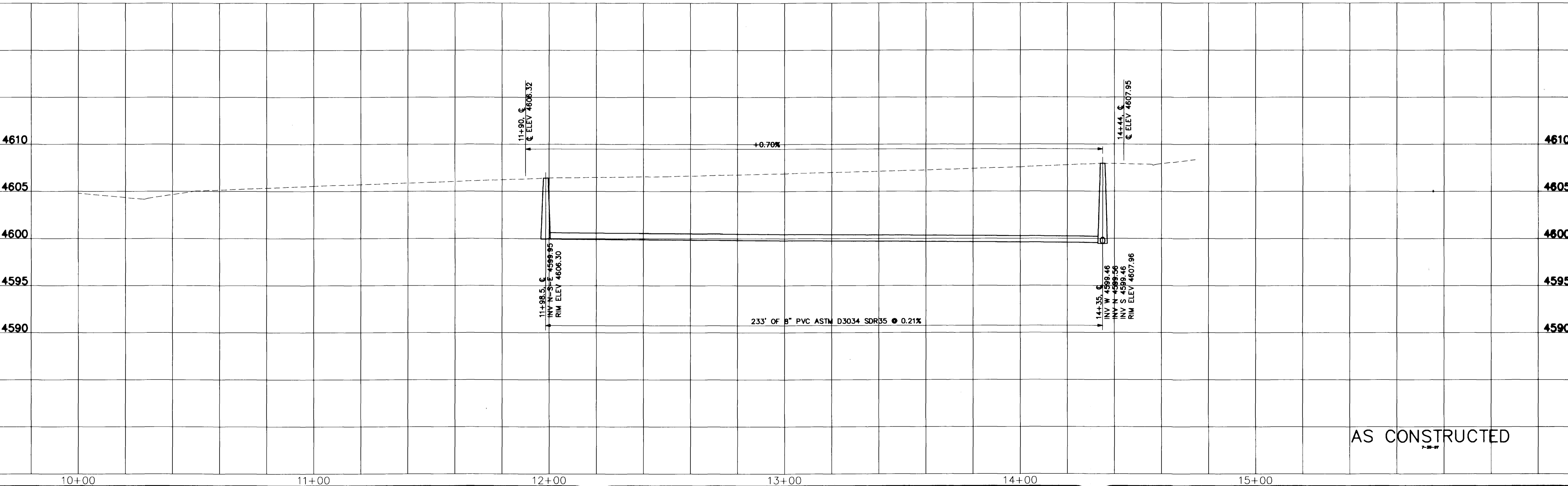


NOTE: ADDITIONAL TAPS ARE REPORTED AT THE FOLLOWING LOCATIONS,  
 12+30.5 RT  
 12+75.5 RT  
 12+84.5 RT  
 13+39.5 RT  
 UNUSED TAPS TO BE ABANDONED

⊕ INDICATES ADDITIONAL TAP

REMOVE EXISTING ASPHALT BACKFILL WITH PIT RUN PLACE 12" ABC CLASS 6

TEST HOLES: #9 ● 12+10, 5' LT.  
 #10 ● 14+00, 5' LT.



AS CONSTRUCTED

REVISION	DESCRIPTION	DATE	DRAWN BY LESLEY	DATE 7/89	SCALE PLAN 1"=20' PROFILE 1"=5'
REVISION			CHECKED BY JJB	DATE 7/89	
REVISION			APPROVED BY JJB	DATE 7/89	
REVISION			FIELD BOOK NO.	PAGE	

DEPARTMENT OF PUBLIC WORKS AND UTILITIES  
 ENGINEERING DIVISION  
 CITY OF GRAND JUNCTION, COLORADO

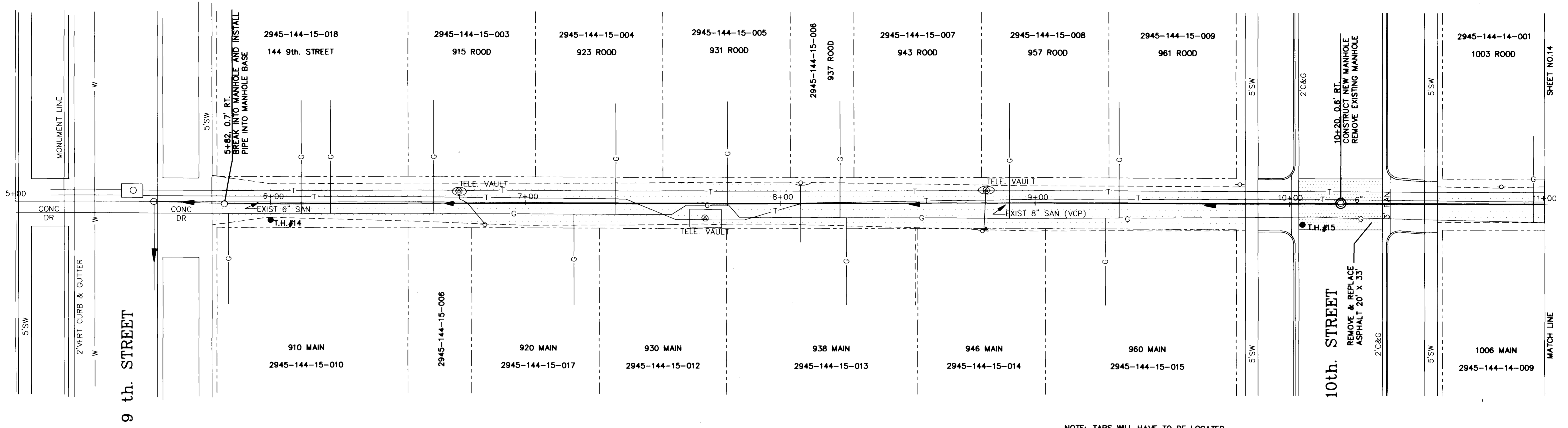
SANITARY SEWER RECONSTRUCTION 1989  
 Alley 7th. to 8th. Streets  
 Between Belford Avenue & North Avenue

SHEET NO. 10  
 OF 17  
 FILE NO.



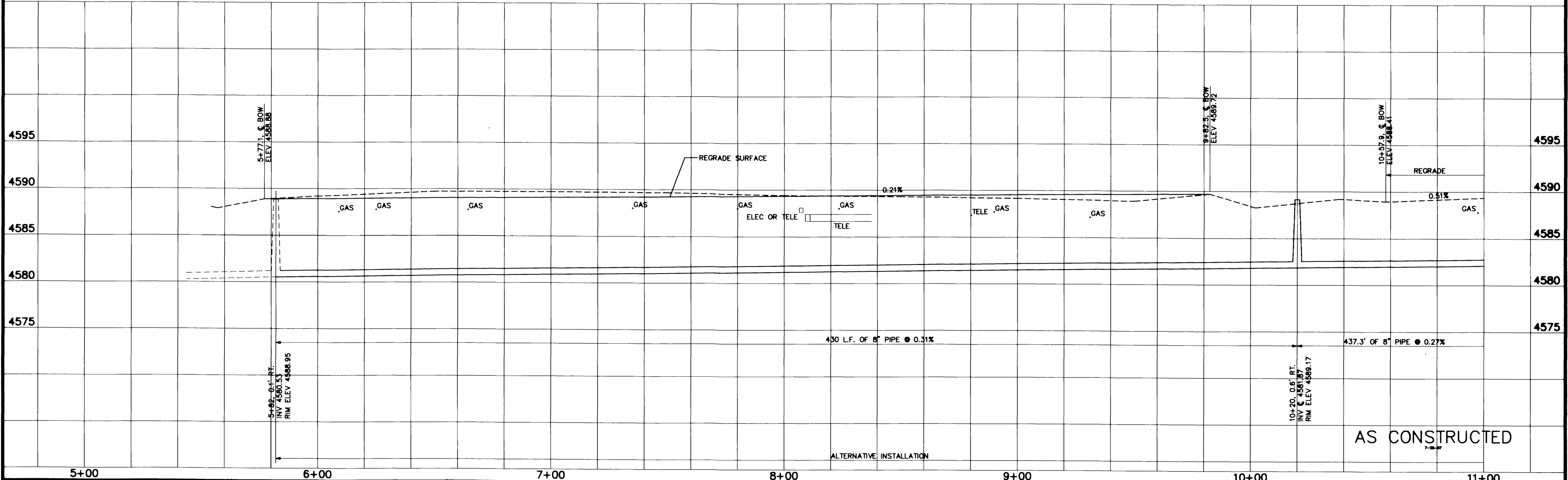
SCALE: 1"=20'

ROOD AVENUE



NOTE: TAPS WILL HAVE TO BE LOCATED  
 REMOVE EXISTING ASPHALT  
 BACKFILL NATIVE  
 PLACE 12" AGGREGATE BASE COURSE CLASS 6  
 TESTHOLES: #14 ● 6+00, 7' RT.  
 #15 ● 10+05, 8' RT.

MAIN STREET



AS CONSTRUCTED

REVISION	DESCRIPTION	DATE	DRAWN BY	DATE
			NOP	6/89
			CHECKED BY	Lesley
			DATE	6/89
			APPROVED BY	J.J.B.
			DATE	6/89
			FILED BOOK NO.	
			PAGE	

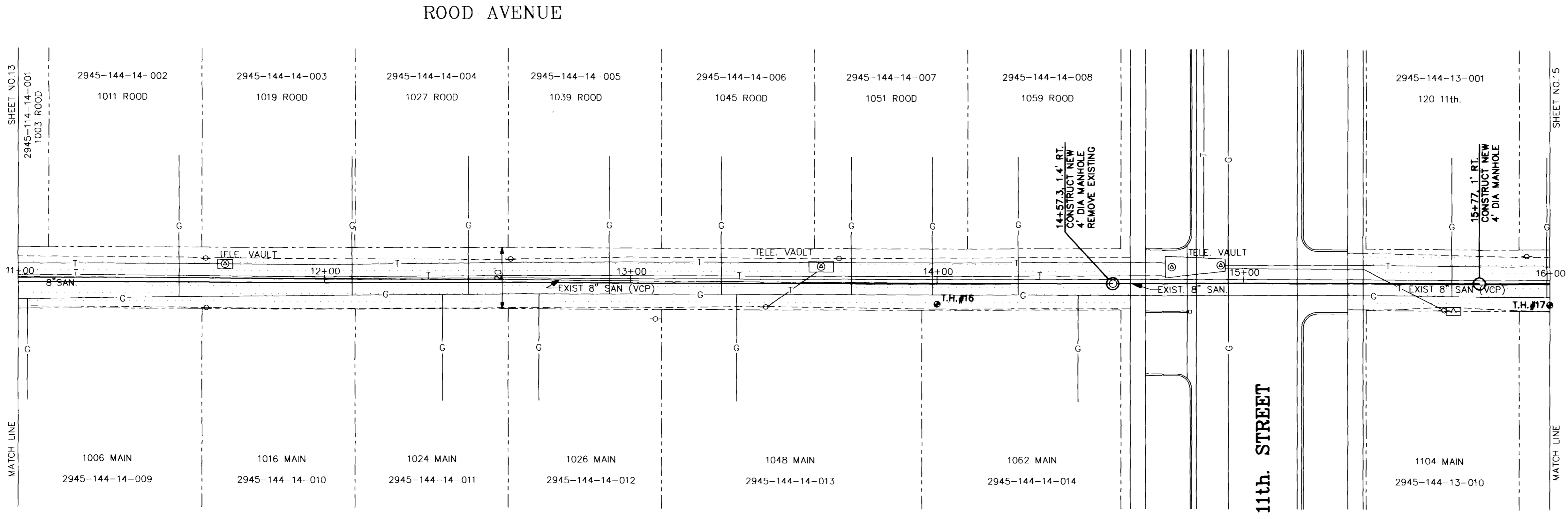
SCALE	
PLAN	PROFILE
HORIZ. 1"=20'	HORIZ. 1"=20'
	VERT. 1"=20'

DEPARTMENT OF PUBLIC WORKS AND UTILITIES  
 ENGINEERING DIVISION  
 CITY OF GRAND JUNCTION, COLORADO

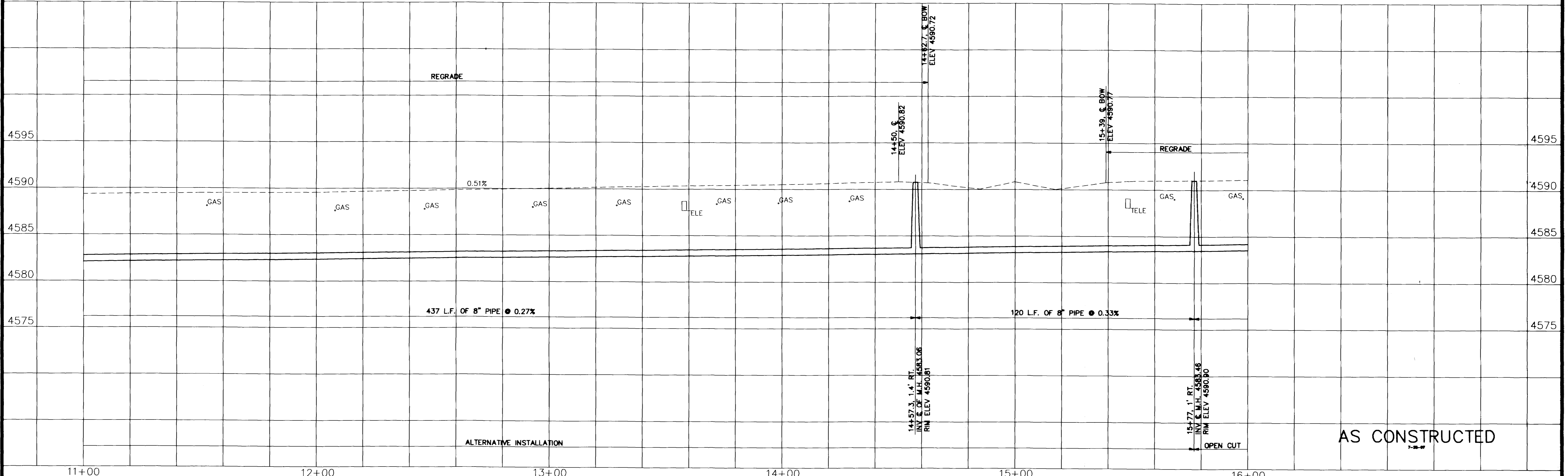
SANITARY SEWER RECONSTRUCTION 1989  
 ALLEY BTW. MAIN & ROOD-9th. to 12th.  
 900 BLOCK PLAN & PROFILE

SHEET NO.	13
OF	17
FILE NO.	

SCALE: 1"=20'



NOTE: TAP LOCATIONS UNKNOWN  
 REMOVE EXISTING ASPHALT BACKFILL-NATIVE MATERIAL  
 PLACE 12" AGGREGATE BASE COURSE CLASS 6  
 TEST HOLES: #16 @ 14+00, 8' RT.  
 #17 @ 16+00, 8' RT.



REVISION	DESCRIPTION	DATE

DRAWN BY N.O.P. DATE 7/89  
 CHECKED BY Lesley DATE 7/89  
 APPROVED BY J.J.B. DATE 7/89  
 FILED BOOK NO. PAGE

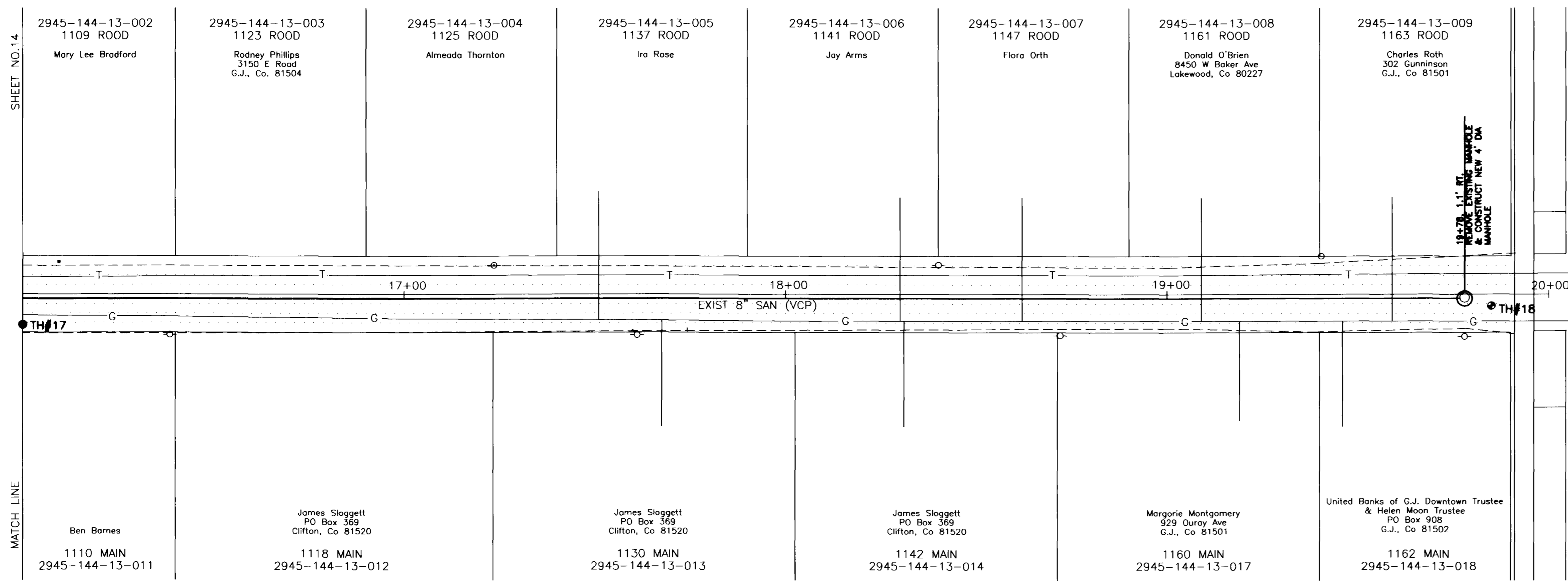
SCALE  
 PLAN 1"=20'  
 PROFILE 1"=20'  
 HORIZ. 1"=20'  
 VERT. 1"=5'

DEPARTMENT OF PUBLIC WORKS AND UTILITIES  
 ENGINEERING DIVISION  
 CITY OF GRAND JUNCTION, COLORADO

SANITARY SEWER RECONSTRUCTION 1989  
 ALLEY BTW. MAIN & ROOD-9th. 12th.  
 1000 BLOCK PLAN & PROFILE

SHEET NO. 14  
 OF 17  
 FILE NO.

ROOD AVENUE



SCALE: 1"=20'

12 th. STREET

**MANHOLE REPAIRS OR REPLACEMENTS**

1522 Hall - Remove manhole and replace with 20' of 6" PVC. Two 4" service lines will require hook-ups into new line. Manhole is located in alley approximately 60' south of Hall Avenue

6th. Street between Hill and Teller - Replace manhole, approximately 7' deep.

First manhole east of Sixth between Belford and North Avenue. Re-do manhole base and raise flow line of manhole.

Belaire Drive and Park Drive - Raise ring and cover on manhole.

23rd. Street between North Avenue and Bunting - Replace manhole, approximately 8' deep. High flows from two directions.

2445 Hall in alley between Hall and Mesa - Replace manhole and 10' of pipe in each direction. 8" in from north, east and west, 8" or 10" flows out to south.

19th. and Orchard - Raise rim and cover on manhole under existing curb and gutter. Top cone of manhole will need to be rotated to get cover out of flow line of gutter.

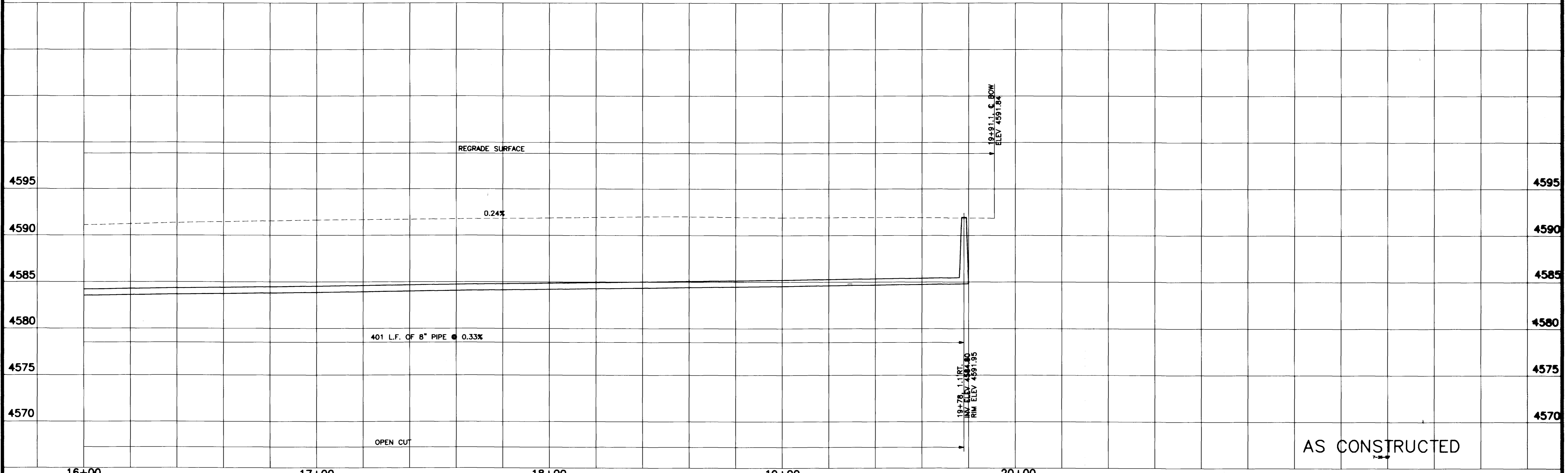
593 Rio Grande Drive - Raise ring and cover 3" to 5". Manhole will be located by sanitation department.

NOTE: TAP LOCATIONS UNKNOWN

TEST HOLES: #17 ● 16+00, 8'RT.  
#18 ● 19+85, 8'RT.

REMOVE ASPHALT BACKFILL-NATIVE MATERIAL  
PLACE 12" AGGREGATE BASE COURSE CLASS 6

MAIN STREET



REVISION	DATE	DRAWN BY	LESLEY	DATE	7/89	SCALE	
REVISION		CHECKED BY	JJB	DATE	7/89	PLAN	PROFILE
REVISION		APPROVED BY	JJB	DATE	7/89	HORIZ.	1"=20'
REVISION		FILED BOOK NO.		PAGE		VERT.	1"=5'

DEPARTMENT OF PUBLIC WORKS AND UTILITIES  
ENGINEERING DIVISION  
CITY OF GRAND JUNCTION, COLORADO

SANITARY SEWER RECONSTRUCTION 1989  
ALLEY BTW. MAIN & ROOD-9th. 12th.  
1100 BLOCK PLAN & PROFILE

SHEET NO.	15
OF	17
FILE NO.	