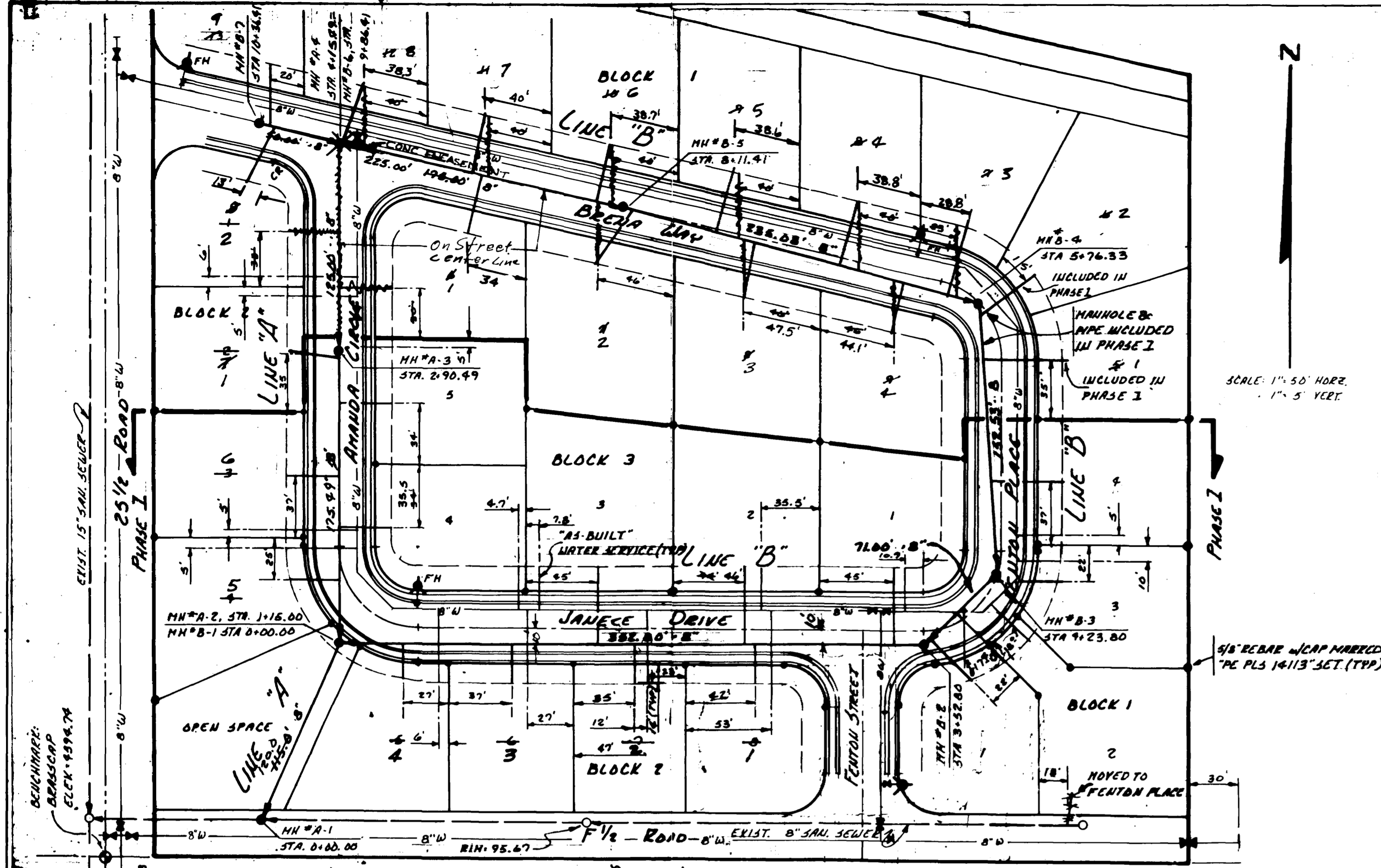


STREET PLAN & PROFILE  
**KAY SUBDIVISION**  
 A PART OF THE S.W. 1/4, N.W. 1/4,  
 SECTION 8, T1E, R1E, 1/2E MERIDIAN

**W.H. LIZER & ASSOCIATES**  
 ENGINEERING & SURVEYING  
 576 25 ROAD UNIT 2 2811122  
 GRAND JUNCTION, COLORADO 81506

As-Built Phase 1 Only 5-24-94  
 As-Built Phase 2 3/16/96  
 Consistent with  
 According to Design



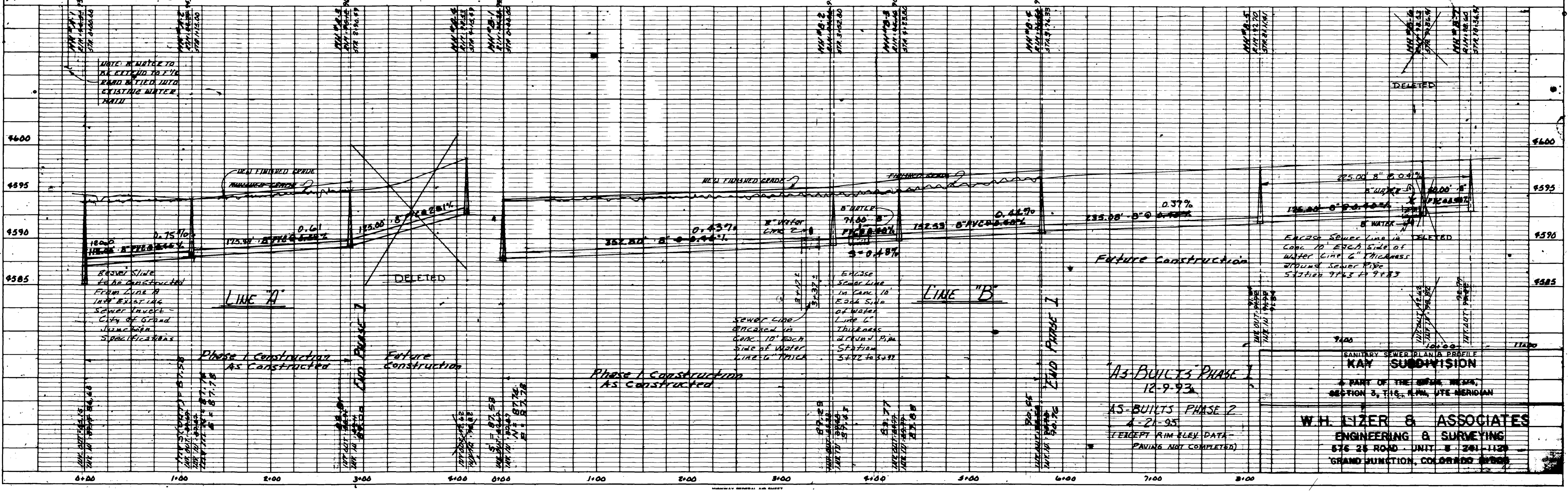
- NOTES:**
1. BENCHMARK: BRASS COP OF 2 1/2" DIA FIVE RW - ELEV = 4594.76.
  2. ALL SANITARY SEWER CONSTRUCTION TO BE IN ACCORDANCE WITH CITY OF GRAND JUNCTION STANDARDS & SPECIFICATIONS.
  3. ALL WATER MAIN CONSTRUCTION TO BE IN ACCORDANCE WITH UTE WATER STANDARDS & SPECIFICATIONS.
  4. ALL SANITARY SEWER PIPE TO BE PVC SDR35 UNLESS OTHERWISE NOTED.
  5. A MINIMUM OF 10 FEET SEPARATION SHALL BE MAINTAINED AT ALL TIMES BETWEEN THE WATER LINE AND SEWER LINE (EXCEPT AT SPECIFIED CROSSINGS).
  6. ALL SERVICE LINE CONNECTIONS TO THE NEW MAIN SHALL BE ACCOMPLISHED WITH FULL BODY WYES OR TEES. TAPPING SADDLES WILL NOT BE ALLOWED.
  7. SEWER SERVICE STUB OUTS SHALL EXTEND 14 FEET BEYOND THE PROPERTY LINE AND SHALL BE GLUE CAPPED AND MARKED WITH 2" x 4" POSTS AND PAINTED WHITE & EXTEND 2' ABOVE FINISHED GRADE.

**NOTE:**  
 • SET 1/2" REBAR w/CAP MARKED  
 \* PE PLS 14113

**MH TO MH SURVEY DATA**

MH A-1 TO MH A-2	N 28°00'00"E, 115.00'	120.0'
MH A-2 TO MH A-3	N 00°04'15"E, 175.49'	
MH A-3 TO MH A-4	N 00°04'15"E, 125.00'	
MH B-1 TO MH B-2	S 89°55'45"E, 332.80'	
MH B-2 TO MH B-3	N 47°57'49"E, 71.00'	
MH B-3 TO MH B-4	N 02°57'48"W, 152.53'	
MH B-4 TO MH B-5	N 74°22'59"W, 235.08'	
MH B-5 TO MH B-6	N 77°32'05"W, 175.00'	
MH B-6 TO MH B-7	N 77°32'05"W, 50.00'	

- Revisions:**
1. AS BUILTS REVISED 4/13/94 TO SHOW IN & OUT INVERT ELEVATIONS OF MANHOLE AND CONCRETE ENCLOSURE OF SEWER LINE B STATION 3+17 TO 3+37 WLD
  2. PHASE 2 AS-BUILTS TO DATE 4-27-95



**AS-BUILTS PHASE 1**  
12-9-93

**AS-BUILTS PHASE 2**  
4-21-95

(EXCEPT RIM ELEV. DATA - PAVING NOT COMPLETED)

**SANITARY SEWER PLAN & PROFILE**  
**KAY SUBDIVISION**  
 A PART OF THE GRAND JUNCTION, SECTION 3, T15S, R11W, UTE MERIDIAN

**W.H. LIZER & ASSOCIATES**  
 ENGINEERING & SURVEYING  
 676 25 ROAD UNIT 8 261-1120  
 GRAND JUNCTION, COLORADO 81502

