

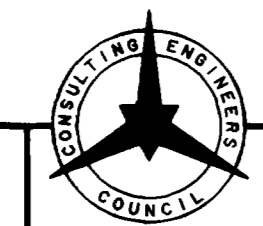
BEIGN CONSTRUCTION PHASE I
BIKE PATH & ROADSIDE SWALE

LOCATION OF TAP TO BE DETERMINED BY
LOCATION OF NEW 12" LINE TO BE CONSTRUCTED BY UTE WATER

(IN FEET)
1 inch = 50 ft.

BENCHMARK:
USGS "BM" 497.53' NORTH OF NE CORNER OF CANYON VIEW, ON WEST SIDE OF SOUTH CAMP ROAD. ELEV. 4777.00

NOTE:
WATER AND SEWER SERVICE ASBULTS SHOWN HEREON ARE BASED UPON SANITARY SEWER STATIONING, NOT ROAD CENTERLINE STATIONING.



American Consulting Engineers Council Member

THOMPSON-LANGFORD CORP.
529 25 1/2 RD., SUITE B210
GRAND JUNCTION, COLORADO
PH. (303) 243-6067

REVISION	DATE	DESCRIPTION	BY	CHD
1	7/18/94	ADD 20" SEWER ENCASUREMENT	CPD	JEL
2	8/31/94	ADD AS-BUILT LOC. WATER & SEWER	CPD	JEL
3	1/19/95	REVISE ASBULTS TO SHOW INVERTS IN & INVERTS OUT	MWT	JEL
4	1/19/95	REFERENCED WATER AND SEWER SERVICES TO SANITARY SEWER STATIONING AND OFFSET		

THOMAS & SUN ENERGY EFFICIENT HOMES

CANYON VIEW

SCALE: 1" = 50'

JOB NO: 0208-001

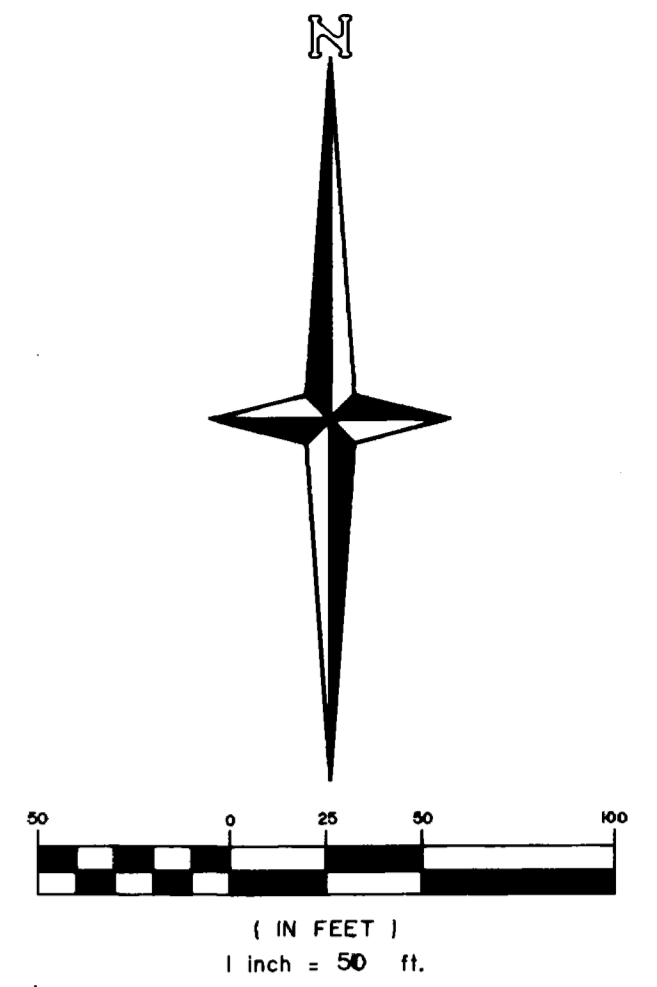
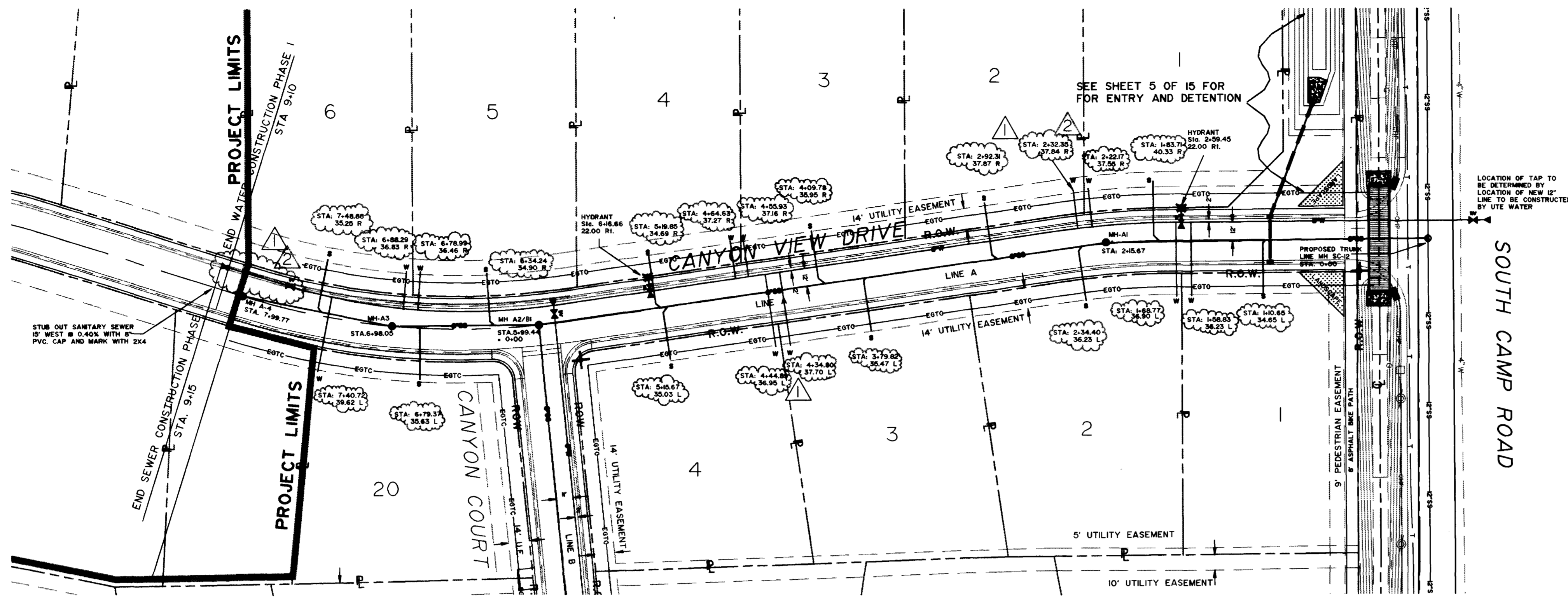
DATE: 2/14/94

SHEET NO: 3 OF 15

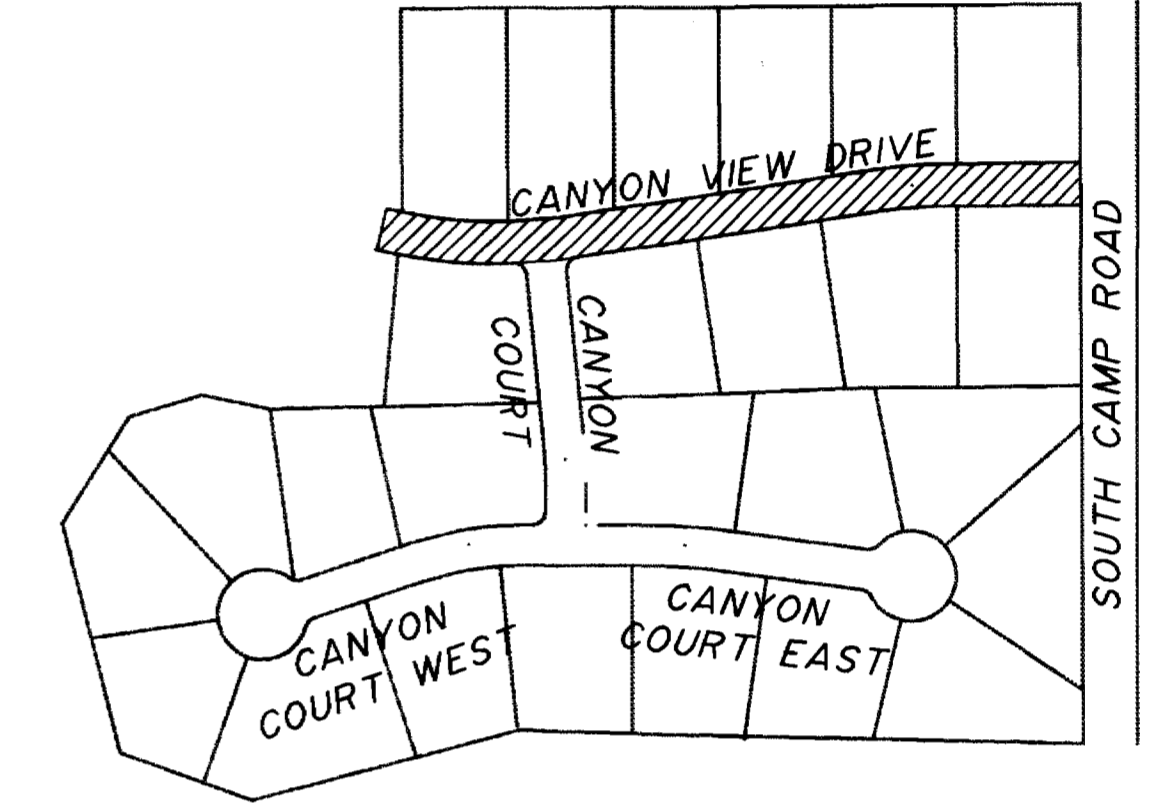
UTILITY COMPOSITE

AS BUILT
8/31/94

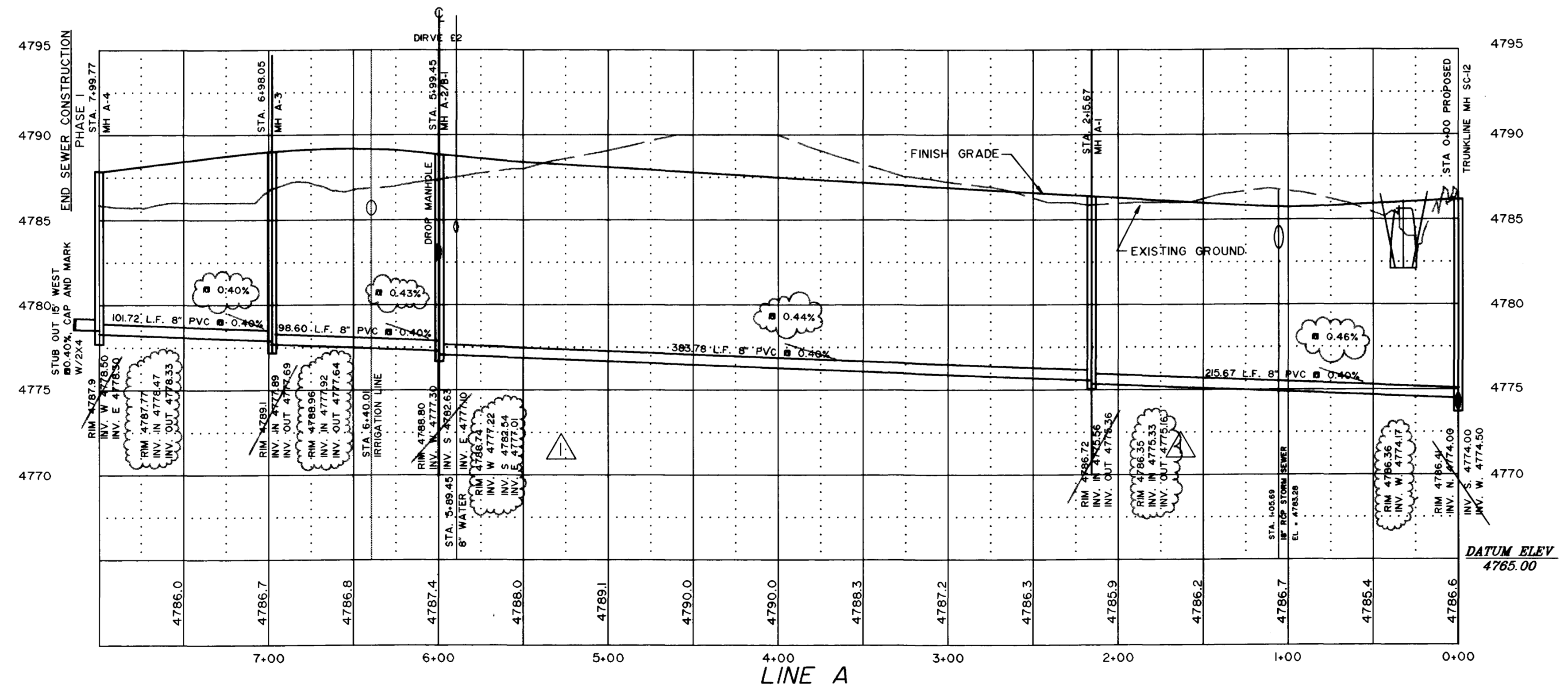
DRAWN BY: MWT	REVIEWED _____ DATE: _____ FOR _____
DESIGNED BY: JEL	REVIEWED _____ DATE: _____
CHECKED BY: JEL	DATE: _____



BENCHMARK:
 USGS "BM" 497.53' NORTH OF NE CORNER
 OF CANYON VIEW, ON WEST SIDE OF
 SOUTH CAMP ROAD. ELEV. 4777.00



NOTE:
 WATER AND SEWER SERVICE ASBUILTS
 SHOWN HEREON ARE BASED UPON SANITARY
 SEWER STATIONING, NOT ROAD CENTERLINE
 STATIONING. WHERE SERVICES EXTEND PAST
 SEWERLINES THEY ARE TIED TO PROPERTY
 CORNERS.



AS-BUILT
 8/31/94

APPROVED FOR CONSTRUCTION	FINAL ACCEPTANCE
<i>[Signature]</i>	<i>Bill Cheney</i> 2.10.95
CITY OF GRAND JUNCTION DATE	CITY OF GRAND JUNCTION DATE

DRAWN BY: MWT	REVIEWED _____ DATE: _____ FOR _____
CHECKED BY: JEL	REVIEWED _____ DATE: _____

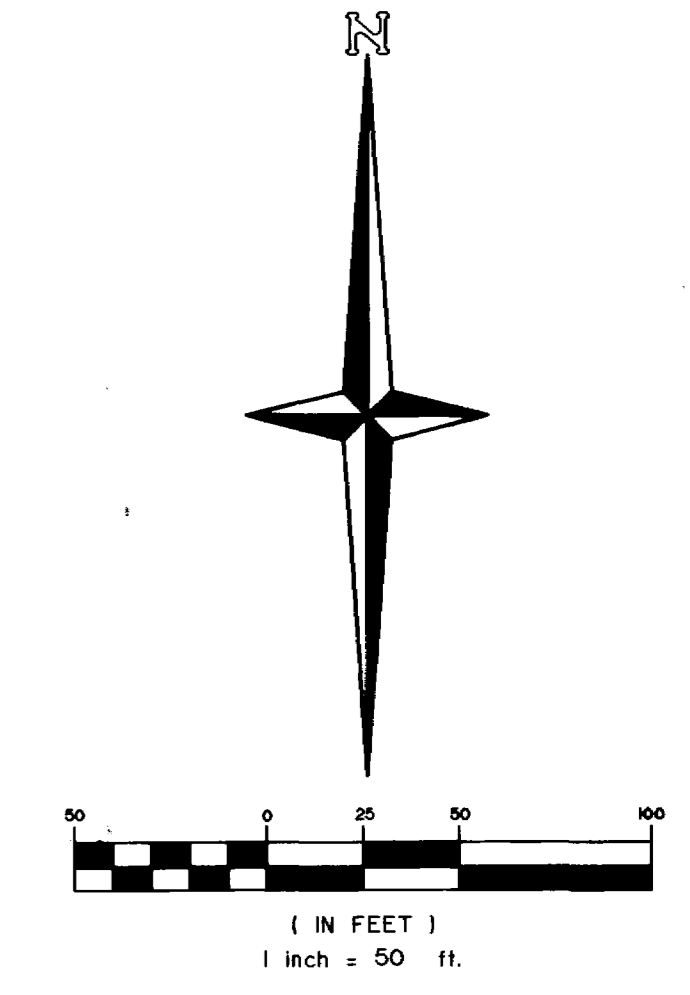
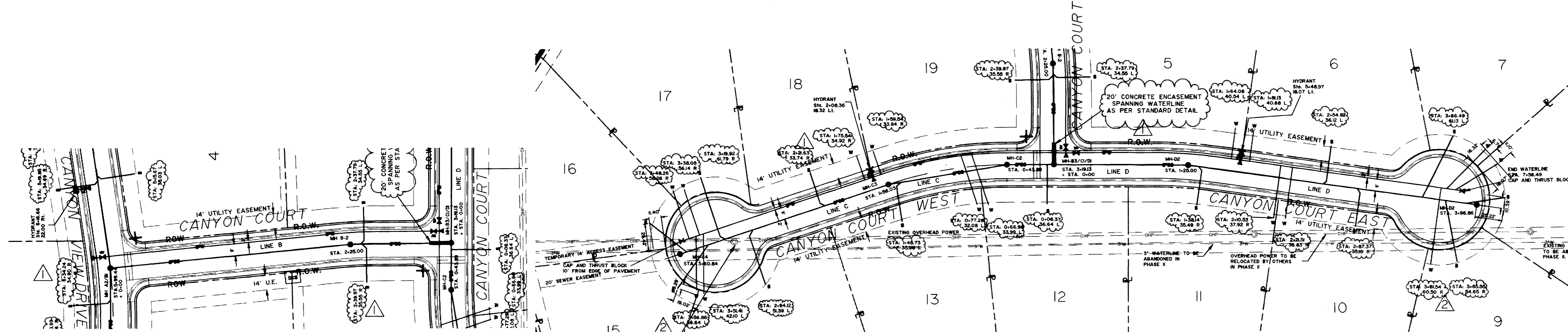
THOMPSON-LANGFORD CORP.
 529 25 1/2 RD., SUITE B210
 GRAND JUNCTION, COLORADO
 PH. (303) 243-6067

REVISION	DATE	DESCRIPTION	BY	CHKD
1	7/21/94	ASBUILT REVISIONS TO WATER AND SEWER	CPD	JEL
2	1/19/95	REVISE ASBUILTS TO SHOW INVERTS IN 8 INVERTS OUT	MWT	JEL
3	1/19/95	REFERENCED WATER AND SEWER SERVICES TO SANITARY SEWER STATIONING AND OFFSET		

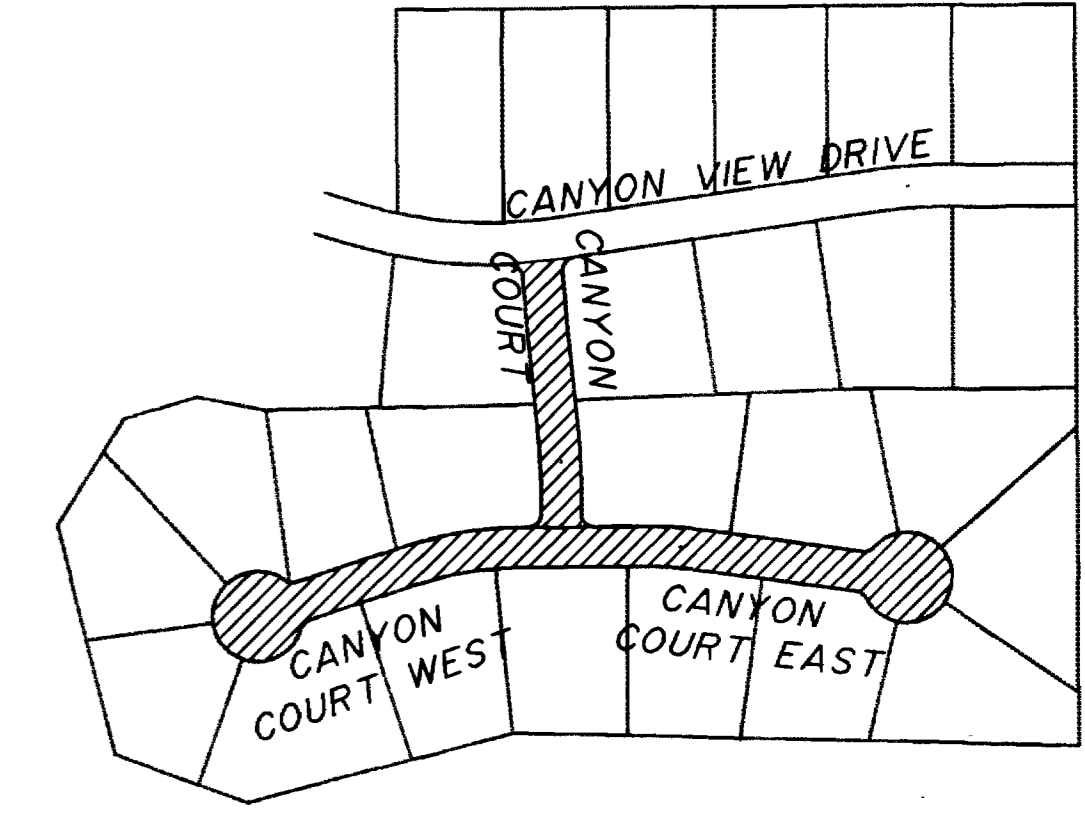
THOMAS & SUN ENERGY EFFICIENT HOMES	CANYON VIEW	SCALE: Horiz: 1" = 50' Vert: 1" = 5'	Project No: 0208-001
SANITARY SEWER (LINE A)		DATE: 3/3/94	SHEET NO: 8 OF 15

Rec. 1-20-95

02085702.tif

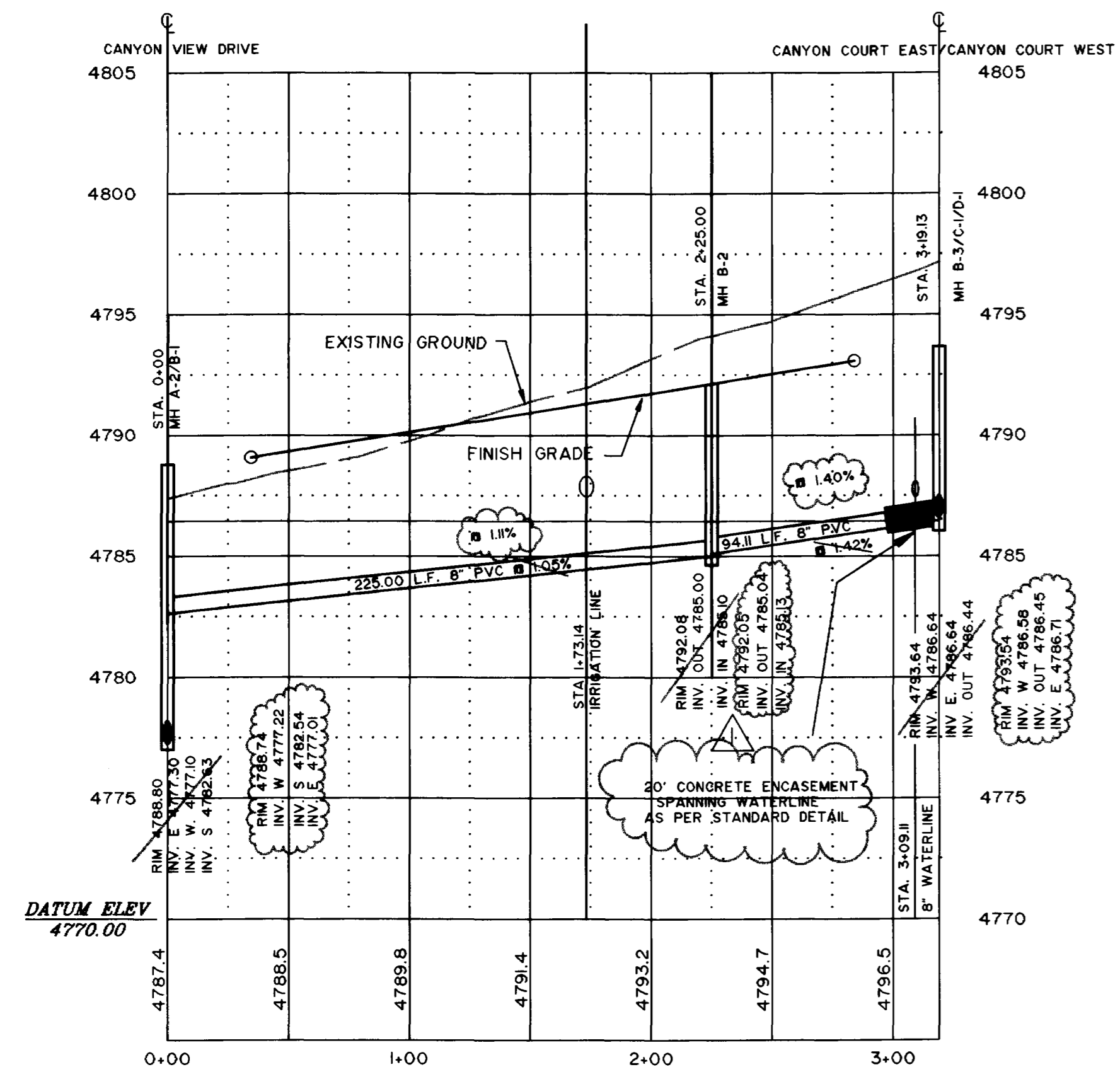


BENCHMARK:
USGS "BM" 497.53' NORTH OF NE CORNER OF CANYON VIEW ON WEST SIDE OF SOUTH CAMP ROAD. ELEV. 4777.00

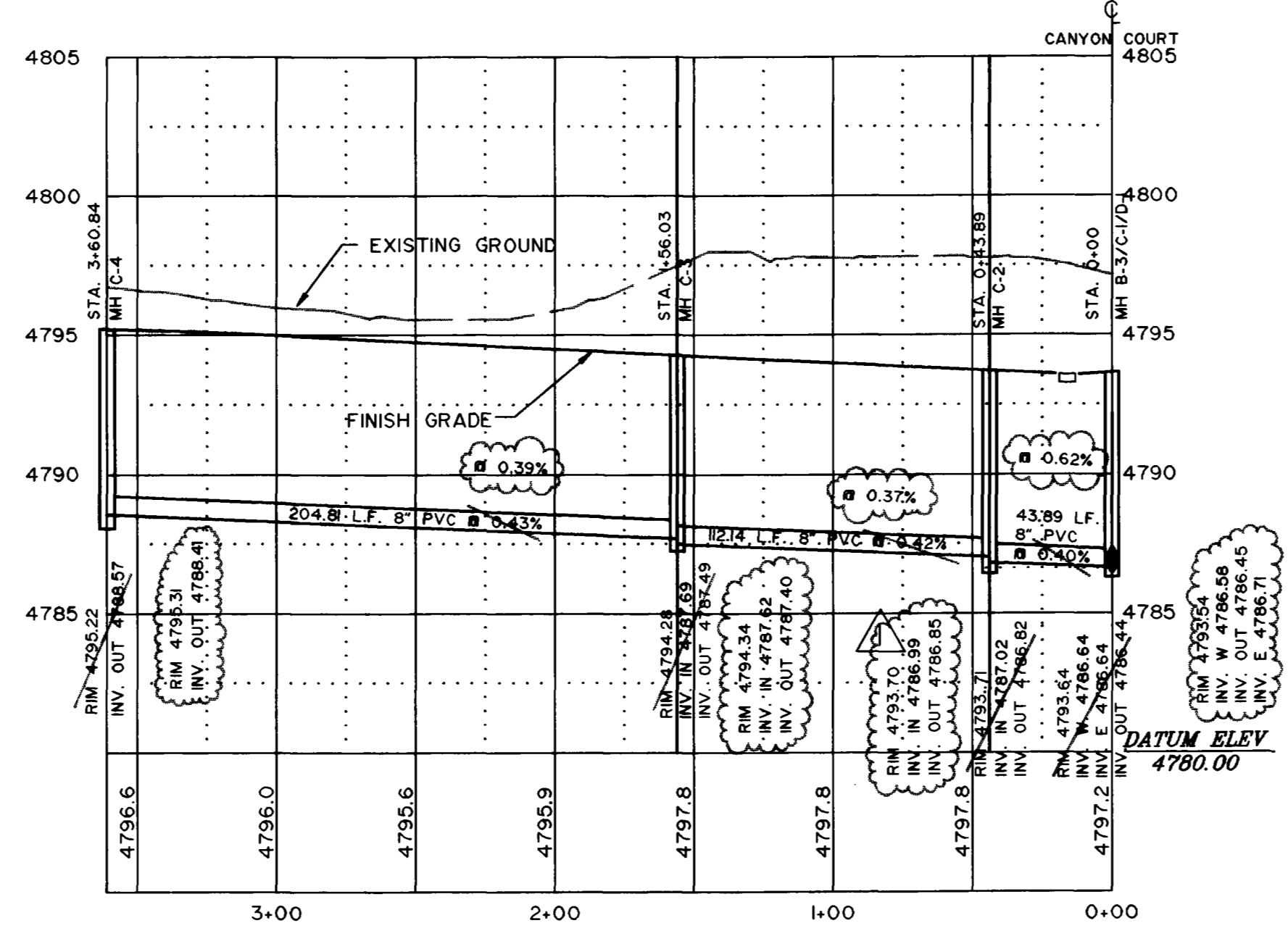


AS-BUILT
8/31/94

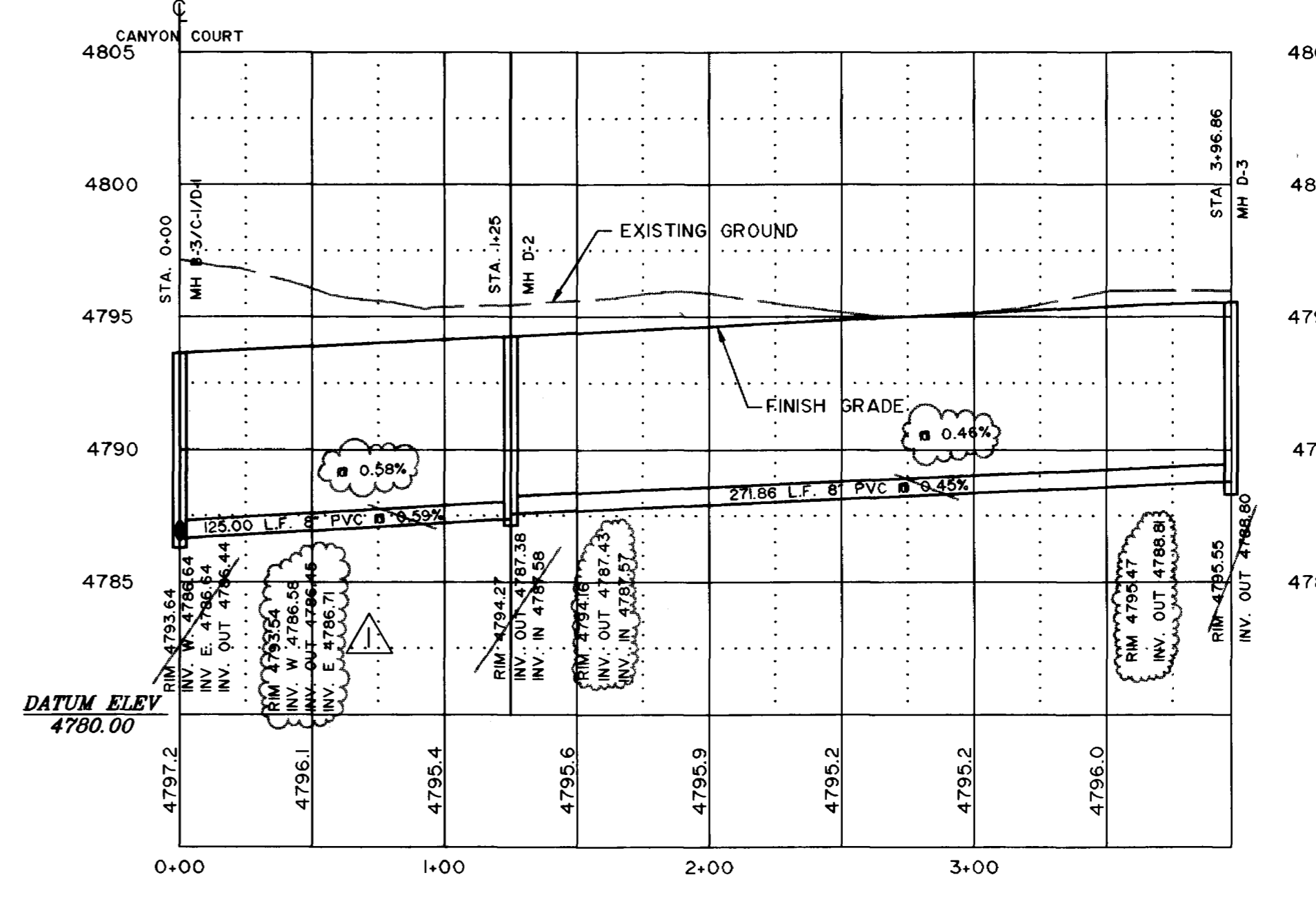
NOTE:
WATER AND SEWER SERVICE ASBUILTS SHOWN HEREON ARE BASED UPON SANITARY SEWER STATIONING, NOT ROAD CENTERLINE STATIONING. WHERE SERVICES EXTEND PAST SEWERLINES THEY ARE TIED TO PROPERTY CORNERS.



LINE B



LINE C



LINE D

DRAWN BY: MWT	REVIEWED _____ DATE: _____ FOR _____
CHECKED BY: JEL	REVIEWED _____ DATE: _____



THOMPSON-LANGFORD CORP.
529 25 1/2 RD., SUITE B210
GRAND JUNCTION, COLORADO
PH. (303) 243-6067

REVISION	DATE	DESCRIPTION	BY	CHKD
1	7/18/94	ADD 20' SEWER ENCASUREMENT AND WATER & SEWER AS-BUILT LOCATIONS	CPD	JEL
2	1/19/95	REVISE ASBUILTS TO SHOW INVERTS IN & INVERTS OUT	MWT	JEL
3	1/19/95	REFERENCED WATER AND SEWER SERVICES TO SANITARY SEWER STATIONING AND OFFSET		

APPROVED FOR CONSTRUCTION		FINAL ACCEPTANCE	
CITY OF GRAND JUNCTION	DATE	CITY OF GRAND JUNCTION	DATE
THOMAS & SUN ENERGY EFFICIENT HOMES		CANYON VIEW	
SANITARY SEWER (LINES B, C & D)		SCALE: Horiz: 1" = 50' Vert: 1" = 5'	Project No: 0208-001
DATE: 3/3/94		SHEET NO: 9 OF 15	