

LOT 4
(POTENTIAL ACQUISITION)

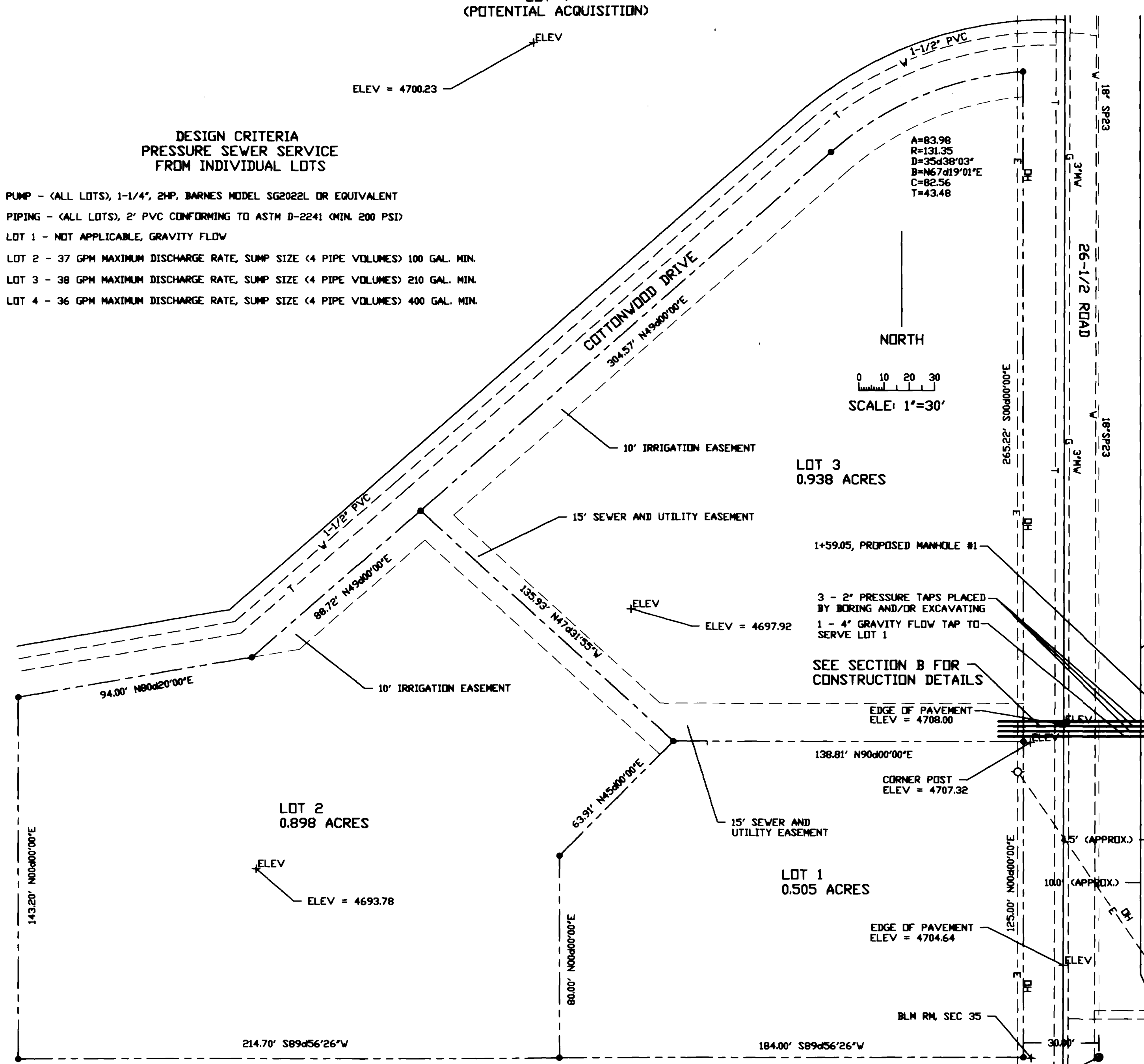
ELEV = 4700.23

DESIGN CRITERIA
PRESSURE SEWER SERVICE
FROM INDIVIDUAL LOTS

- PUMP - (ALL LOTS), 1-1/4" ZHP, BARNES MODEL SG2022L DR EQUIVALENT
- PIPING - (ALL LOTS), 2" PVC CONFORMING TO ASTM D-2241 (MIN. 200 PSF)
- LOT 1 - NOT APPLICABLE, GRAVITY FLOW
- LOT 2 - 37 GPM MAXIMUM DISCHARGE RATE, SUMP SIZE (4 PIPE VOLUMES) 100 GAL. MIN.
- LOT 3 - 38 GPM MAXIMUM DISCHARGE RATE, SUMP SIZE (4 PIPE VOLUMES) 210 GAL. MIN.
- LOT 4 - 36 GPM MAXIMUM DISCHARGE RATE, SUMP SIZE (4 PIPE VOLUMES) 400 GAL. MIN.

A=83.98
R=131.35
D=35438'03"
B=467419'01"E
C=82.56
T=43.48

NORTH
SCALE: 1"=30'



LOT 3
0.938 ACRES

1+59.05, PROPOSED MANHOLE #1

3 - 2" PRESSURE TAPS PLACED BY BORING AND/OR EXCAVATING 1 - 4" GRAVITY FLOW TAP TO SERVE LOT 1

SEE SECTION B FOR CONSTRUCTION DETAILS

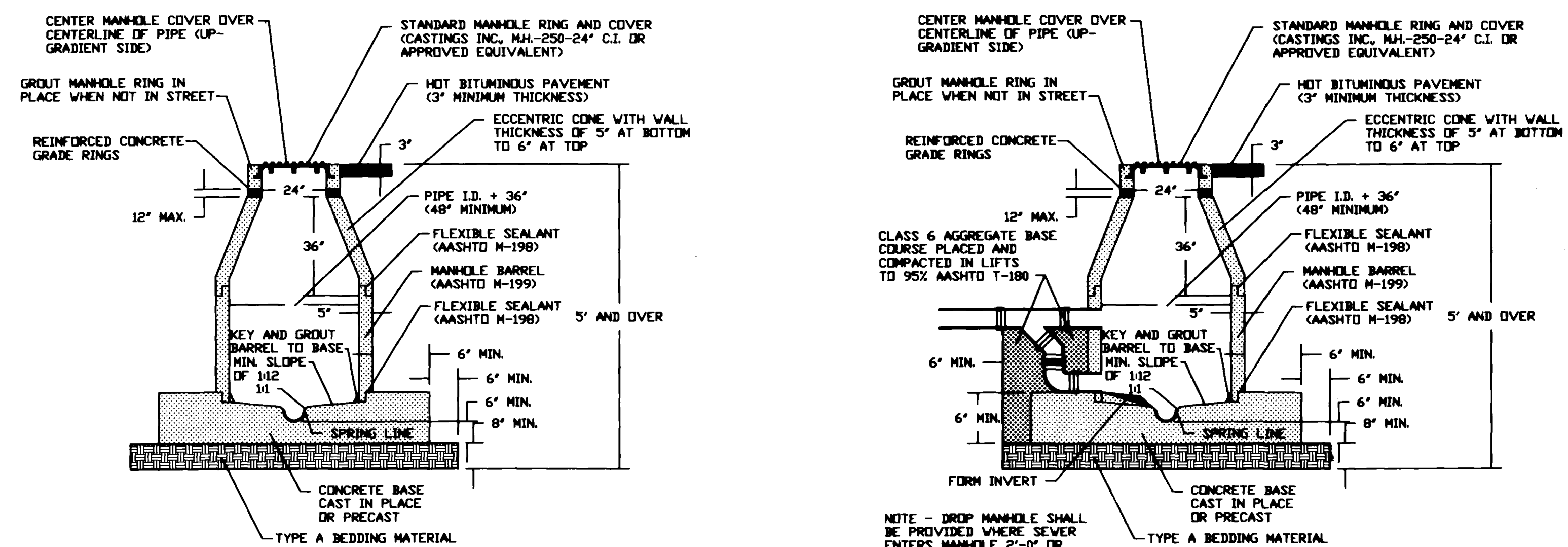
ELEV = 4697.92

LOT 2
0.898 ACRES

ELEV = 4693.78

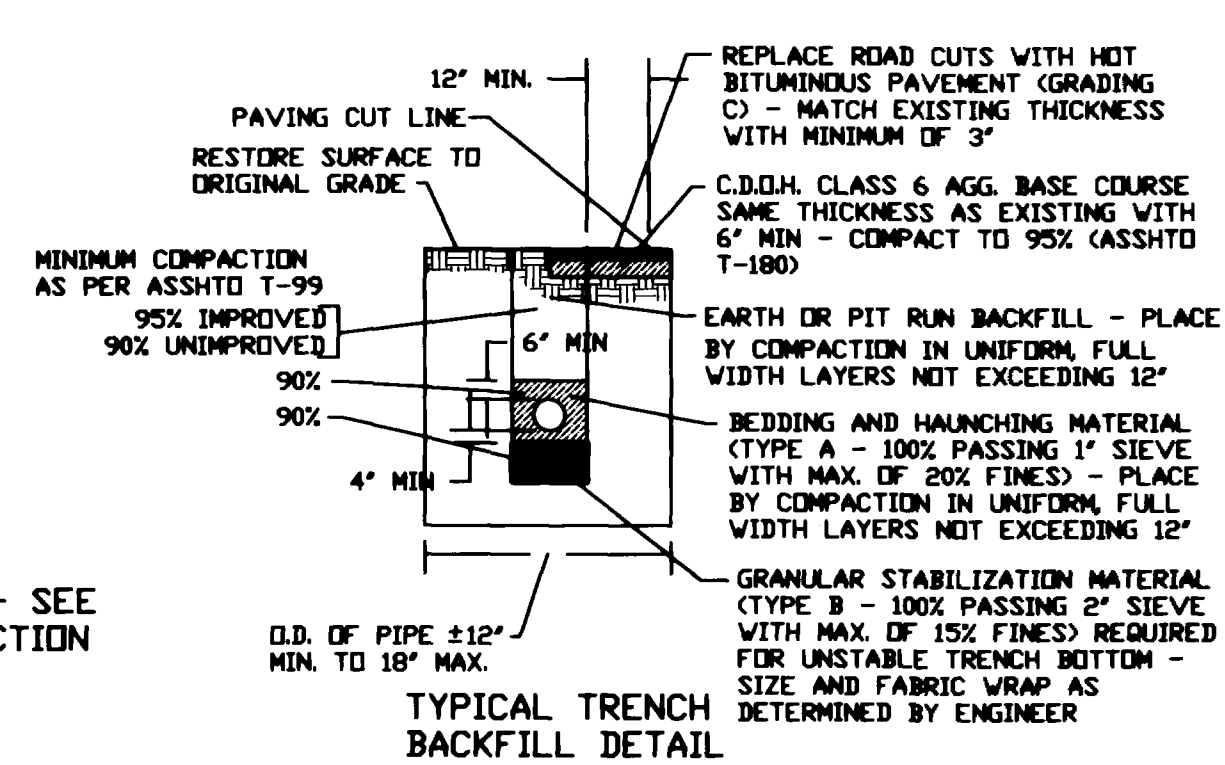
LOT 1
0.505 ACRES

ELEV = 4704.64

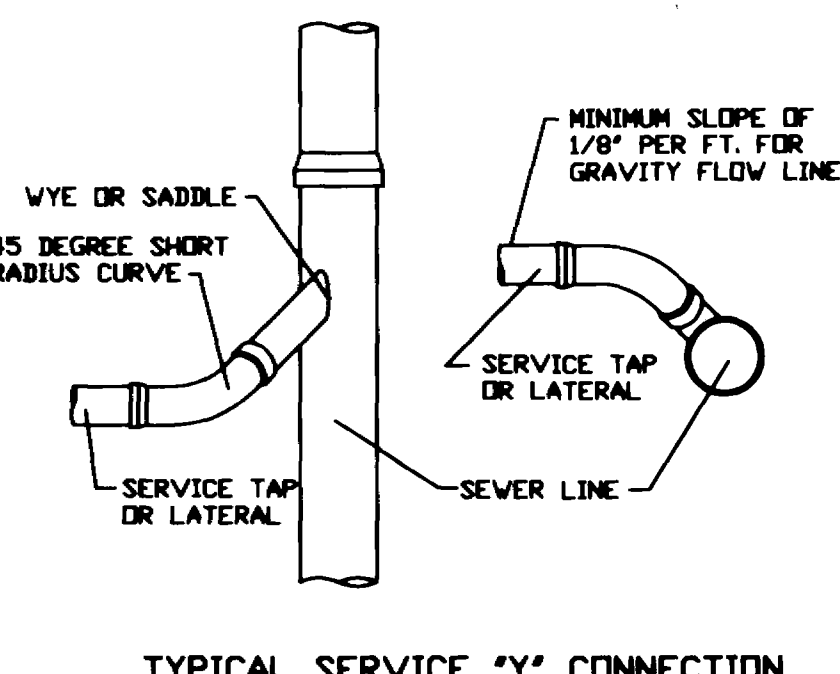


STANDARD MANHOLE

DROP MANHOLE



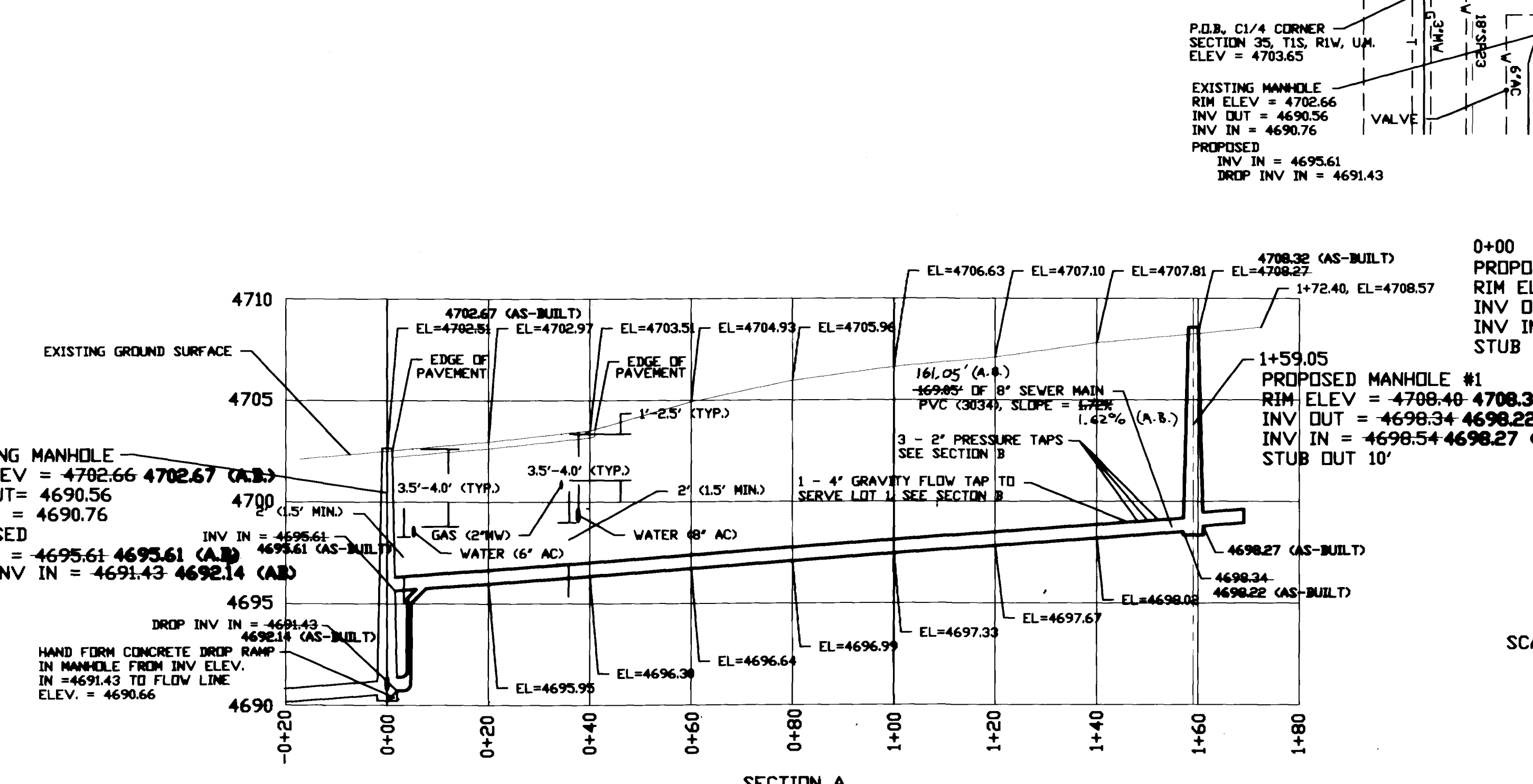
TYPICAL TRENCH BACKFILL DETAIL



TYPICAL SERVICE "Y" CONNECTION

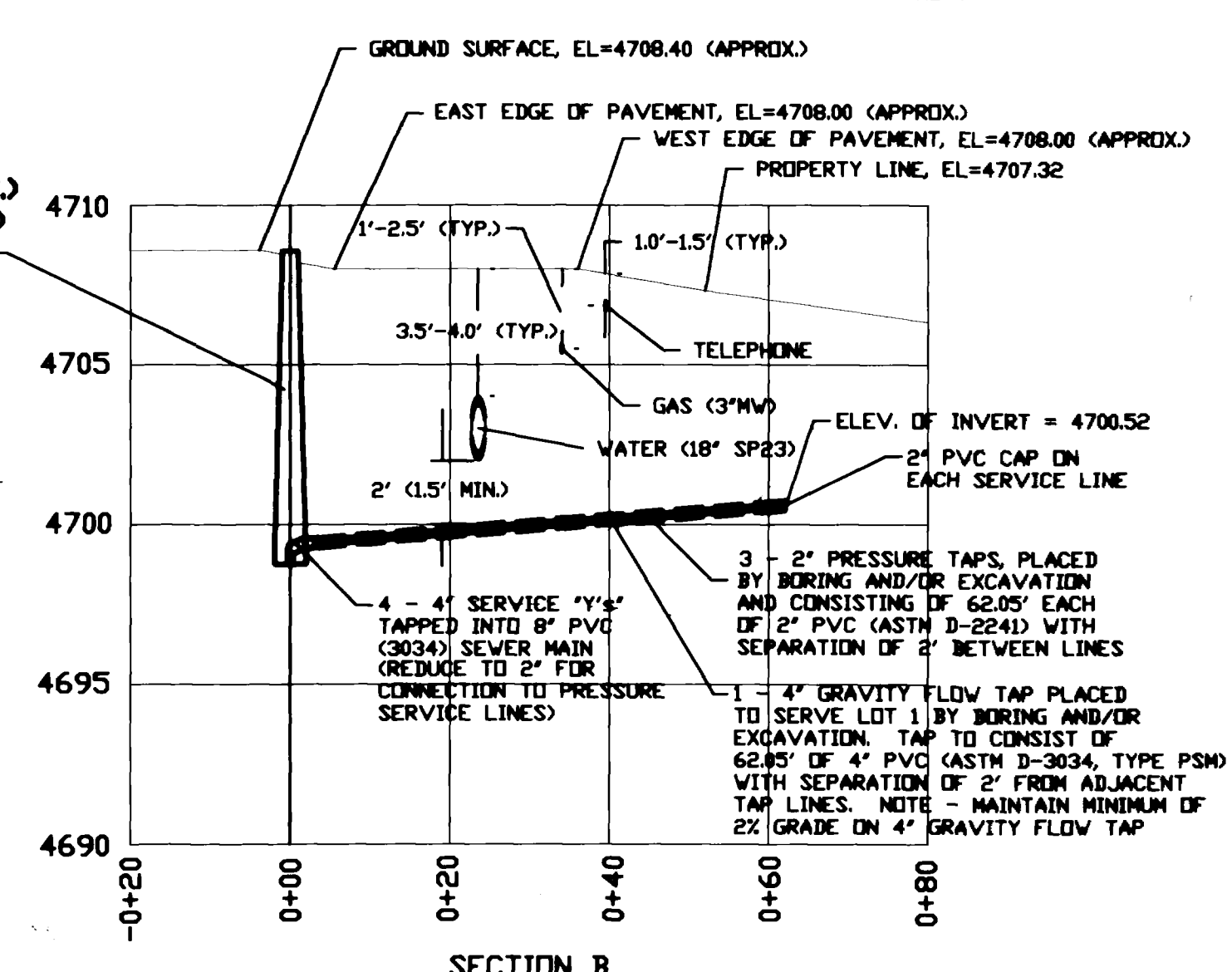
NOTES

- ALL CONSTRUCTION AND MATERIALS SHALL COMPLY WITH THE CITY OF GRAND JUNCTION SPECIFICATIONS AND STANDARDS DETAILS
- CARRY PRESSURE SERVICE LATERALS INSIDE PROPERTY LINES 10'
- WHENEVER THE SEWER LINE IS ABOVE, OR LESS THAN 18 INCHES BELOW A WATER LINE AT A POINT OF CROSSING THE SEWER LINE WITHIN THAT AREA SHALL BE CONSTRUCTED OF APPROVED WATER LINE PIPE AND JOINTS (DUCTILE IRON CEMENT MORTAR LINED PIPE CONFORMING TO AWWA C-151 OR PVC PIPE CONFORMING TO AWWA C-900 CLASS 150, DR 18) OR 2) A DESIGNED PROTECTION SYSTEM SUBJECT TO THE REVIEW AND APPROVAL OF THE CITY'S UTILITY ENGINEER.
- ALL TREES, SHRUBBERY, FENCES, AND OTHER PLANTINGS AND STRUCTURES NOT DESIGNATED FOR REMOVAL SHALL BE PROTECTED OR, IF MOVED, RESTORED TO THEIR ORIGINAL CONDITION AFTER CONSTRUCTION IS COMPLETED.
- A NO. 10 SOLID COPPER TRACER WIRE SHALL BE PLACED ALONG ALL PRESSURE SERVICE LATERAL.
- CONFIRM ALL UTILITY LOCATES BEFORE EXCAVATING
- OBTAIN APPROVAL AND DETERMINE ROAD BORING PROTOCOL FROM UTILITY COMPANIES FOR ALL ROAD BORING OPERATIONS BEFORE BORING IS INITIATED
- MAINTAIN MINIMUM FALL OF 2% ON 4" GRAVITY FLOW TAP TO SERVE LOT 1
- PROPOSED DROP INVERT FOR EXISTING MANHOLE TO ENTER MANHOLE AT TOP OF MANHOLE BASE. DOCUMENT AS-BUILT INVERT ELEVATION AND HAND FORM CONCRETE BEAVER-TAIL RAMP TO CHANNEL FLOW TO EXISTING FLOW LINE ELEVATION AT 4690.66 (APPROX.)



SECTION A

0+00 PROPOSED MANHOLE #1
RIM ELEV = 4708.40 4708.32 (A.B.)
INV OUT = 4698.34 4698.22 (A.B.)
INV IN = 4698.54 4698.27 (A.B.)
STUB OUT 10'



SECTION B

SCALE: HOR. 1"=20'
VER. 1"=5'

PAGE 1 OF 1
DRAWN TAC DATE 07/26/93
REVISED T.A.B. DATE 08/16/93
CHECKED A.B. DATE 03/07/94
APPROVED _____ DATE _____

PROJECT: MONGER SEWER EXTENSION
REFERENCE: NORTH ROLLING ACRES
PROJECT LOCATION: 26-1/2 & G-1/2 ROADS
DATE: JULY 26, 1993
SCALE: 1"=30'
PREPARED BY: TOM A. CRONK

CRONK CONSTRUCTION INCORPORATED
1129 -24- ROAD
GRAND JUNCTION, CO 81505
303-245-0577