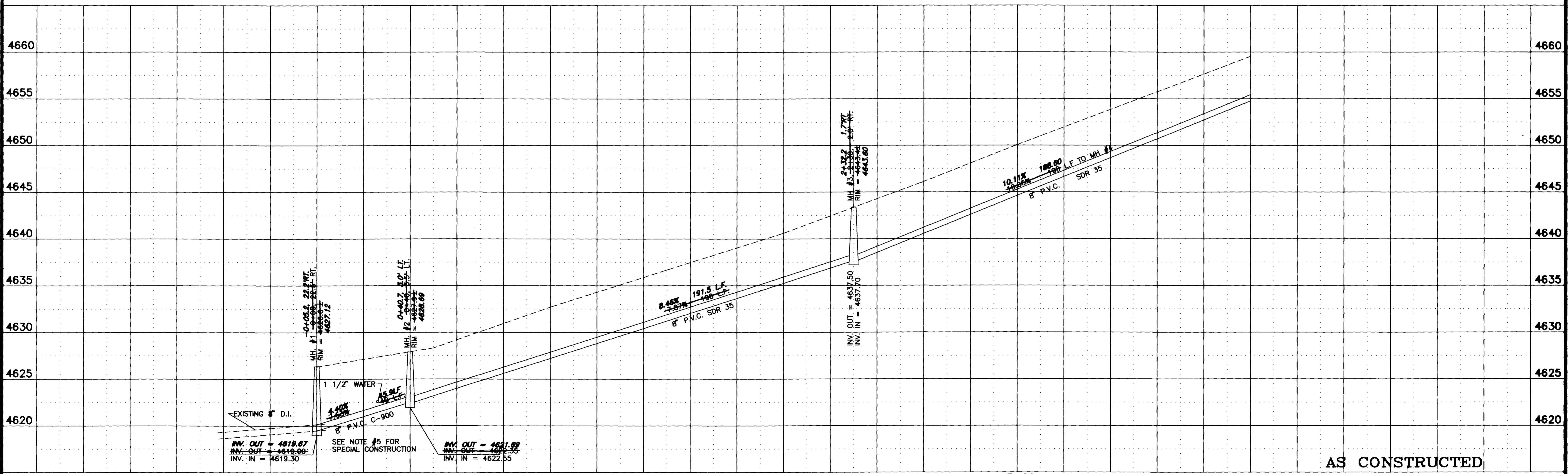
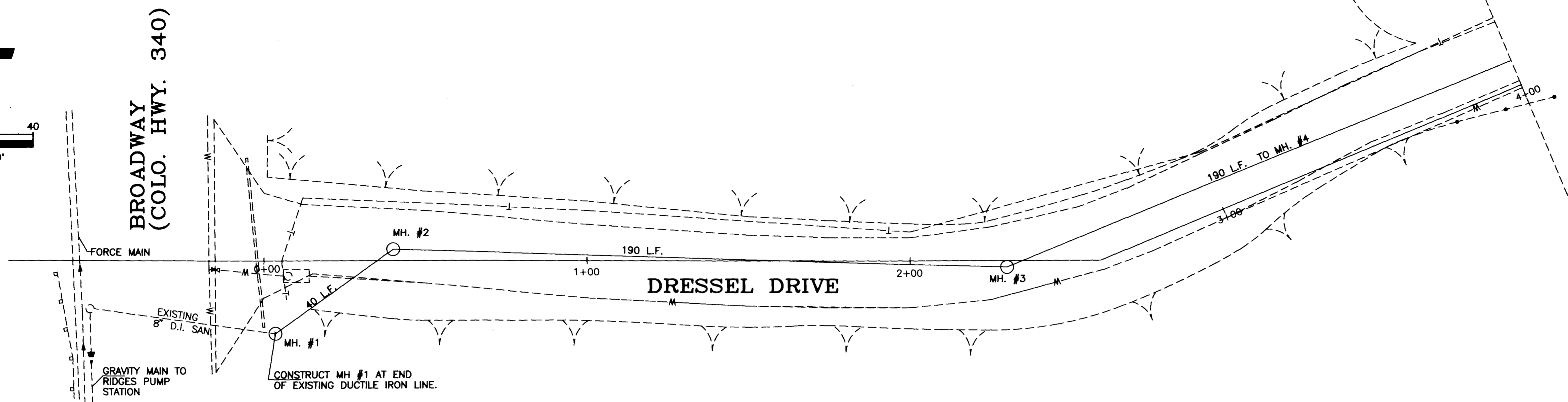


CONSTRUCTION NOTES:

- ① ALL CONSTRUCTION TO BE DONE IN ACCORDANCE WITH CITY OF GRAND JUNCTION STANDARD SPECIFICATIONS FOR CONSTRUCTION OF WATER LINES, SANITARY SEWERS, STORM DRAINAGE AND IRRIGATION SYSTEMS.
- ② CONTACT CITY UTILITY DEPARTMENT AT 244-1554 24 HRS. PRIOR TO THE START OF CONSTRUCTION.
- ③ UTILITY LOCATIONS SHOWN ON PLANS ARE APPROXIMATE ONLY. CONTRACTOR TO FIELD VERIFY PRIOR TO THE START OF CONSTRUCTION.
- ④ UTILITY PERMITS REQUIRED FROM COLORADO DEPARTMENT OF TRANSPORTATION AND MESA COUNTY ENGINEERING PRIOR TO START OF CONSTRUCTION.
- ⑤ CONSTRUCT SEWER LINE FROM MANHOLE #1 TO MANHOLE #2 WITH 8" P.V.C., C-900 PIPE. ENCASE JOINT WITH AT LEAST 6" OF CONCRETE, AROUND AND ON BOTH SIDES OF JOINT. *OR SDR 35 P.V.C.*
- ⑥ REPLACE ROAD SURFACE AS DIRECTED BY MESA COUNTY ENGINEERING.



0 5 10 20 40
SCALE: 1"=20'



AS CONSTRUCTED

REVISION	DESCRIPTION	DATE
Δ	"AS BUILTS" PER J.W.C.	8/24
Δ		
Δ		
Δ		

DRAWN BY	L. MARTIN	DATE	3/93
CHECKED BY	J.W.C.	DATE	3/93
APPROVED BY	J.W.C.	DATE	3/93
FIELD BOOK NO.		PAGE	

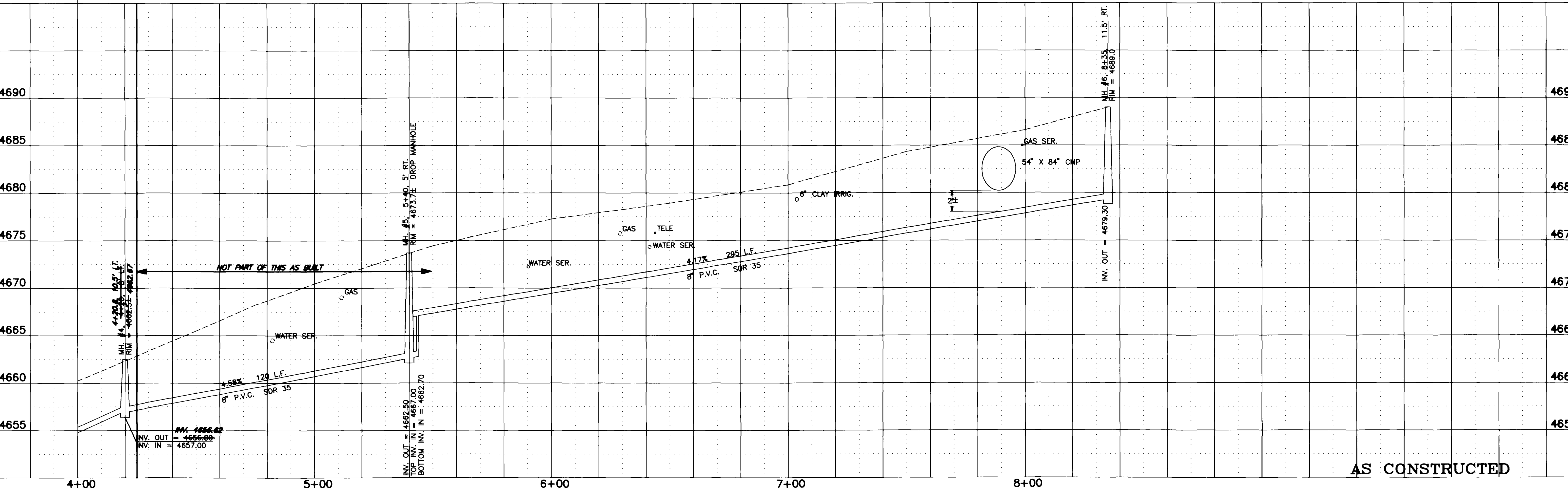
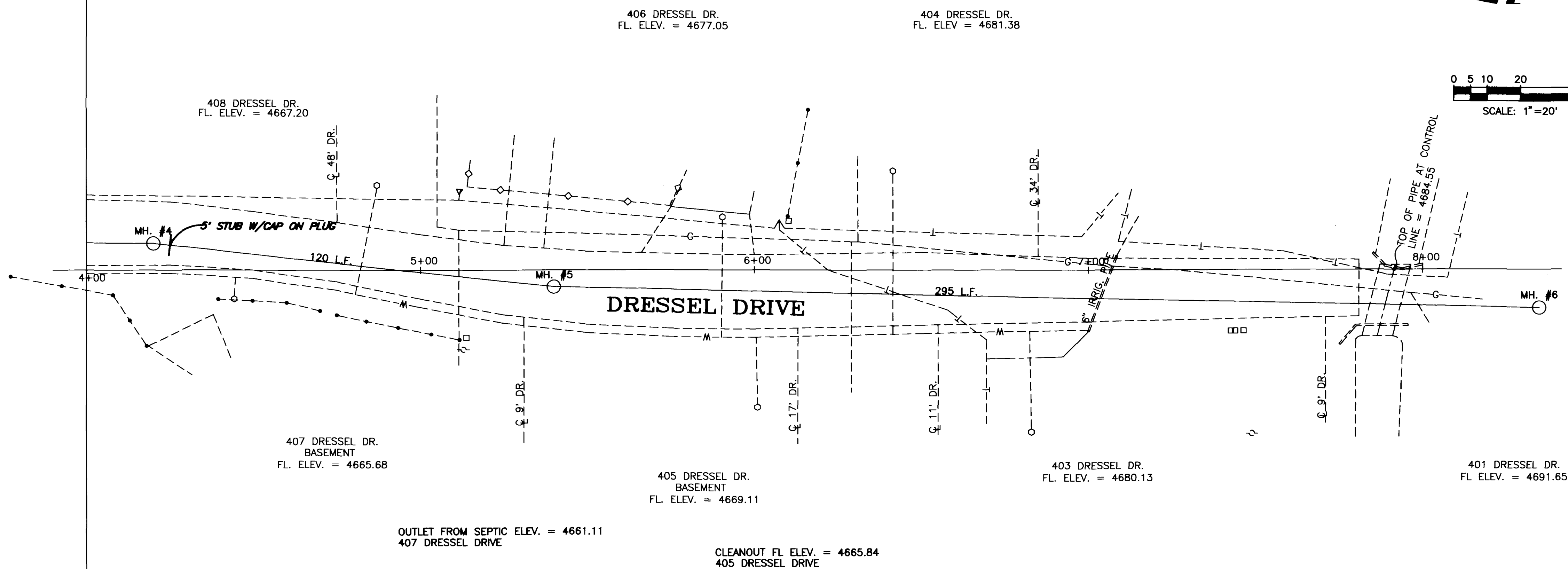
SCALE	
PLAN	PROFILE
HORIZ. 1"=20'	HORIZ. 1"=20'
	VERT. 1"=5'

DEPARTMENT OF PUBLIC WORKS AND UTILITIES
ENGINEERING DIVISION
CITY OF GRAND JUNCTION, COLORADO

DRESSEL DRIVE EXTENSION
Plan & Profile

SHEET NO.	1
OF	2
FILE NO.	DRESSEL5.DWG

CONSTRUCTION NOTES:
 1 SERVICE CONNECTIONS TO BE INSTALLED BY PROPERTY OWNERS.
 INSTALL FULL BODY WYES W/CAPS AT TIME OF CONSTRUCTION
 IF POSSIBLE.



AS CONSTRUCTED

REVISION	DESCRIPTION	DATE
1	"AS BUILTS" PER J.W.C.	6/94

DRAWN BY	L. MARTIN	DATE	3/93
CHECKED BY	J.W.C.	DATE	3/93
APPROVED BY	J.W.C.	DATE	3/93
FIELD BOOK NO.		PAGE	

SCALE	
PLAN	PROFILE
HORIZ. 1"=20'	HORIZ. 1"=20'
	VERT. 1"=5'

DEPARTMENT OF PUBLIC WORKS AND UTILITIES
 ENGINEERING DIVISION
 CITY OF GRAND JUNCTION, COLORADO

DRESSEL DRIVE EXTENSION
 Plan & Profile

SHEET NO.	2
OF	2
FILE NO.	DRESSEL4.DWG