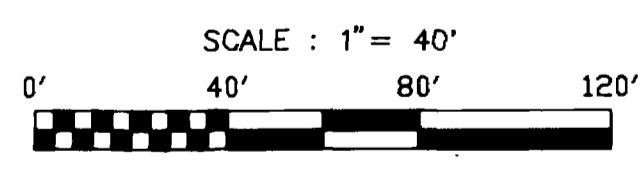
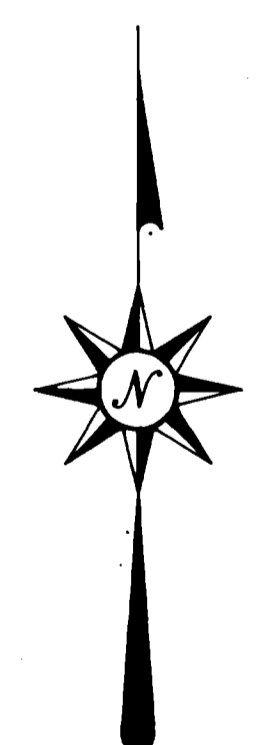
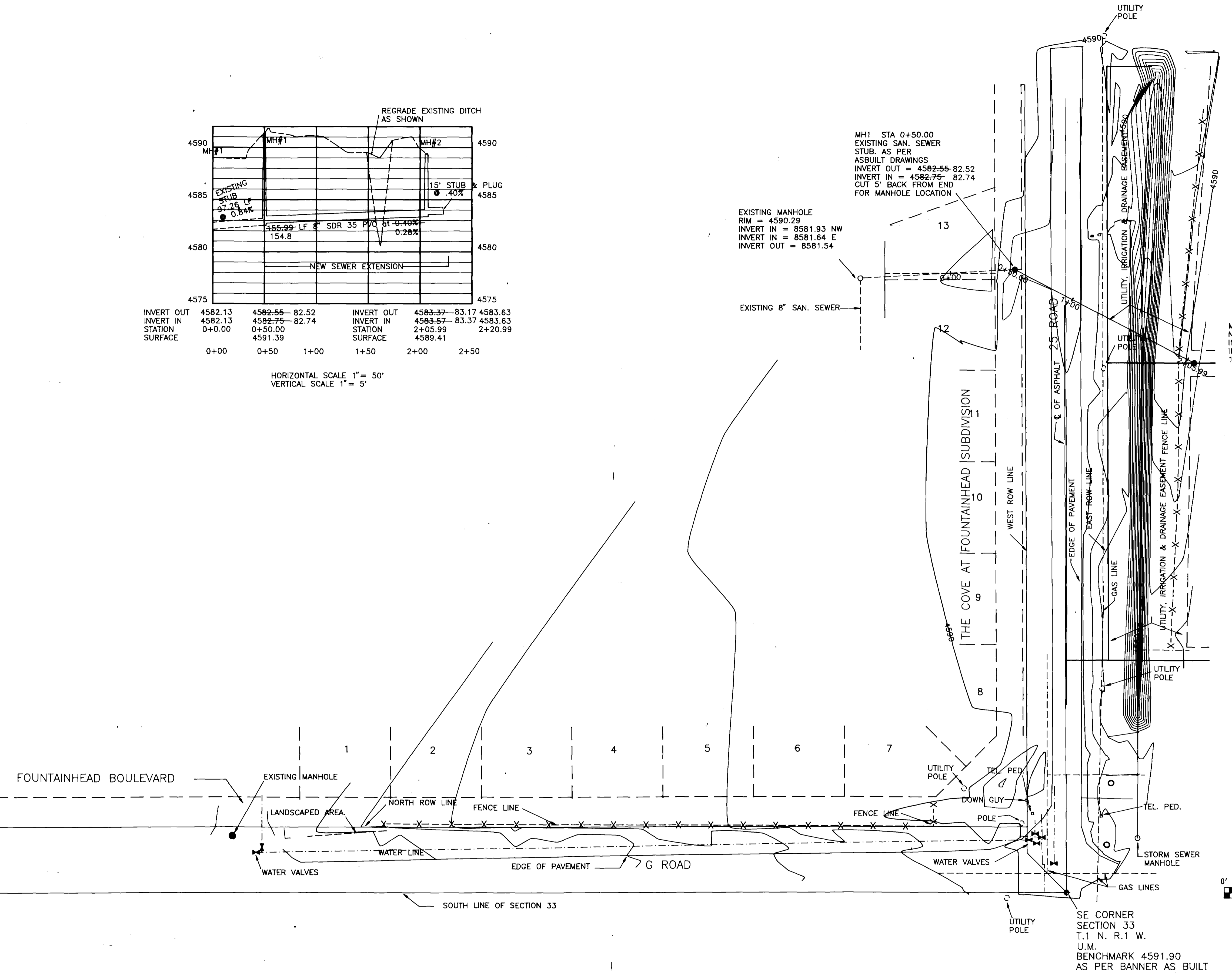


MH1 STA 0+50.00  
EXISTING SAN. SEWER  
STUB AS PER  
ASBUILT DRAWINGS  
INVERT OUT = 4582.55-82.52  
INVERT IN = 4582.75-82.74  
CUT 5' BACK FROM END  
FOR MANHOLE LOCATION

EXISTING MANHOLE  
RIM = 4590.29  
INVERT IN = 8581.93 NW  
INVERT IN = 8581.64 E  
INVERT OUT = 8581.54

MH2 STA 2+05.99  
NEW SAN. SEWER MANHOLE  
INVERT OUT = 4583.37-83.17  
INVERT IN = 4583.57-83.37  
15' STUB OUT



NOTE:  
ALL LANDSCAPED AREAS DISTURBED BY THE CONSTRUCTION SHALL BE RETURNED TO THE EXISTING CONDITIONS AS THEY WERE PRIOR TO CONSTRUCTION. TO INCLUDE BUT NOT LIMITED TO FENCES, PLANTINGS AND BERMS.

REVISED 12/21/94  
REVISED 01/11/95

# RECORD DRAWING

## NO. 1 OF 1

RECORD DRAWING 4/24/95  
JOS

	<b>SEWER PLAN &amp; PROFILE</b> <b>POWELL SEWER EXTENSION</b> <b>LANDesign, Ltd.</b> ENGINEERS SURVEYORS PLANNERS
	<small>200 NORTH 8TH STREET SUITE 102 GRAND JUNCTION, COLORADO 81501 (303) 244-8180</small>
	<small>PROJECT NO. 94107/94107 DRAWN BY SHEET OF DATE: DECEMBER, 1994 JOS SW-1 1</small>
	<small>PHILIP M. HART REGISTERED PROFESSIONAL ENGINEER P.E. NO. 18346</small>

Rec 4-25-95 02086700.tif