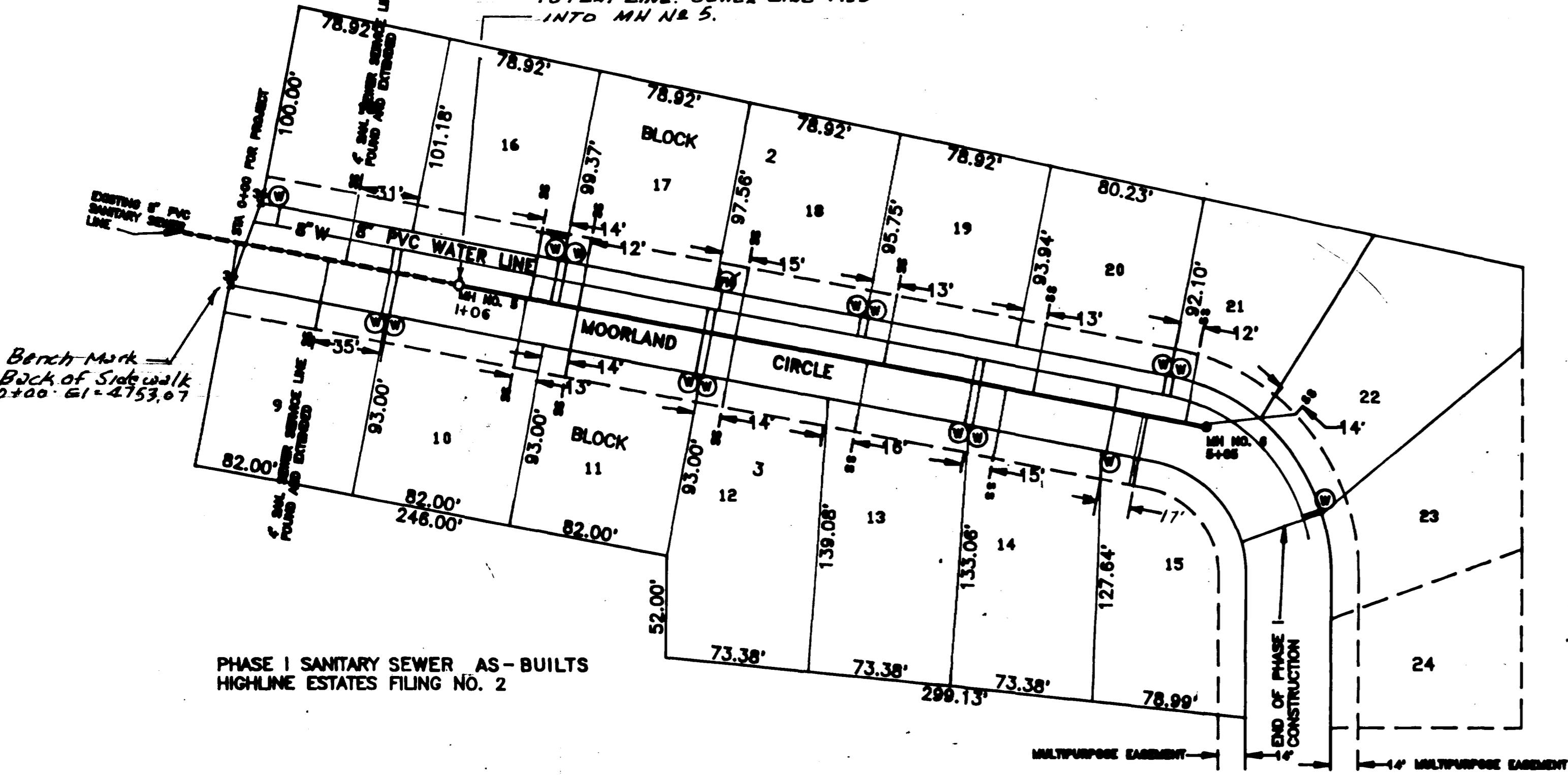


NOTE: EXISTING 8" PVC Replaced From STA 1+06 TO 1+26 DUE TO FLAT LINE. SEWER LINE TIED INTO MH N# 5.



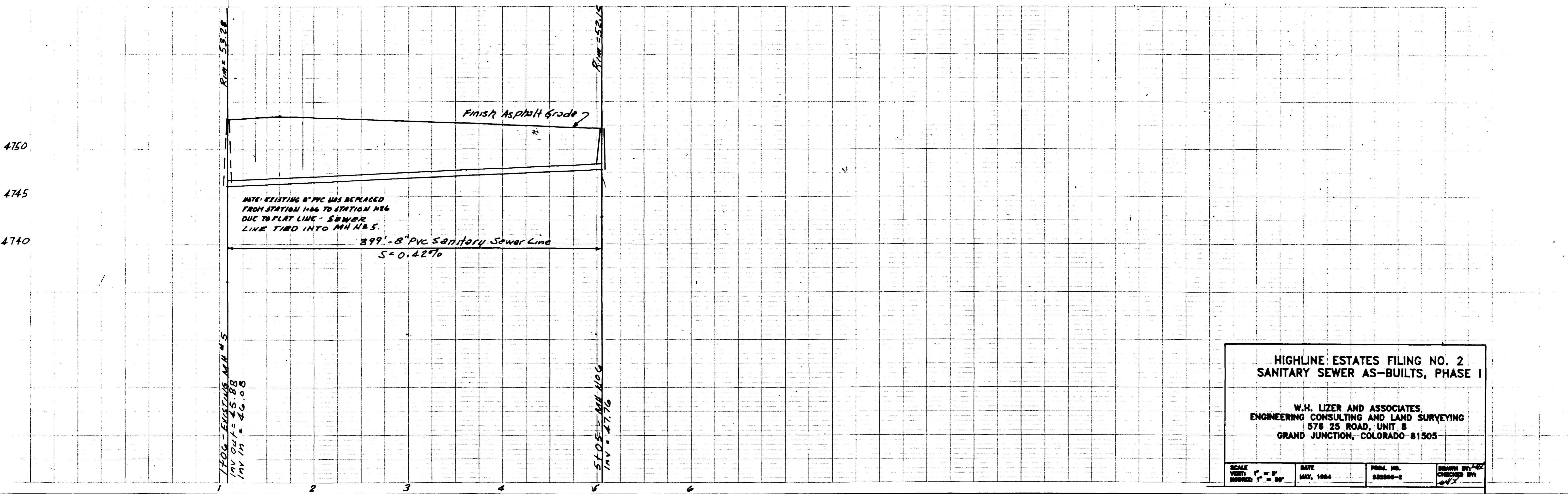
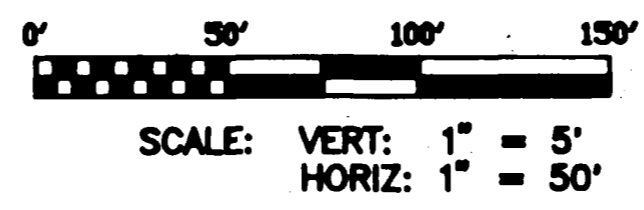
NOTES:

1. THE ORIGINAL SANITARY SEWER DESIGN WAS BY COLORADO WEST ENGINEERING AND WAS ACCEPTED FOR CONSTRUCTION BY CENTRAL GRAND VALLEY SANITATION DISTRICT'S ENGINEER, WESTWATER ENGINEERING.
2. THE EXISTING 8" SANITARY SEWER LINE WAS REPLACED FROM STATION 1+06 TO 1+26 AT BEGINNING OF CONSTRUCTION PHASE DUE TO FLAT LINE.

CONSTRUCTION AND AS-BUILTS ACCEPTED BY _____ DATE: _____
AND APPROVED, CENTRAL GRAND VALLEY SANITATION DISTRICT.

LEGEND

- ⊙ WATER METER—TYPICALLY 2' FROM PROPERTY LINE
- SS SANITARY SEWER SERVICE LINE—DISTANCE AS SHOWN FROM PROPERTY LINE
- ⊕ FIRE HYDRANT
- 14' MULTIPURPOSE EASEMENT



**HIGHLINE ESTATES FILING NO. 2
SANITARY SEWER AS-BUILTS, PHASE I**

W.H. LIZER AND ASSOCIATES,
ENGINEERING CONSULTING AND LAND SURVEYING
576 25 ROAD, UNIT 8
GRAND JUNCTION, COLORADO 81505

SCALE VERT: 1" = 5' HORIZ: 1" = 50'	DATE MAY, 1994	PROJ. NO. 032800-2	DRAWN BY: WJL CHECKED BY: WJL
---	-------------------	-----------------------	----------------------------------