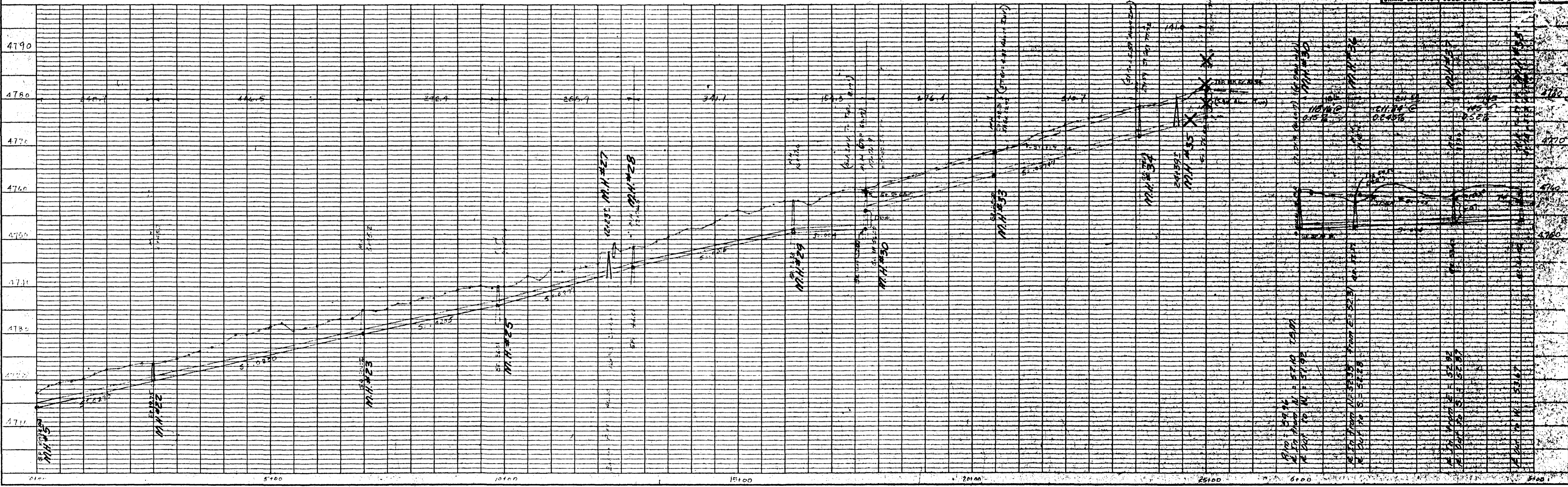


TIARA RADO SUBDIVISION
 SEWER PLAN & PROFILE
 MESA COUNTY, COLORADO
 ENGINEER: _____ DRAWN BY: _____ TRACED BY: _____
 GRAND JUNCTION, COLO. 815-253-2100 1/28/77



In accordance with Colorado State Senate Bill 172, paragraph 9-1.5-103, the contractor shall provide notification to all utility companies two (2) business days prior to start of excavation for location & coordination of underground utilities. Underground Utilities Location Telephone Number is 245-2555.

South Broadway

N89°36'00"W

NOTES:

- All construction shall be in accordance with City of Grand Junction Sanitary Sewer details - Drawings SS-1 and shall conform to City of Grand Junction "Standard Specifications for Construction of Water Lines, Sanitary Sewers, Storm Drainage and Irrigation Systems", 1981, and City of Grand Junction, General Contract Conditions for Public Works and Utilities Construction GC-37, GC-50 and GC-65.
- All road repair shall be in accordance with Mesa County Plans & Specifications for Road & Bridge Design & Construction.

Designed By: *[Signature]*

Date: *Nov 30, 1983*

Approved By: *[Signature]*

Date: *Mar 30, 1983*



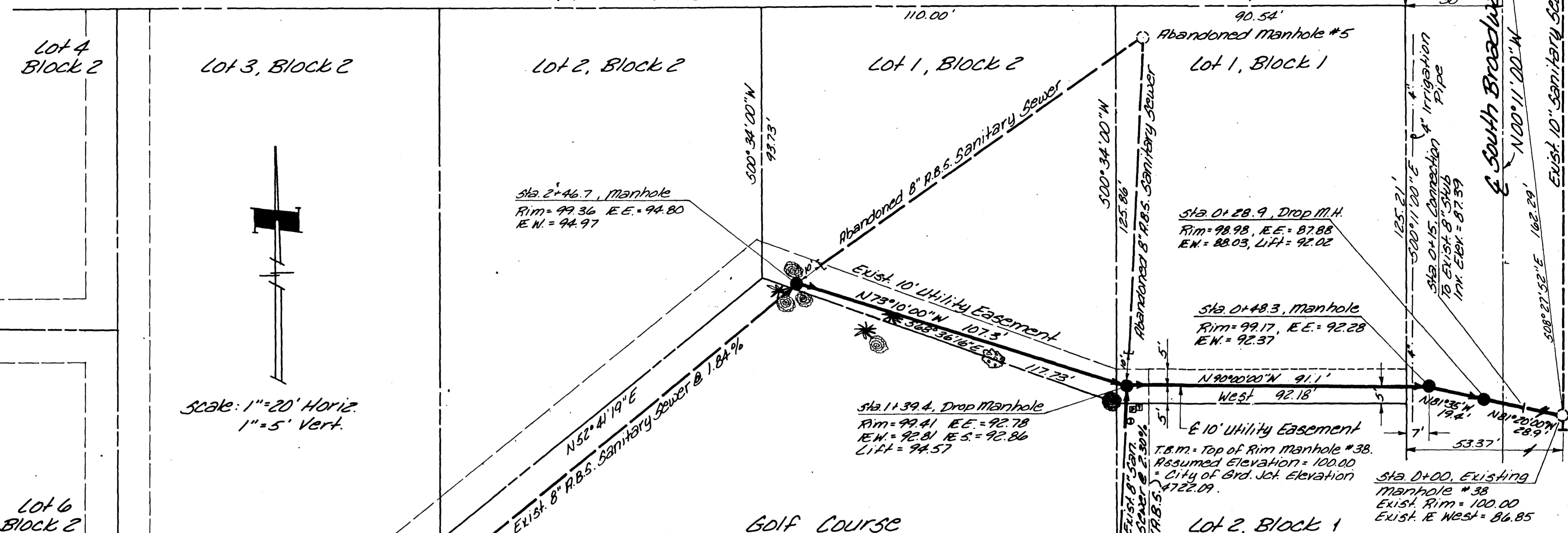
Scale: 1"=20' Horiz.
1"=5' Vert.

CERTIFICATION

In accordance with the City of Grand Junction specifications and based on an actual field test of this project, I hereby certify that the exfiltration rates, as stated in the standard specifications for the City of Grand Junction were not exceeded.

By: *[Signature]* E. Kolar Date: *2-1-84*

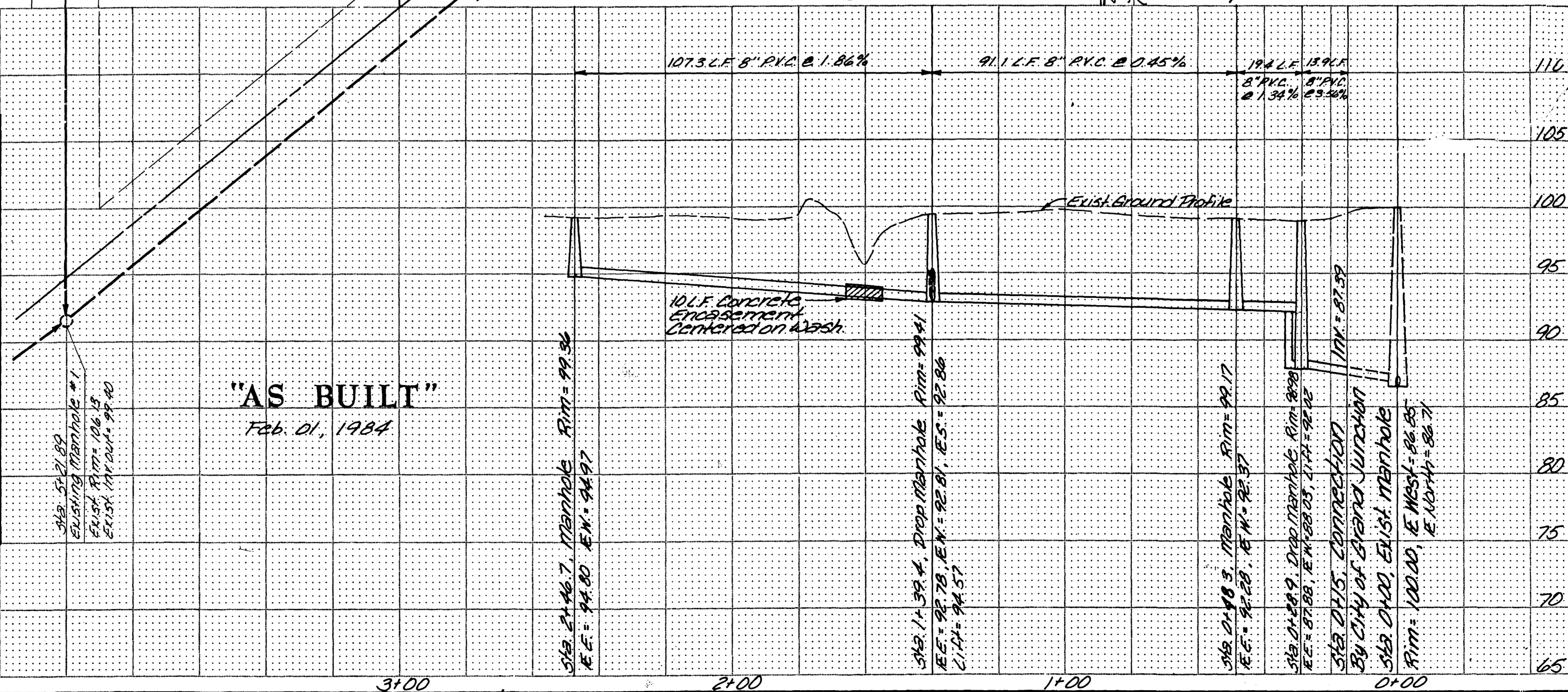
Tiara Rado Subdivision



GOLF COURSE

Approximate Summary of Quantities

Description	Unit	Quant.
Std. Manhole (1' to 1')	ea.	1
8" P.V.C. San. Sewer	L.F.	241.7
Concrete Encasement	L.F.	10
Std. Manhole (1.5' to 10')	ea.	1
8" x 8" x 8" P.V.C. Tee	ea.	2
8" P.V.C. 90° Elbow	ea.	2
Std. Drop Manhole (10' to 15')	ea.	1
Std. Drop Manhole (1.5' to 10')	ea.	1
Connection to Exist. 8"	ea.	1



"AS BUILT"
Feb. 01, 1984

ARMSTRONG & ASSOCIATES, INC.
 881 Reed Avenue
 Grand Junction, Colorado 81501
 (303) 241-3861

Architects
 Engineers
 Planners
 Surveyors
 Soil Testing
 Material Testing
 U.S. Mineral Surveyors
 Geotechnical Engineers

Tiara Rado Subdivision
 Sanitary Sewer
 Connection

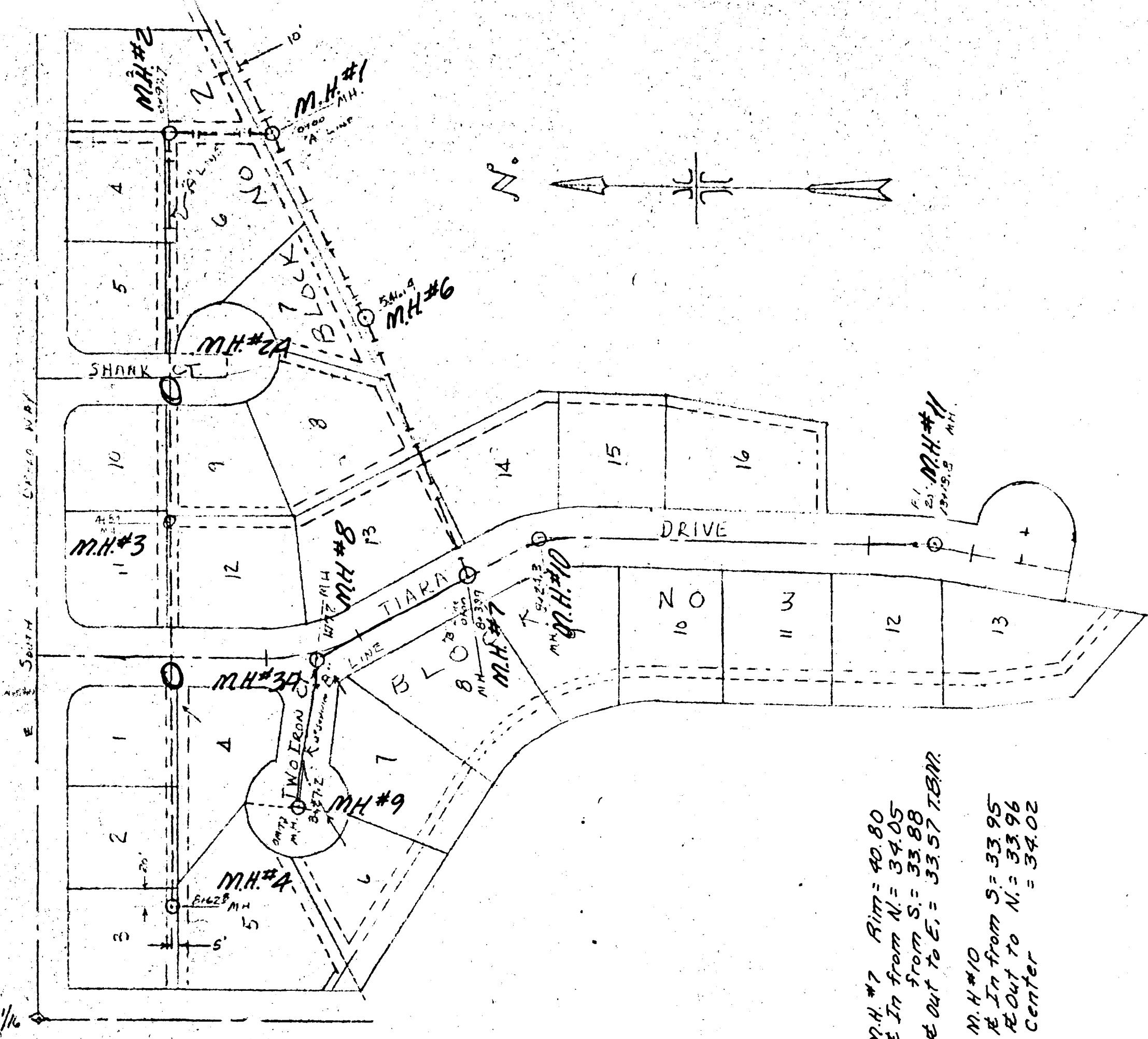
Project No: 834227
 Date: Nov. 30, 1983
 Revisions: 12-8-83
 Revise Line Location, added Quantities
 Drawn: JDC
 Checked: AH
 Approved:

Sanitary Sewer
 Plan & Profile

Sheet: 1 of 1

02087202.tif

As of 6-12-85 sewers not yet accepted
 Am. Indevy working with Ken Henry & Walt to
 try & get short stretch on Rado Dr. fixed

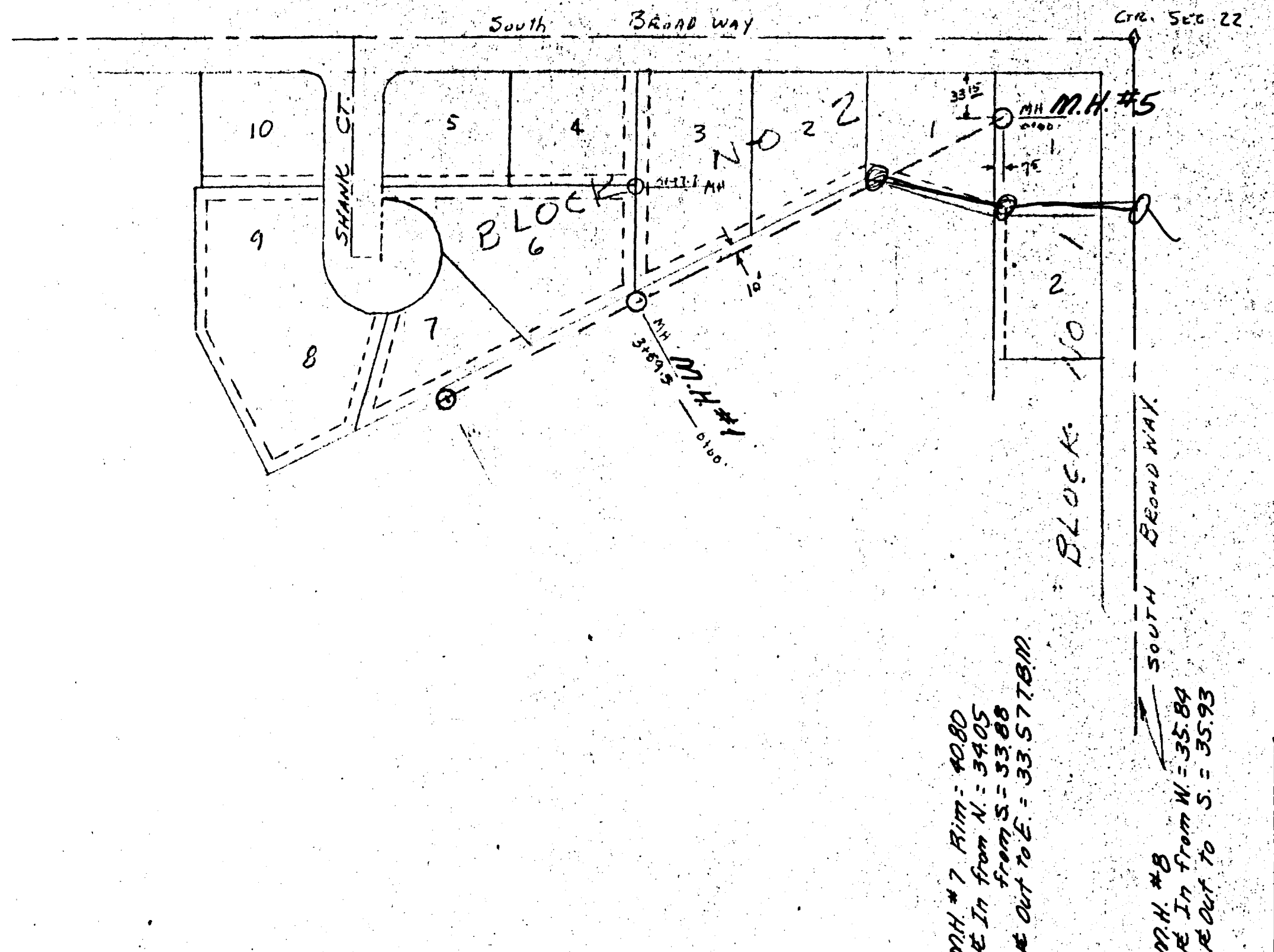


M.H. #7 RIM = 40.80
 In from N = 34.05
 from S = 33.88
 Out to E = 33.57 T.B.M.

M.H. #10
 In from S = 33.95
 Out to N = 33.96
 Center = 34.02

M.H. #11
 In from S = 40.81
 Out to N = 40.73

SCALE 1" = 100'



M.H. #7 RIM = 40.80
 In from N = 34.05
 from S = 33.88
 Out to E = 33.57 T.B.M.

M.H. #9
 In from W = 35.84
 Out to S = 35.93

**TIARA RADO SUBDIVISION
 SEWER PLAN & PROFILE**

MESA COUNTY, COLORADO

ENGINEER _____ DRAWN _____ TRACED _____
 GRAND JUNCTION, COLO. DWS. 1-563-E C 1/29/71

