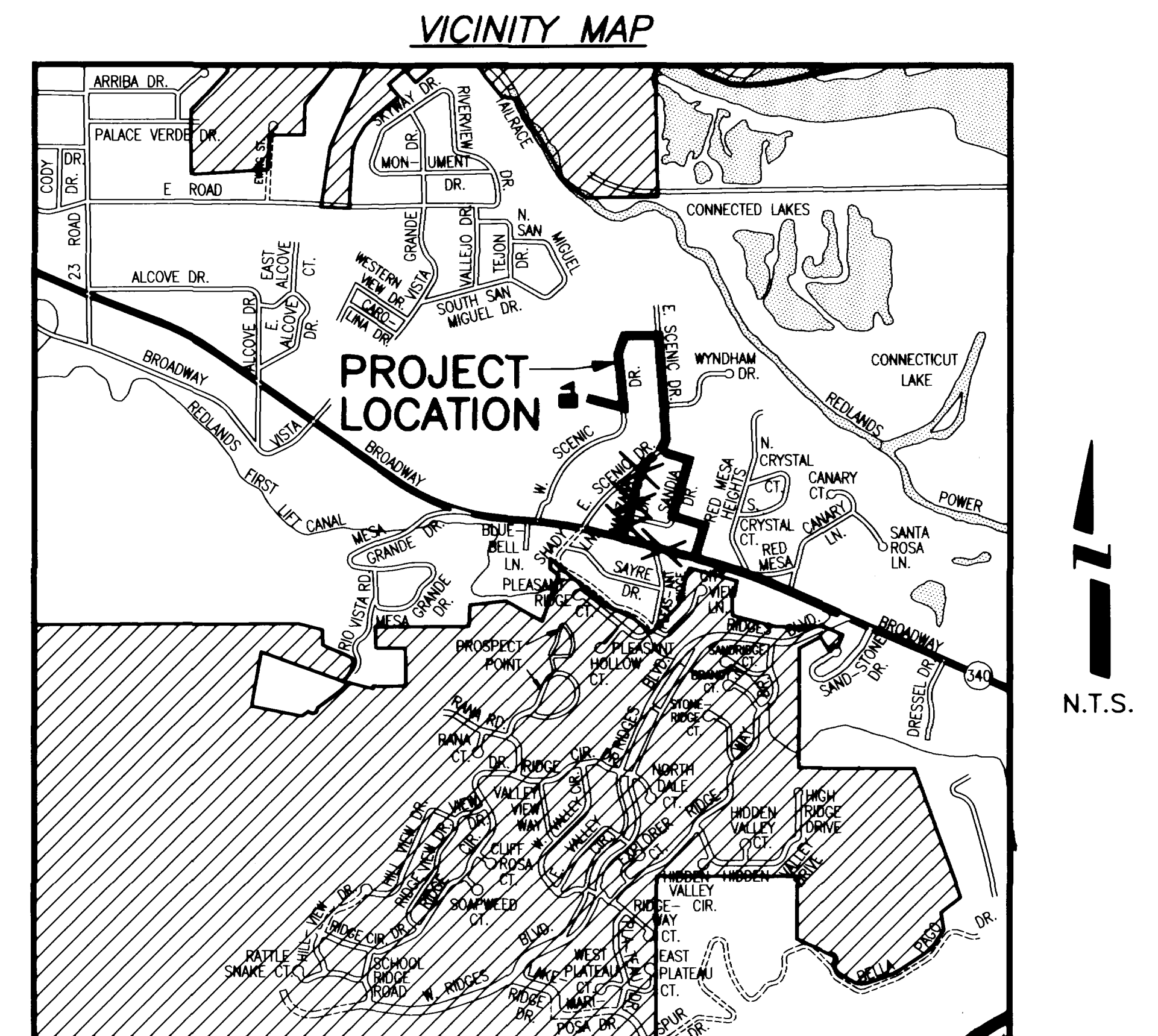


# SCENIC SCHOOL INTERCEPTOR

1994

1. Cover Sheet
2. Drafting Standards & Abbreviations
3. Summary of Approximate Quantities
- 4.-11. Plans & Profiles
12. Lift Station Details
13. Standard Sanitary Sewer Details  
"Exhibit I"



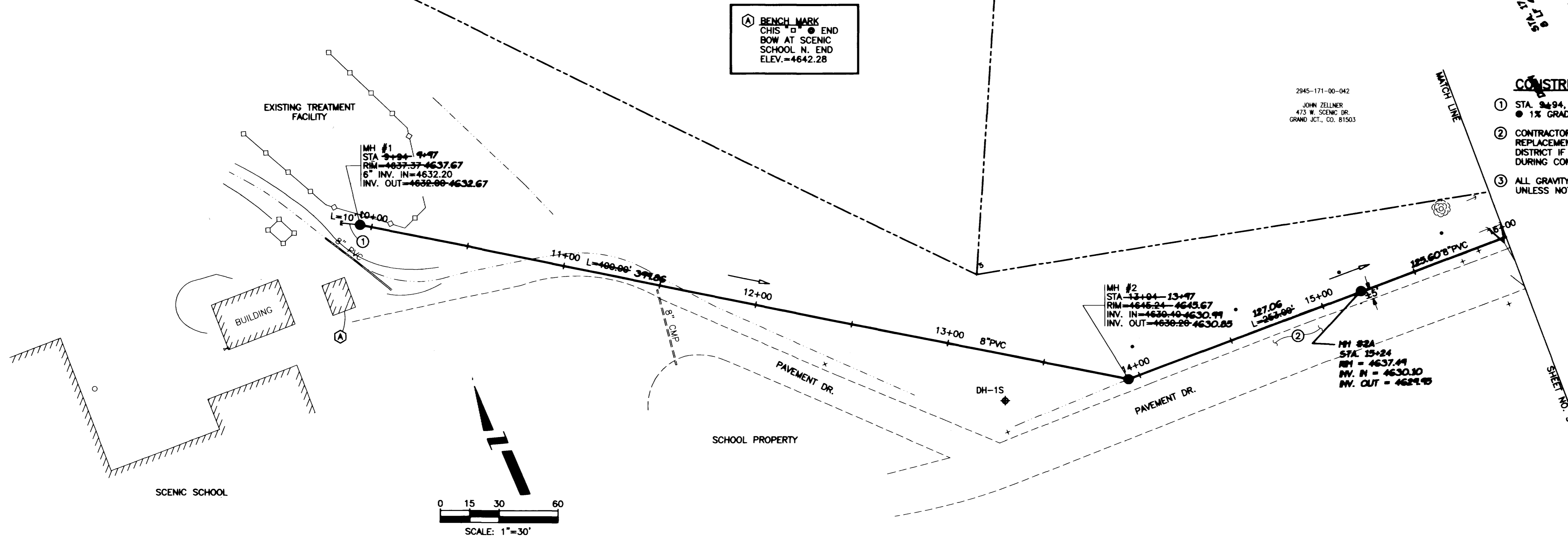
AS CONSTRUCTED

8-3-85

*City of Grand Junction, Colorado*

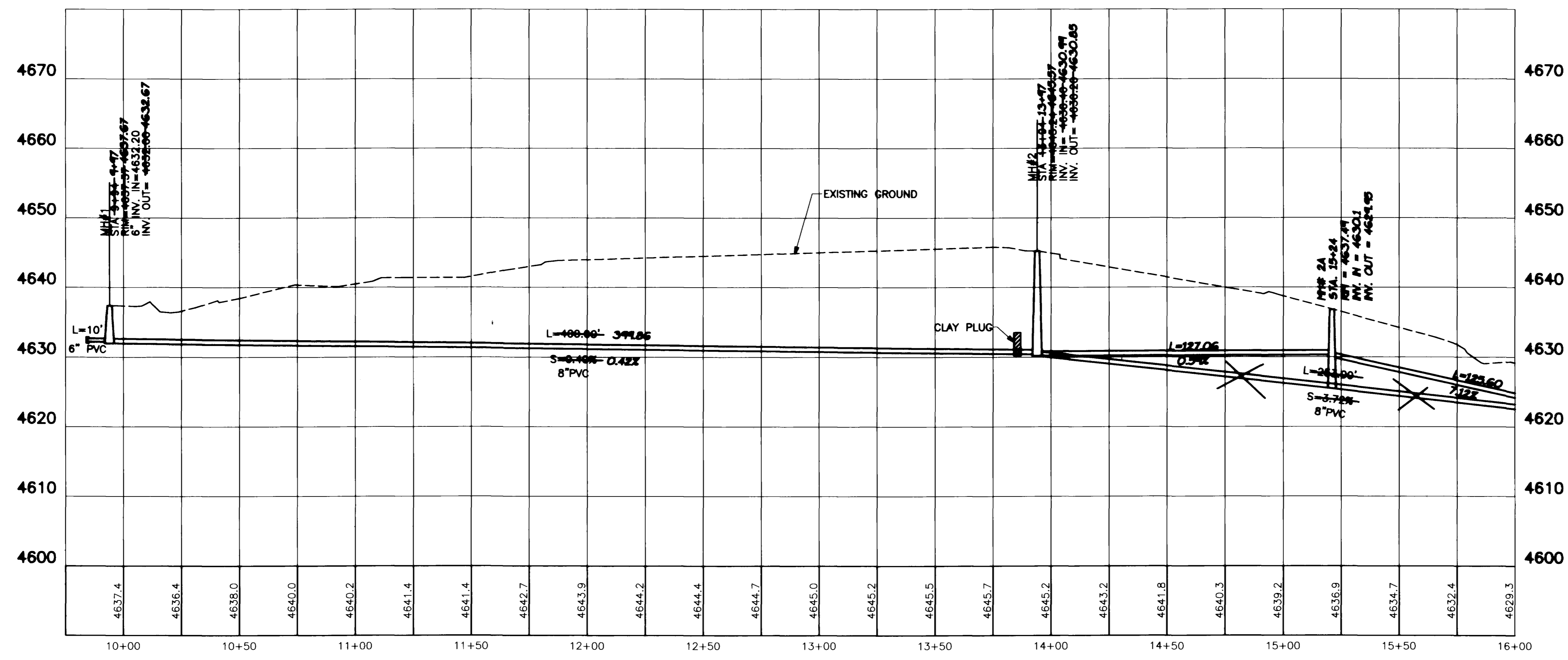
*Department of Public Works & Utilities*

*Engineering Division*



2945-171-00-042  
 JOHN ZELLNER  
 473 W. SCENIC DR.  
 GRAND JCT., CO. 81503

- CONSTRUCTION NOTES:**
- ① STA. 9+84, 6" STUB, 10'-6" SDR 35 PVC W/PLUG @ 1% GRADE.
  - ② CONTRACTOR SHALL BE RESPONSIBLE FOR PAVEMENT REPLACEMENT AT NO COST TO THE CITY OR SCHOOL DISTRICT IF THE PAVEMENT IS IN ANY WAY DAMAGED DURING CONSTRUCTION.
  - ③ ALL GRAVITY SEWER MAIN SHALL BE 8" PVC SDR 35 UNLESS NOTED DIFFERENTLY.



MANHOLE LOCATION DATA					
MH	STATION	NORTHING	EASTING	BEARING	DISTANCE
#1	9+84	10242.53	48442.27	S55°28'30"E	400.00'
#2	13+84	10015.84	48771.80	S87°35'08"E	253.00'
#3	18+47	10004.97	50024.48	N05°37'03"W	443.00'
#4	20+80	10445.85	48881.10	S89°30'28"E	114.00'
#5	22+04	10550.27	50024.48	S89°50'58"E	88.00'
#6	22+73	10550.27	50353.84	S89°50'58"E	258.00'
#7	25+31	10550.27	50388.35	S05°54'29"E	345.00'
#8	28+76	10207.10	50388.35	S88°12'21"W	10.00'
#9	28+88	10203.38	50380.07	S06°47'38"E	277.00'
#10	31+83	9928.33	50412.84	S04°45'19"E	145.00'
#11	33+08	9783.83	50424.86	S04°22'13"W	205.00'
#12	35+13	9578.42	50408.24	S75°2'41"W	80.00'
#13	35+83	9501.78	50388.35	S46°28'10"W	244.00'
#14	38+37	9333.78	50388.35	S15°32'23"W	241.00'
#15	40+78	9107.58	50148.53	S15°32'23"W	184.00'
#16	42+72	8814.86	50086.56	S15°32'23"W	205.00'
#17	44+77	8717.15	50041.64	S73°01'38"E	252.00'
#18	47+28	8643.58	50282.88	S74°38'20"E	378.00'
#19	51+07	8543.56	50647.19	S76°11'48"E	334.80'
#20	54+42	8463.88	50872.32	S75°07'53"E	170.00'
#21	58+12	8420.05	51136.63	S71°08'25"E	85.00'
#22	58+77	8388.04	51198.14	S82°48'07"E	125.00'
#23	58+02	8341.85	50388.35	S86°29'47"E	274.00'
#24	60+78	8232.38	50590.56	S82°38'07"E	180.00'
#25	62+56	8148.88	51720.41	S85°33'00"E	329.00'
#26	65+85	8013.86	52018.81		

**AS CONSTRUCTED**

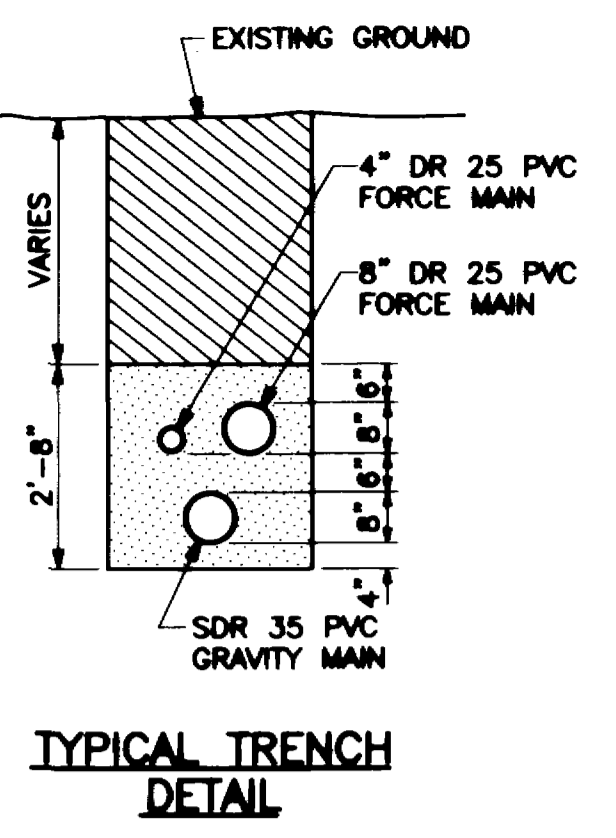
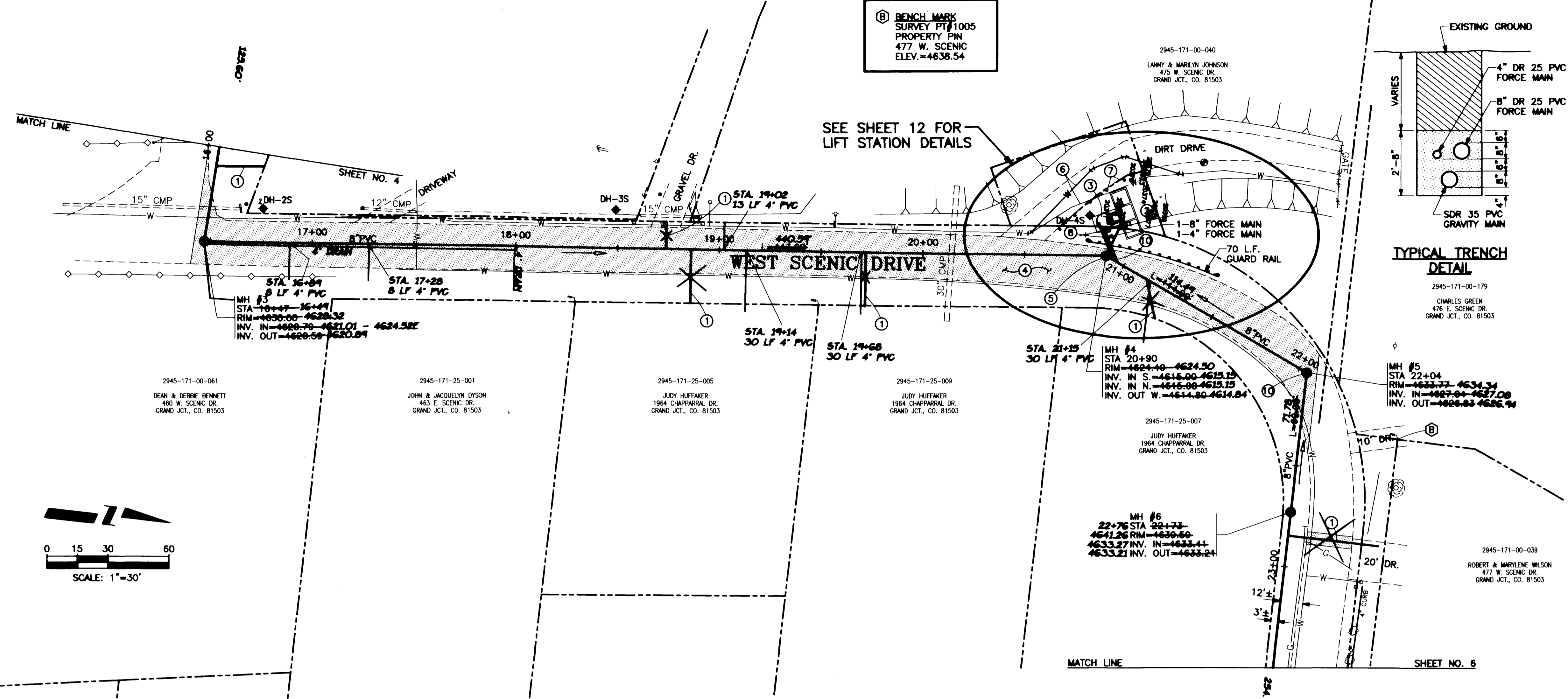
REVISION	DESCRIPTION	DATE	DESIGNED BY	TKH	DATE	1-95
REVISION			DRAWN BY	C.A.K.	DATE	10/4/93
REVISION			CHECKED BY		DATE	
REVISION			APPROVED BY		DATE	
REVISION			POINT FILE	SCENIC.ASC	DATE	

**DEPARTMENT OF PUBLIC WORKS AND UTILITIES**  
**ENGINEERING DIVISION**  
**CITY OF GRAND JUNCTION, COLORADO**

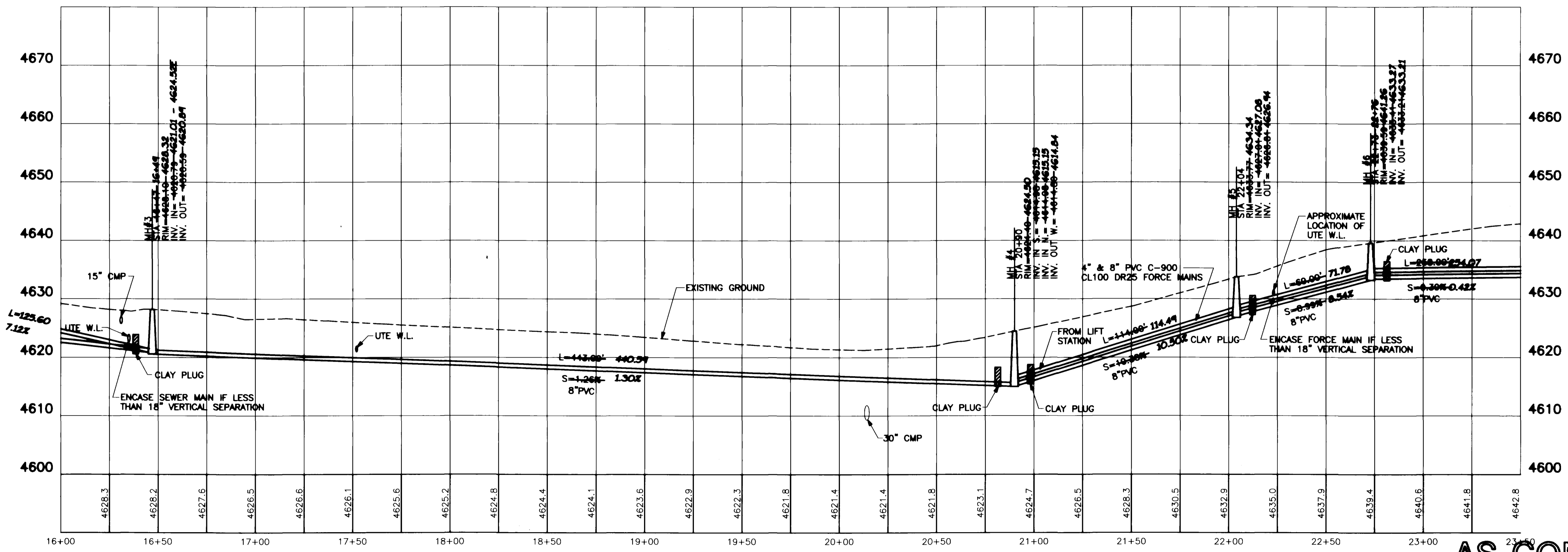
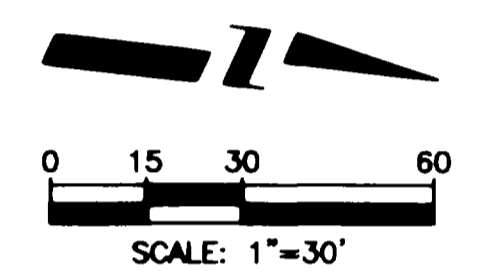
**SCENIC SCHOOL INTERCEPTOR**  
**STA. 10+00 TO STA. 16+00**  
**Plan & Profile**

SHEET NO. 4  
 OF 13  
 FILE NO. SCENIC.DWG

(B) BENCH MARK  
SURVEY PT 1005  
PROPERTY PIN  
477 W. SCENIC  
ELEV.=4638.54



- CONSTRUCTION NOTES:**
- ① 4" WYE AND SERVICE TO PROPERTY LINE.
  - ② 3-PHASE POWER TO LIFT STATION TO BE SUPPLIED BY OTHERS. CONTRACTOR RESPONSIBLE FOR CONNECTION AND HOOK-UP TO LIFT STATION.
  - ③ LIFT STATION WILL BE SUPPLIED BY OWNER. CONTRACTOR RESPONSIBLE FOR CONSTRUCTING WET WELL AND INSTALLING LIFT STATION WITH ALL APPURTENANCES AS SHOWN ON LIFT STATION DESIGN.
  - ④ LIMITS OF PAVEMENT REMOVAL & REPLACEMENT
  - ⑤ COAT INTERIOR OF MANHOLE AS PER SPECIAL CONDITIONS.
  - ⑥ RELOCATE 90 L.F. OF UTE WATER LINE. 2-22 1/2' BENDS 2-45' BENDS
  - ⑦ 5-4" STEEL GUARD POSTS FILLED AND SET IN CONCRETE. POSTS SET 3' IN GROUND AND STANDING 48" HIGH, 10' CENTER TO CENTER.
  - ⑧ ALL 4" & 8" FORCE MAIN SHALL BE C-900 CL1100 DR25 UNLESS NOTED DIFFERENTLY.
  - ⑨ FORCE MAINS TO BE INSTALLED 6" ABOVE GRAVITY MAIN IN SAME TRENCH. LINES TO DIVERGE AND GO AROUND MANHOLES WITH MINIMUM CLEARANCE OF 1.0' ADJACENT TO MANHOLES.
  - ⑩ THRUST BLOCKS OR MECHANICAL RESTRAINTS REQUIRED FOR ALL BENDS ON FORCE MAINS.
- NOTE: ACTUAL LOCATION OF SEWER SERVICES TO BE DETERMINED AT TIME OF CONSTRUCTION.



**AS CONSTRUCTED**

REVISION	DESCRIPTION	DATE
REVISION		
REVISION		
REVISION		

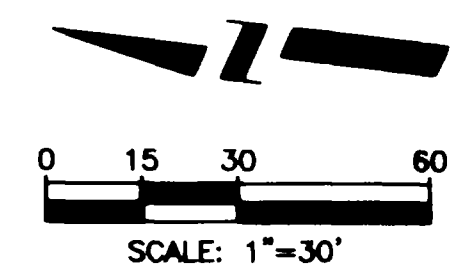
DESIGNED BY	TKH	DATE	1-95
DRAWN BY	C.A.K.	DATE	10/4/93
CHECKED BY		DATE	
APPROVED BY		DATE	
POINT FILE	SCENIC.ASC		

SCALE	
PLAN	PROFILE
HORIZ. 1"=30'	HORIZ. 1"=30'
	VERT. 1"=10'

DEPARTMENT OF PUBLIC WORKS AND UTILITIES  
ENGINEERING DIVISION  
CITY OF GRAND JUNCTION, COLORADO

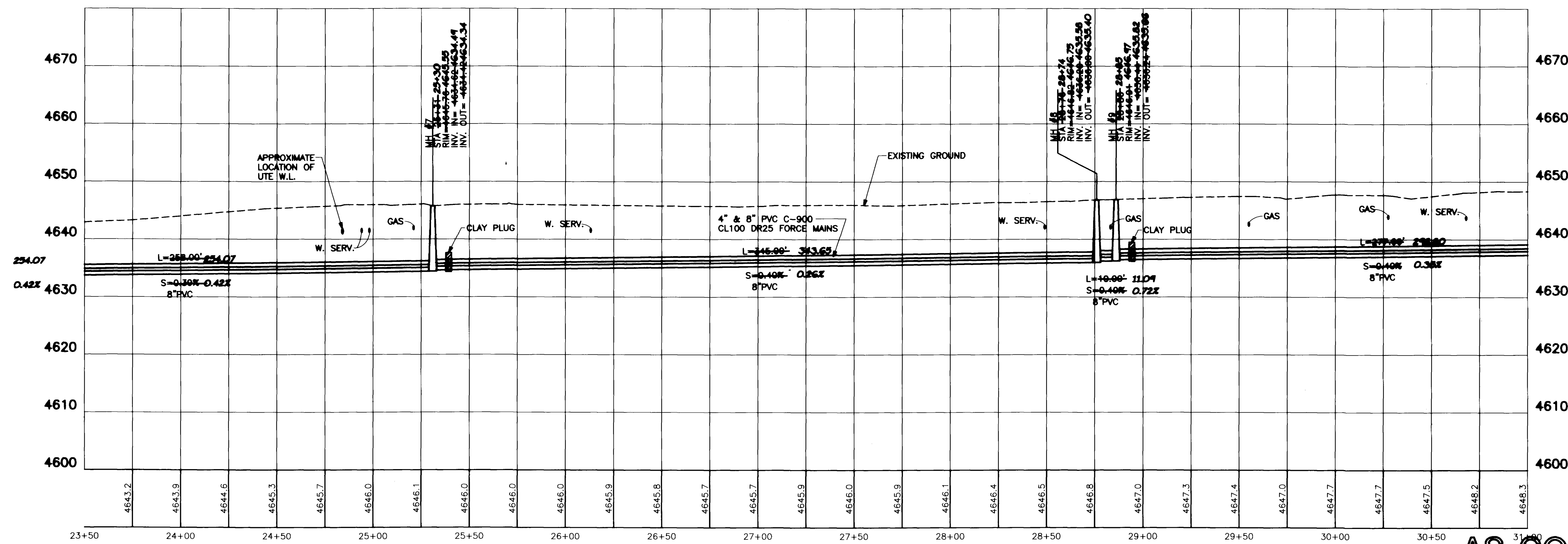
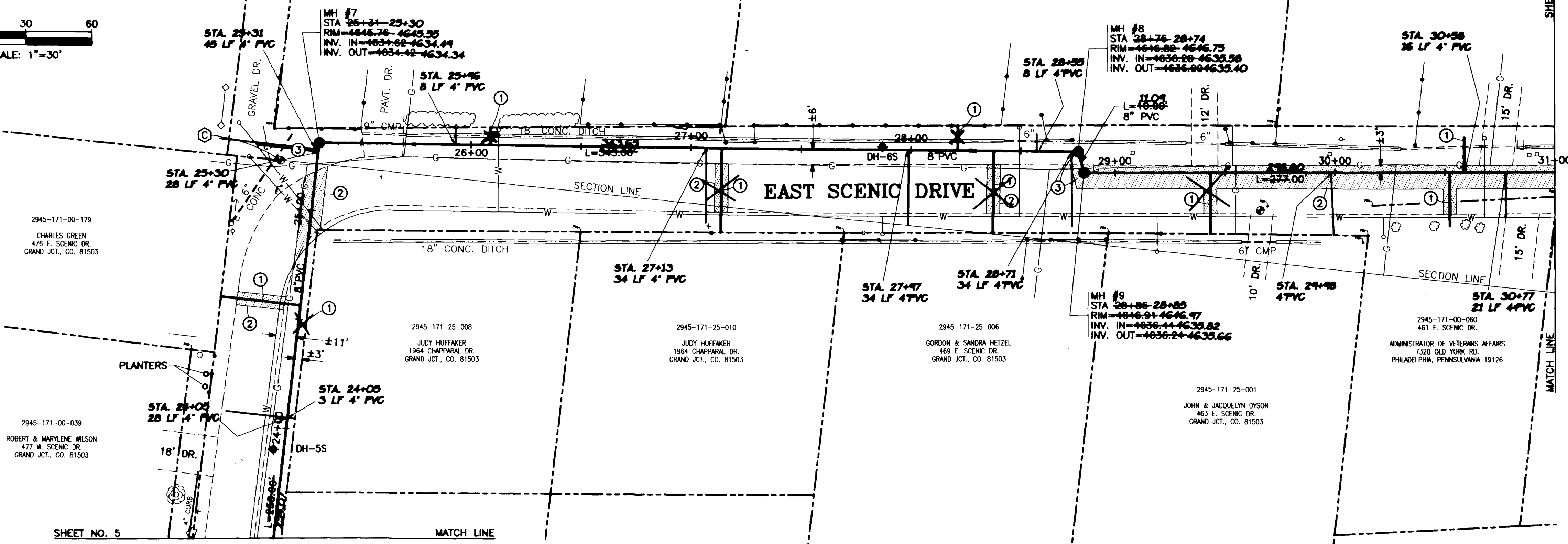
SCENIC SCHOOL INTERCEPTOR  
STA. 16+00 TO STA. 23+00  
Plan & Profile

SHEET NO.	5
OF	13
FILE NO.	SCENIC.DWG



Ⓢ BENCH MARK  
SURVEY PT. 11007  
MCSM N 1/16  
E LINE SEC. 17  
ELEV. = 4645.49

- CONSTRUCTION NOTES:**
- ① 4" WYE AND SERVICE TO PROPERTY LIMITS OF PAVEMENT REMOVAL & REPLACEMENT
  - ② LIMITS OF PAVEMENT REMOVAL & REPLACEMENT
  - ③ THRUST BLOCKS OR MECHANICAL RESTRAINTS REQUIRED FOR ALL BENDS ON FORCE MAINS.



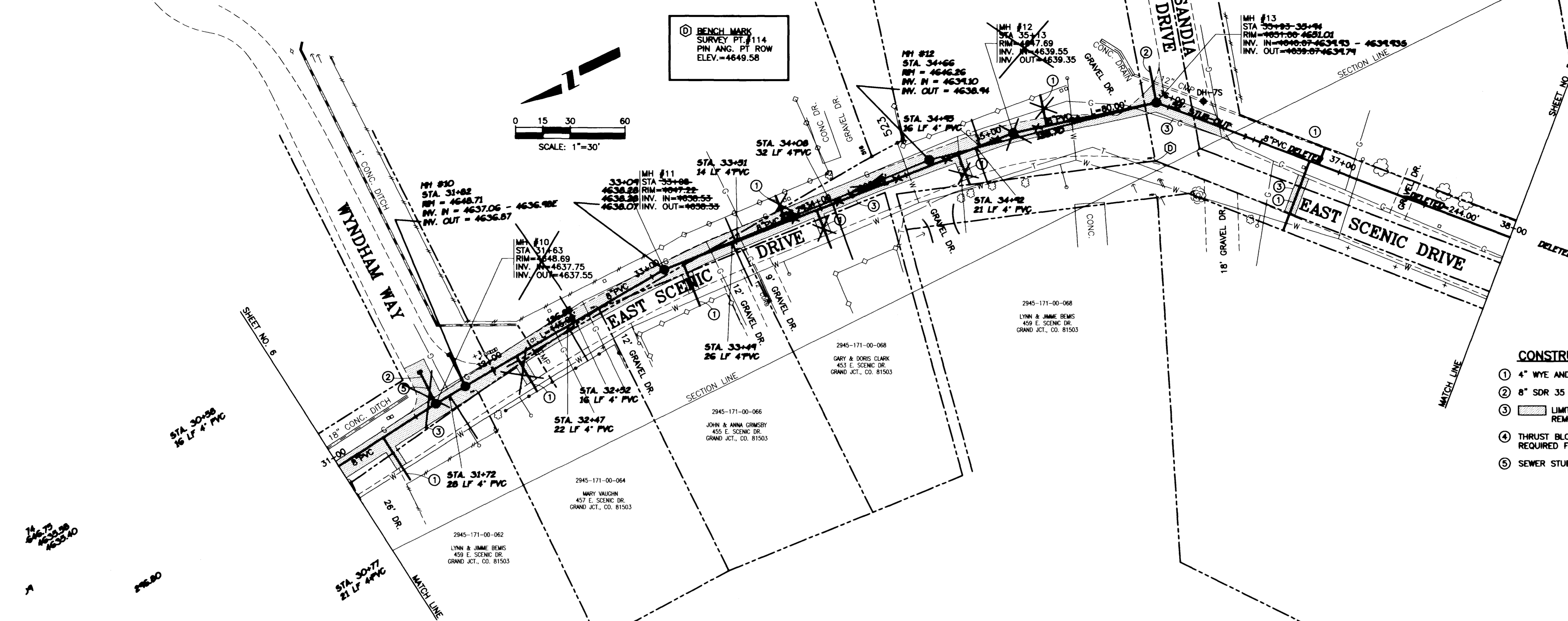
**AS CONSTRUCTED**

REVISION	DESCRIPTION	DATE	DESIGNED BY	DATE	SCALE
REVISION 1			TKH	1-95	PLAN 1"=30'
REVISION 2			C.A.K.	10/4/93	PROF. 1"=30'
REVISION 3					HORIZ. 1"=30'
REVISION 4					VERT. 1"=10'

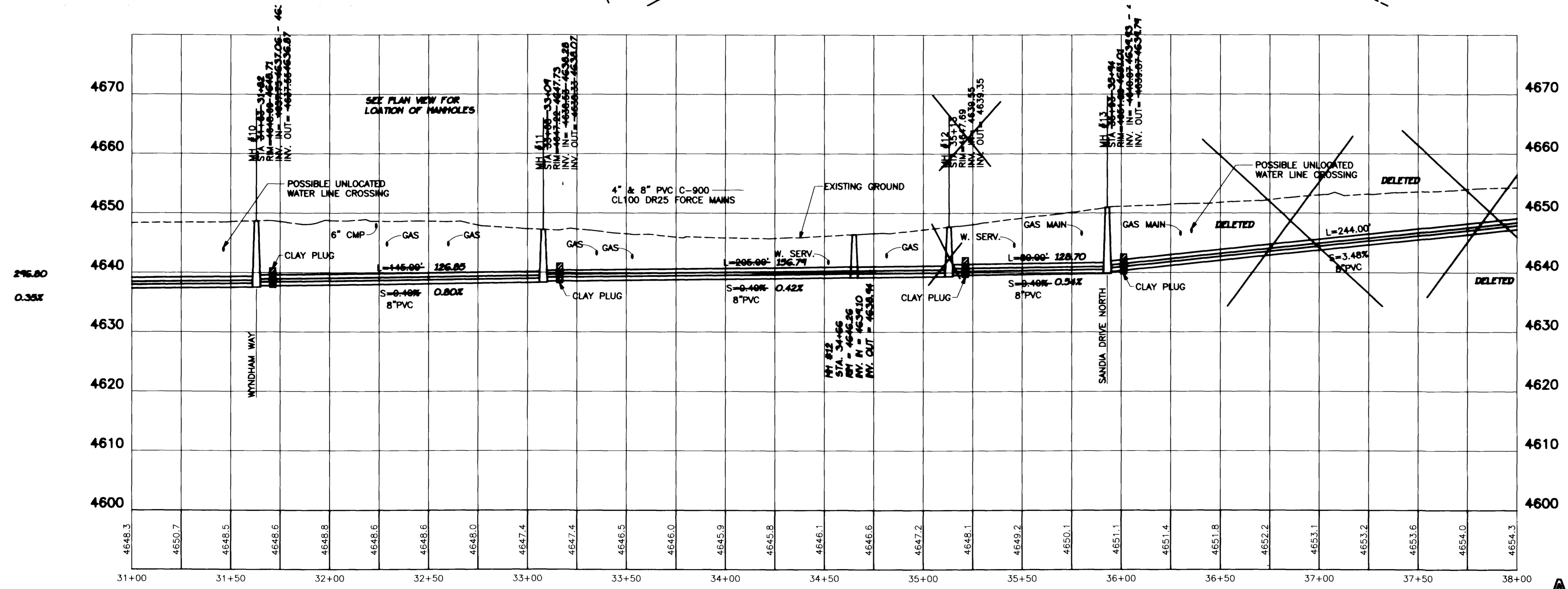
**DEPARTMENT OF PUBLIC WORKS AND UTILITIES  
ENGINEERING DIVISION  
CITY OF GRAND JUNCTION, COLORADO**

**SCENIC SCHOOL INTERCEPTOR  
STA. 23+50 TO STA. 31+00  
Plan & Profile**

SHEET NO. 8  
OF 13  
FILE NO. SCENIC.DWG



- CONSTRUCTION NOTES:**
- ① 4" WYE AND SERVICE TO PROPERTY LINE.
  - ② 8" SDR 35 PVC STUB. 20', 0.4% GRADE W/ PLUG.
  - ③ LIMITS OF PAVEMENT REMOVAL & REPLACEMENT
  - ④ THRUST BLOCKS OR MECHANICAL RESTRAINTS REQUIRED FOR ALL BENDS ON FORCE MAINS.
  - ⑤ SEWER STUB CROSSES UNDER GAS LINE.



**AS CONSTRUCTED**

REVISION	DESCRIPTION	DATE
△		
△		
△		
△		

DESIGNED BY	TKH	DATE	1-95
DRAWN BY	C.A.K.	DATE	10/4/93
CHECKED BY		DATE	
APPROVED BY		DATE	
POINT FILE	SCENIC.ASC		

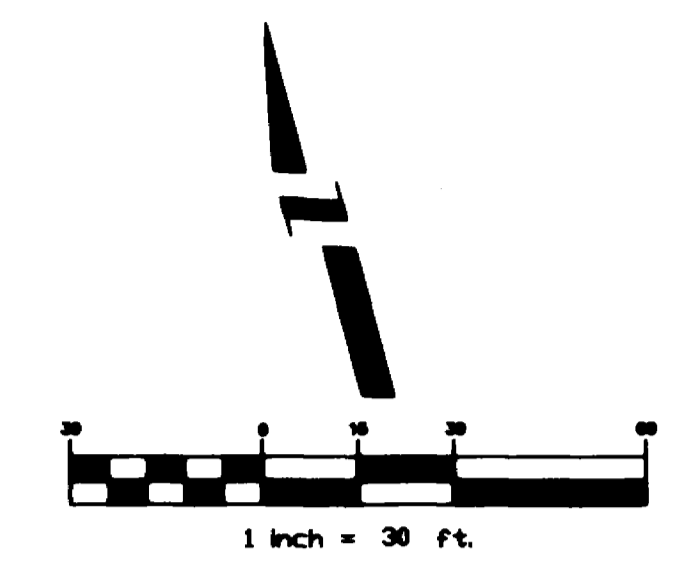
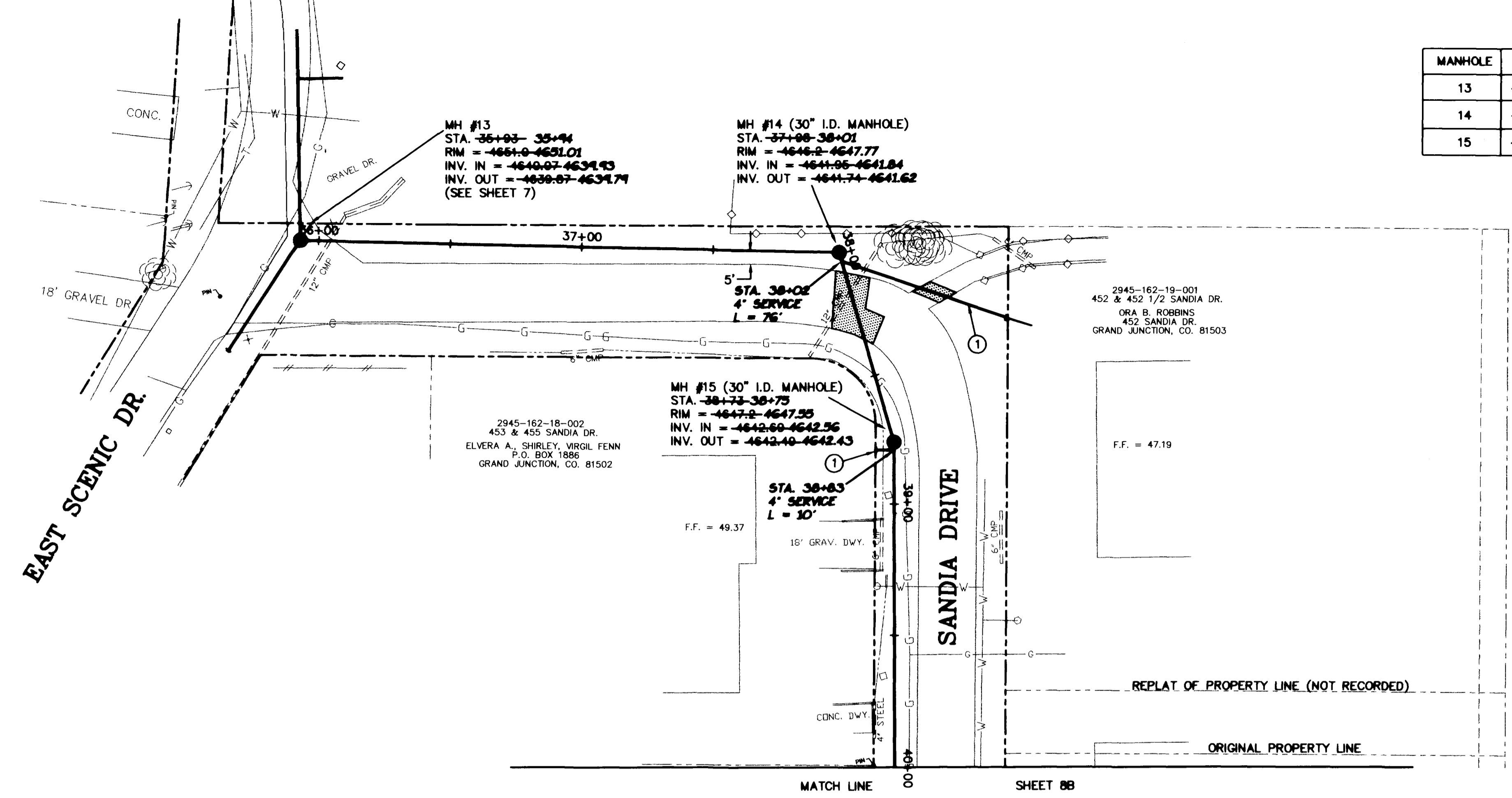
SCALE	
PLAN	PROFILE
HORIZ. 1"=30'	HORIZ. 1"=30'
	VERT. 1"=10'

**DEPARTMENT OF PUBLIC WORKS AND UTILITIES  
ENGINEERING DIVISION  
CITY OF GRAND JUNCTION, COLORADO**

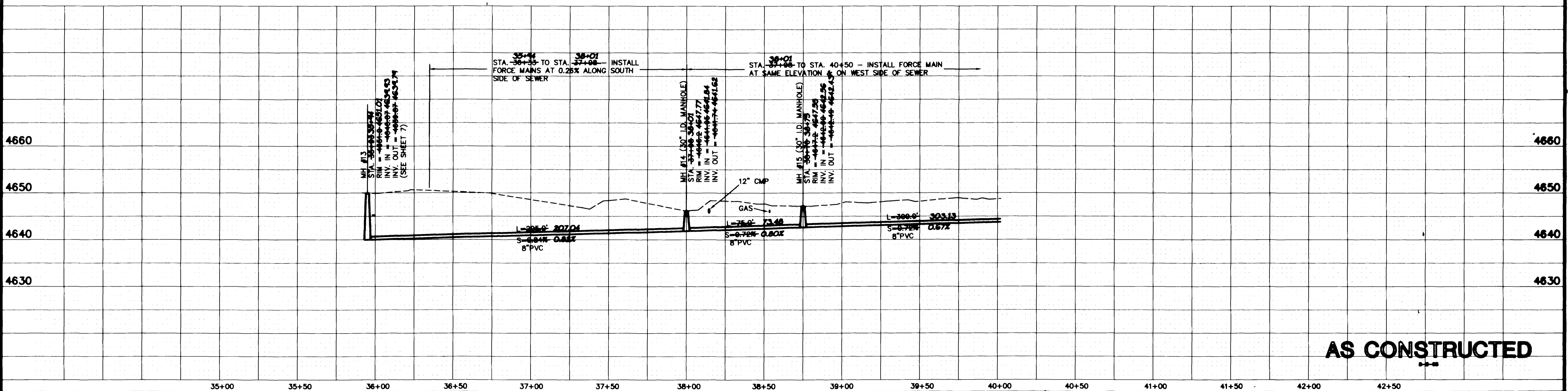
**SCENIC SCHOOL INTERCEPTOR  
STA. 31+00 TO STA. 38+00  
Plan & Profile**

SHEET NO.	7
OF	13
FILE NO.	SCENIC.DWG

MANHOLE	NORTHING	EASTING	N	E
13	-9603.06	-60302.03	4301.18	30389.41
14	-9446.68	-60608.78	4443.31	30688.77
15	-9379.60	-60809.03	4371.31	30989.67



- CONSTRUCTION NOTES**
- ① 4" WYE AND SERVICE TO PROPERTY LINE.
  - LIMITS OF PAVEMENT REMOVAL AND REPLACEMENT



**AS CONSTRUCTED**

REVISION	DESCRIPTION	DATE
△		
△		
△		
△		

DESIGNED BY	TKH	DATE	1-95
DRAWN BY	DPW	DATE	1-95
CHECKED BY		DATE	
APPROVED BY		DATE	
POINT FILE	SEMICCTL.ASC - SCENIC2.ASC		

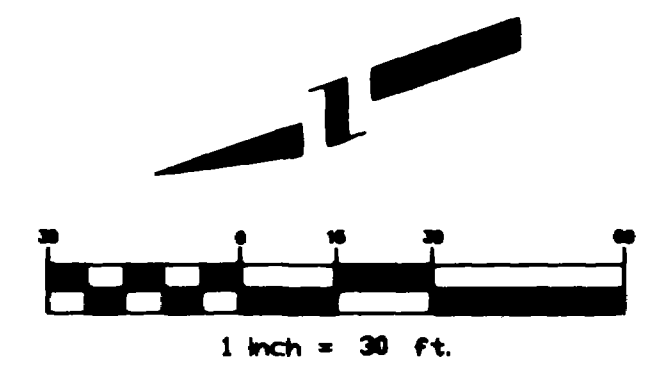
SCALE	
PLAN	PROFILE
HORIZ. 1"=30'	HORIZ. 1"=30'
	VERT. 1"=10'

DEPARTMENT OF PUBLIC WORKS AND UTILITIES  
ENGINEERING DIVISION  
CITY OF GRAND JUNCTION, COLORADO

SCENIC SCHOOL INTERSEPTOR  
STA. 35+00 TO STA. 40+00  
Plan & Profile

SHEET NO.	8A
OF	13
FILE NO.	992058.DWG

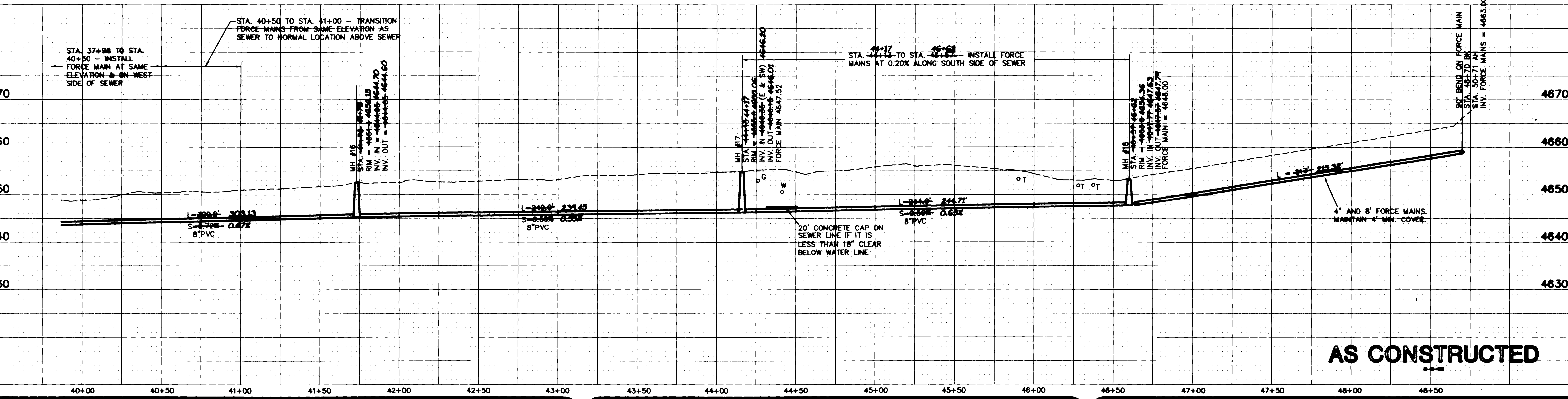
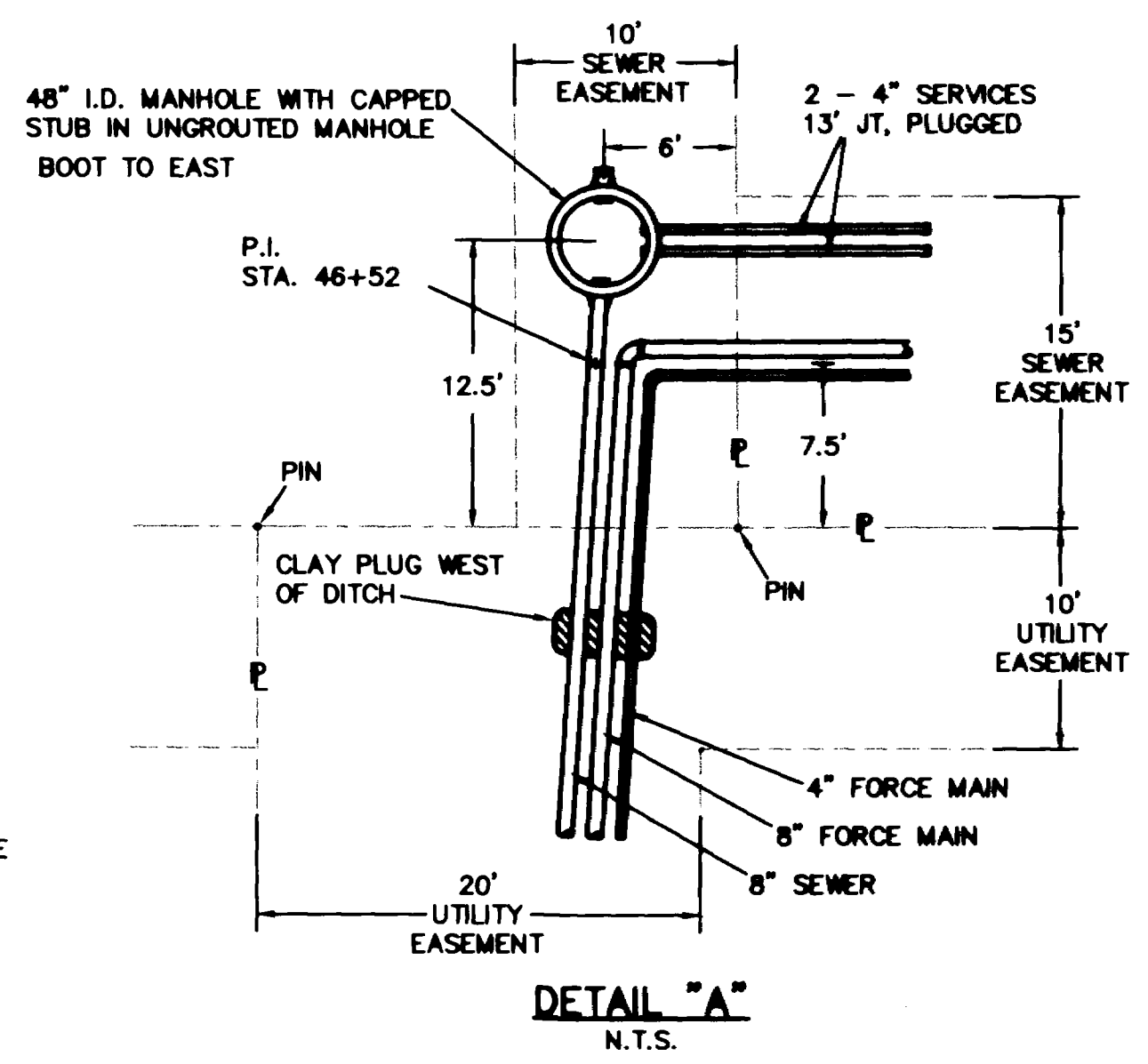
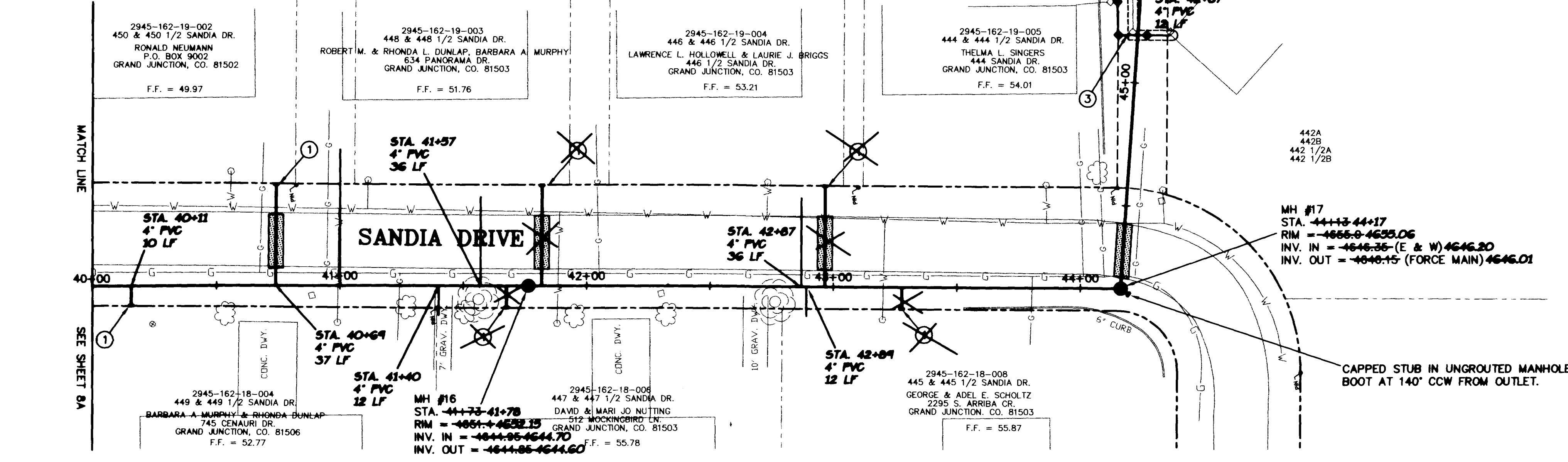
MANHOLE	NORTHING	EASTING
16	8084.07	60644.34
17	8040.87	60446.04
18	8760.05	60677.48
16	9078.98	50811.47
17	8848.11	50447.93
18	8766.48	50678.62



**CONSTRUCTION NOTES**

- 4" WYE AND SERVICE TO PROPERTY OR EASEMENT LINE. ACTUAL LOCATION TO BE ESTABLISHED AT TIME OF CONSTRUCTION.
- REMOVE AND SALVAGE EXISTING CHAIN LINK FENCE
- INSTALL CHAIN LINK FENCE, USING COMPONENTS FROM EXISTING FENCE WHERE POSSIBLE. UNUSED MATERIALS TO BE LEFT ON SITE AND STOCKPILED FOR PROPERTY OWNER

LIMITS OF PAVEMENT REMOVAL AND REPLACEMENT



**AS CONSTRUCTED**

REVISION	DESCRIPTION	DATE

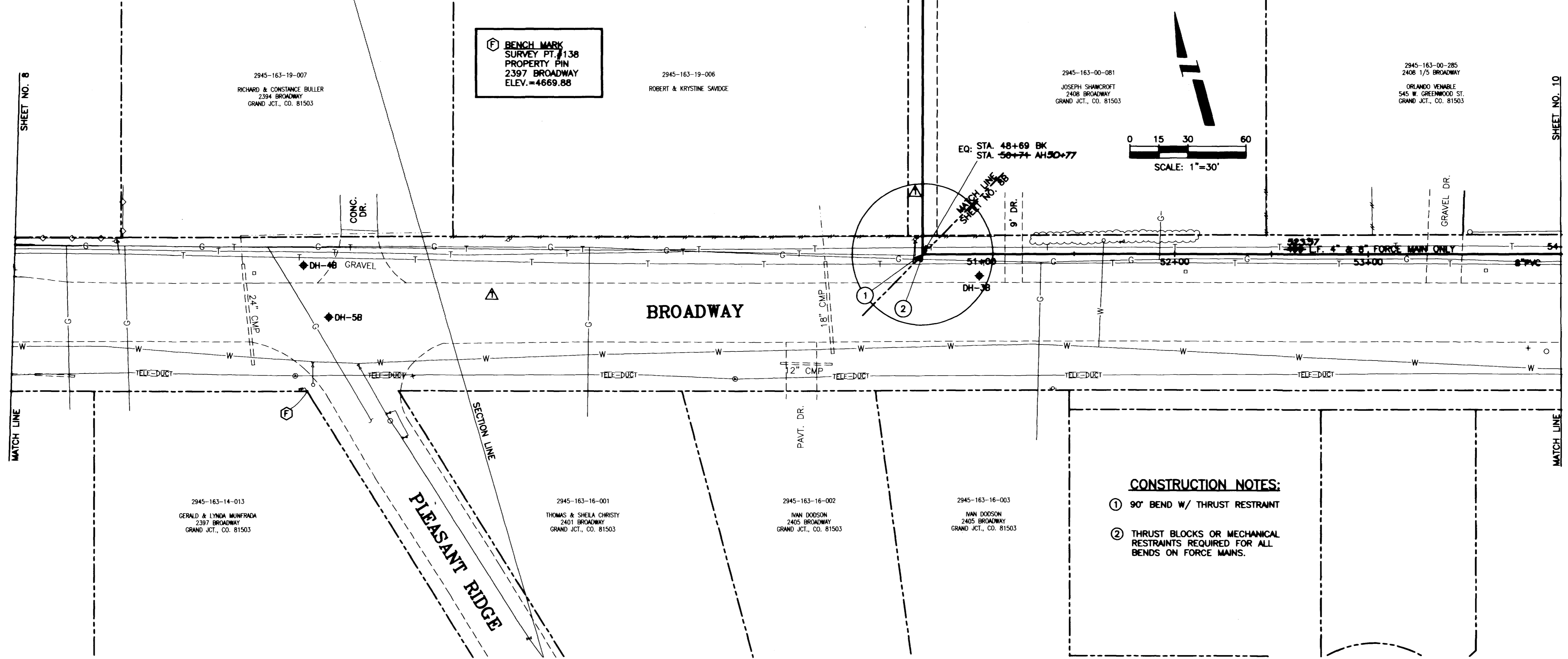
DESIGNED BY	TKH	DATE	1-95
DRAWN BY	DPW	DATE	1-95
CHECKED BY		DATE	
APPROVED BY		DATE	
POINT FILE	SENICCTL.ASC		SCENIC2.ASC

SCALE	
PLAN	PROFILE
HORIZ. 1"=30'	HORIZ. 1"=30'
	VERT. 1"=10'

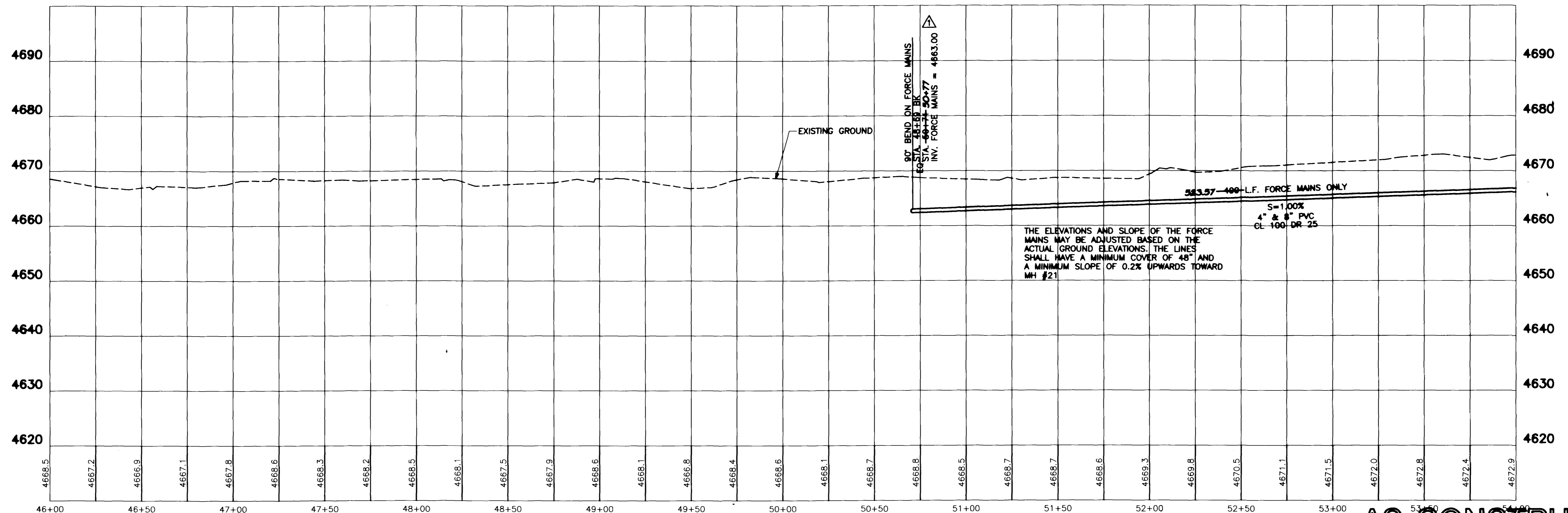
DEPARTMENT OF PUBLIC WORKS AND UTILITIES  
ENGINEERING DIVISION  
CITY OF GRAND JUNCTION, COLORADO

SCENIC SCHOOL INTERSEPTOR  
STA. 40+00 TO STA. 49+00  
Plan & Profile

SHEET NO.	13
OF	13
FILE NO.	99205L.DWG



- CONSTRUCTION NOTES:**
- ① 90° BEND W/ THRUST RESTRAINT
  - ② THRUST BLOCKS OR MECHANICAL RESTRAINTS REQUIRED FOR ALL BENDS ON FORCE MAINS.



**AS CONSTRUCTED**

REVISION	DESCRIPTION	DATE
1	DELETE SEWER ON BROADWAY, REROUTE FORCE MAIN	1/95

DESIGNED BY	TKH	DATE	1-95
DRAWN BY	C.A.K.	DATE	10/4/93
CHECKED BY		DATE	
APPROVED BY		DATE	
POINT FILE	SCENIC.ASC		

SCALE	
PLAN	PROFILE
HORIZ. 1"=30'	HORIZ. 1"=30'
	VERT. 1"=10'

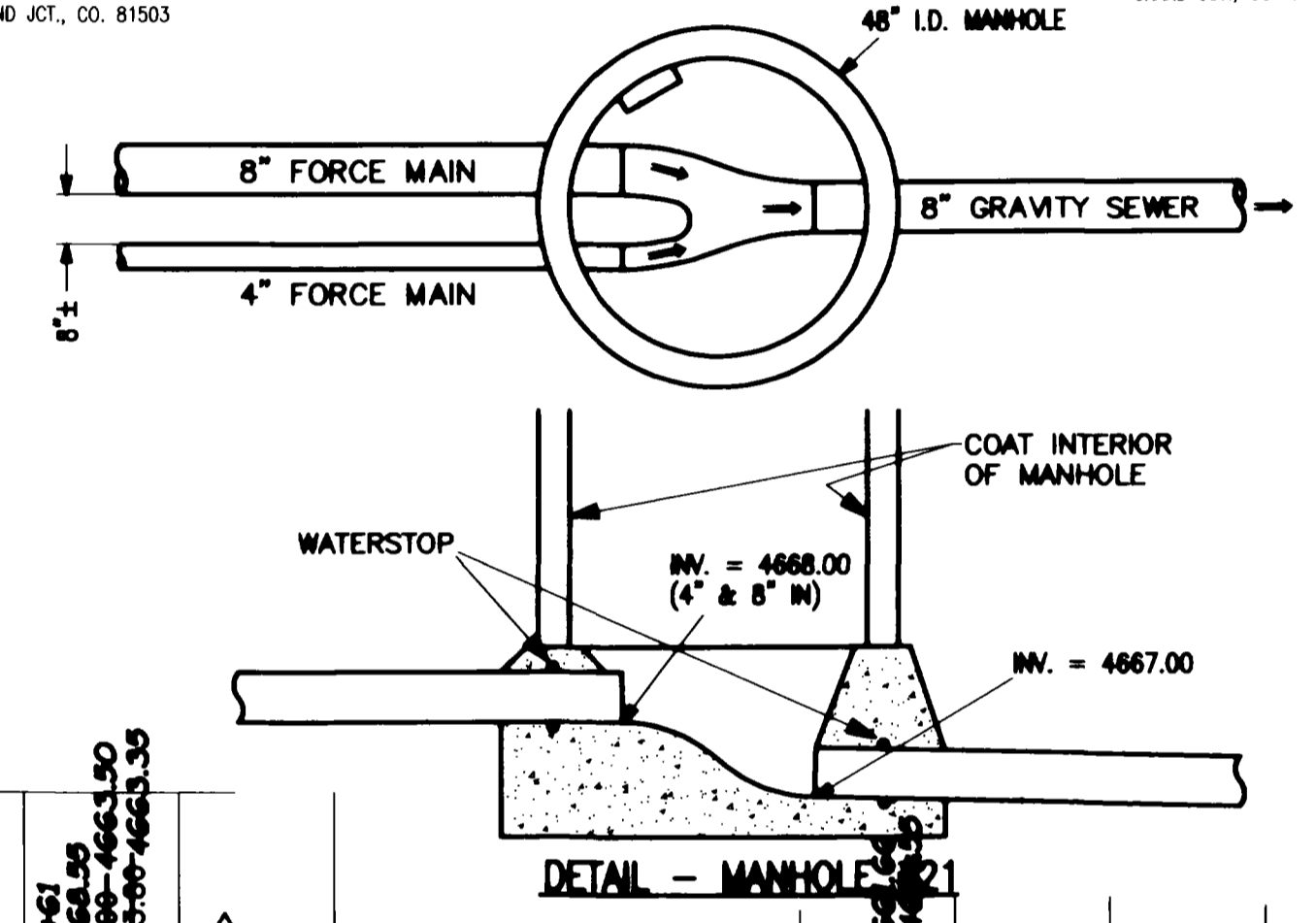
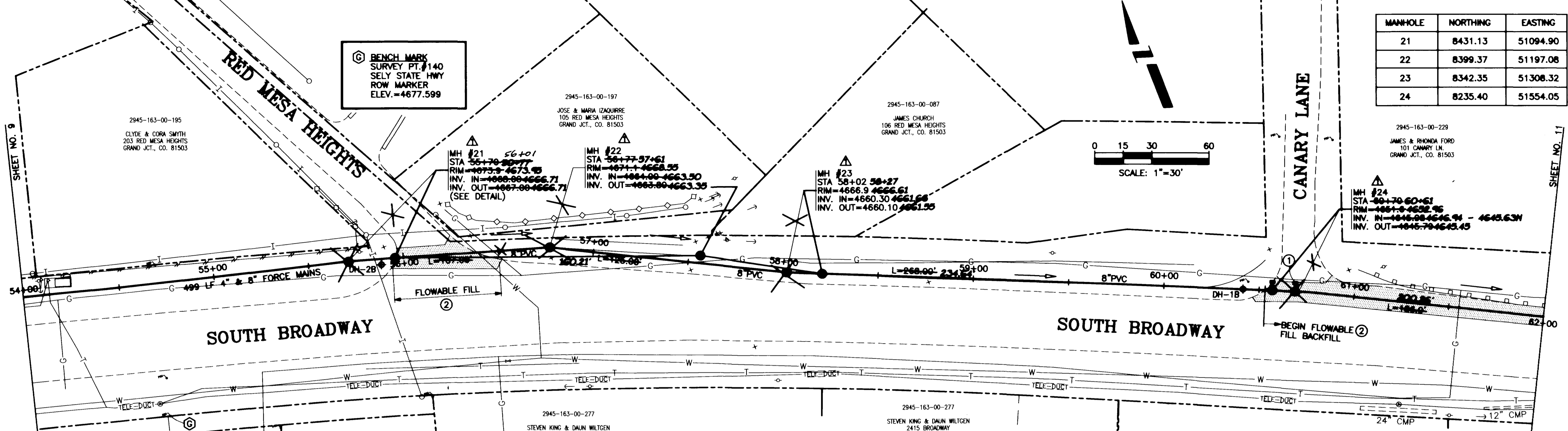
**DEPARTMENT OF PUBLIC WORKS AND UTILITIES  
ENGINEERING DIVISION  
CITY OF GRAND JUNCTION, COLORADO**

**SCENIC SCHOOL INTERCEPTOR  
STA. 46+00 TO STA. 54+00  
Plan & Profile**

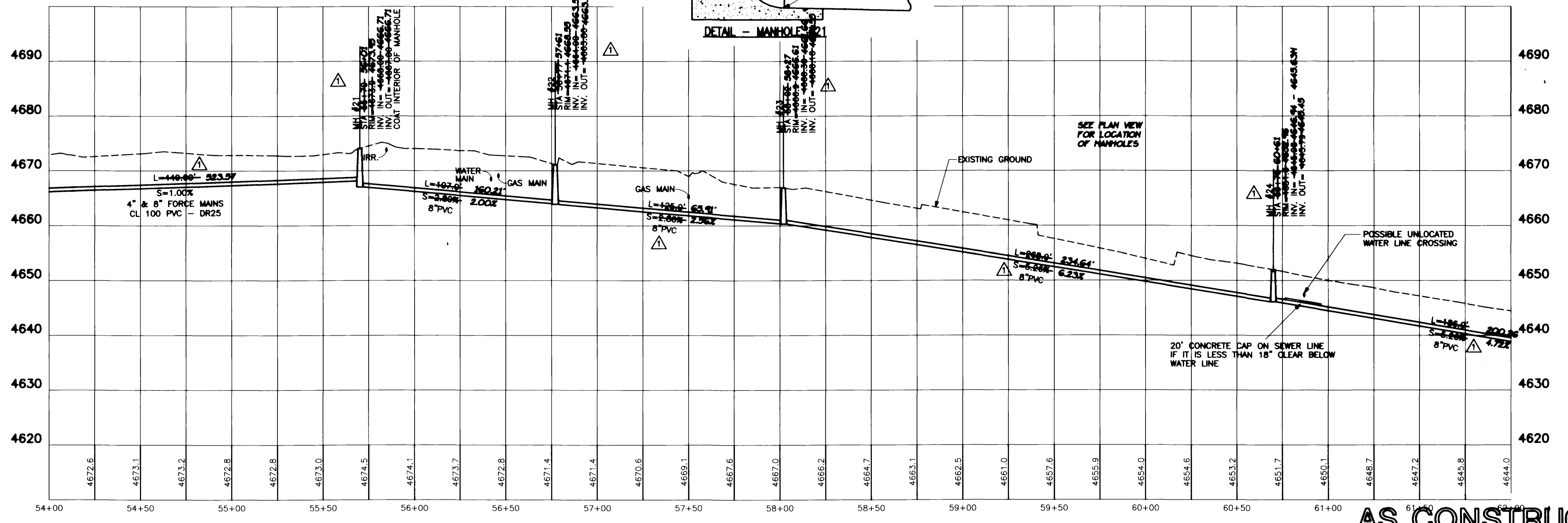
SHEET NO.	9
OF	13
FILE NO.	SCENIC.DWG



MANHOLE	NORTHING	EASTING
21	8431.13	51094.90
22	8399.37	51197.08
23	8342.35	51308.32
24	8235.40	51554.05



- CONSTRUCTION NOTES**
- ① 8" SDR 35 IN UNGRADED MANHOLE BOOT W/ PLUG.
  - ② TRENCH TO BE BACKFILLED WITH FLOWABLE FILL (100 psi) FROM TOP OF BEDDING MATERIAL TO ASPHALT SUBGRADE.
- ▨ LIMITS OF PAVEMENT REMOVAL & REPLACEMENT



**AS CONSTRUCTED**

REVISION	DESCRIPTION	DATE
△	SHALLOWER DEPTH, EXTEND FORCE MAIN	1/95
△		
△		
△		

DESIGNED BY	TKH	DATE	1-95
DRAWN BY	C.A.K.	DATE	10/4/93
CHECKED BY		DATE	
APPROVED BY		DATE	
POINT FILE	SCENIC.ASC		

SCALE	
PLAN	PROFILE
HORIZ. 1"=30'	HORIZ. 1"=30'
	VERT. 1"=10'

DEPARTMENT OF PUBLIC WORKS AND UTILITIES  
ENGINEERING DIVISION  
CITY OF GRAND JUNCTION, COLORADO

SCENIC SCHOOL INTERCEPTOR  
STA. 54+00 TO STA. 62+00  
Plan & Profile

SHEET NO.	10
OF	13
FILE NO.	SCENIC.DWG

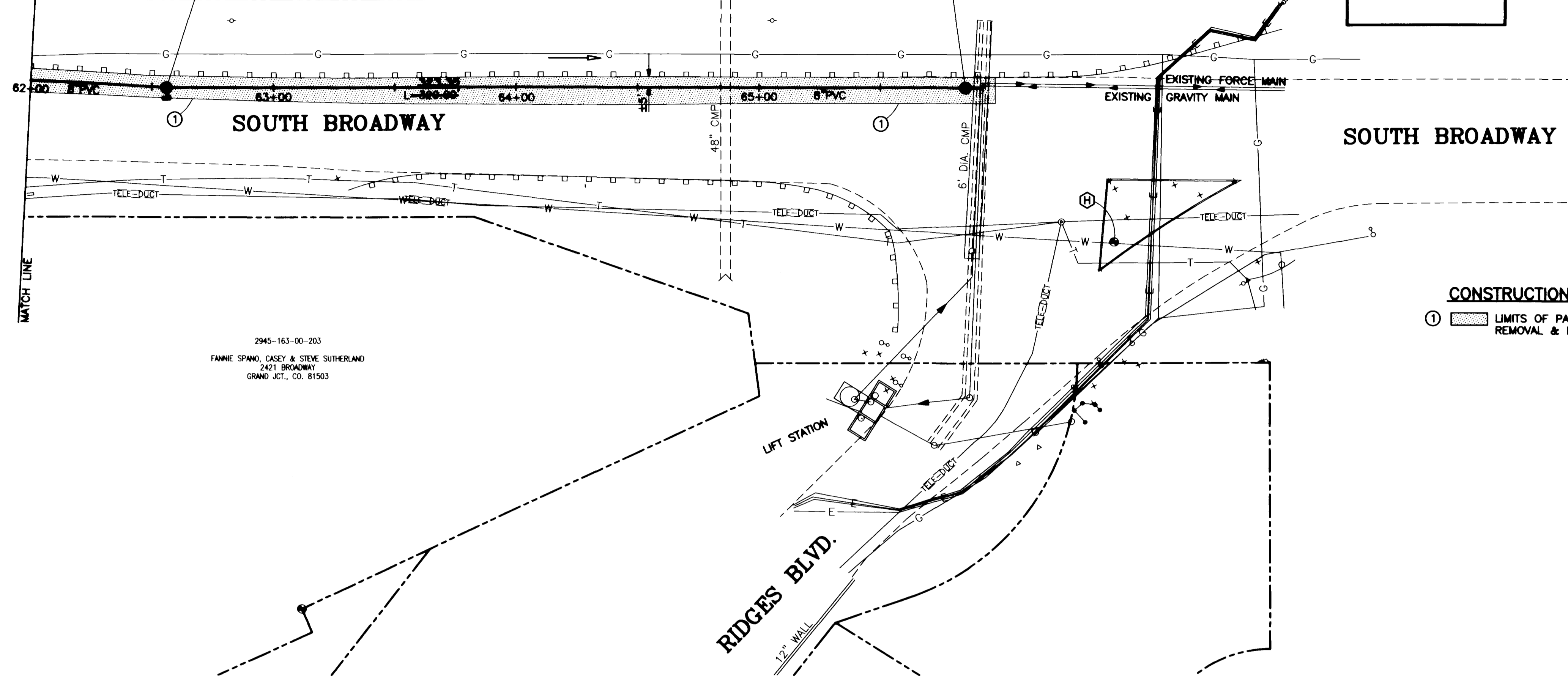
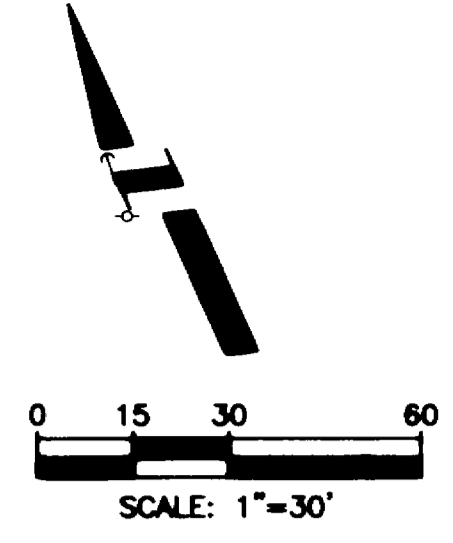
6  
46.94 - 4645.63N  
4643.45

2945-163-00-229  
JAMES & RHONDA FORD  
101 CANARY LN.  
GRAND JCT., CO. 81503

MH #25  
STA 62+46.62+62  
RIM=4641.86-4641.41  
INV. IN=4636.01-4635.91  
INV. OUT=4635.01-4635.01

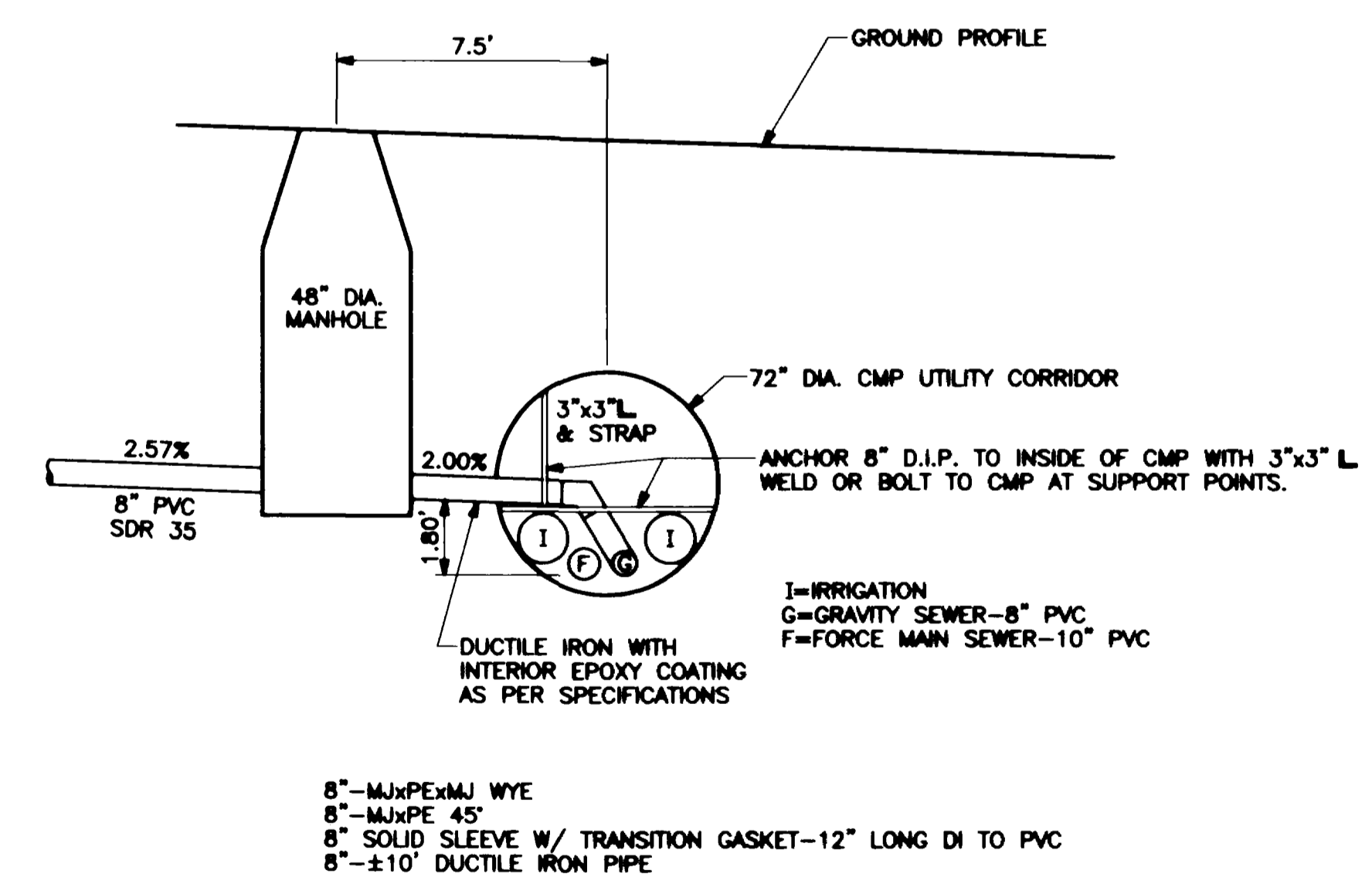
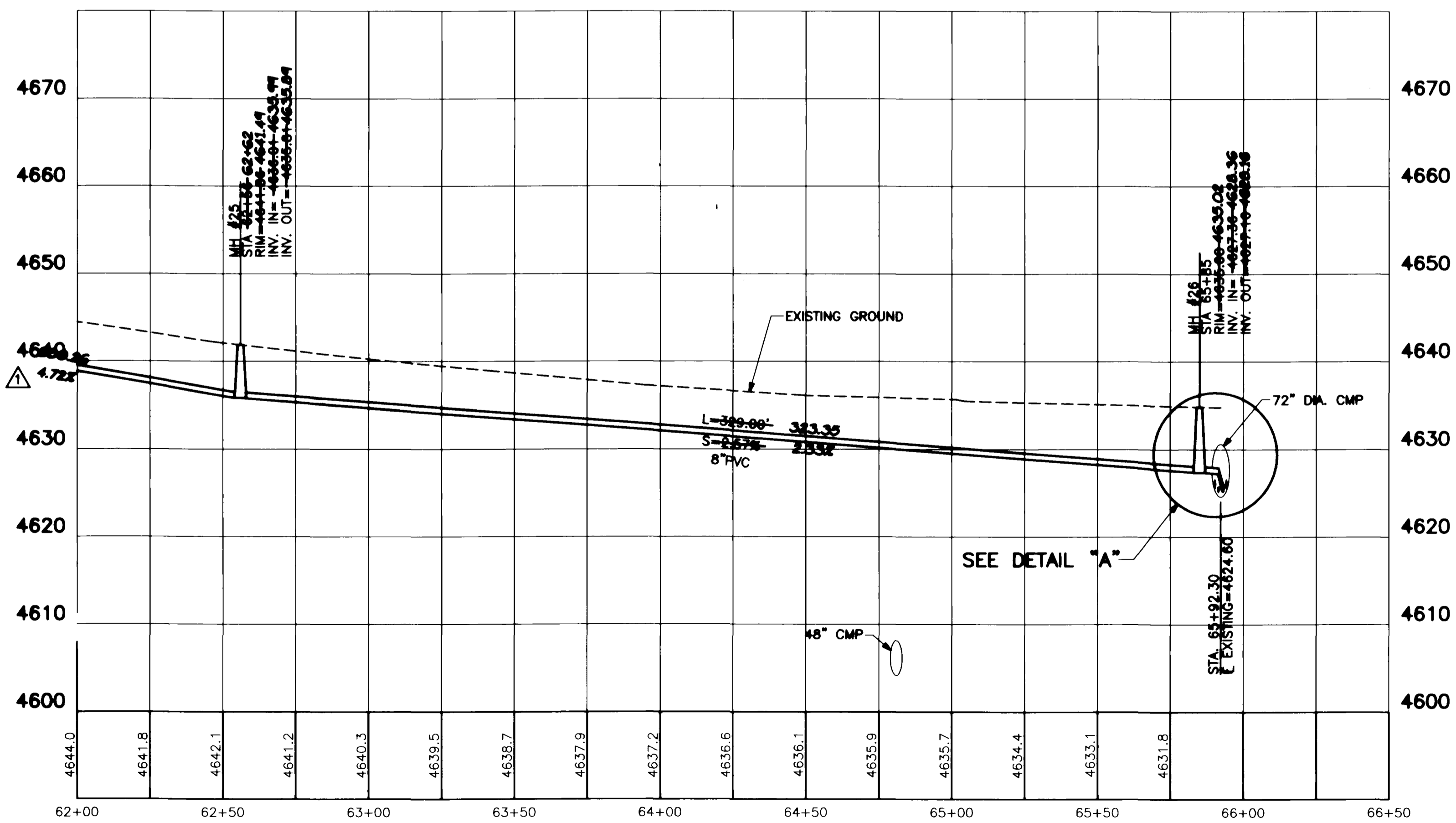
MH #26  
STA 65+85  
RIM=4635.00-4635.02  
INV. IN=4626.00-4626.36  
INV. OUT=4627.16-4628.16

BENCH MARK  
SURVEY PT. #146  
CP SET #5 REBAR  
ELEV.=4635.31



2945-163-00-203  
FANNIE SPANO, CASEY & STEVE SUTHERLAND  
2421 BROADWAY  
GRAND JCT., CO. 81503

CONSTRUCTION NOTES  
① LIMITS OF PAVEMENT  
REMOVAL & REPLACENT



DETAIL "A"  
SCALE: 1"=4'  
FIELD FABRICATE TO MATCH  
EXISTING CONDITIONS

AS CONSTRUCTED

REVISION	DESCRIPTION	DATE	DESIGNED BY	TKH	DATE	1-95	SCALE	
REVISION			DRAWN BY	C.A.K.	DATE	10/4/93	PLAN	1"=30'
REVISION			CHECKED BY		DATE		PROFILE	1"=30'
REVISION			APPROVED BY		DATE		HORIZ.	1"=30'
REVISION			POINT FILE	SCENIC.ASC			VERT.	1"=10'

DEPARTMENT OF PUBLIC WORKS AND UTILITIES  
ENGINEERING DIVISION  
CITY OF GRAND JUNCTION, COLORADO

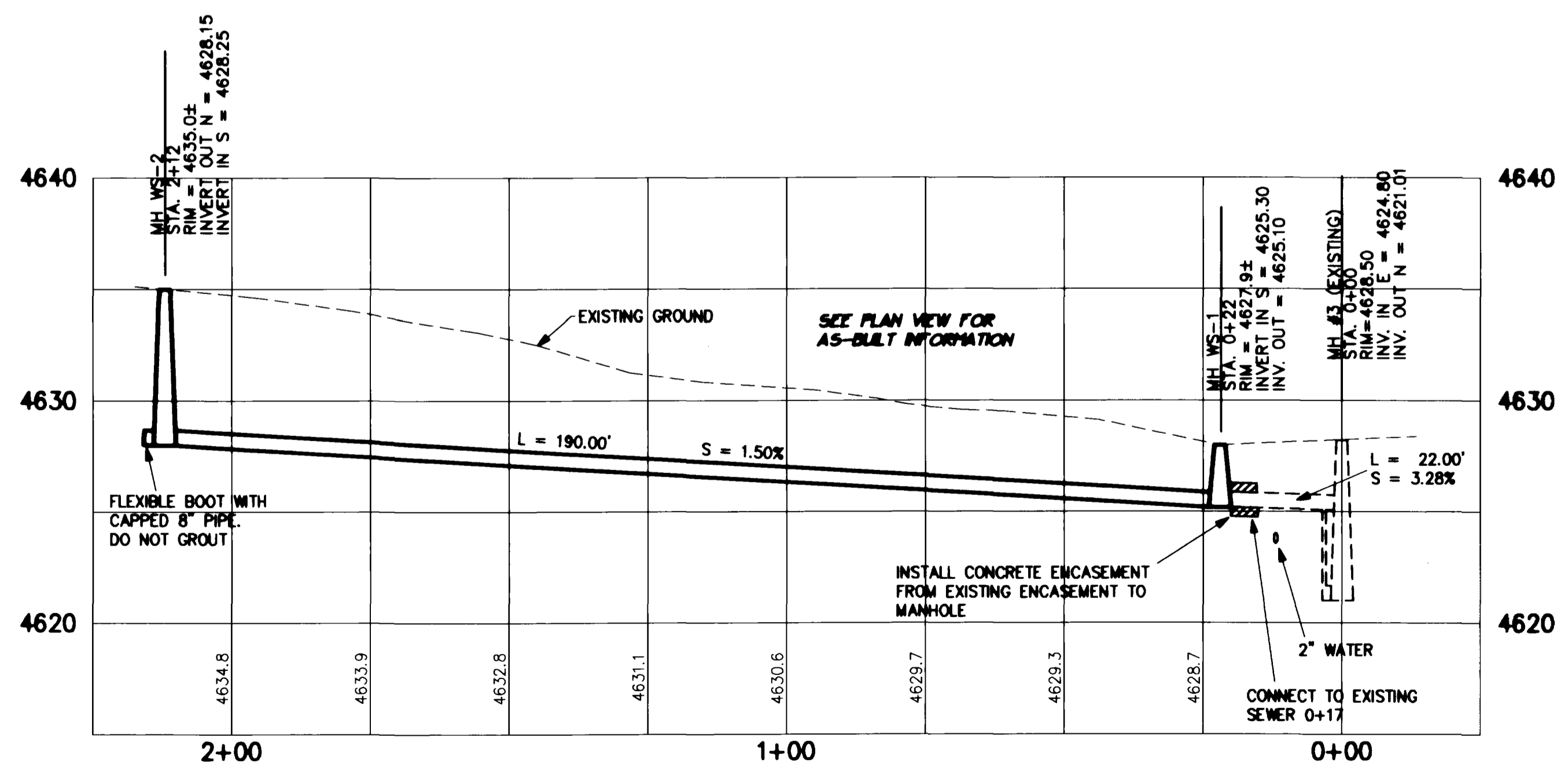
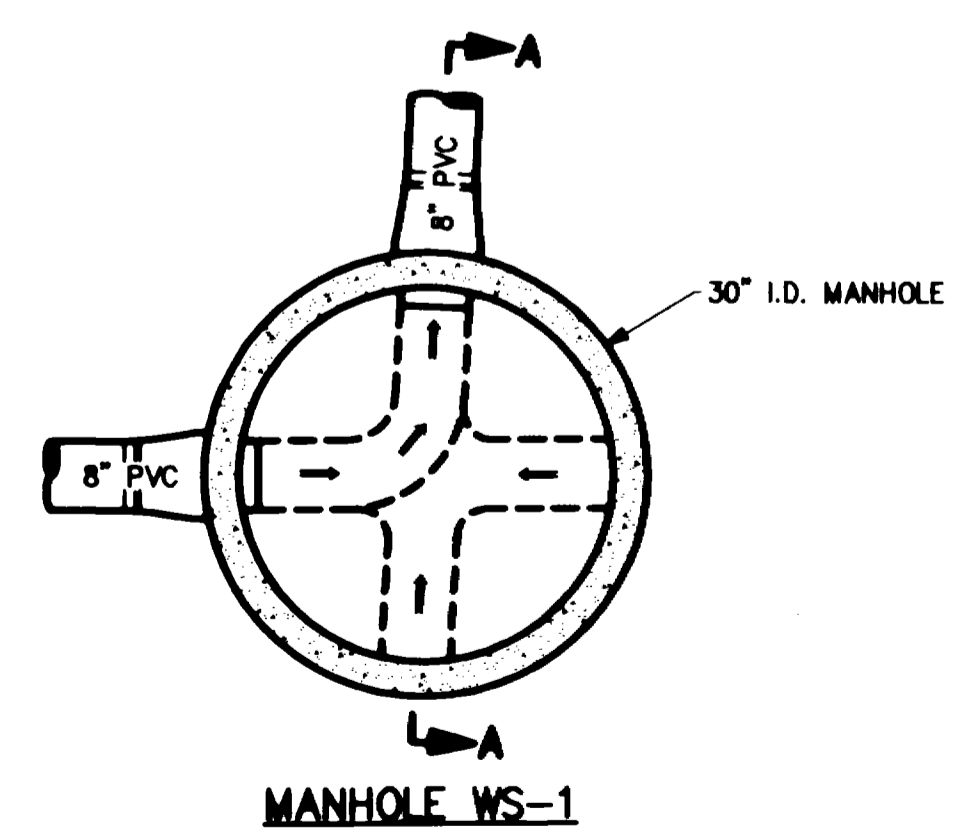
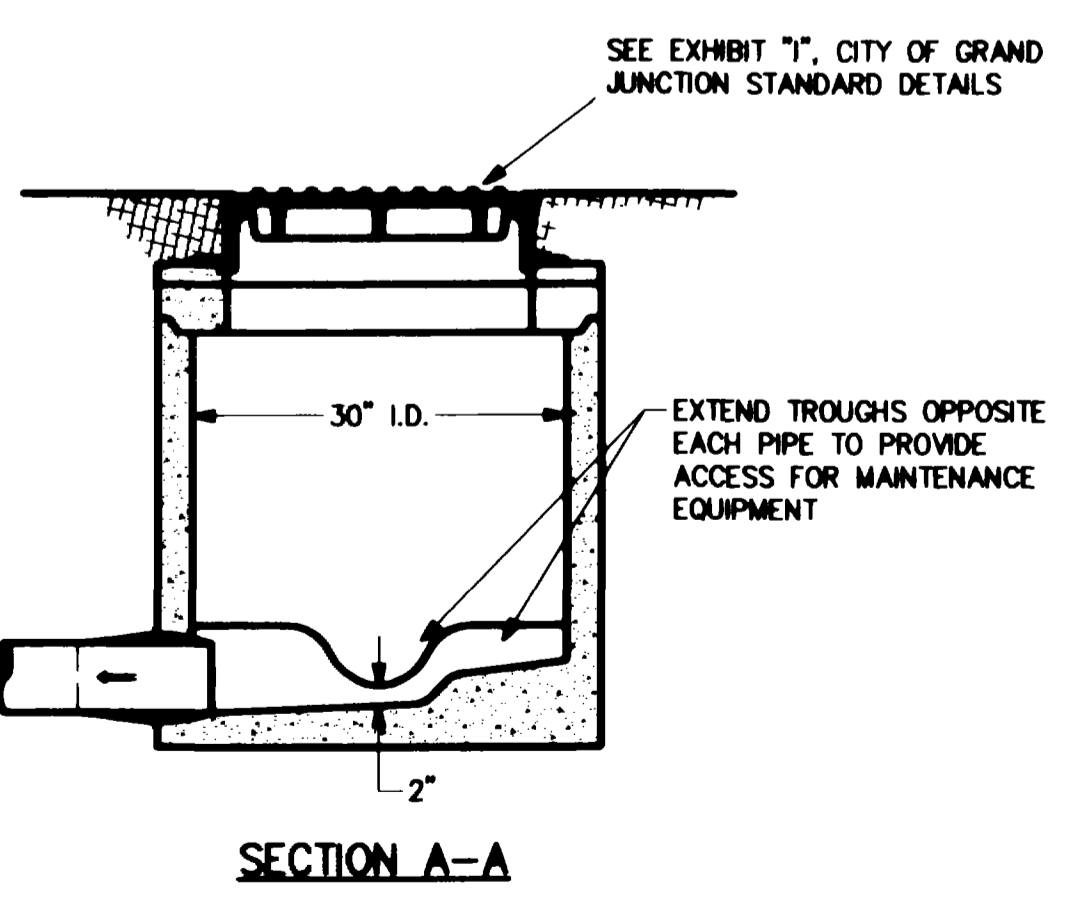
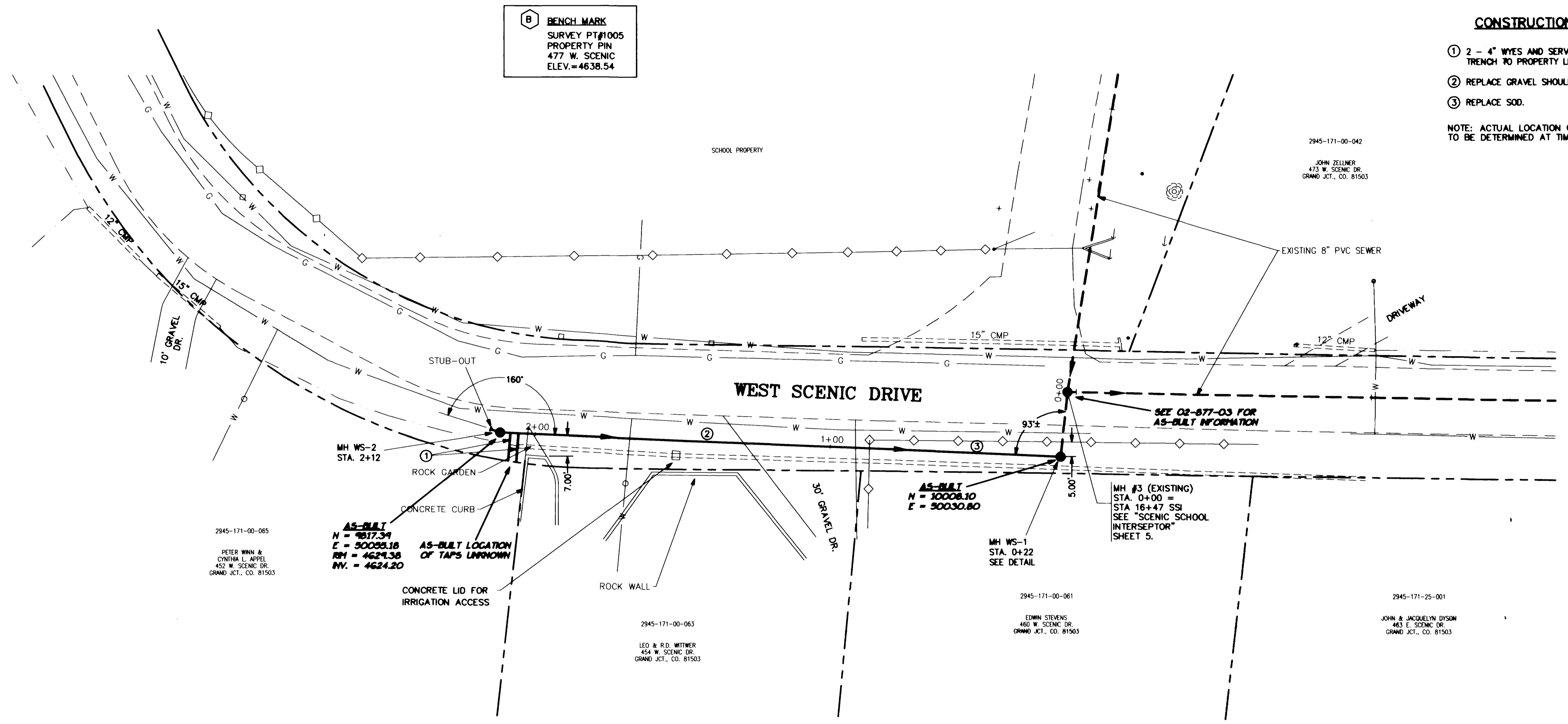
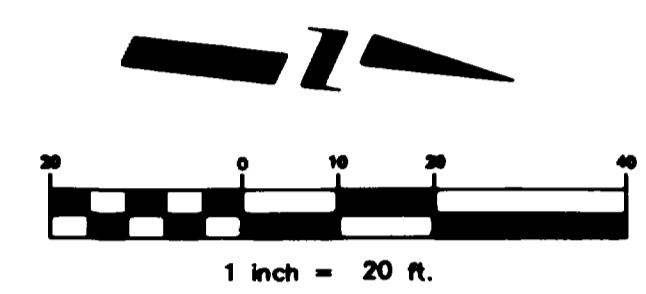
SCENIC SCHOOL INTERCEPTOR  
STA. 62+00 TO END OF PROJECT  
Plan & Profile

SHEET NO. 11  
OF 13  
FILE NO. SCENIC.DWG

**CONSTRUCTION NOTES:**

- ① 2 - 4" WYES AND SERVICE LINES IN COMMON TRENCH TO PROPERTY LINE.
  - ② REPLACE GRAVEL SHOULDER/DRIVEWAY.
  - ③ REPLACE SOD.
- NOTE: ACTUAL LOCATION OF SEWER SERVICES TO BE DETERMINED AT TIME OF CONSTRUCTION.

**B BENCH MARK**  
 SURVEY PT#1005  
 PROPERTY PIN  
 477 W. SCENIC  
 ELEV.=4638.54



REVISION	DESCRIPTION	DATE
REVISION		
REVISION		
REVISION		

DESIGNED BY	TKH	DATE	11-94
DRAWN BY	DPW	DATE	11-30-94
APPROVED BY	JWC	DATE	11-94
FIELD BOOK NO.		PAGE	

SCALE	
PLAN	PROFILE
HORIZ. 1"=20'	HORIZ. 1"=20'
	VERT. 1"=5'

**DEPARTMENT OF PUBLIC WORKS AND UTILITIES  
 ENGINEERING DIVISION  
 CITY OF GRAND JUNCTION, COLORADO**

<b>WEST SCENIC DRIVE SEWER LINE EXTENSION Plan &amp; Profile</b>		SHEET NO. 1 OF 1 FILE NO. SCENIC2.DWG
--	--	---