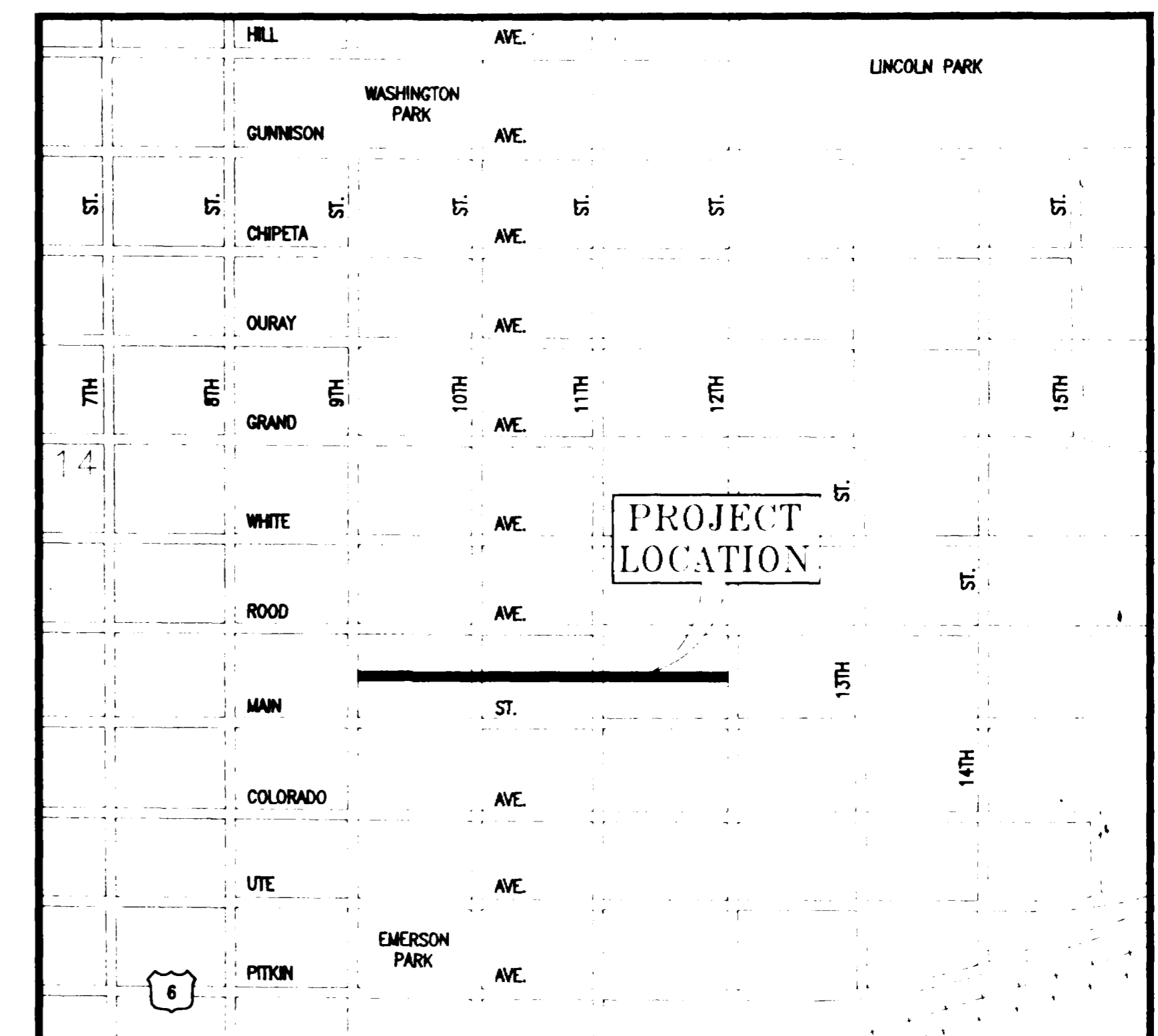


SANITARY SEWER RECONSTRUCTION 1991

ALLEY BETWEEN MAIN & ROOD - 9th. TO 12th.

1. Cover Sheet
2. Drafting Standards & Abbreviations
3. Summary of Approximate Quantities
- 4-6. Plan & Profile
7. Standard Sanitary Sewer Details (SS-1)
8. Standard Pavement Details (ST-1)



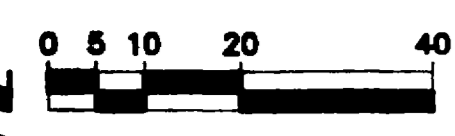
City of Grand Junction, Colorado

Department of Public Works & Utilities

Engineering Division

SUMMARY OF APPROXIMATE QUANTITIES

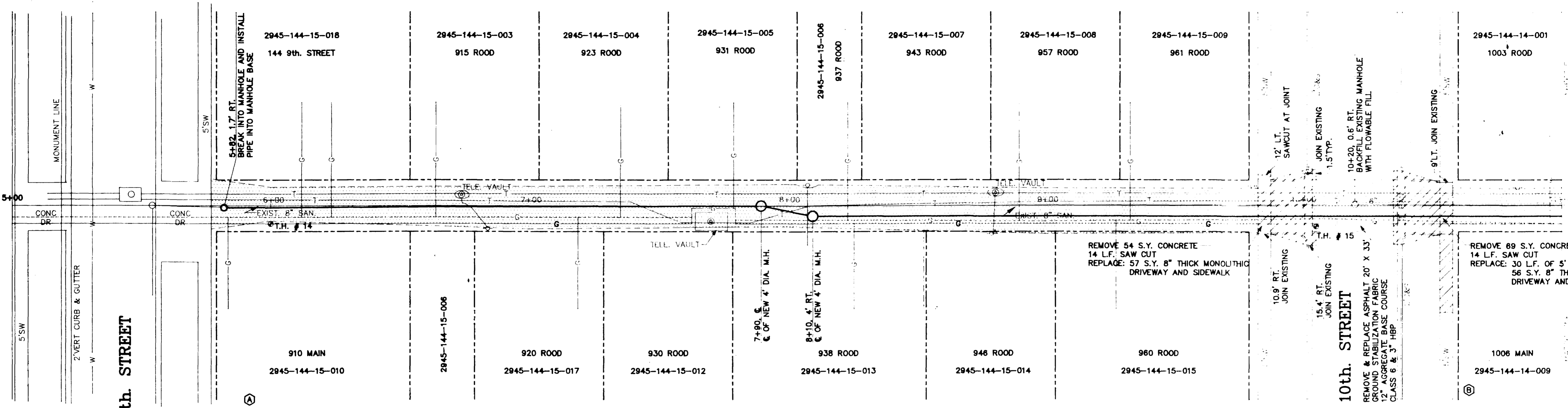
Item No.	Ref. No.	Contract Item	Unit	Quantity	Item No.	Ref. No.	Contract Item	Unit	Quantity
1.		Furnish & Install 8" Dia. PVC Sewer Pipe ASTM D-3034 SDR 35 (Including Excavation, Backfill & Backfill Material If Needed).	L.F.	1,220	28.		Mobilization	L.S.	L.S.
2.		Furnish & Install 8" Dia. PVC Sewer Pipe ASTM D-3034 SDR 35 (Including Excavation, Backfill & Pit Run Backfill Material)	L.F.	160	29.		Construction Staking	L.S.	L.S.
3.		4" Dia. Taps (Furnish & Install Saddle)	Each	46	30.		Informational Newsletter (50-75 Copies Per Week)	Weeks	7
4.		6" Dia. Taps (Furnish & Install Saddle)	Each	3	31.		Project Signs	Each	2
5.		Furnish & Install 4" Dia. PVC Sewer Pipe ASTM D-3034 SDR 35 (Including Excavation, Backfill & Backfill Material If Needed).	L.F.	400					
6.		Furnish & Install 6" Dia. PVC Sewer Pipe ASTM D-3034 SDR 35 (Including Excavation, Backfill & Backfill Material If Needed).	L.F.	45					
7.		Location of Taps	Each	50					
8.		Break Into Manhole Sta. 5+82 and Install New Pipe Into Manhole (Reuse Existing Ring and Cover).	L.S.	L.S.					
9.		Furnish & Install 4' Dia. Manhole (Greater Than 8' Deep). (Including New Ring and Cover.)	Each	2					
10.		Furnish & Install 4' Dia. Manhole (Less Than 8' Deep). (Reuse Existing Ring & Cover).	Each	2					
11.		Remove Existing Manhole Sta. 19+78	Each	1					
12.		Furnish & Install 4' Dia. Manhole (Less Than 8' Deep). (Reuse Existing Ring & Cover). Sta. 19+78	Each	1					
13.		Furnish New Manhole Ring and Cover (Where Authorized)	Each	2					
14.		Backfill Existing Manhole With Flowable Fill	Each	2					
15.		Granular Stabilization Material (Where Authorized)	Tons	1,000					
16.		Cut & Remove Asphalt	S.Y.	2,600					
17.		Aggregate Base Course Class 6 (Haul, Water and Compact).	S.Y.	3,200					
18.		Ground Stabilization Fabric (In Place)	S.Y.	200					
19.		Hot Bituminous Pavement (Grading E) (Haul, Asphalt & Compact) (2-1 1/2" Lifts)	S.Y.	160					
20.		Tack Coat CSS-1h	Gal.	20					
21.		Remove Concrete Curbs, Gutters, Sidewalks, Alley Aprons, etc.	S.Y.	250					
22.		Saw Cut Concrete Up to 8" Thick	L.F.	60					
23.		2' Wide Concrete Curb, Gutter (Including 4" Class 6 Aggregate Base Course).	L.F.	5					
24.		5' Wide Concrete Sidewalk 4" Thick (Including 4" Class 6 Aggregate Base Course).	L.F.	30					
25.		8" Thick Concrete Alley Approach Apron (Aggregate Base Course Not Included).	S.Y.	230					
26.		3' Wide Concrete Pan (6" Thick) (Including 6" Aggregate Base Course Class 6).	L.F.	7					
27.		Traffic Control	L.S.	L.S.					



A BENCH MARK:
CHIS TC/NCR NW COR 9TH ● COLO.
ELEV. 4584.85

B BENCH MARK:
S SIDE ALLEY #1006 MAIN
EAST SIDE 10TH ● ALLEY
ELEV 4589.19

ROOD AVENUE



NOTE: TAPS WILL HAVE TO BE LOCATED IN THE FIELD

REMOVE EXISTING ASPHALT BACKFILL - NATIVE MATERIAL PLACE 12" AGGREGATE BASE COURSE CLASS 6

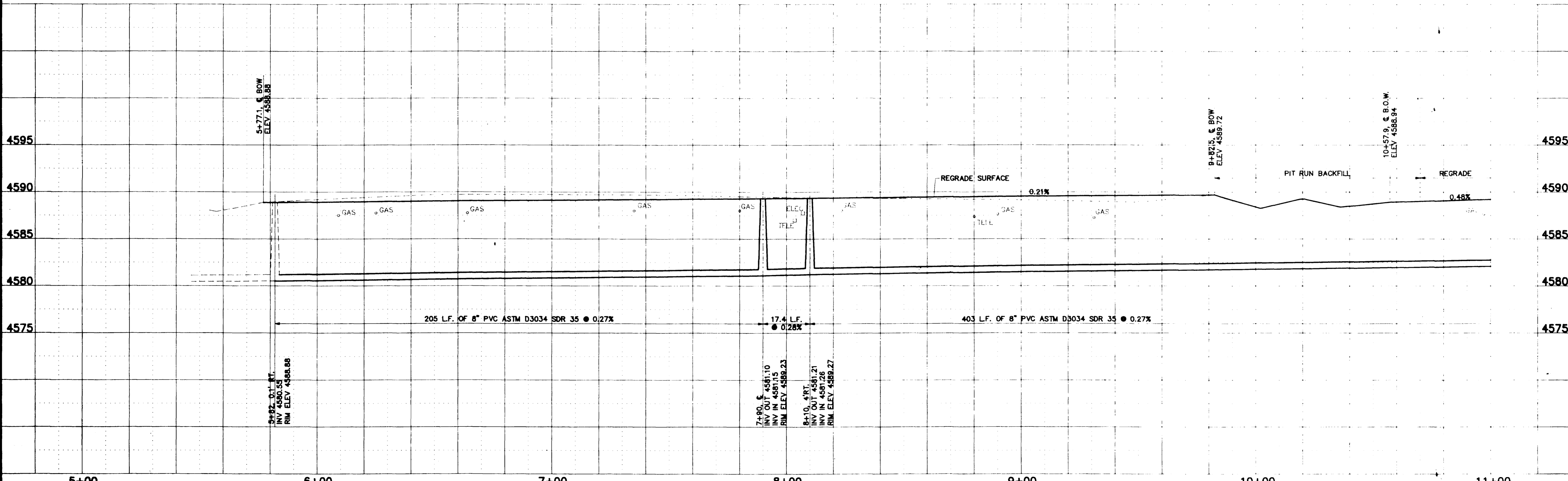
TESTHOLES: #14 @ 6+00, 7' RT.
#15 @ 10+05, 8' RT.

--- DENOTES OLD GAS LINE LEFT IN PLACE. GAS SERVICES REPLACED TO EDGE OF ROW.

--- CONCRETE REMOVAL AND REPLACEMENT.

--- OLD GAS LINE IS NO LONGER IN USE. CONTRACTOR MAY REMOVE THIS LINE AND OLD STEEL SERVICES. NO SEPARATE PAYMENT WILL BE MADE FOR THIS. THIS APPLIES TO ALL SHEETS.

MAIN STREET



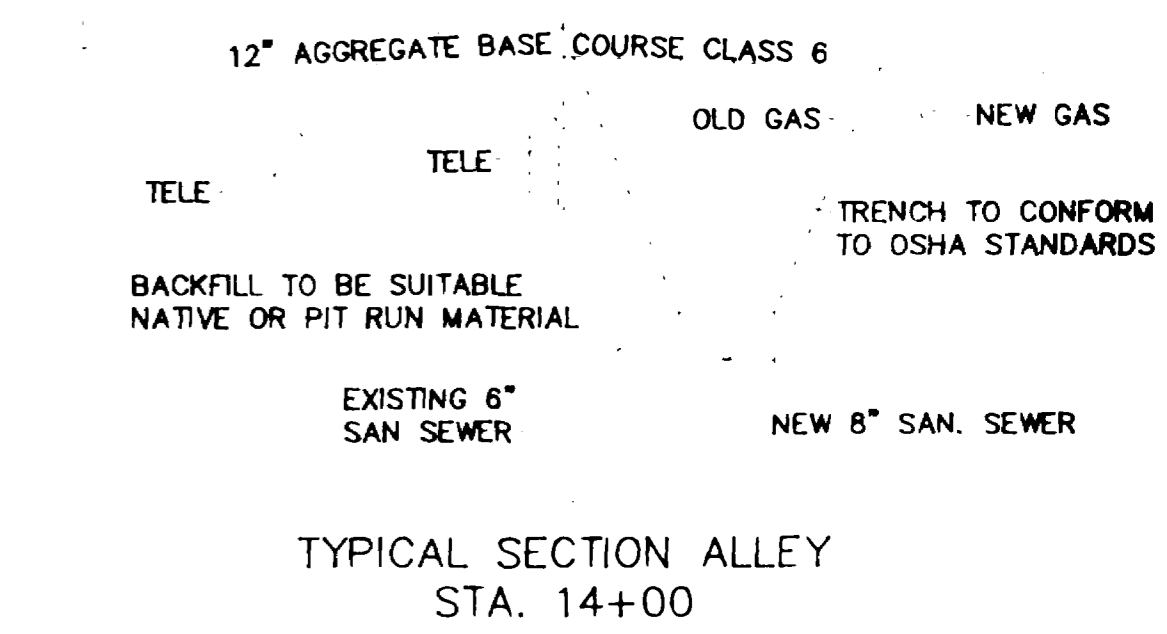
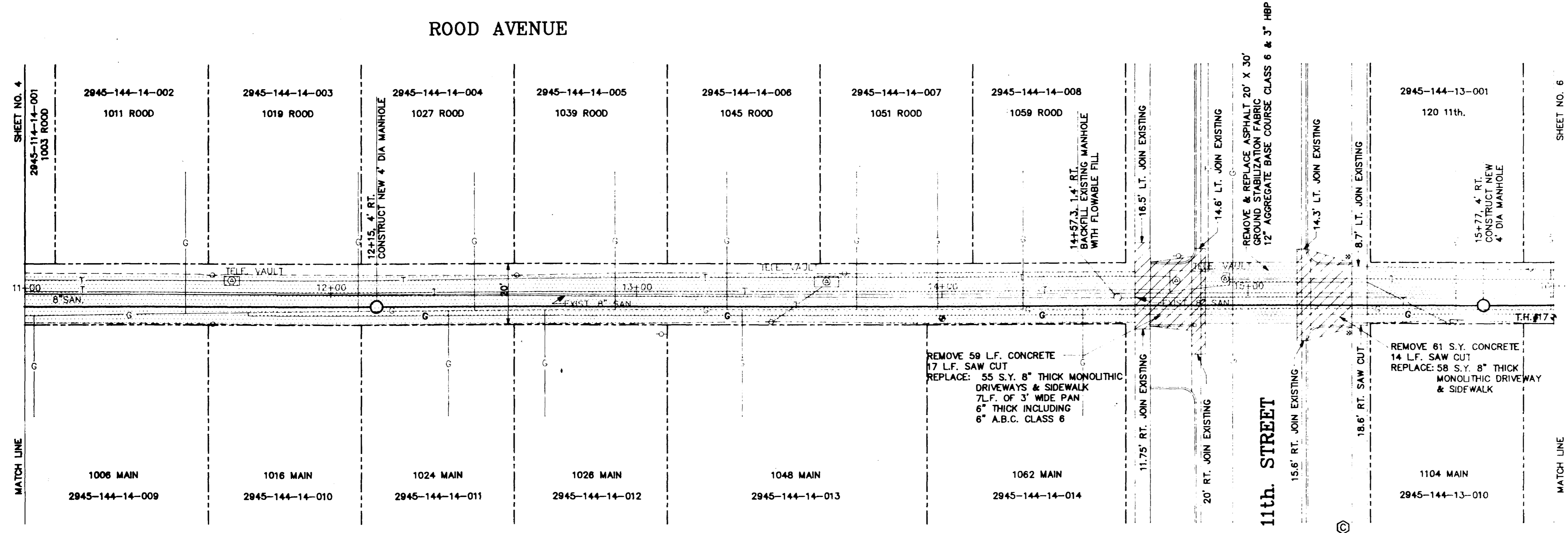
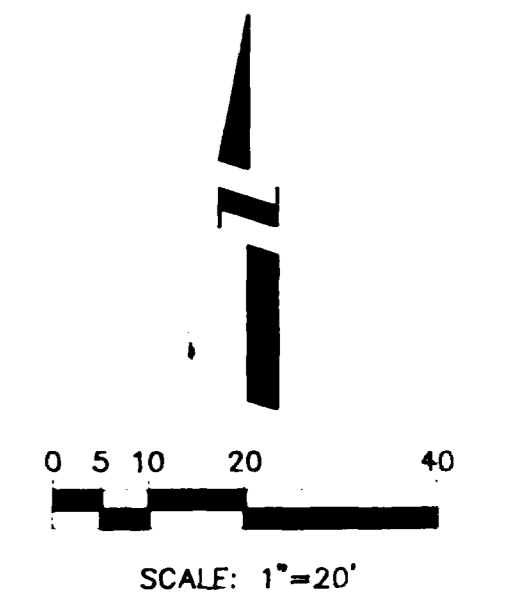
REVISION	DATE	DRAWN BY	DATE	SCALE
REVISION		CHECKED BY	DATE	PLAN
REVISION		APPROVED BY	DATE	PROFILE
REVISION		FIELD BOOK NO.	PAGE	HORIZ. 1"=20'
				HORIZ. 1"=20'
				VERT. 1"=5'

DEPARTMENT OF PUBLIC WORKS AND UTILITIES
ENGINEERING DIVISION
CITY OF GRAND JUNCTION, COLORADO

SANITARY SEWER RECONSTRUCTION 1991
ALLEY BETWEEN MAIN & ROOD-9th. TO 12th.
Plan & Profile

SHEET NO. 4
OF 8
FILE NO. 99102-01

BENCH MARK:
TC ● N. CR ALLEY DR
EAST SIDE 11TH.
ELEV. 4590.68



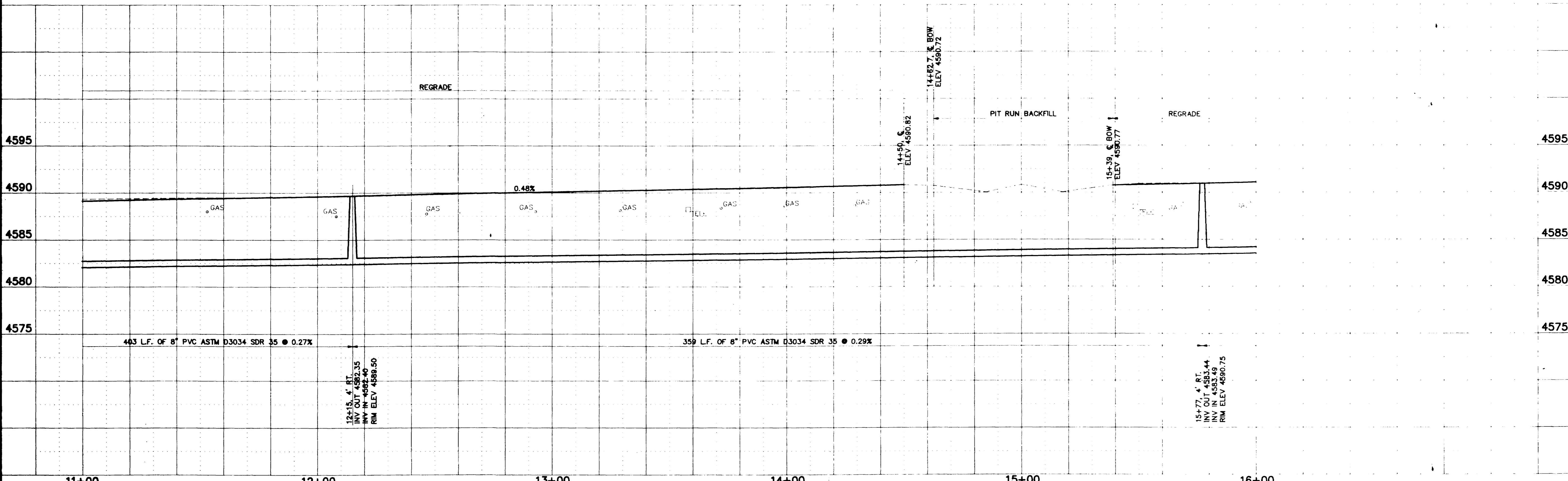
NOTE: TAPS WILL HAVE TO BE LOCATED IN THE FIELD.

REMOVE EXISTING ASPHALT, BACKFILL NATIVE MATERIAL PLACE 12\"/>

TEST HOLES: #16 ● 14+00, 8' RT.
#17 ● 16+00, 8' RT.

--- DENOTES OLD GAS LINE LEFT IN PLACE.
GAS SERVICES TO BE REPLACED TO EDGE OF ROW.

--- CONCRETE REMOVAL AND REPLACEMENT



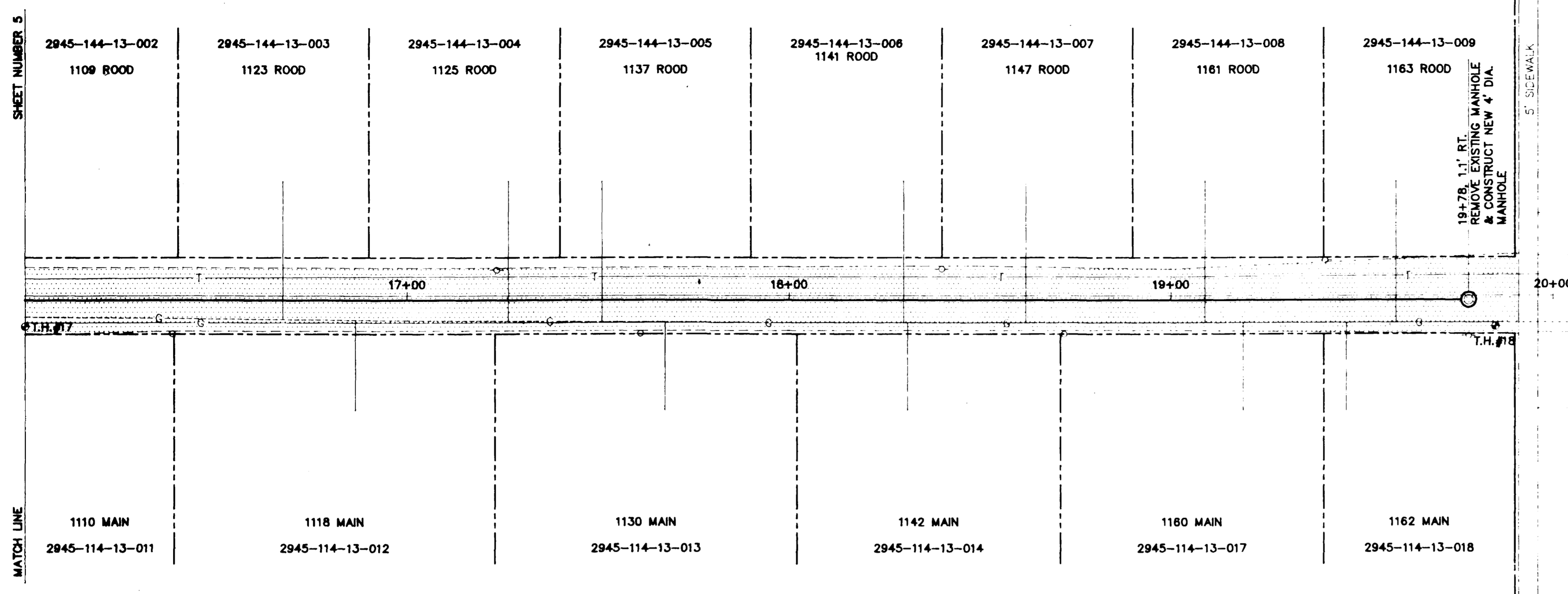
REVISION	DESCRIPTION	DATE	DRAWN BY	NOP	DATE	6/90
REVISION			CHECKED BY	NOP	DATE	6/90
REVISION			APPROVED BY	NOP	DATE	6/90
REVISION			FIELD BOOK NO.		PAGE	

DEPARTMENT OF PUBLIC WORKS AND UTILITIES
ENGINEERING DIVISION
CITY OF GRAND JUNCTION, COLORADO

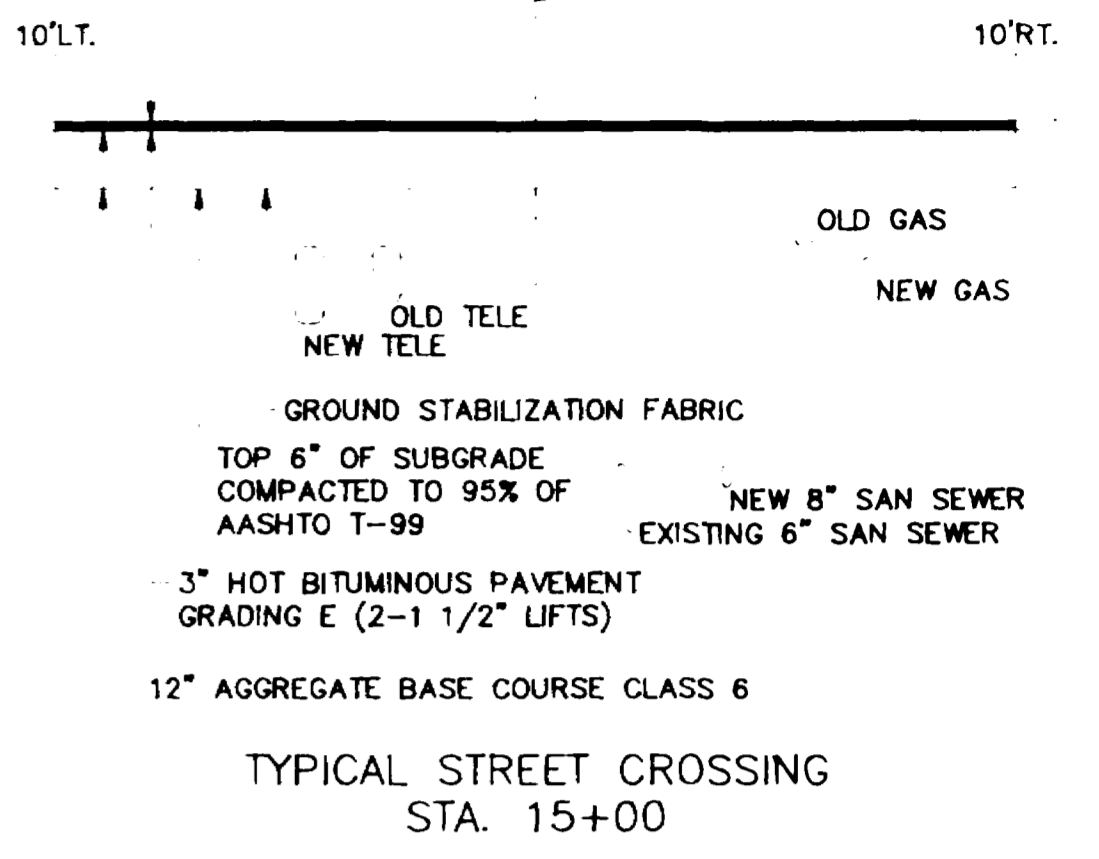
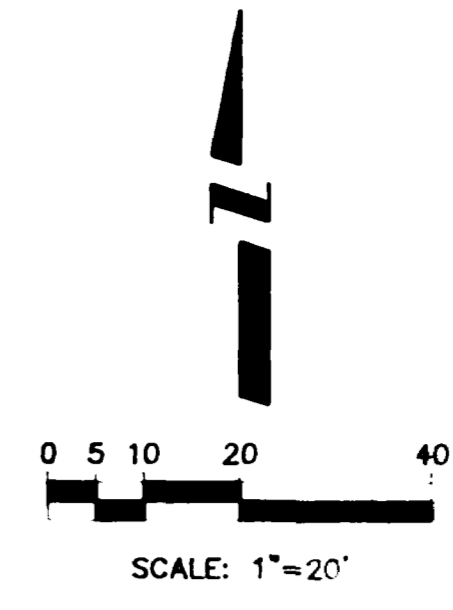
SANITARY SEWER RECONSTRUCTION 1991
ALLEY BETWEEN MAIN & ROOD-9th. TO 12th.
Plan & Profile

SHEET NO. 5
OF 8
FILE NO. 99102-02

ROOD AVENUE



12th. STREET

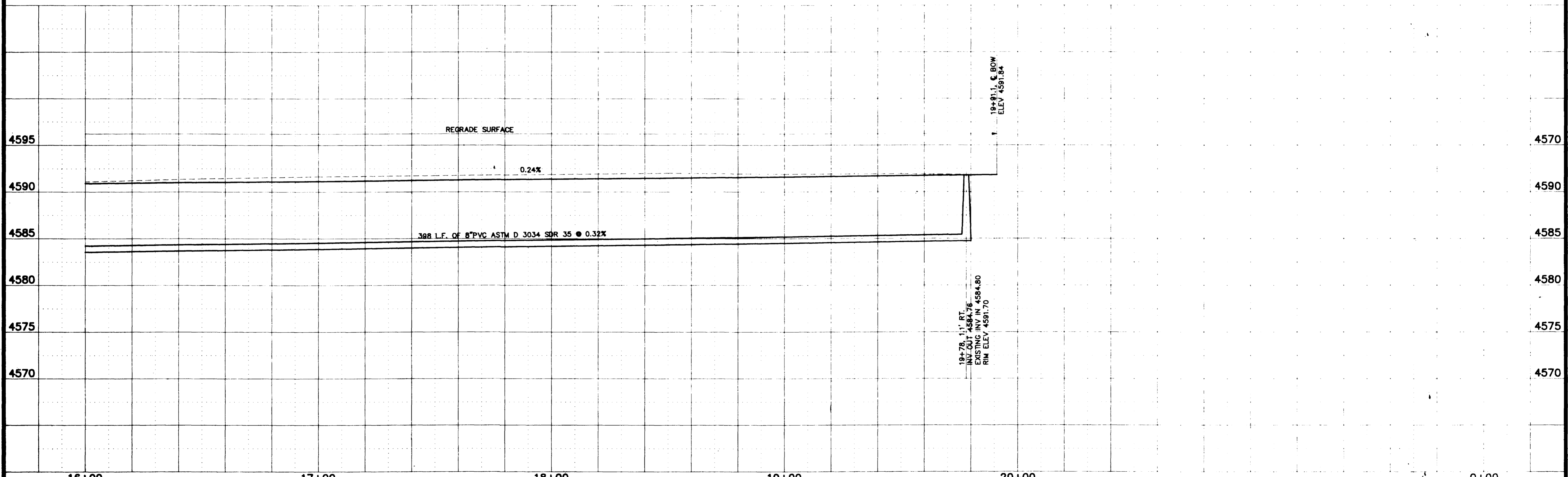


NOTES: TAP LOCATIONS UNKNOWN

TEST HOLES: #17 @ 16+00, 8' RT.
#18 @ 19+85, 8' RT.

- DENOTES OLD GAS LINE LEFT IN PLACE. GAS SERVICES TO BE REPLACED TO EDGE OF ROW
- REMOVE ASPHALT, BACKFILL NATIVE MATERIAL PLACE 12" AGGREGATE BASE COURSE CLASS 6

MAIN STREET



REVISION _____ REVISION _____ REVISION _____	DATE _____ DATE _____ DATE _____	DRAWN BY: NOP DATE: 6/90 CHECKED BY: NOP DATE: 6/90 APPROVED BY: NOP DATE: 6/90 FIELD BOOK NO. _____ PAGE _____	SCALE: PLAN: 1"=20' PROFILE: 1"=5'	DEPARTMENT OF PUBLIC WORKS AND UTILITIES ENGINEERING DIVISION CITY OF GRAND JUNCTION, COLORADO	SANITARY SEWER RECONSTRUCTION 1991 ALLEY BETWEEN MAIN & ROOD-9th. TO 12th. Plan & Profile	SHEET NO. 6 OF 8 FILE NO.
--	--	--	--	--	---	---------------------------------

SUMMARY OF APPROXIMATE QUANTITIES

Item No.	Ref. No.	Contract Item	Unit	Quantity															
		INTERSECTION APPROACH RECONSTRUCTION 1988																	
1.	202	Cut & Remove Pavement	S.Y.	1800															
2.	203	Unclassified Excavation	C.Y.	300															
3.	210	Adjust Valve Box to Grade	Ea.	6															
4.	--	Ground Stabilization Fabric (Where Authorized)	S.Y.	200															
5.	304	Granular Stabilization Material Including Over Excavation	Tons	150															
6.	304	Aggregate Base Course (Class 6) (Haul, Water, & Compact)	Tons	400															
7.	403	Hot Bituminous Pavement Grading E (4" Thick) (Haul, Asphalt & Compact) (2 Lifts)	S.Y.	1800															
8.	626	Mobilization	L.S.	L.S.															
9.	--	Traffic Control	L.S.	L.S.															
10.	--	Flaggers	Ea/Day	50															
11.	--	Informational Newsletter (100 Copies Per Week)	Weeks	5															
12.	--	Project Signs	Each	2															
13.	--	2" Conduit P.V.C. Schedule 40 (Furnish, Excavate, Install Backfill & Compact)	L.F.	180															