

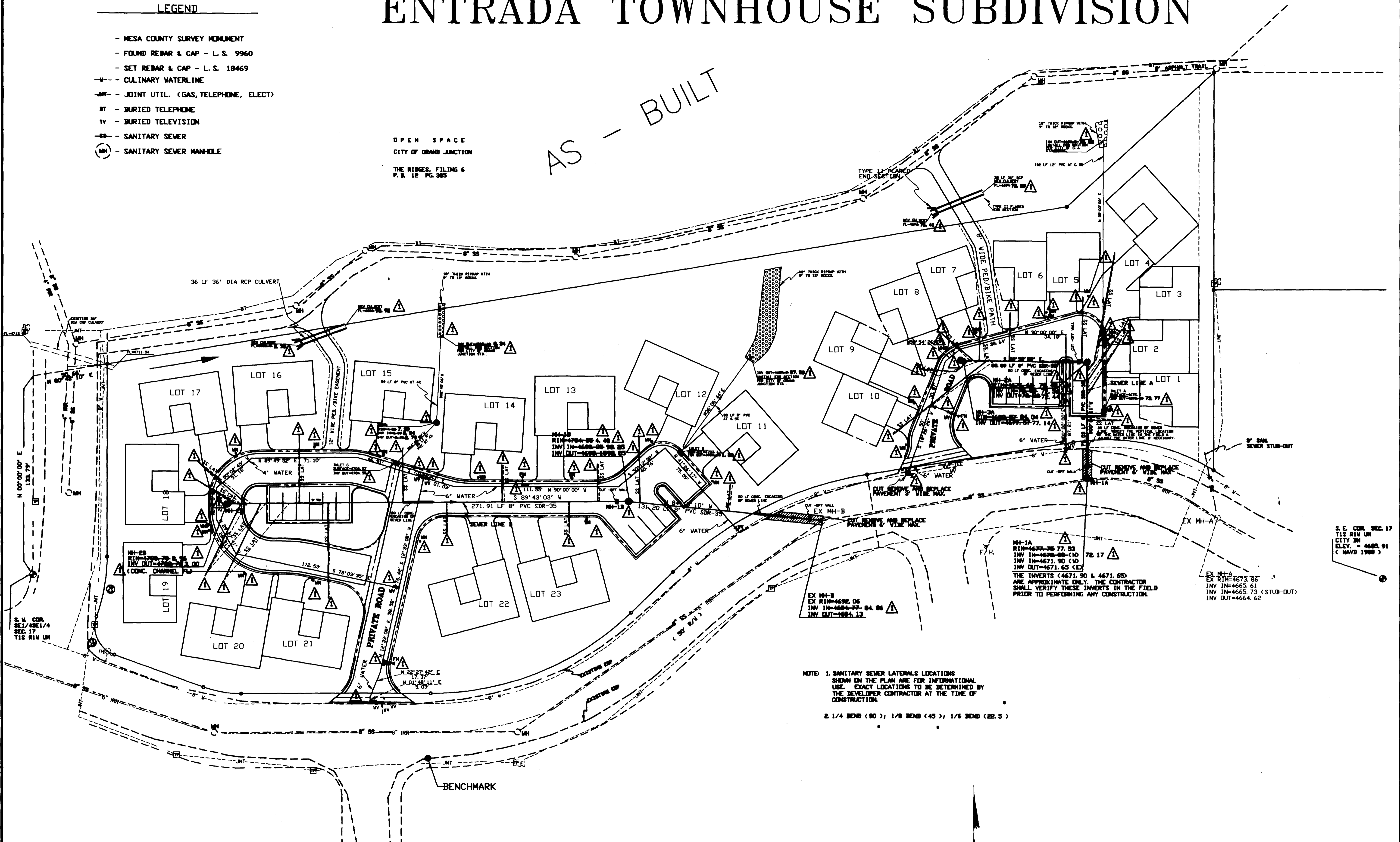
ENTRADA TOWNHOUSE SUBDIVISION

LEGEND

- MESA COUNTY SURVEY MONUMENT
- FOUND REBAR & CAP - L. S. 9960
- SET REBAR & CAP - L. S. 18469
- V - CULINARY WATERLINE
- JW - JOINT UTIL. (GAS, TELEPHONE, ELECT)
- BT - BURIED TELEPHONE
- TV - BURIED TELEVISION
- SS - SANITARY SEWER
- (MH) - SANITARY SEWER MANHOLE

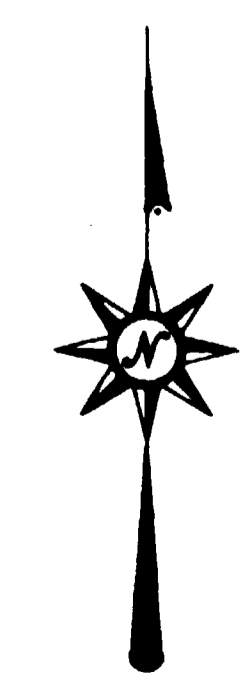
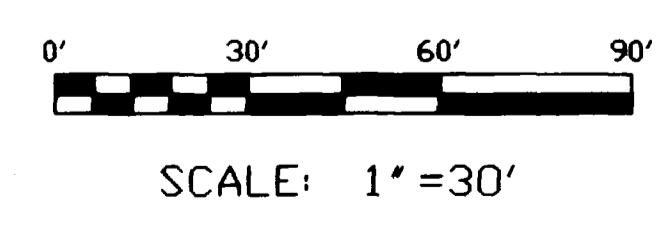
OPEN SPACE
CITY OF GRAND JUNCTION
THE RIDGES, FILING 6
P. 3, 12 PG. 385

AS - BUILT



NOTE: 1. SANITARY SEWER LATERALS LOCATIONS SHOWN ON THE PLAN ARE FOR INFORMATIONAL USE. EXACT LOCATIONS TO BE DETERMINED BY THE DEVELOPER CONTRACTOR AT THE TIME OF CONSTRUCTION.

2. 1/4 BEND (90°); 1/8 BEND (45°); 1/6 BEND (22.5°)



	9/24/97 AS-BUILT SANITARY SEWER, WATER & STORM SEWER FILE # ENTRADAASBUILT.DWG		
	ENTRADA TOWNHOUSE SUBDIVISION ASBUILT PLAN SEWER, WATER AND STORM SEWER GRAND JUNCTION, COLORADO		
ROLLAND ENGINEERING 405 Ridges Blvd Grand Jct, CO 81503 (970) 243-8300	Designed ML Checked ML Date 9/25/97	Sheet 1 Of 2	

