

SANITARY SEWER PLANS
HACIENDA

Located in Southeast quarter of Sec 4, T1S, R1W, Ute M
Grand Junction, Mesa County, Colorado

APPROVED FOR CONSTRUCTION:

CITY OF GRAND JUNCTION

DATE

INITIAL ACCEPTANCE:

CITY OF GRAND JUNCTION

DESIGNED BY

DRAWN BY

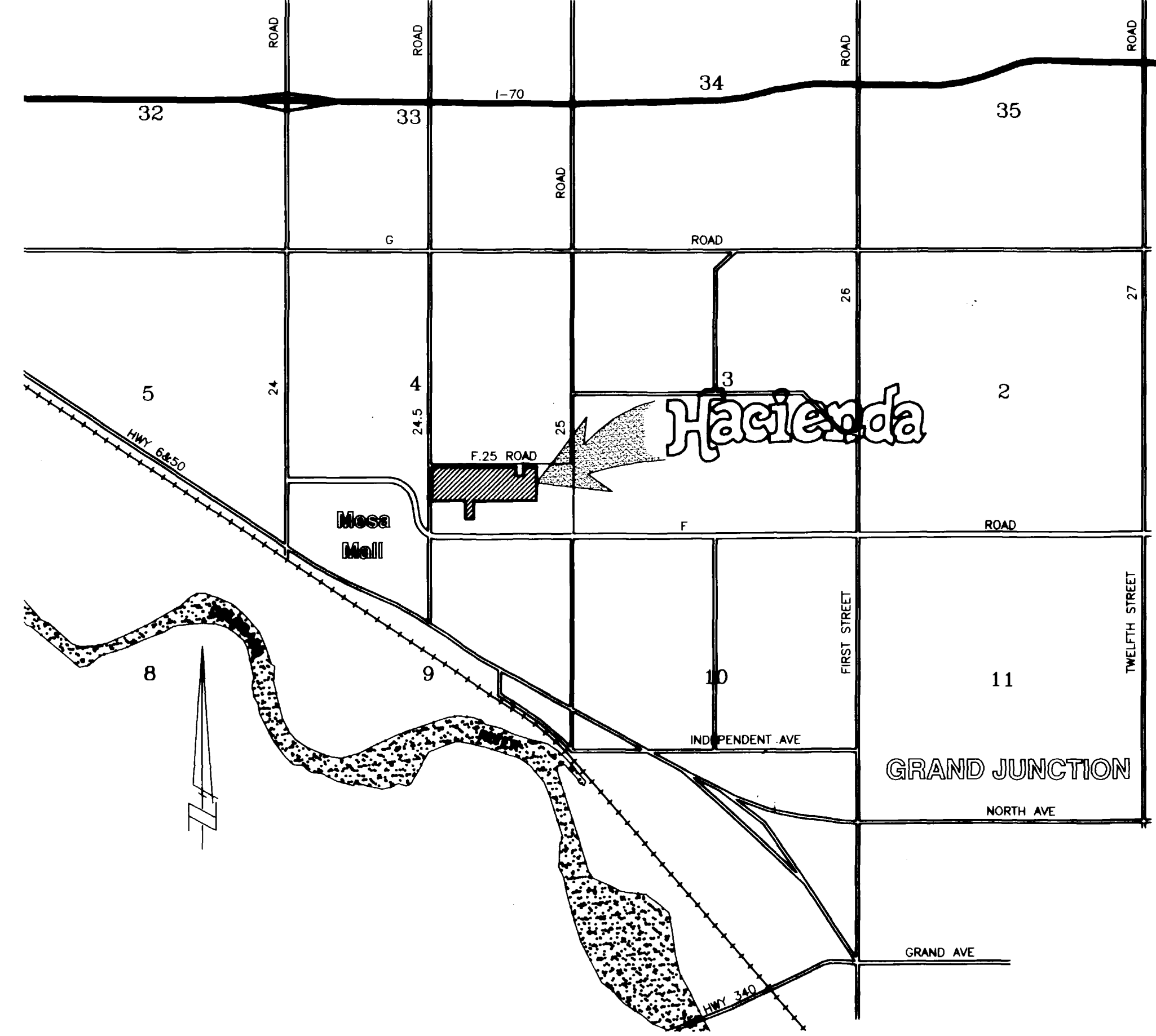
SURVEY DATE

REVISIONS

NO.	DATE	REMARKS	BY

SANITARY SEWER PLANS
HACIENDA

CIVIL ENGINEERING • PHOTOGRAMMETRY • SURVEYING
751 Horizon Court • Grand Junction, Colorado 81506 • Phone: 970-245-7101



VICINITY MAP:
1 inch = 2000 feet (1:24000)

SHEET INDEX:

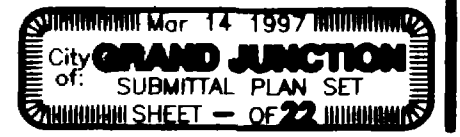
- 1 - COVER
- 2 - 6 - Plan & Profile
- 7 - Details - Survey Control

DATE DRAWN
Jul 26 1997

SCALE
As Shown

PROJECT NUMBER
3260

SHEET NUMBER
1 OF 7



Rev 2/1/98
02090601.tif

SANITARY SEWER PLANS
HACIENDA

Located in Southeast quarter of Sec 4, T1S, R1W, Ute M
Grand Junction, Mesa County, Colorado

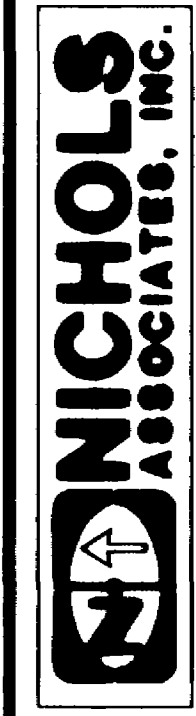
APPROVED FOR CONSTRUCTION:	INITIAL ACCEPTANCE:
CITY OF GRAND JUNCTION	CITY OF GRAND JUNCTION
DATE	DATE

DESIGNED BY	DRAWN BY	SURVEY DATE

NO.	DATE	REMARKS

SANITARY SEWER "AS-BUILT" PLANS
HACIENDA

CIVIL ENGINEERING • PHOTOGRAMMETRY • SURVEYING
751 Horizon Court • Grand Junction, Colorado 81506 • Phone: 970-245-7101

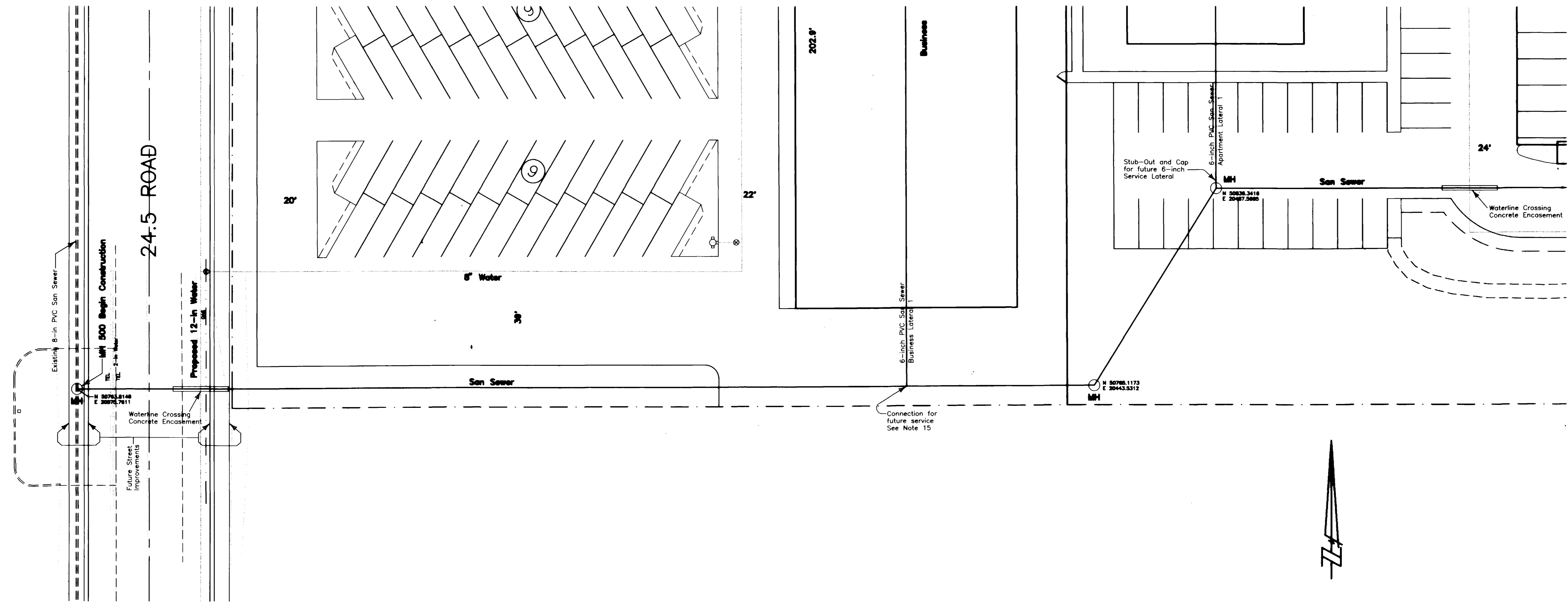


DATE DRAWN
Jul 26 1997

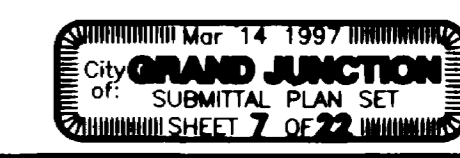
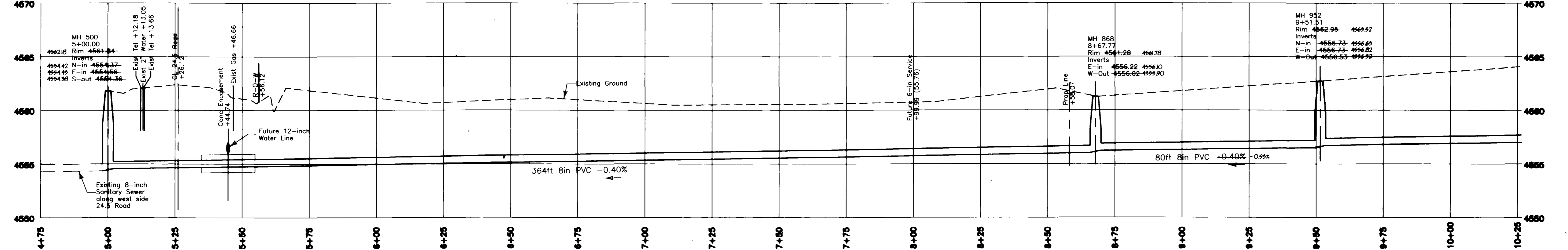
SCALE
1 in = 20 feet

PROJECT NUMBER
3260

SHEET NUMBER
2 OF 7



SCALE:
HORIZ: 1 inch = 20 feet
VERT: 1 inch = 5 feet



Rev 2/1/98

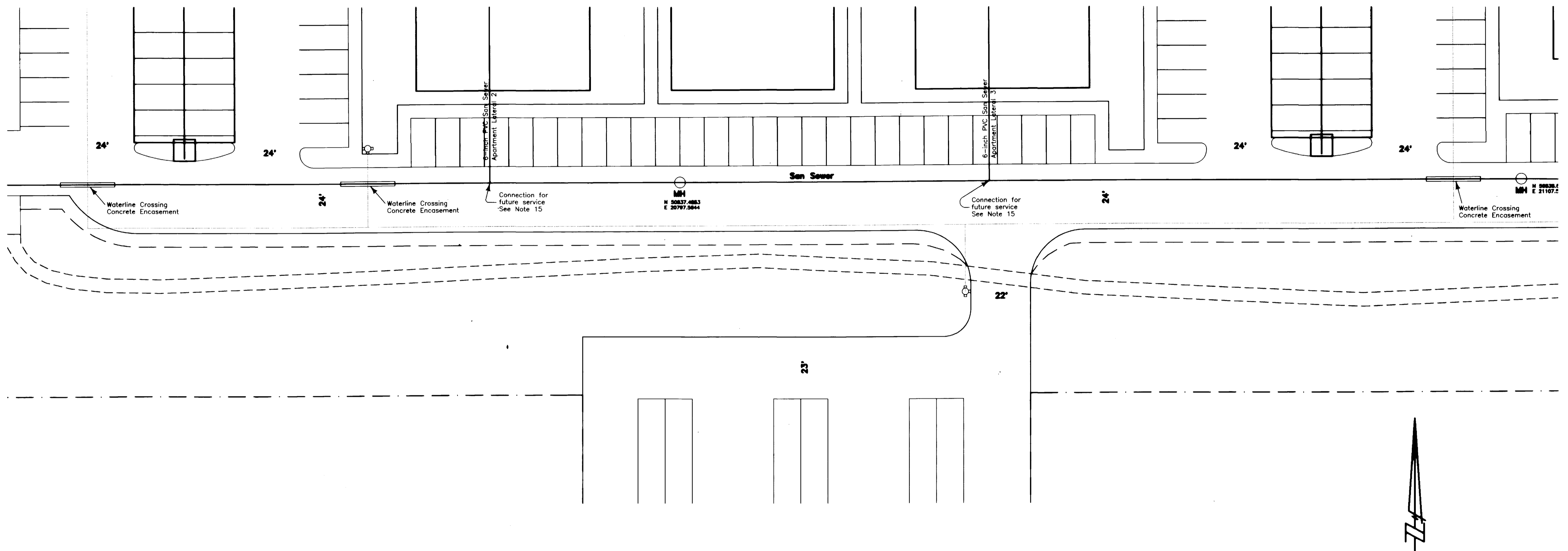
SANITARY SEWER PLANS HACIENDA

Located in Southeast quarter of Sec 4, T1S, R1W, Ute M
Grand Junction, Mesa County, Colorado

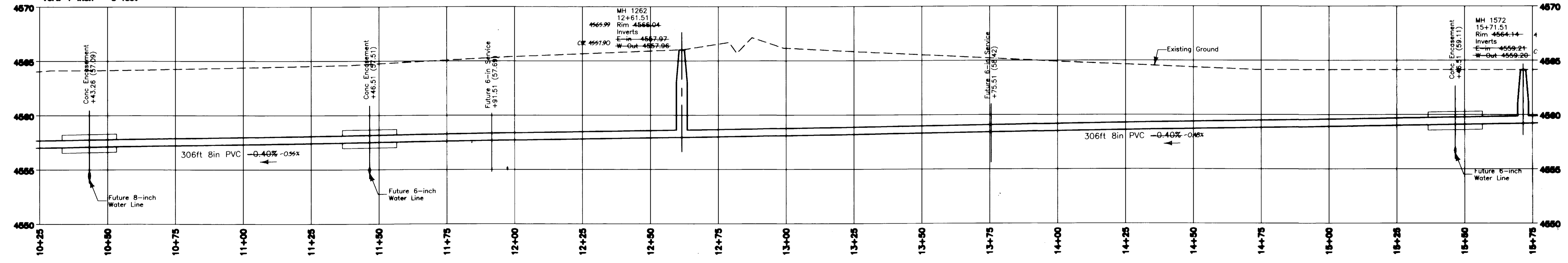
APPROVED FOR CONSTRUCTION:	INITIAL ACCEPTANCE:
CITY OF GRAND JUNCTION _____ DATE _____	CITY OF GRAND JUNCTION _____ DATE _____

DESIGNED BY	DRAWN BY	SURVEY DATE

NO.	DATE	REMARKS



SCALE:
 Horiz: 1 inch = 20 feet
 Vert: 1 inch = 5 feet



SANITARY SEWER "AS-BUILT" PLANS
HACIENDA

CIVIL ENGINEERING • PHOTOGRAMMETRY • SURVEYING
 751 Horizon Court • Grand Junction, Colorado 81506 • Phone: 970-245-7101



DATE DRAWN
 Jul 26 1997

SCALE
 1 in = 20 feet

PROJECT NUMBER
 3260

SHEET NUMBER
 3 OF 7

City of GRAND JUNCTION
 SUBMITTAL PLAN SET
 SHEET # 0222

SANITARY SEWER PLANS
HACIENDA

Located in Southeast quarter of Sec 4, T1S, R1W, Ute M
Grand Junction, Mesa County, Colorado

APPROVED FOR CONSTRUCTION:

CITY OF GRAND JUNCTION

INITIAL ACCEPTANCE:

CITY OF GRAND JUNCTION

DESIGNED BY

DRAWN BY

SURVEY DATE

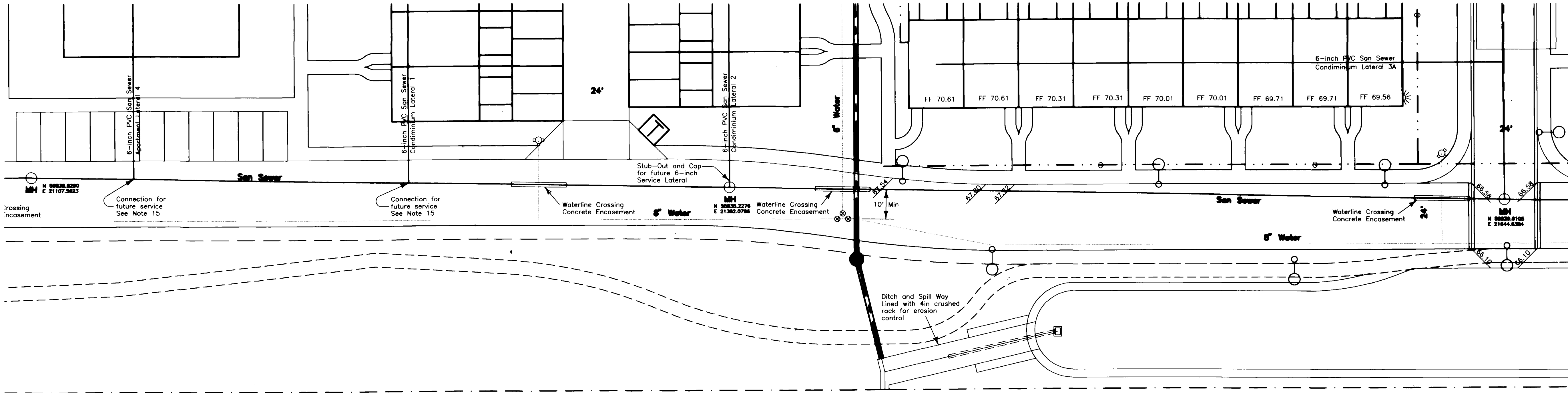
REVISIONS

NO.	DATE	REMARKS

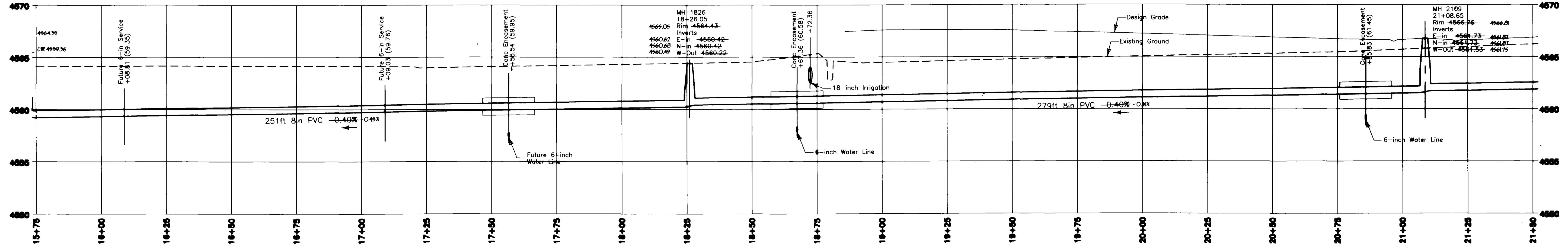
SANITARY SEWER "AS-BUILT" PLANS

HACIENDA

CIVIL ENGINEERING • PHOTOGRAMMETRY • SURVEYING
751 Horizon Court • Grand Junction, Colorado 81506 • Phone: 970-243-7101



SCALE:
HORIZ: 1 inch = 20 feet
VERT: 1 inch = 5 feet



City of GRAND JUNCTION
SUBMITTAL PLAN SET
SHEET 8 OF 22

DATE DRAWN
Jul 28 1997

SCALE
1 in = 20 feet

PROJECT NUMBER
3260

SHEET NUMBER
4 OF 7

SANITARY SEWER PLANS HACIENDA

Located in Southeast quarter of Sec 4, T1S, R1W, Ute M
Grand Junction, Mesa County, Colorado

APPROVED FOR CONSTRUCTION:

CITY OF GRAND JUNCTION

INITIAL ACCEPTANCE:

CITY OF GRAND JUNCTION

DESIGNED BY

DRAWN BY

SURVEY DATE

REVISIONS

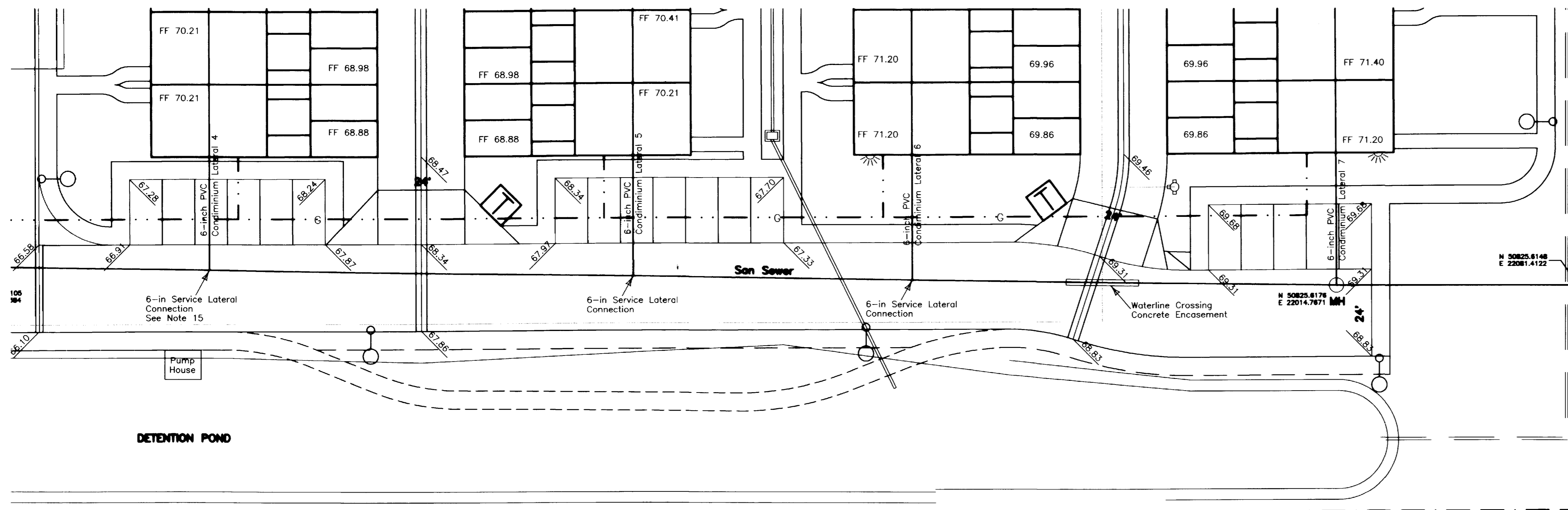
NO.	DATE	REMARKS	BY

SANITARY SEWER "AS-BUILT" PLANS

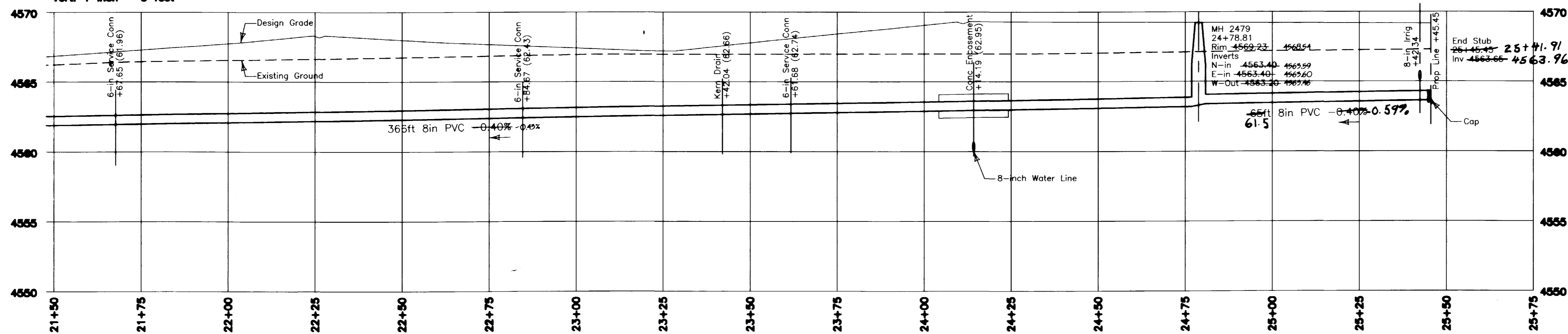
HACIENDA



CIVIL ENGINEERING • PHOTOGRAMMETRY • SURVEYING
751 Horizon Court • Grand Junction, Colorado 81506 • Phone: 970-245-7101



SCALE:
 Horiz: 1 inch = 20 feet
 Vert: 1 inch = 5 feet



City of GRAND JUNCTION
 SUBMITTAL PLAN SET
 SHEET 10 OF 22

DATE DRAWN

Jul 28 1997

SCALE

1 in = 20 feet

PROJECT NUMBER

3260

SHEET NUMBER

5 OF 7

SANITARY SEWER PLANS HACIENDA

Located in Southeast quarter of Sec 4, T1S, R1W, Ute M
Grand Junction, Mesa County, Colorado

APPROVED FOR CONSTRUCTION:

CITY OF GRAND JUNCTION

INITIAL ACCEPTANCE:

CITY OF GRAND JUNCTION

DESIGNED BY _____
DRAWN BY _____
SURVEY DATE _____

NO.	DATE	REMARKS

SANITARY SEWER "AS-BUILT" PLANS
HACIENDA

CIVIL ENGINEERING • PHOTOGRAMMETRY • SURVEYING
751 Herston Court • Grand Junction, Colorado 81506 • Phone: 970-245-7101



DATE DRAWN
Jul 26 1997

SCALE
1 in = 20 feet

PROJECT NUMBER
3260

SHEET NUMBER
6 OF 7

