

Item No.	Description	Unit	TRUNK sht 4	TRUNK sht 5	SID sht 5	TRUNK sht 6	SID sht 6	SID sht 7	SID sht 8	SID sht 9	SID sht 10	SID sht 11	SID sht 12	SID sht 13	SID sht 14	SID sht 15	TRUNK MISC	SID MISC	TRUNK Quantity	SID Quantity	Total Estimated Quantity	Actual Quantity	Comments
20.1	Construct 8" SDR 35 PVC sanitary sewer.	LF	470	500		33	468	147											1003	615	1618		
20.4	A PVC plug shall be secured water tight but not grouted in a Kor-n-seal gasket in the manhole wall so it can be removed for future tie-in. Grout the manhole base for all inverts.	EA				1													1	0	1		
21.3	Remove existing plug and connect proposed sewerline.	EA	1																1	0	1		
24.1	Construct sanitary sewer tap, service, and plug, 4" unless noted otherwise. Tap location shown is approximate only - Contractor shall coordinate with homeowner to determine desired tap location.																						
	4" service tap (includes wye, riser pipe and bend)	EA			1		2	1	2		1	1	1	2	1	1			0	13	13		
	Service trench length with one 4" pipe (includes cleanouts, if any)	LF			26		22	5	44	81	5	308	16	326	68	78			0	979	979		
	Service trench length with two 4" pipes (includes cleanouts, if any)	LF							228										0	228	228		
61.1	Construct drop MH connection, including flowable fill. (This does not include the MH.)	EA				1													1	0	1		
61.2	Provide MH corrosion protection per Special Provisions.	EA				1													1	0	1		
64.1	Construct standard 4' dia. MH.																						
	<8' depth	EA					1												0	1	1		
	8'-12' depth	EA					2												0	2	2		
	>12' depth	EA	1	2		1		1											4	1	5		
64.3	Construct 4' dia. MH with pipe laid through the MH.	EA	1																1	0	1		
81.1	Overexcavate trench below required bedding as directed by Engineer, dispose of unsuitable materials, and replace with granular stabilization material.	CY															50		50	0	50		
82.1	Furnish and install pit run trench backfill material as directed by Engineer.	TON															300	300	300	300	600		
90.1	Pothole and expose existing sanitary sewer pipeline prior to construction and verify elevation. If there is a design conflict, notify Engineer.	EA		2															2	0	2		
201.2	Clear, grub, remove, and dispose of all trees, vegetation, and/or debris as required for construction.	LS															0.5	0.5	0.5	0.5	1		
202.42 & 300/400.1	Remove asphalt pavement as required for construction. Construct pavement structure per Special Provisions.																						
	F 1/2 Road, 3" AC on 8" ABC	SY		49															49	0	49		
	Larkspur, 3" AC on 6" ABC	SY							228		72		447						0	747	747		
210.64	Remove and reset fence as required for construction.	LF	20	20			15												40	15	55		
212/213.2	Seed and mulch per Special Provisions all surface areas disturbed by construction that will not be hard surfaced, graveled, or otherwise landscaped.	LS															1		1	0	1		
212/213.3	Restore landscaping, including sod where removed, irrigation systems, and other features.	LS															1		0	1	1		
304.5	Construct 6" thick ABC shoulder.	SY		93.3					20					133					93.3	153	246.3		
304.6	Provide 3" thick No. 6 (CDOT Table 703-1) aggregate replacement surface course.	SY		153			228												153	228	381		
304.8	Provide decorative rock replacement surface course over plastic. Match adjacent existing material.	SY								112	2								0	114	114		
420.1	Install geofabric as shown and per Special Provisions.	SY															20		20	0	20		
625.1	Provide construction surveying and red-lined plans per as-constructed conditions.	LS															0.25	0.75	0.25	0.75	1		
626.1	Provide all mobilization, bonds, insurances, and other incidentals and cleanup necessary to perform the work.	LS															0.5	0.5	0.5	0.5	1		
630.1	Provide traffic control in accordance with General Contract Conditions.	LS															0.5	0.5	0.5	0.5	1		
1997.1	Provide newsletters per Special Conditions.	LS															0.25	0.75	0.25	0.75	1		
1999	Force account	LS															0.25	0.75	0.25	0.75	1		

# DRAFTING STANDARDS AND ABBREVIATIONS

## ENTITY DESCRIPTION

LINE TYPE	BLOCK	SPACING
PROPERTY OR TRACT LINE	ROW	-
RAILROAD	CONTINUOUS RAIL	4
EDGE OF PAVEMENT	DASHED	-
RIGHT OF WAY	ROW	-
BARBED WIRE FENCE	CONTINUOUS BARB	15
CHAIN LINK FENCE	CONTINUOUS CHAIN	15
BARRIER TYPE FENCE	CONTINUOUS BARRIER	15
WOVEN WIRE FENCE	CONTINUOUS WOVEN	15
WOOD FENCE	CONTINUOUS WOOD	15
EXISTING GUARD RAIL	CONTINUOUS GUARD	5
NEW GUARD RAIL	CONTINUOUS NEWGUARD	5
RETAINING WALL	CONTINUOUS RETAIN	6
SIDEWALK	CONTINUOUS	-
CURB & GUTTER	CONTINUOUS	-
CURB, GUTTER & SIDEWALK	CONTINUOUS	-
BURIED TELEPHONE CABLE	CONTINUOUS	-
BURIED ELECTRIC CABLE	CONTINUOUS	-
GAS LINE	CONTINUOUS	-
WATER LINE	CONTINUOUS	-
SANITARY SEWERS	CONTINUOUS AROW	-
STORM SEWERS	CONTINUOUS AROW	-
UNDERGROUND IRRIG. PIPE	CONTINUOUS AROW	-
SIPHON PIPE	CONTINUOUS AROW	-
EARTH DITCH	DIVIDE	-
CONCRETE DITCH	CONTINUOUS	-
CULVERT	DASHED	-
CULVERT WITH HEADWALL	DASHED	-
CULVERT WITH END SECTION	DASHED	-
MONUMENT LINE	CONTINUOUS	-
CONTROL LINE	CONTINUOUS	100
MATCH LINE	CONTINUOUS	-

## LIST OF ABBREVIATIONS

AASHTO	AMERICAN ASSOCIATION OF STATE HIGHWAY & TRANSPORTATION OFFICIALS
AC	ASBESTOS CEMENT
ASTM	AMERICAN SOCIETY FOR TESTING MATERIALS
AWWA	AMERICAN WATER WORKS ASSOCIATION
BC	BACK OF CURB
BCR	BEGIN CURB RETURN
BF	BUTTERFLY
BOP	BEGINNING OF PROJECT
BOT	BOTTOM
BW	BACK OF WALK
C	CHORD LENGTH
CAP	CORRUGATED ALUMINUM PIPE
CATV	CABLE TV
CDOT	COLORADO DEPARTMENT OF TRANSPORTATION
CG & SW	CURB, GUTTER & SIDEWALK
CH	CHORD
CI	CAST IRON
CL	LONG CHORD
CL	CENTER LINE
CL or CI	CLEAR
CMP	CORRUGATED METAL PIPE
C.O.	CLEAN OUT (SEWER SERVICE)
CONC	CONCRETE
CP	CONTROL POINT
CS	SHORT CHORD
CSP	CORRUGATED STEEL PIPE
CU	COPPER
D <sub>a</sub>	DEGREE OF CURVE ARC
D <sub>c</sub>	DEGREE OF CURVE CHORD
DI	DUCTILE IRON
DR or DWY	DRIVEWAY
E	EASTING
E	EXTERNAL ORDINATE
ECR	END CURB RETURN
EL or ELEV	ELEVATION
ELEC	ELECTRIC
EOP	END OF PROJECT
EP	EDGE OF PAVEMENT
EX	EXISTING
FB	FULL BODY
FC	FACE OF CURB
FF	FINISH FLOOR
FG	FINISHED GRADE
FL	FLOW LINE
FL	FLANGE
FS	FAR SIDE
FTG	FOOTING
GV	GATE VALVE
I	DEFLECTION ANGLE
I <sub>c</sub>	INTERIOR ANGLE
IRRIG	IRRIGATION
K	ABSCISSA OF THE SHIFTED PC
L	LENGTH OF ARC
LF	LINEAR FEET
LL	LONG ARC
LS	SHORT ARC
LT	LEFT
M	MIDDLE ORDINATE
MH	MANHOLE
MJ	MECHANICAL JOINT
MW	MILL WRAP
N	NORTHING
N/A	NOT APPLICABLE
NIC	NOT IN CONTRACT
NRCP	NON-REINFORCED CONCRETE PIPE
NS	NEAR SIDE
NTS	NOT TO SCALE
PC	POINT OF CURVATURE
PCC	PORTLAND CEMENT CONCRETE
PI	POINT OF INTERSECTION
PR	PROPOSED
PRC	POINT OF REVERSE CURVATURE
PT	POINT OF TANGENCY
PVC	POLYVINYL CHLORIDE
R	RADIUS
RCP	REINFORCED CONCRETE PIPE
REQ'D	REQUIRED
RG	RESTRAINED GLANDS
RL	LONG RADIUS
ROW, R/W, RW	RIGHT OF WAY
RP	RADIUS POINT
RR	RAIL ROAD
RS	SHORT RADIUS
RT	RIGHT
S	SLOPE
SCH	SCHEDULE
STA	STATION
STL	STEEL
(TYP)	TYPICAL
T	LENGTH OF TANGENT
TBM	TEMPORARY BENCH MARK
TC	TOP OF CURB OR CONCRETE
TH	TEST HOLE
VC	VERTICAL CURVE
VCP	VITRIFIED CLAY PIPE
VPC	VERTICAL POINT OF CURVATURE
VPI	VERTICAL POINT OF INTERSECTION
VPT	VERTICAL POINT OF TANGENCY
Δ	DELTA ANGLE

FACILITY OR SURFACE TREATMENT	EXISTING	PROPOSED	REMOVE & REPLACE
ASPHALT PAVEMENT	[Pattern]	[Pattern]	[Pattern]
CONCRETE (C. G. SW, SLABS)	[Pattern]	[Pattern]	[Pattern]
CONCRETE (DWYs, RAMPS)	[Pattern]	[Pattern]	[Pattern]
CONCRETE (DECORATIVE)	[Pattern]	[Pattern]	[Pattern]
AGGREGATE GRAVEL	[Pattern]	[Pattern]	[Pattern]
LANDSCAPE ROCK ON PLASTIC	[Pattern]	[Pattern]	[Pattern]
GRASS SOD	[Pattern]	[Pattern]	[Pattern]
BUILDING	[Pattern]	[Pattern]	[Pattern]

## PLOTTING PARAMETERS

COLOR NAME	PEN SIZE	SHADING
RED	0.50	100%
YELLOW	0.35	100%
GREEN	0.70	100%
CYAN	0.50	100%
BLUE	0.18	100%
MAGENTA	0.50	100%
WHITE	0.18	100%
8	0.18	100%
9	0.35	100%
16	0.25	100%
30	0.13	100%
31	0.07	100%
32	0.10	100%
250	0.25	80%
251	0.18	55%
252	0.18	40%
253	0.25	25%

## BLOCKS

BLOCK NAME	SYMBOL
REDUCER	◼
CURBSTOP	◼
PULL	◻
SIGNAL	◻
SIGN	+
TELEMAN	⊙
MANHOLE	○
BENCH	⊕
HEAD	⊙
MAILBOX	□
IRRUPUMP	⊞
STUMP	•
LITE	⊙
HYDRANT	⊙
OVALVE	⊞
VALVE	⊞
TELEBOX	△
POWER	⊙
GUY	⊞
TREE	⊙
BUSH	⊙
MCSM	⊙
WATERMETER	⊙
WATERHYDRANT	⊞
PIN	⊞
YLITE	⊞
GRATE	▣
AROW	◄
BARB	×
CHAIN	◇
BARRIER	///
WOVEN	///
WOOD	•
GUARD	□
NEWGUARD	◼
RAIL	

DESCRIPTION DATE

REVISION Δ \_\_\_\_\_  
 REVISION Δ \_\_\_\_\_  
 REVISION Δ \_\_\_\_\_

HORIZONTAL  
 VERTICAL

WILLIAMS ENGINEERING  
 1231 19 ROAD, FRUITA, COLORADO 81521-9689  
 (970) 858-1014 PHONE (970) 858-1007 FAX

NORTHFIELD ESTATES TRUNKLINE  
 EXTENSION & SEWERLINE IMPROVEMENTS  
 DRAFTING STANDARDS & ABBREVIATIONS

SHEET 3

FILENAME  
 N\_FLD-03.DWG

SHADING AND TEXTURE LEGEND

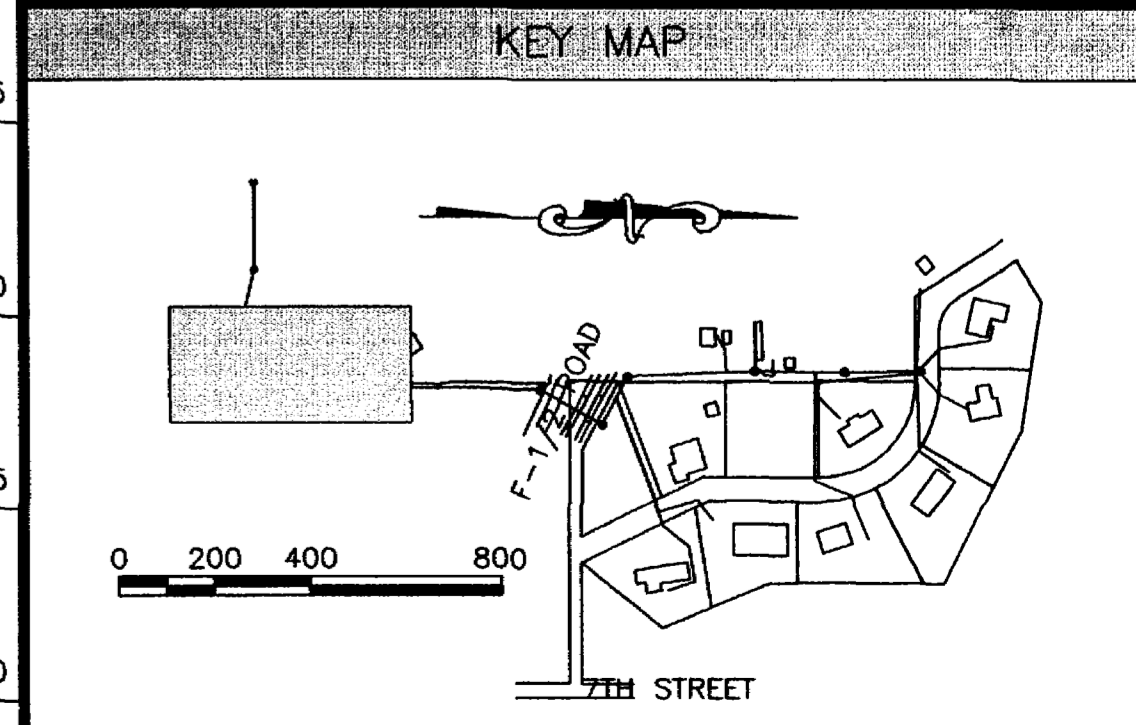
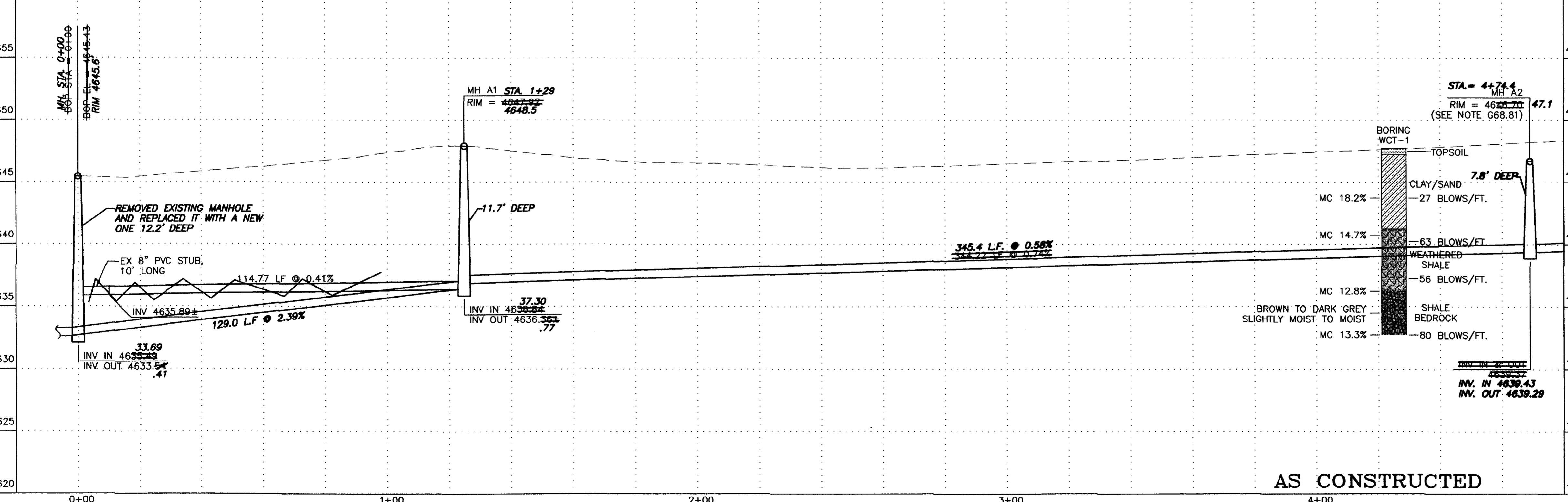
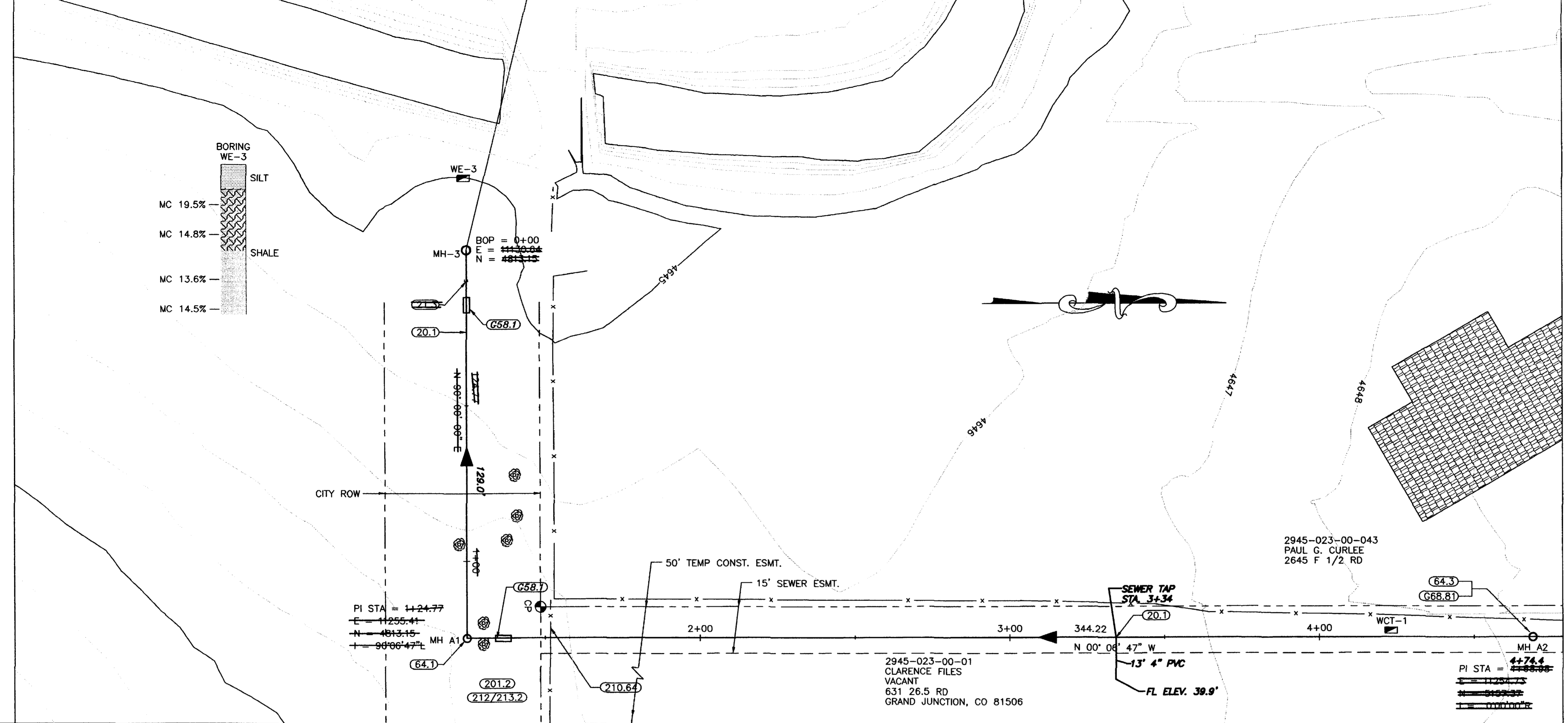
FACILITY OR SURFACE TREATMENT	EXISTING	PROPOSED	REMOVE & REPLACE
ASPHALT PAVEMENT	[Pattern]	[Pattern]	[Pattern]
CONCRETE (C, G, SW, SLABS)	[Pattern]	[Pattern]	[Pattern]
AGGREGATE GRAVEL	[Pattern]	[Pattern]	[Pattern]
LANDSCAPE ROCK ON PLASTIC	[Pattern]	[Pattern]	[Pattern]
GRASS SOD	[Pattern]	[Pattern]	[Pattern]
BUILDING	[Pattern]	[Pattern]	[Pattern]

COORDINATES (IN METERS)

PT	DESC	STATION	OFFSET	NORTHING	EASTING	ELEV.
CP-1				4836.96	11305.13	4648.06
CP				4836.91	11245.36	4647.10

CONSTRUCTION NOTES

- 20.1 Construct 8" SDR 35 PVC sanitary sewer.
- 21.3 Remove existing plug and connect proposed sewerline.
- G58.1 Construct cut-off wall per Standard Specifications.
- 64.1 Construct standard 4' dia. MH.
- 64.3 Construct 4' dia. MH with pipe laid through the MH.
- G68.81 Install inverted MH frame and lid on top of MH cone without adjusting rings. The lid shall be approximately 1.5 feet below existing grade. Use rubberneck seal between frame and cone and lid and frame.
- 201.2 Clear, grub, remove, and dispose of all trees, vegetation, and/or debris as required for construction.
- 210.64 Remove and reset fence as required for construction.
- 212/213.2 Seed and mulch per Special Provisions all surface areas disturbed by construction that will not be hard surfaced or graveled.

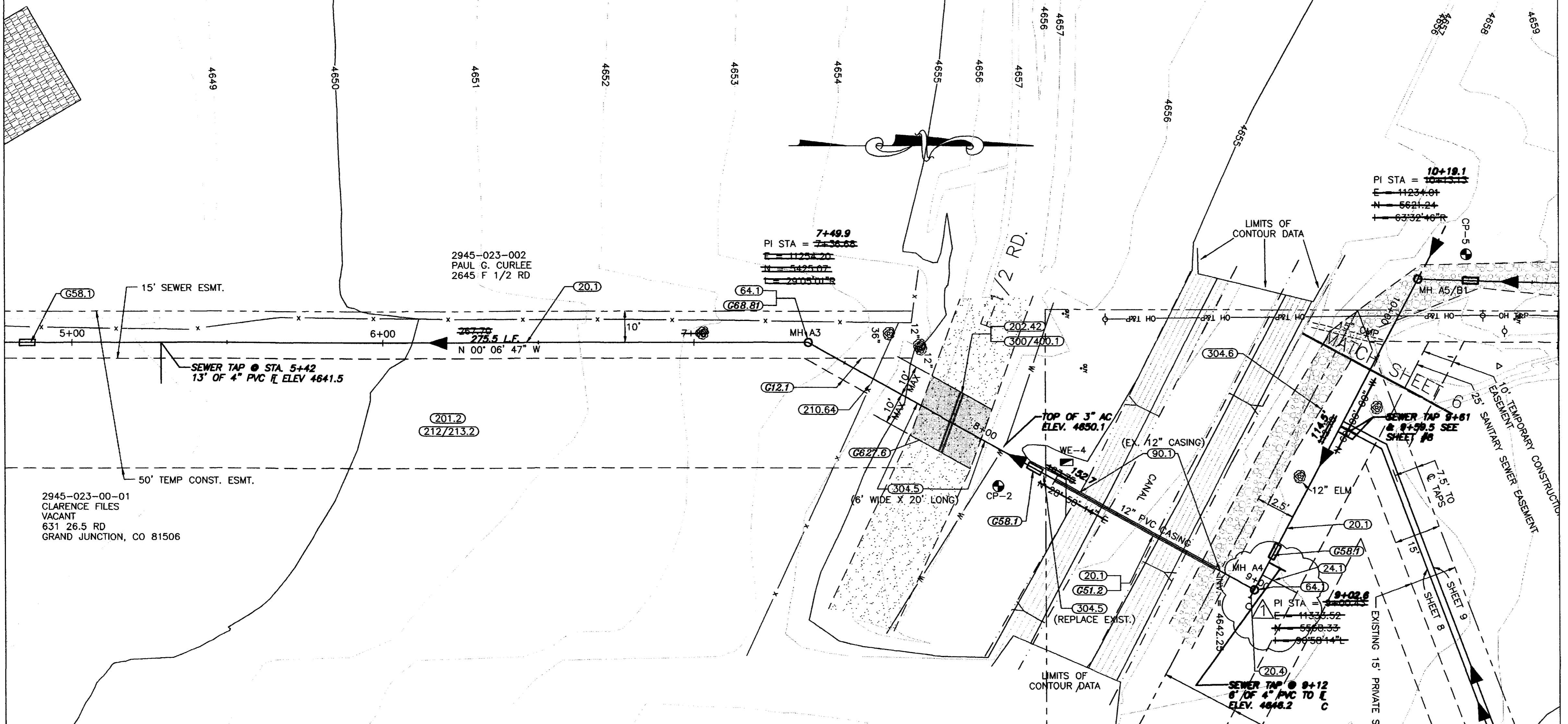


REVISION	DESCRIPTION	DATE	SCALE	PLAN	PROFILE	SECTIONS
REVISION A	AS BUILT PER INSPECTORS DRAWING		HORIZONTAL	0 10 20 40	0 10 20 40	
REVISION B			VERTICAL	0 2.5 5 10		

**WILLIAMS ENGINEERING**  
 1231 19 ROAD, FRUITA, COLORADO 81521-9689  
 (970) 858-1014 PHONE (970) 858-1007 FAX

**NORTHFIELD ESTATES TRUNKLINE  
 EXTENSION & SEWERLINE IMPROVEMENTS**  
 Sta. 0+00 to 4+80

SHEET 4  
 FILENAME: RCP01001.DWG



**SHADING AND TEXTURE LEGEND**

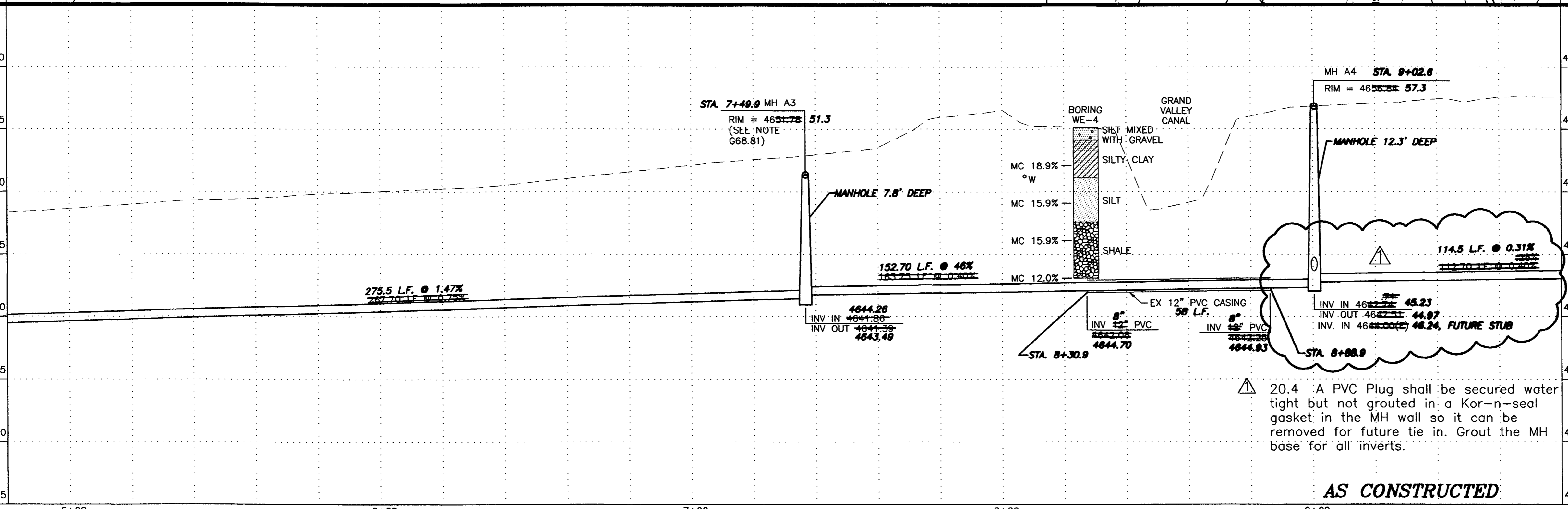
FACILITY OR SURFACE TREATMENT	EXISTING	PROPOSED	REMOVE & REPLACE
ASPHALT PAVEMENT	[Pattern]	[Pattern]	[Pattern]
AGGREGATE GRAVEL	[Pattern]	[Pattern]	[Pattern]
LANDSCAPE ROCK ON PLASTIC	[Pattern]	[Pattern]	[Pattern]
GRASS SOD	[Pattern]	[Pattern]	[Pattern]
BUILDING	[Pattern]	[Pattern]	[Pattern]

**COORDINATES (IN METERS)**

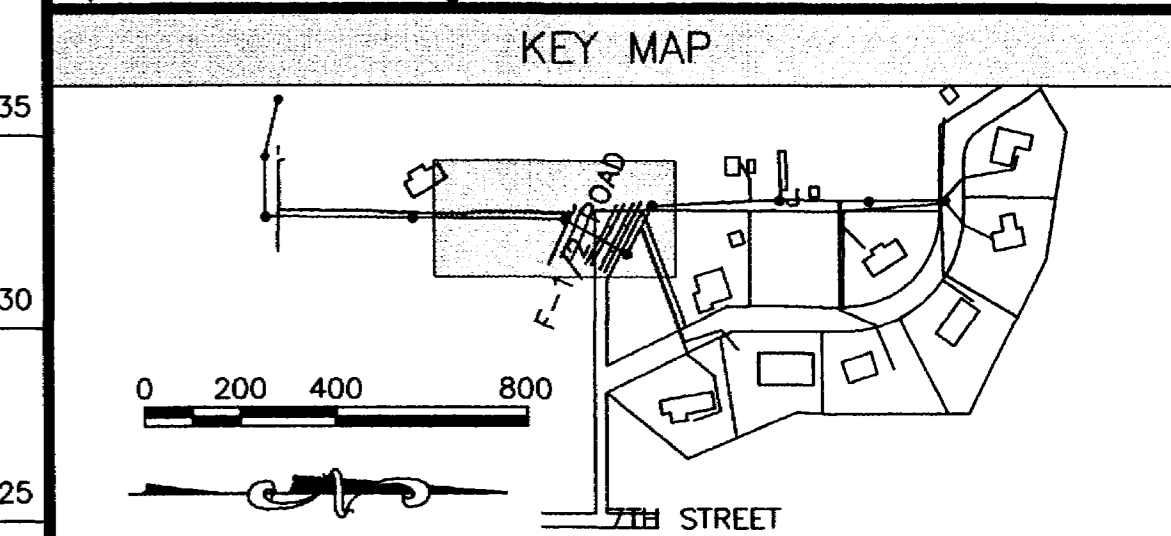
PT	DESC	STATION	OFFSET	NORTHING	EASTING	ELEV.
CP-2				5486.08	11299.98	4655.50
CP-5				5636.83	11225.97	4657.30

**CONSTRUCTION NOTES**

- G12.1 The proposed easement will be obtained by the Owner prior to construction.
- 20.1 Construct 8" SDR 35 PVC sanitary sewer.
- 24.1 Construct sanitary sewer tap, service, and plug, 4" unless noted otherwise. Tap location shown is approximate only - Contractor shall coordinate with homeowner to determine desired tap location.
- G51.2 Provide support of through-pipe to maintain grade through casing per Standard Specifications.
- G58.1 Construct cut-off wall per Standard Specifications.
- 64.1 Construct standard 4' dia. MH.
- G68.81 Install inverted MH frame and lid on top of MH cone without adjusting rings. The lid shall be approximately 1.5 feet below existing grade. Use rubberneck seal between frame and cone and lid and frame.
- 90.1 Pothole and expose existing sanitary sewer pipeline prior to construction and verify elevation. If there is a design conflict, notify Engineer.
- 201.2 Clear, grub, remove, and dispose of all trees, vegetation, and/or debris as required for construction.
- 202.42 Remove asphalt pavement as required for construction.
- 210.64 Remove and reset fence as required for construction.
- 212/213.2 Seed and mulch per Special Provisions all surface areas disturbed by construction that will not be hard surfaced or graveled.
- 300/400.1 Construct pavement structure per Special Provisions.
- 304.5 Construct 6" thick ABC shoulder.
- 304.6 Provide 3" thick No. 6 (CDOT Table 703-1) aggregate replacement surface course.
- 627.6 Provide double 5" wide yellow longitudinal pavement markings.



- 201.2 Clear, grub, remove, and dispose of all trees, vegetation, and/or debris as required for construction.
- 202.42 Remove asphalt pavement as required for construction.
- 210.64 Remove and reset fence as required for construction.
- 212/213.2 Seed and mulch per Special Provisions all surface areas disturbed by construction that will not be hard surfaced or graveled.
- 300/400.1 Construct pavement structure per Special Provisions.
- 304.5 Construct 6" thick ABC shoulder.
- 304.6 Provide 3" thick No. 6 (CDOT Table 703-1) aggregate replacement surface course.
- 627.6 Provide double 5" wide yellow longitudinal pavement markings.



DESCRIPTION	adjust slope, move ser.	DATE	12/22/97
REVISION	add stub		
REVISION	AS BUILT PER INSPECTOR		4/15/98
REVISION			

SCALE	PLAN	PROFILE	SECTIONS
HORIZONTAL	0 10 20 40	0 10 20 40	
VERTICAL		0 2.5 5 10	

**WILLIAMS ENGINEERING**  
 1231 19 ROAD, FRUITA, COLORADO 81521-9689  
 (970) 858-1014 PHONE (970) 858-1007 FAX

**NORTHFIELD ESTATES TRUNKLINE  
 EXTENSION & SEWERLINE IMPROVEMENTS**  
 Sta. 4+80 to 9+80

SHEET 5  
 FILENAME  
 RCP02001.DWG

SHADING AND TEXTURE LEGEND

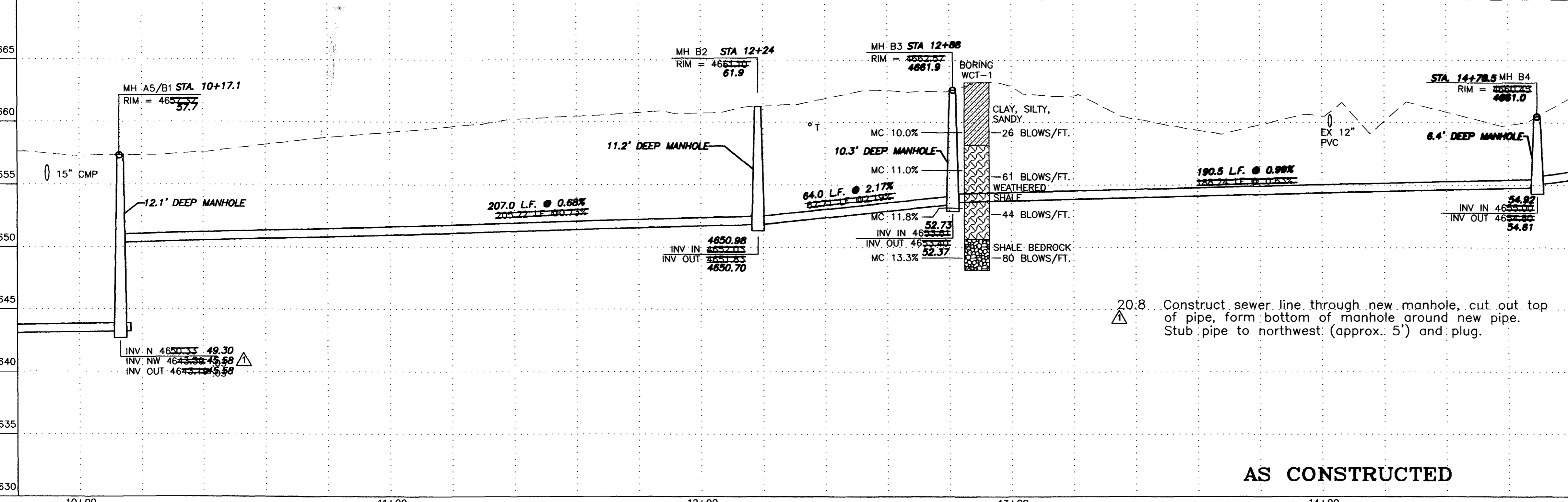
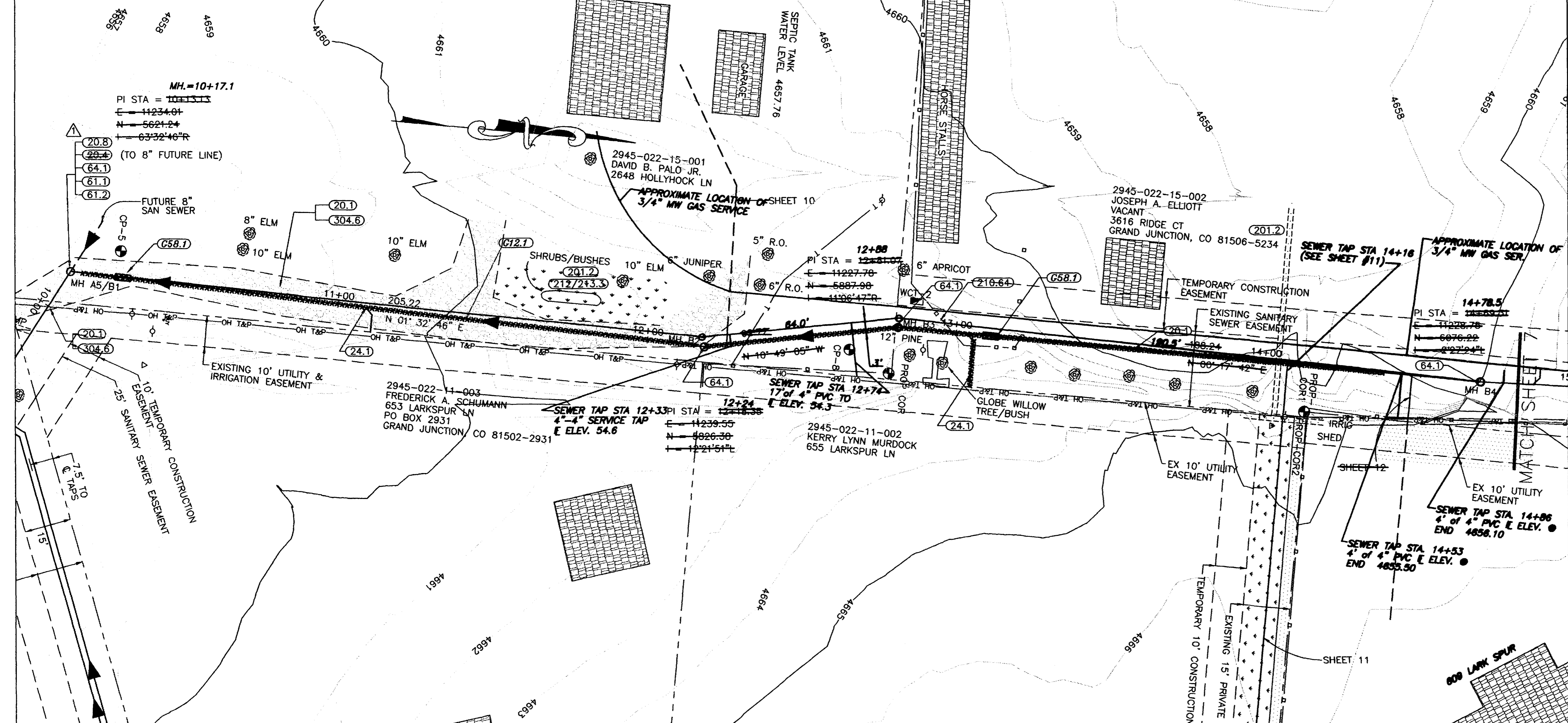
FACILITY OR SURFACE TREATMENT	EXISTING	PROPOSED	REMOVE & REPLACE
ASPHALT PAVEMENT	[Pattern]	[Pattern]	[Pattern]
CONCRETE (C, G, SW, SLABS)	[Pattern]	[Pattern]	[Pattern]
AGGREGATE GRAVEL	[Pattern]	[Pattern]	[Pattern]
LANDSCAPE ROCK ON PLASTIC	[Pattern]	[Pattern]	[Pattern]
GRASS SOD	[Pattern]	[Pattern]	[Pattern]
BUILDING	[Pattern]	[Pattern]	[Pattern]

COORDINATES (IN METERS)

PT	DESC	STATION	OFFSET	NORTHING	EASTING	ELEV.
CP-5				5636.83	11225.97	4657.30
CP-8				5873.00	11236.21	4662.63
PROP COR				5886.15	11242.74	4663.08
PROP-COR1				6020.49	11243.32	4663.74
PROP-COR2				6020.56	11243.46	4663.64
PROP CO				6224.37	11244.51	4671.12

CONSTRUCTION NOTES

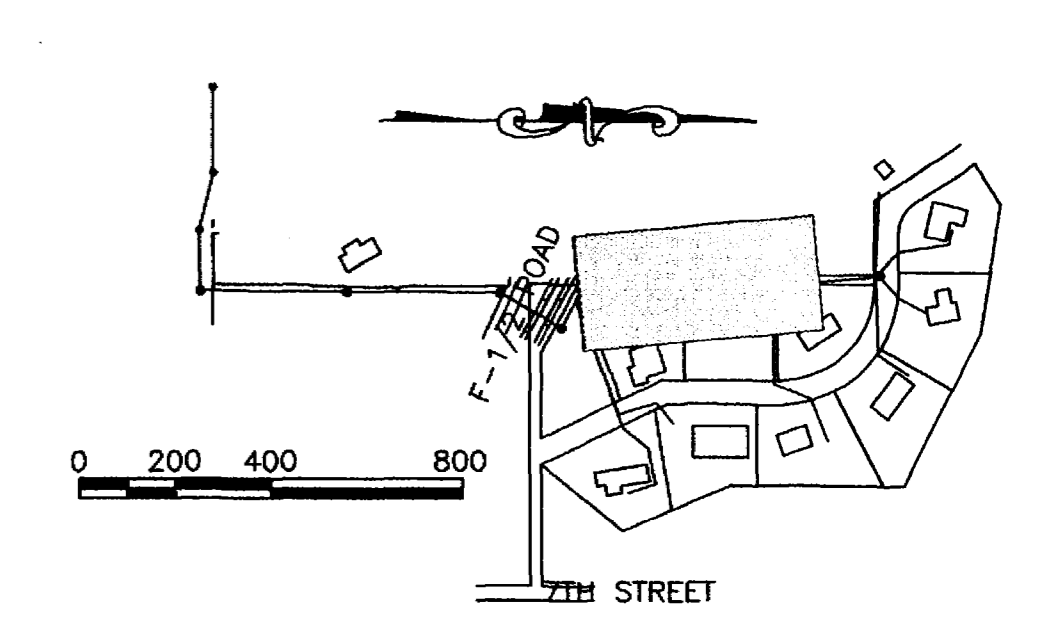
- G12.1 The proposed easement will be obtained by the Owner prior to construction.
- 20.1 Construct 8" SDR 35 PVC sanitary sewer.
- 20.4 A PVC plug shall be secured water tight but not grouted in a Kor-n seal gasket in the MH wall so it can be removed for future tie-in. Grout the MH base for all inverts.
- 24.1 Construct sanitary sewer tap, service, and plug, 4" unless noted otherwise. Tap location shown is approximate only - Contractor shall coordinate with homeowner to determine desired tap location.
- G58.1 Construct cut-off wall per Standard Specifications.
- 61.1 Construct drop MH connection, including flowable fill. (This does not include the MH.)
- 61.2 Provide MH corrosion protection per Special Provisions.
- 64.1 Construct standard 4' dia. MH.
- 201.2 Clear, grub, remove, and dispose of all trees, vegetation, and/or debris as required for construction.
- 210.64 Remove and reset fence as required for construction.
- 212/213.3 Restore landscaping, including sod where removed, irrigation systems, and other features.
- 304.6 Provide 3" thick No. 6 (CDOT Table 703-1) aggregate replacement surface course.



20:8 Construct sewer line through new manhole, cut out top of pipe, form bottom of manhole around new pipe. Stub pipe to northwest (approx. 5') and plug.

AS CONSTRUCTED

KEY MAP



REVISION	DESCRIPTION	DATE
REVISION A	adjust elev.; add/delete note.	12/22/97
REVISION B	AS BUILT PER INSPECTORS DRAWINGS	4/15/98
REVISION C		

SCALE	PLAN	PROFILE	SECTIONS
HORIZONTAL	0 10 20 40	0 10 20 40	
VERTICAL		0 2.5 5 10	

**WILLIAMS ENGINEERING**  
 1231 19 ROAD, FRUITA, COLORADO 81521-9689  
 (970) 858-1014 PHONE (970) 858-1007 FAX

**NORTHFIELD ESTATES TRUNKLINE  
 EXTENSION & SEWERLINE IMPROVEMENTS**  
 Sta. 9+80 to 14+80

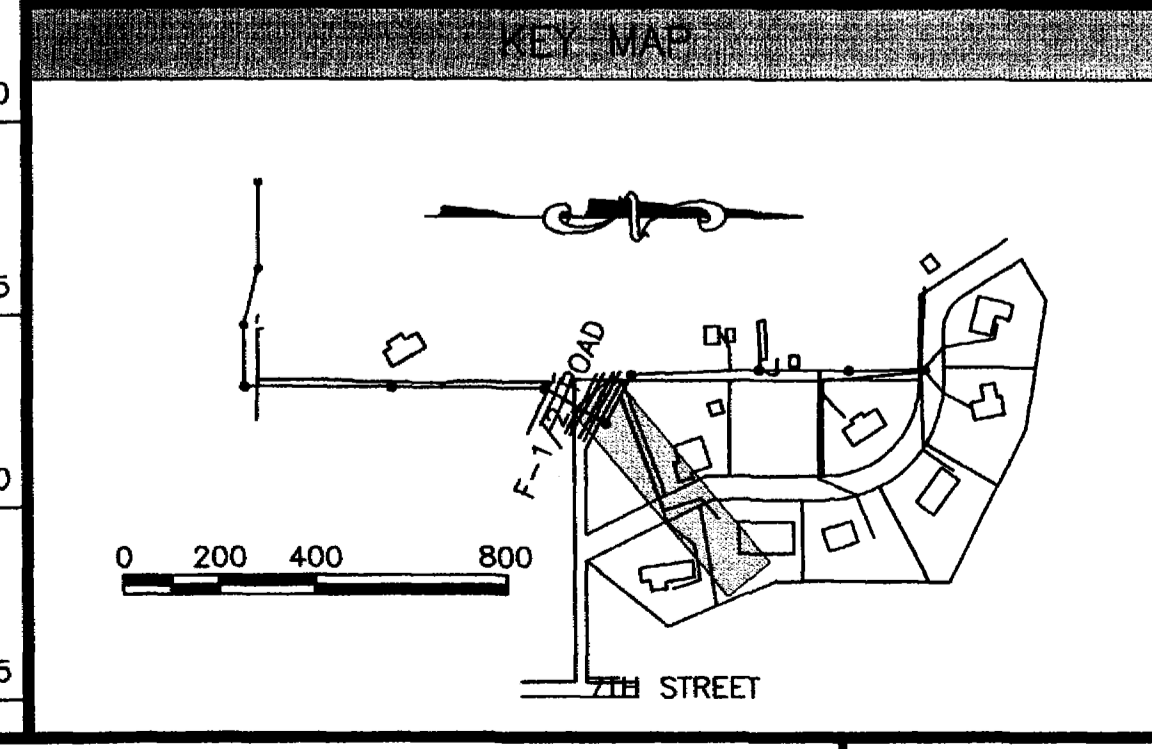
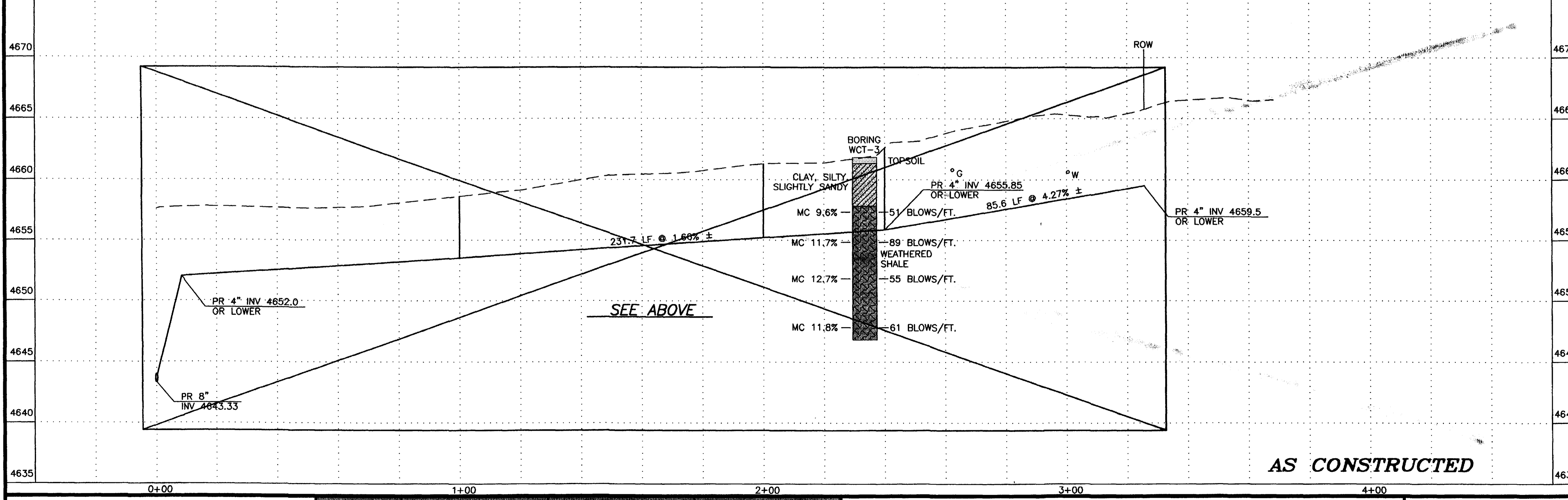
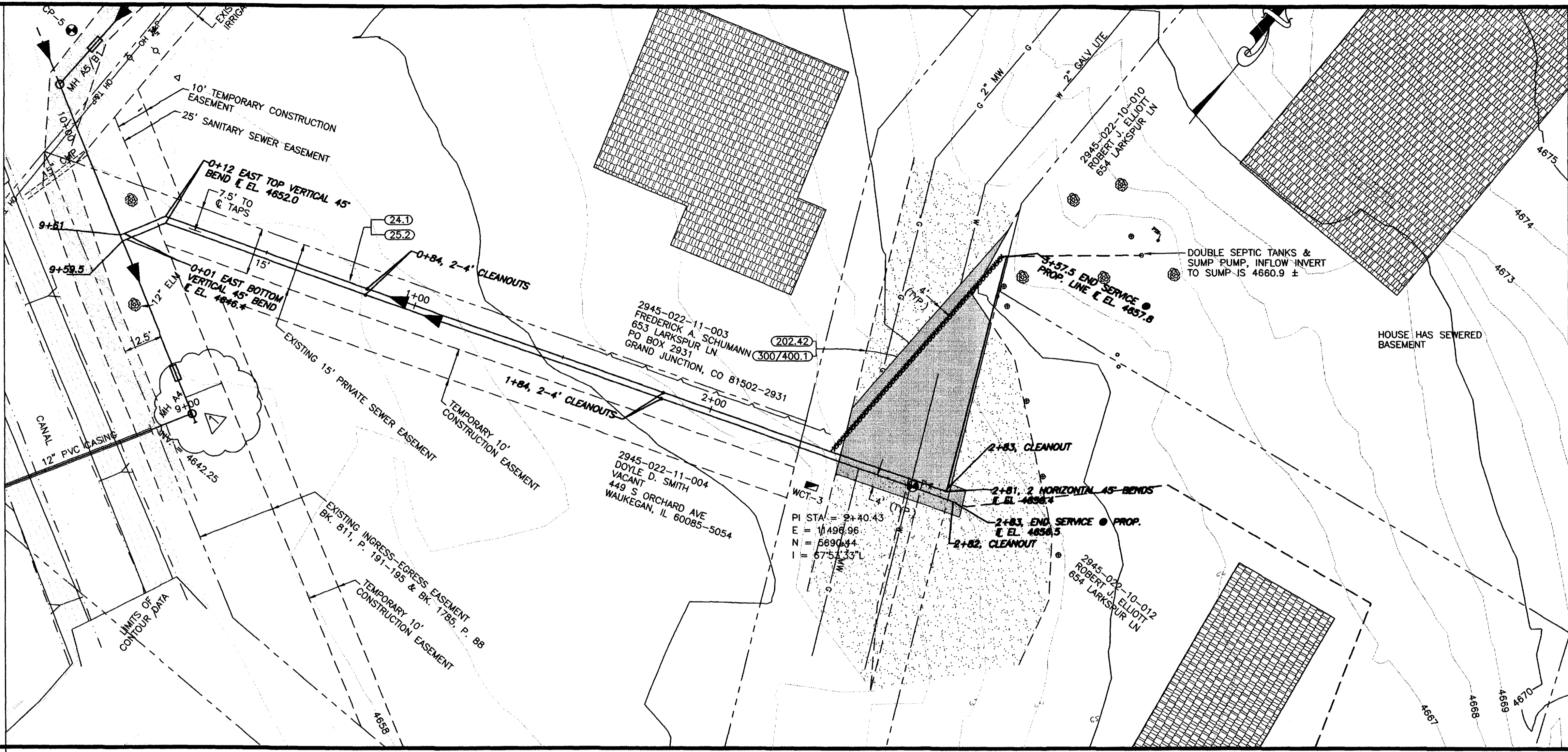
SHEET 6  
 FILENAME  
 RCP03001.DWG

SHADING AND TEXTURE LEGEND

FACILITY OR SURFACE TREATMENT	EXISTING	PROPOSED	REMOVE & REPLACE
ASPHALT PAVEMENT	[Pattern]	[Pattern]	[Pattern]
CONCRETE (C, G, SW, SLABS)	[Pattern]	[Pattern]	[Pattern]
AGGREGATE GRAVEL	[Pattern]	[Pattern]	[Pattern]
LANDSCAPE ROCK ON PLASTIC	[Pattern]	[Pattern]	[Pattern]
GRASS SOD	[Pattern]	[Pattern]	[Pattern]
BUILDING	[Pattern]	[Pattern]	[Pattern]

CP-4	5698.98	11524.09	4662.63
------	---------	----------	---------

- 24.1 Construct sanitary sewer tap, service, and plug, 4" unless noted otherwise. Tap location shown is approximate only - Contractor shall coordinate with homeowner to determine desired tap location.
- G25.2 Install sanitary sewer cleanout per the UPC for each 100 feet, or fraction thereof, of sewer service, and at each horizontal bend. A steel fence post shall be buried beside each cleanout.
- 201.2 Clear, grub, remove, and dispose of all trees, vegetation, and/or debris as required for construction.
- 202.42 Remove asphalt pavement as required for construction.
- 300/400.1 Construct pavement structure per Special Provisions.



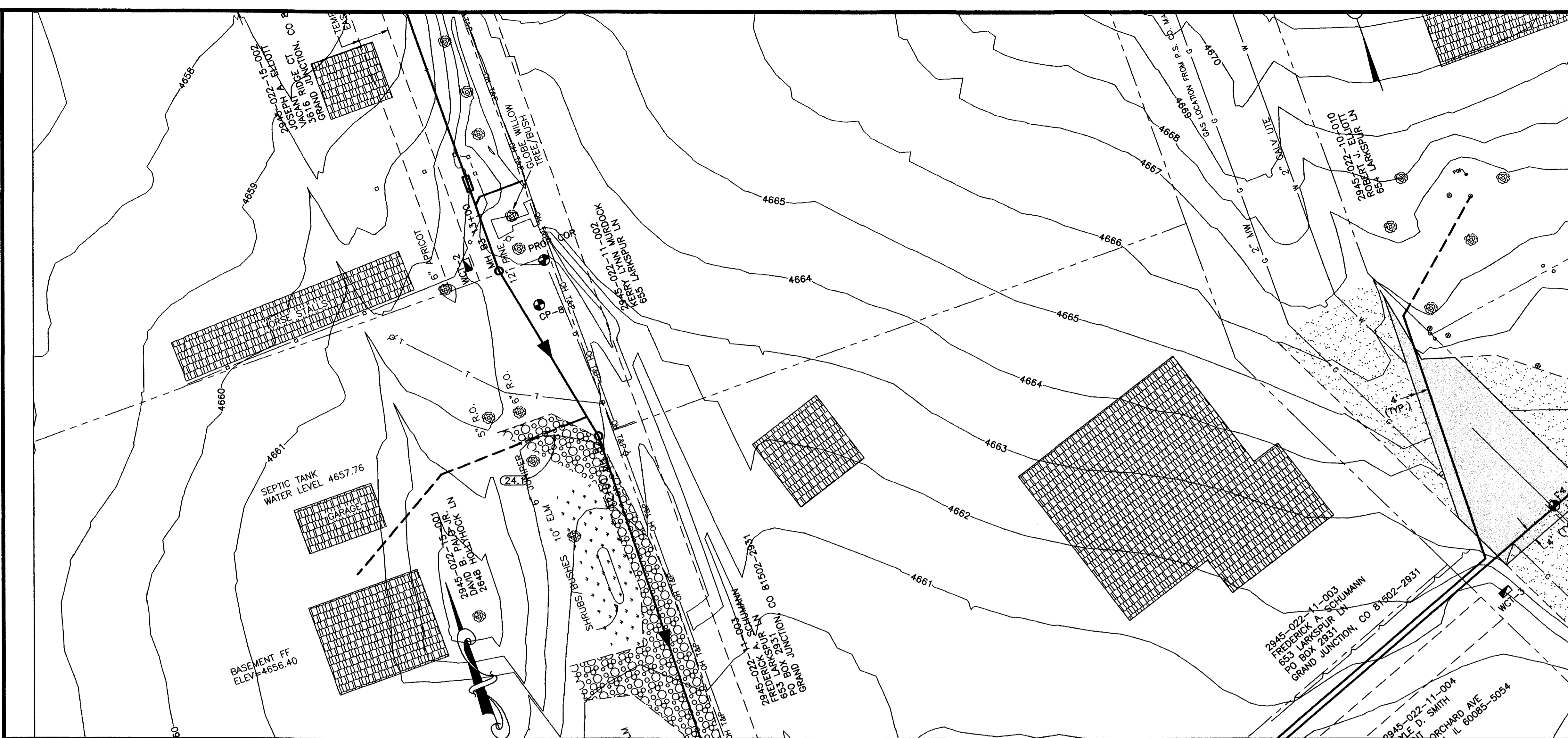
REVISION	DESCRIPTION	DATE
REVISION A	AS BUILT PER INSPECTORS DRAWINGS	4/17/98
REVISION B		
REVISION C		

SCALE	HORIZONTAL	VERTICAL
0 10 20 40	0 10 20 40	0 2.5 5 10

WILLIAMS ENGINEERING  
 1231 19 ROAD, FRUITA, COLORADO 81521-9689  
 (970) 858-1014 PHONE (970) 858-1007 FAX

NORTHFIELD ESTATES TRUNKLINE  
 EXTENSION & SEWERLINE IMPROVEMENTS  
 Sta. 0+00 to 3+92.36

SHEET 9
FILENAME RCP01003

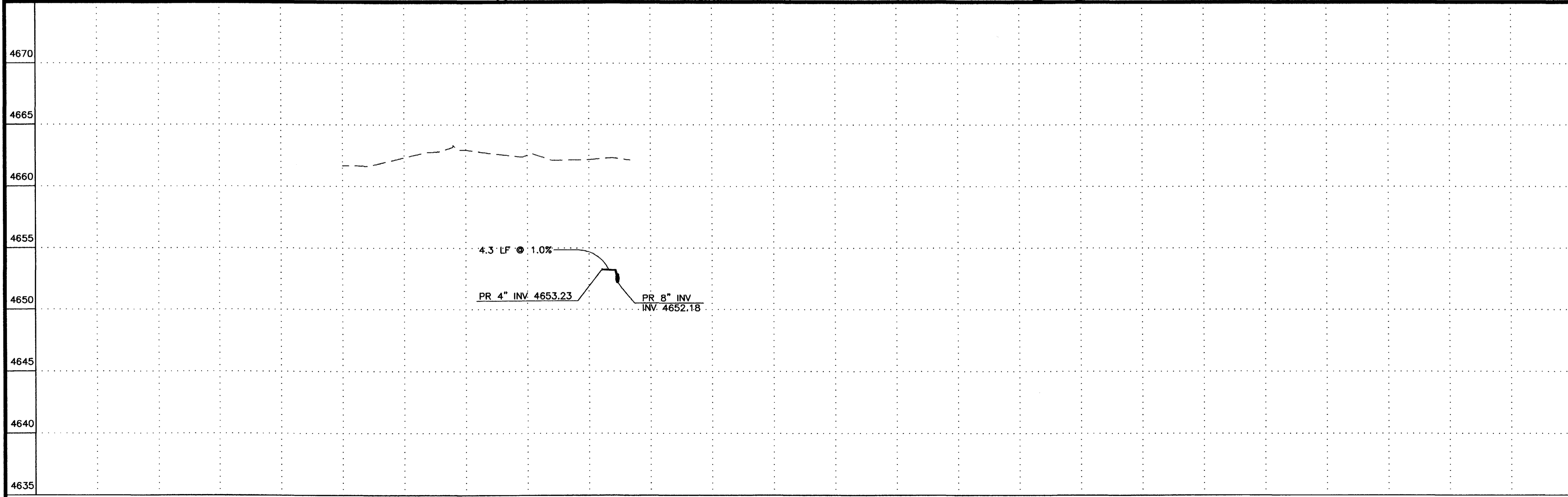


SHADING AND TEXTURE LEGEND			
FACILITY OR SURFACE TREATMENT	EXISTING	PROPOSED	REMOVE & REPLACE
ASPHALT PAVEMENT	[Pattern]	[Pattern]	[Pattern]
CONCRETE (C, G, SW, SLABS)	[Pattern]	[Pattern]	[Pattern]
AGGREGATE GRAVEL	[Pattern]	[Pattern]	[Pattern]
LANDSCAPE ROCK ON PLASTIC	[Pattern]	[Pattern]	[Pattern]
GRASS SOD	[Pattern]	[Pattern]	[Pattern]
BUILDING	[Pattern]	[Pattern]	[Pattern]

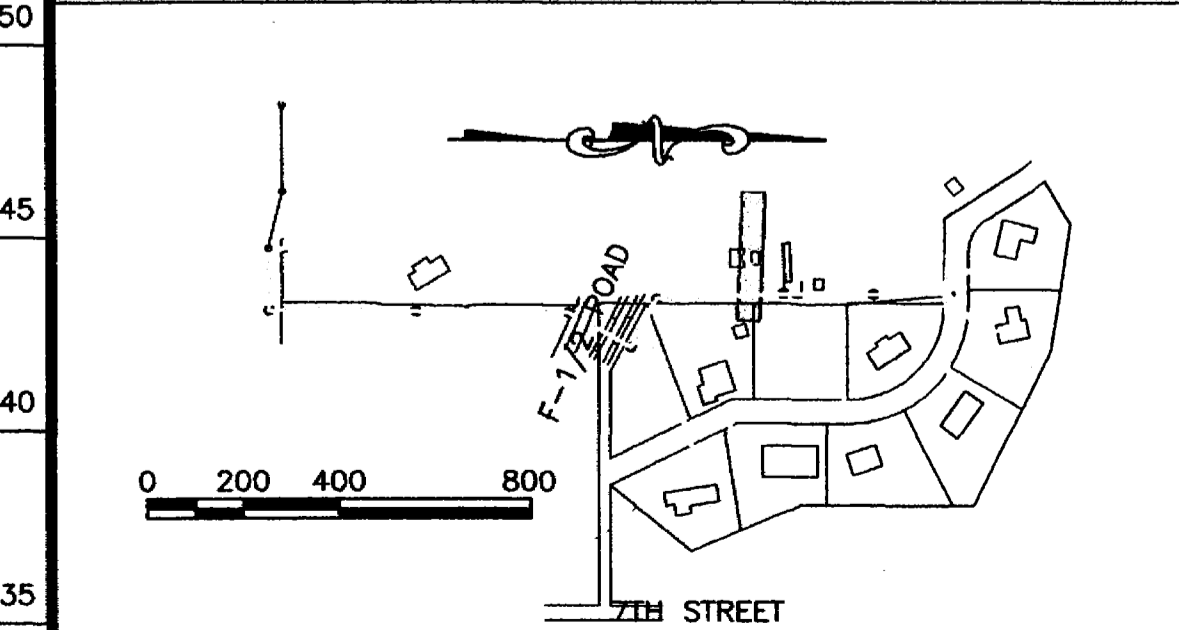
COORDINATES (IN METERS)						
PT	DESC	STATION	OFFSET	NORTHING	EASTING	ELEV.
CP-8				5873.00	11236.21	4662.63
PROP COR				5886.15	11242.74	4663.08

**CONSTRUCTION NOTES**

24.1 Construct sanitary sewer tap, service, and plug, 4" unless noted otherwise. Tap location shown is approximate only - Contractor shall coordinate with homeowner to determine desired tap location.



**KEY MAP**



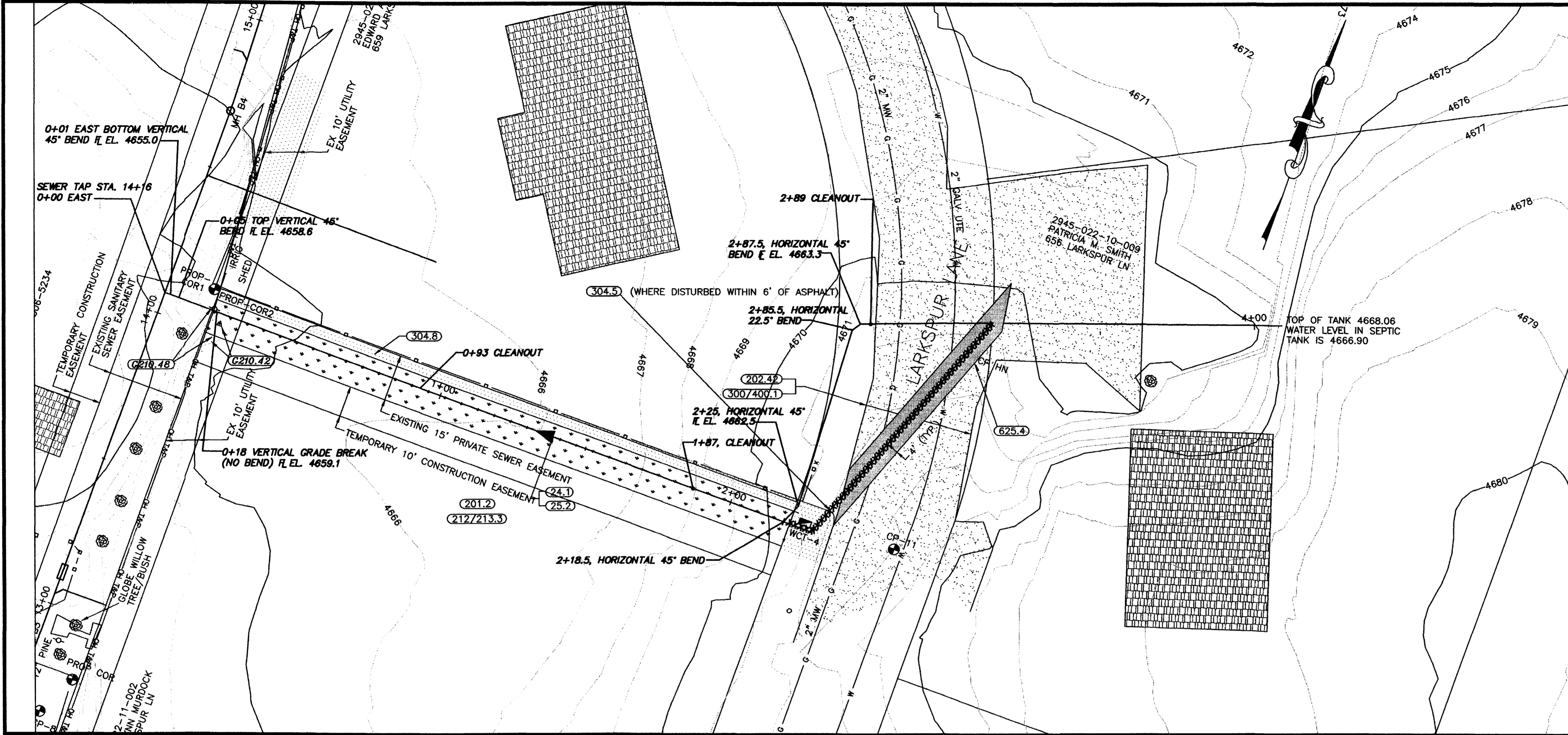
REVISION	DESCRIPTION	DATE
REVISION		
REVISION		

SCALE	PLAN	PROFILE	SECTIONS
HORIZONTAL	0 10 20 40	0 10 20 40	
VERTICAL		0 2.5 5 10	

**WILLIAMS ENGINEERING**  
 1231 19 ROAD, FRUITA, COLORADO 81521-9689  
 (970) 858-1014 PHONE (970) 858-1007 FAX

**NORTHFIELD ESTATES TRUNKLINE  
 EXTENSION & SEWERLINE IMPROVEMENTS**  
 Sta. 0+00 to 1+22.03

SHEET 10  
 FILENAME  
 RCP01004.DWG



**SHADING AND TEXTURE LEGEND**

FACILITY OR SURFACE TREATMENT	EXISTING	PROPOSED	REMOVE & REPLACE
ASPHALT PAVEMENT	[Pattern]	[Pattern]	[Pattern]
CONCRETE (C, G, SW, SLABS)	[Pattern]	[Pattern]	[Pattern]
AGGREGATE GRAVEL	[Pattern]	[Pattern]	[Pattern]
LANDSCAPE ROCK ON PLASTIC	[Pattern]	[Pattern]	[Pattern]
GRASS SOD	[Pattern]	[Pattern]	[Pattern]
BUILDING	[Pattern]	[Pattern]	[Pattern]

**COORDINATES (IN METERS)**

PT	DESC	STATION	OFFSET	NORTHING	EASTING	ELEV.
CP-8				5873.00	11236.21	4662.63
PROP-COR				5886.15	11242.74	4663.08
PROP-COR1				6020.49	11243.32	4663.74
PROP-COR2				6020.56	11243.46	4663.64
CP HN				6084.47	11480.76	4671.41
CP-11				6017.37	11478.10	4673.01

**CONSTRUCTION NOTES**

24.1 Construct sanitary sewer tap, service, and plug, 4" unless noted otherwise. Tap location shown is approximate only - Contractor shall coordinate with homeowner to determine desired tap location.

G25.2 Install sanitary sewer cleanout per the UPC for each 100 feet, or fraction thereof, of sewer service, and at each horizontal bend. A steel fence post shall be buried beside each cleanout.

201.2 Clear, grub, remove, and dispose of all trees, vegetation, and/or debris as required for construction.

202.42 Remove asphalt pavement as required for construction.

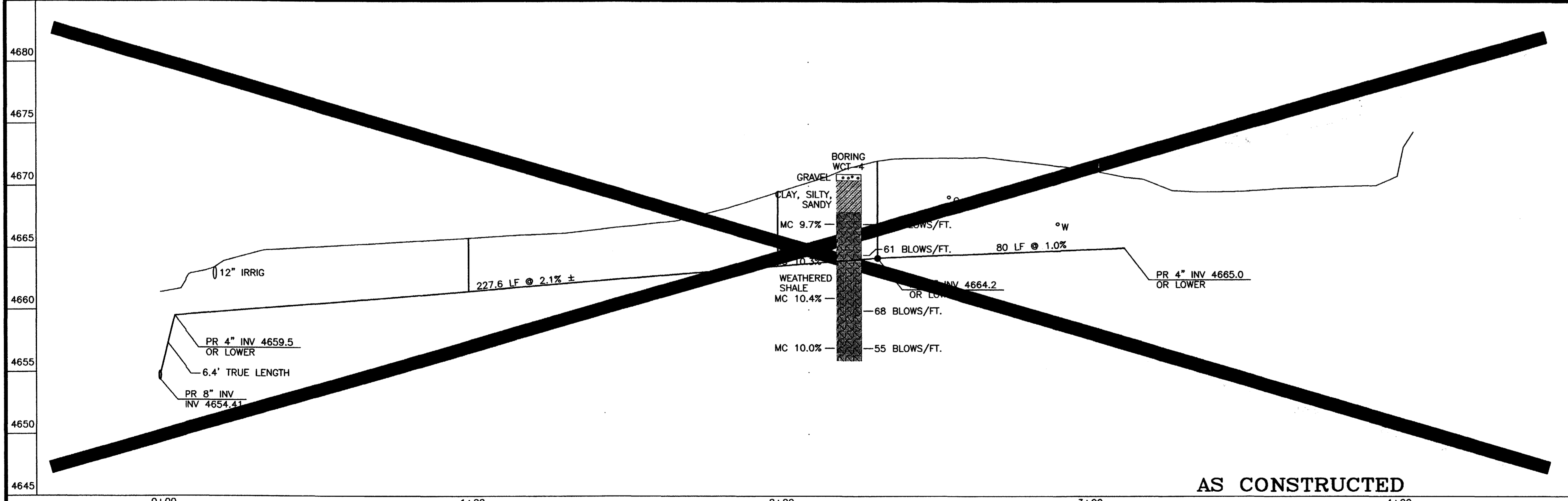
G210.42 Coordinate relocation of telephone pull box and buried cable as required.

G210.48 Coordinate relocation of utility pole and cable as required.

212/213.3 Restore landscaping, including sod where removed, irrigation systems, and other features.

300/400.1 Construct pavement structure per Special Provisions.

304.8 Provide decorative rock replacement surface course over plastic. Match adjacent existing material.



4680

4675

4670

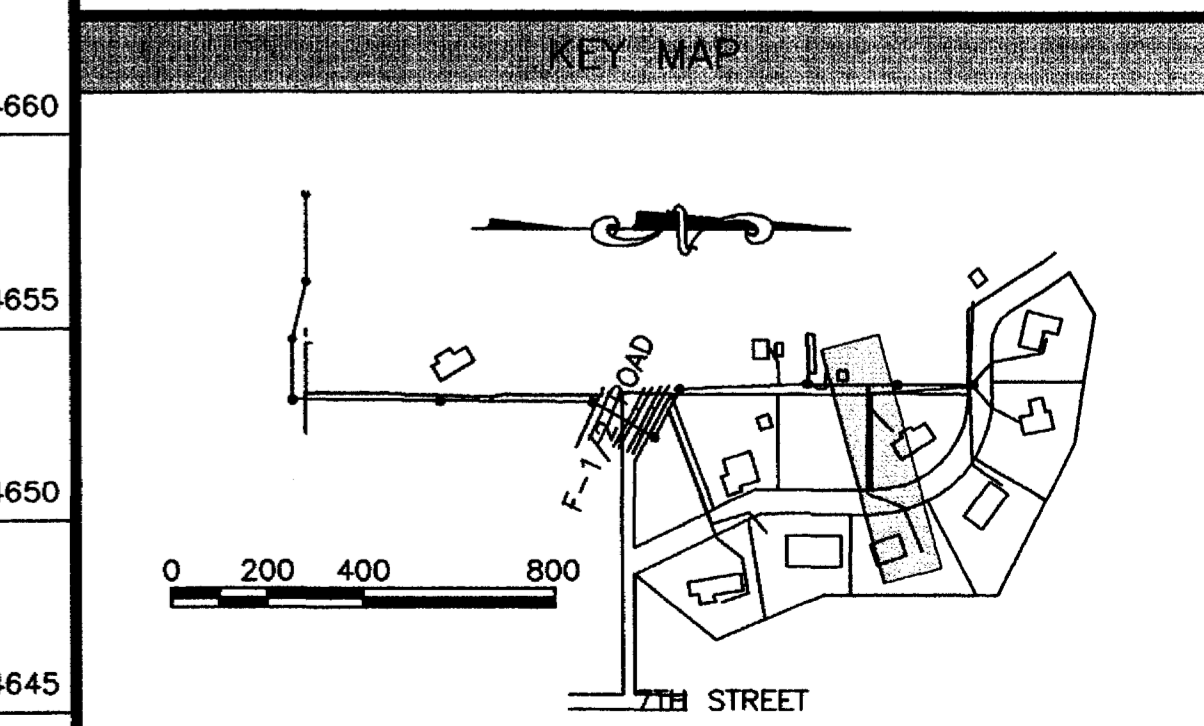
4665

4660

4655

4650

4645



REVISION	DESCRIPTION	DATE

SECTION	HORIZONTAL	VERTICAL
	0 10 20 40	0 10 20 40
	0 2.5 5 10	

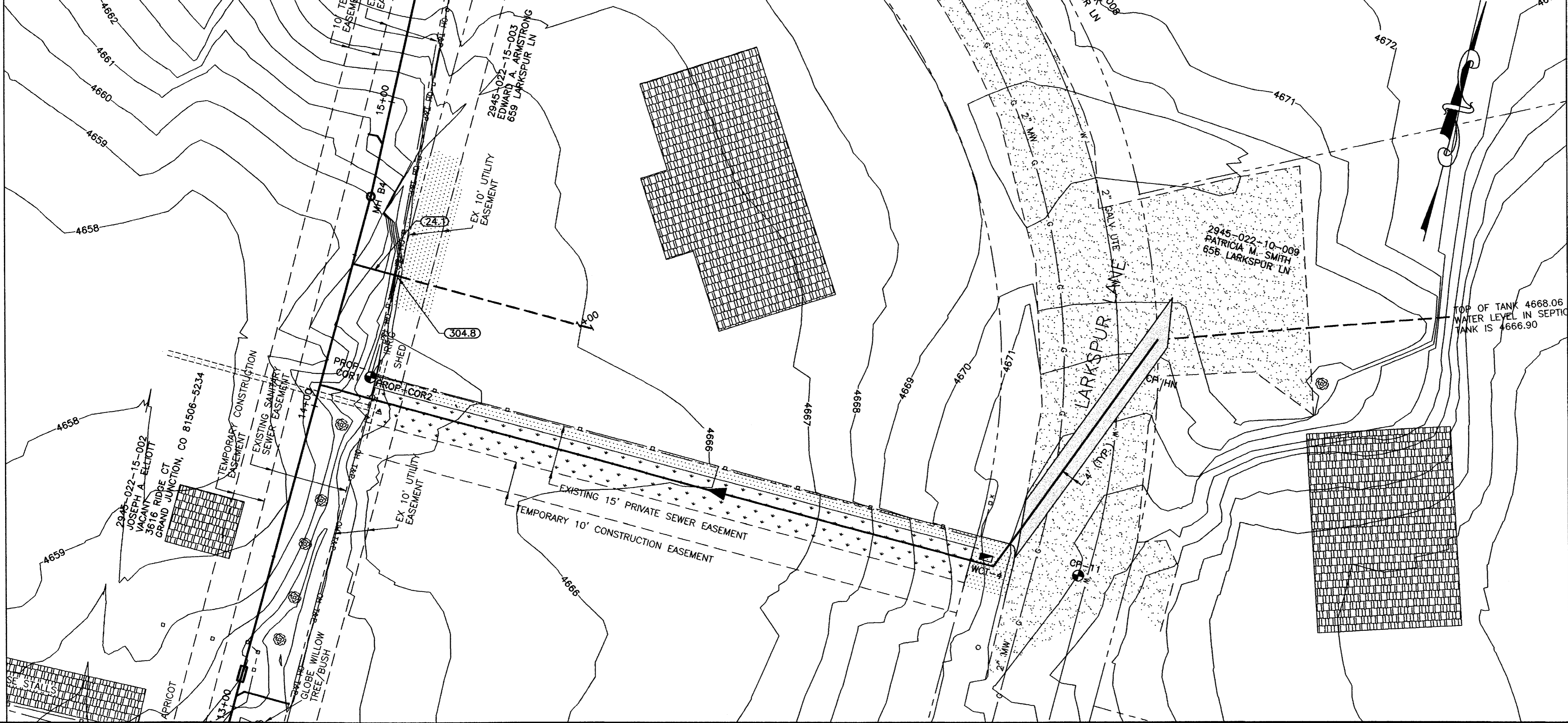
**AS CONSTRUCTED**

**WILLIAMS ENGINEERING**  
 1231 19 ROAD, FRUITA, COLORADO 81521-9689  
 (970) 858-1014 PHONE (970) 858-1007 FAX

**NORTHFIELD ESTATES TRUNKLINE  
 EXTENSION & SEWERLINE IMPROVEMENTS**  
 Sta. 0+00 to 3+95.33

SHEET 11  
 FILENAME  
 RCP01005.DWG





**SHADING AND TEXTURE LEGEND**

FACILITY OR SURFACE TREATMENT	EXISTING	PROPOSED	REMOVE & REPLACE
ASPHALT PAVEMENT	[Pattern]	[Pattern]	[Pattern]
CONCRETE (C. G. SW. SLABS)	[Pattern]	[Pattern]	[Pattern]
AGGREGATE GRAVEL	[Pattern]	[Pattern]	[Pattern]
LANDSCAPE ROCK ON PLASTIC	[Pattern]	[Pattern]	[Pattern]
GRASS SOD	[Pattern]	[Pattern]	[Pattern]
BUILDING	[Pattern]	[Pattern]	[Pattern]

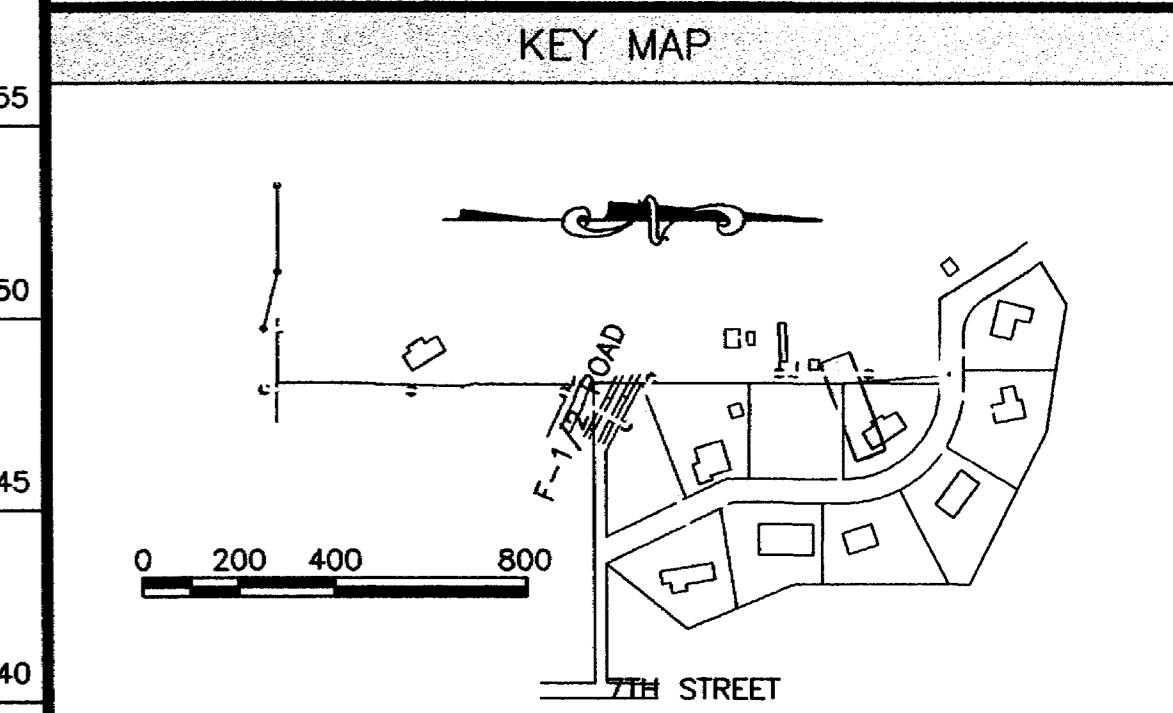
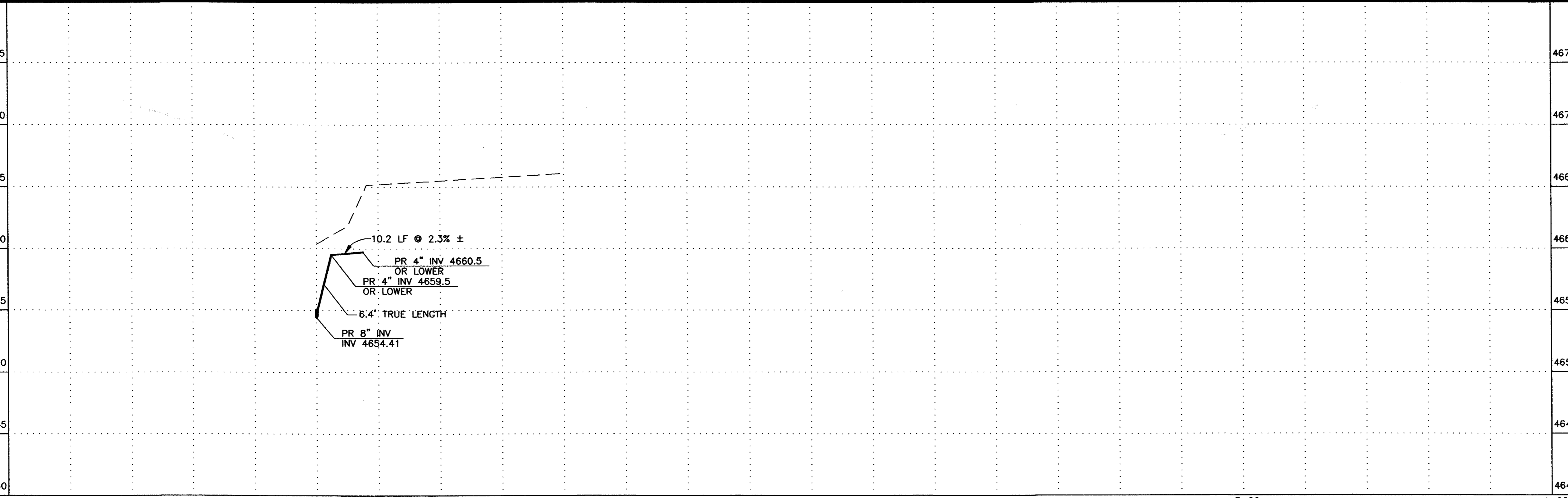
**COORDINATES (IN METERS)**

PT	DESC	STATION	OFFSET	NORTHING	EASTING	ELEV.
PROP-COR1				6020.49	11243.32	4663.74
PROP-COR2				6020.56	11243.46	4663.64
CP HN				6084.47	11480.76	4671.41
CP-11				6017.37	11478.10	4673.01

**CONSTRUCTION NOTES**

24.1 Construct sanitary sewer tap, service, and plug, 4" unless noted otherwise. Tap location shown is approximate only - Contractor shall coordinate with homeowner to determine desired tap location.

304.8 Provide decorative rock replacement surface course over plastic. Match adjacent existing material.

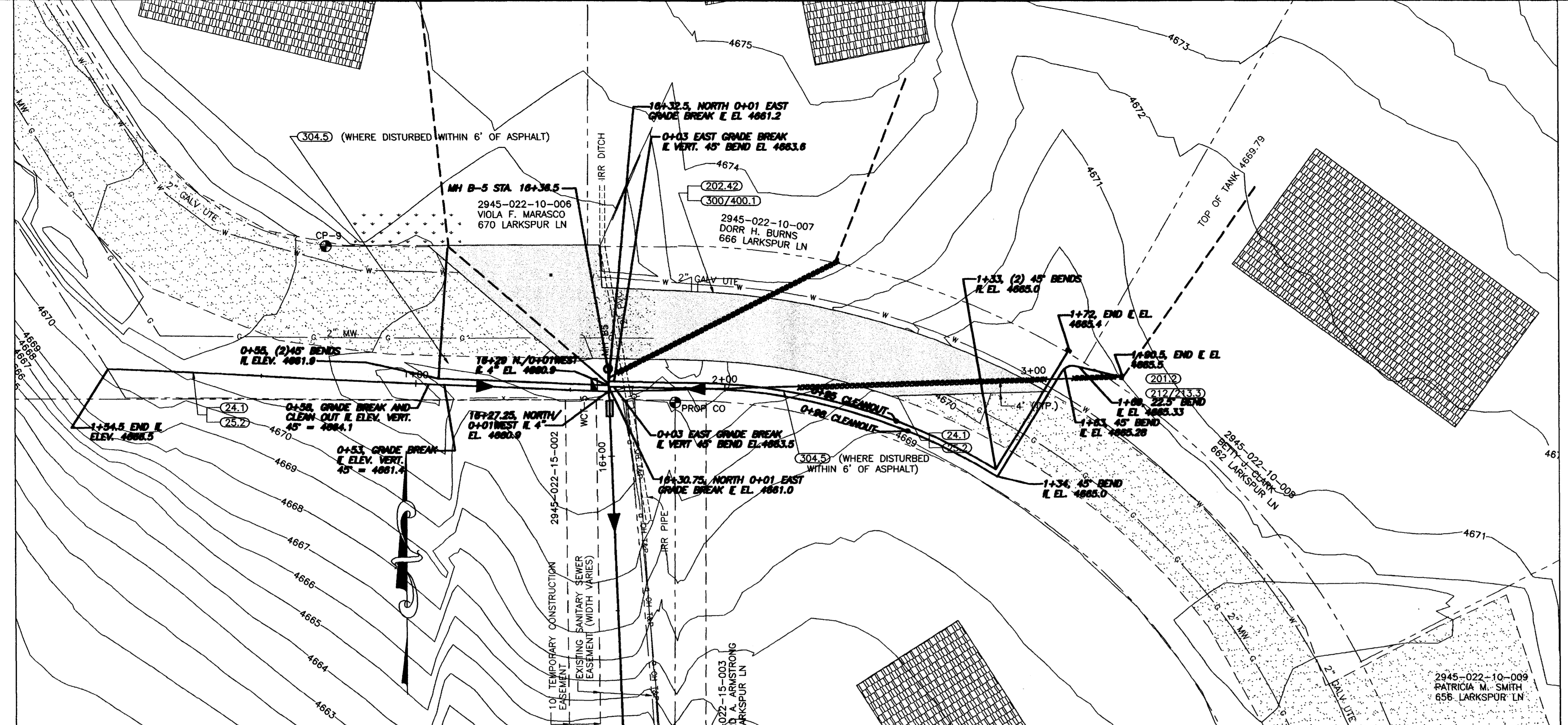


DESCRIPTION	DATE	SCALE	PLAN	PROFILE	SECTIONS
REVISION $\Delta$		HORIZONTAL	0 10 20 40	0 10 20 40	
REVISION $\Delta$		VERTICAL		0 2.5 5 10	

**WILLIAMS ENGINEERING**  
 1231 19 ROAD, FRUITA, COLORADO 81521-9689  
 (970) 858-1014 PHONE (970) 858-1007 FAX

**NORTHFIELD ESTATES TRUNKLINE  
 EXTENSION & SEWERLINE IMPROVEMENTS**  
 Sta. 0+00 to 0+99.06

SHEET 12  
 FILENAME  
 RCP01006.DWG



SHADING AND TEXTURE LEGEND			
FACILITY OR SURFACE TREATMENT	EXISTING	PROPOSED	REMOVE & REPLACE
ASPHALT PAVEMENT	[Pattern]	[Pattern]	[Pattern]
CONCRETE (C, G, SW, SLABS)	[Pattern]	[Pattern]	[Pattern]
AGGREGATE GRAVEL	[Pattern]	[Pattern]	[Pattern]
LANDSCAPE ROCK ON PLASTIC	[Pattern]	[Pattern]	[Pattern]
GRASS SOD	[Pattern]	[Pattern]	[Pattern]
BUILDING	[Pattern]	[Pattern]	[Pattern]

COORDINATES (IN METERS)						
PT	DESC	STATION	OFFSET	NORTHING	EASTING	ELEV.
	PROP CO			6224.37	11244.51	4671.12
	CP-9			6275.12	11131.74	4671.32

**CONSTRUCTION NOTES**

24.1 Construct sanitary sewer tap, service, and plug, 4" unless noted otherwise. Tap location shown is approximate only - Contractor shall coordinate with homeowner to determine desired tap location.

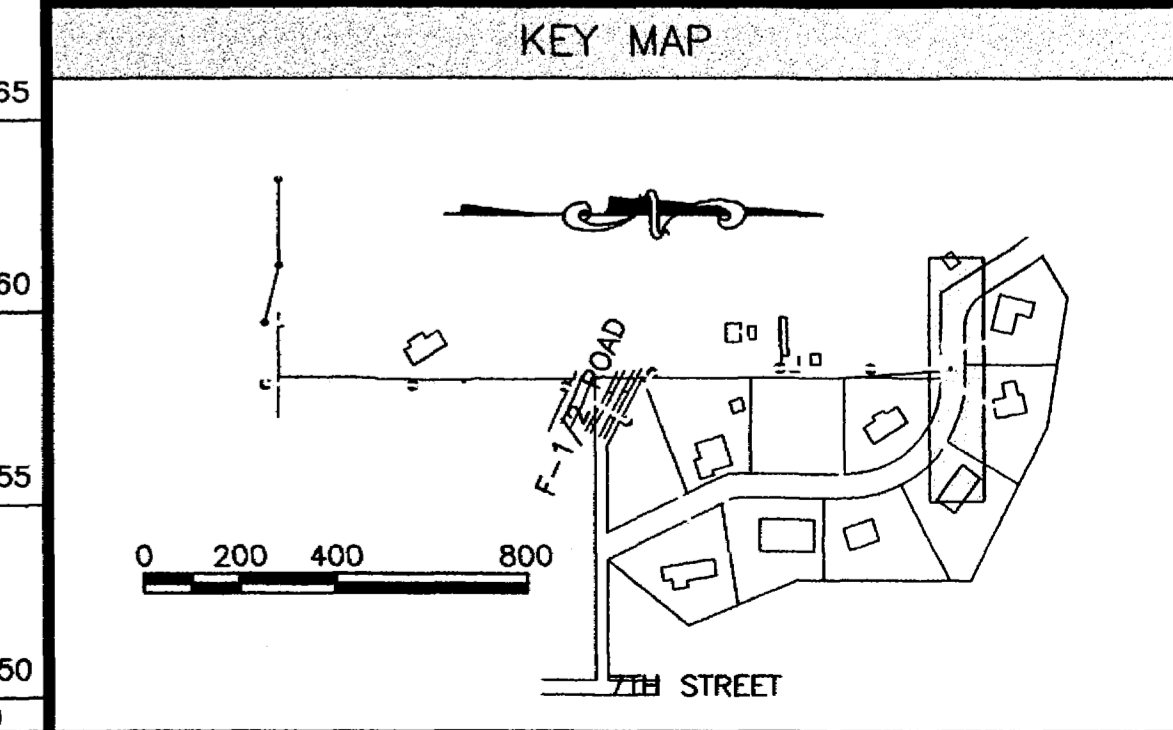
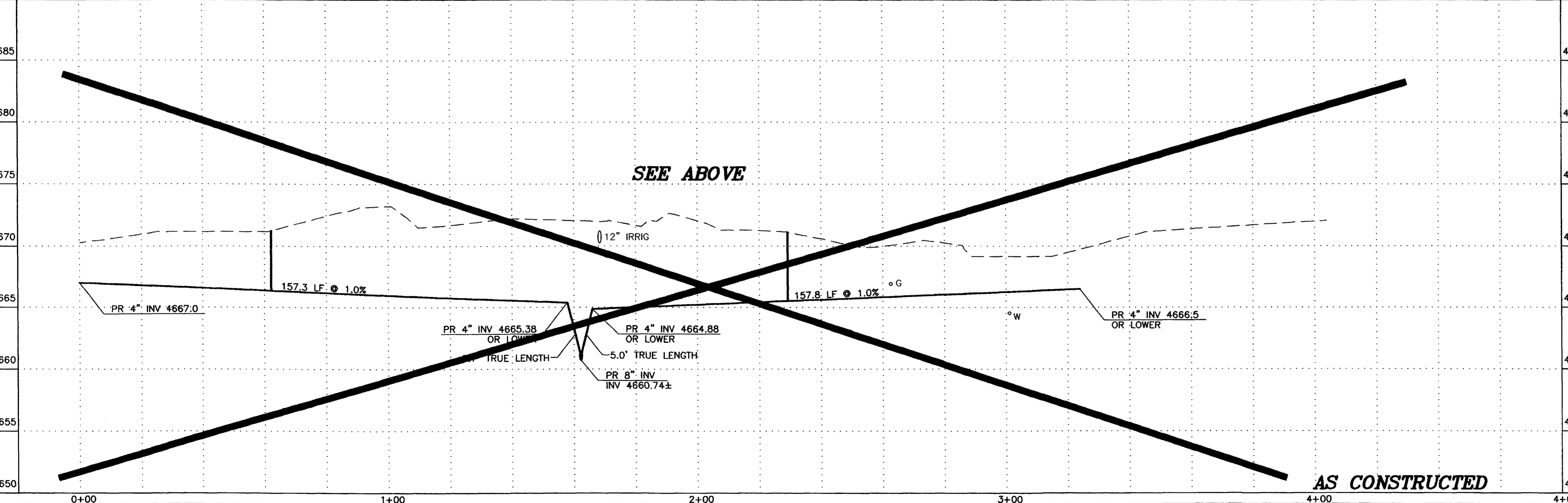
G25.2 Install sanitary sewer cleanout per the UPC for each 100 feet, or fraction thereof, of sewer service, and at each horizontal bend. A steel fence post shall be buried beside each cleanout.

201.2 Clear, grub, remove, and dispose of all trees, vegetation, and/or debris as required for construction.

202.42 Remove asphalt pavement as required for construction.

300/400.1 Construct pavement structure per Special Provisions.

304.5 Construct 6" thick ABC shoulder.

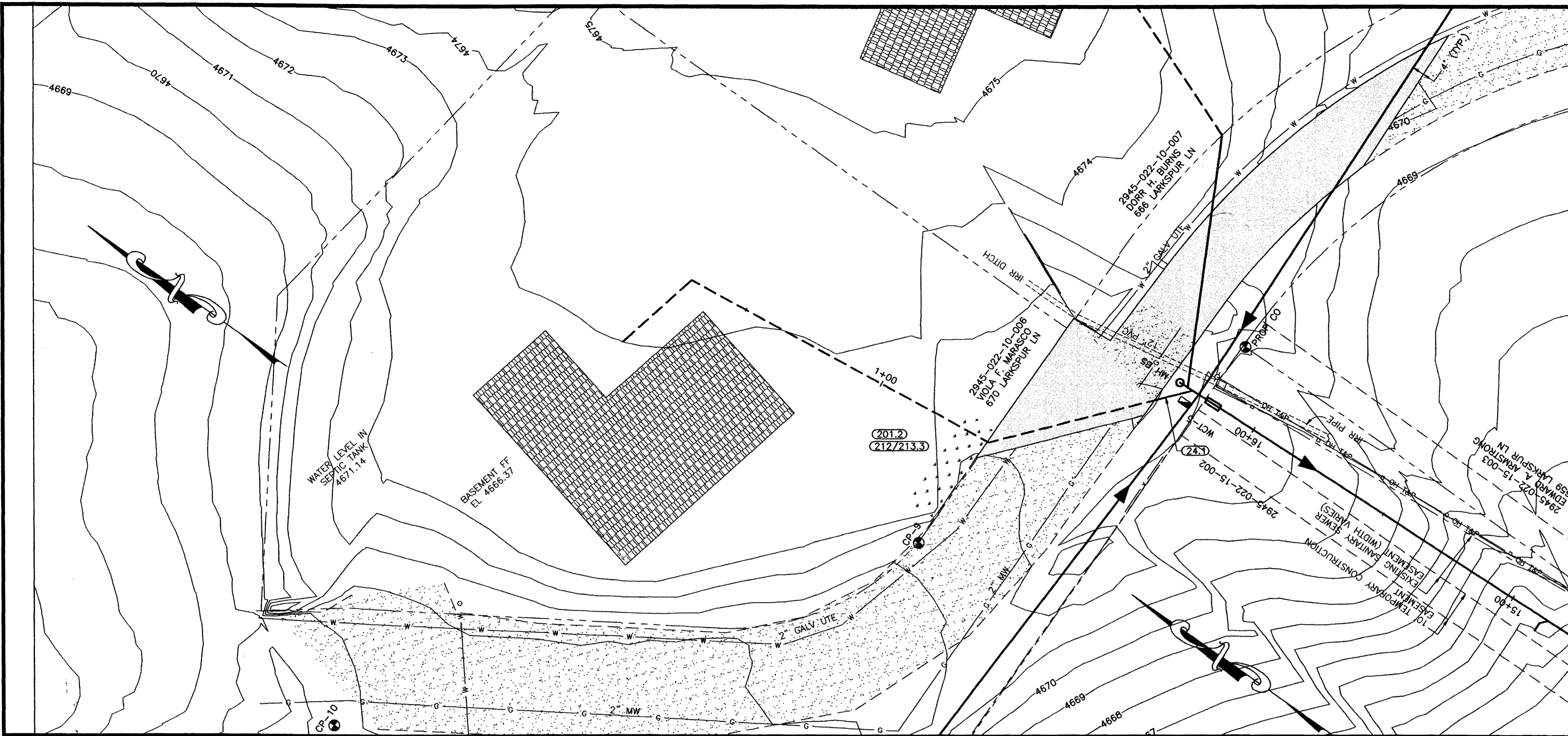


REVISION	DESCRIPTION	DATE	SCALE	PLAN	PROFILE	SECTIONS
REVISION A			HORIZONTAL	0 10 20 40	0 10 20 40	
REVISION B			VERTICAL		0 2.5 5 10	

**WILLIAMS ENGINEERING**  
 1231 19 ROAD, FRUITA, COLORADO 81521-9689  
 (970) 858-1014 PHONE (970) 858-1007 FAX

**NORTHFIELD ESTATES TRUNKLINE  
 EXTENSION & SEWERLINE IMPROVEMENTS**  
 Sta. 0+00 to 1+65.66

SHEET 13  
 FILENAME  
 RCP01007.DWG



SHADING AND TEXTURE LEGEND			
FACILITY OR SURFACE TREATMENT	EXISTING	PROPOSED	REMOVE & REPLACE
ASPHALT PAVEMENT	[Pattern]	[Pattern]	[Pattern]
CONCRETE (C, G, SW, SLABS)	[Pattern]	[Pattern]	[Pattern]
AGGREGATE GRAVEL	[Pattern]	[Pattern]	[Pattern]
LANDSCAPE ROCK ON PLASTIC	[Pattern]	[Pattern]	[Pattern]
GRASS SOD	[Pattern]	[Pattern]	[Pattern]
BUILDING	[Pattern]	[Pattern]	[Pattern]

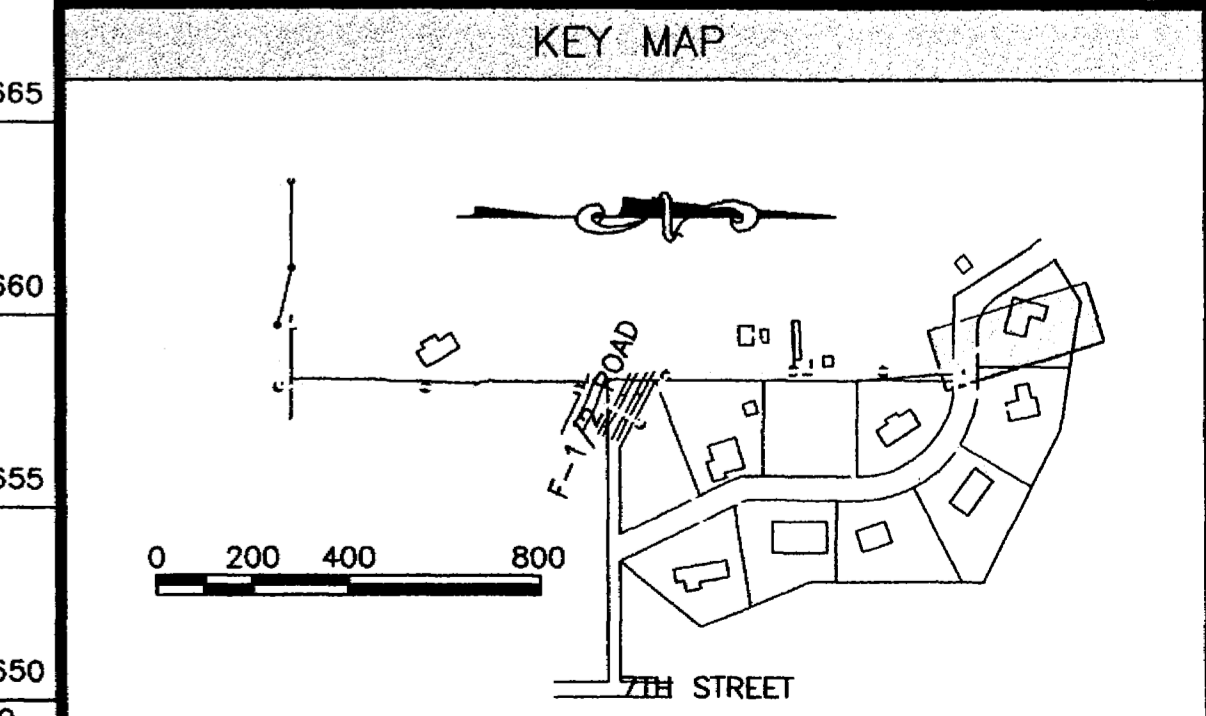
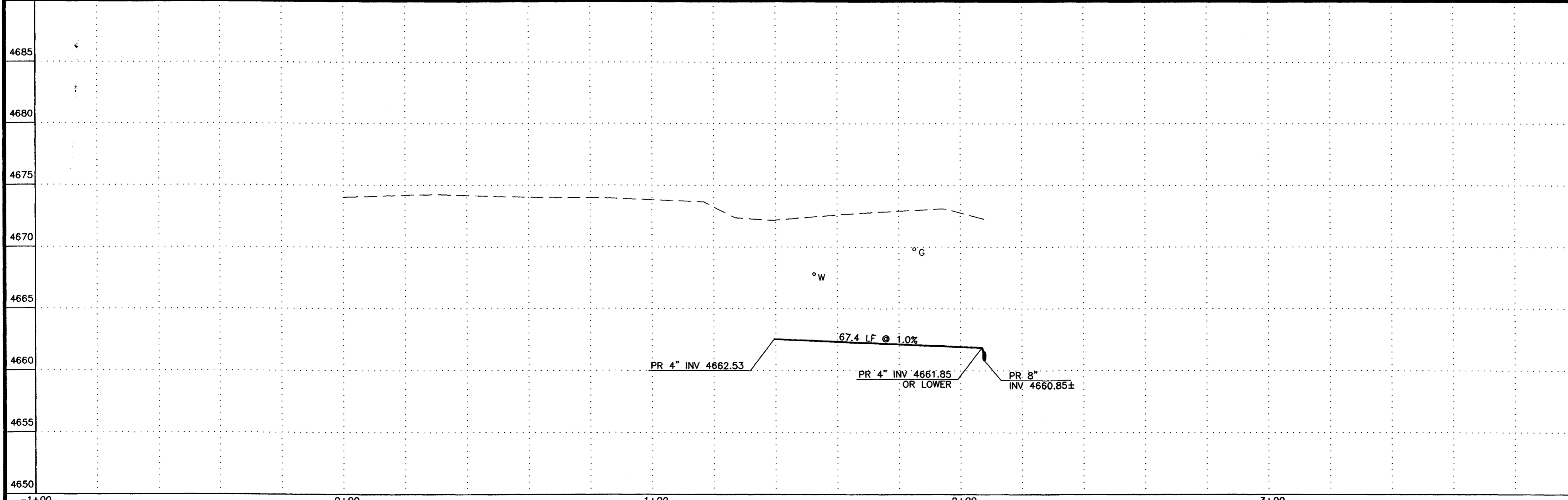
  

COORDINATES (IN METERS)						
PT	DESC	STATION	OFFSET	NORTHING	EASTING	ELEV.
	PROP CO			6224.37	11244.51	4671.12
	CP-9			6275.12	11131.74	4671.32

**CONSTRUCTION NOTES**

24.1 Construct sanitary sewer tap, service, and plug, 4" unless noted otherwise. Tap location shown is approximate only - Contractor shall coordinate with homeowner to determine desired tap location.

201.2 Clear, grub, remove, and dispose of all trees, vegetation, and/or debris as required for construction.



REVISION	DESCRIPTION	DATE

SCALE	PLAN	PROFILE	SECTIONS
HORIZONTAL	0 10 20 40	0 10 20 40	
VERTICAL		0 2.5 5 10	

**WILLIAMS ENGINEERING**  
 1231 19 ROAD, FRUITA, COLORADO 81521-9689  
 (970) 858-1014 PHONE (970) 858-1007 FAX

**NORTHFIELD ESTATES TRUNKLINE  
 EXTENSION & SEWERLINE IMPROVEMENTS**  
 Sta. 0+00 to 3+11.06

SHEET 14  
 FILENAME  
 RCP01009